



TE100-SK1 **5-Port 100Base-TX Hub Starter Kit**

The TE100-SK1 is designed as a total solution for connecting two personal computers to enable them to share files, printers, fax servers, and/or email. TRENDnet's TE100-SK1 features a 5-Port 100Base-TX hub and two 10/100Mbps Fast Ethernet cards. TRENDnet's network starter kits are specially designed for home and small office use and can support up to 5 network nodes without expansion. There is enough room on the hub to add a server, network printer, and a third personal computer.



FEATURES

5-port 100Base-T Hub (TE100-H5E)

- 5-port 100Base-TX
- Uplink port for cascading to another 100Base-TX Class II hub
- Port Jabber and auto-partition protection, data collision detection and handling
- Sturdy all metal housing
- Preamble regeneration retiming incoming frames
- Status LED indicator for hub diagnostics and network utilization
- 5 Year Warranty

10/100Mbps Fast Ethernet Adapter for PCI (TE100-PCIW)

- 10/100 Mbps auto-sensing
- Supporting 32-bit PCI bus mastering
- Plug and Play
- Supports multi-tread penetration
- Compatible with all major Network Operating Systems
- 5 Year Warranty

BENEFITS

- **Upgradable:**
Add nodes as needed.
- **Expandable:**
Add a server, internet station, network printer or a third PC without changing the hub.
- **Flexible:**
Hub is smaller enough to be put anywhere it is needed.
- **Cost Effective:**
Buy only the part you need.
- **Reliable:**
5 year or lifetime warranty.



TE100-SK1

5-Port 100Base-TX Hub Starter Kit

SPECIFICATIONS

TE100-H5E

DC Input:

- 12V, 800mA

Standards:

- IEEE 802.3u 100Base-TX standard

Power Consumption:

- 10W max

Cabling:

- EIA Category 5 STP/UTP

Uplink Port:

- Shared port #1 (Slide Switch)

Weight:

- 600 grams (excluding power adapter)

Dimensions:

- 160 mm x 120 mm x 30 mm (LxWxH)

Operating Temperature:

- 0° - 50° C

Certification:

FCC, UL, C-tick, CE

TE100-PCIW

Standards:

- IEEE 802.3 10Base-T, IEEE 802.3u 100Base-TX

Data Transfer Rate:

- 10 or 100Mbps /20 or 200Mbps (Full Duplex)

Topology:

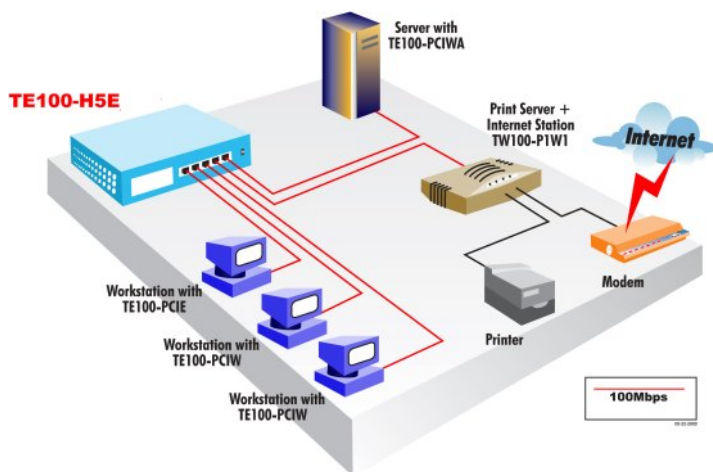
- Star

Diagnostic LED's:

- ACT, LINK, 100, FDX



NETWORKING SOLUTIONS



To Order Please Call:
1-888-326-6061

PRODUCT INFORMATION

- **TE-SK1:** 5-Port 10Base-T Hub Ethernet Starter Kit
(2 x TE-PCIWT, 1 x TE-500, 2 x 15' CAT 5 cables)
- **TE100-SK1:** 5-Port 100Base-T Hub Fast Ethernet Starter Kit
(2 x TE100-PCIW, 1 x TE100-H5E, 2 x 15' CAT 5 cables)
- **TE100-SK2:** 4-Port 10/100Mbps Dual Speed Starter Kit
(1 x TE100-PCIWplus, 1 x TE100-DX4PCI, 1 x 15' CAT 5 cables)
- **TE100-SK3:** 5-Port 10/100Mbps Switch Fast Ethernet Network Kit
(2 x TE100-PCIWN, 1x TE100-S55E, 2 x 20' CAT 5 cables)
- **TE100-SK3plus:** 5-Port 10/100Mbps Switch Fast Ethernet Network Kit
(2 x TE100-PCIWN, 1x TE100-S55Eplus, 2 x 20' CAT 5 cables)
- **TE100-SK4:** 10/100Mbps Switched Fast Ethernet Network Kit
(2 x TE100-PCIWN, 1 x TE100-S5P, 2 x 15' CAT 5 cable)

ORDERING INFORMATION

TRENDware International, Inc.

3135 Kashiwa Street
Torrance, CA. 90505. USA

Tel: 310-891-1100

Fax: 310-891-1111

Web: www.TRENDNET.com

Email: sales@trendware.com

