

## **TE100-S32plus** **32-port 10/100Mbps NWay Switch (Rack Mount)**

TRENDnet's TE100-S32plus is a high performance, auto-sensing 32-port NWay rack-mountable Fast Ethernet Switch. It is designed to eliminate unnecessary traffic and relieve congestion on critical network paths. With 10/100Mbps NWay technology, the TE100-S32plus automatically negotiates between 10Base-T and 100Base-TX network speeds, as well as half and full duplex modes. The TE100-S32plus also has a module bay for optional multimode SC type fiber module that allows connection to another fiber device up to 2Km away (in full-duplex mode). The auto MDI-II/MDI-X detection on each port automatically detects and corrects for crossover connection and allows direct switch-to-switch or switch-to-hub connection for your networking needs.



### FEATURES

- 32 10/100Mbps NWay Auto-MDI Ethernet Ports
- 1 module bay for optional 100Base-FX SC type connector Fiber Module
- Full/Half duplex transfer mode for each port
- Store and Forward switching method
- Integrated address Look-Up Engine, supports 4k absolute MAC Address
- Supports 1M Bytes RAM for data buffering
- Extensive Front Panel Diagnostic LEDs
- Broadcast Storm protection
- IEEE 802.3x flow control for full-duplex
- Back Pressure flow control for half-duplex
- Standard 19" rack-mount design
- 5 Year Warranty

### BENEFITS

- **Performance:**  
Top performance at an affordable price.
- **Expandability:**  
Current Ethernet workgroups are able to upgrade to Fast Ethernet by changing adapters and hubs without changing switches.
- **Flexibility:**  
All ports automatically negotiate 10/100Mbps network speed, half/full-duplex mode, and MDI-II/MDI-X connector type.
- **Expandability:**  
Optional 100Base-FX multimode SC type module links to other fiber device up to 2Km in full-duplex mode.
- **Cost Effectiveness:**  
Provide 10/100Mbps of Fast Ethernet at an affordable rate.

# TE100-S32plus

## 32-port 10/100Mbps NWay Switch (Rack Mount)

### SPECIFICATIONS

#### LAN Standards:

- IEEE 802.3 10Base-T and IEEE 802.3u 100Base-TX ANS/IEEE 802.3 NWay auto-negotiation

#### Network Cables:

- Ethernet: CAT 3, 4, 5 UTP/STP
- Fast Ethernet: CAT 5 UTP/STP for 100Base-TX
- Fiber Module: 62.5/125mm multimode fiber-optic with SC type connector (412 m in half-duplex mode, 2 Km in full-duplex mode)

#### Protocol:

- CSMA/CD

#### Topology:

- Star

#### Data Transfer Rates:

- Ethernet: 10Mbps Half Duplex, 20Mbps Full Duplex
- Fast Ethernet: 100Mbps Half Duplex, 200Mbps Full Duplex

#### Data RAM Buffers:

- 1 M Byte per device

#### Filtering Address Table:

- 4K entries per device

#### Diagnostic LEDs:

- Power, 10/100Mbps Link/Activity, Collision/Full Duplex, FX

#### Power:

- 100~240VAC 50/60Hz, internal Universal Switching Power

#### Power Consumption:

- 40 Watts. Max

#### Dimensions:

- 440 x 200 x 44 mm (17.3 x 7.9x 1.73 inch) (W x H x D)

#### Weight:

- 3Kg (6.6 lb)

#### Temperature:

- Operating: 0° ~ 50° C (32° ~ 122°F).
- Storage: -10° ~ 70° C (14° ~ 158°F)

#### Humidity:

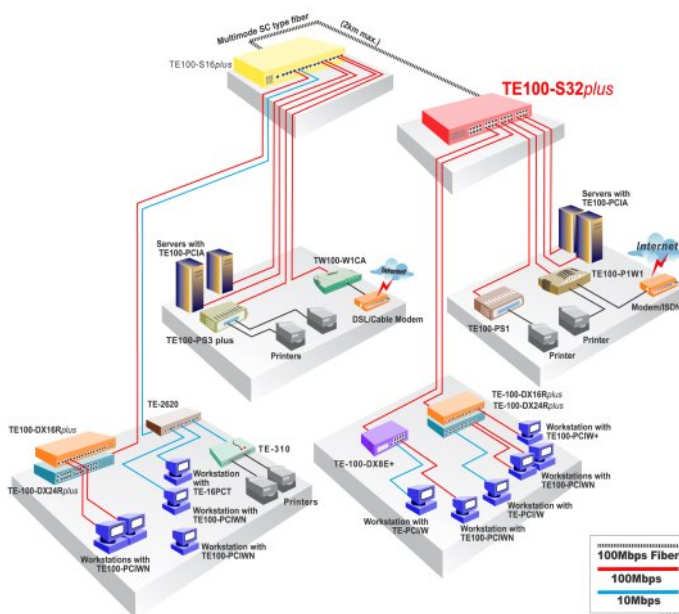
- 10% ~ 90% (no-condensing)

#### Emission:

- FCC Class A, CE Mark A, VCCI-A



### NETWORKING SOLUTIONS



**To Order Please Call:**  
**1-888-326-6061**

### PRODUCT INFORMATION

- **TE100-S16plus:** 16-Port 10/100Mbps NWay Fast Ethernet Switch
- **TE100-S24plus:** 24-Port 10/100Mbps NWay Fast Ethernet Switch
- **TE100-S32plus:** 32-Port 10/100Mbps NWay Fast Ethernet Switch
- **TE100-SFXM:** Multimode SC-Type Fiber Slide-in Module for TE100-S1616/S2424 and TE100-S16/S16plus/S24plus

### ORDERING INFORMATION

**TRENDware International, Inc.**  
3135 Kashiwa Street  
Torrance, CA. 90505. USA  
Tel: 310-891-1100  
Fax: 310-891-1111  
Web: [www.TRENDNET.com](http://www.TRENDNET.com)  
Email: [sales@trendware.com](mailto:sales@trendware.com)

