



TE100-S24plus **24-port 10/100Mbps NWay Switch (Rack Mount)**

TRENDnet's TE100-S24plus is a high performance, auto-sensing 24-port NWay rack-mountable Fast Ethernet Switch. It is designed to eliminate unnecessary traffic and relieve congestion on critical network paths. With 10/100Mbps NWay technology, the TE100-S24plus automatically negotiates between 10Base-T and 100Base-TX network speeds, as well as half and full duplex modes. The TE100-S24plus also has a module bay for optional multimode SC type fiber module that allows connection to another fiber device up to 2Km away (in full-duplex mode). The auto MDI-II/MDI-X detection on each port automatically detects and corrects for crossover connection and allows direct switch-to-switch or switch-to-hub connection for your networking needs.



FEATURES

- 24 10/100Mbps NWay Auto MDI-II/MDI-X ports
- Integrate address Look-Up Engine, supports up to 4K absolute MAC address
- 768KB internal RAM for frame buffering
- Full/half duplex transfer mode for each port
- Wire-speed filtering/forwarding rates
- IEEE 802.3x flow control for full-duplex mode
- Back pressure flow control for half-duplex mode
- Store-and-forward switching method
- Extensive front-panel diagnostic LEDs
- One module bay for optional one-port 100Base-FX multimode SC type fiber connection
- 5 Year Warranty

BENEFITS

- **Performance:**
Top performance at an affordable price.
- **Expandability:**
Current Ethernet workgroups are able to upgrade to Fast Ethernet by changing adapters and hubs without changing switches.
- **Flexibility:**
All ports automatically negotiate 10/100Mbps network speed, half/full-duplex mode, and MDI-II/MDI-X connector type.
- **Expandability:**
Optional 100Base-FX multimode SC type module links to other fiber device up to 2Km in full-duplex mode.
- **Cost Effectiveness:**
Provide 10/100Mbps of Fast Ethernet at an affordable rate.

TE100-S24plus

24-port 10/100Mbps NWay Switch (Rack Mount)

SPECIFICATIONS

Standards:

- IEEE 802.3 10Base-T and IEEE 802.3u 100Base-TX/100Base-FX ANSI/IEEE 802.3 NWay auto-negotiation

Connectors:

- 24 10/100Mbps shielded RJ45 Auto MDI-II/MDI-X ports

Network Cables:

- Ethernet: CAT 3, 4, 5 UTP/STP
- Fast Ethernet: CAT 5 UTP/STP for 100Base-TX
- Fiber Module: 62.5/125mm multimode fiber-optic with SC type connector (412 m in half-duplex mode, 2 Km in full-duplex mode)

Protocols:

- CSMA/CD

Data Transfer Rate:

- Ethernet: 10Mbps (Half-Duplex), 20Mbps (Full-Duplex)
- Fast Ethernet: 100Mbps (Half-Duplex), 200Mbps (Full-Duplex)

Data RAM Buffers:

- 768KB per device

Filtering Address Table:

- 4K entries per device

Internal Power Adapter:

- 100~240 VAC, Universal Power Supply

Diagnostic LEDs:

- Power, Link/Act, FDX/COL, 100Base-FX

Dimensions:

- 440 x 140 x 44 mm
(17.3 x 5.51 x 1.73 inch) (W x H x D)

Temperature:

- Operating: -10° ~ 50°C (14 ~ 122°F)
- Storage: -10° ~ 70°C (14° ~ 158°F)

Humidity:

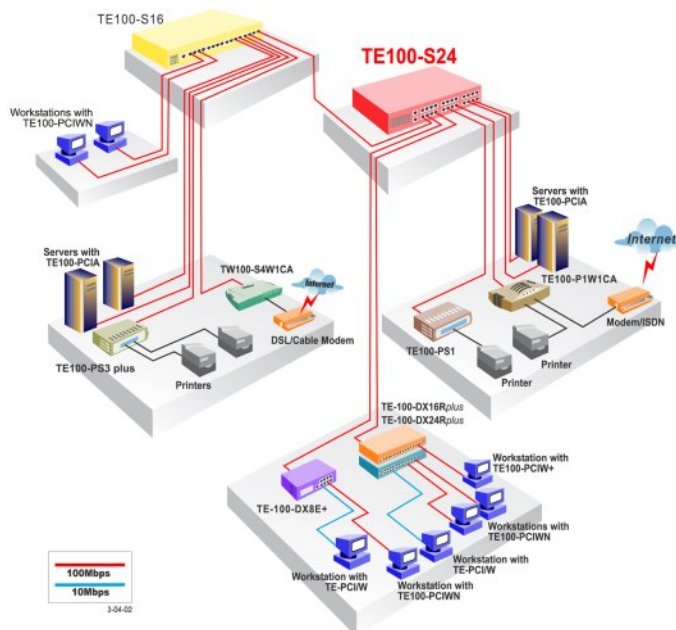
- Operating: 10% ~ 90% RH
- Storage: 5% ~ 90% RH

Emission:

- FCC Class A, CE Mark A, VCCI-A



NETWORKING SOLUTIONS



To Order Please Call:
1-888-326-6061

PRODUCT INFORMATION

- **TE100-S16plus:** 16-Port 10/100Mbps NWay Fast Ethernet Switch
- **TE100-S24plus:** 24-Port 10/100Mbps NWay Fast Ethernet Switch
- **TE100-S32plus:** 32-Port 10/100Mbps NWay Fast Ethernet Switch
- **TE100-SFXM:** Multimode SC-Type Fiber Slide-in Module for TE100-S1616/S2424 and TE100-S16/S16plus/S24plus

ORDERING INFORMATION

TRENDware International, Inc.
3135 Kashiwa Street
Torrance, CA. 90505. USA
Tel: 310-891-1100
Fax: 310-891-1111
Web: www.TRENDNET.com
Email: sales@trendware.com

