



TE100-S24WS 24-port 10/100Mbps Web-Based Smart Switch

TRENDnet's TE100-S24WS 24-port 10/100Mbps Web-Based Smart Switch is the ideal Switch for network segmenting. It has 24 10/100Mbps Auto-Sensing and Auto-MDIX ports for easy installation. The Switch also has a module slot that accepts optional single- or multi-mode 100Based-FX fiber module for connection up to 15Km. TE100-S24WS supports web browser configuration; Network Administrator can use web browser to configure port speed, port-based VLAN and QoS, and also monitor each port's status. TRENDnet's TEW100-S24WS is powerful and easy-to-use in reducing unnecessary broadcast traffic and enhance network security.



FEATURES

- 24 10/100Mbps Auto-negotiation, Auto-MDIX Fast Ethernet Ports
- 1 module slot for optional multi-mode (2Km) or single-mode (15Km) 100Base-FX SC fiber module
- Full/Half-Duplex transfer mode for each port
- Full wire-speed Non-Blocking reception and transmission
- Store and Forward switching method
- 768K bytes RAM data buffer and 4K entries MAC address table
- Extensive diagnostic LED's on the front panel
- IEEE 802.3x flow control for full-duplex mode; Back Pressure flow control for half-duplex mode
- Easy configuration via Web browser
- Proprietary Windows Based Management/Monitoring Utility (similar to SNMP Trap)
- Port-Based VLAN (25 groups) and Port-Based IEEE 802.1p QoS (High/Normal)
- Port Setting function, users can set each port's availability, speed, duplex mode, and flow control
- Standard 19" Rack-mount design
- 5-Year Warranty

BENEFITS

- **Easy Installation:**
Each RJ-45 port auto-senses connection speed, duplex type and MDI-X media type. Connect to 10 or 100Mbps network devices with straight through or crossover cable.
- **Expandability:**
Expand the connection up to 15Km with optional single-mode SC-Type fiber module.
- **Flexibility:**
Easy configuration and management through Web Browser.
- **Performance:**
Non-blocking high performance with internal Switch Controller.
- **Cost-Effectiveness:**
Provides Fast Ethernet Switch with management functions at an affordable price.

TE100-S24WS

24-port 10/100Mbps Web-Based Smart Switch

SPECIFICATIONS

LAN Standards:

- IEEE 802.3 10Base-T; IEEE 802.3u 100Base-TX, 100Base-FX

Network Media:

- Ethernet: UTP/STP Cat. 3, 4, 5, 100 meters max.
- Fast Ethernet: UTP/STP Cat. 5, 100 meters max.

Optional Fiber Module:

- 50/125 or 62.5/125um multi-mode fiber, 2Km max.
- 9/125 or 10/125um single-mode fiber, 15Km max.

Protocol:

- CSMA/CD

Topology:

- Star

Address Table:

- 4K entries per device

LAN Port:

- 24 x 10/100Mbps Auto Negotiation, Auto-MDIX ports,
- 1 x module slot for optional 100Base-FX fiber module with SC connector

Data Transfer Rate:

- Ethernet: 10/20Mbps (Half/Full-Duplex)
- Fast Ethernet: 100/200Mbps (Half/Full-Duplex)

Backplane:

- 2.7Gbps

Total Throughput:

- 5.0Gbps (with the optional fiber module)

Diagnostic LEDs:

- Per Unit: Power, System,
- Per Port (RJ-45): Link/Activity, 100Mbps.
- FX (optional fiber module): Link/Activity, FDX

Power Consumption:

- 14 Watts. Max

Dimensions (WxHxD):

- 440 x 140 x 44 mm (17.32 x 5.5 x 1.73 inches)

Weight:

- 2Kg. (4.48 lb)

Temperature:

- Operating: 0° ~ 40° C (32° ~ 104° F)
- Storage: -10° ~ 70° C (14° ~ 158° F)

Humidity:

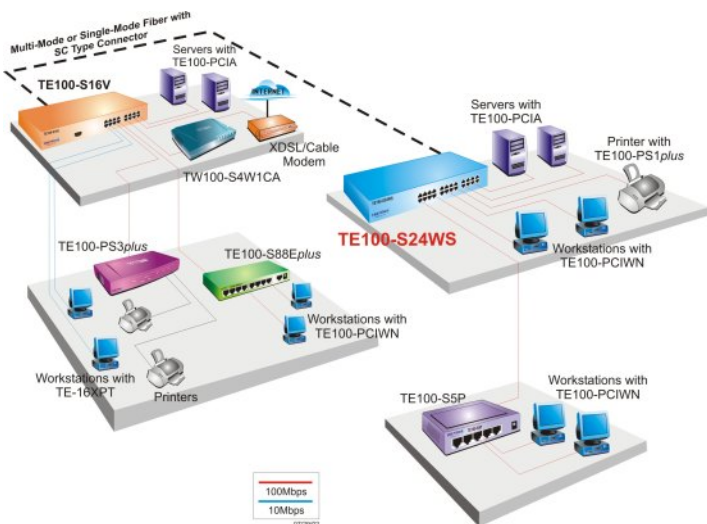
- 10% ~ 90% (no-condensing)

Certifications:

- FCC Class A, CE Mark A, VCCI-A



NETWORKING SOLUTIONS



To Order Please Call:
1-888-326-6061

PRODUCT INFORMATION

- **TE100-S24WS:** 24-Port 10/100Mbps web-based Smart Switch with Fiber Slot (Rack Mount)
- **TE100-S16V:** 16-Port 10/100Mbps Smart Switch with Fiber Slot (Rack Mount)
- **TE100-S24V:** 24-Port 10/100Mbps Smart Switch with Fiber Slot (Rack Mount)
- **TE100-SFXM:** SC-type multi-mode 2Km fiber slide-in module for Smart Switch
- **TE100-S15M:** SC-type single-mode 15Km fiber slide-in module for Smart Switch

ORDERING INFORMATION

TRENDware International, Inc.

3135 Kashiwa Street
Torrance, CA. 90505. USA
Tel: 310-891-1100
Fax: 310-891-1111
Web: www.TRENDNET.com
Email: sales@trendware.com

