



TE100-S22

TRENDnet 2-Port 10/100Mbps NWay Auto-sensing Switching Hub

The TE100-S22 is a trend that won't go out of style that can easily link 10Mbps and 100Mbps network segments. The TE100-S22 is a switching hub that allows you to connect as many hubs as needed to overcome Fast Ethernet Class II limitation. With its plug and play capabilities, the TE100-S22 is easy to install. In addition, the TE100-S22 is equipped with a variety of LED's for easy viewing and troubleshooting.

FEATURES

- Compliant with IEEE 802.3 10Base-T, IEEE 802.3u 100Base-TX standard
- Supports two RJ-45 10/100Mbps auto-sensing ports
- 10/100Mbps auto-negotiation and auto-sensing on all ports
- Full/half duplex operation for each port
- Store-and-forward packet switching
- Built-in address self-learning mechanism
- Built-in 120 KB packet buffer per port
- MDI-X/MDI selection switch, no cross-over cable required
- 5-years warranty

TREND SPEC'S

Protocol:	CSMA/CD
Speed:	10Mbps (half duplex) / 20Mbps (full duplex) for 10Base-T 100Mbps (half duplex) / 200Mbps (full duplex) for 100Base-TX
Cabling:	CAT 3, 4, 5 UTP/STP for 10Base-T CAT 5 UTP/STP for 100Base-TX
LED's:	Power, Link, Transmit, Receive and 10/100Mbps status
Power:	External Power Supply, 600mA, 12V
Dimensions:	201 x 122 x 30 mm / 7.9" x 4.8" x 1.2" (L x W x H)
Weight:	685 g / 1.5 lb
Operating:	0° to 50° C
Storage:	-20° C to 80° C
Humidity:	10% - 90% (non-condensing)
Certification:	FCC Class A, UL, CSA, CE

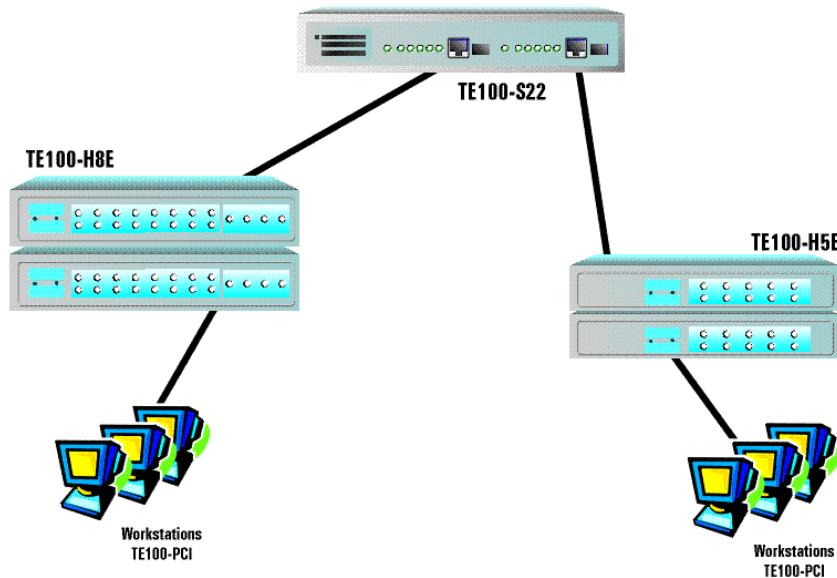
TE100-S22

**TRENDnet 2-Port 10/100Mbps N-way
Auto-sensing Switching Hub**

TOP REASONS THE TE100-S22 IS A LASTING TREND

- Easy Installation:** Designed to easily link 10Mbps and 100Mbps network segments.
Simple Installation: With plug and play capability, the TE100-S22 is ready for use quickly.
Affordable: Provides two ports of 10/100Mbps power for one low price.
Protection: Provides LED's for instant trouble shooting.

FAST ETHERNET SOLUTIONS



PRODUCT INFORMATION

TE100-S28	10-port 10/100Mbps Switching Hub
TE100-S22	2-port 10/100Mbps N-way Switching Hub
TE100-S88	8-port 10/100Mbps N-way Switching Hub
TE100-S1212	12-port 10/100Mbps N-way Switching Hub



To order please call: 888-326-6061
3135 Kashiwa Street, Torrance, CA 90505 • (310) 891-1100 • Fax: (310) 891-1111
• Sales: sales@trendware.com • Support: techsupport@trendware.com