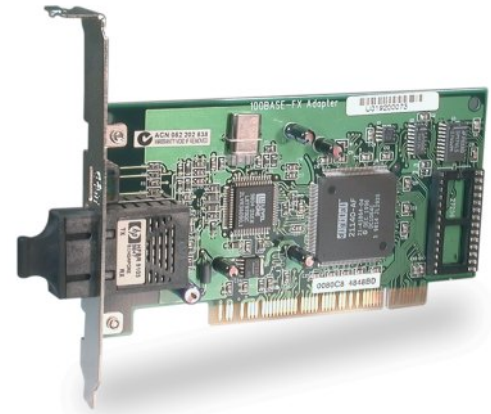




TE100-PCIFX 100Base-FX Fast Ethernet Adapter for PCI

TRENDnet's TE100-PCIFX 100Mbps PCI Fiber Optic Adapter operates in the 32-bit bus master mode, delivering at multi-megabits per second with little stress on the host's CPU. It also supports both half- and full-duplex modes. When connected to a switch in full-duplex the network speed can be increased to 200Mbps, making the adapter an ideal NIC for the high-speed server. The TE100-PCIFX adapter permits the PC to situate up to 2km away from the connected hub or switch where cable distance is greater than the standard 100 meters copper wire. TRENDnet's TE100-PCIFX is the perfect choice where twisted pair cabling is an issue in the network environment.



FEATURES

- Complies with IEEE 802.3u 100Base-FX standard
- 32-bit PCI Bus Master data transfer rate
- 100Mbps Fast Ethernet connection
- Supports half- and full-duplex modes
- Supports 2km fiber cable long transfer distance
- Auto-assignment of IRQ and I/O address
- Easy-to-view diagnostic LEDs
- Low network command processing overhead
- DEC intelligent Fast Ethernet controller
- Supports complete self-configuration and driver support
- 5 Year Warranty

BENEFITS

- **Performance:**
Operates in the 32-bit bus master mode, and transfers data directly to/from the host's memory
- **Expandability:**
Standard SC fiber connectors are used for easy and reliable connection
- **Flexibility:**
Supports all major network operating systems
- **Reliability:**
With 100/200Mbps speeds, our TE100-PCIFX offers a 5 year warranty

TE100-PCIFX

100Base-FX Fast Ethernet Adapter for PCI

SPECIFICATIONS

Standards:

- IEEE 802.3u 100Base-FX

Data Transfer Rate:

- 100Mbps (half-duplex) / 200Mbps (full-duplex)

Protocol:

- CSMA/CD

Connectors:

- Standard SC fiber connector

Diagnostic LEDs:

- Full-duplex, Link, Activity, and Collision

Network Drivers:

- Novell Netware 3.x/4.x, ODI driver, NetWare Client 32, Windows NT/95/98 Windows for Workgroups, IBM OS/2 Warp Server, and NDIS driver, and other major software

Power Consumption:

- 4 Watts Max.

Dimensions:

- 140 x 74 mm (5.52 x 2.92 inches)

Weight:

- 76 g (0.17 lbs.)

Temperature:

- Operating: 0° to 55° C
- Storage: -20° to 80° C

Humidity:

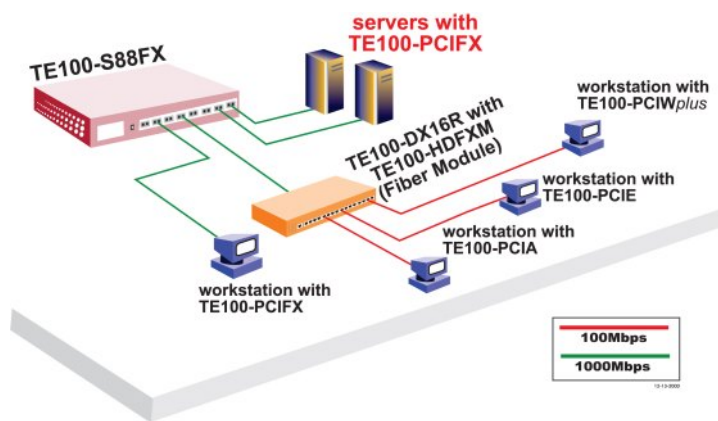
- 10 % to 90 % (non-condensing)

Certifications:

- FCC Class B, CE



NETWORKING SOLUTIONS



Fast Ethernet Solution for
TE100-PCIFX

PRODUCT INFORMATION

- TE100-PCIFXplus: 100Base-FX Fast Ethernet Fiber Adapter for PCI
- TE100-PCIFX: 100Base-FX Fast Ethernet Adapter for PCI
- TE100-S88FX: 8-Port 100Base-FX Fast Ethernet Switch
- TE100-S86FX: 8-port (6 x 100Base-FX, 2 x 10/100Mbps) Fast Ethernet Switch
- TE100-S81FX: 6-port (1 x 100Base-FX, 7 x 10/100Mbps) Fast Ethernet Switch
- TE100-TF: 100Base-TX to 100Base-FX SC-type converter
- ETH-800I: EIA-19" Rack-Mount Kit for TEG-S18TX

ORDERING INFORMATION

TRENDware International, Inc.

3135 Kashiwa Street
Torrance, CA. 90505. USA
Tel: 310-891-1100
Fax: 310-891-1111
Web: www.TRENDNET.com
Email: sales@trendware.com



To Order Please Call:
1-888-326-6061