

TE100-PC16 **10/100Mbps PCMCIA Ethernet Cards**

The perfect solution for connecting to today's high-speed LAN through your laptop computer is TRENDnet's TE100-PC16 Fast Ethernet Card.

TRENDnet's TE100-PC16 supports full duplex mode making data rates up to 200Mbps. Plug and Play compatible, the TE100-PC16 provides easy installation that is done minutes. And the TE100-PC16 is fully compatible with your existing 10Mbps Ethernet.



FEATURES

- PCMCIA 2.1/JEIDA 4.1 compliant
- 10Mbps or 100Mbps data rates auto-negotiation
- Feature full duplex mode that doubles the network connection speed
- Diagnostics LED indicators: LINK, ACT, and 10/100Mbps
- Media coupler support both Category 3/5 (100Base-T) and CAT 5 (100Base-TX)
- Support all major Network Operating Systems (NOS)
- Menu-driven installations utility and LAN diagnostics program included
- PC Card hot swap supported
- Ultra low power consumption
- Innovative power-down mode support
- Compatible with extensive notebook models
- 5 Year Warranty

BENEFITS

- **User Friendly:**
Just plug any of these cards into your workstation and it's ready to go!
- **Speed:**
Each card is capable of 100Mbps performance when you need it.
- **Versatility:**
Provides 10/100Mbps performance
- **Affordability:**
The PCMCIA Card can support a variety of software.



TE100-PC16

10/100Mbps PCMCIA Ethernet Cards

SPECIFICATIONS

Standards:

- IEEE 802.3 for 10Base-T, and IEEE 802.3m for 100Base-TX, PCMCIA CardBus PC Card Standard (TE100-PCBUS)

Cabling:

- CAT 3, 4, 5 UTP/STP for 10Base-T
- CAT 5 for 100Base-TX

LED'S:

- ACT, Link, 10/100 Mbps

Card and Socket Service Support:

- PC Card Standard, Windows NT 4.X direct enabler, DOS/Windows 3.1 direct enabler

Network Driver's:

- Windows XP, Windows NT 3.5x & 4.x, Windows 3.1 (DOS) Windows 95/98, & OSR2, Windows for Workgroups, Novell Netware 3.x & 4.x Client, Personal Netware, Netware Microsoft LAN Manager, Artisoft LANtastic, IBM LAN Support, DEC Pathworks, FTP, PC/TCP, Packet Driver

Temperature:

- Operating: 32° to 140° F (0° to 60°C)
- Storage: 4° to 158° F (-15.5° to 70°C)

Humidity:

- 10% to 95% non-condensing

Power Consumption:

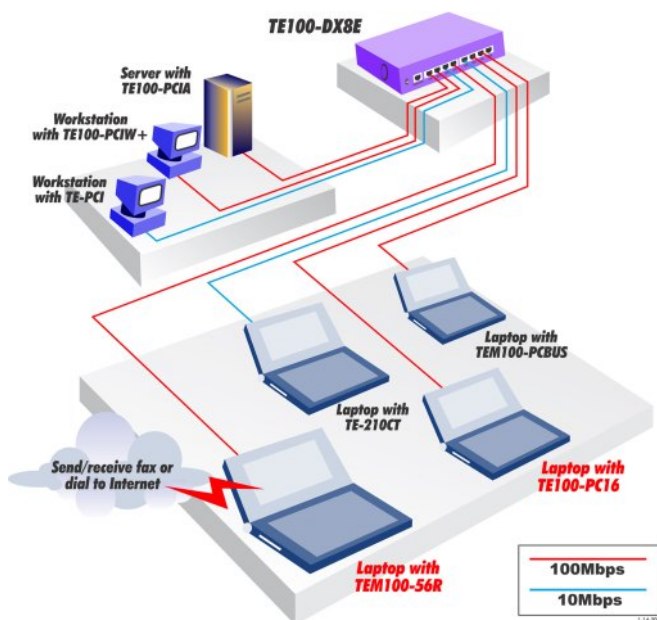
- Operation: +3.3V, 300mA (Max.)
- Power-Down: +3.3V, 80mA

Certification:

- FCC, UL, CE



NETWORKING SOLUTIONS



To Order Please Call:
1-888-326-6061

PRODUCT INFORMATION

- **TE100-PC16:** 10/100Mbps PCMCIA Fast Ethernet Card
- **TE100-PCBUS:** 10/100Mbps PCMCIA 32-bit CardBus Ethernet Card
- **TEM100-56:** 10/100Mbps PCMCIA Ethernet + 56K Fax Modem

ORDERING INFORMATION

TRENDware International, Inc.
3135 Kashiwa Street
Torrance, CA. 90505. USA
Tel: 310-891-1100
Fax: 310-891-1111
Web: www.TRENDNET.com
Email: sales@trendware.com

