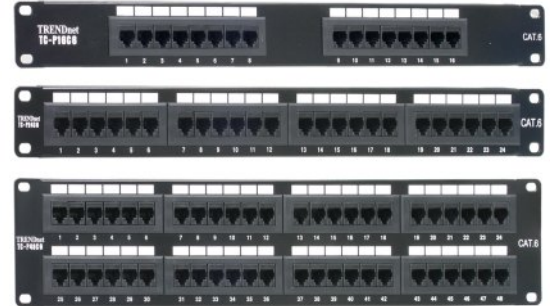




## TC-P16C6

### 16, 24, 48-Port Cat.6 RJ-45 UTP Rack Mount Patch Panels

Prepare yourself for Copper Gigabit Ethernet with TRENDnet's Cat. 6 RJ-45 UTP Patch Panels. These patch panels are certified for 250Mhz Category 6, which are perfect for Copper Gigabit Ethernet connections. TRENDnet's 16/24/48-port Cat. 6 Patch Panels are ideal for Ethernet, Fast Ethernet and Copper Gigabit Ethernet (1000Base-T) network applications. Using TRENDnet's Cat. 6 products now, will prepare you for the high bandwidth network in the future without re-cabling your network.



#### FEATURES

- Meets ANSI/EIA/TIA 568-B.2-1 and ISO/IEC 11801 Standards
- New version 110D IDC type terminal blocks (use 110 or Krone type tool)
- Color-coded labeling for T568A and T568B wiring schemes
- 80° angle type (horizontal)
- 1000Base-T Copper Gigabit Ethernet ready
- Compatible with Cat. 3, 4, 5, 5e, and 6 cabling
- Works perfectly with TC-PDT Punch Down Tool
- Operating temperature: -40° ~ 80° C (-40° ~ 176° F)
- UL E157358 listed
- 1-year warranty

#### PRODUCT INFORMATION

- **TC-P16C6:** 16-Port Cat. 6 RJ-45 UTP Rack Mount Patch Panels
- **TC-P24C6:** 24-Port Cat. 6 RJ-45 UTP Rack Mount Patch Panels
- **TC-P48C6:** 48-Port Cat. 6 RJ-45 UTP Rack Mount Patch Panels
- **TC-1KC5EG:** 1,000 Feet Solid Cat. 5e UTP Cable
- **TC-RJ45E/100:** 100 Count Cat. 5e RJ-45 UTP Connectors
- **TC-PDT:** Punch Down Tool with 110 and Krone Blade
- **TC-NT2:** Network Cable Tester (TP and Coax)

#### ORDERING INFORMATION

**TRENDware International, Inc.**  
3135 Kashiwa Street  
Torrance, CA. 90505. USA  
Tel: 310-891-1100  
Fax: 310-891-1111  
Web: [www.TRENDNET.com](http://www.TRENDNET.com)  
Email: [sales@trendware.com](mailto:sales@trendware.com)

**To Order Please Call:**  
**1-888-326-6061**