

TU2-H2PC

Quick Installation Guide

Version 08.23.2005



TRENDnet[®]
TRENDware, USA
What's Next in Networking

Table of Contents

English	1
1. Prepare for Installation	1
2. Product Detail/ Hardware Installation	2
3. Driver Installation	3
4. Verify Installation	5
Troubleshooting	6

English QIG

1. Prepare for Installation

Thank you for purchasing the TRENDnet TU2-H2PC 2-port USB 2.0 CardBus PC card.

This guide will help you set-up your 2-port USB 2.0 CardBus Adapter. Following the installations should be quick and easy. If you run into problems, please refer to the Troubleshooting section. If you need further technical support, please visit www.TRENDNET.com or call technical support by phone.

Verify Package Contents

Please make sure you have everything in the box:



Minimum System Requirements

1. Pentium 266Mhz or faster processor
2. 64MB RAM or more
3. Available 32-bit CardBus Type II slot
4. Windows 98SE/ME/2000/2003 or Mac OS 10.1 or later

2. Product Detail/ Hardware Installation

Product Detail

The USB 2.0 2-Port CardBus Adapter has 2 high speed USB ports.



2 USB 2.0 ports for connecting external USB peripherals

Hardware Installation

1. Boot up your laptop PC and make sure Windows's Desktop is properly loaded.
2. Insert the TU2-H2PC into an available PC Card slot
3. Make sure the TU2-H2PC is inserted all the way to the end of the slot



4. Your laptop should emit a beeping sound that indicates newly installed hardware.

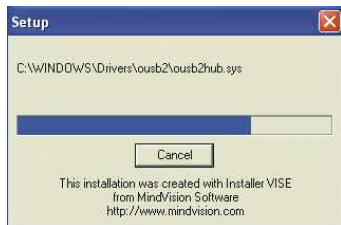
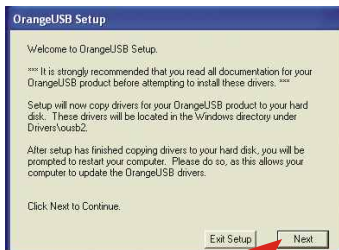
3. Driver Installation

Windows 98SE/ME/2000/XP/2003

After inserting the TU2-H2PC, the “Found New Hardware” will appear. Windows will automatically detect and ask you to install the USB 2.0 Driver for the TU2-H2PC.

NOTE: Click the cancel button (this applies for Windows 98SE/ME/2000/XP) and install the USB Driver first as follow.

1. Insert the TU2-H2PC Driver CD-ROM into your computer's CD-ROM drive;
2. Double-click the “**My Computer**” icon on your Windows desktop.
3. Double-click the “**CD ROM**” drive, the “**Driver**” Folder, and the “**Windows**” Folder.
4. Double-click the file name “**setup.exe**” to install the USB 2.0 Driver for Windows.



5. Click **Close** and restart the computer.



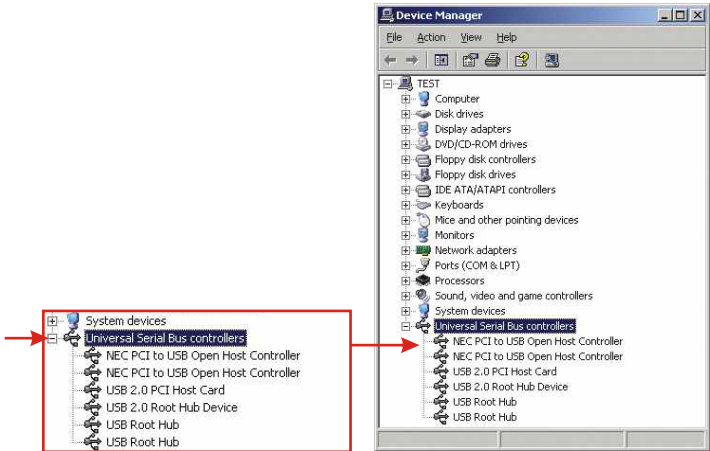
After your computer reboots, the “Found New Hardware” will appear. Windows ME/2000/XP/2003 will automatically detect and install a USB 2.0 driver for the TU2-H2PC.

Congratulations!
Installation is now complete.

NOTE: If you would like to verify that the TU2-H2PC has been installed properly for your windows, go to the Verify Installation section.

4. Verify Installation

1. Click **Start**, and then click **Control Panel**. For Windows 2000, click **Start**, highlight **settings**, and click **Control Panel**.
2. Double-click the System icon. On the Hardware tab, click **Device Manager** tab.
3. Expand the “**Universal Serial Bus controller**” heading to verify that the Universal Serial Bus controller has been installed.



Troubleshooting

Q1. Can I connect or disconnect the USB cable while the computer is on?

A1. Yes, you can connect or disconnect the USB cable, or any external USB device while the computer is on, because the USB interface is Plug-and-Play and hot-pluggable.

Q2. I have a USB 1.1 cable. Can it work with USB 2.0 devices?

A2. Yes, it works but it may cause problems for connecting high-speed USB 2.0 external peripherals. Therefore it is recommended that you use certified USB 2.0 cable.

Q3. After successful installation of the TU2-H2PC 2-Port USB 2.0 CardBus PC card, I connected my external USB device to the USB port, but it doesn't seem to work. What should I do?

A3. If you have an external AC power adapter comes with the external USB device, connect the AC power adapter to the device and power on the device. Also make sure that you have installed the correct driver for your external USB device in Windows.

If you have any questions regarding the TU2-H2PC 2-Port USB 2.0 CardBus PC Card, please contact Trendware Technical Support Department.

Certifications

This equipment has been tested and found to comply with FCC and CE Rules. Operation is subject to the following two conditions:

- (1) This device may not cause harmful interference.
- (2) This device must accept any interference received.
Including interference that may cause undesired operation.

NOTE: THE MANUFACTURER IS NOT RESPONSIBLE FOR ANY RADIO OR TV INTERFERENCE CAUSED BY UNAUTHORIZED MODIFICATIONS TO THIS EQUIPMENT. SUCH MODIFICATIONS COULD VOID THE USER'S AUTHORITY TO OPERATE THE EQUIPMENT.





What's Next in Networking

Product Warranty Registration

Please take a moment to register your product online.
Go to TRENDware's website at <http://www.TRENDNET.com>

TRENDnet Technical Support

US/Canada Support Center

Contact

Telephone: 1(310) 626-6252

Fax: 1(310) 626-6267

Email: support@trendnet.com

Tech Support Hours

7:30am - 6:00pm Pacific Standard Time
Monday - Friday

European Support Center

Contact**Telephone**

Deutsch : +49 (0) 6331 / 268-460

Français : +49 (0) 6331 / 268-461

08-00-90-71-61 (numéro vert)

Español : +49 (0) 6331 / 268-462

English : +49 (0) 6331 / 268-463

Italiano : +49 (0) 6331 / 268-464

Dutch : +49 (0) 6331 / 268-465

Fax: +49 (0) 6331 / 268-466

Tech Support Hours

8:00am - 6:00pm Middle European Time
Monday - Friday

TRENDware International, Inc.
3135 Kashiwa Street. Torrance, CA 90505
<http://www.TRENDNET.com>