

TU-S9

**USB to Serial Adapter
Quick Installation Guide**

**Guide d'installation rapide du
Adaptateur de port USB vers port série**

**Anleitung zur Schnellinstallation des
Seriell-Adapter TU-S9**

**Guía de Instalación Rápida
Adaptador de puerto USB a Serial.**

Version 08.04.04



TRENDnet[®]
TRENDware, USA
What's Next in Networking

Table of Contents

English	1
1. Prepare for Installation	1
2. Introduction	2
3. Product Features	3
4. Hardware Installation	4
5. Install Drivers	5
6. Verify Installation	10
Troubleshooting	12

English QIG

1. Prepare for Installation

Thank you for purchasing TRENDnet's TU-S9 USB to Serial Adapter.

This guide will help you set up your USB to Serial Adapter. Following the installation should be quick and easy. If you run into problems, please refer to the Troubleshooting section. If you need further technical support, please visit www.TRENDNET.com or call technical support by phone.

Verify Package Contents

Please make sure you have everything in the box:



Minimum Hardware Requirements

1. Pentium 233Mhz or faster with at least 64MB RAM
2. USB 1.1/2.0 port on your computer
3. Windows XP, 2000, ME, 98SE or Mac OS 9.1 or later

2. Introduction

The TU-S9 is an external USB to Serial Adapter that allows you to connect to external serial devices.

Hardware and Software Support

The TU-S9 USB to Serial Adapter is compatible with all popular external serial peripherals including scanners, modems, and PDAs. It converts USB to a standard RS232 Serial interface and is compatible with the following operating systems: Windows 98SE/ME/2000/XP/2003 Server and Mac OS 9.1 or later.

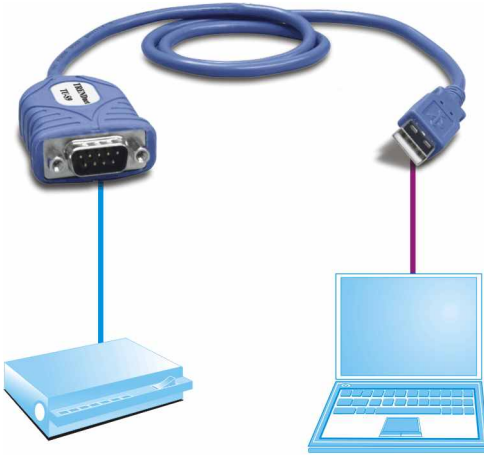
Plug-N-Play and Hot-Pluggable

Because the TU-S9 USB to Serial Adapter connects to your computer via the USB interface, it is both Plug-and-Play and Hot-Pluggable.

TRENDnet's TU-S9 USB to Serial Adapter is perfect for use at home or in the office.

3. Product Features

USB TO SERIAL CONVERTER (TU-S9)



Serial Modem

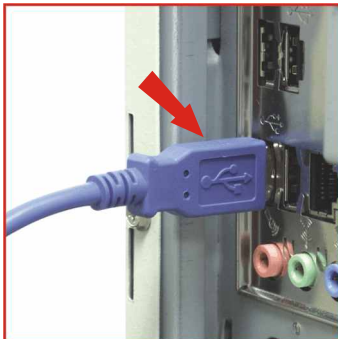
Notebook



4. Hardware Installation

Because the TU-S9 is hot-pluggable, you can connect or disconnect the TU-S9 SB while the computer on.

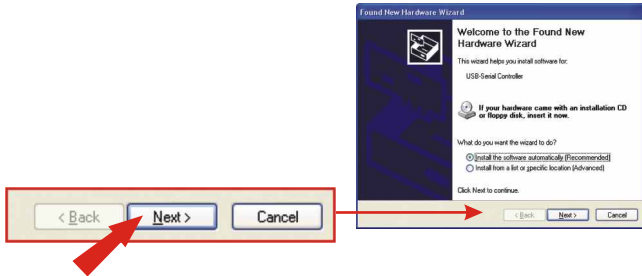
Connect the TU-S9's USB connector to a computer's USB port.



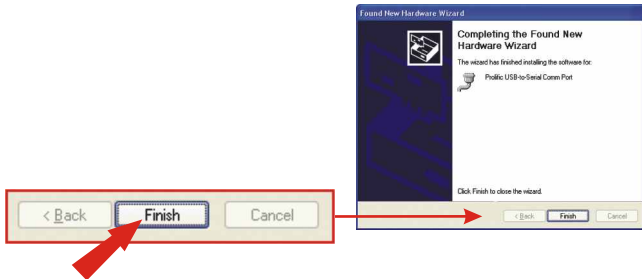
5. Install Drivers

Windows XP

1. Once you connect the TU-S9 to your computer, Windows XP will automatically detect the device. Insert the TU-S9 Driver CD-ROM into your computer's CD-ROM drive and click **Next** to install the driver.

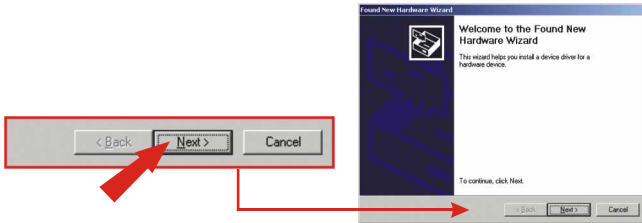


2. Click **Finish**.

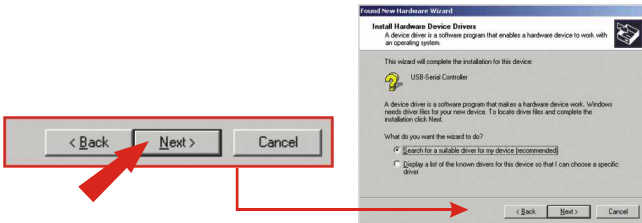


Windows 2000

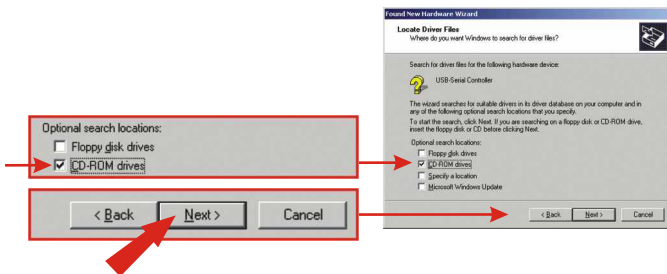
1. Once you connect the TU-S9 to your computer, Windows 2000 will automatically detect the device. Insert the TU-S9 Driver CD-ROM into your computer's CD-ROM drive and click **Next** to install the driver.



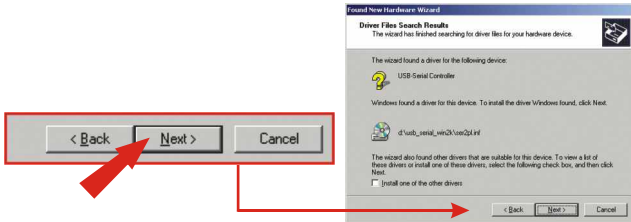
2. Click **Next**.



3. Select **CD-ROM drives** and click **Next**.



4. Windows found the driver, click **Next**.

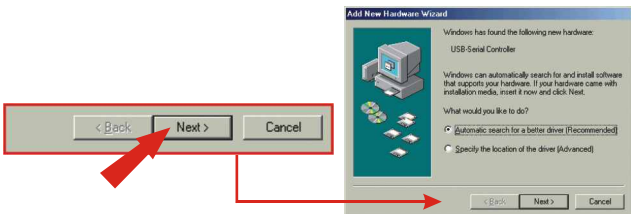


5. Click **Finish**.

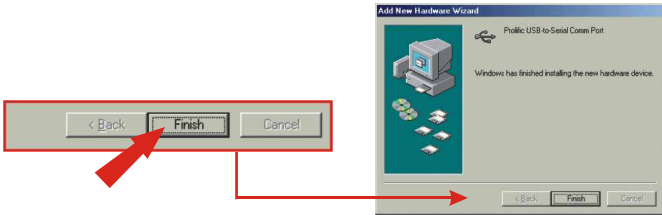


Windows ME

1. Once you connect the TU-S9 to your computer, Windows Me will automatically detect the device. Insert the TU-S9 Driver CD-ROM into your computer's CD-ROM drive and click **Next** to install the driver.

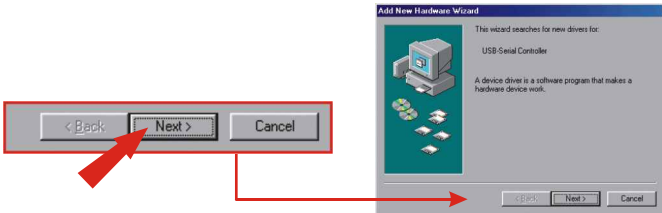


2. Click **Finish**.

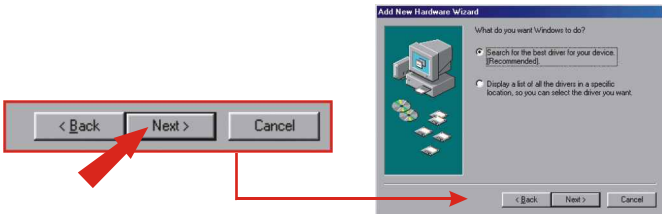


Windows 98SE

1. Once you connect the TU-S9 to your computer, Windows 98SE will automatically detect the device. Insert the TU-S9 Driver CD-ROM into your computer's CD-ROM drive, and click **Next** to install the driver.



2. Click **Next**.

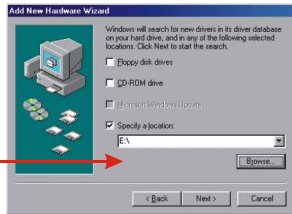
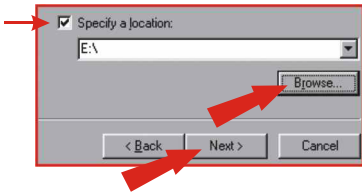


3. Click **Next**.



4. Select **Specify a Location**, and then click the **Browse** button.

5. From the "Browse for Folder" window that has appeared, select the icon for the CD-ROM drive containing the TU-S9 CD-ROM and click **OK**.



6. After Windows finds the driver, click **Next**.



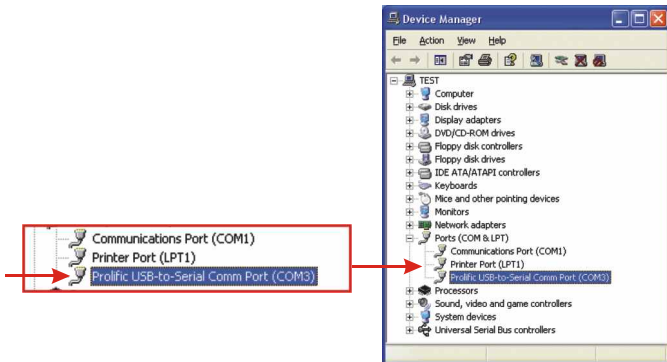
7. Click **Finish**.



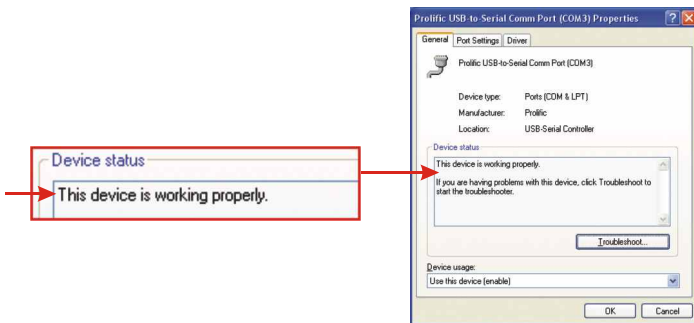
6. Verify Installation

Windows 2000/XP

1. Click **Start**, and then click **Control Panel**.
2. Double-click the **System** icon. On the **Hardware** tab, click **Device Manager** tab.
3. Expand the “Ports (COM & LPT)” heading to verify that the **Prolific USB-to-Serial Comm Port** device has been installed.

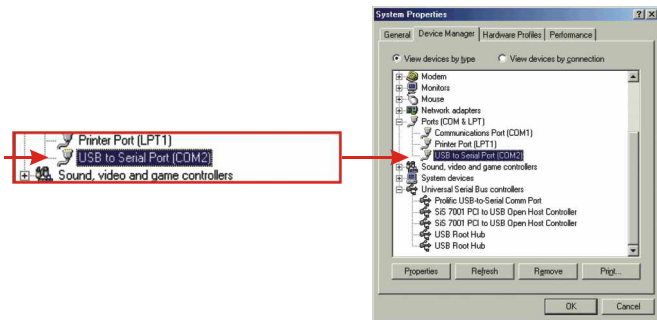


4. Double-click the **Prolific USB-to-Serial Comm Port** to open its Properties window.
5. Verify that the device status message says **This device is working properly**.

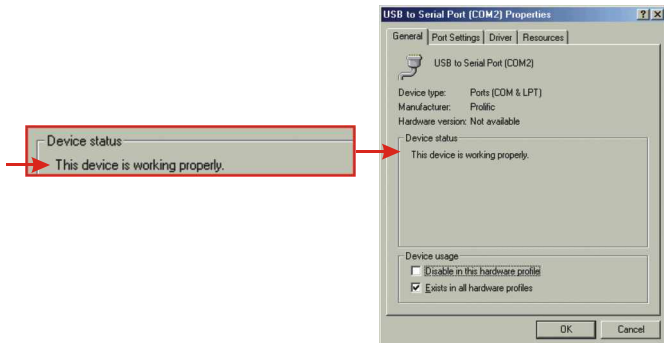


Windows 98SE/ME

1. Click **Start**, click Settings, then click on **Control Panel**.
2. Double-click the **System** icon, and click **Device Manager** tab.
3. Expand the “Ports (COM & LPT)” heading to verify that the **USB to Serial Port** device has been installed.



4. Double-click the **USB to Serial Port** to open its Properties window.
5. Verify that the device status message says **This device is working properly**.



Q1: Can I use the TU-S9 with my serial keyboard, mouse, or Joystick?

A1: The TU-S9 does not support interrupt transfer mode devices, so if your serial keyboard, mouse, or joystick is an HID Device, it is not supported.

Q2: Can I connect or disconnect the USB cable while the computer is on?

A2: Yes, you can connect or disconnect the USB cable while the computer is on, because the USB interface is Plug-and-Play and hot-pluggable.

Q3: My computer has a USB interface but the USB port doesn't seem to work. What should I do?

A3: You must enable the USB option in your BIOS settings for your computer's USB port to work. For more information regarding BIOS settings, please refer to your computer's User Manual.

If you have any questions regarding the TU-S9 USB to Serial Adapter, please contact Trendware's Technical Support Department.

Contact Technical Support

Telephone: +1-310-626-6252

Fax: +1-310-626-6267

Website: www.TRENDNET.com

E-mail: support@trendware.com

Technical Support Hours

7:00AM ~ 6:00PM, Monday through Friday

Pacific Standard Time (except holidays)

Certifications

This equipment has been tested and found to comply with Part 15 of the FCC Rules. Operation is subject to the following two conditions:

- (1) This device may not cause harmful interference.
- (2) This device must accept any interference received.
Including interference that may cause undesired operation.

This equipment is in compliance with the requirements of the following regulations: EN 55 022: CLASS B



TRENDware, USA

What's Next in Networking

Product Warranty Registration

Please take a moment to register your product online.
Go to TRENDware's website at <http://www.TRENDNET.com>

TRENDware International, Inc.
3135 Kashiwa Street
Torrance, CA 90505

<http://www.TRENDNET.com>