

TFM-CF56
CompactFlash 56K Modem Card

Quick Installation Guide
For Pocket PC



The Federal Communications Commission Statement

This equipment has been tested and found to comply with the limits for a Class B digital device, pursuant to part 15 of the FCC Rules. These limits are designed to provide reasonable protection against harmful interference in a residential installation. This equipment generates, uses and can radiate radio frequency energy and, if not installed and used in accordance with the instructions, may cause harmful interference to radio communications. However, there is no guarantee that interference will not occur in a particular installation. If this equipment does cause harmful interference to radio or television reception, which can be determined by turning the equipment off and on, the user is encouraged to try to correct the interference by one or more of the following measures:

Reorient or relocate the receiving antenna.

Increase the separation between the equipment and receiver.

Connect the equipment into an outlet on a circuit different from that to which the receiver is connected.

Consult the dealer or an experienced radio/TV technician for help.

You are cautioned that changes or modifications not expressly approved by the party responsible for compliance could void your authority to operate the equipment.

COPYRIGHTS & TRADEMARKS

Microsoft, Windows and the Windows logo are registered trademarks of the Microsoft Corporation. All other trademarks and brand names are the property of their respective proprietors.

Contents

✍ ✍ Package Contents	5
✍ ✍ Hardware Installation	6
✍ ✍ Configuring a Modem Connection on Your Pocket PC	7
✍ ✍ Setting up your Pocket PC for POP3 Email.....	11
✍ ✍ Connecting to ActiveSync using a Modem.....	14

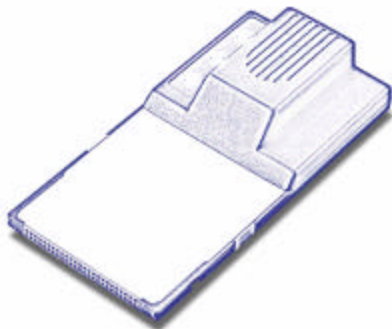
Package Contents

Please ensure that the following items are included in your package. If any items are missing contact your dealer.

?? CompactFlash 56K Modem Card

?? Analog Phone Cable

?? Quick Installation Guide



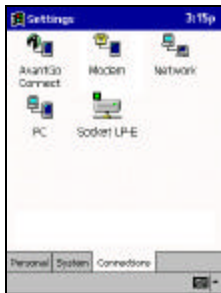
Hardware Installation

1. Firmly insert the CF Modem card into the CompactFlash slot on top of your pocket PC with the 50-pin connector facing the CompactFlash slot. You will hear a click when firmly connected.
2. Please Press YES to skip the warning message.
3. Connect the analog phone cable to RJ-11 of the CF modem. And insert the other end of the analog phone cable into a standard telephone outlet.



Configuring a Modem Connection on Your Pocket PC

1. On your Pocket PC, tap the **Start** button and choose **Settings**.
2. Tap the **Connections** tab and choose **Modem** icon. Note: Consult with your network administrator for specific settings.
3. Tap **New Connection...**



4. Type in a name in the **Enter a name** for the connection text box.
5. Choose **CompactFlash 56K Modem** from the **Select a modem** list.
6. Choose **Baud Rate** for your CF modem. For example: **115200**. Tap the **Advanced** button.



7. Tap the **Name Servers** tab.
8. According to your ISP account, input appropriate address if necessary.
9. Tap **OK** at top left to continue.



10. Tap the **Next** button.

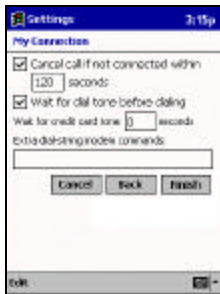


11. Type in your local ISP access number.



12. Tap **Next** to continue.

13. Tap **Finish** to finish.



Setting up your Pocket PC for POP3 Email

1. Launch the **Inbox** from your Pocket PC. Tap **Services**, followed by **New Service** from the menu. Tap **Next**



2. In the Server Field, enter the incoming mail server (usually a POP3) and your User ID and Password. If you are having problems, please contact your ISP. Tap Next.



3. Leave the **Domain** name blank unless you are connecting to a Microsoft NT server. The **SMTP** server will usually be the same as your POP3 server but check with your ISP to make sure. The **return address** is your email address. Tap **Next**.



4. These are email options. Choose those options that you wish to use. Tap **Next**.



5. The last screen has options for email retrieval. You can select the options on how you view mail. If you choose **Get Full Copy of Messages**, you download the entire email. If you choose **Get Message Headers Only**, you download only the summary of the email. Choose the amount of lines you wish to download. If you use Microsoft Outlook, check **Get Message Requests** if you want to retrieve and respond to meeting requests. Check **Get File Attachments** if you wish to download file attachments. This may slowdown your download time.



Connecting to ActiveSync using a Modem

Before you begin:

- ✍ Setup a partnership between your device and the desktop computer using serial cable, cradle, or infrared connection. See Microsoft ActiveSync Help if you have more questions.
- ✍ If your computer is running Windows NT 4.0, you need to install Remote Access Service (RAS). RAS is included with Windows 2000.
- ✍ If you are running Windows 95, you need to install Dial-Up Networking Upgrade (DUN) 1.3 or later.
- ✍ Install an internal or external modem

Configuring RAS, DUN, and modem equipment to work with ActiveSync

If your computer is running Windows NT 4.0 or Windows 2000, you will need to configure RAS to work with ActiveSync. If your computer is running Windows 95/98, you will need to configure DUN to work with ActiveSync.

Configure RAS and modem equipment on Windows NT 4.0

There are three steps:

1. Install network components.
2. Configure RAS.
3. Configure the user account.

Install network components

1. Click **Start, Settings**, and then **Control Panel**.
2. Double-click the Network icon. If you see a Network Configuration Wizard, then continue below. Otherwise, skip to the next section because networking is already installed.
3. In the **Network Configuration** box, click **Yes**.

4. Select **Wired to the network**, clear **Remote access to the network**, and then click **Next**.
5. Click **Select from list**.
6. In the **Network Adapters** box, select **MS Loopback Adapter** and click **Next**.
7. In the **Network Protocols** box, select **TCP/IP Protocol** and clear all other options.
8. Click **Next** three times to start installing the selected components.
9. In the **Windows NT Setup** box, enter the directory where your Windows NT source files are located and then click **Continue**.
10. In the **MS Loopback Adapter Card Setup** dialog box, click **Continue**. The default frame type will be selected.
11. In the **TCP/IP Setup** dialog box, click **No** when asked to use DHCP.
12. In the **Microsoft TCP/IP Properties** box, click the **IP Address** tab.

13. Make sure **MS Loopback Adapter** is selected.
14. Click **Specify an IP Address** and in the **IP Address box**, enter **1.1.1.1**.
15. In the **Subnet Mask** box, enter **0.255.255.255**.
16. Make sure the **Default Gateway** box is cleared.
17. Click **Next** on the next three dialog boxes, and then click **Finish** to complete the Networking Wizard.
18. Restart your desktop computer.

Configuring Remote Access Server (RAS)

1. Click **Start, Settings**, and then **Control Panel**.
2. Double-click the Network icon. Then click the **Services** tab.
3. From the **Network Services** list, select **Remote Access Service**, and then click **Properties**. If **Remote Access Service** is not listed, perform the following steps; otherwise, proceed to step 9:

4. Click the **Services** tab, and then click **Add**.
5. Select **Remote Access Service** from the list, and then click **OK**.
6. Provide your Windows NT Setup disks if instructed to.
7. In the **Add RAS Device**, select your modem.
8. Click **OK**, then leave the **Remote Access Setup** dialog box open.
9. In the **Remote Access Setup**, select your modem.
10. Click **Configure**, select **Receive calls only**, and then click **OK**.
11. In the **Remote Access Setup** dialog box, click **Network**.
12. In the **Network Configuration** dialog box, clear **Require data encryption**.
13. Under **Server Settings**, select **TCP/IP**, and then click **Configure**.
14. Select **This computer only** and select **Use static address pool**.

15. In the **Begin** box, enter **192.168.55.100**. In the **End** box, enter **192.168.55.112**.
16. Clear **Allow remote clients to request a predetermined IP address**.
17. Accept the default (recommended) responses for any messages that appear.
18. Click **Continue**, and then click **Close**.
19. Restart your desktop computer when prompted and reinstall any Windows NT 4.0 Service Packs.

Configure your user account

1. Click **Start, Programs, Administrative Tools**, and then **User Manager**.
2. In the top list box, double-click your user account.
3. Clear **Account Disabled**, and then clear **User Must Change Password at Next Logon**.

4. Select **Password Never Expires**.
5. Delete any passwords in the **Password** and **Confirm Password** boxes.
6. Click **Dialing**.
7. Select **Grant dialing permission to user** and **No Call Back**.

Configuring RAS on Windows 2000

Configure the desktop computer for incoming connections

1. Click **Start, Settings**, and then **Control Panel**.
2. Double-click the **Network and Dial-up Connections** icon.
3. Click **Make New Connection**.
4. Select **Accept incoming connections** and click **Next**.
5. Select the modem from the list of devices, and click **Next**.

6. Select options for allowing **Virtual Private Connections**, and click **Next**.
7. Check the users you want to be able to authenticate when connecting to the desktop from the device, and click **Next**.
8. **Internet Protocol (TCP/IP)** check box is selected, click **Next**, and then **Finish**.

Configure DUN on Windows 95/98

To call a modem attached to a desktop computer running Windows 95/98:

1. Install Dial-Up Adapter networking components.
2. Ensure the Dial-Up Adapter is enabled.
3. Install TCP/IP.
4. Check TCP/IP settings.
5. Enable the Dial-Up Server.

Install Dial-Up Adapter networking components

1. Windows 95 should download the Microsoft Dial-Up Networking 1.3 Upgrade for Windows 95 from the Microsoft Web site. Windows 98 includes this update.
2. Click **Start, Settings, Control Panel**, and then double-click the **Network** icon.
3. Look in the list of installed network components for an entry named **Dial-Up Adapter**.
4. Select **Adapter** and click **Add**.
5. Select **Microsoft** as the manufacturer, and select **Dial-Up Adapter** as the network adapter.

Ensure the Dial-Up Adapter is enabled

1. Click **Start, Settings, Control Panel**, and then double-click the **System** icon.

2. Make sure **Dial-Up Adapter** is enabled.
 - a) Click the **Device Manager** tab, and then double-click **Network adapters**.
 - b) Double-click **Dial-Up Adapter**.
 - c) On the **General** tab, confirm that the configuration listed as **Original Configuration (Current)** is selected in Windows 95 or that the **Disable in this hardware profile** and **Remove from this hardware profile** are unchecked in Windows 98.
3. Repeat step 2 for all Dial-Up Adapters listed.

Install TCP/IP

1. Click **Start, Settings, Control Panel**, and then double-click the **Network** icon.
2. Look in the list of installed network components for **TCP/IP -> Dial-Up Adapter**. If this entry exists, skip to the next section.
3. On the **Configuration** tab, click **Add**.

4. Select **Protocol**, and then click **Add**.
5. Select **Microsoft** as the manufacturer, select **TCP/IP** as the network protocol, and then click **OK**.

Check the TCP/IP settings

1. Click **Start, Settings, Control Panel**, and then double-click the **Network** icon.
2. In the list of installed network components on the **Configuration** tab, double-click **Dial-Up Adapter**.
3. On the **Bindings** tab, select only one entry that includes TCP/IP. (If it is displayed, select the entry named **TCP/IP -> Dial-Up Adapter**. Otherwise, select **TCP/IP**.)
4. Clear the box next to any other entry that refers to TCP/IP.
5. If you made changes, close all programs, and then restart your desktop computer.
6. Click **Start, Settings, Control Panel**, and then double-click the **Network** icon.

7. On the **Configuration** tab, select **TCP/IP -> Dial-up Adapter**, and then click **Properties**.
8. Click the **IP Address** tab, make sure that **Obtain an IP address automatically** is selected, and then close all boxes.
9. Close all programs and restart your desktop computer.

Enable the Dial-Up Server

In order to perform these steps you must have the **Dial-Up Networking Upgrade 1.3** installed on your computer.

1. Click **Start, Settings, Control Panel**, and then double-click the **Add/Remove Programs** icon.
2. Click **Windows Setup**, double-click **Communications** and check the **Dial-Up Server** option.
3. Double click **My Computer** on the Windows Desktop.
4. Double click **Dial-Up Networking**.
5. Click **Connections**, and then click **Dial-Up Server**.

6. Select the tab of the modem whose settings you wish to change.
7. Select **Allow Caller Access**.
8. If Share Level Access is enabled in the **Access Control** tab of the **Network** control panel, use **Change Password** to protect access to your PC. If User Level Access is enabled, you must follow these next steps to create a user account before using a modem to connect your mobile device to your computer.
9. Click **Add In** the **Caller Access** box.
10. Enter the user's name in the **Add User** box. Click **Add** when finished.

Connect your device to the desktop computer

Now select the modem in ActiveSync, configure your modem connection on your device, and connect using the modem connection on your device. See the Help menu in the ActiveSync window for more instructions.