

# TFM-560U

**56K (V.90) High Speed USB Fax Modem  
Quick Installation Guide**

**Guide d'installation rapide du  
fax modem USB à haut débit**

**Anleitung zur Schnellinstallation des  
Hochgeschwindigkeits-USB-Faxmodem**

**Guía de instalación rápida del  
Fax Módem USB de alta velocidad**

**Высокоскоростной факс-модем USB  
Руководство по быстрой установке**

**Version 11.22.04**



**TRENDnet**<sup>®</sup>  
TRENDware, USA  
**What's Next in Networking**

# Table of Contents

English .....	1
1. Prepare for Installation .....	1
2. Product Detail .....	2
3. Hardware Installation .....	3
4. Driver Installation .....	4
5. Verify Installation .....	14
Troubleshooting .....	17

# English QIG

## 1. Prepare for Installation

Thank you for purchasing the TRENDnet TFM-560U 56K (V.90) High Speed USB Fax Modem.

This guide will help you set up your 56K (V.90) High Speed USB Fax Modem. Following the installations should be quick and easy. If you run into problems, please refer to the Troubleshooting section. If you need further technical support, please visit [www.TRENDNET.com](http://www.TRENDNET.com) or call technical support by phone.

### Verify Package Contents

Please make sure you have everything in the box:



### Minimum System Requirements

1. Pentium 166Mhz or faster processor with at least 16MB of RAM
2. USB slot
3. Windows XP, 2000, ME, or 98SE

## 2. Product Detail

56K (V.90) High USB Fax Modem has one port that connects to the Internet and a second port to connect to a USB slot in your PC.



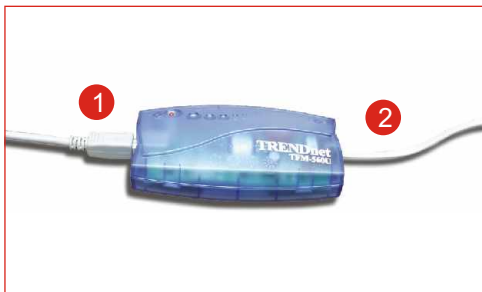
Connect to phone line



Connect to PC/Laptop's USB port

## 3. Hardware Installation

1. Plug one end of the USB cable into the USB slot on your PC. Plug the other end of USB cable into the USB port of the (V.90) USB Fax Modem.
2. Plug one end of the telephone cord into the telephone port of the (V.90) USB Fax Modem. Plug the other end of telephone cord into the telephone wall jack.



# 4. Driver Installation

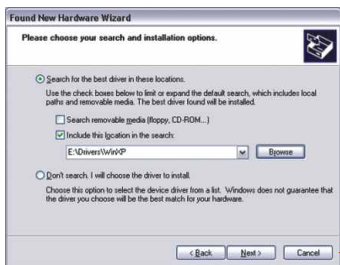
## Windows XP

After completing the modem hardware installation, the **Found New Hardware Wizard** will appear. Please insert the CD-ROM driver into your CD-ROM.

1. Click **Install from a list or specific location (Advanced)**. Click **Next**.

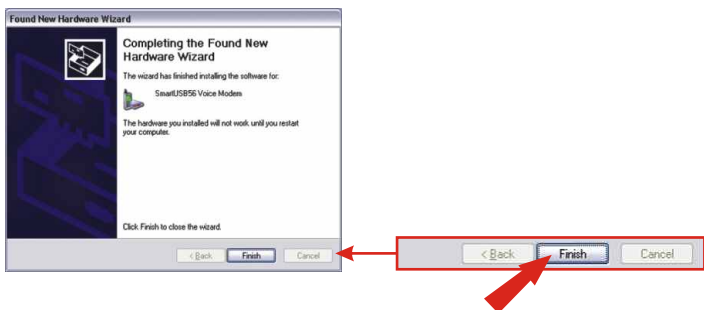


2. Click **Search for the best driver in these locations**, and Click **Include this location in the search**: Type E:\Drivers\WinXP in the text box. If your CD-ROM uses a different letter than E, then use a different letter (i.e. D:\Drivers\WinXP). Click **Next**.



**NOTE:** TRENDnet's TFM-560U 56K (V.90) has been fully tested under all supported Windows Operating Systems and has been approved for their functionality. For Windows XP, you will see a message regarding "not passed Windows Logo testing". Click Continue Anyway.

### 3. Click **Finish**.



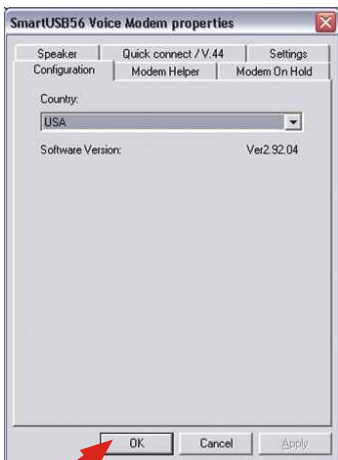
### 4. Click **Yes**.



### 5. After rebooting, open the **Control Panel** and double click the **Modem** icon.



6. Click the **Configuration** tab and select the country/region that the modem will be used. Click **OK**.



Congratulations!  
Installation is now complete.

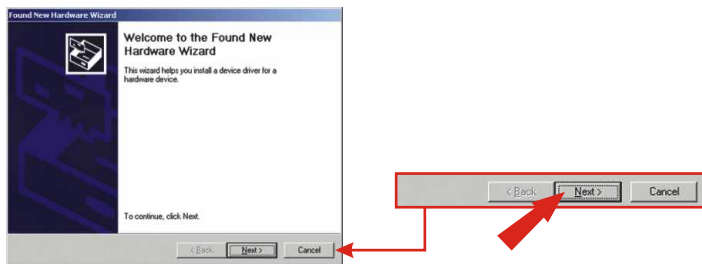
**Note:** If you would like to verify that the TFM-560U has been installed properly for your windows, go to the Verify Installation section.



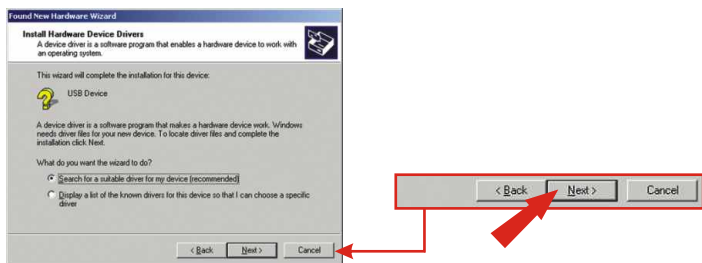
## Windows 2000

After completing the modem hardware installation, the **Found New Hardware Wizard** will appear. Please insert the CD-ROM driver into your CD-ROM.

### 1. Click Next.



### 2. Click Search for a suitable driver for my device (recommended). Click Next.



3. Click CD-ROM drives, and Click **Specify a location**. Click **Next**.



4. Type **D:\Drivers\Win2K** in the text box. If your CD-ROM uses a different letter than **D**, then use a different letter (i.e. **E:\Drivers\Win2K**). Click **OK**.



5. Click **Next**.



**NOTE:** TRENDnet's TFM-560U 56K (V.90) has been fully tested under all supported Windows Operating Systems and has been approved for their functionality. For Windows XP, you will see a message regarding "not passed Windows Logo testing". Click Yes.

6. Click **Finish**.

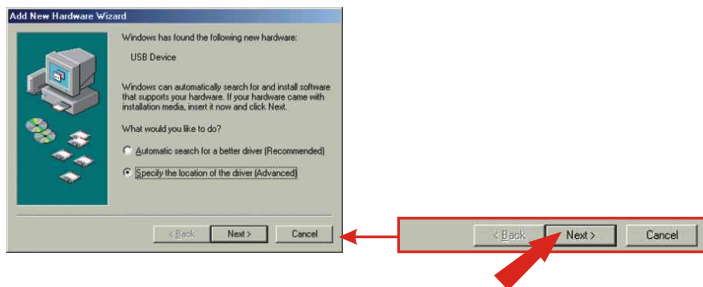
Congratulations!  
Installation is now complete.

**Note:** If you would like to verify that the TFM-560U has been installed properly for your windows, go to the Verify Installation section.

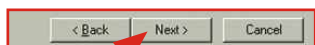
## Windows ME

After completing the modem hardware installation, the **Add New Hardware Wizard** will appear. Please insert the CD-ROM driver into your CD-ROM.

1. Click **Specify the location of the driver (Advanced)**. Click **Next**.



2. Click **Search for the best driver for your device. (Recommended)** and Click **Specify a location**. Type **D:\Drivers\WinMe** in the text box. If your CD-ROM uses a different letter than **E**, then use a different letter (i.e. D:\Drivers\WinMe). Click **Next**.



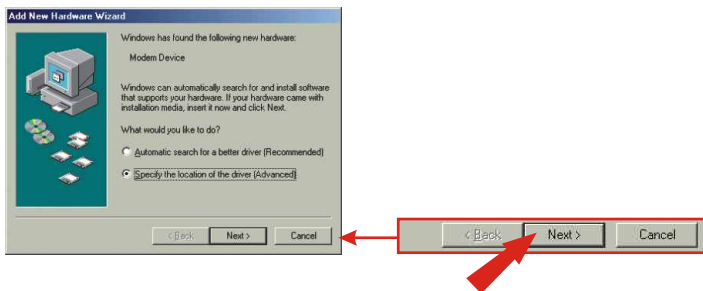
3. Click **Next**.



4. Click **Finish**.



## 5. Repeat steps 1-4.



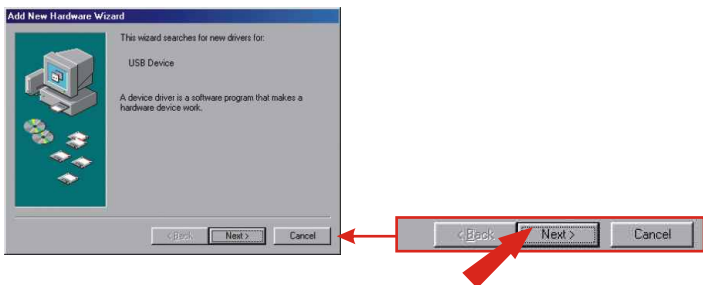
**Congratulations!**  
Installation is now complete.

**Note:** If you would like to verify that the TFM-560U has been installed properly for your windows, go to the Verify Installation section.

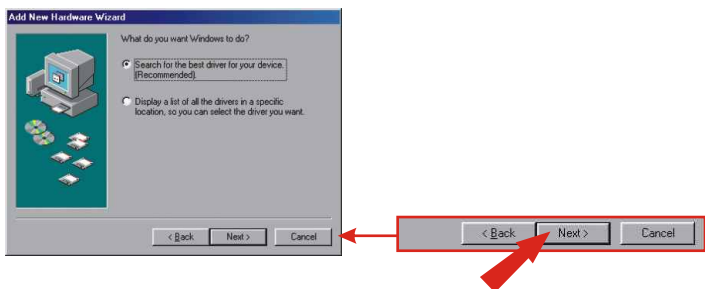
## Windows 98SE

After completing the modem hardware installation, the Add New Hardware Wizard will appear. Please insert the CD-ROM driver into your CD-ROM.

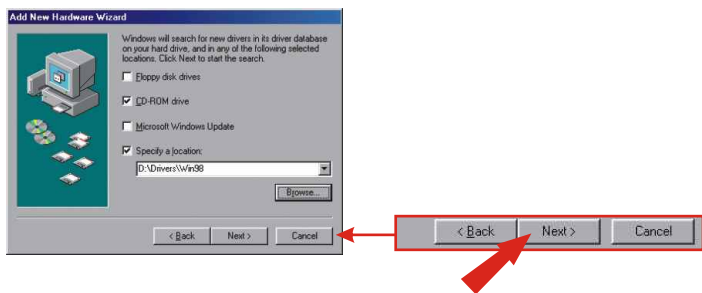
### 1. Click **Next**.



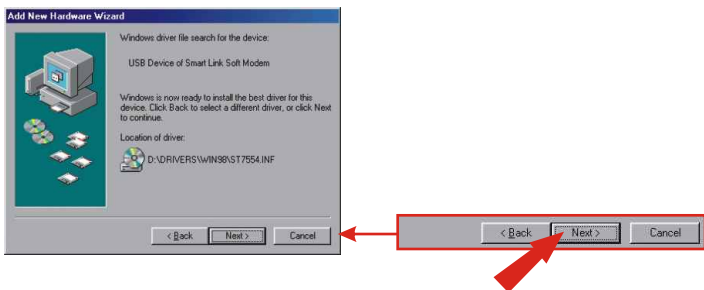
2. Click **Search for the best driver for your device. (Recommended)**. Click **Next**.



3. Click **CD-ROM drive**, and Click **Specify a location**: Type **D:\Drivers\Win98** in the text box. If your CD-ROM uses a different letter than **E**, then use a different letter (i.e. **D:\Drivers\Win98**). Click **Next**.

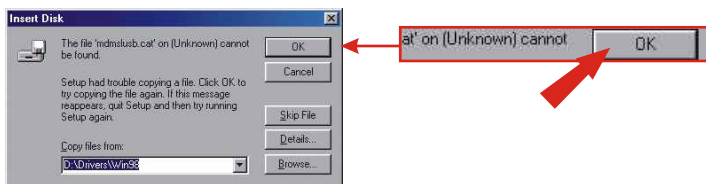


#### 4. Click Next.



#### 5. Click Finish.

#### 6. Make sure D:\Drivers\Win98 is written in the text box. Click OK.



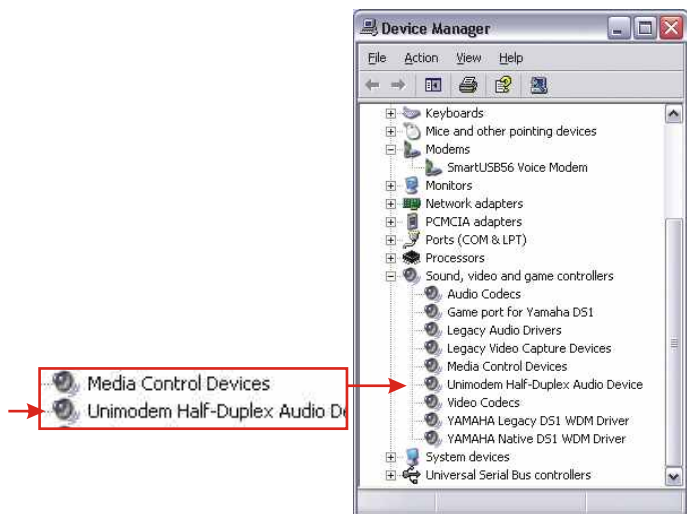
**Congratulations!**  
Installation is now complete.

**Note:** If you would like to verify that the TFM-560U has been installed properly for your windows, go to the Verify Installation section.

# 5. Verify Installation

## Windows XP

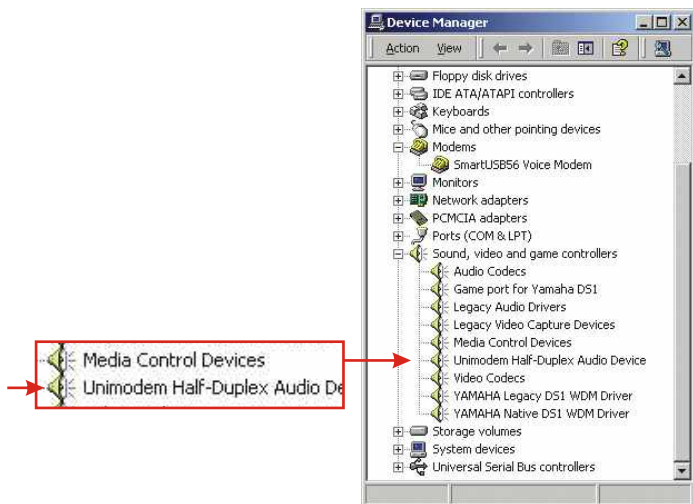
1. Click **Start**, and then click **Control Panel**.
2. Double-click the **System** icon. On the **Hardware** tab, click **Device Manager** button.
3. Expand the “Modems” heading to verify that the **SmartUSB56 Voice Modem** has been installed.
4. Expand the “Sound, video and game controllers” heading to verify that the **Unimodem Half-Duplex Audio Device** has been installed.





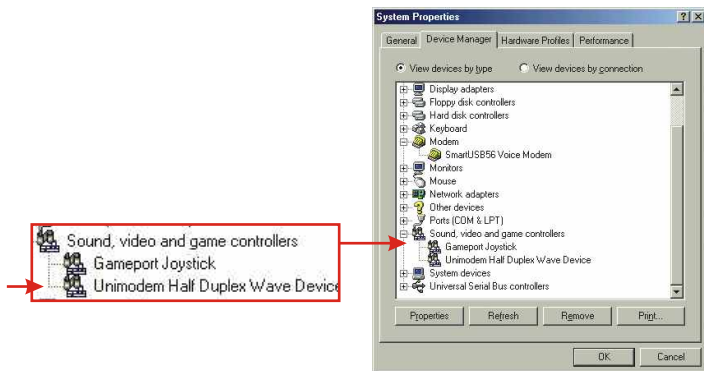
## Windows 2000

1. Click **Start**, highlight **Settings**, and then click on **Control Panel**.
2. Double-click the **System** icon. On the **Hardware** tab, click **Device Manager** button.
3. Expand the “Modems” heading to verify that the **SmartUSB56 Voice Modem** has been installed.
4. Expand the “Sound, video and game controllers” heading to verify that the **Unimodem Half Duplex Wave Device** has been installed.



## Windows ME/98SE

1. Click **Start**, highlight **Settings**, and then click on **Control Panel**.
2. Double-click the **System** icon, and click **Device Manager** tab.
3. Expand the “Modems” heading to verify that the **SmartUSB56 Voice Modem** has been installed.
4. Expand the “Sound, video and game controllers” heading to verify that the **Unimodem Half Duplex Wave Device** has been installed.



# Troubleshooting

**Q1. After I physically put in the modem, the computer does not detect the modem?**

**A1.** Make sure the computer meets the minimum system requirements as shown at the beginning of this quick installation guide. Also try putting the modem into a different USB slot.

**Q2. After successful installation of the TFM-560U 56K (V.90) High Speed USB Fax Modem, I try to connect to the internet but I get no dial tone. What should I do?**

**A2.**

1. Ensure that the telephone cord is securely connected at both modem and wall outlet.
2. Unplug the telephone cord from the computer and connect it directly to a telephone from the wall outlet. Check for a dial tone. If there is none, the problem is in the telephone cord or system. Call your telephone service provider.
3. Double-check your country setting. Different country setting will cause different modem performance. Please select the correct country as you located.
4. Check modem performance with a direct line from your telephone company. Some PBXs may cause the telephone line condition change and affect modem performance.

If you have any questions regarding the TFM-560U 56K (V.90) High Speed USB FAX Modem, please contact Trendware Technical Support Department.

## **Contact Technical Support   Technical Support Hours**

Telephone: +1-310-626-6252

7:00AM ~ 6:00PM, Monday through Friday

Fax: +1-310-626-6267

Pacific Standard Time (except holidays)

Website: [www.TRENDNET.com](http://www.TRENDNET.com)

## **Certifications**

This equipment has been tested and found to comply with FCC and CE Rules.

Operation is subject to the following two conditions:

- (1) This device may not cause harmful interference.
- (2) This device must accept any interference received.  
Including interference that may cause undesired operation.





TRENDware, USA

**What's Next in Networking**

## **Product Warranty Registration**

Please take a moment to register your product online.  
Go to TRENDware's website at <http://www.TRENDNET.com>

**TRENDware International, Inc.**  
3135 Kashiwa Street  
Torrance, CA 90505

**<http://www.TRENDNET.com>**