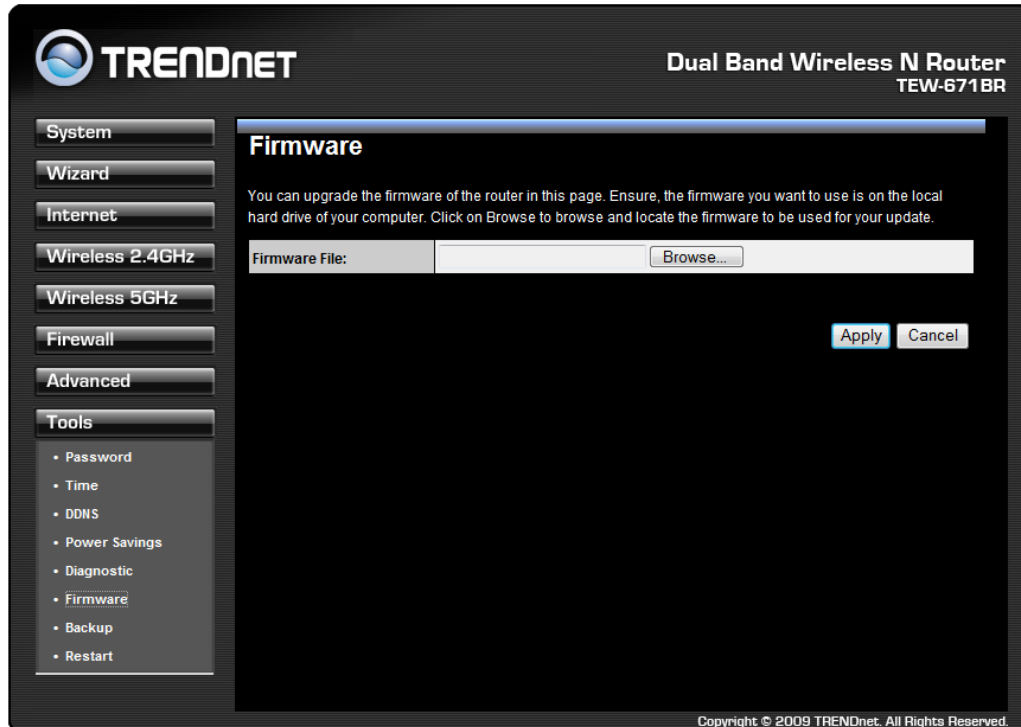


## TEW-671BR Firmware Upgrade Procedures

1. Save the downloaded firmware file to your PC
2. Right click on the downloaded file and select **Extract All** or **Extract Here** option
  - a. Make sure to remember the location where the extracted file will be saved.
3. Log into to the router's configuration page (default IP is 192.168.10.1)
4. Click on the **Tools** button on the left panel and select **Firmware** option.



5. Click on **Browse** button on Firmware page and find the unzipped folder you had just extracted. Select Kernel file (TEW-671BR-APPS-xxxxxxx.dlf) and click **Apply**.
6. Router will start to load the kernel file, please make sure that this is completed before you continue.
7. After it's complete, click on **Browse** button on Firmware page and find the unzipped folder you had just extracted. Now find and select the APPS file (TEW-671BR-KNL-xxxxxxx.dlf) and click **Apply**.
8. Router will start to load the new firmware and restart.
9. Firmware upgrade complete.