



TRENDNET®



User's Guide

TEW-664UB
H/W: V1

Federal Communication Commission Interference Statement

This equipment has been tested and found to comply with the limits for a Class B digital device, pursuant to Part 15 of the FCC Rules. These limits are designed to provide reasonable protection against harmful interference in a residential installation. This equipment generates, uses and can radiate radio frequency energy and, if not installed and used in accordance with the instructions, may cause harmful interference to radio communications. However, there is no guarantee that interference will not occur in a particular installation. If this equipment does cause harmful interference to radio or television reception, which can be determined by turning the equipment off and on, the user is encouraged to try to correct the interference by one of the following measures:

- Reorient or relocate the receiving antenna.
- Increase the separation between the equipment and receiver.
- Connect the equipment into an outlet on a circuit different from that to which the receiver is connected.
- Consult the dealer or an experienced radio/TV technician for help.

FCC Caution: Any changes or modifications not expressly approved by the party responsible for compliance could void the user's authority to operate this equipment.

For operation within 5.15 ~ 5.25GHz frequency range, it is restricted to indoor environment.

This device complies with Part 15 of the FCC Rules. Operation is subject to the following two conditions: (1) This device may not cause harmful interference, and (2) this device must accept any interference received, including interference that may cause undesired operation.

IMPORTANT NOTE:

Radiation Exposure Statement:

This equipment complies with FCC radiation exposure limits set forth for an uncontrolled environment. End users must follow the specific operating instructions for satisfying RF exposure compliance. To maintain compliance with FCC RF exposure compliance requirements, please follow operation instruction as documented in this manual.

This transmitter must not be co-located or operating in conjunction with any other antenna or transmitter.

SAR compliance has been established in typical laptop computer(s) with USB slot, and product could be used in typical laptop computer with USB slot. Other application like handheld PC or similar device has not been verified and may not compliance with related RF exposure rule and such use shall be prohibited.

The availability of some specific channels and/or operational frequency bands are country dependent and are firmware programmed at the factory to match the intended destination. The firmware setting is not accessible by the end user.

Europe – EU Declaration of Conformity

This device complies with the essential requirements of the R&TTE Directive 1999/5/EC. The following test methods have been applied in order to prove presumption of conformity with the essential requirements of the R&TTE Directive 1999/5/EC:

EN 60950-1: 2006

Safety of Information Technology Equipment

EN 50392: (2004-01)

Generic standard to demonstrate the compliance of electronic and electrical apparatus with the basic restrictions related to human exposure to electromagnetic fields (0 Hz - 300 GHz)

EN 300 328 V1.7.1: (2006-10)

Electromagnetic compatibility and Radio spectrum Matters (ERM); Wideband Transmission systems; Data transmission equipment operating in the 2,4 GHz ISM band and using spread spectrum modulation techniques; Harmonized EN covering essential requirements under article 3.2 of the R&TTE Directive

EN 301 893 V1.3.1: (2005-08)

Broadband Radio Access Networks (BRAN); 5 GHz high performance RLAN; Harmonized EN covering essential requirements of article 3.2 of the R&TTE Directive

EN 301 489-1 V1.6.1: (2005-09)

Electromagnetic compatibility and Radio Spectrum Matters (ERM); ElectroMagnetic Compatibility (EMC) standard for radio equipment and services; Part 1: Common technical requirements

EN 301 489-17 V1.2.1 (2002-08)

Electromagnetic compatibility and Radio spectrum Matters (ERM); ElectroMagnetic Compatibility (EMC) standard for radio equipment and services; Part 17: Specific conditions for 2,4 GHz wideband transmission systems and 5 GHz high performance RLAN equipment

This device is a 2.4 GHz wideband transmission system (transceiver), intended for use in all EU member states and EFTA countries, except in France and Italy where restrictive use applies.

In Italy the end-user should apply for a license at the national spectrum authorities in order to obtain authorization to use the device for setting up outdoor radio links and/or for supplying public access to telecommunications and/or network services.

This device may not be used for setting up outdoor radio links in France and in some areas the RF output power may be limited to 10 mW EIRP in the frequency range of 2454 – 2483.5 MHz. For detailed information the end-user should contact the national spectrum authority in France.



Česky [Czech]	<i>TRENDnet</i> tímto prohlašuje, že tento <i>TEW-664UB</i> je ve shodě se základními požadavky a dalšími příslušnými ustanoveními směrnice 1999/5/ES.
Dansk [Danish]	Undertegnede <i>TRENDnet</i> erklærer herved, at følgende udstyr <i>TEW-664UB</i> overholder de væsentlige krav og øvrige relevante krav i direktiv 1999/5/EF.
Deutsch [German]	Hiermit erklärt <i>TRENDnet</i> , dass sich das Gerät <i>TEW-664UB</i> in Übereinstimmung mit den grundlegenden Anforderungen und den übrigen einschlägigen Bestimmungen der Richtlinie 1999/5/EG befindet.
Eesti [Estonian]	Käesolevaga kinnitab <i>TRENDnet</i> seadme <i>TEW-664UB</i> vastavust direktiivi 1999/5/EÜ põhinõuetele ja nimetatud direktiivist tulenevatele teistele asjakohastele sätetele.
English	Hereby, <i>TRENDnet</i> , declares that this <i>TEW-664UB</i> is in compliance with the essential requirements and other relevant provisions of Directive 1999/5/EC.
Español [Spanish]	Por medio de la presente <i>TRENDnet</i> declara que el <i>TEW-664UB</i> cumple con los requisitos esenciales y cualesquiera otras disposiciones aplicables o exigibles de la Directiva 1999/5/CE.
Ελληνική [Greek]	ΜΕ ΤΗΝ ΠΑΡΟΥΣΑ <i>TRENDnet</i> ΔΗΛΩΝΕΙ ΟΤΙ <i>TEW-664UB</i> ΣΥΜΜΟΡΦΩΝΕΤΑΙ ΠΡΟΣ ΤΙΣ ΟΥΣΙΩΔΕΙΣ ΑΠΑΙΤΗΣΕΙΣ ΚΑΙ ΤΙΣ ΛΟΙΠΕΣ ΣΧΕΤΙΚΕΣ ΔΙΑΤΑΞΕΙΣ ΤΗΣ ΟΔΗΓΙΑΣ 1999/5/ΕΚ.
Français [French]	Par la présente <i>TRENDnet</i> déclare que l'appareil <i>TEW-664UB</i> est conforme aux exigences essentielles et aux autres dispositions pertinentes de la directive 1999/5/CE.

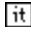
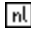


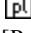
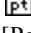
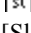

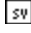
 Italiano [Italian]	Con la presente <i>TRENDnet</i> dichiara che questo <i>TEW-664UB</i> è conforme ai requisiti essenziali ed alle altre disposizioni pertinenti stabilite dalla direttiva 1999/5/CE.
Latviski [Latvian]	Ar šo <i>TRENDnet</i> deklarē, ka <i>TEW-664UB</i> atbilst Direktīvas 1999/5/EK būtiskajām prasībām un citiem ar to saistītajiem noteikumiem.
Lietuvių [Lithuanian]	Šiuo <i>TRENDnet</i> deklaruoja, kad šis <i>TEW-664UB</i> atitinka esminius reikalavimus ir kitas 1999/5/EB Direktyvos nuostatas.
 Nederlands [Dutch]	Hierbij verklaart <i>TRENDnet</i> dat het toestel <i>TEW-664UB</i> in overeenstemming is met de essentiële eisen en de andere relevante bepalingen van richtlijn 1999/5/EG.
 Malti [Maltese]	Hawnhekk, <i>TRENDnet</i> , jiddikjara li dan <i>TEW-664UB</i> jikkonforma mal-htigijiet essenzjali u ma provvedimenti oħrajn rilevanti li hemm fid-Dirrettiva 1999/5/EC.
 Magyar [Hungarian]	Alulírott, <i>TRENDnet</i> nyilatkozom, hogy a <i>TEW-664UB</i> megfelel a vonatkozó alapvető követelményeknek és az 1999/5/EC irányelv egyéb előírásainak.
 Polski [Polish]	Niniejszym <i>TRENDnet</i> oświadcza, że <i>TEW-664UB</i> jest zgodny z zasadniczymi wymogami oraz pozostałymi stosownymi postanowieniami Dyrektywy 1999/5/EC.
 Português [Portuguese]	<i>TRENDnet</i> declara que este <i>TEW-664UB</i> está conforme com os requisitos essenciais e outras disposições da Directiva 1999/5/CE.
 Slovensko [Slovenian]	<i>TRENDnet</i> izjavlja, da je ta <i>TEW-664UB</i> v skladu z bistvenimi zahtevami in ostalimi relevantnimi določili direktive 1999/5/ES.
Slovensky [Slovak]	<i>TRENDnet</i> týmto vyhlasuje, že <i>TEW-664UB</i> spĺňa základné požiadavky a všetky príslušné ustanovenia Smernice 1999/5/ES.
 Suomi [Finnish]	<i>TRENDnet</i> vakuuttaa täten että <i>TEW-664UB</i> tyyppinen laite on direktiivin 1999/5/EY oleellisten vaatimusten ja sitä koskevien direktiivin muiden ehtojen mukainen.
 Svenska [Swedish]	Härmed intygar <i>TRENDnet</i> att denna <i>TEW-664UB</i> står i överensstämmelse med de väsentliga egenskapskrav och övriga relevanta bestämmelser som framgår av direktiv 1999/5/EG.

TABLE OF CONTENT

Introduction	1
Overview of this User's Guide	1
Unpacking and Setup.....	2
Unpacking	2
Setup.....	2
Identifying external components	3
LED	3
Check the installation	3
Software Installation.....	4
Windows Based Utility Installation.....	4
Wireless Utility Setting	6
Link Information	6
Configuration.....	7
Site Survey	10
Profile	11
WPS.....	12
About.....	16
Technical Specifications.....	17

INTRODUCTION

Congratulations on your purchase of this TEW-664UB.

This manual contains detailed instructions regarding the operation of this product. Please keep this manual for future reference.

With the TEW-664UB, a desktop or laptop computer can communicate with another computer wirelessly. An easy-to-use utility is bundled with the Wireless USB Adapter for configuration, monitoring, and diagnostic purposes.

The TEW-664UB can wirelessly transmit and receive data, at a speed of up to 300 megabits per second.

The TEW-664UB provides users with access to real-time information anywhere in their organization. The mobility of the TEW-664UB provides productivity and service, which are not available under wired networks. The TEW-664UB can easily adapt from peer-to-peer networks, suitable for a small number of users, to full infrastructure networks of thousands of users that allow roaming around a broad area.

Overview of this User's Guide

Introduction. Describes the TEW-664UB and its features.

Unpacking and Setup. Helps you get started with the basic installation of the TEW-664UB.

Hardware Installation. Describes the LED indicator on the Adapter.

Software Installation. Describes how to setup the driver and the utility setting.

Technical Specifications. Lists the technical (general, physical and environmental) specifications of the TEW-664UB.

UNPACKING AND SETUP

This section provides unpacking and setup information for the TEW-664UB.

Unpacking

The box should contain the following items:

- ◆ One the IEEE 802.11a/b/g/n 2.4GHz/5GHz Dual-Band Wireless LAN USB Adapter
- ◆ One Driver & Utility CD-ROM

If any item is found missing or damaged, please contact your local reseller for replacement.

Setup

Before installation, check the following:

- ◆ Make sure your computer is running at least a 300MHz or above processor with 256MB RAM or above
- ◆ Make sure the USB port is USB 2.0 port
- ◆ The operating system on your computer must be the following: Windows 2000 (Service Pack 4), XP (Service Pack 2), Windows Vista
- ◆ An 802.11n or 802.11a/b/g access point.
- ◆ Make sure the environment has minimal interference and obstructions.

IDENTIFYING EXTERNAL COMPONENTS

LED

When the LED is blinking, the WLAN Adapter is transmitting or receiving data on the Wireless Ethernet network.

Check the installation

The LED of the TEW-664UB is clearly visible and the status of the network link can be seen instantly:

1. When connected to the USB port and the driver were installed, the LINK LED will start blinking, and it means that the device is starting to scan a wireless device near the TEW-664UB.
2. While the TEW-664UB linked up to the Access Point or to other Wireless LAN station, the LINK LED will always light up.

SOFTWARE INSTALLATION

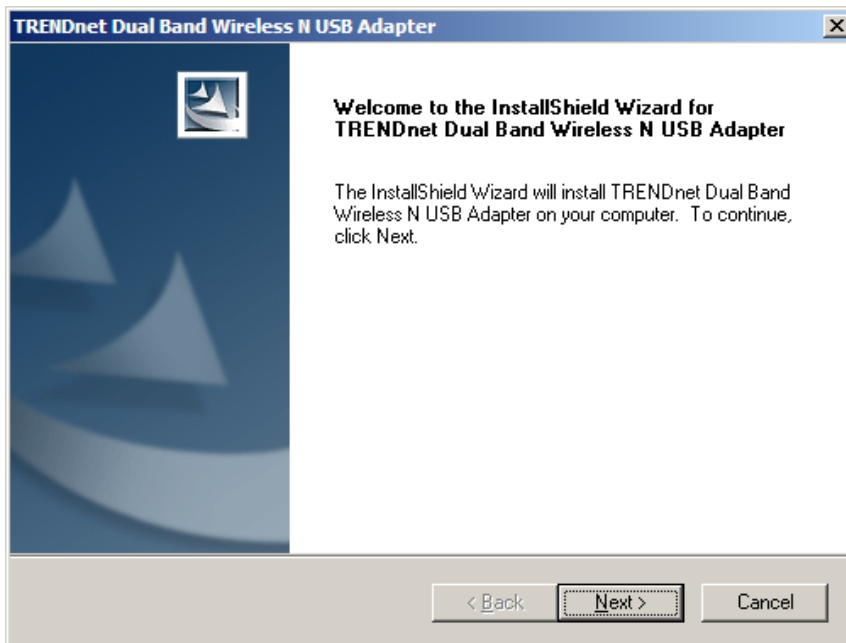
This section describes how to install the driver and utility for the TEW-664UB.

Windows Based Utility Installation

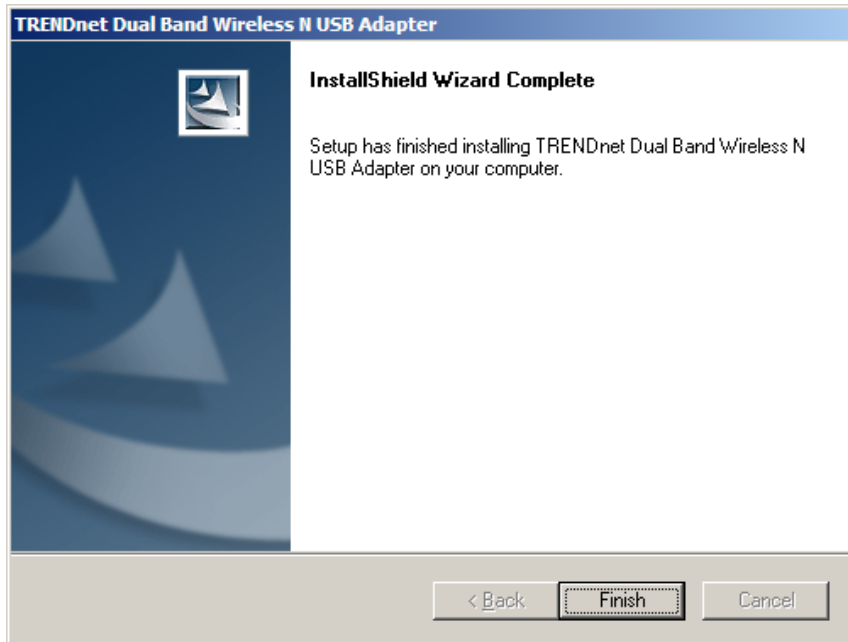
- 1) Insert the Utility and Driver CD-ROM into your computer's CD-ROM Drive and then clicks **Install Utility & Driver** option.



- 2) Follow the Installation Wizard Instructions



- 3) After you reach this screen, click **Finish** to complete the utility installation.
Restart your computer.



- 4) After your computer is rebooted, plug in the TEW-664UB into an available USB slot on your computer.

WIRELESS UTILITY SETTING

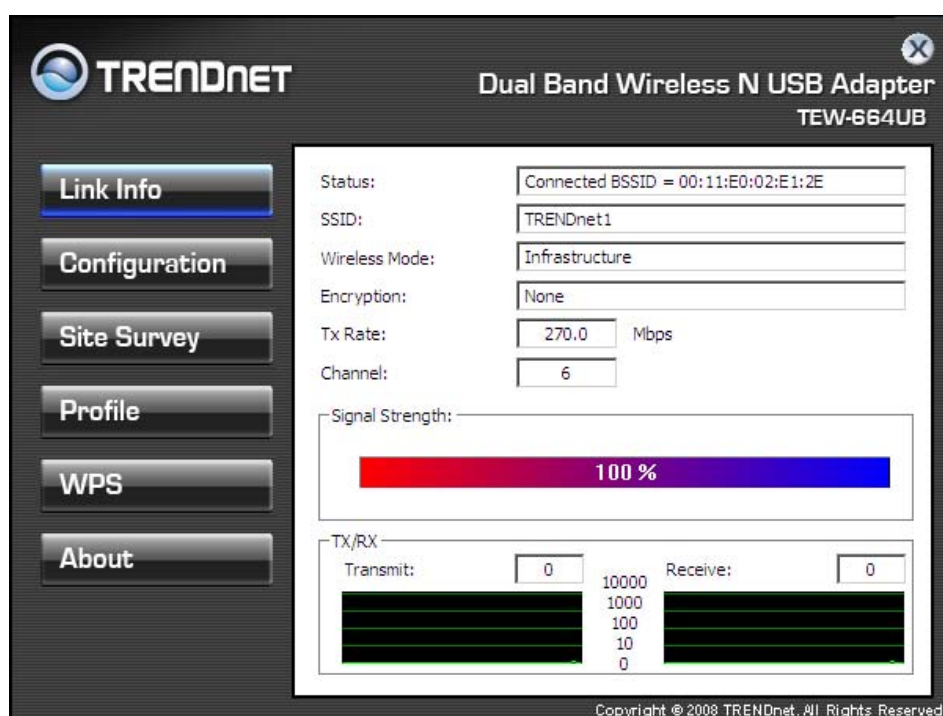
You can start to configure the wireless settings using the Wireless Adapter Configuration Utility. Double-click the utility icon that appears in the taskbar.



The Wireless Adapter Configuration Utility is divided into six sections: Link Info, Configuration, Site Survey, Profile, WPS and About.

Link Information

This is the default screen after launching the Utility program.



Status: Shows the associated BSSID, which can be used to identify the wireless access point.

SSID: Shows the current SSID, which must be the same on the wireless client and AP in order for communication to be established.

Frequency: Shows the current frequency used for the wireless network.

Wireless Mode: Shows the current wireless mode used for wireless communication.

Encryption: Shows the current encryption mode used on the wireless network.

TxRate: Shows the current data rate used for transmitting.

Channel: Shows the current channel for communication.

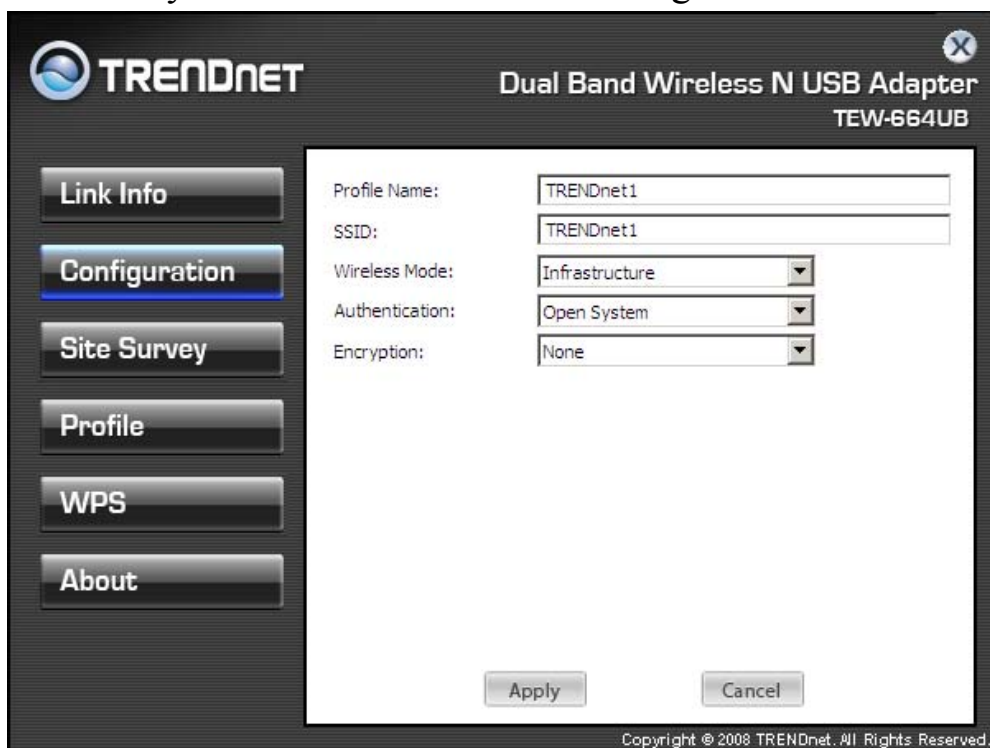
Link Quality: Shows the link quality of the TEW-664UB with an access point or a wireless router when operating under Infrastructure mode.

Signal Strength: Shows the wireless signal strength of the connection between the TEW-664UB and a wireless router or an access point.

Data Rate: Shows the statistics of data transfer, and the calculation is based on the number of packets transmitted and received.

Configuration

This screen is where you set the basic wireless settings for the TEW-664UB.



Profile Name: You can create a profile name for the current wireless network connection. For different wireless network, set different profiles for quick connection uses.

SSID: Service Set Identifier, which is a unique name shared among all clients in a wireless network. The SSID must be identical with your wireless router or access point's SSID settings.

Wireless Mode: There are two modes available for selection

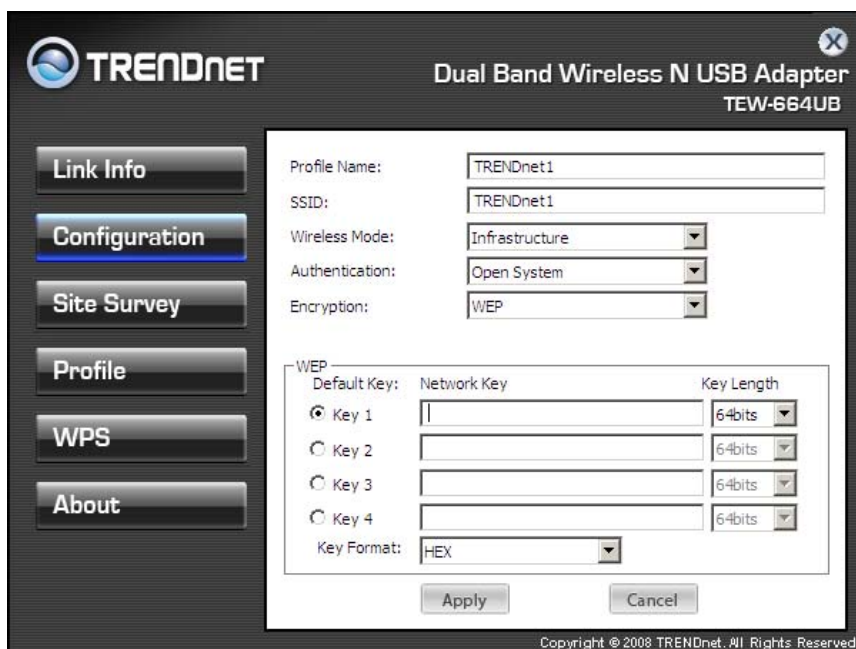
- Infrastructure – to establish wireless communication with the LAN and other wireless clients through the use of Access Points.
- Ad-Hoc – to establish point-to-point wireless communication directly with other wireless client devices.

Authentication: The following options are available: Open System, Shared Key, WPA-PSK, WPA2-PSK, WPA EAP-TLS, WPA2 EPA-TLS . Select Open System, Shared Key for WEP data encryption feature.

Open or Shared Key

Open System and **Shared Key** require the user to set a WEP key to exchange data with other wireless clients that have the same WEP key.

- Default Key: select one of the 4 keys to use.
- Network Key: choose the encryption way, either in HEX or ASCII formats, and enter the password in the blank space.
- Key Length: select 64 or 128 bits as the length of the keys
Key Format: HEX or ASCII



Key Length	Hex	ASCII
64-bit	10 characters	5 characters
128-bit	26 characters	13 characters

WPA-PSK / WPA2-PSK

If using the **WPA-PSK/WPA2-PSK** authentication method, please select the **Encryption** type for TKIP or AES then enter the Passphrase key. The minimum length is 8 characters.

The screenshot shows the configuration window for a Dual Band Wireless N USB Adapter (TEW-664UB). The interface includes a sidebar with navigation buttons: Link Info, Configuration (highlighted), Site Survey, Profile, WPS, and About. The main configuration area contains the following fields:

- Profile Name:
- SSID:
- Wireless Mode:
- Authentication:
- Encryption:

Below these fields is a section titled "WPA-PSK" with the instruction: "Enter your WPA Passphrase. The minimum length is 8 characters." This section contains an empty text input field. At the bottom of the configuration area are "Apply" and "Cancel" buttons. The footer of the window reads "Copyright © 2008 TRENDnet. All Rights Reserved."

WPA EAP-TLS

If using the **WPA/WPA2 EAP-TLS** authentication method, please select the **Encryption** type for TKIP or AES then select the **WPA/WPA2 Certificate** from drop down list.

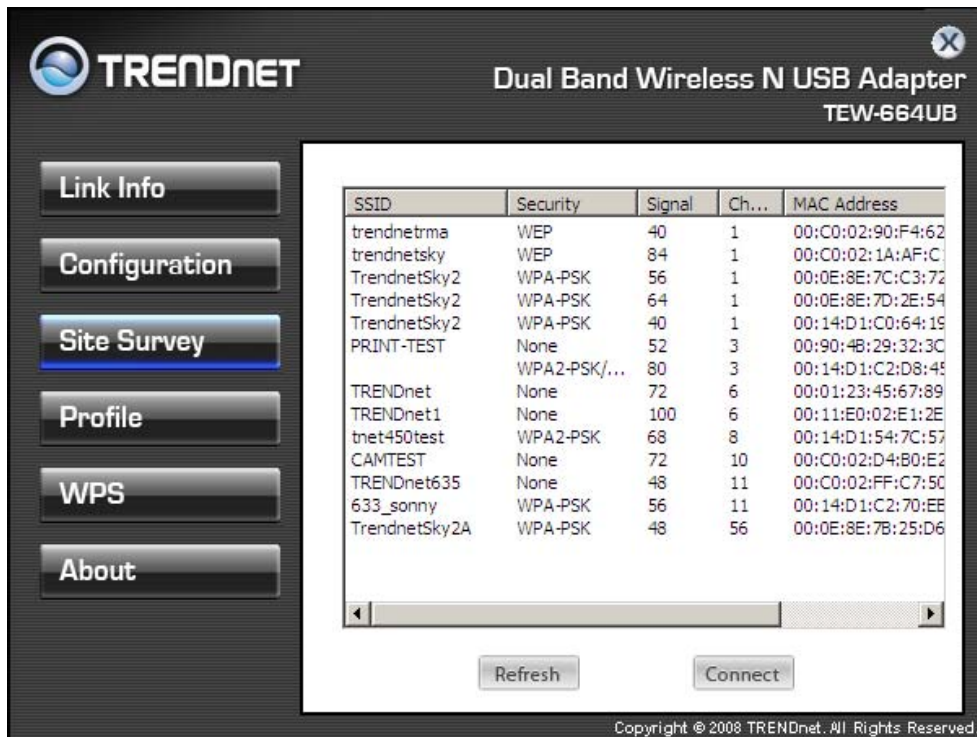
The screenshot shows the configuration window for a Dual Band Wireless N USB Adapter (TEW-664UB). The interface includes a sidebar with navigation buttons: Link Info, Configuration (highlighted), Site Survey, Profile, WPS, and About. The main configuration area contains the following fields:

- Profile Name:
- SSID:
- Wireless Mode:
- Authentication:
- Encryption:

Below these fields is a section titled "WPA" with the instruction: "Select a Certificate:". This section contains a dropdown menu. At the bottom of the configuration area are "Apply" and "Cancel" buttons. The footer of the window reads "Copyright © 2008 TRENDnet. All Rights Reserved."

Site Survey

This screen allows the user to scan for available wireless networks (wireless clients and Access Points). It also allows the user to establish wireless communications with an available wireless network.



Available Network – displays the wireless networks (wireless clients and access points) that are within range.

Select any one of the wireless networks by **double-clicking** on it or select the ideal wireless SSID then click on the “**Connect**” button.

Click the “**Refresh**” button to rescan available networks.

Profile

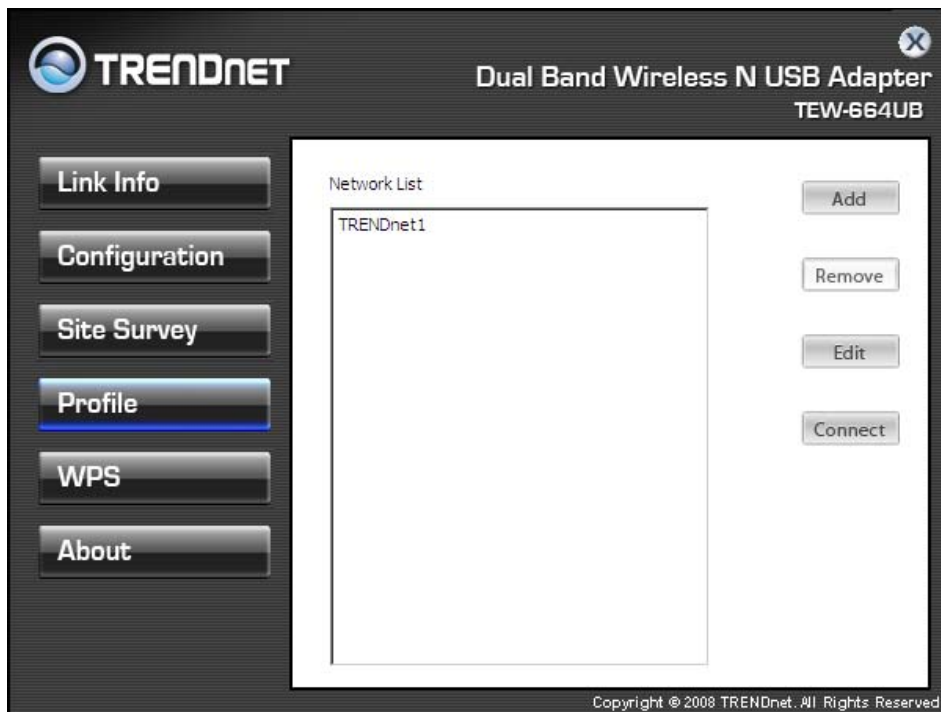
Profile – The user can create and manage the created profiles for home, work or public areas. By double-clicking on one of the created profile, the setting will adjust to the specific setting such as SSID, channel, and encryption as saved by that particular profile.

Add: Adds a profile. The following screen will appear. The user can enter the necessary information required for accessing Access Points or Wireless Router

Remove: Deletes the selected profile

Edit: Edit an exist profile. The screen will back to profile. Edit the SSID and select the Wireless Mode, Authentication and Encryption then click *Apply* to save the profile. When the Profile name was changed, a new profile will be added in the list.

Connect: Selected a profile from list then click the *Connect* to connecting to the wireless network with the profile setting.



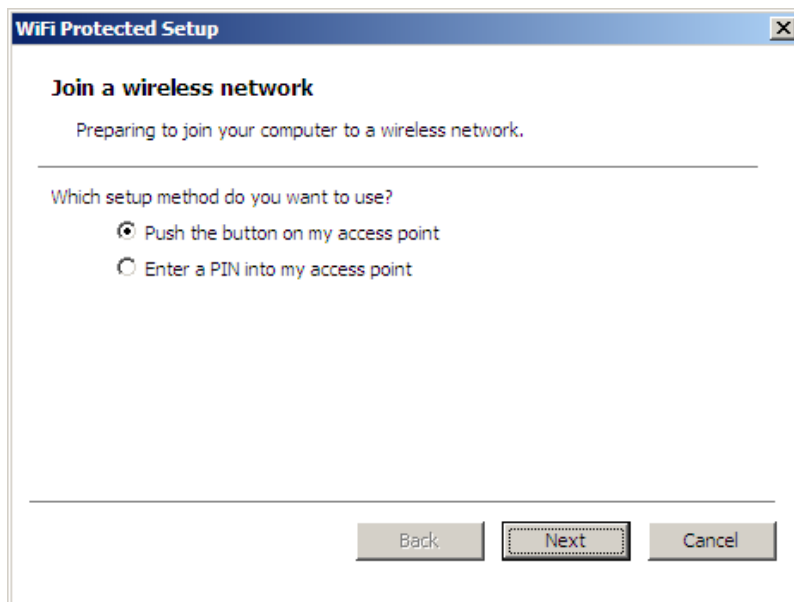
WPS

WiFi Protected Setup (WPS) is an optional certification program from the Wi-Fi Alliance that is designed to ease the task of setting up and configuring security on a wireless network. There are two methods used in the WPS as below instruction.

Push Button Connect (PBC)

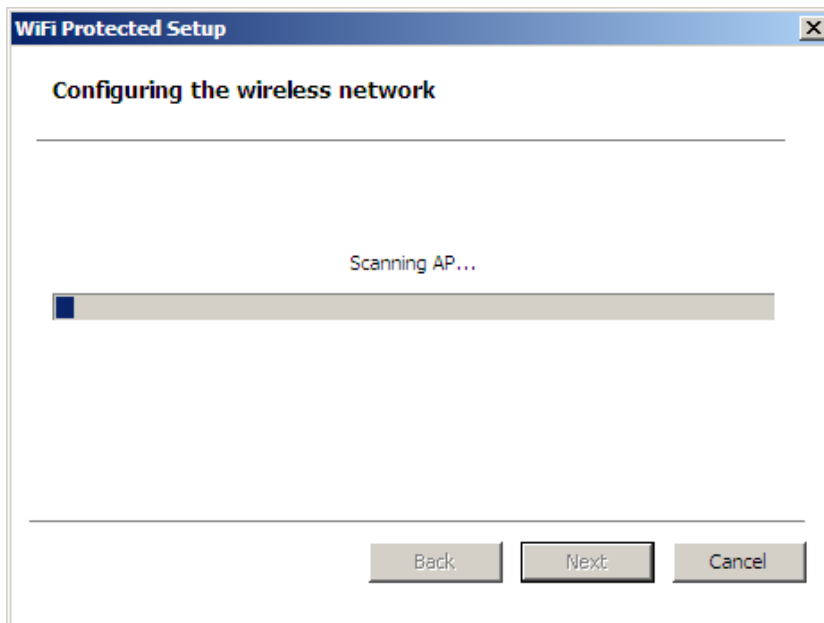
Using the WPS configuration with the PBC method, the configuration steps as below:

1) Selected the “Push the button on my access point”.

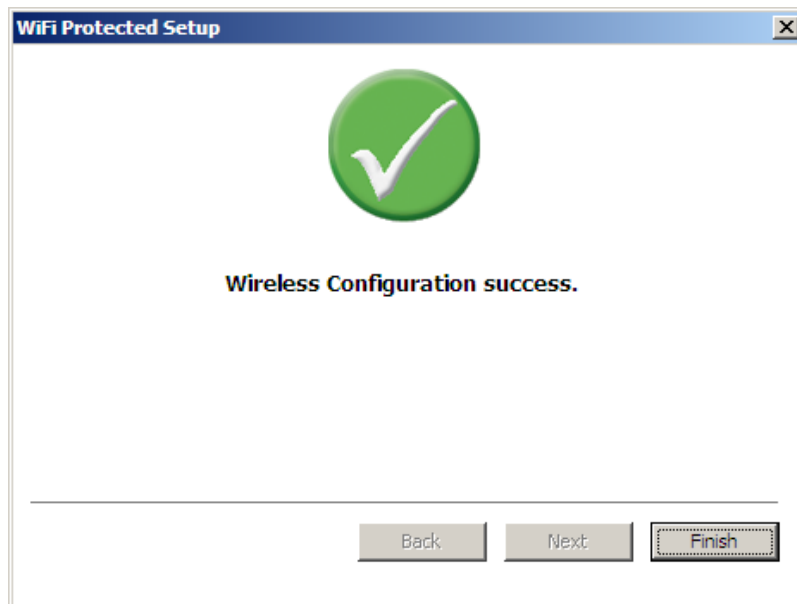


2) Push the WPS configuration button on your wireless access point or router.

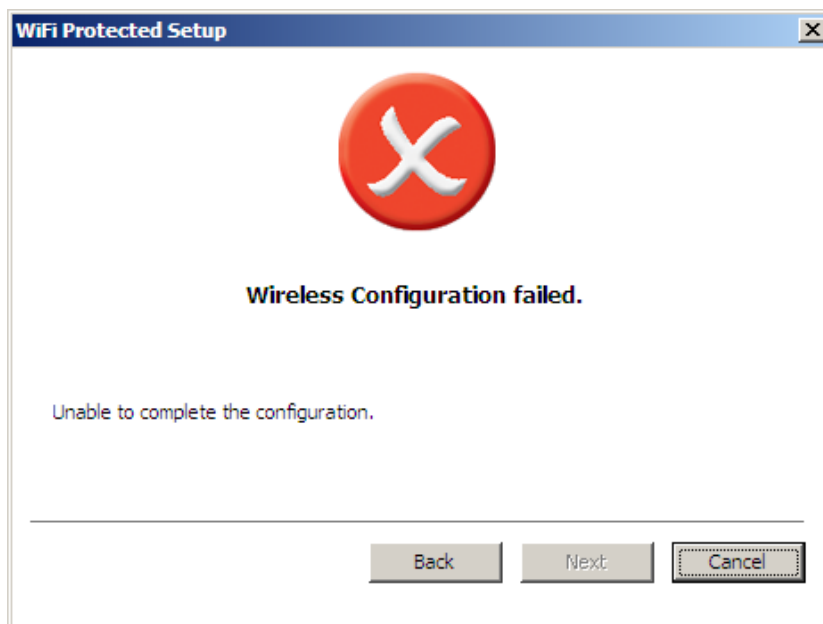
3) Click the *Next* button start the WPS configuration.



4) If the WPS configuration was successful, the follow window will show on.



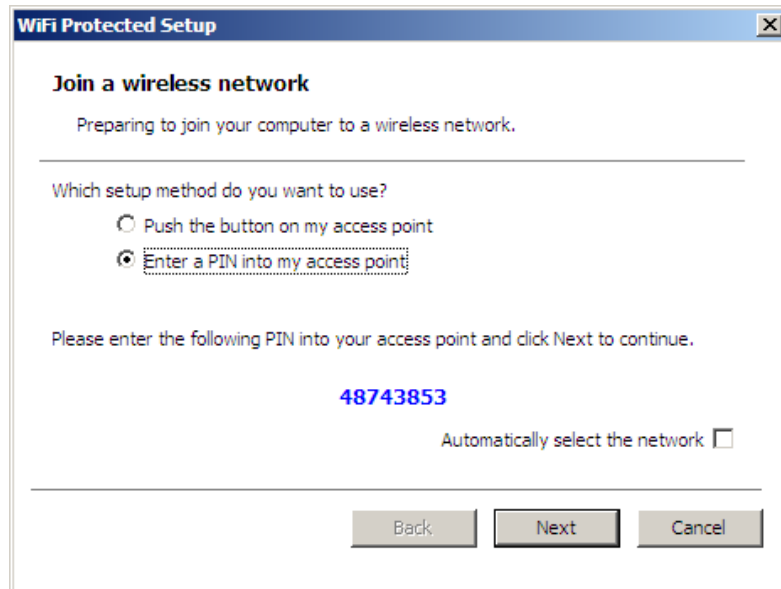
5) If the WPS configuration was failed, the follow window will show on.



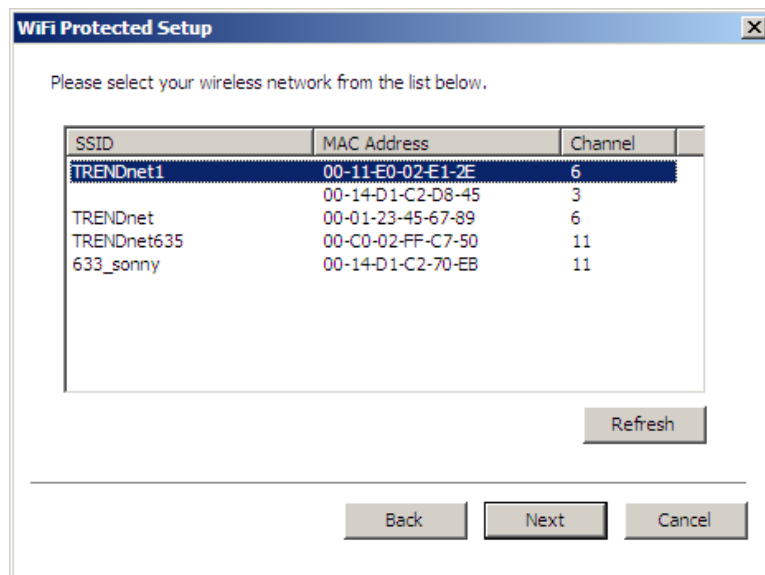
Enter a PIN into my access point

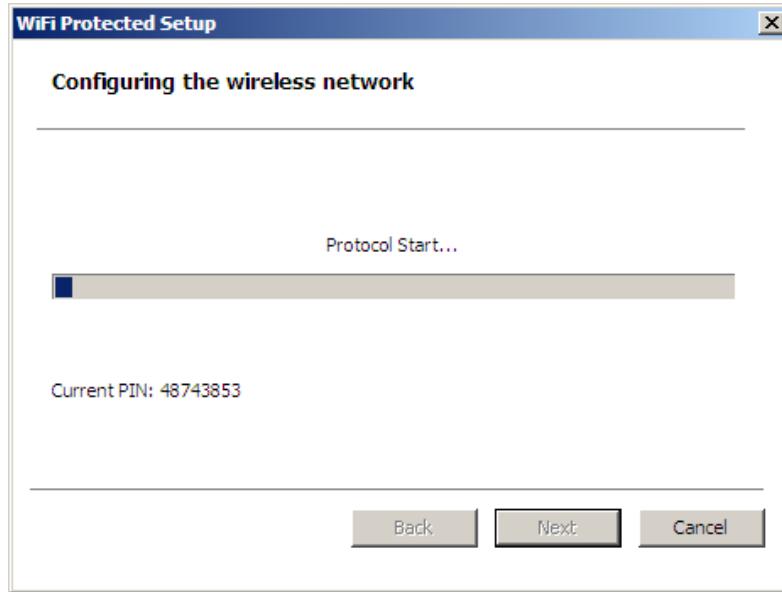
Using the WPS configuration with the PIN method, the configuration steps as below:

- 1) Selected the “Enter a PIN into my access point”, the PIN will be show on the button of the windows.

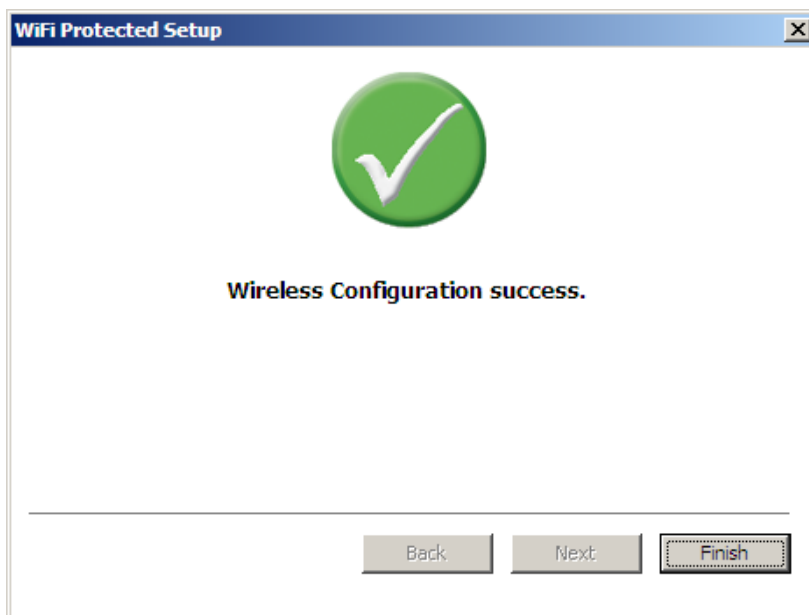


- 2) Enter the PIN code from the adapter into the WPS “Clint PIN number” of you wireless access point or router then press/choose the apply option, the wireless access point or router will start the WPS configuration process.
- 3) Selected a wireless access point or router which one will be connecting then click the *Next* button start the WPS connection. If the “Automatically select the network” was checked, the setup step will be skip.

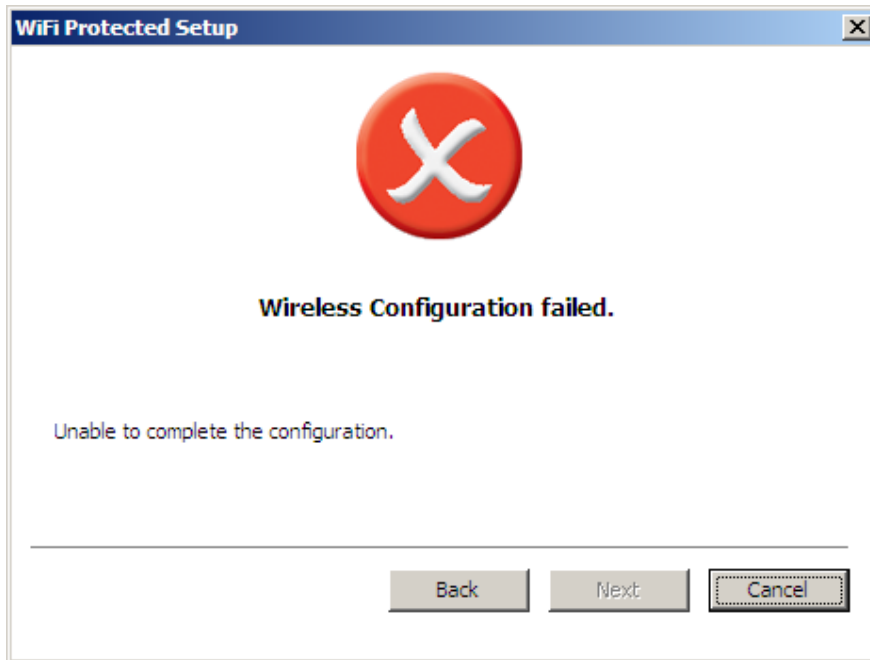




4) If the WPS configuration was successful, the follow window will show on.

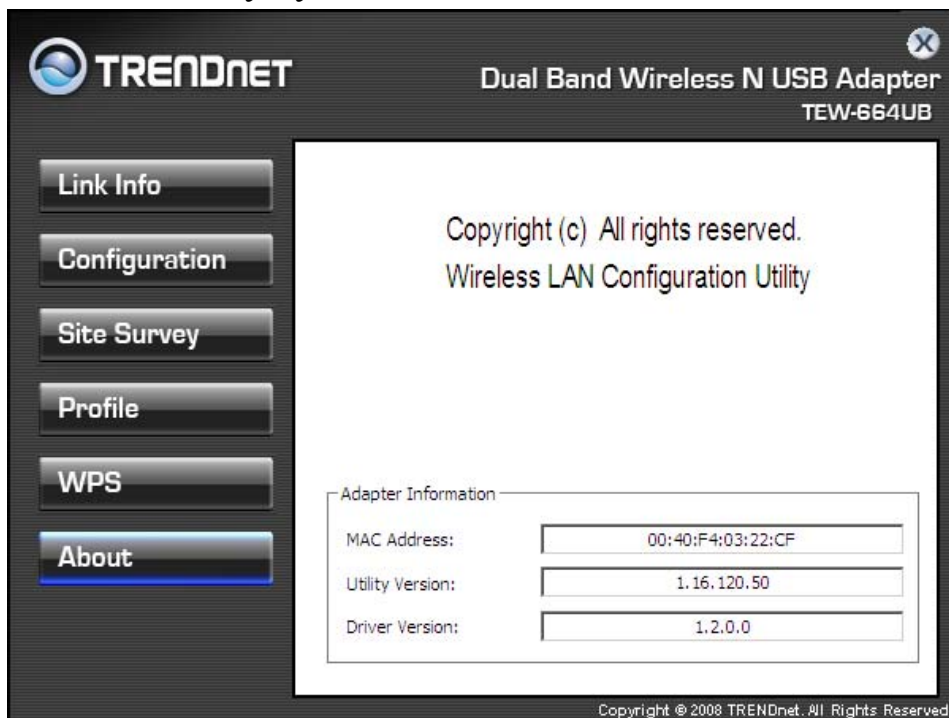


5) If the WPS configuration was failed, the follow window will show on.



About

This screen displays information about the TEW-664UB, such as the Driver and Utility version. When a new version of the utility becomes available for upgrade, users will be able to identify by version numbers.



TECHNICAL SPECIFICATIONS

Hardware	
Interface	USB 2.0 Compliant
Standards	IEEE 802.11n draft v2.0, IEEE 802.11a, IEEE 802.11b and IEEE 802.11g
Antenna	Internal two high performance Antenna
LED Indicator	Activity
Supported OS	Windows 2000, XP, Vista, MAC OS X 10.3, 10.4, 10.5
Dimensions (LxWxH)	86.5 x 30 x 13 mm
Temperature	Operating: 0° ~ 40° C (32° ~ 104° F) Storage: -10° ~ 70° C (14° ~ 158° F)
Humidity	10% ~ 95% max (Non-condensing)
Certification	FCC Part 15.247 for US, ETS 300, 328 for Europe
Wireless	
Module Technique	IEEE 802.11 a/g/n: OFDM (BPSK, QPSK, 16QAM, 64QAM) IEEE 802.11b: DSSS (DBPSK, DQPSK, CCK)
Frequency	2.4G Band: 802.11b/g/n 2412 - 2484 MHz 5G Band: 802.11 a/n: 5150 – 5250MHz/5725-5850 MHz DFS Band: 5250 – 5350 MHz/5470 – 5725 MHz
Media Access Protocol	CSMA/CA with ACK
Data Rate (auto fallback)	1,2,5.5,6.5,13,13.5,19.5,26,27,39,40.5,52,54,58.5,65,78,81,104, 108,117,121.5,130,135,162,216,243,270,300Mbps (auto sense)
Output Power	10dBm (typically) @ 802.11a 16dBm (typically) @ 802.11b 13dBm (typically) @ 802.11g 13dBm (typically) @ 802.11n
Receiving Sensitivity	300Mbps :Typically-66dBm(g) @10% PER Typically-69dBm(a) @10% PER 54Mbps:Typically-71dBm(g) @10% PER Typically-70dBm(a) @10% PER 11Mbps:Typically-86dBm @8% PER
Security	64/128-bit WEP,WPA/WPA2, WPA-PSK/WPA2-PSK
Channel	2.4G:1~11 Channels (FCC); 1~13 Channels (ETSI) 5G:36,40,44,48,149,153,157,161,165 (FCC);36,40,44,48 (ETSI)

Limited Warranty

TRENDnet warrants its products against defects in material and workmanship, under normal use and service, for the following lengths of time from the date of purchase.

TEW-664UB	3 years limited
------------------	------------------------

If a product does not operate as warranted above during the applicable warranty period, TRENDnet shall, at its option and expense, repair the defective product or deliver to customer an equivalent product to replace the defective item. All products that are replaced will become the property of TRENDnet. Replacement products may be new or reconditioned.

TRENDnet shall not be responsible for any software, firmware, information, or memory data of customer contained in, stored on, or integrated with any products returned to TRENDnet pursuant to any warranty.

There are no user serviceable parts inside the product. Do not remove or attempt to service the product through any unauthorized service center. This warranty is voided if (i) the product has been modified or repaired by any unauthorized service center, (ii) the product was subject to accident, abuse, or improper use (iii) the product was subject to conditions more severe than those specified in the manual.

Warranty service may be obtained by contacting TRENDnet office within the applicable warranty period for a Return Material Authorization (RMA) number, accompanied by a copy of the dated proof of the purchase. Products returned to TRENDnet must be pre-authorized by TRENDnet with RMA number marked on the outside of the package, and sent prepaid, insured and packaged appropriately for safe shipment.

WARRANTIES EXCLUSIVE: IF THE TRENDNET PRODUCT DOES NOT OPERATE AS WARRANTED ABOVE, THE CUSTOMER'S SOLE REMEDY SHALL BE, AT TRENDNET'S OPTION, REPAIR OR REPLACEMENT. THE FOREGOING WARRANTIES AND REMEDIES ARE EXCLUSIVE AND ARE IN LIEU OF ALL OTHER WARRANTIES, EXPRESSED OR IMPLIED, EITHER IN FACT OR BY OPERATION OF LAW, STATUTORY OR OTHERWISE, INCLUDING WARRANTIES OF MERCHANTABILITY AND FITNESS FOR A PARTICULAR PURPOSE. TRENDNET NEITHER ASSUMES NOR AUTHORIZES ANY OTHER PERSON TO ASSUME FOR IT ANY OTHER LIABILITY IN CONNECTION WITH THE SALE, INSTALLATION, MAINTENANCE OR USE OF TRENDNET'S PRODUCTS.

TRENDNET SHALL NOT BE LIABLE UNDER THIS WARRANTY IF ITS TESTING AND EXAMINATION DISCLOSE THAT THE ALLEGED DEFECT IN THE PRODUCT DOES NOT EXIST OR WAS CAUSED BY CUSTOMER'S OR ANY THIRD PERSON'S MISUSE, NEGLIGENCE, IMPROPER INSTALLATION OR TESTING, UNAUTHORIZED ATTEMPTS TO REPAIR OR MODIFY, OR ANY OTHER CAUSE BEYOND THE RANGE OF THE INTENDED USE, OR BY ACCIDENT, FIRE, LIGHTNING, OR OTHER HAZARD.

LIMITATION OF LIABILITY: TO THE FULL EXTENT ALLOWED BY LAW TRENDNET ALSO EXCLUDES FOR ITSELF AND ITS SUPPLIERS ANY LIABILITY, WHETHER BASED IN CONTRACT OR TORT (INCLUDING NEGLIGENCE), FOR INCIDENTAL, CONSEQUENTIAL, INDIRECT, SPECIAL, OR PUNITIVE DAMAGES OF ANY KIND, OR FOR LOSS OF REVENUE OR PROFITS, LOSS OF BUSINESS, LOSS OF INFORMATION OR DATA, OR OTHER FINANCIAL LOSS ARISING OUT OF OR IN CONNECTION WITH THE SALE, INSTALLATION, MAINTENANCE, USE, PERFORMANCE, FAILURE, OR INTERRUPTION OF THE POSSIBILITY OF SUCH DAMAGES, AND LIMITS ITS LIABILITY TO REPAIR, REPLACEMENT, OR REFUND OF THE PURCHASE PRICE PAID, AT TRENDNET'S OPTION. THIS DISCLAIMER OF LIABILITY FOR DAMAGES WILL NOT BE AFFECTED IF ANY REMEDY PROVIDED HEREIN SHALL FAIL OF ITS ESSENTIAL PURPOSE.

Governing Law: This Limited Warranty shall be governed by the laws of the state of California.

Note: AC/DC Power Adapter, Cooling Fan, Cables and Power Supply carry 1-Year Warranty



TRENDnet[®]

Product Warranty Registration

Please take a moment to register your product online.
Go to TRENDnet's website at <http://www.trendnet.com/register>

TRENDnet[®]

20675 Manhattan Place
Torrance, CA 90501
USA