



Quick Installation Guide



TEW-641PC
TEW-643PI
H/W: V1.0R

Table of Contents

English	1
1. Before You Start	1
2. How to Install	2
3. Using the Wireless Adapter	6
Troubleshooting	8

1. Before You Start



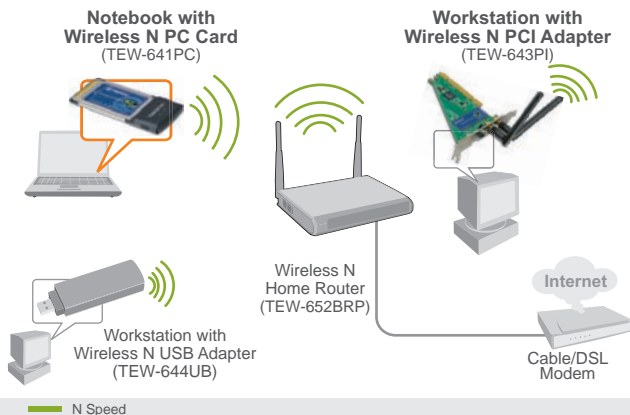
Package Contents

- TEW-641PC/TEW-643PI
- Utility & Driver CD-ROM
- Multi-Language Quick Installation Guide
- 2 x 2dbi Detachable Antennas (TEW-643PI only)

System Requirements

- 32-bit CardBus Type II Card slot (TEW-641PC)
- 32-bit PCI 2.2 slot (TEW-643PI)
- CD-ROM Drive
- CPU: 300MHz or above / 800MHz or above (Windows Vista)
- Memory: 256MB RAM or above / 512MB RAM or above (Windows Vista)
- Windows 2000/XP/Vista

Application



2. How to Install

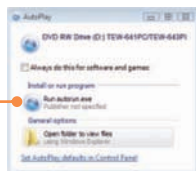
Important! DO NOT install the PCI adapter or PC Card in the computer until instructed to do so.

For Windows Users

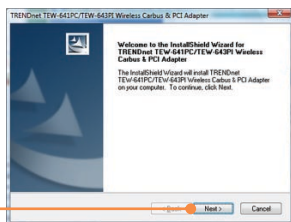
1. Insert the **Utility & Driver CD-ROM** into your computer's CD-ROM Drive and then click **Install Utility**.



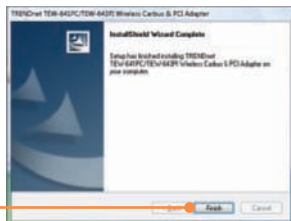
2. Click **Run autorun.exe** (Windows Vista only).



3. Follow the **InstallShield Wizard** instructions. Then click **Next**.



4. Click **Finish**.



Note: Please refer to your computer's user manual regarding hardware installation. Then proceed to the appropriate section below.

TEW-641PC

5. **Shutdown** your computer.



6. Insert PC Card firmly into an available PC Card slot of the notebook PC and then turn **ON** the computer and wait until the Windows desktop appears.



7. Go to **Step 11**.

TEW-643PI

8. **Shutdown** your computer.

9. Open your computer's case.



10. Insert PCI Card firmly into an available PCI Card slot of the desktop PC, attach the included antenna, and then turn **ON** the computer and wait until the Windows desktop appears.

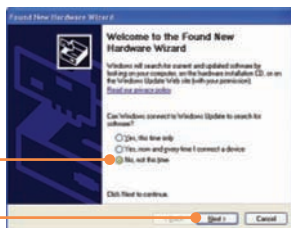


Windows Vista/2000

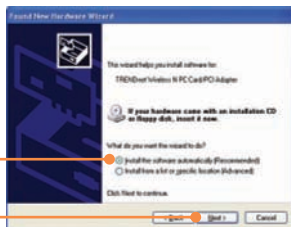
11. Windows Vista/2000 will automatically detect and install the appropriate drivers.

Windows XP

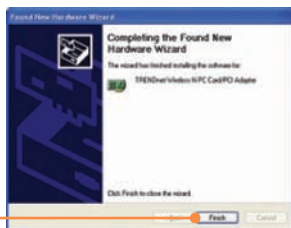
12. The **Found New Hardware Wizard** appears. Select **No**, not this time and then click **Next**.



13. Click **Install the software automatically (Recommended)** and then click **Next**.



14. Click **Finish**.



Your installation is now complete.

For detailed information regarding the TEW-641PC/TEW-643PI configuration and advanced settings, please refer to the User's Guide included on the Utility & Driver CD-ROM or TRENDnet's website at www.trendnet.com

3. Using the Wireless Adapter

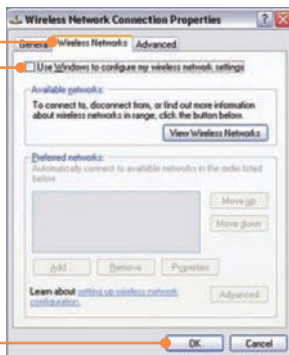
Note:

1. Windows XP Wireless Zero Configuration utility must first be disabled as shown in step 1 and 2. If it is already disabled, then go to Step 3.
2. For Windows 2000/Vista, proceed to Step 3.

1. Go into the **Control Panel** and double-click **Network Connections** icon. Right-click **Wireless Network Connection** icon and click **Properties**.



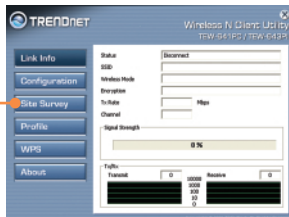
2. Click the **Wireless Networks** tab, uncheck **Use Windows to configure my wireless network settings**, and then click **OK**.



3. Double-click the **Wireless computer** icon in your system tray.



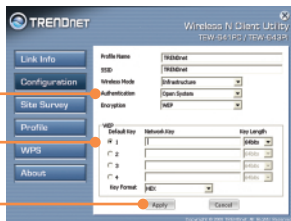
4. Click **Site Survey**.



5. Click the **SSID** that matches your wireless access point and then click **Connect**.



6. If encryption is enabled on your wireless network, the proper **Authentication** type and **Encryption** type will be selected automatically. Enter the encryption key and click **Apply**.



Wireless configuration is now complete.

For detailed information regarding the TEW-641PC/TEW-643PI configuration and advanced settings, please refer to the User's Guide included on the Utility & Driver CD-ROM or TRENDnet's website at www.trendnet.com

Register Your Product

To ensure the highest level of customer service and support, please take a moment to register your product Online at: www.trendnet.com/register
Thank you for choosing TRENDnet

Q1: I inserted the Utility & Driver CD-ROM into my computer's CD-ROM Drive and the installation menu does not appear automatically. What should I do?

A1: If the window does not appear automatically, click **Start**, click **Run**, and type **D:\autorun** where "D" in "D:\autorun.exe" is the letter assigned to your CD-ROM Drive, and then press the ENTER key on your keyboard.

Q2: I completed all the steps in the quick installation guide, but my Wireless PC Adapter is not connecting to my access point. What should I do?

A2: First, verify that the Network Name (**SSID**) matches your wireless router or access point's Network Name (**SSID**). Second, please check with your network administrator for security key in order to access a secured wireless access point or router. Please refer to the User's Guide for more information regarding wireless network security. Third, check your TCP/IP properties to ensure that Obtain an IP address automatically is selected. Fourth, double-click the Wireless Configuration Utility icon, click Site Survey and then click Refresh. Check to see if there are any available wireless networks listed.

Q3: Windows is unable to recognize my hardware. What should I do?

A3: Make sure your computer meets the minimum requirements as specified in Section 1 of this quick installation guide. Also, you must install the wireless configuration utility BEFORE you physically install your network card. Lastly, move the Wireless Adapter to a different PCI/PC Card Slot.

Q4: I cannot open the wireless configuration utility. What should I do?

A4: Access your device manager to make sure the adapter is installed properly. If you see a networking device with a yellow question mark or exclamation point, you will need to reinstall the device and/or the drivers. To access your device manager, right-click My Computer, click Properties, click the Hardware tab, and then click Device Manager.

If you still encounter problems or have any questions regarding the TEW-641PC/TEW-643PI, please refer to the User's Guide included on the Utility & Driver CD-ROM or contact TRENDnet's Technical Support Department.

Certifications

This equipment has been tested and found to comply with FCC and CE Rules.

Operation is subject to the following two conditions:

- (1) This device may not cause harmful interference.
- (2) This device must accept any interference received. Including interference that may cause undesired operation.



Waste electrical and electronic products must not be disposed of with household waste. Please recycle where facilities exist. Check with you Local Authority or Retailer for recycling advice.



NOTE: THE MANUFACTURER IS NOT RESPONSIBLE FOR ANY RADIO OR TV INTERFERENCE CAUSED BY UNAUTHORIZED MODIFICATIONS TO THIS EQUIPMENT. SUCH MODIFICATIONS COULD VOID THE USER'S AUTHORITY TO OPERATE THE EQUIPMENT.

ADVERTENCIA

En todos nuestros equipos se mencionan claramente las características del adaptador de alimentación necesario para su funcionamiento. El uso de un adaptador distinto al mencionado puede producir daños físicos y/o daños al equipo conectado. El adaptador de alimentación debe operar con voltaje y frecuencia de la energía eléctrica domiciliar existente en el país o zona de instalación.



TRENDnet[®]

Product Warranty Registration

Please take a moment to register your product online.
Go to TRENDnet's website at <http://www.trendnet.com/register>

TRENDnet[®]

20675 Manhattan Place
Torrance, CA 90501
USA