



TE100-PCBUSR

10/100Mbps PCMCIA 32-bit CardBus Ethernet Card with XpressPort

TRENDnet's TE100-PCBUSR gears with leading 32-bit bus architecture and full-duplex capabilities, which liberates high-speed network performance by providing a smooth connection to both 10/100Mbps Ethernet environments. This card is the ultimate solution for the CardBus equipped addition. Its auto-negotiation feature also configures to meet any kind of network card. It also guarantees easy installation and extra low power consumption with power-down mode and broad compatibility. With XpressPort feature, users can prevent from lost or broken cable connectors and jacks. You will be hassle-free and dongle-free in connecting to information with the TE100-PCBUSR.



FEATURES

- ...> Inserts to top PCMCIA type II slot and leaves bottom slot available for other PCMCIA devices
- ...> 32-bit bus-mastering data transfer
- ...> 10/100Mbps data rates auto-negotiation
- ...> Integrated RJ-45 XpressPort for dongle/coupler-free connection
- ...> Full-duplex mode
- ...> Supports Windows 95/98/ME/NT/2000/XP, Linux
- ...> PC Card hot swap
- ...> Ultra low power consumption
- ...> Innovative power-down mode
- ...> Compatible with extensive notebook models
- ...> 5-years warranty

BENEFITS

- ...> **User Friendly:**
Just plug the 10/100Mbps card into your workstation and it's ready to go!
- ...> **Flexibility:**
Supports all major Network Operating Systems.
- ...> **Compatibility:**
Compatible with extensive notebook computers.
- ...> **Low Cost:**
Integrated XpressPort reduces user down time and eliminates dongle/jack replacement.



TE100-PCBUSR

10/100Mbps PCMCIA 32-bit CardBus Ethernet Card with XpressPort™

SPECIFICATIONS

Standards:

- IEEE 802.3 for 10Base-T, IEEE 802.3u for 100Base-TX
PCMCIA CardBus PC Card standard

Cabling:

- CAT3, 4, 5 UTP/STP for 10Base-T, 100 meters max.
CAT5 UTP/STP for 100Base-TX, 100 meters max.

Card & Socket Service Support:

- PC Card standard, Windows NT 4.x direct enabler,
DOS/Windows 3.1, Direct enabler

Network Drivers:

- Windows for Workgroup 3.11, Windows 95/98/ME/NT/
2000/XP, Novell NetWare 3.x & 4.x Client, Personal
NetWare, NetWare Microsoft LAN Manager, Artisoft
LANtastic, IBM LAN, DEC Pathworks, FTP, PC/TCP,
Packet Driver, Linux

Diagnostic LEDs:

- Link 10Mbps, Link 100Mbps, Activity

Dimensions:

- 120 x 54 x 16 mm (4.72 x 2.13 x 0.63 inch)

Temperature:

- Operating: 0° ~ 65° C (32° ~ 149° F)
• Storage: 0° ~ 70° C (-4° ~ 158° F)

Humidity:

- 10 % to 95 % non-condensing

Power Consumption:

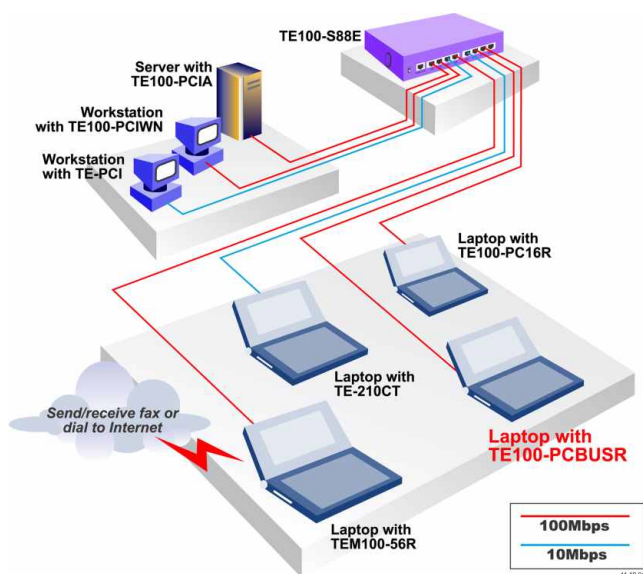
- 10Mbps: +3.3VDC, 107mA max.
• 100Mbps: +3.3VDC, 104mA max.
• Power Down: 98mA.

Certifications:

- FCC, UL, CE



NETWORKING SOLUTIONS



To Order Please Call:
1-888-326-6061

RELATED PRODUCT

- **TE100-PCBUSR:**
10/100Mbps PCMCIA 32-bit CardBus Ethernet Card with XpressPort
- **TE100-PC16R:**
10/100Mbps PCMCIA Ethernet Card with XpressPort
- **TFM-560R:**
56Kbps (V.90) High Speed PCMCIA Fax Modem with XpressPort (Lucent Chipset)
- **TEM100-56R:**
10/100Mbps Fast Ethernet + 56Kbps Fax Modem Card with XpressPort

ORDERING INFORMATION

TRENDware International, Inc.
3135 Kashiwa Street
Torrance, CA. 90505. USA
Tel: 310-891-1100
Fax: 310-891-1111
Web: www.TRENDNET.com
Email: sales@trendware.com

