

# TBW-102UB

**Bluetooth USB Adapter Quick Installation Guide**

**Guide d'installation rapide de l'adaptateur Bluetooth**

**Anleitung zur Schnellinstallation des Bluetooth USB-Adapters**

**Guía de Instalación Rápida del Adaptador USB Bluetooth**

Version 05.13.04



**TRENDnet**<sup>®</sup>  
TRENDware, USA  
**What's Next in Networking**

# Table of Contents

English .....	1
1. Prepare for Installation .....	1
2. Install Bluetooth Utility .....	2
3. Check USB Adapter Installation Status .....	7
4. Bluetooth Settings .....	9
5. Remove Bluetooth USB Adapter .....	13
Troubleshooting .....	15

# English QIG

## 1. Prepare for Installation

Thank you for purchasing the TBW-102UB High-Power Bluetooth USB Adapter. This adapter will allow you to share files, resources, and an internet connection between multiple Bluetooth-enabled devices.

This guide will help you set up and configure your Bluetooth adapter. Following the installation instructions should be quick and easy. If you run into problems, please refer to the Troubleshooting section or User's Guide on the CD-ROM. If you need further technical support, please visit [www.trendnet.com](http://www.trendnet.com) or call us by phone.

### Verify Package Contents

Please make sure you have everything in the box:



### Verify Equipment

Before installing the Bluetooth adapter, you should have a personal computer with:

- Windows 98SE, ME, 2000 or XP installed
- One USB 1.1 port available
- A CD-ROM Drive

## 2. Install Bluetooth Utility

**NOTE:** You must install the Bluetooth Utility program before you install the Bluetooth USB Adapter.

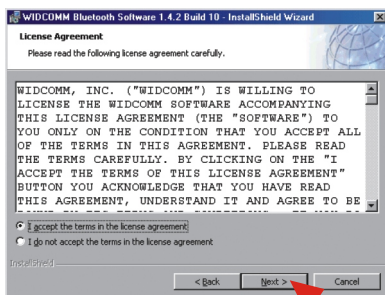
1. Turn on your computer.
2. Insert the Utility CD-ROM into your CD-ROM Drive.



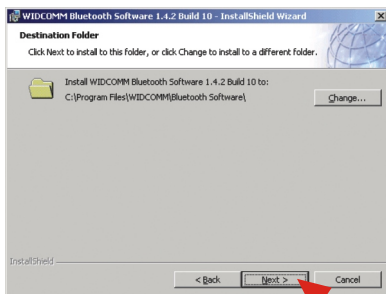
3. The Auto-Run function will automatically start the software installation wizard. If the Auto-Run function does not start automatically, please browse the installation CD to find the "Setup.exe" file. Double-click **setup.exe** to continue.
4. After the Bluetooth Utility Setup window appears, click **Next** to continue.



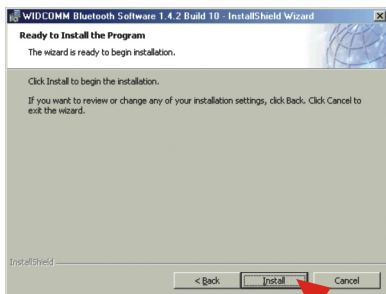
5. The License Agreement Window will appear. Read through the license agreement, select **I accept the terms in the license agreement**, and click **Next**.



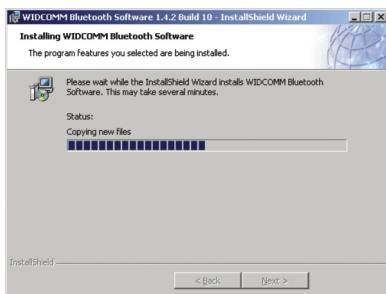
6. Click **Next** to continue.



7. Click **Install** to start the utility installation.



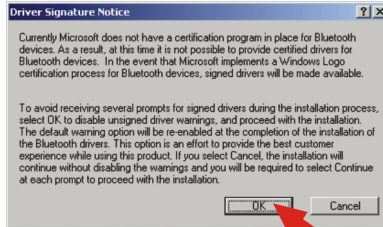
8. Windows will start installing the utility.



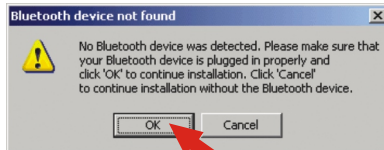
**Windows 98SE** users will see the following message. Insert your Windows 98SE CD-ROM into your CD-ROM drive, click **OK**, and select **CD-ROM**. This will allow your system to update the appropriate files.



**Windows 2000/XP** users will see the following message. Click **OK** to continue.



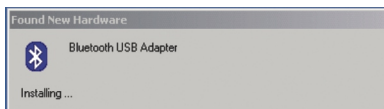
9. During the installation, the following window will appear.



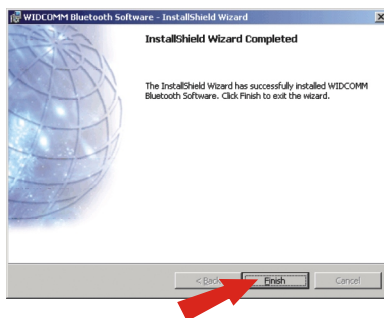
10. When you see the above message, insert the Bluetooth USB Adapter into your USB port and click **OK** to continue.



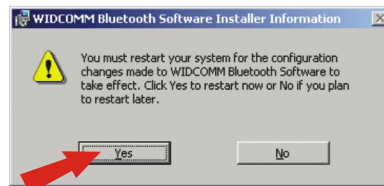
11. Once the Bluetooth USB Adapter is inserted properly, the following window will appear, and Windows will automatically install the Bluetooth USB Adapter driver.



12. Click **Finish** to complete the Utility Installation.



**NOTE:** For Windows 98SE/ME/2000 users, the Windows will prompt you with a message to restart your PC. Click **Yes** to restart the computer.



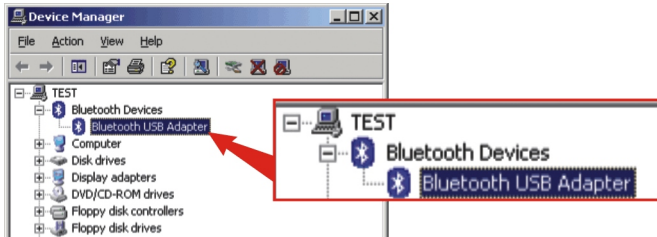


# 3. Check USB Adapter Installation Status

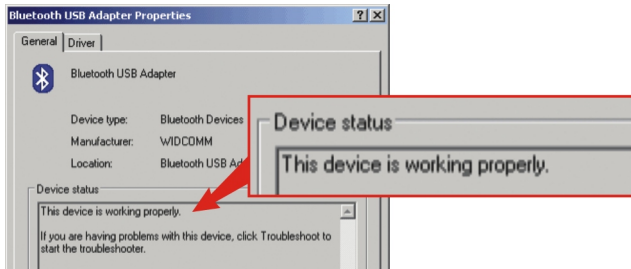
This section is to ensure that your Bluetooth USB Adapter is installed and is working properly.

## Windows 2000/XP

1. Find Start Button located on Desktop.
2. Click **Start**, click **Settings** and then click **Control Panel**.
3. Double-Click the **System** Icon and the **System Properties** box will appear.
4. Go to the **Hardware** Tab, click on the **Device Manager** button, the Device Manager Window will appear. Double-Click on **Bluetooth Devices**, **Bluetooth USB Adapter** will be listed in this category.



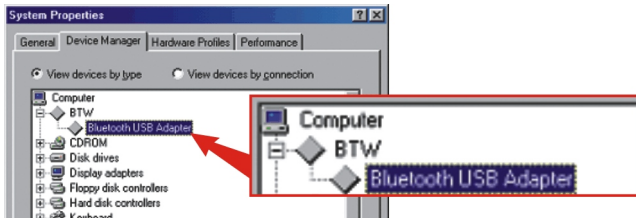
5. Right-click on **Bluetooth USB Adapter**, and select **Properties**. The Device Status field will say "This device is working properly." If it doesn't, refer to the **Troubleshooting** section (Q1).



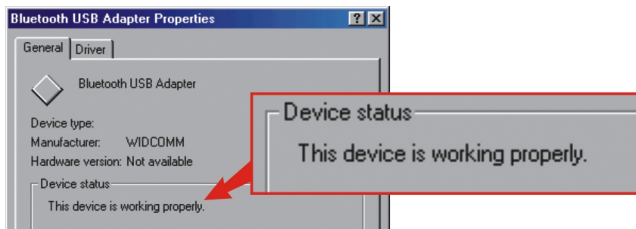
6. Your Bluetooth USB Adapter is properly installed and ready for use.

## Windows 98SE/ME

1. Find the **Start** Button located on Desktop.
2. Click **Start**, click **Settings** and click **Control Panel**.
3. Double-Click the **System Icon** and the System Properties Box will appear.
4. Go to the **Device Manager** tab, Double-Click on **BTW. Bluetooth USB Adapter** will be listed in this category.



5. Right-click on **Bluetooth USB Adapter**, and select **Properties**. The Device Status field will say "This device is working properly." If it doesn't, refer to the **Troubleshooting** section (Q1).



6. Your Bluetooth USB Adapter is properly installed and ready for use.

## 4. Bluetooth Settings

This section helps you initialize Bluetooth configuration and enable the features you need so you can begin to use your Bluetooth USB Adapter.

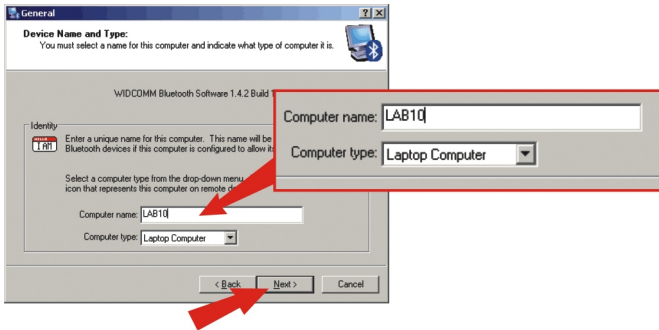
1. On the Desktop, find the Bluetooth Icon in the system tray, next to the clock.



2. Double-click the Bluetooth Icon, and the following window will appear. Click the **Next** button to continue.



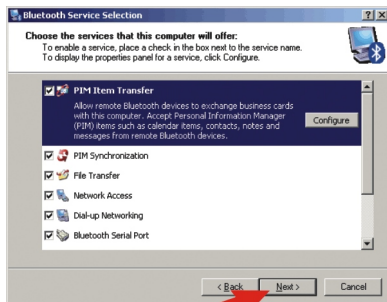
3. This window will show your computer name and computer type. If you are using a laptop, select **Laptop Computer** for Computer type or select **Personal Computer** for Desktop PC. Click **Next** to continue.



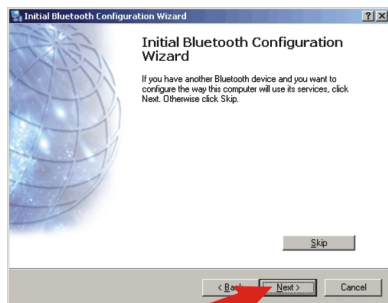
4. The Initial Bluetooth Configuration Wizard will appear, click **Next** to continue.



5. Select or de-select the features you will or will not use, and click **Next**. (All features are selected by default)



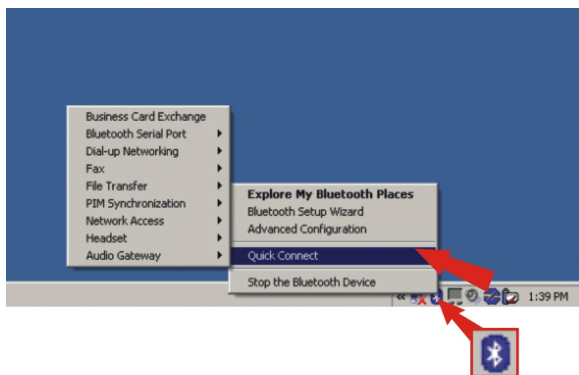
6. Click **Skip** to avoid creating a connection at this point.



7. Click **Finish** to complete the initialization.



8. The TBW-102UB High-Power Bluetooth USB Adapter is now completely installed. You may right-click on the Bluetooth Icon and select **Quick Connect** to begin using any of your adapter's functions.



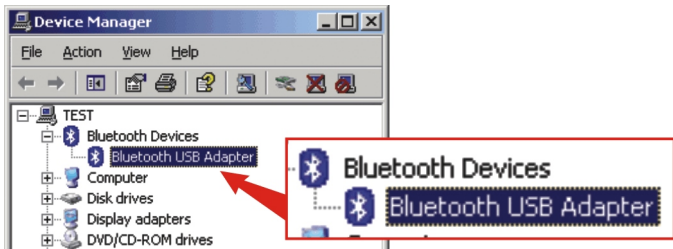
**NOTE:** For more details on each function, please go through the User's Guide on the Utility CD-ROM.

# 5. Remove Bluetooth USB Adapter

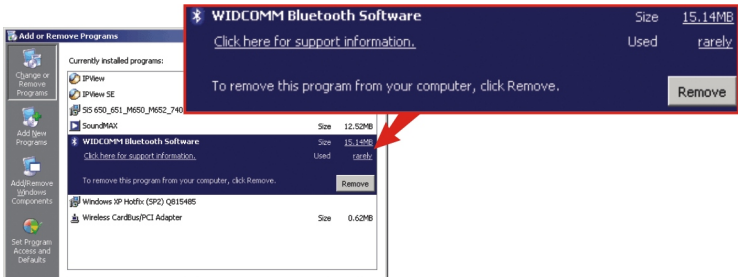
This section helps you remove the Bluetooth USB Adapter and Utility Program from your computer. You may perform this task when the Bluetooth USB Adapter's Device Status says "not working properly" or when there is an updated Driver or Utility available for the Bluetooth USB Adapter.

## Windows 2000/XP

1. Find the **Start** Button located on Desktop.
2. Click **Start**, click **Settings** and click on Control Panel.
3. Double-Click the **System** Icon and the **System Properties** Box will appear.
4. Click the **Hardware** Tab and click on **Device Manager** button
5. Right click on **Bluetooth USB Adapter** and select **Uninstall**.



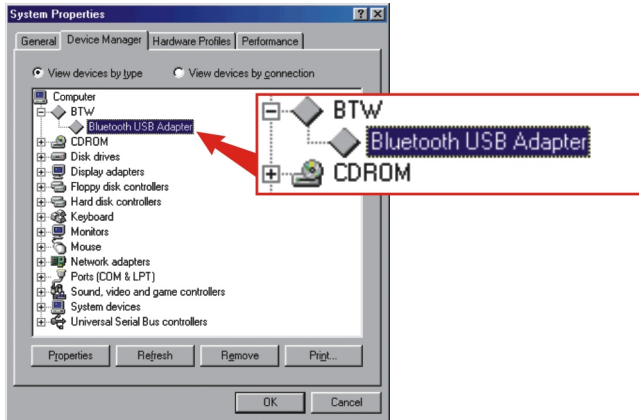
6. After the driver is uninstalled, return to the **Control Panel**, and double-click the **Add/Remove Program** icon; the **Add/Remove Program** window will appear.
7. Find **WIDCOMM Bluetooth Software**, select that and click on **Remove**.



8. You have successfully removed the Bluetooth USB Adapter software.

## Windows 98SE/ME

1. Find the **Start** Button located on the Desktop.
2. Click **Start**, click **Settings** and then click on **Control Panel**.
3. Double-Click the **System** Icon and **System Properties** Box will appear.
4. Click the **Device Manager** Tab, right click on **Bluetooth USB Adapter**, and select **Uninstall**.



5. After the driver is uninstalled, return to **Control Panel** and double-click the **Add/Remove Program** Icon; the **Add/Remove Program** window will appear.
6. Find **WIDCOMM Bluetooth Software**, select it, and click **Remove**.
7. Once the program is removed, Windows will display a message to restart the PC; click **Yes** to restart.
8. You have successfully uninstalled the Bluetooth Adapter software.



**Q1: If the Device Status indicates the Bluetooth USB Adapter is not working properly, what do I do?**

**A1:** Please follow the **Remove Bluetooth USB Adapter** procedures to remove the Bluetooth USB Adapter and reinstall it again.

**Q2: How do I setup connection between Bluetooth devices?**

**A2:** Please find the detail information from the User's Guide on the CD-ROM or additional information from TRENDnet's website.

**Q3: How do I transfer files between my PC and my Cell Phone?**

**A3:** You need to make sure your Cell Phone is Bluetooth enhanced and the software for the phone can allow you to transfer files. If yes, find the detail information from the User's Guide on the CD-ROM or additional information from TRENDnet's website.

## **Contact Technical Support**

Telephone: +1-310-626-6252

Fax: +1-310-626-6267

Website: [www.TRENDNET.com](http://www.TRENDNET.com)

E-mail: [support@trendware.com](mailto:support@trendware.com)

## **Technical Support Hours**

7:00AM ~ 6:00PM, Monday through Friday

Pacific Standard Time (except holidays)



TRENDware, USA

**What's Next in Networking**

## Product Warranty Registration

Please take a moment to register your product online.  
Go to TRENDware's website at <http://www.TRENDNET.com>

**TRENDware International, Inc.**  
3135 Kashiwa Street  
Torrance, CA 90505

**<http://www.TRENDNET.com>**