

TBW-101UB

**Compact Bluetooth USB Adapter
Quick Installation Guide**

**Guide d'installation rapide de
l'adaptateur USB Bluetooth**

**Kurzanleitung zur Installation des
Bluetooth USB-Adapters**

**Guía de instalación rápida del
adaptador USB Bluetooth**

Version 11.18.04



TRENDnet[®]
TRENDware, USA
What's Next in Networking

Table of Contents

English	1
1. Prepare for Installation	1
2. Install Bluetooth Utility	2
3. Verify Installation	6
4. Bluetooth Settings	10
Troubleshooting	13

English QIG

1. Prepare for Installation

Thank you for purchasing the TBW-101UB Compact Bluetooth USB Adapter. This adapter will allow you to share files, resources, and an internet connection between multiple Bluetooth-enabled devices.

This guide will help you set up and configure your Bluetooth adapter. Following the installation instructions should be quick and easy. If you run into problems, please refer to the Troubleshooting section or User's Guide on the CD-ROM. If you need further technical support, please visit www.trendnet.com or call us by phone.

Verify Package Contents

Please make sure you have everything in the box:



Verify Equipment

Before installing the Bluetooth adapter, you should have a personal computer with:

- Windows 98SE, ME, 2000 or XP installed
- One USB 1.1 port available
- A CD-ROM Drive

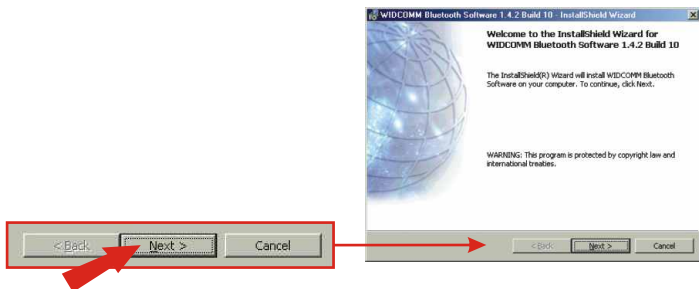
2. Install Bluetooth Utility

NOTE: You must install the Bluetooth Utility program before you install the Bluetooth USB Adapter.

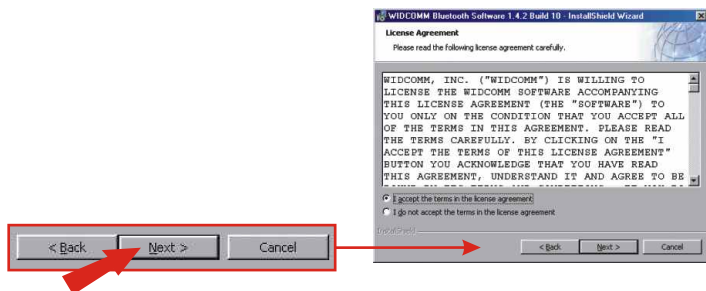
1. Turn on your computer.
2. Insert the Utility CD-ROM into your CD-ROM Drive.



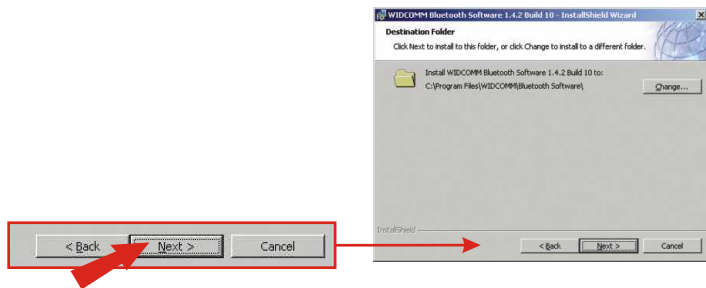
3. The Auto-Run function will automatically start the software installation wizard. If the Auto-Run function does not start automatically, please browse the installation CD to find the "Setup.exe" file. Double-click **setup.exe** to continue.
4. Click **Next**.



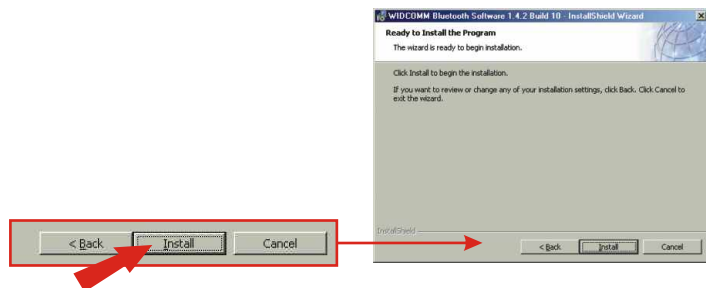
5. Click I accept the terms in the license agreement, and click **Next**.



6. Click **Next**.



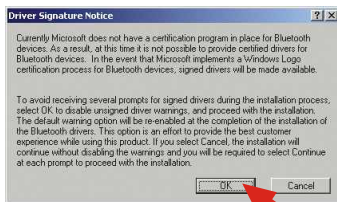
7. Click **Install**.



Windows 98SE users will see the following message. Insert your Windows 98SE CD-ROM into your CD-ROM drive, click **OK**, and select **CD-ROM**. This will allow your system to update the appropriate files.



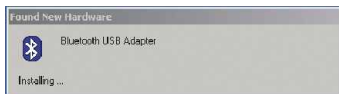
Windows 2000/XP users will see the following message. Click **OK** to continue.



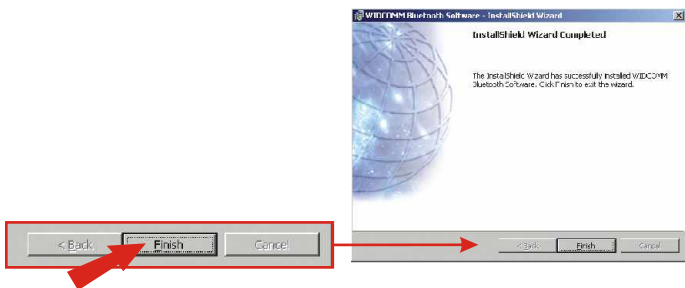
8. During installation, the following window will appear.



9. When you see the above message, insert the Bluetooth USB Adapter into your USB port and click **OK** to continue.



10. Click **Finish**.



NOTE: For Windows 98SE/ME/2000 users, the Windows will prompt you with a message to restart your PC. Click **Yes** to restart the computer.

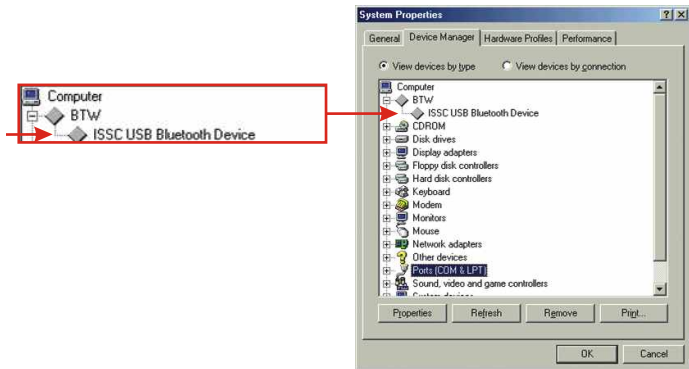


3. Verify Installation

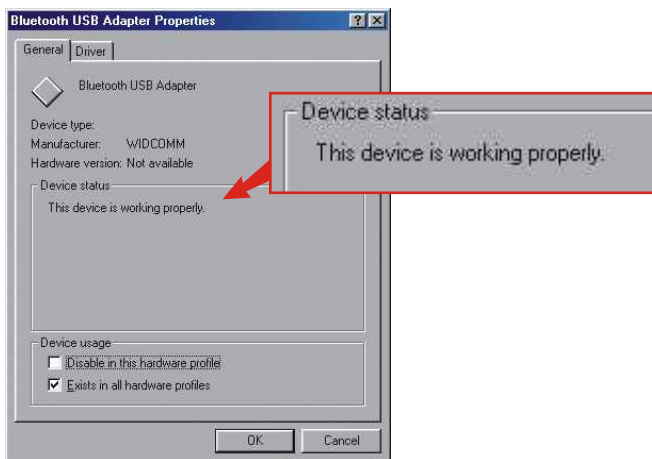
This section is to ensure that your Bluetooth USB Adapter is installed and is working properly.

Windows 98SE/ME

1. Click **Start**, highlight **Settings** and click **Control Panel**.
2. Double-Click the **System** Icon and the **System Properties** box will appear.
3. Go to the **Device Manager** tab, and double-click on **BTW**. The **Bluetooth USB Adapter** will be listed in this category.



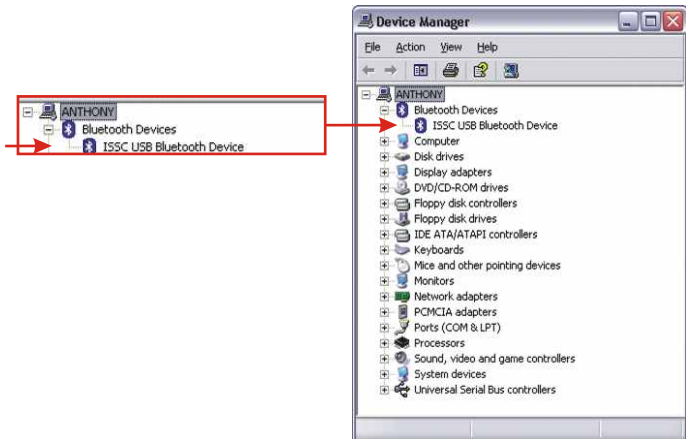
4. Right-click on **Bluetooth USB Adapter**, and select **Properties**. The Device Status field will say “This device is working properly.” If it doesn't, refer to the **Troubleshooting** section (Q1).



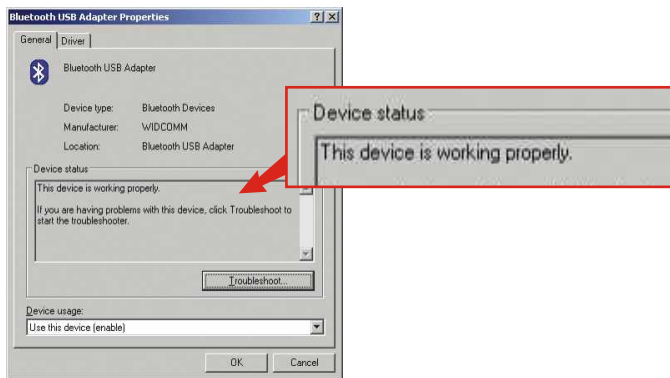
5. Your Bluetooth USB Adapter is properly installed and ready for use.

Windows 2000/XP

1. Click **Start**, and then click **Control Panel**.
2. Double-Click the **System Icon** and the **System Properties** Box will appear.
3. Click the **Hardware** Tab. Then, click the **Device Manager** button; the Device Manager Window will appear. Double-click **Bluetooth Devices**. Bluetooth USB Adapter will be listed in this category.



4. Right-click on **Bluetooth USB Adapter**, and select **Properties**. The Device Status field will say “This device is working properly.” If it doesn't, refer to the **Troubleshooting** section (Q1).



5. Your Bluetooth USB Adapter is properly installed and ready for use.

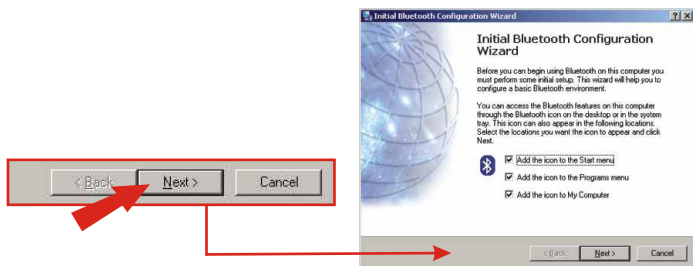
4. Bluetooth Settings

This section helps you initialize Bluetooth configuration and enable the features you need so you can begin to use your Bluetooth USB Adapter.

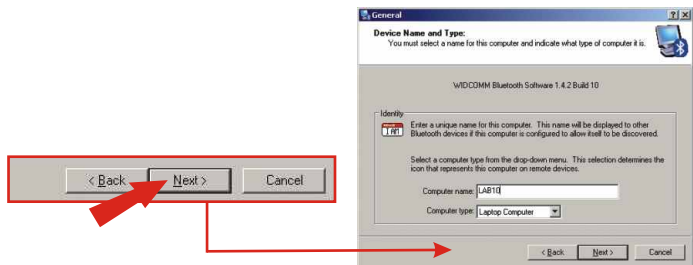
1. On the Desktop, find the Bluetooth Icon in the system tray, next to the clock. Double-Click the **Bluetooth icon** in the System Tray.



2. Click **Next**.



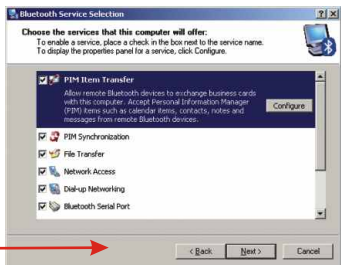
3. Select Laptop Computer for Computer type or select Personal Computer for Desktop PC. Click **Next**.



4. Click **Next**.



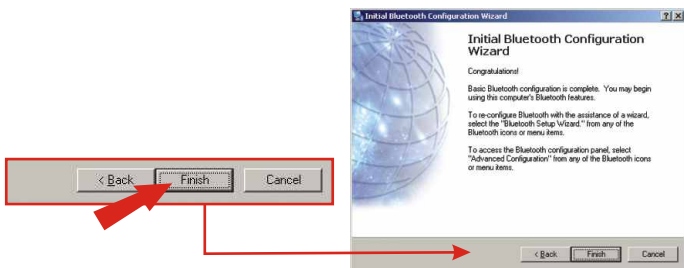
5. Select or de-select the features you will or will not use. Click **Next**.



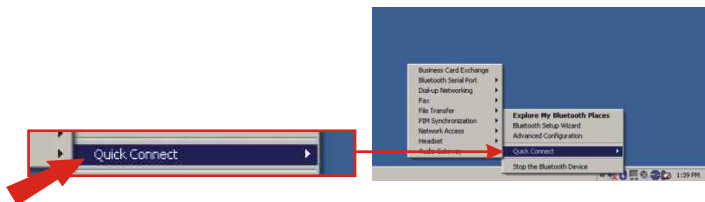
6. Click **Skip**.



7. Click **Finish**.



8. The TBW-101UB (V.2) High-Power Bluetooth USB Adapter is now completely installed. You may right-click on the Bluetooth Icon and select **Quick Connect** to begin using any of your adapter's functions.



NOTE: For additional details on each function, refer to the User's Guide on the Utility CD-ROM.

Troubleshooting

Q1: If the Device Status indicates the Bluetooth USB Adapter is not working properly, what do I do?

A1: Please follow the **Remove Bluetooth USB Adapter** procedures on the User's Guide to remove the Bluetooth USB Adapter and reinstall it Again.

Q2: How do I setup connection between Bluetooth devices?

A2: Please find the detail information from the User's Guide on the CD-ROM or additional information from TRENDnet's website.

Q3: How do I transfer files between my PC and my Cell Phone?

A3: You need to make sure your Cell Phone is Bluetooth enhanced and the software for the phone can allow you to transfer files. If yes, find the detail information from the User's Guide on the CD-ROM or additional

Contact Technical Support

Telephone: +1-310-626-6252

Fax: +1-310-626-6267

Website: www.TRENDNET.com

E-mail: support@trendware.com

Technical Support Hours

7:00AM ~ 6:00PM

Monday through Friday

Pacific Standard Time (except holidays)

Certifications

This equipment has been tested and found to comply with FCC and CE Rules. Operation is subject to the following two conditions:

- (1) This device may not cause harmful interference.
- (2) This device must accept any interference received.
Including interference that may cause undesired operation.



TRENDnet[®]

TRENDware, USA

What's Next in Networking

Product Warranty Registration

Please take a moment to register your product online.
Go to TRENDware's website at <http://www.TRENDNET.com>

TRENDware International, Inc.
3135 Kashiwa Street
Torrance, CA 90505

<http://www.TRENDNET.com>