



# TRENDNET<sup>®</sup>

— PRODUCT CATALOG —

MULTI-GIGABIT

SWITCHES

PoE

INDUSTRIAL

FIBER

WIRELESS

SURVEILLANCE

MORE

- Multi-Gigabit ..... 4
  - Managed & Unmanaged Switches
  - SFP+ Switches & SFP+ Modules
  - PoE+ & PoE++ Switches
  - Network Adapters & SFP+ Modules
  - PoE Injectors ..... See PoE Solutions & Industrial PoE
  - Fiber Media Converters .....See Fiber
- Network Cloud Management ..... 8
  - TRENDnet Hive
- Network Switches..... 9
  - Managed &Unmanaged Switches
- PoE Switches ..... 11
  - PoE, PoE+, & PoE++ Switches
  - Managed & Unmanaged Switches
  - Smart Surveillance Switches
  - Long Range PoE+
  - Injectors, Extenders, & Splitters
- IP Power ..... 17
  - Power Distribution Unit
- Fiber ..... 18
  - Media Converters
  - SFP Modules

- Industrial ..... 20
  - Managed & Unmanaged Switches
  - Multi-Gigabit Switches
  - PoE+ & PoE++ Switches
  - Specialty Switches (Variable Voltage, Front Access, EN50155)
  - Injectors, Extenders, & Splitters
  - Fiber Media Converters & SFP Modules
  - Wireless Routers
  - Modbus Gateways
- Wireless ..... 29
  - SMB Routers (Wireless & Wired)
  - Indoor Access Points
  - Outdoor Access Points
- Surveillance ..... 32
  - PoE Network Cameras
  - Network Video Recorders
- Additional Product Categories ..... 33
  - Powerline · MoCA® · USB · USB-C
  - Home Wireless · KVMs · Patch Panels
- Contact TRENDnet ..... 34





TRENDnet's vision is to build innovative, easy-to-use, and reliable Networks People Trust™. TRENDnet solutions network countless devices to enable your connected lifestyle and workplace. Building award-winning networking solutions since 1990, TRENDnet connects you with what you value most. Founded in Torrance, California, TRENDnet has grown to become a leading global networking hardware brand.



# Multi-Gigabit Managed Switches

See more Multi-Gigabit Switches in the Industrial Switches section.



	L2 SFP/SFP+ Switches			10G Web Smart	2.5G Web Smart			Gigabit Web Smart with 10G SFP+	
	TL2-F7120	TL2-F7080	TL2-F70284	TEG-7124WS	TEG-3284WS	TEG-3182WS	TEG-3102WS	TEG-3524S	TEG-30284
Ports	12 x 10G SFP+, 1 x RJ-45 Console	8 x 10G SFP+, 1 x RJ-45 Console	24 x Gigabit SFP, 4 x 10G SFP+	8 x 10G, 4 x 10G SFP+	24 x 2.5G, 4 x 10G SFP+	16 x 2.5G, 2 x 10G SFP+	8 x 2.5G, 2 x 10G SFP+	48 x Gigabit, 4 x 10G SFP+	24 x Gigabit, 4 x 10G SFP+
Switching capacity	240Gbps	160Gbps	128Gbps	240Gbps	200Gbps	120Gbps	80Gbps	176Gbps	128Gbps
Jumbo frames	10KB	10KB	12KB	10KB	12KB	12KB	10KB	10KB	10KB
RAM buffer	2MB	1.5MB	2MB	2MB	2MB	1.5MB	1.5MB	2MB	1.5MB
Forwarding rate (64-byte packet size)	178.6Mpps	119.04Mpps	95.2Mpps	178.56Mpps	130.95Mpps	89.28Mpps	178.56Mpps	130.95Mpps	95.2Mpps
MAC address table	32K	16K	32K	32K	32K	16K	16K	32K	16K
VLAN	Asymmetric, port-based, multiple management assignment, up to 256 VLAN groups, 802.1Q, dynamic GVRP, private, voice			Asymmetric, port-based, 802.1Q, private, voice, GVRP	Multiple management assignment, asymmetric, 802.1Q, dynamic GVRP, MAC-based, protocol-based, up to 256 VLAN groups, private, voice		Asymmetric, port-based, 802.1Q, private, voice, GVRP		
ACL	IPv4 L2-L4 & IPv6	IPv4 L2-L4 & IPv6	IPv4 L2-L4 & IPv6	IPv4 L2-L4 & IPv6	IPv4 L2-L4 & IPv6	IPv4 L2-L4 & IPv6	IPv4 L2-L4 & IPv6	IPv4 L2-L4 & IPv6	IPv4 L2-L4 & IPv6
IPv6	✓	✓	✓	✓	✓	✓	✓	✓	✓
Static IP routing	✓	✓	✓	✓	-	-	✓	✓	-
DoS prevention	✓	✓	✓	✓	✓	✓	✓	✓	✓
802.1ab LLDP	✓	✓	✓	✓	✓	✓	✓	✓	✓
802.1X	✓	✓	✓	✓	✓	✓	✓	✓	✓
LACP (802.3ad)	✓	✓	✓	✓	✓	✓	✓	✓	✓
CoS (802.1p)	✓	✓	✓	✓	✓	✓	✓	✓	✓
Spanning tree	STP, RSTP, MSTP	STP, RSTP, MSTP	STP, RSTP, MSTP	STP, RSTP, MSTP	STP, RSTP, MSTP	STP, RSTP, MSTP	STP, RSTP, MSTP	STP, RSTP, MSTP	STP, RSTP, MSTP
Multicast (IGMP)	v1, v2, v3	v1, v2, v3 awareness	v1, v2, v3	v1, v2, v3	v1, v2	v1, v2	v1, v2, v3	v1, v2, v3	v1, v2, v3
SNMP	v1, v2c, v3	v1, v2c, v3	v1, v2c, v3	v1, v2c, v3	v1, v2c, v3	v1, v2c, v3	v1, v2c, v3	v1, v2c, v3	v1, v2c, v3
Fan	Smart fan	Smart fan	Smart fans	Smart fan	Smart fan	Fanless	Fanless	Smart fan	Fanless
Power supply	Internal	Internal	Internal	Internal	Internal	Internal	Internal	Internal	Internal
Mounting	Rack	Rack	Rack	Rack	Rack	Rack	-	Rack	Rack
Cloud	-	-	-	-	Hive compatible**	Hive compatible**	-	-	Hive compatible**
TAA compliant	✓	✓	✓	✓	✓	✓	✓	✓	✓
NDAA compliant	✓	✓	✓	✓	✓	✓	✓	✓	✓
Warranty	Lifetime*	Lifetime*	Lifetime*	Lifetime*	Lifetime*	Lifetime*	Lifetime*	Lifetime*	Lifetime*

\*See warranty policy at TRENDnet.com.

\*\*Additional fee applies.

Not available in UK.

Not available in Europe / UK.

Compatible with Hive.



# Multi-Gigabit Managed PoE Switches

See more Multi-Gigabit PoE solutions in the PoE Solutions section.



	10G L2 PoE++	2.5G Web Smart PoE++	Gigabit Web Smart PoE+ with 10G SFP+		
	TPE-7124SBF	TPE-3102WS	TPE-3524SF	TPE-3524S	TPE-30284
Ports	8 x 10G PoE++, 4 x 10G SFP+	8 x 2.5G PoE+, 2 x 10G SFP+	48 x Gigabit PoE+, 4 x 10G SFP+	48 x Gigabit PoE+, 4 x 10G SFP+	24 x Gigabit PoE+, 4 x 10G SFP+
PoE power budget	720W	240W	740W	410W	370W
Max. power per port	95W	30W	30W	30W	30W
Switching capacity	240Gbps	80Gbps	176Gbps	176Gbps	128Gbps
Jumbo frames	10KB	10KB	10KB	10KB	10KB
RAM buffer	2MB	1.5MB	2MB	2MB	1.5MB
Forwarding rate (64-byte packet size)	178.56Mpps	178.56Mpps	130.95Mpps	130.95Mpps	95.2Mpps
MAC address table	32K	16K	32K	32K	16K
VLAN	802.1Q, dynamic GVRP, up to 256 VLAN groups, voice	Asymmetric, port-based, 802.1Q,private, voice, GVRP	Asymmetric, port-based, 802.1Q,private, voice, GVRP		
ACL	IPv4 L2-L4 & IPv6	IPv4 L2-L4 & IPv6	IPv4 L2-L4 & IPv6	IPv4 L2-L4 & IPv6	IPv4 L2-L4 & IPv6
IPv6	✓	✓	✓	✓	✓
Static IP routing	✓	✓	✓	✓	-
DoS prevention	✓	✓	✓	✓	✓
802.1ab LLDP	✓	✓	✓	✓	✓
802.1X	✓	✓	✓	✓	✓
LACP (802.3ad)	✓	✓	✓	✓	✓
CoS (802.1p)	✓	✓	✓	✓	✓
Spanning tree	STP, RSTP, MSTP	STP, RSTP, MSTP	STP, RSTP, MSTP	STP, RSTP, MSTP	STP, RSTP, MSTP
Multicast (IGMP)	v1, v2, v3	v1, v2, v3	v1, v2, v3	v1, v2, v3	v1, v2, v3
SNMP	v1, v2c, v3	v1, v2c, v3	v1, v2c, v3	v1, v2c, v3	v1, v2c, v3
Fan	Smart fan	Smart fans	Smart fans	Smart fans	Smart fans
Power supply	Internal	Internal	Internal	Internal	Internal
Mounting	Rack	Rack	Rack	Rack	Rack
Cloud	-	-	-	-	Hive compatible**
TAA compliant	✓	✓	✓	✓	✓
NDAA compliant	✓	✓	✓	✓	✓
Warranty	Lifetime*	Lifetime*	Lifetime*	Lifetime*	Lifetime*

# Multi-Gigabit Unmanaged Switches



	10G Unmanaged		2.5G Unmanaged with 10G		2.5G Unmanaged with 10G SFP+				
	TEG-S7102	TEG-S750	TEG-S591	TEG-S762	TEG-S50284	TEG-S50204	TEG-S5091	TEG-S5061	TEG-S562
Ports	8 x 10G, 2 x 10G SFP+	5 x 10G	8 x 2.5G, 1 x 10G	4 x 2.5G, 2 x 10G	24 x 2.5G, 4 x 10G SFP+	16 x 2.5G, 4 x 10G SFP+	8 x 2.5G, 1 x 10G SFP+	5 x 2.5G, 1 x 10G SFP+	4 x 2.5G, 2 x 10G SFP+
Switching capacity	200Gbps	100Gbps	60Gbps	60Gbps	200Gbps	160Gbps	60Gbps	45Gbps	60Gbps
Jumbo frames	12KB	12KB	12KB	12KB	12KB	12KB	12KB	12KB	12KB
RAM buffer	2MB	2MB	1MB	1MB	2MB	2MB	1MB	1MB	1MB
Forwarding rate (64-byte packet size)	144.8Mpps	74.4Mpps	44.64Mpps	44.64Mpps	59.52Mpps	119.04Mpps	44.64Mpps	33.8Mpps	44.64Mpps
MAC address table	32K	16K	4K	4K	32K	32K	4K	4K	4K
Fan	Smart fan	Fanless	Fanless	Fanless	Fanless	Fanless	Fanless	Fanless	Fanless
Power supply	Internal	External	External	External	Internal	Internal	External	External	External
Mounting	Rack	Wall	Wall	Wall	Rack	Rack	Wall	Wall	Wall
TAA/NDAA compliant	✓	✓	✓	✓	✓	✓	✓	✓	✓
Warranty	Lifetime*	Lifetime*	Lifetime*	Lifetime*	Lifetime*	Lifetime*	Lifetime*	Lifetime*	Lifetime*



	2.5G Unmanaged				Gigabit with 10G SFP+	2.5G PoE++	2.5G Unmanaged PoE+		
	TEG-S3160	TEG-S380	TEG-S350	TEG-S327	TEG-30262	TPE-BG380	TPE-TG380	TPE-TG350	TPE-TG327
Ports	16 x 2.5G	8 x 2.5G	5 x 2.5G	2 x 2.5G, 5 x Gigabit	24 x Gigabit, 4 x 10G SFP+	8 x 2.5G PoE++	8 x 2.5G PoE+	5 x 2.5G PoE+	2 x 2.5G PoE+, 5 x Gigabit PoE+
PoE power budget	-	-	-	-	-	230W	100W	55W	70W
Max. power per port	-	-	-	-	-	95W	30W	30W	30W
Switching capacity	80Gbps	40Gbps	25Gbps	20Gbps	88Gbps	40Gbps	40Gbps	25Gbps	20Gbps
Jumbo frames	12KB	12KB	12KB	15KB	10KB	12KB	12KB	12KB	15KB
RAM buffer	1.5MB	1.5MB	1.5MB	384KB	1.5MB	1MB	1.5MB	1.5MB	384KB
Forwarding rate (64-byte packet size)	59.52Mpps	29.76Mpps	18.6Mpps	14.88Mpps	65.5Mpps	29.76Mpps	29.76Mpps	18.6Mpps	14.88Mpps
MAC address table	16K	4K	4K	2K	16K	4K	16K	16K	2K
Fan	Fanless	Fanless	Fanless	Fanless	Fanless	Fanless	Fanless	Fanless	Fanless
Power supply	External	External	External	External	Internal	External	External	External	External
Mounting	Rack, Wall	Wall	Wall	Wall	Rack	Wall	Wall	Wall	Wall
TAA/NDAA compliant	✓	✓	✓	✓	✓	✓	✓	✓	✓
Warranty	Lifetime*	Lifetime*	Lifetime*	Lifetime*	Lifetime*	Lifetime*	Lifetime*	Lifetime*	Lifetime*

\*See warranty policy at TRENDnet.com.

⊘ Not available in Europe / UK.

# Multi-Gigabit Network Adapters & SFP+ Modules

See more Multi-Gigabit Fiber solutions in the Fiber section.



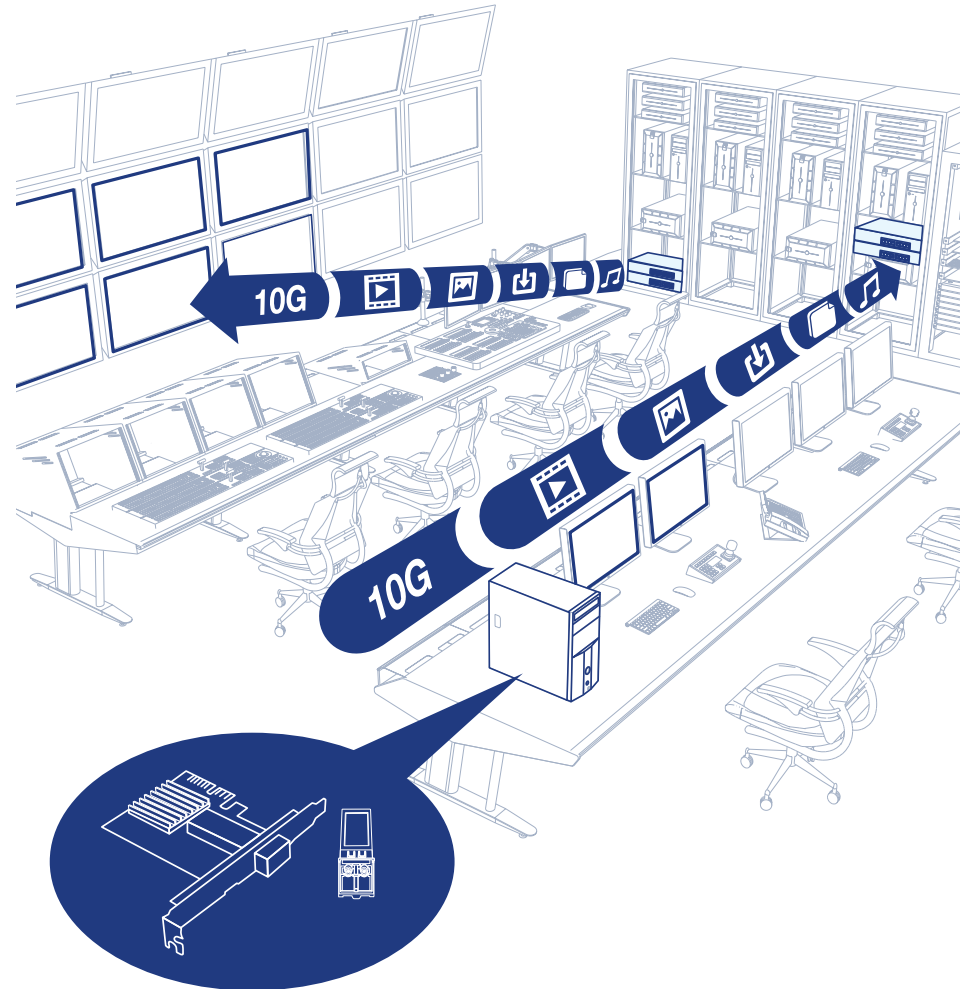
## Multi-Gigabit Network Adapters

	TEG-10GECTX	TEG-10GECSFP	TEG-25GECTX
Ports	1 x 10G BASE-T	1 x 10G SFP+	1 x 2.5GBASE-T
Speed	10Gbps, 2.5Gbps, 1Gbps	10Gbps	2.5Gbps, 1Gbps, 100Mbps
Features	Includes standard and low-profile brackets		
Form connector	PCIe 3.0 x 4	PCIe 2.0 x 4	PCIe 2.0 x 1
802.1Q VLAN	✓	✓	✓
Jumbo frames	16KB	16KB	9KB
OS compatibility	Windows®, Windows Server®		
TAA compliant	✓	✓	✓
NDA compliant	✓	✓	✓
Warranty	3-year	3-year	3-year



## 10G SFP+ Modules

	TEG-10GBS40	TEG-10GBS20	TEG-10GBS10	TEG-10GBSR	TEG-10GBRJ
Distance	40km (24.9 mi.)	20km (12.4 mi.)	10km (6.2 mi.)	550m (1804 ft.)	30m (98 ft.)
Interface	Duplex LC	Duplex LC	Duplex LC	Duplex LC	RJ-45
Speed	10G	10G	10G	10G	10G
Mode	Single	Single	Single	Multi	Copper
Digital Diagnostics Monitoring (DDM)	✓	✓	✓	✓	✓
Wavelength	1550nm	1310nm	1310nm	850nm	-
TAA/NDA compliant	✓	✓	✓	✓	✓
Warranty	Lifetime*	Lifetime*	Lifetime*	Lifetime*	Lifetime*



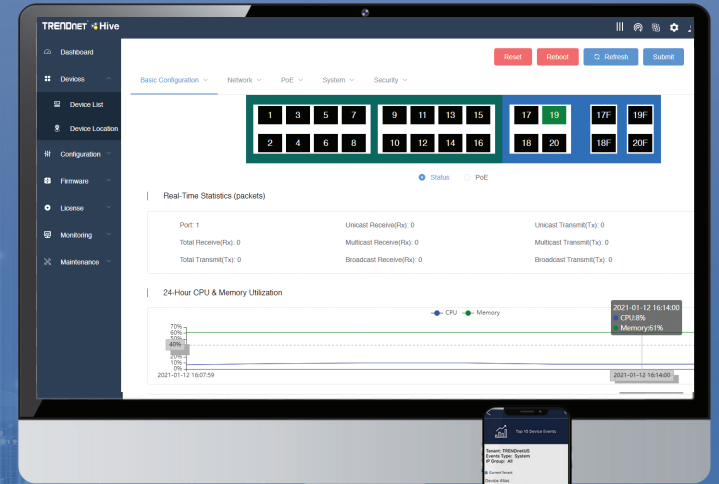
TEG-10GECSFP + TEG-10GBSR





## Network Cloud Manager

- Centralized management
- Hassle-free remote monitoring
- Intuitive alerts and notifications
- Reduce management time and costs
- Easily scalable for future expansions & upgrades
- Free mobile app support



Learn more and sign up at [trendnet.com/hive](https://trendnet.com/hive)

# Managed Web Smart Switches



Web Smart				
	TEG-524WS	TEG-284WS	TEG-204WS	TEG-082WS
Ports	48 x Gigabit, 4 x Shared Gigabit (RJ-45/SFP)	24 x Gigabit, 4 x Shared Gigabit (RJ-45/SFP)	16 x Gigabit, 4 x Shared Gigabit (RJ-45/SFP)	8 x Gigabit, 2 x SFP
Switching capacity	104Gbps	56Gbps	40Gbps	20Gbps
Jumbo frames	10KB	10KB	10KB	10KB
RAM buffer	1.5MB	512KB	512KB	512KB
Forwarding rate (64-byte packet size)	77.4Mpps	41.7Mpps	29.8Mpps	14.9Mpps
MAC address table	16K	8K	8K	8K
VLAN	Asymmetric, port-based, 802.1Q, private, voice, GVRP			
ACL	IPv4 L2-L4 & IPv6	IPv4 L2-L4 & IPv6	IPv4 L2-L4 & IPv6	IPv4 L2-L4 & IPv6
IPv6	✓	✓	✓	✓
Static IP routing	✓	✓	✓	✓
DoS prevention	✓	✓	✓	✓
802.1ab LLDP	✓	✓	✓	✓
802.1X	✓	✓	✓	✓
LACP (802.3ad)	✓	✓	✓	✓
CoS (802.1p)	✓	✓	✓	✓
Spanning tree	STP, RSTP, MSTP	STP, RSTP, MSTP	STP, RSTP, MSTP	STP, RSTP, MSTP
Multicast (IGMP)	v1, v2, v3	v1, v2, v3	v1, v2, v3	v1, v2, v3
SNMP	v1, v2c, v3	v1, v2c, v3	v1, v2c, v3	v1, v2c, v3
Fan	Fanless	Fanless	Fanless	Fanless
Power supply	Internal	Internal	Internal	External
Mounting	Rack	Rack	Rack	Rack
Cloud management	Hive compatible**	Hive compatible**	Hive compatible**	Hive compatible**
TAA/NDAA compliant	✓	✓	✓	✓
Warranty	Lifetime*	Lifetime*	Lifetime*	Lifetime*



## Gigabit Metal

	TEG-S24g	TEG-S24Dg	TEG-S25	TEG-S25D	TEG-S16g	TEG-S16Dg	TEG-S17	TEG-S17D
Ports	24 x Gigabit	24 x Gigabit	24 x Gigabit	24 x Gigabit	16 x Gigabit	16 x Gigabit	16 x Gigabit	16 x Gigabit
Switching capacity	48Gbps	48Gbps	48Gbps	48Gbps	32Gbps	32Gbps	32Gbps	32Gbps
Jumbo frames	10KB	10KB	9KB	9KB	10KB	10KB	9KB	9KB
RAM buffer	512KB	512KB	512KB	512KB	512KB	512KB	512KB	512KB
MAC address table	8K	8K	8K	8K	8K	8K	8K	8K
Fan	Fanless	Fanless	Fanless	Fanless	Fanless	Fanless	Fanless	Fanless
Power supply	Internal	Internal	Internal	Internal	Internal	Internal	Internal	Internal
Mounting	Rack	ETH-11MK**	Rack	Rack	Rack	ETH-11MK**	Rack	Rack
GREENnet	✓	✓	-	-	✓	✓	-	-
TAA/NDAA compliant	✓	✓	✓	✓	✓	✓	✓	✓
Warranty	Lifetime*	Lifetime*	Lifetime*	Lifetime*	Lifetime*	Lifetime*	Lifetime*	Lifetime*



## Gigabit Metal

## Gigabit Splitter

## 10/100 Plastic

	TEG-S82g	TEG-S80g	TEG-S83	TEG-S51SFP	TEG-S50g	TEG-S51	TEG-102S	TE100-S8
Ports	8 x Gigabit	8 x Gigabit	8 x Gigabit	5 x Gigabit, 1 x SFP	5 x Gigabit	5 x Gigabit	1 x Gigabit data-in, 2 x Gigabit data-out, 1 x USB Type C power-in	8 x 10/100Mbps
Switching capacity	16Gbps	16Gbps	16Gbps	12Gbps	10Gbps	10Gbps	4Gbps	1.6Gbps
Jumbo frames	9KB	9KB	9KB	9KB	9KB	9KB	9KB	-
RAM buffer	192KB	192KB	192KB	192KB	128KB	128KB	128KB	56KB
MAC address table	4K	4K	4K	2K	2K	2K	2K	1K
Fan	Fanless	Fanless	Fanless	Fanless	Fanless	Fanless	Fanless	Fanless
Power supply	External	External	External	External	External	External	USB Type C	External
Mounting	Wall	Wall	-	Wall	Wall	-	-	-
GREENnet	✓	✓	-	-	✓	-	-	✓
TAA compliant	✓	✓	✓	✓	✓	✓	✓	-
NDAA compliant	✓	✓	✓	✓	✓	✓	✓	✓
Warranty	Lifetime*	Lifetime*	Lifetime*	Lifetime*	Lifetime*	Lifetime*	2 year	3-year

\*See warranty policy at TRENDnet.com.

\*\*Sold separately.

⊘ Not available in Europe / UK.



# Managed PoE Switches



	Web Smart PoE++	Gigabit Web Smart PoE+			
	TPE-1020SB	TPE-5048WS	TPE-5240WS	TPE-5028WS	TPE-1284S
Ports	8 x Gigabit PoE++, 2 x Gigabit SFP	48 x Gigabit PoE+, 4 x Shared Gigabit (RJ-45/SFP)	48 x Gigabit PoE+, 4 x Shared Gigabit (RJ-45/SFP)	24 x Gigabit PoE+, 4 x Shared Gigabit (RJ-45/SFP)	24 x Gigabit PoE+, 4 x Shared Gigabit (RJ-45/SFP)
PoE budget	180W	740W	370W	370W	200W
Max. power per port	95W	30W	30W	30W	30W
Switching capacity	20Gbps	104Gbps	104Gbps	56Gbps	56Gbps
Jumbo frames	9KB	10KB	10KB	10KB	10KB
RAM buffer	512KB	1.5MB	1.5MB	512KB	4.1MB
Forwarding rate	14.88Mpps	77.4Mpps	77.4Mpps	41.7Mpps	41.66Mpps
MAC address table	8K	16K	16K	8K	8K
VLAN	802.1Q, dynamic GVRP, up to 256 VLAN groups, private, voice	Asymmetric, port-based, 802.1Q, private, voice, GVRP, multicast			Multiple management assignment, asymmetric, 802.1Q, dynamic GVRP, MAC-based, protocol-based, up to 256 VLAN groups, private, voice
ACL	IPv4 L2-L4 & IPv6	IPv4 L2-L4 & IPv6	IPv4 L2-L4 & IPv6	IPv4 L2-L4 & IPv6	IPv4 L2-L4 & IPv6
IPv6	✓	✓	✓	✓	✓
Static IP routing	✓	✓	✓	✓	✓
DoS prevention	✓	✓	✓	✓	✓
802.1ab LLDP	✓	✓	✓	✓	✓
802.1X	✓	✓	✓	✓	✓
LACP (802.3ad)	✓	✓	✓	✓	✓
CoS (802.1p)	✓	✓	✓	✓	✓
Spanning tree	STP, RSTP, MSTP	STP, RSTP, MSTP	STP, RSTP, MSTP	STP, RSTP, MSTP	STP, RSTP, MSTP
Multicast (IGMP)	v1, v2, v3	v1, v2, v3	v1, v2, v3	v1, v2, v3	v1, v2, v3
SNMP	v1, v2c, v3	v1, v2c, v3	v1, v2c, v3	v1, v2c, v3	v1, v2c, v3
Fan	Smart fan	Smart fans	Smart fans	Smart fans	Smart fan
Power supply	Internal	Internal	Internal	Internal	Internal
Mounting	Rack	Rack	Rack	Rack	Rack
Cloud management	-	Hive compatible**	Hive compatible**	Hive compatible**	-
TAA/NDAA compliant	-	✓	✓	✓	✓
Warranty	Lifetime*	Lifetime*	Lifetime*	Lifetime*	Lifetime*

# Managed PoE+ Switches



## Gigabit Web Smart PoE+

## 10/100 Web Smart PoE+

	TPE-2840WS	TPE-1620WSF	TPE-1620WS	TPE-1021WS	TPE-082WS	TPE-224WS
Ports	24 x Gigabit PoE+, 4 x Shared Gigabit (RJ-45/SFP)	16 x Gigabit PoE+, 4 x Shared Gigabit (RJ-45/SFP)	16 x Gigabit PoE+, 4 x Shared Gigabit (RJ-45/SFP)	8 x Gigabit PoE+, 2 x SFP	8 x Gigabit PoE+, 2 x SFP	4 x 10/100Mbps PoE+, 20 x 10/100Mbps PoE, 2 x Gigabit, 2 x Shared Gigabit (RJ-45/SFP)
PoE budget	185W	370W	185W	130W	75W	193W
Max. power per port	30W	30W	30W	30W	30W	30W
Switching capacity	56Gbps	40Gbps	40Gbps	20Gbps	20Gbps	12.8Gbps
Jumbo frames	10KB	10KB	10KB	10KB	10KB	-
RAM buffer	512KB	512KB	512KB	512KB	512KB	512KB
Forwarding rate	41.7Mpps	29.8Mpps	29.8Mpps	14.9Mpps	14.9Mpps	9.5Mpps
MAC address table	8K	8K	8K	8K	8K	8K
VLAN	Asymmetric, port-based, 802.1Q, private, voice, GVRP, multicast					Asymmetric, port-based, 802.1Q, private, voice, GVRP
ACL	IPv4 L2-L4 & IPv6	IPv4 L2-L4 & IPv6	IPv4 L2-L4 & IPv6	IPv4 L2-L4 & IPv6	IPv4 L2-L4 & IPv6	IPv4 L2-L4 & IPv6
IPv6	✓	✓	✓	✓	✓	✓
Static IP routing	✓	✓	✓	✓	✓	✓
DoS prevention	✓	✓	✓	✓	✓	✓
802.1ab LLDP	✓	✓	✓	✓	✓	✓
802.1X	✓	✓	✓	✓	✓	✓
LACP (802.3ad)	✓	✓	✓	✓	✓	✓
CoS (802.1p)	✓	✓	✓	✓	✓	✓
Spanning tree	STP, RSTP, MSTP	STP, RSTP, MSTP	STP, RSTP, MSTP	STP, RSTP, MSTP	STP, RSTP, MSTP	STP, RSTP, MSTP
Multicast (IGMP)	v1, v2, v3	v1, v2, v3	v1, v2, v3	v1, v2, v3	v1, v2, v3	v1, v2, v3
SNMP	v1, v2c, v3	v1, v2c, v3	v1, v2c, v3	v1, v2c, v3	v1, v2c, v3	v1, v2c, v3
Fan	Smart fans	Smart fans	Smart fans	Fanless	Fanless	Smart fans
Power supply	Internal	Internal	Internal	Internal	External	Internal
Mounting	Rack	Rack	Rack	Rack	Rack	Rack
Cloud management	Hive compatible**	Hive compatible**	Hive compatible**	Hive compatible**	Hive compatible**	-
TAA/NDAA compliant	✓	✓	✓	✓	✓	✓
Warranty	Lifetime*	Lifetime*	Lifetime*	Lifetime*	Lifetime*	Lifetime*

\*See warranty policy at TRENDnet.com.

\*\*Additional fee applies.

Not available in UK.

Not available in Europe / UK.

Compatible with Hive.

# Smart Surveillance Switches



**ONVIF® Conformant**  
Profile Q



**PoE Self-Healing**  
PoE device  
auto-recovery &  
power scheduling



**Manage Cameras**  
from switch interface



**Real-Time Data**  
for monitoring &  
troubleshooting



**Extend PoE Signal**  
up to 656 ft./200m  
at 10Mbps



**Front Panel LED**  
displays PoE power  
statistics



## Gigabit Web Smart PoE+

	TPE-3018LS	TPE-3012LS
Ports	16 x Gigabit PoE+, 2 x Shared Gigabit (RJ-45/SFP)	8 x Gigabit PoE+, 2 x Gigabit, 2 x SFP
PoE budget	220W	110W
Max. power per port	30W	30W
Switching capacity	36Gbps	24Gbps
Jumbo frames	10KB	10KB
RAM buffer	512KB	512KB
Forwarding rate	26.7Mpps	17.8Mpps
MAC address table	8K	8K
VLAN	Asymmetric, port-based, 802.1Q, private, voice, GVRP	
ACL	IPv4 L2-L4 & IPv6	IPv4 L2-L4 & IPv6
IPv6	✓	✓
Static IP routing	✓	✓
DoS prevention	✓	✓
802.1ab LLDP	✓	✓
802.1X	✓	✓
LACP (802.3ad)	✓	✓
CoS (802.1p)	✓	✓
Spanning tree	STP, RSTP, MSTP	STP, RSTP, MSTP
Multicast (IGMP)	v1, v2, v3	v1, v2, v3
SNMP	v1, v2c, v3	v1, v2c, v3
Fan	Smart fan	Fanless
Power supply	Internal	Internal
Mounting	Rack	Rack
TAA/NDAA compliant	✓	✓
Warranty	Lifetime*	Lifetime*

\*See warranty policy at TRENDnet.com.

Not available in UK.



	Gigabit EdgeSmart PoE+			EdgeSmart PoE Powered
	TPE-TG262ES	TPE-TG182ES	TPE-TG82ES	TPE-P521ES
Ports	24 x Gigabit PoE+, 2 x Gigabit SFP	16 x Gigabit PoE+, 2 x Gigabit SFP	8 x Gigabit PoE+	1 x Gigabit PoE+ in, 2 x Gigabit PoE out, 2 x Gigabit
PoE budget	380W	240W	64W	18W (PoE+ in), 8W (PoE in)
Max. power per port	30W	30W	30W	18W
Switching capacity	52Gbps	36Gbps	16Gbps	10Gbps
Jumbo frames	10KB	10KB	9KB	9KB
RAM buffer	512KB	512KB	192KB	512KB
Forwarding rate	38.7Mpps	26.8Mpps	11.9Mpps	7.4Mpps
MAC address table	8K	8K	4K	2K
VLAN	Asymmetric, port-based, 802.1Q, private, voice			
ACL	-	-	-	-
IPv6	-	-	-	-
Static IP routing	-	-	-	-
DoS prevention	-	-	-	-
802.1ab LLDP	-	-	-	-
802.1X	-	-	-	-
LACP (802.3ad)	-	-	-	-
CoS (802.1p)	✓	✓	✓	✓
Spanning tree	STP, RSTP	STP, RSTP	STP, RSTP	STP, RSTP
Multicast (IGMP)	64 v1, v2, v3 W	v1, v2, v3	v1, v2, v3	v1, v2, v3
SNMP	v1, v2c	v1, v2c	v1, v2c	v1, v2c
Fan	Smart fans	Smart fan	Fanless	Fanless
Power supply	Internal	Internal	External	-
Mounting	Rack	Rack	Wall	Wall
TAA/NDAA compliant	✓	✓	✓	✓
Warranty	Lifetime*	Lifetime*	Lifetime*	Lifetime*

\*See warranty policy at TRENDnet.com.

 Not available in UK.

 Not available in Europe / UK.

# Unmanaged PoE Switches & PoE Solutions

	Long Range PoE+			Gigabit PoE++		High Power PoE+		PoE Powered
	TPE-LG80	TPE-TG51g	TPE-LG50	TPE-BG182g	TPE-BG102g	TPE-TG182F	TPE-TG80F	TPE-B541
Ports	8 x Gigabit PoE+	4 x Gigabit PoE+, 1 x Gigabit	4 x Gigabit PoE+, 1 x Gigabit	8 x Gigabit PoE++, 8 x Gigabit PoE+, 2 x SFP	4 x Gigabit PoE++, 4 x Gigabit PoE+, 2 x SFP	16 x Gigabit PoE+, 2 x Shared Gigabit (RJ- 45/SFP)	8 x Gigabit PoE+	1 x Gigabit PoE++, 4 x Gigabit PoE+
PoE budget	65W	60W	32W	440W	240W	440W	240W	60W
Max. power per port	30W	30W	30W	95W	95W	30W	30W	30W
Switching capacity	16Gbps	10Gbps	10Gbps	36Gbps	20Gbps	36Gbps	16Gbps	10Gbps
Jumbo frames	9KB	9KB	9KB	9KB	9KB	9KB	9KB	10KB
RAM buffer	192KB	128KB	128KB	512KB	512KB	512KB	192KB	512KB
MAC address table	4K	2K	2K	8K	8K	8K	4K	8K
Fans	Fanless	Fanless	Fanless	Fanless	Fanless	Smart fans	Fanless	Fanless
Power supply	External	External	External	Internal	Internal	Internal	Internal	Internal
Mounting	Wall	Wall	Wall	Rack	Rack	Rack	Rack	Wall
TAA/NDAA compliant	✓	✓	✓	✓	✓	✓	✓	✓
Warranty	Lifetime*	Lifetime*	Lifetime*	Lifetime*	Lifetime*	Lifetime*	Lifetime*	Lifetime*

PoE++ Injectors					PoE+ Injectors		Extenders			Splitters
TPE-319GI	TPE-318GI	TPE-219GI	TPE-119GI	TPE-117GI	TPE-315GI	TPE-115GI	TPE-BE200	TPE-E100	TPE-E110	TPE-104GS
10G PoE++ 90W	10G PoE++ 90W	2.5G PoE++ 95W	Gigabit PoE++ 95W	Gigabit PoE++ 60W	10G PoE+	Gigabit PoE+	Gigabit PoE++	Gigabit PoE+	Gigabit PoE++, Amplifier	Gigabit PoE
TAA/NDAA compliant	Plastic housing, TAA/NDAA compliant	TAA/NDAA compliant	TAA/NDAA compliant	TAA/NDAA compliant	TAA/NDAA compliant	TAA/NDAA compliant	TAA/NDAA compliant	TAA/NDAA compliant	TAA/NDAA compliant	TAA/NDAA compliant
Converts a network data signal into a PoE Ethernet connection							Extends a PoE network connection for up to 100m (328 ft.) without the use of a power adapter			Splits a PoE signal into separate data and power sources



# Unmanaged PoE Switches



	Gigabit PoE+						
	TPE-TG262	TPE-TG240g	TPE-TG182	TPE-TG160g	TPE-TG161H	TPE-TG80g	TPE-TG84
Ports	24 x Gigabit PoE+, 2 x Gigabit SFP	24 x Gigabit PoE+	16 x Gigabit PoE+, 2 x Gigabit SFP	16 x Gigabit PoE+	16 x Gigabit PoE+	8 x Gigabit PoE+	8 x Gigabit PoE+
PoE budget	380W	370W	240W	246W	120W	123W	120W
Max. power per port	30W	30W	30W	30W	30W	30W	30W
Switching capacity	52Gbps	48Gbps	36Gbps	32Gbps	32Gbps	16Gbps	16Gbps
Jumbo frames	10KB	10KB	9KB	10KB	10KB	9KB	9KB
RAM buffer	512KB	512KB	512KB	512KB	512KB	128KB	192KB
MAC address table	8K	8K	8K	8K	8K	4K	4K
Fans	2	Smart fans	1	Smart fans	Fanless	Fanless	Fanless
Power supply	Internal	Internal	Internal	Internal	External	External	External
Mounting	Rack	Rack	Rack	Rack	Rack	-	Wall
TAA/NDAA compliant	✓	✓	✓	✓	✓	✓	✓
Warranty	Lifetime*	Lifetime*	Lifetime*	Lifetime*	Lifetime*	Lifetime*	Lifetime*



	Gigabit PoE+					10/100 PoE+
	TPE-TG81g	TPE-TG83	TPE-TG611	TPE-TG52	TPE-TG50g	TPE-S50
Ports	8 x Gigabit PoE+	8 x Gigabit PoE+	4 x Gigabit PoE+, 1 x Gigabit, 1 x SFP	4 x Gigabit PoE+, 1 x Gigabit	4 x Gigabit PoE+, 1 x Gigabit	4 x 10/100Mbps PoE+, 2 x 10/100Mbps
PoE budget	110W	65W	65W	32W	31W	60W
Max. power per port	30W	30W	30W	30W	30W	30W
Switching capacity	16Gbps	16Gbps	12Gbps	10Gbps	10Gbps	1.2Gbps
Jumbo frames	9KB	9KB	9KB	9KB	16KB	15KB
RAM buffer	192KB	192KB	128KB	128KB	128KB	96KB
MAC address table	4K	4K	2K	2K	8K	2K
Fans	Fanless	Fanless	Fanless	Fanless	Fanless	Fanless
Power supply	Internal	External	External	External	External	Internal
Mounting	Rack	Wall	Wall	Wall	Wall	Wall
TAA compliant	✓	✓	✓	✓	✓	-
NDAA compliant	✓	✓	✓	✓	✓	✓
Warranty	Lifetime*	Lifetime*	Lifetime*	Lifetime*	Lifetime*	Lifetime*

\*See warranty policy at TRENDnet.com.

Not available in Europe / UK.

# IP Power Distribution



Switched PDU

TPI-06

Description	Smart Power Strip
Outlets	6 management outlets, 1 outlet (Always On / not manageable)
Outlet type	NEMA 5-15R
Features	Rear facing ports, detachable power cord
Metered outlets	✓
Surge protection	✓
Protection modes	L-N, L-G, N-G
Peak impulse current	45,000A
Line voltage	100 ~ 120V, 50 - 60 Hz
Fuse type	Thermal Fuse
Cloud management	Hive compatible*
Power supply	Internal
Mounting	Rack
TAA/NDAA compliant	✓
Warranty	3-year

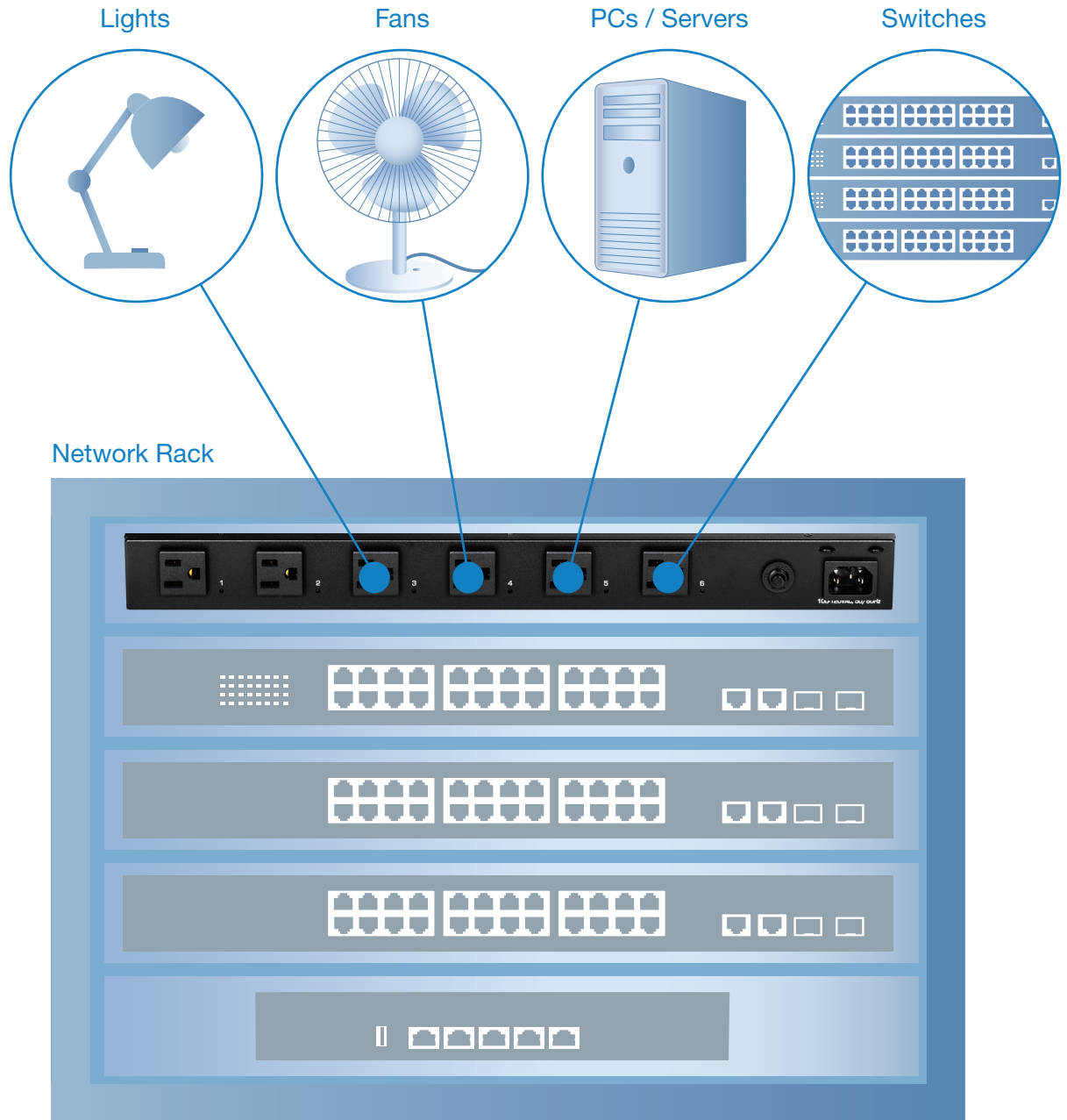




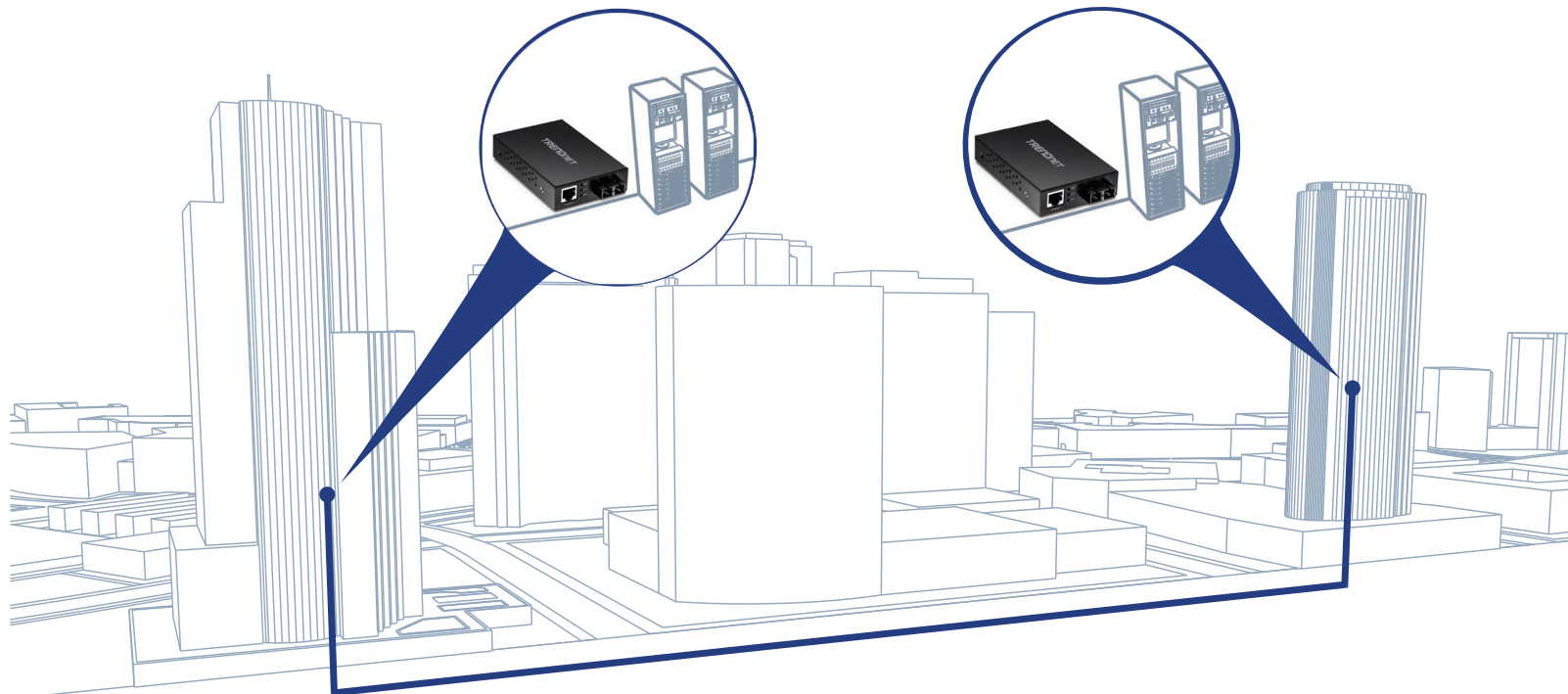


IMAGE NOT AVAILABLE



## Fiber Media Converters

	TFC-10GSFP	TFC-G21SFP	TFC-GSFP	TFC-PGSFP	TFC-GMSC
Description	10GBASE-T to SFP+ Fiber Media Converter	Gigabit to Dual SFP Redundant Fiber Media Converter	1000BASE-T to SFP Fiber Media Converter	Gigabit PoE PD SFP Fiber Media Converter	1000Base-T to 1000Base-SX Multi-Mode SC Fiber Converter
Distance	Based on SFP	Based on SFP	Based on SFP	Based on SFP	550m / 1800 ft.
Speed	10G	Gigabit	Gigabit	Gigabit	Gigabit
Mode	Single, Multi	Single, Multi	Single, Multi	Single, Multi	Multi
Connector	SFP	SFP	SFP	SFP	Duplex SC
Wavelength	Based on SFP	Based on SFP	Based on SFP	Based on SFP	850nm
TAA/NDA compliant	✓	✓	✓	✓	✓
Warranty	3-year	3-year	3-year	3-year	3-year



# SFP Modules



## Gigabit SFPs

## 10/100 SFPs

	TEG-MGBS80	TEG-MGBS40	TEG-MGBS20	TEG-MGBS10	TEG-MGBSX	TEG-MGBRJ	TE100-MGBS20	TE100-MGBFX
Distance	80km / 49.7 mi.	40km / 24.8 mi.	20km / 12.4 mi.	10km / 6.2 mi.	550m / 1,804 ft.	100m / 328 ft.	20km / 12.4 mi.	2km / 1.2 mi.
Interface	Duplex LC	Duplex LC	Duplex LC	Duplex LC	Duplex LC	RJ-45	Duplex LC	Duplex LC
Speed	Gigabit	Gigabit	Gigabit	Gigabit	Gigabit	Gigabit	10/100	10/100
Mode	Single	Single	Single	Single	Multi	Copper	Single	Multi
Wavelength	1550nm	1310nm	1310nm	1310nm	850nm	-	1310nm	1310nm
TAA/NDA compliant	✓	✓	✓	✓	✓	✓	✓	✓
Warranty	Lifetime*	Lifetime*	Lifetime*	Lifetime*	Lifetime*	Lifetime*	Lifetime*	Lifetime*



## Gigabit WDM SFPs

	TEG-MGBS40D5	TEG-MGBS40D3	TEG-MGBS20D5	TEG-MGBS20D3	TEG-MGBS10D5	TEG-MGBS10D3
Distance	40km / 24.8 mi.	40km / 24.8 mi.	20km / 12.4 mi.	20km / 12.4 mi.	10km / 6.2 mi.	10km / 6.2 mi.
Interface	Simplex LC	Simplex LC	Simplex LC	Simplex LC	Simplex LC	Simplex LC
Speed	Gigabit	Gigabit	Gigabit	Gigabit	Gigabit	Gigabit
Mode	Single	Single	Single	Single	Single	Single
WDM	✓	✓	✓	✓	✓	✓
Wavelength	TX: 1550nm, RX: 1310nm	TX: 1310nm, RX: 1550nm	TX: 1550nm, RX: 1310nm	TX: 1310nm, RX: 1550nm	TX: 1550nm, RX: 1310nm	TX: 1310nm, RX: 1550nm
TAA/NDA compliant	✓	✓	✓	✓	✓	✓
Warranty	Lifetime*	Lifetime*	Lifetime*	Lifetime*	Lifetime*	Lifetime*

# Industrial Managed Switches



## Industrial L2 Managed

	TI-RG262i	TI-G160i	TI-G160i-M	TI-G102i	TI-G642i
Ports	24 x Gigabit, 2 x SFP	16 x Gigabit	16 x Gigabit	8 x Gigabit, 2 x SFP	4 x Gigabit, 2 x SFP
Switching capacity	52Gbps	32Gbps	32Gbps	20Gbps	12Gbps
Jumbo frames	10KB	10KB	10KB	10KB	10KB
RAM buffer	512KB	512KB	512KB	512KB	512KB
Forwarding rate	38.7Mpps	23.8Mpps	23.8Mpps	14.88Mpps	8.92Mpps
MAC address table	8K	8K	8K	8K	8K
VLAN	802.1Q, MAC-based, port isolation, up to 256 VLAN groups	Port-based, 802.1Q, MAC-based, port isolation	Port-based, 802.1Q, MAC-based, port isolation	Port-based, 802.1Q, MAC-based, port isolation	Port-based, 802.1Q, MAC-based, port isolation
ACL	-	IPv4 L2-L4	IPv4 L2-L4	IPv4 L2-L4	IPv4 L2-L4
IPv6	-	-	-	-	-
Static IP routing	-	✓	✓	✓	✓
DoS Prevention	-	✓	✓	✓	✓
802.1ab LLDP	✓	✓	✓	✓	✓
802.1X	✓	✓	✓	✓	✓
LACP (802.3ad)	✓	✓	✓	✓	✓
CoS (802.1p)	✓	✓	✓	✓	✓
Spanning tree	STP, RSTP, MSTP	STP, RSTP, MSTP	STP, RSTP, MSTP	STP, RSTP, MSTP	STP, RSTP, MSTP
ERPS	v2	✓	✓	✓	✓
Multicast (IGMP)	v1, v2, v3	v1, v2, v3	v1, v2, v3	v1, v2, v3	v1, v2, v3
SNMP	v1, v2c, v3	v1, v2c, v3	v1, v2c, v3	v1, v2c, v3	v1, v2c, v3
Operating temp.	-40° – 70° C (-40° – 158° F)	-40° – 75° C (-40° – 167° F)	-10° – 75° C (14° – 167° F)	-40° – 75° C (-40° – 167° F)	-40° – 75° C (-40° – 167° F)
Housing	IP30	IP40	IP30	IP40	IP40
Power supply	TI-S15052**	TI-S15052, TI-S24052, TI-S12048**	TI-S15052, TI-S24052, TI-S12048**	TI-S15052, TI-S24052, TI-M6024**	TI-S15052, TI-S24052, TI-M6024**
Mounting	Rack	DIN-Rail	DIN-Rail	DIN-Rail	DIN-Rail
TAA/NDAA compliant	✓	✓	✓	✓	✓
Warranty	Lifetime*	Lifetime*	Lifetime*	Lifetime*	Lifetime*

\*See warranty policy at TRENDnet.com.

\*\*Power supply required.

Not available in UK.

# Industrial Managed PoE Switches



	L2+ PoE++	Industrial L2 Managed PoE+			
	TI-BG62i	TI-RP262i	TI-PG1284i	TI-PG102i	TI-PG541i
Ports	4 x Gigabit PoE++, 2 x SFP	24 x Gigabit PoE+, 2 x SFP	8 x Gigabit PoE+, 4 x Gigabit SFP, 1 x Console	8 x Gigabit PoE+, 2 x Gigabit SFP	4 x Gigabit PoE+, 1 x Gigabit, 1 x SFP
PoE budget	360W	685W	240W	240W @ 48V input, 124W @ 24V input	120W
Max. power per port	95W	30W	30W	30W	30W
Switching capacity	12Gbps	52Gbps	24Gbps	20Gbps	12Gbps
Jumbo frames	10KB	10KB	10KB	10KB	10KB
RAM buffer	1.5MB	512KB	1.5MB	512KB	512KB
Forwarding rate	8.9Mpps	38.7Mpps	17.86Mpps	14.8Mpps	8.93Mpps
MAC address table	16K	8K	16K	8K	8K
VLAN	802.1Q, port-based, MAC-based, Q-in-Q VLAN, port isolation	Port-based, 802.1Q, MAC-based, port isolation	802.1Q, port-based, MAC-based, Q-in-Q VLAN, port isolation	Port-based, 802.1Q, MAC-based, port isolation	Port-based, 802.1Q, MAC-based, port isolation
ACL	IPv4 L2-L4	IPv4 L2-L4	IPv4 L2-L4	IPv4 L2-L4	IPv4 L2-L4
IPv6	IPv6 static IP address, DHCPv6 client	-	IPv6 static IP address, DHCPv6 client	-	-
Static IP routing	✓	✓	✓	✓	✓
DoS Prevention	✓	✓	✓	✓	✓
802.1ab LLDP	✓	✓	✓	✓	✓
802.1X	✓	✓	✓	✓	✓
LACP (802.3ad)	✓	✓	✓	✓	✓
CoS (802.1p)	✓	✓	✓	✓	✓
Spanning tree	STP, RSTP, MSTP	STP, RSTP, MSTP	STP, RSTP, MSTP	STP, RSTP, MSTP	STP, RSTP, MSTP
ERPS	✓	✓	✓	✓	✓
Multicast (IGMP)	v1, v2, v3	v1, v2, v3	v1, v2, v3	v1, v2, v3	v1, v2, v3
SNMP	v1, v2c, 3	v1, v2c, 3	v1, v2c, 3	v1, v2c, 3	v1, v2c, 3
Operating temp.	-40° – 75° C (-40° – 167° F)	-40° – 70° C (-40° – 158° F)	-40° – 75° C (-40° – 167° F)	-40° – 75° C (-40° – 167° F)	-40° – 75° C (-40° – 167° F)
Housing	IP40	IP30	IP40	IP40	IP40
Power supply	TI-S15052, TI-S24052, TI-S48048**	TI-S15052, TI-S24052, TI-RSP100048**	TI-S15052, TI-S24052, TI-S48048**	TI-S15052, TI-S24052, TI-S48048**	TI-S15052, TI-S24052, 48VDC3000, TI-S24048**
Mounting	DIN-Rail	Rack	DIN-Rail	DIN-Rail, Wall	DIN-Rail
TAA/NDAA compliant	✓	✓	✓	✓	✓
Warranty	Lifetime*	Lifetime*	Lifetime*	Lifetime*	Lifetime*



# Industrial Unmanaged Switches



	Industrial 2.5G			Industrial Gigabit							Industrial 10/100	
	TI-G5091	TI-G50611	TI-G5062	TI-G262	TI-G162	TI-G102	TI-G80	TI-G50	TI-G62	TI-G51SC	TI-E80	TI-E50
Ports	8 x 2.5G, 1 x 10G SFP+	4 x 2.5G, 1 x 10G RJ-45, 1 x 10G SFP+	4 x 2.5G, 2 x 10G SFP+	24 x Gigabit, 2 x Gigabit SFP	14 x Gigabit, 2 x Gigabit SFP	8 x Gigabit, 2 x Shared Gigabit (RJ-45/SFP)	8 x Gigabit	5 x Gigabit	4 x Gigabit, 1 x SFP, 1 x Shared Gigabit (RJ-45/SFP)	4 x Gigabit, 1 x Gigabit Multi- Mode SC	8 x 10/100Mbps	5 x 10/100Mbps
Switching capacity	60Gbps	60Gbps	60Gbps	52Gbps	32Gbps	20Gbps	16Gbps	10Gbps	12Gbps	10Gbps	1.6Gbps	1Gbps
Jumbo frames	12KB	12KB	12KB	9KB	9KB	10KB	9KB	9KB	9KB	9KB	-	-
RAM buffer	1MB	1MB	1MB	512KB	512KB	256KB	128KB	128KB	128KB	48KB	56KB	56KB
MAC address table	4K	4K	4K	8K	8K	16K	8K	8K	2K	2K	1K	1K
Operating temp.	-40° – 75° C (-40° – 167° F)			-40° – 75° C (-40° – 167° F)							-40° – 75° C (-40° – 167° F)	
Housing	IP50	IP50	IP50	IP30	IP30	IP30	IP50	IP50	IP50	IP50	IP50	IP50
Power supply	TI-M6024, 48VDC3000**			TI-M6024, TI-S15052**	TI-S15052, TI-S24052, TI-M6024**					TI-M6024, TI-S15052, 48VDC3000**	TI-S15052, TI-S24052, TI-M6024**	
Mounting	DIN-Rail, Wall	DIN-Rail, Wall	DIN-Rail, Wall	DIN-Rail, Wall	DIN-Rail, Wall	DIN-Rail, Wall	DIN-Rail, Wall	DIN-Rail, Wall	DIN-Rail, Wall	DIN-Rail, Wall	DIN-Rail, Wall	DIN-Rail, Wall
TAA/NDAA compliant	✓	✓	✓	✓	✓	✓	✓	✓	✓	✓	✓	✓
Warranty	Lifetime*	Lifetime*	Lifetime*	Lifetime*	Lifetime*	Lifetime*	Lifetime*	Lifetime*	Lifetime*	Lifetime*	Lifetime*	Lifetime*

\*See warranty policy at TRENDnet.com.

\*\*Power supply required.

# Industrial Unmanaged PoE Switches



	Industrial 2.5G PoE++		Industrial Gigabit PoE++			PoE Powered	Industrial Gigabit PoE+			
	TI-BG5091	TI-BG50611	TI-BG108	TI-BG104	TI-UPG62	TI-B541	TI-RP262	TI-PG262	TI-PG160	TI-PG162
Ports	8 x 2.5G PoE++, 1 x 10G SFP+	4 x 2.5G PoE++, 1 x 10G SFP+, 1 x 10G	8 x Gigabit PoE++, 2 x Shared Gigabit (RJ-45 / SFP)	4 x Gigabit PoE++, 4 x Gigabit PoE+, 2 x Shared Gigabit (SFP or RJ-45)	4 x Gigabit PoE++, 1 x Gigabit, 2 x SFP	4 x Gigabit PoE++ input, 1 x Gigabit PoE+ output	24 x Gigabit PoE+, 2 x Gigabit SFP	16 x Gigabit PoE+, 8 x Gigabit, 2 x Gigabit SFP	16 x Gigabit PoE+	14 x Gigabit PoE+, 2 x Gigabit SFP
PoE budget	480W	240W	400W	360W	240W	65W	685W	480W	240W	240W
Max. power per port	95W	95W	95W	90W	90W	90W	30W	30W	30W	30W
Switching capacity	60Gbps	60Gbps	20Gbps	20Gbps	12Gbps	10Gbps	52Gbps	52Gbps	32Gbps	32Gbps
Jumbo frames	12KB	12KB	10KB	10KB	9KB	9KB	9KB	9KB	9KB	9KB
RAM buffer	1MB	1MB	256KB	256KB	128KB	128KB	512KB	512KB	512KB	512KB
MAC address table	4K	4K	11K	11K	1K	2K	8K	8K	8K	8K
Operating temp.	-40° – 75° C (-40° – 167° F)	-40° – 75° C (-40° – 167° F)	-40° – 75° C (-40° – 167° F)	-40° – 75° C (-40° – 167° F)	-40° – 75° C (-40° – 167° F)	-40° – 75° C (-40° – 167° F)	-40° – 75° C (-40° – 167° F)	-40° – 75° C (-40° – 167° F)	-40° – 75° C (-40° – 167° F)	-40° – 75° C (-40° – 167° F)
Housing	IP50	IP50	IP50	IP30	IP30	IP50	IP30	IP30	IP30	IP30
Power supply	TI-S48048, TI-S24052, 48VDC3000**	TI-S48048, TI-S24052, 48VDC3000**	TI-S48048, TI-S24052**	TI-S15052, TI-S24052, TI-S24048, TI-S48048**	TI-S15052, TI-S24052, TI-S48048**	-	TI-S48048**, TI-RSP100048	TI-S48048**	TI-S15052, TI-S24052, TI-S48048**	TI-S15052, TI-S24052, TI-S48048**
Mounting	Din-Rail, Wall	Din-Rail, Wall	Din-Rail, Wall	DIN-Rail, Wall	DIN-Rail, Wall	DIN-Rail, Wall	Rack	DIN-Rail, Wall	DIN-Rail, Wall	DIN-Rail, Wall
TAA/NDAA compliant	✓	✓	✓	✓	✓	✓	-	✓	✓	✓
Warranty	Lifetime*	Lifetime*	Lifetime*	Lifetime*	Lifetime*	Lifetime*	Lifetime*	Lifetime*	Lifetime*	Lifetime*

# Industrial Unmanaged PoE+ Switches



	Industrial Gigabit PoE+							Industrial 10/100 PoE+	
	TI-PG102	TI-PGM102	TI-PG80	TI-PG62	TI-PG541	TI-PG50	TI-PGM541	TI-PE80	TI-PE50
Ports	8 x Gigabit PoE+, 2 x Shared Gigabit (RJ-45/SFP)	8 x Gigabit PoE+, 2 x Gigabit SFP	8 x Gigabit PoE+	4 x Gigabit PoE+, 1 x SFP, 1 x Shared Gigabit (RJ-45/SFP)	4 x Gigabit PoE+, 1 x Gigabit, 1 x SFP	4 x Gigabit PoE+, 1 x Gigabit	4 x Gigabit PoE+, 1 x Gigabit SFP	8 x 10/100Mbps PoE+	4 x 10/100Mbps PoE+, 1 x 10/100Mbps
PoE budget	240W	240W	200W	120W	120W	120W	120W	200W	90W
Max. power per port	30W	30W	30W	30W	30W	30W	30W	30W	30W
Switching capacity	20Gbps	20Gbps	16Gbps	12Gbps	12Gbps	10Gbps	10Gbps	1.6Gbps	1Gbps
Jumbo frames	10KB	9KB	9KB	9KB	10KB	9KB	9KB	-	-
RAM buffer	256KB	181KB	128KB	128KB	512KB	128KB	8KB	128KB	56KB
MAC address table	16K	4K	8K	1K	8K	2K	2K	1K	1K
Operating temp.	-40° – 75° C (-40° – 167° F)	-20° – 65° C (-4° – 149° F)	-40° – 75° C (-40° – 167° F)	-40° – 75° C (-40° – 167° F)	-40° – 75° C (-40° – 167° F)	-40° – 75° C (-40° – 167° F)	-20° – 65° C (-4° – 149° F)	-40° – 75° C (-40° – 167° F)	-40° – 75° C (-40° – 167° F)
Housing	IP30	IP30	IP50	IP50	IP40	IP50	IP30	IP50	IP50
Power supply	TI-S15052, TI-S24052, 48VDC3000, TI-S24048**	TI-S15052, TI-S24052, TI-S24048**	TI-S15052, TI-S24052, TI-S24048**	TI-S15052, TI-S24052, 48VDC3000, TI-S12048, TI-S24048**	TI-S15052, TI-S24052, 48VDC3000, TI-S12048, TI-S24048**	TI-S15052, TI-S24052, TI-S12048**, TI-S24048**	TI-S15052, TI-S24052, TI-S12048**	TI-S15052, TI-S24052, TI-S24048**	TI-S15052, TI-S24052, TI-M6024, TI-S12048**
Mounting	DIN-Rail, Wall	DIN-Rail, Wall	DIN-Rail, Wall	DIN-Rail, Wall	DIN-Rail	DIN-Rail, Wall	DIN-Rail, Wall	DIN-Rail, Wall	DIN-Rail, Wall
TAA/NDAA compliant	✓	✓	✓	✓	✓	✓	✓	✓	✓
Warranty	Lifetime*	Lifetime*	Lifetime*	Lifetime*	Lifetime*	Lifetime*	Lifetime*	Lifetime*	Lifetime*

\*See warranty policy at TRENDnet.com.

\*\*Power supply required.

# Industrial Specialty Switches



	Variable Voltage			Front Access				EN50155 M12	
	TI-BG5091B	TI-PG80B	TI-PG62B	TI-PG102F	TI-PG80F	TI-PG62F	TI-PG50F	TI-XPG102	TI-XPG50
Ports	8 x 2.5G PoE++, 1 x 10G SFP+	8 x Gigabit PoE+	4 x Gigabit PoE+, 2 x SFP	8 x Gigabit PoE+, 2 x SFP	8 x Gigabit PoE+	4 x Gigabit PoE+, 2 x Gigabit SFP	4 x Gigabit PoE+, 1 x Gigabit	8 x M12 Gigabit PoE+, 2 x M12 Gigabit	4 x M12 Gigabit PoE+, 1 x M12 Gigabit
PoE budget	480W	120W – 200W	60 – 120W	240W	200W	120W	120W	200W	120W@56V DC
Max. power per port	95W	30W	30W	30W	30W	30W	30W	30W	30W
Switching capacity	60Gbps	16Gbps	12Gbps	20Gbps	16Gbps	12Gbps	10Gbps	20Gbps	10Gbps
Jumbo frames	12KB	9KB	9KB	10KB	9KB	10KB	9KB	9KB	9KB
RAM buffer	1MB	128KB	128KB	256KB	128KB	128KB	128KB	512KB	128KB
MAC address table	4K	4K	1K	16K	4K	1K	2K	8K	2K
Operating temp.	-40° – 75° C (-40° – 167° F)			-40° – 75° C (-40° – 167° F)				-40° – 75° C (-40° – 167° F)	
Housing	IP50	IP50	IP50	IP30	IP30	IP30	IP30	IP40	IP67
Power supply	TI-S48048, TI-S24052, 48VDC3000**	TI-S15052, TI-S24052, TI-S24048, TI-S12024**	TI-S15052, TI-S24052, TI-S12024, TI-S12048**	TI-S15052, TI-S24052, TI-S24048, TI-S48048, 48VDC3000**		TI-S15052, TI-S24052, TI-S12048, TI-S24048, 48VDC3000**		TI-S24052**	TI-S15052**
Mounting	Din-Rail, Wall	DIN-Rail, Wall	DIN-Rail, Wall	DIN-Rail, Wall	DIN-Rail, Wall	DIN-Rail, Magnet	DIN-Rail, Wall	Wall	DIN-Rail, Wall
TAA/NDAA compliant	✓	✓	✓	✓	✓	✓	✓	✓	✓
Warranty	Lifetime*	Lifetime*	Lifetime*	Lifetime*	Lifetime*	Lifetime*	Lifetime*	Lifetime*	Lifetime*





IMAGE NOT AVAILABLE



### Injectors

	TI-IG290	TI-O119GI	TI-IG90	TI-IG60	TI-IG30
Description	2-Port 2.5G PoE++	Gigabit PoE++	Gigabit PoE++	Gigabit UPoE	Gigabit PoE+
PoE budget	180W	95W	90W	60W	30W
Operating temp.	-40° – 75° C (-40° – 167° F)			-40° – 75° C (-40° – 167° F)	
Housing	IP30	IP67	IP30	IP30	IP30
Power supply	TI-S15052, TI-S24052, TI-S24048**	-	TI-S15052, TI-S24052, TI-S12048**	TI-S15052, TI-S24052, TI-S12048**	TI-S15052, TI-S24052, TI-S12048**
Mounting	DIN-Rail, Wall	Wall	DIN-Rail, Wall	DIN-Rail, Wall	DIN-Rail, Wall
TAA/NDAA compliant	✓	✓	✓	✓	✓
Warranty	3-year	3-year	3-year	3-year	3-year



### Extenders

### Splitter

	TI-EU120	TI-BE200	TI-BEP200	TI-OE110	TI-E100	TI-SG104
Description	2-Port Gigabit PoE++	2-Port Gigabit PoE++	2-Port Gigabit Active/Passive PoE+	Gigabit PoE+	Gigabit PoE+	Gigabit PoE++
PoE budget	75W	60W	60W	26W	30W	-
Operating temp.	-40° – 75° C (-40° – 167° F)			-40° – 75° C (-40° – 167° F)		-40° – 75° C (-40° – 167° F)
Housing	IP67	IP67	IP67	IP67	IP30	IP30
Power supply	PD power input: 30W, 60W, 95W	PoE++	PoE++	TI-S15052, TI-S24052, TI-S12048**-	TI-S15052, TI-S24052, TI-S12048**-	DC output: 12V, 16V, 24V, 48V
Mounting	Wall	Wall	Wall	DIN-Rail, Wall	DIN-Rail, Wall	DIN-Rail, Wall
TAA/NDAA compliant	✓	✓	✓	✓	✓	✓
Warranty	3-year	3-year	3-year	3-year	3-year	3-year

\*\*Power supply required.

# Industrial Fiber



	Industrial Gigabit Fiber Converters			Industrial 100Mbps Fiber Converters	
	TI-UF11SFP	TI-PF11SFP	TI-F11SFP	TI-F10S30	TI-F10SC
Description	SFP to Gigabit UPoE	SFP to Gigabit PoE+	100/1000BASE-T to SFP	100BASE-FX Single-Mode SC	100BASE-FX Multi-Mode SC
Distance	Based on SFP	Based on SFP	Based on SFP	30km (18.6 mi.)	2km (1.2 mi.)
Fiber mode	Based on SFP	Based on SFP	Based on SFP	Single	Multi
Fiber connector	SFP	SFP	SFP	Duplex SC	Duplex SC
PoE budget	60W	30W	-	-	-
Wavelength	Based on SFP	Based on SFP	Based on SFP	1310nm	1310nm
Operating temp.	-40° – 75° C (-40° – 167° F)	-40° – 75° C (-40° – 167° F)	-40° – 75° C (-40° – 167° F)	-40° – 75° C (-40° – 167° F)	-40° – 75° C (-40° – 167° F)
Housing	IP50	IP50	IP50	IP50	IP50
Power supply	TI-S15052, TI-S24052, TI-S12048**	TI-S15052, TI-S24052, TI-S12048**	TI-S15052, TI-S24052, TI-M6024**	TI-S15052, TI-S24052, TI-M6024**	TI-S15052, TI-S24052, TI-M6024**
Mounting	DIN-Rail, Wall	DIN-Rail, Wall	DIN-Rail, Wall	DIN-Rail, Wall	DIN-Rail, Wall
TAA/NDAA compliant	✓	✓	✓	✓	✓
Warranty	3-year	3-year	3-year	Lifetime*	Lifetime*



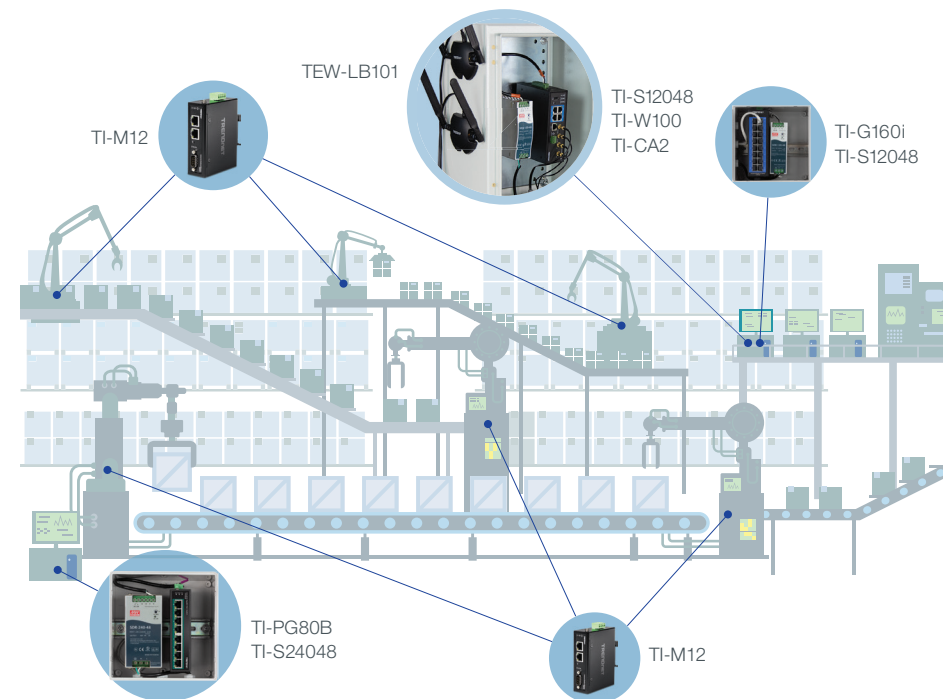
	Industrial SFP Modules				
	TI-MGBS40	TI-MGBS20	TI-MGBS10	TI-MGBSX	TI-MGBRJ
Distance	40km / 24.8 mi.	20km / 12.42 mi.	10km / 6.2 mi.	550m / 1,804 ft.	100m / 328 ft.
Interface	Duplex LC	Duplex LC	Duplex LC	Duplex LC	RJ-45
Speed	Gigabit	Gigabit	Gigabit	Gigabit	Gigabit
Fiber mode	Single (40km)	Single	Single (10km)	Multi (550m)	Copper
Wavelength	1310nm	1310nm	1310nm	850nm	-
Operating temp.	-40°– 85° C (-40° – 185° F)	-40°– 85° C (-40° – 185° F)	-40°– 85° C (-40° – 185° F)	-40°– 85° C (-40° – 185° F)	-40°– 85° C (-40° – 185° F)
TAA/NDAA compliant	✓	✓	✓	✓	✓
Warranty	Lifetime*	Lifetime*	Lifetime*	Lifetime*	Lifetime*



	Industrial PoE+ Router	Industrial Router
	TI-WP100	TI-W100
Wireless rating	AC1200	AC1200
Max. data rate / WiFi band	867Mbps (AC) + 300Mbps (N)	867Mbps (AC) + 300Mbps (N)
Ports	4 x Gigabit PoE+, 1 x Gigabit WAN	4 x Gigabit, 1 x Gigabit WAN
PoE budget	120W	-
Max. power per port	30W	-
Features	802.11ac dual band WiFi, PoE+, VPN router, Multi-WAN (Ethernet & WiFi), Modbus	802.11ac dual band WiFi, VPN router, Multi-WAN (Ethernet & WiFi), Modbus
VPN	IPsec, SSL VPN	IPsec, SSL VPN
Multi-WAN	Fail-over, load balancing	Fail-over, load balancing
Access controls	MAC filter, DMZ, Port Forwarding, SPI, IPS	MAC filter, DMZ, Port Forwarding, SPI, IPS
Management	HTTP / HTTPS, Telnet / SSH	HTTP / HTTPS, Telnet / SSH
VLAN	802.1Q VLAN, Inter-VLAN routing, multiple SSID w/ VLAN tagging	802.1Q VLAN, Inter-VLAN routing, multiple SSID w/ VLAN tagging
Scheduling	Auto power cycle, radios on/off	Auto power cycle, radios on/off
Operating temp.	-30° – 70° C (-22° – 158° F)	-30° – 70° C (-22° – 158° F)
Housing	IP30	IP30
Mounting	DIN-Rail	DIN-Rail
Power supply	TI-S15052, TI-S24052, TI-S12048, TI-S12024, TI-S24048**	TI-M6024**
Antenna base	TEW-LB101***	TEW-LB101***
TAA/NDAA compliant	✓	✓
Warranty	3-year	3-year



	Industrial Modbus Gateways	
	TI-M42	TI-M12
Ports	4 x Serial (DB-9), 2 x 10/100Mbps	1 x Serial (DB-9), 2 x 10/100Mbps
Serial connections	RS-232, RS-422, RS-485	RS-232, RS-422, RS-485
Operating temp.	-40° – 75° C (-40° – 167° F)	-40° – 75° C (-40° – 167° F)
Housing	IP30	IP30
Power supply	TI-S15052, TI-S24052, TI-M6024, 48VDC3000**	TI-S15052, TI-S24052, TI-M6024, 48VDC3000**
Mounting	DIN-Rail, Wall	DIN-Rail, Wall
TAA/NDAA compliant	✓	✓
Warranty	Lifetime*	Lifetime*



\*See warranty policy at TRENDnet.com.

\*\*Power supply required.

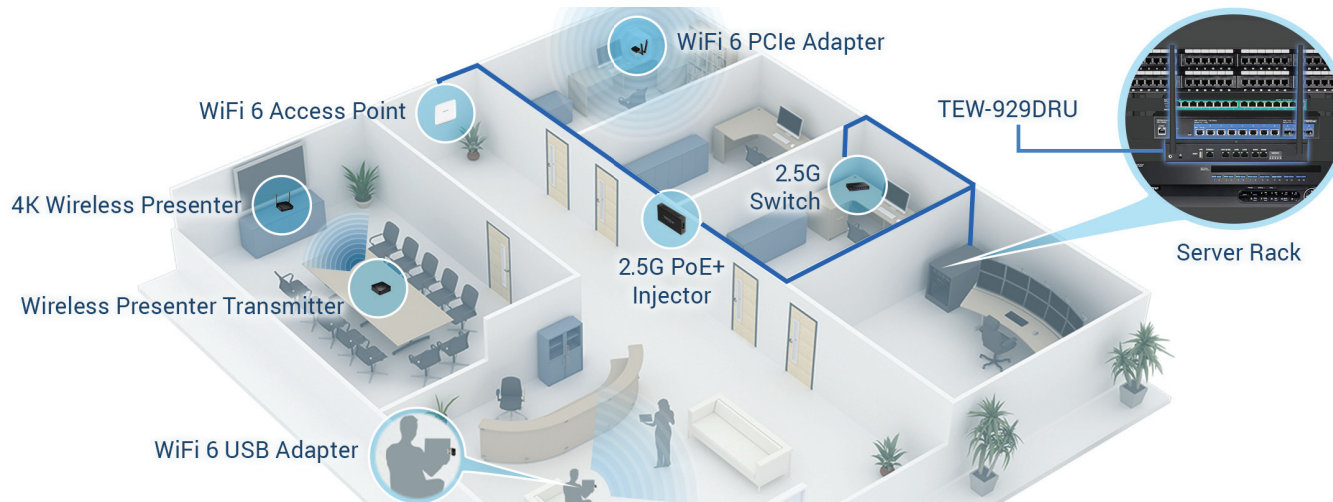
\*\*\*Sold separately.

Not available in UK.

# SMB Routers



	WiFi		Wired	
	TEW-929DRU	TEW-829DRU	TWG-531BR	TWG-431BR
Wireless rating	AX1800	AC3000	-	-
Max. data rate / WiFi band	1201Mbps (5GHz) + 574Mbps (2.4GHz)	1733Mbps (5GHz1) + 867Mbps (5GHz2) + 400Mbps (2.4GHz)	-	-
Ports	1 x 2.5G LAN, 2 x Gigabit LAN, 2 x Gigabit WAN, 1 x USB 2.0, 1 x RJ-45 Console	8 x Gigabit LAN, 2 x Gigabit WAN, 1 x USB 3.0, 1 x RJ-45 Console	4 x 2.5G, 1 x 10G SFP+, 1 x USB 3.0, 1 x RJ-45 Console	5 x Gigabit (4WAN + 1LAN OR 4LAN + 1WAN), 1 x USB 3.0, 1 x RJ-45 Console
Features	Bark*, Multi-WAN, VPN router, rack mountable, wall mountable	Multi-WAN, VPN router, rack mountable, wall mountable	Bark*, Multi-WAN, VPN router	Multi-WAN, VPN router, rack mountable
VPN	PPTP / L2TP, L2TP w/ IPsec, IPsec, SSL VPN	PPTP / L2TP, L2TP w/ IPsec, IPsec, SSL VPN	PPTP / L2TP, L2TP w/ IPsec, IPsec, SSL VPN	PPTP / L2TP, L2TP w/ IPsec, IPsec, SSL VPN
Multi-WAN	Fail-over, load balancing, WAN protocol binding	Fail-over, load balancing, WAN protocol binding	Fail-over load balancing	Fail-over, load balancing
Access controls	Bark*, MAC / IP filter, DMZ / Port Forwarding / One-to-One NAT	MAC / IP filter, DMZ / Port Forwarding / One-to-One NAT	MAC / IP filter, DMZ / Port Forwarding	MAC / IP filter, DMZ / Port Forwarding
Management	HTTP / HTTPS, Telnet / SSH, Console	HTTP / HTTPS, Telnet / SSH, Console	HTTP / HTTPS, Telnet / SSH, Console	HTTP / HTTPS, Telnet / SSH, Console
VLAN	802.1Q VLAN / Inter-VLAN routing; multiple SSID w/ VLAN tagging	802.1Q VLAN / Inter-VLAN routing; multiple SSID w/ VLAN tagging	802.1Q VLAN / Inter-VLAN routing; multiple SSID w/ VLAN tagging	802.1Q VLAN / Inter-VLAN routing
Scheduling	Auto power cycle, auto update, radios on/off	Auto power cycle, auto update, radios on/off	Auto power cycle, auto update, radios on/off	Auto power cycle, auto update, WoL
TAA compliant	✓	✓	✓	-
NDA compliant	✓	✓	✓	✓
Warranty	3-year	3-year	3-year	3-year





# Indoor PoE Access Points



	Indoor					
	TEW-925DAP	TEW-923DAP	TEW-826DAP	TEW-825DAP	TEW-823DAP	TEW-821DAP
Features	WiFi 6 AX5400	WiFi 6 AX3000	Wireless Wave 2 AC2200	Wireless AC1750	Wireless AC1300	Wireless Wave 2 AC1200
Max. data rate / WiFi band	4800Mbps / 5GHz 574Mbps / 2.4GHz	2402Mbps / 5GHz 574Mbps / 2.4GHz	867Mbps / 5GHz AC1 867Mbps / 5GHz AC2 400Mbps / 2.4GHz N	1300Mbps / 5GHz AC 450Mbps / 2.4GHz N	867Mbps / 5GHz AC 400Mbps / 2.4GHz N	867Mbps / 5GHz AC 300Mbps / 2.4GHz N
Ports	1 x 2.5G PoE+	1 x 2.5G PoE+	1 x Gigabit PoE+, 1 x Gigabit	1 x Gigabit PoE+	1 x Gigabit PoE	1 x Gigabit PoE
Antenna strength	2.4GHz: 2 x 4.5 dBi 5GHz: 2 x 5 dBi	2.4GHz: 2 x 4.5 dBi 5GHz: 2 x 5.5 dBi	2.4GHz: 2 x 4 dBi 5GHz1: 2 x 4 dBi 5GHz2: 2 x 4 dBi	2.4GHz: 3 x 4 dBi 5GHz: 3 x 4 dBi	2.4GHz: 2 x 3 dBi 5GHz: 2 x 4 dBi	2.4GHz: 2 x 3 dBi 5GHz: 2 x 4 dBi
Cloud management	Hive compatible*	Hive compatible*	Hive compatible*	Hive compatible*	-	Hive compatible*
Wireless Distribution System (WDS)	-	-	✓	✓	✓	✓
Repeater mode	✓	✓	✓	✓	✓	✓
Client mode	AP Client	AP Client	AP Client	AP Client	AP Client	AP Client
Additional SSIDs	16 (8 per band)	16 (8 per band)	24 (8 per band)	16 (8 per band)	16 (8 per band)	16 (8 per band)
Max. encryption	WPA3	WPA3	WPA2	WPA2	WPA2	WPA2
Operating temp.	0° – 40° C (32° – 104° F)	0° – 40° C (32° – 104° F)	0° – 40° C (32° – 104° F)	0° – 40° C (32° – 104° F)	0° – 40° C (32° – 104° F)	0° – 40° C (32° – 104° F)
Mounting hardware	✓	✓	✓	✓	✓	✓
Housing	-	-	-	-	-	IP30
TAA/NDAA compliant	✓	✓	✓	✓	✓	✓
Warranty	3-year	3-year	3-year	3-year	3-year	3-year

\*Additional fee applies.

Not available in Canada.

Not available in UK.

Not available in Europe / UK.

Compatible with Hive.

# Outdoor PoE Access Points



Outdoor								
	TEW-941APBO	TEW-940APBO	TEW-940APBO2K	TEW-841APBO	TEW-840APBO	TEW-840APBO2K	TEW-740APBO	TEW-740APBO2K
Features	Wireless AX1800, Omni-Directional, Point-to-Point, Point-to-Multi-Point	Wireless AX1200, Point-to-Point / CPE	Wireless AX1200, Preconfigured, Point-to-Point, Bridge Kit	Wireless AC1300, Omni-Directional, Point-to-Point, Point-to-Multi-Point	Wireless AC867, Point-to-Point / CPE	Wireless AC867, Preconfigured, Point-to-Point, Bridge Kit	Wireless N300, Point-to-Point / CPE	Wireless N300, Preconfigured, Point-to-Point, Bridge Kit
Max. data rate / WiFi band	1201Mbps / 5GHz AX 867Mbps / 5GHz AC 573Mbps / 2.4GHz AX 300Mbps / 2.5GHz N	1201Mbps / 5GHz AX 867Mbps / 5GHz AC 300Mbps / 5GHz N		867Mbps / 5GHz AC 400Mbps / 2.4GHz N	867Mbps / 5GHz AC		300Mbps / 2.4GHz N	
Ports	1 x 2.5G PoE+	1 x Gigabit Proprietary PoE, 1 x Gigabit LAN2		1 x Gigabit PoE+	1 x Gigabit Proprietary PoE, 1 x Gigabit LAN2		1 x 10/100Mbps Proprietary PoE, 1 x 10/100Mbps LAN2	
Antenna strength	2.4GHz: 2 x 5 dBi 5GHz: 2 x 5 dBi	14 dBi directional	14 dBi directional	4 x 5 dBi	14 dBi directional		10 dBi directional	
Wireless Distribution System (WDS)	-	-	-	✓	✓		✓	
Repeater mode	✓	✓	✓	-	-		-	
Client mode	Client Bridge	Client Bridge	Client Bridge	Client Bridge	Client Bridge + AP, WISP (CPE) + AP		Client Bridge + AP, WISP (CPE) + AP	
Additional SSIDs	16 (8 per band)	8	8	16 (8 per band)	7		7	
Max. encryption	WPA3	WPA3	WPA3	WPA2	WPA2		WPA2	
Operating temp.	-22° – 60° C (-7.6° – 140° F)	-22° – 60° C (-7.6° – 140° F)		-25° – 60° C (-13° – 140° F)	-20° – 60° C (-4° – 140° F)		-20° – 60° C (-4° – 140° F)	
Mounting hardware	✓	✓	✓	✓	✓		✓	
Housing	IP67	IP55	IP55	IP67	IP56		IPX6	
TAA/NDAA compliant	✓	✓	✓	✓	✓		✓	
Warranty	3-year	3-year	3-year	3-year	3-year		3-year	



	Fixed Dome Camera	Fixed Turret Camera
	TV-IP1515PI	TV-IP1514PI
Features	5MP HD H.265 w/ Night Vision	5MP HD H.265 w/ Night Vision
Connectivity	PoE	PoE
Free app	Sentinel mobile app for Android™ or iOS™	Sentinel mobile app for Android™ or iOS™
Free software	Manage up to 144 TRENDnet cameras with View Manager	Manage up to 144 TRENDnet cameras with View Manager
Housing	IP66	IP66
Compression	H.265, H.264	H.265, H.264
Max. resolution	2592 x 1920	2592 x 1920
Image sensor	1/2.7" CMOS	1/2.7" CMOS
Lens	3.6mm @ F1.6	3.6mm @ F1.6
Viewing angle	106°	106°
Zoom	-	-
Audio support	Built-in microphone	Built-in microphone
Vision	Night vision up to 30m (98 ft.)	Night vision up to 30m (98 ft.)
Pan & tilt	Fixed position: Manually pan 355° & tilt 75°	-
Network	IPv4, IPv6	IPv4, IPv6
ONVIF	Profile S	Profile S
Power consumption	6W max.	5.5W max.
Micro SD slot	✓ (up to 256GB)	✓ (up to 256GB)
Operating temp.	-30° – 50° C (-22° – 122° F)	-30° – 50° C (-22° – 122° F)
Hardware	Mounting hardware included	Mounting hardware included
TAA/NDAA compliant	✓	✓
Warranty	3-year	3-year

	H.265 4K PoE NVR
	TV-NVR1508
Features	Advanced camera viewing, recording, and playback
Channels	8
PoE budget	60W
Hard drive	1 × 3.5 HDD up to 10TB
Video interface	1 x HDMI, 1 x VGA
USB ports	-
Recording time*	Over one month of continuous 1080p HD recording
Viewing modes	1, 4, 8, 9
PTZ support	✓
Audio support	✓
Web GUI interface	✓
Export file type	H.265, H.264
Mobile app	✓
Compatible cameras	Compatible with TRENDnet & third-party PoE cameras
Mounting	Rack
TAA/NDAA compliant	✓
Warranty	2 year

\* Based on maximum camera channels and maximum storage capacity.

Not available in UK.

### MoCA®



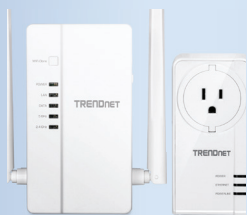
Ethernet Over Coax Adapters

### Home Wireless



Mesh Routers · Routers  
USB Adapters  
Bluetooth® Adapters

### Powerline



Powerline Adapters  
WiFi Powerline Adapters

See  
TRENDnet's  
full product line  
online at  
[www.trendnet.com](http://www.trendnet.com)

### KVMs



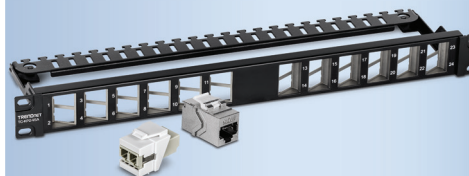
Rackmount · Desktop · DisplayPort  
KVM Extenders · HDMI  
VGA · Video Splitters  
USB Share Switch

### USB & USB-C



Network Adapters · Hubs  
RS-232 Serial Converters

### Patch Panels



Shielded · Unshielded · Modular  
Angled · Wall Mount  
Keystone Jacks

## Headquarters Address

20675 Manhattan Place  
Torrance, CA 90501  
USA

[www.TRENDnet.com](http://www.TRENDnet.com)

Main Phone Number

310-961-5500

[info@trendnet.com](mailto:info@trendnet.com)



Toll Free Number

888-326-6061

## Department

North America Sales  
(US, Canada, UK)

Extension 1

[sales@trendnet.com](mailto:sales@trendnet.com)

International Sales

Extension 2

[intlsales@trendnet.com](mailto:intlsales@trendnet.com) (EMEA, APAC)  
[latam@trendnet.com](mailto:latam@trendnet.com) (LATAM)

Marketing

[marketing@trendnet.com](mailto:marketing@trendnet.com)

Customer Service

Extension 3

Online Feedback System  
[www.trendnet.com/company/feedback/](http://www.trendnet.com/company/feedback/)

Pre-Sales

Extension 4

Technical Support

866-845-3673

Online Help Desk Ticket System  
[www.trendnet.com/support/helpdesk](http://www.trendnet.com/support/helpdesk)

All references to speed are for comparison purposes only. Product specifications, size, and shape are subject to change without notice, and actual product appearance may differ from that depicted herein. Some information may have changed since the printing of this catalog. For the latest product information and to view our complete product line, please visit our website. © Copyright 2024 TRENDnet, Inc. All Rights Reserved.



