

TRENDNET[®]

— PRODUCT CATALOG —



SWITCHES - PoE - INDUSTRIAL - WIRELESS - SURVEILLANCE - FIBER - POWERLINE - KVM - USB

| | | | |
|--------------------------------------|-------------------|--|--------------|
| About TRENDnet | 3 | SMB Wireless | 24 |
| Switches | 5 | Indoor & Outdoor Access Points | |
| TRENDnet Hive, Network Cloud Manager | | Wireless Presentation System | |
| Unmanaged Switches | | TRENDnet Hive, Network Cloud Manager | See Switches |
| Multi-Gigabit: 2.5G/5G/10G | 9 | Surveillance | 27 |
| Web Smart & Unmanaged Switches | | IP Cameras / Network Cameras | |
| Network Adapters | | Network Video Recorders | |
| 10G SFP+ Modules | | Fiber | 31 |
| PoE | 13 | Powerline | 33 |
| Managed & Unmanaged Switches | | Routers & Adapters..... | 34 |
| Smart Surveillance Switches | | KVM..... | 35 |
| Long Range & High-Power PoE Switches | | USB-C & USB..... | 37 |
| Injectors / Splitters / Extenders | | Contact TRENDnet | 38 |
| Multi-Gigabit PoE Switches | See Multi-Gigabit | | |
| Access Points | See SMB Wireless | | |
| IP Cameras & NVRs | See Surveillance | | |
| Industrial | 18 | | |
| Managed & Unmanaged Switches | | | |
| Front Access & EN50155 Switches | | | |
| Fiber Media Converters & SFP Modules | | | |
| Wireless Routers | | | |
| Modbus Gateways | | | |

TRENDnet's vision is to build innovative, easy-to-use, and reliable Networks People Trust™. TRENDnet solutions network countless devices to enable your connected lifestyle and workplace. Building award-winning networking solutions since 1990, TRENDnet connects you with what you value most. Founded in Torrance, California, TRENDnet has grown to become a leading global networking hardware brand.





TRENDnet[®]

Price-to-Performance Leader

Multi-Award-Winning Product Line

Demonstrated Reliability

Exceptional Product Quality

Comprehensive Customer Support

Pre-Sales Engineering Support

Experienced Technical Support Team

Français:

La vision de TRENDnet est de construire des réseaux novateurs, simples à utiliser et fiables sur lesquels les gens peuvent compter. Les solutions de TRENDnet mettent en réseaux d'innombrables périphériques qui simplifient votre style de vie et votre travail en ligne. En créant depuis 1990 des solutions de mise en réseau primées, TRENDnet vous connecte avec ce que vous avez de plus précieux. Fondé à Torrance, Californie, TRENDnet a grandi pour devenir une marque internationale de matériel, leader de la mise en réseau. TRENDnet est leader en matière de rapport qualité/prix, avec une ligne de produits primés, une fiabilité démontrée, une qualité de produits exceptionnelle, un service clientèle complet, une assistance en soutien en ingénierie d'avant-vente et des services d'assistance technique de premier plan.

Deutsch:

TRENDnet hat es sich zum Ziel gesetzt, innovative, einfach zu verwendende und zuverlässige Netzwerke zu erstellen, denen die Kunden vertrauen (Networks People Trust™). Die Lösungen von TRENDnet vernetzen unzählige Geräte, um Ihnen ein verbundenes Leben und Arbeiten zu ermöglichen. TRENDnet schafft seit 1990 preisgekrönte Netzwerklösungen und verbindet Sie mit dem, was Ihnen am wichtigsten ist. Seit der Gründung in Torrance, Kalifornien, ist TRENDnet zu einer weltweit führenden Netzwerkhardwaremarke geworden. TRENDnet verfügt über ein führendes Preis-Leistungsverhältnis mit einer mehrfach ausgezeichneten Produktreihe und erwiesener Zuverlässigkeit, herausragender Produktqualität, umfassendem Kundendienst, Engineering-Unterstützung vor dem Verkauf und erstklassigem technischen Support.

Português:

O objetivo da TRENDnet é sempre criar redes inovadoras, fáceis de usar e confiáveis. Soluções de rede da TRENDnet são compostas por inúmeros dispositivos para garantir o seu estilo de vida e trabalho conectados. Com soluções de rede premiadas desde 1990, com a TRENDnet você se conecta com o que você mais valoriza. Fundada em Torrance, Califórnia, a TRENDnet cresceu e se tornou uma marca líder de dispositivos de rede. A TRENDnet é líder na relação custo-desempenho, com uma multipremiada linha de produtos, confiabilidade, excepcional qualidade dos produtos, suporte ao cliente, suporte pré-vendas e serviços de suporte técnico premium.

Español:

La visión de TRENDnet es crear redes innovadoras, de fácil uso y de confianza (Networks People Trust™). Las soluciones de TRENDnet conectan en red los numerosos dispositivos que le permiten mantener su modo de vida y de trabajo conectados. TRENDnet, con sus premiadas soluciones de red desde 1990, le conecta con lo que usted más valora. Fundada en Torrance, California, TRENDnet ha crecido hasta convertirse en una marca líder en el mundo en hardware de redes. TRENDnet es líder en la relación precio/rendimiento, con una línea de productos galardonada con múltiples premios, solidez contrastada, calidad excepcional en sus productos, soporte integral al cliente, soporte de ingeniería previo a la venta y servicios de soporte técnico de primera categoría.

Layer 2 Managed



Web Smart



Advanced Management

TRENDnet's Layer 2 switch solutions include premier managed features such as CLI, PoE control, access control lists, VLAN, IGMP snooping, QoS, RMON, SNMP trap, and syslog for monitoring and flexible network integration.

For more sophisticated networks, Web Smart switches support advanced management features such as traffic management controls, IP routing, VLAN, QoS, access controls, link aggregation, troubleshooting, SNMP monitoring, per port MAC restriction, and dynamic ARP inspection.

Français:

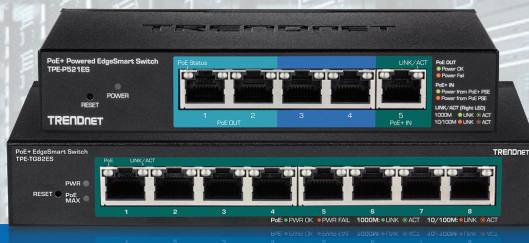
Les switches non gérés sont conçus pour augmenter simplement la densité des ports. Les switches EdgeSmart de TRENDnet offrent une gestion de l'interface graphique Web avec les fonctionnalités les plus courantes des switches gérés. Les switches Web Smart prennent en charge des fonctions plus avancées et les switches de couche 2 de TRENDnet incluent des fonctions de gestion de premier ordre pour une meilleure surveillance et une intégration réseau flexible.

Deutsch:

Unverwaltete Switches wurden entwickelt, um die Portdichte einfach zu erhöhen. Die EdgeSmart-Switches von TRENDnet ermöglichen Web-GUI-Verwaltung mit den gängigsten Funktionen verwalteter Switches. Web-Smart-Switches unterstützen erweiterte Funktionen, und die Layer-2-Switches von TRENDnet bieten erstklassige verwaltete Funktionen für bessere Überwachung und flexible NetzwerkinTEGRATION.

See more switches in the Multi-Gigabit, PoE, and Industrial sections.

EdgeSmart



Unmanaged



Unmanaged

TRENDnet's EdgeSmart switches feature web GUI management with just the most commonly used managed switch features such as VLAN, IGMP snooping, QoS, and link aggregation. This helps to reduce unnecessary switch complexity.

To help boost network efficiency and eliminate network congestion, unmanaged switches are designed to simply increase port density. Installation is plug and play with no special requirements or configuration needed.

Português:

Switches não gerenciados são projetados para simplesmente aumentar a densidade de portas. Os switches EdgeSmart da TRENDnet apresentam gerenciamento web GUI com os recursos mais comuns dos switches gerenciados. Os switches Web Smart suportam recursos mais avançados, e os switches Layer 2 da TRENDnet incluem gerenciamento dos principais recursos para um melhor monitoramento e integração da rede.

Español:

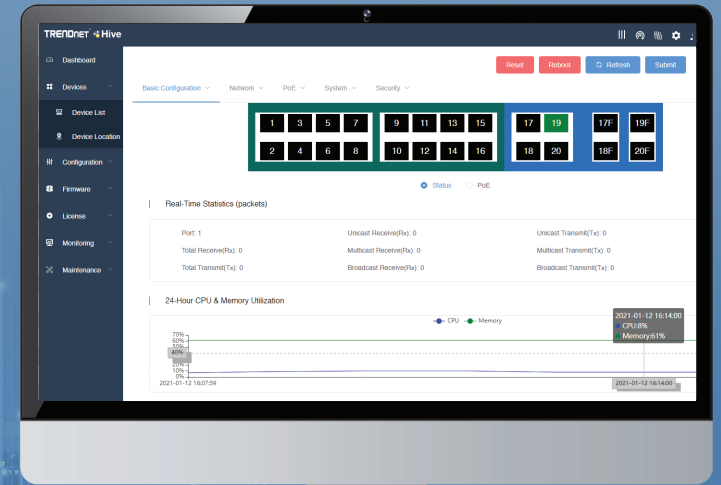
Los switches no administrados están diseñados para aumentar la densidad de puertos con facilidad. Los switches EdgeSmart de TRENDnet ofrecen administración GUI web con las funciones de switches administrados más frecuentes. Los switches Web Smart admiten funciones más avanzadas, y los switches de Capa 2 de TRENDnet ofrecen funciones administradas superiores para lograr una mejor monitorización y una integración de red flexible.

Hive Cloud Management

TRENDNET  **Hive**

Network Cloud Manager

- Centralized management
- Hassle-free remote monitoring
- Intuitive alerts and notifications
- Reduce management time and costs
- Easily scalable for future expansions & upgrades
- Free mobile app support



Learn more and sign up at trendnet.com/hive

Unmanaged Switches



Gigabit Unmanaged Metal

| | TEG-S25 | TEG-S24g | TEG-S25D | TEG-S24Dg | TEG-S17 | TEG-S16g | TEG-S17D | TEG-S16Dg |
|--------------------|--------------|--------------|--------------|--------------|--------------|--------------|--------------|--------------|
| Ports | 24 x Gigabit | 24 x Gigabit | 24 x Gigabit | 24 x Gigabit | 16 x Gigabit | 16 x Gigabit | 16 x Gigabit | 16 x Gigabit |
| Switching capacity | 48Gbps | 48Gbps | 48Gbps | 48Gbps | 32Gbps | 32Gbps | 32Gbps | 32Gbps |
| RAM buffer | 512KB | 512KB | 512KB | 512KB | 512KB | 512KB | 512KB | 512KB |
| MAC address table | 8K | 8K | 8K | 8K | 8K | 8K | 8K | 8K |
| Jumbo frames | 9KB | 10KB | 9KB | 10KB | 9KB | 10KB | 9KB | 10KB |
| GREENnet | - | ✓ | - | ✓ | - | ✓ | - | ✓ |
| Internal power | ✓ | ✓ | ✓ | ✓ | ✓ | ✓ | ✓ | ✓ |
| Mounting | Rack | Rack | Rack | ETH-11MK* | Rack | Rack | Rack | ETH-11MK* |
| TAA/NDA compliant | ✓ | ✓ | ✓ | ✓ | ✓ | ✓ | ✓ | ✓ |
| Warranty | 3 year | 3 year | 3 year | 3 year | 3 year | 3 year | 3 year | 3 year |



Gigabit Unmanaged Metal

10/100 Unmanaged Plastic

| | TEG-S83 | TEG-S82g | TEG-S80g | TEG-S51 | TEG-S50g | TEG-S51SFP | TE100-S5 |
|--------------------|-------------|-------------|-------------|-------------|-------------|----------------------|----------------|
| Ports | 8 x Gigabit | 8 x Gigabit | 8 x Gigabit | 5 x Gigabit | 5 x Gigabit | 4 x Gigabit, 1 x SFP | 5 x 10/100Mbps |
| Switching capacity | 16Gbps | 16Gbps | 16Gbps | 10Gbps | 10Gbps | 10Gbps | 1Gbps |
| RAM buffer | 192KB | 192KB | 192KB | 128KB | 128KB | 128KB | 56KB |
| MAC address table | 4K | 4K | 4K | 2K | 2K | 2K | 1K |
| Jumbo frames | 9KB | 9KB | 9KB | 9KB | 9KB | 9KB | - |
| GREENnet | - | ✓ | ✓ | - | ✓ | - | ✓ |
| Internal power | - | - | - | - | - | - | - |
| Mounting | - | Wall | Wall | - | Wall | Magnet | - |
| TAA compliant | ✓ | ✓ | ✓ | ✓ | ✓ | ✓ | - |
| NDA compliant | ✓ | ✓ | ✓ | ✓ | ✓ | ✓ | ✓ |
| Warranty | 3 year | 3 year | 3 year | 3 year | 3 year | 3 year | 3 year |

*Sold separately.

Multi-Gigabit Networking

TRENDnet's high-performance 10G, 5G, and 2.5G network solutions are built to support high-bandwidth network applications, helping to **reduce traffic-causing bottlenecks and improve network efficiency.** Well-suited for edge layer switching, our Multi-Gigabit switches, and 10G SFP+ solutions are used in a wide-array of SMB applications, including large scale surveillance networks and camera installations.



Français:

Les solutions réseau haute performance 10G et 2,5G de TRENDnet sont conçues pour prendre en charge les applications réseau à large bande passante, ce qui contribue à réduire les goulots d'étranglement et à améliorer l'efficacité du réseau. Bien adaptés à la commutation des couches marginales, nos switches Multi-Gigabit et nos solutions SFP+ 10G sont utilisés dans un large éventail d'applications pour les PME, notamment les réseaux de surveillance à grande échelle et les installations de caméras.

Deutsch:

Die leistungsstarken 10G- und 2,5G-Netzwerkösungen von TRENDnet unterstützen Netzwerkanwendungen mit hoher Bandbreite und helfen, Engpässe zu reduzieren und die Netzwerkeffizienz zu verbessern. Unsere Multi-Gigabit-Switches und 10G SFP+-Lösungen eignen sich hervorragend für den Einsatz in einer Vielzahl von SMB-Anwendungen, einschließlich großer Überwachungsnetzwerke und Kamerainstallationen.

Português:

As soluções de rede 10G e 2.5G de alto desempenho da TRENDnet foram desenvolvidas para suportar aplicações de rede que demandem uma grande largura de banda, ajudando a reduzir o gargalo e melhorar a eficiência da rede. Adequado para comutação na camada de borda, nossos switches Multi-Gigabit e soluções 10G SFP+ são usados em uma ampla gama de aplicações SMB, incluindo redes de vigilância em grande escala e instalações de câmeras.

Español:

Las soluciones de red de alto rendimiento 10G y 2.5G de TRENDnet están concebidas para admitir aplicaciones de red de alto ancho de banda, lo cual contribuye a reducir los cuellos de botella y aumenta la eficiencia de la red. Nuestros switches Multi-Gigabit y soluciones 10G SFP+ son ideales para conmutación en capa de extremo y se utilizan en un amplio abanico de aplicaciones para PyMES, entre ellas las redes de vigilancia a gran escala y las instalaciones de cámaras.

Gigabit

Multi-Gig

Multi-Gigabit Switches



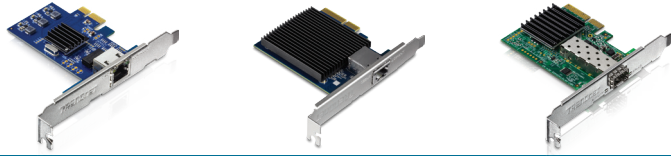
| | 10G Web Smart Switches | 10G Unmanaged | | | 2.5G Unmanaged | | |
|---------------------------------------|--|---------------|-----------|-------------------|----------------|----------|-----------------------|
| | TEG-30284 | TEG-S708 | TEG-S750 | TEG-S762 | TEG-S380 | TEG-S350 | TEG-S327 |
| Ports | 24 x Gigabit, 4 x 10G SFP+ | 8 x 10G | 5 x 10G | 4 x 2.5G, 2 x 10G | 8 x 2.5G | 5 x 2.5G | 2 x 2.5G, 5 x Gigabit |
| Switching capacity | 128Gbps | 160Gbps | 60Gbps | 60Gbps | 40Gbps | 25Gbps | 20Gbps |
| PoE power budget | - | - | - | - | - | - | - |
| RAM buffer | 1.5MB | 1.5MB | 2MB | 2MB | 1.5MB | 1.5MB | 384KB |
| Forwarding rate (64-byte packet size) | 95.2Mpps | 115.9Mpps | 44.64Mpps | 44.64Mpps | 29.76Mpps | 18.6Mpps | 14.88Mpps |
| MAC address table | 16K | 16K | 16K | 16K | 16K | 16K | 2K |
| VLAN | Asymmetric, port-based, 802.1Q, private, voice, GVRP | - | - | - | - | - | - |
| ACL | IPv4 L2-L4 & IPv6 | - | - | - | - | - | - |
| IPv6 | ✓ | - | - | - | - | - | - |
| Static IP routing | - | - | - | - | - | - | - |
| DoS prevention | ✓ | - | - | - | - | - | - |
| 802.1ab LLDP | ✓ | - | - | - | - | - | - |
| 802.1X | ✓ | - | - | - | - | - | - |
| Dynamic GVRP | ✓ | - | - | - | - | - | - |
| LACP (802.3ad) | ✓ | - | - | - | - | - | - |
| RMON | ✓ | - | - | - | - | - | - |
| CoS (802.1p) | ✓ | - | - | - | - | - | - |
| Spanning tree | STP, RSTP, MSTP | - | - | - | - | - | - |
| Multicast (IGMP) | v1, v2, v3 | - | - | - | - | - | - |
| SNMP | v1, v2c, v3 | - | - | - | - | - | - |
| Jumbo frames | 10KB | 12KB | 9KB | 9KB | 12KB | 12KB | 15KB |
| Fan | Fanless | 1 | Fanless | Fanless | Fanless | Fanless | Fanless |
| Mounting | Rack | Rack | - | Wall | Wall | Wall | Wall |
| TAA compliant | ✓ | ✓ | ✓ | ✓ | ✓ | ✓ | ✓ |
| NDAA compliant | ✓ | ✓ | ✓ | ✓ | ✓ | ✓ | ✓ |
| Warranty | 3 year | 3 year | 3 year | 3 year | 3 year | 3 year | 3 year |

Multi-Gigabit PoE+ Switches



| | 10G Web Smart PoE+ | | 2.5G PoE+ Unmanaged | | | |
|--|---|------------------------------------|---------------------|---------------|---------------------------------|------------------------------------|
| | TPE-3102WS | TPE-30284 | TPE-BG380 | TPE-TG380 | TPE-TG350 | TPE-TG327 |
| Ports | 8 x 2.5G, 2 x 10G SFP+ | 24 x Gigabit PoE+, 4 x 10G SFP+ | 8 x 2.5G PoE++ | 8 x 2.5G PoE+ | 4 x 2.5G PoE+, 1 x 2.5G PoE+ | 2 x 2.5G PoE+, 5 x Gigabit PoE+ |
| Switching capacity | 80Gbps | 128Gbps | 40Gbps | 40Gbps | 25Gbps | 20Gbps |
| PoE power budget | 240W | 370W | 130W | 100W | 55W | 70W |
| RAM buffer | 1.5MB | 1.5MB | 1MB | 1.5MB | 1.5MB | 384KB |
| Forwarding rate (64-byte packet size) | 178.56Mpps | 95.2Mpps | 29.76Mpps | 29.76Mpps | 18.6Mpps | 14.88Mpps |
| MAC address table | 16K | 16K | 4K | 16K | 16K | 2K |
| VLAN | Asymmetric, port-based, 802.1Q,private, voice, GVRP | - | - | - | - | - |
| ACL | IPv4 L2-L4 & IPv6 | IPv4 L2-L4 & IPv6 | - | - | - | - |
| IPv6 | ✓ | ✓ | - | - | - | - |
| Static IP routing | ✓ | - | - | - | - | - |
| DoS prevention | ✓ | ✓ | - | - | - | - |
| 802.1ab LLDP | ✓ | ✓ | - | - | - | - |
| 802.1X | ✓ | ✓ | - | - | - | - |
| Dynamic GVRP | ✓ | ✓ | - | - | - | - |
| LACP (802.3ad) | ✓ | ✓ | - | - | - | - |
| RMON | ✓ | ✓ | - | - | - | - |
| CoS (802.1p) | ✓ | ✓ | - | - | - | - |
| Spanning tree | STP, RSTP, MSTP | STP, RSTP, MSTP | - | - | - | - |
| Multicast (IGMP) | v1, v2, v3 | v1, v2, v3 | - | - | - | - |
| SNMP | v1, v2c, v3 | v1, v2c, v3 | - | - | - | - |
| Jumbo frames | 10KB | 10KB | 12KB | 12KB | 12KB | 15KB |
| Fan | Smart fans | Smart fans | Fanless | Fanless | Fanless | Fanless |
| Mounting | Rack | Rack | Wall | Wall | Wall | Wall |
| TAA/NDAA compliant | ✓ | ✓ | ✓ | ✓ | ✓ | ✓ |
| Warranty | 3 year | 3 year | 3 year | 3 year | 3 year | 3 year |

Multi-Gigabit Network Adapters & 10G SFP+ Modules



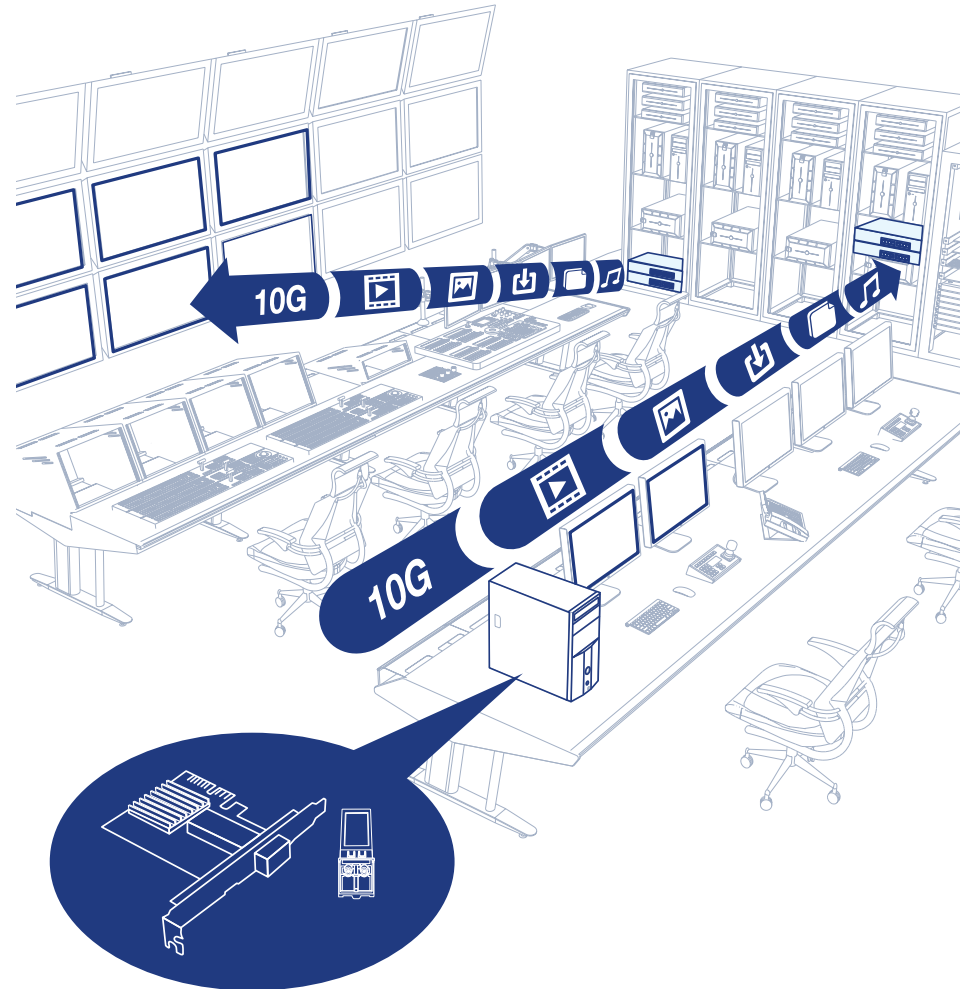
2.5G & 10G Network Adapters

| | TEG-25GECTX | TEG-10GECTX | TEG-10GECSFP |
|----------------------|--|--|--------------|
| Ports | 1 x 2.5GBASE-T | 1 x 10G BASE-T | 1 x 10G SFP+ |
| Speed | 2.5Gbps, 1Gbps, 100Mbps | 10Gbps, 5Gbps, 2.5Gbps, 1Gbps, 100Mbps | 10Gbps |
| Features | Includes standard and low-profile brackets | | |
| Form connector | PCIe 2.0 x 1 | PCIe 2.0 x 4 | PCIe 2.0 x 4 |
| 802.1Q VLAN | ✓ | ✓ | ✓ |
| Jumbo frames support | 9KB | 16KB | 16KB |
| OS compatibility | Windows®, Windows® Server | | |
| TAA compliant | ✓ | ✓ | - |
| NDA compliant | ✓ | ✓ | ✓ |
| Warranty | 3 year | 3 year | 3 year |



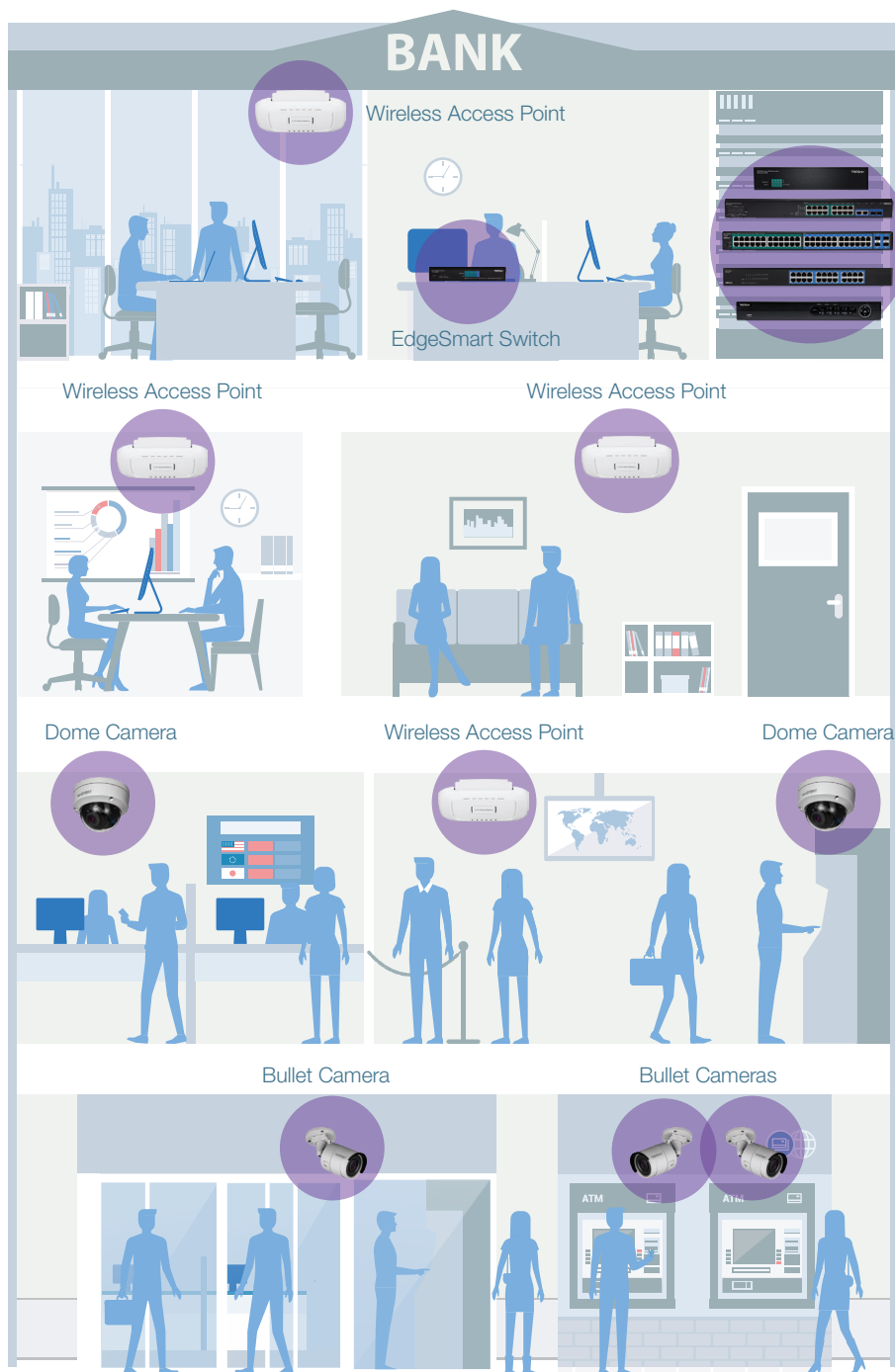
10G Fiber SFP+ Modules

| | TEG-10GBS40 | TEG-10GBS10 | TEG-10GBSR |
|--------------------------------------|-----------------|----------------|-----------------|
| Date rate | 10 Gigabit | 10 Gigabit | 10 Gigabit |
| Fiber mode | Single | Single | Multi |
| Distance | 40km (24.9 mi.) | 10km (6.2 mi.) | 550m (1804 ft.) |
| Digital Diagnostics Monitoring (DDM) | ✓ | ✓ | ✓ |
| Wavelength | 1550nm | 1310nm | 850nm |
| TAA/NDA compliant | ✓ | ✓ | ✓ |
| Warranty | 3 year | 3 year | 3 year |



TEG-10GECSFP + TEG-10GBSR

PoE: Flexibility & Savings



AP Controller
Smart Surveillance Switch
L2 Managed Switch
Unmanaged Switch
Network Video Recorder

Save on setup costs and installation time by delivering power and data over a single Ethernet cable to PoE devices such as IP cameras and access points. In addition to reduced cost and time, PoE has several other benefits including flexibility for remote installations, network scalability, and managed controls. PoE delivers 15.4 watts of power per port; PoE+ delivers 30 watts; and PoE++ delivers up to 95 watts of power per port.

See more PoE switches in the Multi-Gigabit and Industrial sections; see a PoE+ router in the Industrial section; see PoE access points in the SMB Wireless section; and see PoE cameras and NVRs in the Surveillance section.

Français:

Economisez sur les coûts d'installation et sur le temps d'installation en fournissant l'alimentation et les données sur un seul câble Ethernet aux dispositifs PoE tels que les caméras IP et les points d'accès. Outre la réduction des coûts et du temps, le PoE offre plusieurs autres avantages, dont la souplesse pour les installations à distance, l'évolutivité du réseau et les contrôles gérés.

Deutsch:

Sparen Sie Einrichtungskosten und Installationszeit, indem Sie Strom und Daten über ein einziges Ethernet-Kabel an PoE-Geräte wie IP-Kameras und Access Points liefern. Zusätzlich zu Kosten- und Zeitersparnis bietet PoE eine Reihe weiterer Vorteile, darunter Flexibilität für Remote-Installationen, Netzwerk-Skalierbarkeit und verwaltete Steuerungen.

Português:

Economize nos custos e no tempo de instalação fornecendo energia e dados através de um único cabo Ethernet para dispositivos PoE, como câmeras IP e pontos de acesso. Além de reduzir custos e tempo, o PoE tem vários outros benefícios, incluindo flexibilidade para instalações remotas, escalabilidade de rede e controles gerenciados.

Español:

Ahorre gastos y tiempo de instalación suministrando alimentación y datos mediante un solo cable Ethernet a dispositivos PoE como cámaras IP y puntos de acceso. Además de ahorrar gastos y tiempo, la tecnología PoE ofrece otras ventajas, como flexibilidad para instalaciones remotas, escalabilidad de red y controles administrados.

Smart Surveillance Switches



ONVIF® Conformant
Profile Q



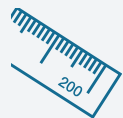
PoE Self-Healing
PoE device
auto-recovery &
power scheduling



Manage Cameras
from switch interface



Real-Time Data
for monitoring &
troubleshooting



Extend PoE Signal
up to 656 ft./200m
at 10Mbps



Front Panel LED
displays PoE power
statistics



Gigabit Web Smart PoE+

| | TPE-3018LS | TPE-3012LS |
|-----------------------------|--|---|
| Ports | 16 x Gigabit PoE+, 2 x Shared Gigabit (RJ-45/SFP) | 8 x Gigabit PoE+, 2 x Gigabit, 2 x SFP |
| PoE budget | 220W | 110W |
| Max. power per port | 30W | 30W |
| Switching capacity | 36Gbps | 24Gbps |
| RAM buffer | 512KB | 512KB |
| Forwarding rate | 26.7Mpps | 17.8Mpps |
| MAC address table | 8K | 8K |
| VLAN | Asymmetric, port-based, 802.1Q, private, voice, GVRP | |
| ACL | IPv4 L2-L4 & IPv6 | IPv4 L2-L4 & IPv6 |
| IPv6 | ✓ | ✓ |
| DoS prevention | ✓ | ✓ |
| 802.1ab LLDP | ✓ | ✓ |
| 802.1X | ✓ | ✓ |
| Spanning tree | STP, RSTP, MSTP | STP, RSTP, MSTP |
| Multicast (IGMP) | v1, v2, v3 | v1, v2, v3 |
| SNMP | v1, v2c, v3 | v1, v2c, v3 |
| Port-based link aggregation | ✓ | ✓ |
| Mounting | Rack | Rack |
| Fan | Smart fan | Fanless |
| TAA/NDAA compliant | ✓ | ✓ |
| Warranty | 3 year | 3 year |

Managed PoE Switches



Gigabit Web Smart PoE+

| | TPE-5048WS | TPE-5240WS | TPE-5028WS | TPE-2840WS | TPE-1620WSF | TPE-1620WS | TPE-1021WS |
|-----------------------------|---|--|--|--|--|--|------------------------------|
| Ports | 48 x Gigabit PoE+, 4 x Shared Gigabit (RJ-45/SFP) | 48 x Gigabit PoE+, 4 x Shared Gigabit (RJ-45/SFP) | 24 x Gigabit PoE+, 4 x Shared Gigabit (RJ-45/SFP) | 24 x Gigabit PoE+, 4 x Shared Gigabit (RJ-45/SFP) | 16 x Gigabit PoE+, 4 x Shared Gigabit (RJ-45/SFP) | 16 x Gigabit PoE+, 4 x Shared Gigabit (RJ-45/SFP) | 8 x Gigabit PoE+, 2 x SFP |
| PoE budget | 740W | 370W | 370W | 185W | 370W | 185W | 130W |
| Max. power per port | 30W | 30W | 30W | 30W | 30W | 30W | 30W |
| Switching capacity | 104Gbps | 104Gbps | 56Gbps | 56Gbps | 40Gbps | 40Gbps | 20Gbps |
| RAM buffer | 1.5MB | 1.5MB | 512KB | 512KB | 512KB | 512KB | 512KB |
| Forwarding rate | 77.4Mpps | 77.4Mpps | 41.7Mpps | 41.7Mpps | 29.8Mpps | 29.8Mpps | 14.9Mpps |
| MAC address table | 16K | 16K | 8K | 8K | 8K | 8K | 8K |
| VLAN | Asymmetric, port-based, 802.1Q, private, voice, GVRP, multicast | | | | | | |
| ACL | IPv4 L2-L4 & IPv6 | IPv4 L2-L4 & IPv6 | IPv4 L2-L4 & IPv6 | IPv4 L2-L4 & IPv6 | IPv4 L2-L4 & IPv6 | IPv4 L2-L4 & IPv6 | IPv4 L2-L4 & IPv6 |
| IPv6 | ✓ | ✓ | ✓ | ✓ | ✓ | ✓ | ✓ |
| Static IP routing | ✓ | ✓ | ✓ | ✓ | ✓ | ✓ | ✓ |
| DoS prevention | ✓ | ✓ | ✓ | ✓ | ✓ | ✓ | ✓ |
| 802.1ab LLDP | ✓ | ✓ | ✓ | ✓ | ✓ | ✓ | ✓ |
| 802.1X | ✓ | ✓ | ✓ | ✓ | ✓ | ✓ | ✓ |
| Spanning tree | STP, RSTP, MSTP | STP, RSTP, MSTP | STP, RSTP, MSTP | STP, RSTP, MSTP | STP, RSTP, MSTP | STP, RSTP, MSTP | STP, RSTP, MSTP |
| Multicast (IGMP) | v1, v2, v3 | v1, v2, v3 | v1, v2, v3 | v1, v2, v3 | v1, v2, v3 | v1, v2, v3 | v1, v2, v3 |
| SNMP | v1, v2c, v3 | v1, v2c, v3 | v1, v2c, v3 | v1, v2c, v3 | v1, v2c, v3 | v1, v2c, v3 | v1, v2c, v3 |
| Port-based link aggregation | ✓ | ✓ | ✓ | ✓ | ✓ | ✓ | ✓ |
| Mounting | Rack | Rack | Rack | Rack | Rack | Rack | Rack |
| Fan | Smart fans | Smart fans | Smart fans | Smart fans | Smart fans | Smart fans | Fanless |
| Cloud management | Hive compatible* | Hive compatible* | Hive compatible* | Hive compatible* | Hive compatible* | Hive compatible* | Hive compatible* |
| TAA/NDA compliant | ✓ | ✓ | ✓ | ✓ | ✓ | ✓ | ✓ |
| Warranty | 3 year | 3 year | 3 year | 3 year | 3 year | 3 year | 3 year |

PoE Switches & PoE Solutions



| | EdgeSmart PoE Powered | | Long Range PoE | |
|-----------------------------|---|------------------|-------------------------------|-------------------------------|
| | TPE-P521ES | TPE-LG80 | TPE-TG51g | TPE-LG50 |
| Ports | 1 x Gigabit PoE+ in, 2 x Gigabit PoE out, 2 x Gigabit | 8 x Gigabit PoE+ | 4 x Gigabit PoE+, 1 x Gigabit | 4 x Gigabit PoE+, 1 x Gigabit |
| PoE budget | 18W (PoE+ in), 8W (PoE in) | 65W | 60W | 32W |
| Max. power per port | 18W | 30W | 30W | 30W |
| Switching capacity | 10Gbps | 16Gbps | 10Gbps | 10Gbps |
| RAM buffer | 512KB | 192KB | 128KB | 128KB |
| Forwarding rate | 7.4Mpps | - | - | - |
| MAC address table | 2K | 4K | 2K | 2K |
| VLAN | Asymmetric, port-based, 802.1Q, private, voice | - | - | - |
| Spanning tree | STP, RSTP | - | - | - |
| Multicast (IGMP) | v1, v2, v3 | - | - | - |
| SNMP | v1, v2c | - | - | - |
| Port-based link aggregation | ✓ | - | - | - |
| Mounting | Wall | Wall | Wall | Wall |
| Fan | Fanless | - | - | - |
| Power adapter | - | External | External | External |
| TAA/NDAA compliant | ✓ | ✓ | ✓ | ✓ |
| Warranty | 3 year | 3 year | 3 year | 3 year |



| Injectors | | | | | | Splitters | Extenders |
|---|--------------------|----------------------------------|----------------------------|--------------------------------|---------------------------|--|--|
| TPE-319GI | TPE-215GI | TPE-147GI | TPE-119GI | TPE-117GI | TPE-115GI | TPE-104GS | TPE-BE200 |
| 10G PoE++ Injector | 2.5G PoE+ Injector | 65W 4-Port Gigabit PoE+ Injector | Gigabit PoE++ 90W Injector | Gigabit Ultra PoE 60W Injector | Gigabit PoE+ 30W Injector | Gigabit PoE Splitter | Gigabit PoE++ Extender |
| TAA/NDAA compliant | TAA/NDAA compliant | TAA/NDAA compliant | TAA/NDAA compliant | NDAA compliant | NDAA compliant | NDAA compliant | TAA/NDAA compliant |
| Converts a network data signal into a PoE Ethernet connection | | | | | | Splits a PoE signal into separate data and power sources | Extends a PoE network connection for up to 100m (328 ft.) without the use of a power adapter |

Unmanaged PoE Switches



Gigabit PoE+

| | TPE-TG262 | TPE-TG240g | TPE-TG182 | TPE-TG160g | TPE-TG161H | TPE-TG160H | TPE-TG80g | TPE-TG84 |
|---------------------|---------------------------------------|-------------------|---------------------------------------|-------------------|-------------------|-------------------|------------------|------------------|
| Ports | 24 x Gigabit PoE+, 2 x Gigabit SFP | 24 x Gigabit PoE+ | 16 x Gigabit PoE+, 2 x Gigabit SFP | 16 x Gigabit PoE+ | 16 x Gigabit PoE+ | 16 x Gigabit PoE+ | 8 x Gigabit PoE+ | 8 x Gigabit PoE+ |
| PoE budget | 380W | 370W | 240W | 246W | 120W | 123W | 123W | 120W |
| Max. power per port | 30W | 30W | 30W | 30W | 30W | 30W | 30W | 30W |
| Switching capacity | 52Gbps | 48Gbps | 36Gbps | 32Gbps | 32Gbps | 32Gbps | 16Gbps | 16Gbps |
| RAM buffer | 512KB | 512KB | 512KB | 512KB | 512KB | 512KB | 128KB | 192KB |
| MAC address table | 8K | 8K | 8K | 8K | 8K | 8K | 9K | 4K |
| Mounting | Rack | Rack | Rack | Rack | Rack | Rack | - | Wall |
| Power adapter | Internal | Internal | Internal | Internal | External | External | External | External |
| TAA/NDAA compliant | ✓ | ✓ | ✓ | ✓ | ✓ | ✓ | ✓ | ✓ |
| Warranty | 3 year | 3 year | 3 year | 3 year | 3 year | 3 year | 3 year | 3 year |



Gigabit PoE+

10/100 PoE+

| | TPE-TG83 | TPE-TG82g | TPE-TG611 | TPE-TG44g | TPE-TG50g | TPE-TG52 | TPE-S50 |
|---------------------|------------------|------------------|---|----------------------------------|----------------------------------|----------------------------------|--|
| Ports | 8 x Gigabit PoE+ | 8 x Gigabit PoE+ | 4 x Gigabit PoE+, 1 x Gigabit, 1 x SFP | 4 x Gigabit PoE+, 4 x Gigabit | 4 x Gigabit PoE+, 1 x Gigabit | 4 x Gigabit PoE+, 1 x Gigabit | 4 x 10/100Mbps PoE+, 2 x 10/100Mbps |
| PoE budget | 65W | 61W | 65W | 61.6W | 31W | 32W | 60W |
| Max. power per port | 30W | 30W | 30W | 30W | 30W | 30W | 30W |
| Switching capacity | 16Gbps | 16Gbps | 12Gbps | 16Gbps | 10Gbps | 10Gbps | 1.2Gbps |
| RAM buffer | 192KB | 128KB | 128KB | 128KB | 128KB | 128KB | 96KB |
| MAC address table | 4K | 8K | 2K | 8K | 8K | 2K | 2K |
| Mounting | Wall | - | - | - | - | Wall | Wall |
| Power adapter | External | External | External | External | External | External | Internal |
| TAA compliant | ✓ | ✓ | ✓ | ✓ | ✓ | ✓ | - |
| NDAA compliant | ✓ | ✓ | ✓ | ✓ | ✓ | ✓ | ✓ |
| Warranty | 3 year | 3 year | 3 year | 3 year | 3 year | 3 year | 3 year |

Rugged Industrial Networking



Industrial Enclosure Application

Industrial switches are often installed inside rugged enclosures with an outdoor weather rating.

TI-CA2 shown above.

TRENDnet industrial switch and fiber solutions provide dependable and hardened networking hardware for your industrial environments. With an enclosure rating of IP30/IP40, TRENDnet's industrial networking hardware is designed to withstand a high degree of vibration and shock, and extreme heat or cold.

Français:

Les solutions de switches industriels et de fibres TRENDnet fournissent un matériel réseau fiable et renforcé à vos environnements industriels. Avec un indice de protection IP30/IP40, le matériel de mise réseau industriel de TRENDnet est conçu pour résister à un degré élevé de vibrations et de chocs, ainsi qu'à la chaleur ou au froid extrême.

Deutsch:

Industrielle Switch- und Glasfaserlösungen von TRENDnet bieten zuverlässige und robuste Netzwerkhardware für Ihre industrielle Umgebung. Mit einer Gehäuseschutzklasse von IP30/IP40 ist die industrielle Netzwerkhardware von TRENDnet so ausgelegt, dass sie einem hohen Grad an Vibration und Schock sowie extremer Hitze oder Kälte standhält.

Português:

As soluções de fibra e switches industriais da TRENDnet fornecem um hardware de rede robusto e confiável para seus ambientes industriais. Com uma classificação de gabinete IP30/IP40, o hardware de rede industrial da TRENDnet foi projetado para suportar um alto grau de vibração, choque e calor ou frio extremos.

Español:

Las soluciones de switches industriales y de fibra de TRENDnet ofrecen un hardware de red confiable y robusto para entornos industriales. Con su carcasa con calificación IP30/IP40, el hardware de red industrial de TRENDnet está concebido para resistir un alto grado de vibraciones y golpes, así como un calor y un frío extremos.

Industrial Managed Switches



| | L2+ PoE++ | Industrial L2 Managed PoE+ | | | | Industrial L2 Managed | | |
|-----------------------------|--|---|--|---|---|---|---|---|
| | TI-BG62i | TI-RP262i | TI-PG1284i | TI-PG102i | TI-PG541i | TI-G160i | TI-G102i | TI-G642i |
| Ports | 4 x Gigabit PoE++, 2 x SFP | 24 x Gigabit PoE+, 2 x SFP | 8 x Gigabit PoE+, 4 x Gigabit SFP, 1 x Console | 8 x Gigabit PoE+, 2 x Gigabit SFP | 4 x Gigabit PoE+, 1 x Gigabit, 1 x SFP | 16 x Gigabit | 8 x Gigabit, 2 x SFP | 4 x Gigabit, 2 x SFP |
| PoE budget | 360W | 685W | 240W | 240W @ 48V input, 124W @ 24V input | 120W | - | - | - |
| Max. power per port | 95W | 30W | 30W | 30W | 30W | - | - | - |
| Switching capacity | 12Gbps | 52Gbps | 24Gbps | 20Gbps | 12Gbps | 32Gbps | 20Gbps | 12Gbps |
| RAM buffer | 512MB | 512KB | 128MB | 128MB | 128MB | 128MB | 128MB | 128MB |
| Forwarding rate | 8.9Mpps | 38.7Mpps | 17.86Mpps | 14.8Mpps | 8.93Mpps | 23.8Mpps | 14.88Mpps | 18.9Mpps |
| MAC address table | 16K | 8K | 16K | 8K | 8K | 8K | 8K | 8K |
| VLAN | 802.1Q, port-based, MAC-based, Q-in-Q VLAN, port isolation | Port-based, 802.1Q, MAC-based, port isolation | 802.1Q, port-based, MAC-based, Q-in-Q VLAN, port isolation | Port-based, 802.1Q, MAC-based, port isolation | Port-based, 802.1Q, MAC-based, port isolation | Port-based, 802.1Q, MAC-based, port isolation | Port-based, 802.1Q, MAC-based, port isolation | Port-based, 802.1Q, MAC-based, port isolation |
| ACL | IPv4 L2-L4 | IPv4 L2-L4 | IPv4 L2-L4 | IPv4 L2-L4 | IPv4 L2-L4 | IPv4 L2-L4 | IPv4 L2-L4 | IPv4 L2-L4 |
| IPv6 | IPv6 static IP address, DHCPv6 client | - | IPv6 static IP address, DHCPv6 client | - | - | - | - | - |
| 802.1ab LLDP | ✓ | ✓ | ✓ | ✓ | ✓ | ✓ | ✓ | ✓ |
| 802.1X | ✓ | ✓ | ✓ | ✓ | ✓ | ✓ | ✓ | ✓ |
| Spanning tree | STP, RSTP, MSTP | STP, RSTP | STP, RSTP, MSTP | STP, RSTP | STP, RSTP | STP, RSTP | STP, RSTP | STP, RSTP |
| ERPS | ✓ | ✓ | ✓ | ✓ | ✓ | ✓ | ✓ | ✓ |
| Multicast (IGMP) | v1, v2, v3 | v1, v2, v3 | v1, v2, v3 | v1, v2, v3 | v1, v2, v3 | v1, v2, v3 | v1, v2, v3 | v1, v2, v3 |
| SNMP | v1, v2c, 3 | v1, v2c, v3 | v1, v2c, 3 | v1, v2c, v3 | v1, v2c, v3 | v1, v2c, v3 | v1, v2c, v3 | v1, v2c, v3 |
| Port-based link aggregation | ✓ | ✓ | ✓ | ✓ | ✓ | ✓ | ✓ | ✓ |
| Temperature | -40° – 75° C (-40° – 167° F) | -40° – 70° C (-40° – 158° F) | -40° – 75° C (-40° – 167° F) | -40° – 75° C (-40° – 167° F) | -40° – 75° C (-40° – 167° F) | -40° – 75° C (-40° – 167° F) | -40° – 75° C (-40° – 167° F) | -40° – 75° C (-40° – 167° F) |
| Housing | IP30 | IP30 | IP30 | IP30 | IP30 | IP30 | IP30 | IP30 |
| Mounting | DIN-Rail | Rack | DIN-Rail | DIN-Rail, Wall | DIN-Rail | DIN-Rail | DIN-Rail | DIN-Rail |
| Power supply | TI-S15052, TI-S24052, TI-S48048* | TI-S15052, TI-S24052, TI-RSP100048* | TI-S15052, TI-S24052, TI-S48048* | TI-S15052, TI-S24052, TI-S48048* | TI-S15052, TI-S24052, 48VDC3000, TI-S24048* | TI-S15052, TI-S24052, TI-S12048* | TI-S15052, TI-S24052, TI-M6024* | TI-S15052, TI-S24052, TI-M6024* |
| TAA/NDAA compliant | ✓ | ✓ | ✓ | ✓ | ✓ | ✓ | ✓ | ✓ |
| Warranty | 3 year | 3 year | 3 year | 3 year | 3 year | 3 year | 3 year | 3 year |

Industrial Unmanaged Switches



| | PoE++ | | Industrial Gigabit PoE+ Switches | | | | | | | | | Industrial 10/100 PoE+ | |
|---------------------|---|--|--|--|---|---|--|--|---|---|--|---|--|
| | TI-BG104 | TI-UPG62 | TI-PG160 | TI-PG162 | TI-PG102 | TI-PGM102 | TI-PG80 | TI-PG62 | TI-PG541 | TI-PGM541 | TI-PG50 | TI-PE80 | TI-PE50 |
| Ports | 4 x Gigabit PoE++, 4 x Gigabit PoE+, 2 x Shared Gigabit (SFP or RJ-45) | 4 x Gigabit PoE++, 1 x Gigabit, 2 x SFP | 16 x Gigabit PoE+ | 14 x Gigabit PoE+, 2 x Gigabit SFP | 8 x Gigabit PoE+, 2 x Shared Gigabit (RJ-45/SFP) | 8 x Gigabit PoE+, 2 x Gigabit SFP | 8 x Gigabit PoE+ | 4 x Gigabit PoE+, 1 x SFP, 1 x Shared Gigabit (RJ-45/SFP) | 4 x Gigabit PoE+, 1 x Gigabit, 1 x SFP | 4 x Gigabit PoE+, 1 x Gigabit SFP | 4 x Gigabit PoE+, 1 x Gigabit | 8 x 10/100Mbps PoE+ | 4 x 10/100Mbps PoE+, 1 x 10/100Mbps |
| PoE budget | 360W | 240W | 240W | 240W | 240W | 240W | 200W | 120W | 120W | 120W | 120W | 200W | 90W |
| Max. power per port | 90W | 90W | 30W | 30W | 30W | 30W | 30W | 30W | 30W | 30W | 30W | 30W | 30W |
| Switching capacity | 20Gbps | 12Gbps | 32Gbps | 32Gbps | 20Gbps | 20Gbps | 16Gbps | 12Gbps | 12Gbps | 10Gbps | 10Gbps | 1.6Gbps | 1Gbps |
| RAM buffer | 2MB | 1MB | 512KB | 512KB | 2MB | 1.5MB | 1MB | 1MB | 512KB | 8KB | 128KB | 1MB | 56KB |
| MAC address table | 11K | 1K | 8K | 8K | 16K | 4K | 8K | 1K | 8K | 2K | 2K | 1K | 1K |
| Temperature | -40° – 75° C (-40° – 167° F) | | | | | -20° – 65° C (-4° – 149° F) | -40° – 75° C (-40° – 167° F) | | | -20° – 65° C (-4° – 149° F) | -40° – 75° C (-40° – 167° F) | | |
| Housing | IP30 | IP30 | IP30 | IP30 | IP30 | IP30 | IP30 | IP30 | IP30 | IP30 | IP30 | IP30 | IP30 |
| Mounting | DIN-Rail, Wall | DIN-Rail, Wall | DIN-Rail, Wall | DIN-Rail, Wall | DIN-Rail, Wall | DIN-Rail, Wall | DIN-Rail, Wall | DIN-Rail, Wall | DIN-Rail | DIN-Rail, Wall | DIN-Rail, Wall | DIN-Rail, Wall | DIN-Rail, Wall |
| Power supply | TI-S15052, TI-S24052, TI-S24048, TI-S48048* | TI-S15052, TI-S24052, TI-S48048* | TI-S15052, TI-S24052, TI-S48048* | TI-S15052, TI-S24052, TI-S48048* | TI-S15052, TI-S24052, 48VDC3000, TI-S24048* | TI-S15052, TI-S24052, TI-S24048* | TI-S15052, TI-S24052, TI-S24048* | TI-S15052, TI-S24052, 48VDC3000, TI-S12048, TI-S24048* | TI-S15052, TI-S24052, TI-S12048* | TI-S15052, TI-S24052, TI-S12048*, TI-S24048* | TI-S15052, TI-S24052, TI-S24048* | TI-S15052, TI-S24052, TI-S12048*, TI-S24048* | |
| TAA/NDAA compliant | ✓ | ✓ | ✓ | ✓ | ✓ | ✓ | ✓ | ✓ | ✓ | ✓ | ✓ | ✓ | ✓ |
| Warranty | 3 year | 3 year | 3 year | 3 year | 3 year | 3 year | 3 year | 3 year | 3 year | 3 year | 3 year | 3 year | 3 year |



| | Industrial Gigabit Switches | | | | | Industrial 10/100 Switches | |
|--------------------|---------------------------------|--|------------------------------|------------------------------|---|---------------------------------|------------------------------|
| | TI-G162 | TI-G102 | TI-G80 | TI-G50 | TI-G62 | TI-E80 | TI-E50 |
| Ports | 14 x Gigabit, 2 x Gigabit SFP | 8 x Gigabit, 2 x Shared Gigabit (RJ-45/SFP) | 8 x Gigabit | 5 x Gigabit | 4 x Gigabit, 1 x SFP, 1 x Shared Gigabit (RJ-45/SFP) | 8 x 10/100Mbps | 5 x 10/100Mbps |
| Switching capacity | 32Gbps | 20Gbps | 16Gbps | 10Gbps | 12Gbps | 1.6Gbps | 1Gbps |
| RAM buffer | 512KB | 2MB | 1MB | 1MB | 1MB | 56KB | 56KB |
| MAC address table | 8K | 16K | 8K | 8K | 2K | 1K | 1K |
| Temperature | -40° – 75° C (-40° – 167° F) | -40° – 75° C (-40° – 167° F) | -40° – 75° C (-40° – 167° F) | -40° – 75° C (-40° – 167° F) | -40° – 75° C (-40° – 167° F) | -40° – 75° C (-40° – 167° F) | -40° – 75° C (-40° – 167° F) |
| Housing | IP30 | IP30 | IP30 | IP30 | IP30 | IP30 | IP30 |
| Mounting | DIN-Rail, Wall | DIN-Rail, Wall | DIN-Rail, Wall | DIN-Rail, Wall | DIN-Rail, Wall | DIN-Rail, Wall | DIN-Rail, Wall |
| Power supply | TI-S15052, TI-S24052, TI-M6024* | | | | | TI-S15052, TI-S24052, TI-M6024* | |
| TAA/NDAA compliant | ✓ | ✓ | ✓ | ✓ | ✓ | ✓ | ✓ |
| Warranty | 3 year | 3 year | 3 year | 3 year | 3 year | 3 year | 3 year |

*Power supply required.

Industrial Specialty Switches & PoE Solutions



| | Variable Voltage | | EN50155 M12 Switch | Front Access Switches | | | |
|---------------------|--|--|--|--|--|---|---|
| | TI-PG80B | TI-PG62B | TI-TPG80 | TI-PG102F | TI-PG80F | TI-PG62F | TI-PG50F |
| Ports | 8 x Gigabit PoE+ | 4 x Gigabit PoE+, 2 x SFP | 8 x M12 Gigabit PoE+ | 8 x Gigabit PoE+, 2 x SFP | 8 x Gigabit PoE+ | 4 x Gigabit PoE+, 2 x Gigabit SFP | 4 x Gigabit PoE+, 1 x Gigabit |
| PoE budget | 120W – 200W | 60 – 120W | 200W@48V DC, 100W@24V DC | 240W | 200W | 120W | 120W |
| Max. power per port | 30W | 30W | 30W | 30W | 30W | 30W | 30W |
| Switching capacity | 16Gbps | 12Gbps | 16Gbps | 20Gbps | 16Gbps | 12Gbps | 10Gbps |
| RAM buffer | 1MB | 1MB | 2MB | 256KB | 1MB | 128KB | 1MB |
| MAC address table | 4K | 1K | 11K | 16K | 4K | 1K | 2K |
| Temperature | -40° – 75° C (-40° – 167° F) | -40° – 75° C (-40° – 167° F) | -40° – 75° C (-40° – 167° F) | -40° – 75° C (-40° – 167° F) | -40° – 75° C (-40° – 167° F) | -40° – 75° C (-40° – 167° F) | -40° – 75° C (-40° – 167° F) |
| Housing | IP30 | IP30 | IP30 | IP30 | IP30 | IP30 | IP30 |
| Mounting | DIN-Rail, Wall | DIN-Rail, Wall | Wall | DIN-Rail, Wall | DIN-Rail, Wall | DIN-Rail, Magnet | DIN-Rail, Wall |
| Power supply | TI-S15052, TI-S24052, TI-S24048, TI-S12024* | TI-S15052, TI-S24052, TI-S12024, TI-S12048* | TI-S15052, TI-S24052, TI-S12024, TI-S12048* | TI-S15052, TI-S24052, TI-S24048, TI-S48048, 48VDC3000* | TI-S15052, TI-S24052, TI-S24048, TI-S48048, 48VDC3000* | TI-S15052, TI-S24052, TI-S12048, TI-S24048, 48VDC3000* | TI-S15052, TI-S24052, TI-S24048, TI-S48048, 48VDC3000* |
| TAA/NDAA compliant | ✓ | ✓ | ✓ | ✓ | ✓ | ✓ | ✓ |
| Warranty | 3 year | 3 year | 3 year | 3 year | 3 year | 3 year | 3 year |



Industrial Gigabit PoE Injectors / Extenders / Splitter

| | TI-IG290 | TI-IG90 | TI-IG60 | TI-IG30 | TI-BE200 | TI-EU120 | TI-BEP200 | TI-E100 | TI-SG104 |
|--------------------|-------------------------------------|-------------------------------------|-------------------------------------|-------------------------------------|---------------------------------|----------------------------------|--------------------------------------|-------------------------------------|----------------------------------|
| Description | 2-Port 2.5G PoE++ Injector | PoE++ Injector | UPoE Injector | PoE+ Injector | 2-Port Outdoor PoE++ Extender | 2-Port Outdoor UPoE Extender | 2-Port Active/ Passive PoE+ Extender | PoE+ Extender | UPoE Splitter |
| PoE budget | 180W | 90W | 60W | 30W | 60W | 64W | 60W | 30W | - |
| Temperature | -40 to 75 °C (-40 to 167 °F) | -40° – 75° C (-40° – 167° F) | -40° – 75° C (-40° – 167° F) | -40° – 75° C (-40° – 167° F) | -40° – 75° C (-40° – 167° F) | -40° – 75° C (-40° – 167° F) | -40° – 75° C (-40° – 167° F) | -40° – 75° C (-40° – 167° F) | -40° – 80° C (-40° – 185° F) |
| Housing | IP30 | IP30 | IP30 | IP30 | IP67 | IP67 | IP67 | IP30 | IP30 |
| Mounting | DIN-Rail, Wall | DIN-Rail, Wall | DIN-Rail, Wall | DIN-Rail, Wall | Wall | Wall | Wall | DIN-Rail, Wall | DIN-Rail, Wall |
| Power supply | TI-S15052, TI-S24052, TI-S24048* | TI-S15052, TI-S24052, TI-S12048* | TI-S15052, TI-S24052, TI-S12048* | TI-S15052, TI-S24052, TI-S12048* | PoE++ | PD power input: 30W, 60W, 95W | PoE++ | TI-S15052, TI-S24052, TI-S12048* | DC output: 12V, 16V, 24V, 48V |
| TAA/NDAA compliant | ✓ | ✓ | ✓ | ✓ | ✓ | ✓ | ✓ | ✓ | ✓ |
| Warranty | 3 year | 3 year | 3 year | 3 year | 3 year | 3 year | 3 year | 3 year | 3 year |

Industrial Fiber



| | Industrial Gigabit Fiber Converters | | | Industrial 100Mbps Fiber Converters | |
|--------------------|-------------------------------------|----------------------------------|---------------------------------|-------------------------------------|---------------------------------|
| | TI-UF11SFP | TI-PF11SFP | TI-F11SFP | TI-F10S30 | TI-F10SC |
| Description | SFP to Gigabit UPoE | SFP to Gigabit PoE+ | 100/1000BASE-T to SFP | 100BASE-FX Single-Mode SC | 100BASE-FX Multi-Mode SC |
| Fiber mode | Based on SFP | Based on SFP | Based on SFP | Single | Multi |
| Fiber converter | SFP | SFP | SFP | Duplex SC | Duplex SC |
| PoE budget | 60W | 30W | - | - | - |
| Distance | Based on SFP | Based on SFP | Based on SFP | 30km (18.6 mi.) | 2km (1.2 mi.) |
| Temperature | -40° – 75° C (-40° – 167° F) | -40° – 75° C (-40° – 167° F) | -40° – 75° C (-40° – 167° F) | -40° – 75° C (-40° – 167° F) | -40° – 75° C (-40° – 167° F) |
| Housing | IP30 | IP30 | IP30 | IP40 | IP40 |
| Wavelength | Based on SFP | Based on SFP | Based on SFP | 1310nm | 1310nm |
| Mounting | DIN-Rail, Wall | DIN-Rail, Wall | DIN-Rail, Wall | DIN-Rail, Wall | DIN-Rail, Wall |
| Power supply | TI-S15052, TI-S24052, TI-S12048* | TI-S15052, TI-S24052, TI-S12048* | TI-S15052, TI-S24052, TI-M6024* | TI-S15052, TI-S24052, TI-M6024* | TI-S15052, TI-S24052, TI-M6024* |
| TAA/NDAA compliant | ✓ | ✓ | ✓ | ✓ | ✓ |
| Warranty | 3 year | 3 year | 3 year | 3 year | 3 year |



| | Industrial SFP Modules | | |
|--------------------|------------------------|---------------|--------------|
| | TI-MGBS40 | TI-MGBS10 | TI-MGBSX |
| Fiber mode | Single (40km) | Single (10km) | Multi (550m) |
| TAA/NDAA compliant | ✓ | ✓ | ✓ |
| Warranty | 3 year | 3 year | 3 year |

*Power supply required.

Industrial Wireless & Industrial Modbus



| | Industrial PoE+ Router | Industrial Router |
|----------------------------|--|--|
| | TI-WP100 | TI-W100 |
| Wireless rating | AC1200 | AC1200 |
| Max. data rate / WiFi band | 867Mbps (AC) + 300Mbps (N) | 867Mbps (AC) + 300Mbps (N) |
| Ports | 4 x Gigabit PoE+, 1 x Gigabit WAN | 4 x Gigabit, 1 x Gigabit WAN |
| PoE budget | 120W | - |
| Max. power per port | 30W | - |
| Features | 802.11ac dual band WiFi, PoE+, VPN router, Multi-WAN (Ethernet & WiFi), Modbus | 802.11ac dual band WiFi, VPN router, Multi-WAN (Ethernet & WiFi), Modbus |
| VPN | IPsec, SSL VPN | IPsec, SSL VPN |
| Multi-WAN | Fail-over, load balancing | Fail-over, load balancing |
| Access controls | MAC filter, DMZ, Port Forwarding, SPI, IPS | MAC filter, DMZ, Port Forwarding, SPI, IPS |
| Management | HTTP / HTTPS, Telnet / SSH | HTTP / HTTPS, Telnet / SSH |
| VLAN | 802.1Q VLAN, Inter-VLAN routing, multiple SSID w/ VLAN tagging | 802.1Q VLAN, Inter-VLAN routing, multiple SSID w/ VLAN tagging |
| Scheduling | Auto power cycle, radios on/off | Auto power cycle, radios on/off |
| Temperature | -30° – 70° C (-22° – 158° F) | -30° – 70° C (-22° – 158° F) |
| Housing | IP30 | IP30 |
| Mounting | DIN-Rail | DIN-Rail |
| Power supply | TI-S15052, TI-S24052, TI-S12048, TI-S12024, TI-S24048* | TI-M6024* |
| Antenna base | TEW-LB101** | TEW-LB101** |
| TAA/NDAA compliant | ✓ | ✓ |
| Warranty | 3 year | 3 year |



| | Industrial Modbus Gateways | |
|--------------------|--|--|
| | TI-M42 | TI-M12 |
| Ports | 4 x Serial (DB-9), 2 x 10/100Mbps | 1 x Serial (DB-9), 2 x 10/100Mbps |
| Serial connections | RS-232, RS-422, RS-485 | RS-232, RS-422, RS-485 |
| Temperature | -40° – 75° C (-40° – 167° F) | -40° – 75° C (-40° – 167° F) |
| Housing | IP30 | IP30 |
| Mounting | DIN-Rail, Wall | DIN-Rail, Wall |
| Power supply | TI-S15052, TI-S24052, TI-M6024, 48VDC3000* | TI-S15052, TI-S24052, TI-M6024, 48VDC3000* |
| TAA/NDAA compliant | ✓ | ✓ |
| Warranty | 3 year | 3 year |



| | Serial Converters | |
|----------------|---|---|
| | TI-S400 | TI-S100 |
| Interface | 1 x DB9 Female RS-232 to RS-422/RS485 (per unit), 1 x Terminal block (per unit) | 1 x DB9 Female RS-232 to RS-422/RS485, 1 x Terminal block |
| Temperature | 0° – 40° C (32° – 104° F) | 0° – 40° C (32° – 104° F) |
| NDAA compliant | ✓ | ✓ |
| Warranty | 1 year | 1 year |

SMB Wireless Solutions

See more wireless solutions in the Industrial; Powerline; and Routers & Adapters sections.



Workplace connectivity is crucial for efficient and productive offices. TRENDnet's reliable SMB wireless solutions keep you connected to what's important.



Business Routers

Ensures optimal performance, scalability, and protection for your network. Features advanced content filtering with Bark.

Hardware Controllers

Designed to simplify management and setup processes for up to 128 TRENDnet access points. Supports seamless WiFi roaming.

Indoor & Outdoor Access Points

Indoor APs to maximize WiFi coverage and minimize dead spots. Outdoor APs for surveillance systems and building-to-building connectivity.

Français:

La connectivité sur le lieu de travail est essentielle pour des bureaux efficaces et productifs. Les solutions WiFi fiables de TRENDnet pour les PME vous permettent de rester connecté à l'essentiel. La gamme WiFi PME avancée de TRENDnet comprend des routeurs professionnels, des contrôleurs matériels et des points d'accès intérieurs et extérieurs.

Deutsch:

Die Konnektivität am Arbeitsplatz ist für effiziente und produktive Büros unabdingbar. Mit den zuverlässigen SMB-Wireless-Lösungen von TRENDnet bleiben Sie in Verbindung mit dem, was wichtig ist. Das erweiterte SMB Wi-Fi-Portfolio von TRENDnet umfasst Business-Router, Hardware-Controller und Access Points für den Innen- und Außenbereich.

Português:

A conectividade no local de trabalho é crucial para escritórios eficientes e produtivos. As soluções sem fio SMB da TRENDnet são confiáveis e mantêm você conectado ao que é importante. O avançado portfólio SMB WiFi da TRENDnet inclui roteadores comerciais, controladores de hardware e pontos de acesso internos e externos.

Español:

La conectividad en el entorno de trabajo resulta crucial para lograr unas oficinas eficientes y productivas. Las soluciones wireless confiables para PyMES de TRENDnet le mantienen conectado a lo más importante. La serie de productos WiFi avanzados para PyMES de TRENDnet abarca routers empresariales, controladores de hardware, así como puntos de acceso interiores y exteriores.

PoE Access Points



| | Outdoor | | | | Indoor | | | |
|------------------------------------|---|---|--|---|--------------------------------------|---|---|---|
| | TEW-840APB0 | TEW-840APB02K | TEW-740APB0 | TEW-740APB02K | TEW-923DAP | TEW-921DAP | TEW-823DAP | TEW-821DAP |
| Features | Point-to-Point / CPE | Preconfigured, Point-to-Point, Bridge Kit | Point-to-Point / CPE | Preconfigured, Point-to-Point, Bridge Kit | WiFi 6 AX3000 | WiFi 6 AX1800 | Wireless AC1300 | Wireless Wave 2 AC1200 |
| Max. data rate / WiFi band | 867Mbps / 5GHz AC | | 300Mbps / 2.4GHz N | | 2402Mbps / 5GHz 574Mbps / 2.4GHz | 1201Mbps / 5GHz AX 567Mbps / 2.4GHz AX | 867Mbps / 5GHz AC 400Mbps / 2.4GHz N | 867Mbps / 5GHz AC 300Mbps / 2.4GHz N |
| Ports | 1 x Gigabit Proprietary PoE, 1 x Gigabit LAN2 | | 1 x 10/100Mbps Proprietary PoE, 1 x 10/100Mbps LAN2 | | 1 x Gigabit PoE | 1 x Gigabit PoE+ | 1 x Gigabit PoE | 1 x Gigabit PoE |
| Antenna strength | 14 dBi directional | | 10 dBi directional | | 2.4GHz: 2 x 3 dBi 5GHz: 2 x 4 dBi | 2.4GHz: 2 x 3.2 dBi 5GHz: 2 x 4.3 dBi | 2.4GHz: 2 x 3 dBi 5GHz: 2 x 4 dBi | 2.4GHz: 2 x 3 dBi 5GHz: 2 x 4 dBi |
| Cloud management | - | - | - | - | - | Hive compatible* | - | Hive compatible* |
| Management utility | - | - | - | - | ✓ | - | ✓ | ✓ |
| Wireless Distribution System (WDS) | ✓ | ✓ | ✓ | ✓ | ✓ | ✓ | ✓ | ✓ |
| Repeater mode | - | - | - | - | ✓ | ✓ | ✓ | ✓ |
| Client mode | Client Bridge + AP, WISP (CPE) + AP | | Client Bridge + AP, WISP (CPE) + AP | | AP Client | AP Client | AP Client | AP Client |
| Additional SSIDs | 7 | | 7 | | 16 (8 per band) | 16 (8 per band) | 16 (8 per band) | 16 (8 per band) |
| Max. encryption | WPA2 | | WPA2 | | WPA2 | WPA3 | WPA2 | WPA2 |
| Operating temp. | -20° – 60° C (-4° – 140° F) | | -20° – 60° C (-4° – 140° F) | | 0° – 40° C (32° – 104° F) | -10° – 70° C (14° – 158° F) | 0° – 40° C (32° – 104° F) | 0° – 40° C (32° – 104° F) |
| Mounting hardware | ✓ | ✓ | ✓ | ✓ | ✓ | ✓ | ✓ | ✓ |
| Housing | IP56 | | IPX6 | | IP30 | - | IP30 | IP30 |
| TAA/NDAA compliant | ✓ | ✓ | ✓ | ✓ | ✓ | ✓ | ✓ | ✓ |
| Warranty | 3 year | | 3 year | | 3 year | 3 year | 3 year | 3 year |

Wireless Presentation System



Wireless Presentation

| | TWP-100R1K | TWP-101T |
|--------------------|------------|----------|
| Resolution | 4K | 4K |
| Audio | 5.1 | 5.1 |
| WiFi range | 100 ft. | 100 ft. |
| Max. split screen | 4 | 4 |
| Max. devices | 32 | 32 |
| Chromecast support | ✓ | ✓ |
| Airplay support | ✓ | ✓ |
| Miracast support | ✓ | ✓ |
| Compatibility | HDMI | HDMI |
| TAA/NDA compliant | ✓ | ✓ |
| Warranty | 3 year | 3 year |



Wireless HDMI Extension



Multiple Platform Compatibility



Plug-and-Play



Split Screen



High-Definition Surveillance Solutions



IP Cameras

TRENDnet's large surveillance camera portfolio allows you to choose the solutions ideally suited for your project(s). TRENDnet cameras are available with a wide range of options including 4K support, PoE, night vision, tamper resistance, and other advanced features. TRENDnet cameras include free VMS software and mobile apps.

Network Video Recorders

TRENDnet's HD NVR surveillance systems are comprehensive and cost-effective camera management solutions, allowing you to easily manage your entire surveillance network from a single interface. Navigate the intuitive interface to set live view preferences, recording schedules, and advanced playback options.

Français:

La gamme de caméras de surveillance TRENDnet vous permet de choisir les solutions idéales pour vos projets. Les systèmes de surveillance NVR HD de TRENDnet sont des solutions de gestion de caméras complètes et économiques, vous permettant de gérer facilement l'ensemble de votre réseau de surveillance à partir d'une seule interface.

Deutsch:

Mit dem Überwachungskamera-Portfolio von TRENDnet können Sie die für Ihre Projekte optimal geeigneten Lösungen auszuwählen. Die HD-NVR-Überwachungssysteme von TRENDnet sind umfassende und kostengünstige Kameramanagement-Lösungen, mit denen Sie Ihr gesamtes Überwachungsnetzwerk einfach über eine einzige Schnittstelle verwalten können.

Português:

O portfólio de câmeras de vigilância da TRENDnet permite que você escolha as soluções ideais para seus projetos. Os sistemas de vigilância HD NVR da TRENDnet são soluções de gerenciamento de câmera abrangentes e econômicas, permitindo que você gerencie facilmente toda a sua rede de vigilância a partir de uma única interface.

Español:

La gama de cámaras de vigilancia de TRENDnet le permite seleccionar las soluciones más idóneas para sus proyectos. Los sistemas de vigilancia HD NVR de TRENDnet son soluciones de administración de cámaras integrales y económicas que le permiten administrar con facilidad toda su red de vigilancia desde una sola interfaz.

PoE Surveillance Cameras



| | Motorized Dome | Fixed Dome | | | |
|--------------------|---|---|--|---|---|
| | TV-IP420P | TV-IP1319PI | TV-IP1515PI | TV-IP1315PI | TV-IP1329PI |
| Features | 3MP HD Motorized Lens | 8MP 4K UHD H.265 WDR w/ Night Vision | 5MP HD H.265 w/ Night Vision | 4MP HD H.265 WDR w/ Night Vision | 4MP HD H.265 WDR w/ Night Vision |
| Connectivity | PoE | PoE | PoE | PoE | PoE |
| Free app | Mira mobile app for Android™ or iOS™ | | Sentinel mobile app for Android™ or iOS™ | Mira mobile app for Android™ or iOS™ | |
| Free software | Manage up to 256 TRENDDnet cameras with the Mira VMS software | | Manage up to 144 TRENDDnet cameras with View Manager | Manage up to 256 TRENDDnet cameras with the Mira VMS software | |
| Housing | IP66 | IP67 | IP66 | IP67 | IP67 |
| Compression | H.264, MJPEG | H.265+, H.265, H.264+, H.264, MJPEG | H.265, H.264 | H.265+, H.265, H.264+, H.264, MJPEG | |
| Max. resolution | 2048 x 1536 | 3840 x 2160 | 2592 x 1920 | 2688 x 1520 | 2560 x 1440 |
| Image sensor | 1/2.8" Progressive Scan CMOS | 1/2.5" CMOS | 1/2.7" CMOS | 1/2.8" CMOS | 1/3" CMOS |
| Lens | 2.8 – 12mm @ F1.6 – F2.7 | 2.8mm @ F1.2 | 3.6mm @ F1.6 | 4mm @ F1.2 | 4mm @ F1.2 |
| Viewing angle | 105 – 33.5° (wide-tele) | 102° | 106° | 86° | 77° |
| Zoom | 4x Optical, 16x digital, auto-focus | 4x Digital | - | 4x Digital | 4x Digital |
| Audio support | Two-way audio (audio line in/line out) | - | Built-in microphone | - | - |
| Vision | 0.01 lux | Night vision up to 30m (98 ft.) | Night vision up to 30m (98 ft.) | Night vision up to 30m (98 ft.) | Night vision up to 30m (98 ft.) |
| Pan & tilt | Motorized lens: Pan 350° & tilt 90° | Fixed position: Manually pan 355° & tilt 75° | Fixed position: Manually pan 355° & tilt 75° | Fixed position: Manually pan 355° & tilt 75° | Fixed position: Manually pan 355° & tilt 70° |
| Network | IPv4, IPv6 | IPv4, IPv6 | IPv4, IPv6 | IPv4, IPv6 | IPv4, IPv6 |
| ONVIF | Profile S | Profile S, G | Profile S | Profile S, G | Profile S |
| Power consumption | 8W max. | 9W max. | 6W max. | 9W max. | 7W max. |
| Micro SD slot | ✓ (up to 128GB) | ✓ (up to 128GB) | ✓ (up to 256GB) | ✓ (up to 128GB) | - |
| Operating temp. | -30° – 65° C (-22° – 149° F) | -30° – 60° C (-22° – 140° F) | -30° – 50° C (-22° – 122° F) | -30° – 60° C (-22° – 140° F) | -30° – 50° C (-22° – 122° F) |
| Hardware | Optional: TV-WL300* | Optional: TV-WS300* | Mounting hardware included | Optional: TV-WS300* | Mounting hardware included |
| NDAA/TAA compliant | - | - | ✓ | - | - |
| Warranty | 3 year | 3 year | 3 year | 3 year | 3 year |

* Sold separately.

PoE Surveillance Cameras



Fixed Bullet

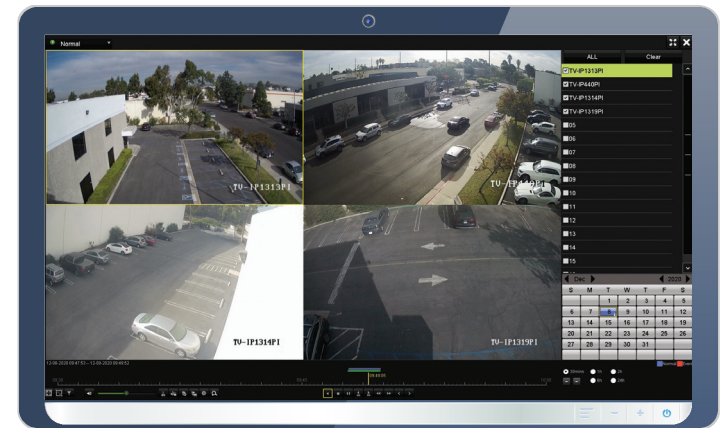
| | TV-IP1318PI | TV-IP1313PI | TV-IP1514PI | TV-IP1314PI | TV-IP1328PI |
|--------------------|--|---|---|--|----------------------------------|
| Features | 8MP 4K UHD H.265 WDR w/ Night Vision | 5MP HD H.265 WDR w/ Enhanced Night Vision | 5MP HD H.265 w/ Night Vision | 4MP HD H.265 WDR w/ Night Vision | 4MP HD H.265 WDR w/ Night Vision |
| Connectivity | PoE | PoE | PoE | PoE | PoE |
| Free app | Mira mobile app for Android™ & iOS™ | | Sentinel mobile app for Android™ or iOS™ | Mira mobile app for Android™ & iOS™ | |
| Free software | Manage up to 256 TRENDnet cameras with the Mira VMS software | | Manage up to 144 TRENDnet cameras with View Manager | Manage up to 256 TRENDnet cameras with the Mira VMS software | |
| Housing | IP67 | IP67 | IP66 | IP67 | IP67 |
| Compression | H.265+, H.265, H.264+, H.264, MJPEG | | H.265, H.264 | H.265+, H.265, H.264+, H.264, MJPEG | |
| Max. resolution | 3840 x 2160 | 2944 x 1656 | 2592 x 1920 | 2688 x 1520 | 2560 x 1440 |
| Image sensor | 1/2.5" CMOS | 1/2.9" CMOS | 1/2.7" CMOS | 1/3" CMOS | 1/3" CMOS |
| Lens | 2.8mm @ F1.2 | 4mm @ F1.2 | 3.6mm @ F1.6 | 4mm @ F1.2 | 4mm @ F1.2 |
| Viewing angle | 102° | 63.5° | 106° | 78° | 77° |
| Zoom | 4x Digital | 4x Digital | - | 4x Digital | 4x Digital |
| Audio support | - | - | Built-in microphone | - | - |
| Night vision | Up to 30m (98 ft.) | Up to 80m (262 ft.) | Up to 30m (98 ft.) | Up to 30m (98 ft.) | Up to 30m (98 ft.) |
| Network | IPv4, IPv6 | IPv4, IPv6 | IPv4, IPv6 | IPv4, IPv6 | IPv4, IPv6 |
| ONVIF | Profile S, G | | Profile S | Profile S | Profile S, G, T |
| Power consumption | 7.5W max. | 12.5W max. | 5.5W max. | 7.5W max. | 7W max. |
| Micro SD slot | ✓ (up to 128GB) | ✓ (up to 128GB) | ✓ (up to 256GB) | ✓ (up to 128GB) | - |
| Operating temp. | -30° – 60° C (-22° – 140° F) | -30° – 60° C (-22° – 140° F) | -30° – 50° C (-22° – 122° F) | -30° – 60° C (-22° – 140° F) | -30° – 50° C (-22° – 122° F) |
| Hardware | Mounting hardware included | | | | |
| NDAA/TAA compliant | - | - | ✓ | - | - |
| Warranty | 3 year | 3 year | 3 year | 3 year | 3 year |

Network Video Recorders



H.265 4K NVRs

| | TV-NVR416 | TV-NVR408 | TV-NVR1508 |
|--------------------|--|---|---|
| Features | Advanced camera viewing, recording, and playback | | |
| Channels | 16 | 8 | 8 |
| PoE budget | 150W | 80W | 60W |
| Hard drive | 2 x SATA up to 6TB each | 2 x SATA up to 6TB each | 1 x 3.5 HDD up to 10TB |
| Video interface | 1 x HDMI, 1 x VGA | 1 x HDMI, 1 x VGA | 1 x HDMI, 1 x VGA |
| USB ports | 2 x USB 2.0 | 2 x USB 2.0 | - |
| Recording time* | Approx. one month of continuous 1080p HD recording | Over one month of continuous 1080p HD recording | Over one month of continuous 1080p HD recording |
| Viewing modes | 3 x 3, 1+7, 1+5, 2 x 2 | 3 x 3, 1+7, 1+5, 2 x 2 | 1, 4, 8, 9 |
| PTZ support | ✓ | ✓ | ✓ |
| Audio support | ✓ | ✓ | ✓ |
| Web GUI interface | ✓ | ✓ | ✓ |
| Export file type | H.265, H.264, MPEG4 | H.265, H.264, MPEG4 | H.265, H.264 |
| Mobile app | ✓ | ✓ | ✓ |
| Compatible cameras | Compatible with TRENDnet & third-party PoE cameras | | |
| Mounting | Rack | Rack | Rack |
| NDAA/TAA compliant | - | - | ✓ |
| Warranty | 2 year | 2 year | 2 year |



Advanced Playback



Storage Support



Centralized Management



Free Mobile Apps



Simple Remote Access



Multi-Camera Live View

*Based on maximum camera channels and maximum storage capacity.

Fiber Media Converters



| | Intelligent Gigabit Multi-Mode | | 100Mbps Multi-Mode | |
|----------------------|---|-----------------------|--|--|
| | TFC-1000MSC | TFC-1000MGA | TFC-110MST | TFC-110MSC |
| Description | Intelligent 1000BASE-T to 1000BASE-SX Multi-Mode SC | 100/1000BASE-T to SFP | 100BASE-TX to 100BASE-FX Multi-Mode ST | 100BASE-TX to 100BASE-FX Multi-Mode SC |
| Fiber mode | Multi | Single, Multi | Multi | Multi |
| Fiber connector | Duplex SC | SFP | Duplex ST | Duplex SC |
| Distance | 550m (1800 ft.) | Based on SFP | 2km (1.2 mi.) | 2km (1.2 mi.) |
| Wavelength | 850nm | Based on SFP | 1300nm | 1300nm |
| TFC-1600 compatible | ✓ | ✓ | ✓ | ✓ |
| Standalone converter | ✓ | ✓ | ✓ | ✓ |
| LLR dip switch | ✓ | ✓ | - | - |
| Duplex dip switch | ✓ | ✓ | ✓ | ✓ |
| TAA compliant | - | - | ✓ | ✓ |
| NDA compliant | ✓ | ✓ | ✓ | ✓ |
| Warranty | 3 year | 3 year | 3 year | 3 year |

Intelligent WDM Single-Mode

Fiber modes: Simplex SC
 Fiber connections: Gigabit, 100Mbps
 Distances: 60km (37.3 mi.), 40km (24.9 mi.), 20km (12.4 mi.), 10km (6.2 mi.)



Single-Mode

Fiber modes: Duplex SC
 Fiber connections: Gigabit, 100Mbps
 Distances: 70km (43.5 mi.), 60km (37.3 mi.), 50km (31 mi.), 30km (18.6 mi.), 20km (12.4 mi.), 15km (9.3 mi.)
 Wavelengths: 1550nm, 1310nm



| | Fiber Chassis | | |
|-------------------|---|---|---|
| | TFC-1600 | TFC-1600MM | TFC-1600RP |
| Description | TRENDnet's 16-Bay Fiber Chassis System provides housing for up to 16 TFC series media converters. | Supports management of media converters & power supplies installed in the TFC-1600. Provides instant access to cooling fan & power supply status; allows user to configure & monitor chassis. | Hot swappable 100-240 VAC redundant power supply. Built-in over voltage & short circuit protection. Power supply backup for TFC-1600. |
| TAA/NDA compliant | ✓ | ✓ | ✓ |
| Warranty | 3 year | 3 year | 3 year |

Fiber SFP Modules

See more Fiber solutions in the Multi-Gigabit and Industrial sections.



Multi-Mode

Interface: Duplex LC
 Distances: 2km (1.2 mi.), 550m (1,804 ft.)
 Speeds: 1.25Gbps, 155Mbps



WDM Single-Mode

Interface: Simplex LC
 Distances: 80km (49.7 mi.), 40km (24.8 mi.), 20km (12.4 mi.), 10km (6.2 mi.)
 Speed: 1.25Gbps



Copper

Interface: RJ-45
 Distance: 100m (328 ft.)
 Speed: 1.25Gbps



Single-Mode

Interface: Duplex LC
 Distances: 80km (49.7 mi.), 40km (24.8 mi.), 20km (12.4 mi.), 10km (6.2 mi.)
 Speeds: 1.25Gbps, 155Mbps

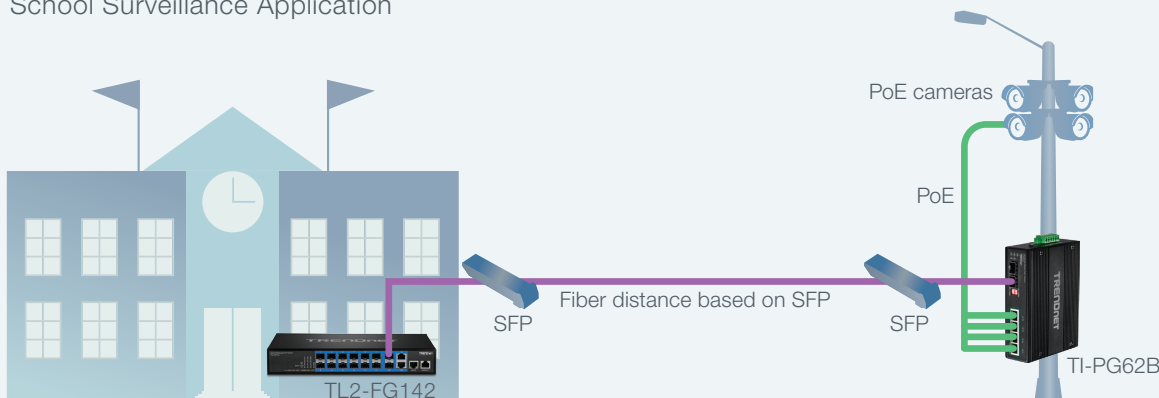


Layer 2 Managed SFP Switch

TL2-FG142

| | |
|---------------------------------------|---|
| Ports | 14 x SFP, 2 x Shared RJ-45 Gigabit, 1 x RJ-45 Fast Ethernet Management, 1 x RJ-45 Console |
| Switching capacity | 28Gbps |
| Ram buffer | 128MB |
| Forwarding rate (64-byte packet size) | 20.8Mpps |
| Mac address table | 8K |
| VLAN | Asymmetric, port-based, multiple management assignment, up to 256 VLAN groups, 802.1Q, dynamic GVRP, private, voice |
| ACL | IPv4 L2-L4 & IPv6 |
| Ipv6 | ✓ |
| Static IP routing | ✓ |
| Dos prevention | ✓ |
| 802.1ab LLDP | ✓ |
| 802.1x | ✓ |
| Dynamic GVRP | ✓ |
| LACP (802.3ad) | ✓ |
| RMON | ✓ |
| CoS (802.1p) | ✓ |
| Spanning tree | STP, RSTP, MSTP |
| Multicast (IGMP) | v1, v2, v3 |
| SNMP | v1, v2c, v3 |
| Port-based link aggregation | ✓ |
| Jumbo frame support | 9.6KB |
| Fan | Fanless |
| Mounting | Rack |
| TAA/NDAA compliant | ✓ |
| Warranty | 3 year |

School Surveillance Application



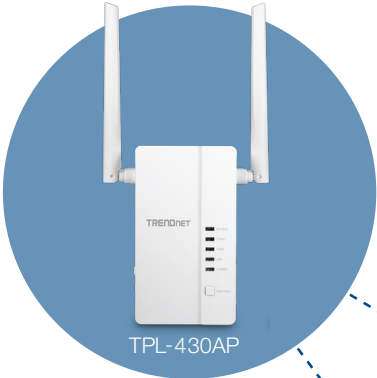
Powerline: Networking Over Electrical Lines



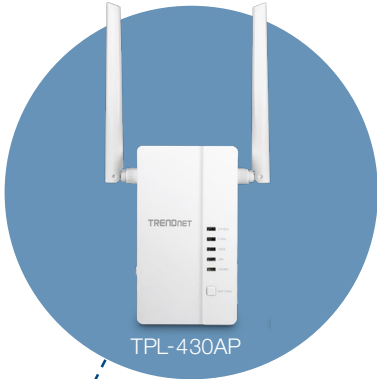
WiFi Everywhere™ Powerline 1200

TPL-430AP

| | |
|--------------------|--|
| Max. speed | 1200Mbps |
| Specification | AV2 |
| Port(s) | 3 x Gigabit |
| Powerline coverage | 300m / 984 ft. linear distance over electrical lines |
| Power savings | ✓ |
| Features | Extend your network w/ built-in AC1200 wireless |
| NDA compliant | ✓ |
| Warranty | 3 year |



TPL-430AP



TPL-430AP



Routers & Adapters



WiFi Access Point

TEW-638APB

| | |
|-----------------------------|---------------------|
| Wireless rating | N300 |
| Max. data rate / Wi-Fi band | 300Mbps / 2.4GHz |
| Ports | 1 x 10/100Mbps |
| Features | Detachable antennas |
| USB port | - |
| Guest network | - |
| Pre-encrypted | - |
| Bark* | - |
| TAA compliant | ✓ |
| NDA compliant | ✓ |
| Warranty | 3 year |



See more wireless solutions in the Industrial; SMB Wireless; and Powerline sections.

WiFi Adapters

Bluetooth® Adapter

| | TEW-905UB | TEW-805UBH | TEW-808UBM | TBW-110UB |
|----------------------------|-----------------------------|--|----------------------------|---------------|
| Device | USB Adapter | USB Adapter | USB Adapter | USB Adapter |
| Wireless rating | AX1800 | AC1200 | AC1200 | Bluetooth 5.0 |
| Max. data rate / WiFi band | 1201Mbps / AX + 573Mbps / N | 867Mbps / AC + 300Mbps / N | 867Mbps / AC + 300Mbps / N | - |
| Device interface | USB 3.0 Gen 1 | USB 3.1 Gen 1 | USB 2.0 | USB 2.0 |
| Features | MU-MIMO, compact | Adjustable high-gain external antenna, WPS button, LED indicator | MU-MIMO, compact | Compact |
| OS compatibility | Windows® | Windows® & Mac® | Windows® & Mac® | Windows® |
| TAA compliant | ✓ | ✓ | ✓ | - |
| NDA compliant | ✓ | ✓ | ✓ | ✓ |
| Warranty | 3 year | 3 year | 3 year | 3 year |

Rackmount KVM & KVM Accessories



Rackmount KVM

| | TK-1603R | TK-803R |
|----------------------|------------------------|---|
| Computer connections | 16 | 8 |
| Display input | VGA | VGA |
| Max. resolution | 2048 x 1536 | 2048 x 1536 |
| Keyboard / mouse | USB, PS/2 | USB, PS/2 |
| Features | Compact 1U rack height | Adjustable auto-scan and audible feedback |
| TAA /NDAA compliant | ✓ | ✓ |
| Warranty | 2 year | 2 year |



VGA Monitor



HD Video Resolution



USB & PS/2



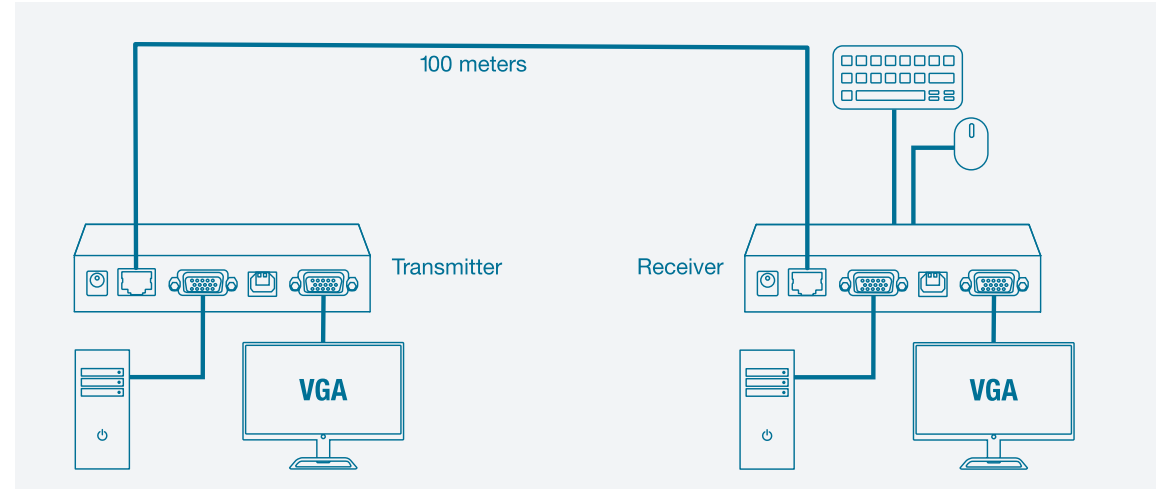
Rackmount Design



KVM Extender

| | TK-EX4 |
|----------------|------------------------------|
| Description | KVM Extension Kit |
| Features | Extends up to 100m (328 ft.) |
| NDAA compliant | ✓ |
| Warranty | 2 year |

KVM Extension Diagram



Desktop KVM



| | DisplayPort | | | | | HDMI | USB Share Switch |
|----------------------|-----------------------------|------------------------------------|----------------------|----------------------|---------------------|-------------------------|---|
| | TK-440DP | TK-240DP | TK-441DP | TK-241DP | TK-220DPi | TK-215i | TK-U404 |
| Computer connections | 4 | 2 | 4 | 2 | 2 | 2 | - |
| Monitor port | 2 x DisplayPort 1.2 | 2 x DisplayPort 1.2 | 1 x DisplayPort 1.2 | 1 x DisplayPort 1.2 | 1 x DisplayPort 1.2 | HDMI | - |
| Max. resolution | 3840 x 2160 | 3840 x 2160 | 3840 x 2160 | 3840 x 2160 | 3840 x 2160 | 1920 x 1080 | - |
| Keyboard / mouse | USB | USB | USB | USB | USB | USB | USB |
| Audio support | ✓ | ✓ | ✓ | ✓ | ✓ | ✓ | ✓ |
| Features | Dual monitor | Bonus 2-port USB hub, dual monitor | Bonus 2-port USB hub | Bonus 2-port USB hub | PC toggle switch | Ergonomic toggle switch | 4 x USB device ports, Ergonomic toggle switch |
| Cables | 2 x TK-DP06/2, 4 x TK-CP06* | 1x TK-DP06/2, 2 x TK-CP06* | 4 x TK-CP06* | 2 x TK-CP06* | Integrated | Integrated | Included |
| TAA compliant | ✓ | ✓ | ✓ | ✓ | ✓ | - | - |
| NDA compliant | ✓ | ✓ | ✓ | ✓ | ✓ | ✓ | ✓ |
| Warranty | 2 year | 2 year | 2 year | 2 year | 2 year | 2 year | 2 year |



| | VGA | | | |
|----------------------|--------------------|--------------------|--------------------|--------------------|
| | TK-409K | TK-407K | TK-209K | TK-207K |
| Computer connections | 4 | 4 | 2 | 2 |
| Monitor port | VGA | VGA | VGA | VGA |
| Max. resolution | 2048 x 1536 @ 60Hz | 2048 x 1536 @ 60Hz | 2048 x 1536 @ 60Hz | 2048 x 1536 @ 60Hz |
| Keyboard / mouse | USB | USB | USB | USB |
| Audio support | ✓ | - | ✓ | - |
| Features | Hot key commands | Hot key commands | Top seller | Hot key commands |
| Cables | Included | Included | Included | Included |
| NDA compliant | ✓ | ✓ | ✓ | ✓ |
| Warranty | 2 year | 2 year | 2 year | 2 year |

*Sold separately.

USB-C & USB



| | USB-C Adapters | USB-C Hubs | | USB 3.0 | | | |
|---------------|-----------------------------------|------------------------------------|-----------------------------|-----------------------------|--------------------------------------|-----------------------------|-----------------------------|
| | TUC-ETG | TUC-ETGH3 | TUC-H4E | TU3-ETG | TU3-ETGH3 | TU3-H4E | TU3-H4 |
| Description | USB-C to Gigabit Ethernet Adapter | USB-C to Gigabit Adapter + USB Hub | 4-Port USB-C Ultra-Mini Hub | USB 3.0 to Gigabit Adapter | USB 3.0 to Gigabit Adapter + USB Hub | 4-Port USB 3.0 Hub | 4-Port USB 3.0 Hub |
| Features | Windows® & Mac® compatible* | Windows® & Mac® compatible* | Windows® & Mac® compatible* | Windows® & Mac® compatible* | Windows® & Mac® compatible* | No CD installation required | No CD installation required |
| TAA compliant | - | - | - | ✓ | ✓ | ✓ | ✓ |
| NDA compliant | ✓ | ✓ | ✓ | - | - | - | - |
| Warranty | 2 year | 2 year | 2 year | 2 year | 2 year | 2 year | 2 year |



| | USB 2.0 | RS-232 Serial Converters | | |
|---------------|-----------------------------|-------------------------------------|---|--|
| | TU2-ET100 | TU-S4 | TU-S9 | TU-S9E |
| Description | USB to Ethernet Adapter | USB to Serial Hub | USB to Serial Converter | Ethernet to Serial Converter |
| Features | Windows® & Mac® compatible* | Converts to 4 x RS-232 serial ports | Converts to RS-232 serial port, Windows® & Mac® compatible* | Converts a serial device to a network device |
| NDA compliant | ✓ | ✓ | ✓ | ✓ |
| Warranty | 2year | 2 year | 2 year | 2 year |

Contact TRENDnet

Headquarters Address

20675 Manhattan Place
Torrance, CA 90501
USA

www.TRENDnet.com

Main Phone Number

310-961-5500

info@trendnet.com



Toll Free Number

888-326-6061

Department

North America Sales
(US, Canada, UK)

Extension 1

sales@trendnet.com

International Sales

Extension 2

intlsales@trendnet.com (EMEA, APAC)
latam@trendnet.com (LATAM)

Marketing

marketing@trendnet.com

Customer Service

Extension 3

Online Feedback System
www.trendnet.com/company/feedback/

Pre-Sales

Extension 4

Technical Support

866-845-3673

Online Help Desk Ticket System
www.trendnet.com/support/helpdesk

All references to speed are for comparison purposes only. Product specifications, size, and shape are subject to change without notice, and actual product appearance may differ from that depicted herein. Some information may have changed since the printing of this catalog. For the latest product information and to view our complete product line, please visit our website. © Copyright 2023 TRENDnet, Inc. All Rights Reserved.

