



TRENDNET[®]

— PRODUCT CATALOG —

SWITCHES - PoE - INDUSTRIAL - WIRELESS - SURVEILLANCE - FIBER - POWERLINE - KVM - USB

About TRENDnet	3	SMB Wireless	26
Switches	5	Business Routers	
Managed & Unmanaged Switches		Wireless Controllers	
TRENDnet Hive, Network Cloud Manager		Indoor & Outdoor Access Points	
Multi-Gigabit: 2.5G/5G/10G	10	Wireless Presentation System	
Web Smart & Unmanaged Switches		TRENDnet Hive, Network Cloud Manager	See Switches
Network Adapters		Surveillance	31
10G SFP+ Modules		IP Cameras / Network Cameras	
2.5G WiFi 6 Router.....	See SMB Wireless	Network Video Recorders	
PoE.....	14	Fiber	35
Managed & Unmanaged Switches		IP Power Distribution	37
Smart Surveillance Switches		Powerline.....	38
Long Range & High-Power PoE Switches		MoCA.....	39
Injectors / Splitters / Extenders		Routers & Adapters.....	40
Multi-Gigabit PoE Switches	See Multi-Gigabit	KVM.....	41
Access Points	See SMB Wireless	USB-C & USB.....	43
IP Cameras & NVRs.....	See Surveillance	Contact TRENDnet	45
Industrial	20		
Managed & Unmanaged Switches			
Front Access & EN50155 Switches			
Fiber Media Converters & SFP Modules			
Wireless Routers			
Modbus Gateways			

TRENDnet's vision is to build innovative, easy-to-use, and reliable Networks People Trust™. TRENDnet solutions network countless devices to enable your connected lifestyle and workplace. Building award-winning networking solutions since 1990, TRENDnet connects you with what you value most. Founded in Torrance, California, TRENDnet has grown to become a leading global networking hardware brand.





TRENDnet[®]

Price-to-Performance Leader

Multi-Award-Winning Product Line

Demonstrated Reliability

Exceptional Product Quality

Comprehensive Customer Support

Pre-Sales Engineering Support

Experienced Technical Support Team

Français:

La vision de TRENDnet est de construire des réseaux novateurs, simples à utiliser et fiables sur lesquels les gens peuvent compter. Les solutions de TRENDnet mettent en réseaux d'innombrables périphériques qui simplifient votre style de vie et votre travail en ligne. En créant depuis 1990 des solutions de mise en réseau primées, TRENDnet vous connecte avec ce que vous avez de plus précieux. Fondé à Torrance, Californie, TRENDnet a grandi pour devenir une marque internationale de matériel, leader de la mise en réseau. TRENDnet est leader en matière de rapport qualité/prix, avec une ligne de produits primés, une fiabilité démontrée, une qualité de produits exceptionnelle, un service clientèle complet, une assistance en soutien en ingénierie d'avant-vente et des services d'assistance technique de premier plan.

Deutsch:

TRENDnet hat es sich zum Ziel gesetzt, innovative, einfach zu verwendende und zuverlässige Netzwerke zu erstellen, denen die Kunden vertrauen (Networks People Trust™). Die Lösungen von TRENDnet vernetzen unzählige Geräte, um Ihnen ein verbundenes Leben und Arbeiten zu ermöglichen. TRENDnet schafft seit 1990 preisgekrönte Netzwerklösungen und verbindet Sie mit dem, was Ihnen am wichtigsten ist. Seit der Gründung in Torrance, Kalifornien, ist TRENDnet zu einer weltweit führenden Netzwerkhardwaremarke geworden. TRENDnet verfügt über ein führendes Preis-Leistungsverhältnis mit einer mehrfach ausgezeichneten Produktreihe und erwiesener Zuverlässigkeit, herausragender Produktqualität, umfassendem Kundendienst, Engineering-Unterstützung vor dem Verkauf und erstklassigem technischen Support.

Português:

O objetivo da TRENDnet é sempre criar redes inovadoras, fáceis de usar e confiáveis. Soluções de rede da TRENDnet são compostas por inúmeros dispositivos para garantir o seu estilo de vida e trabalho conectados. Com soluções de rede premiadas desde 1990, com a TRENDnet você se conecta com o que você mais valoriza. Fundada em Torrance, Califórnia, a TRENDnet cresceu e se tornou uma marca líder de dispositivos de rede. A TRENDnet é líder na relação custo-desempenho, com uma multipremiada linha de produtos, confiabilidade, excepcional qualidade dos produtos, suporte ao cliente, suporte pré-vendas e serviços de suporte técnico premium.

Español:

La visión de TRENDnet es crear redes innovadoras, de fácil uso y de confianza (Networks People Trust™). Las soluciones de TRENDnet conectan en red los numerosos dispositivos que le permiten mantener su modo de vida y de trabajo conectados. TRENDnet, con sus premiadas soluciones de red desde 1990, le conecta con lo que usted más valora. Fundada en Torrance, California, TRENDnet ha crecido hasta convertirse en una marca líder en el mundo en hardware de redes. TRENDnet es líder en la relación precio/rendimiento, con una línea de productos galardonada con múltiples premios, solidez contrastada, calidad excepcional en sus productos, soporte integral al cliente, soporte de ingeniería previo a la venta y servicios de soporte técnico de primera categoría.

Layer 2 Managed



Web Smart



Advanced Management

TRENDnet's Layer 2 switch solutions include premier managed features such as CLI, PoE control, access control lists, VLAN, IGMP snooping, QoS, RMON, SNMP trap, and syslog for monitoring and flexible network integration.

For more sophisticated networks, Web Smart switches support advanced management features such as traffic management controls, IP routing, VLAN, QoS, access controls, link aggregation, troubleshooting, SNMP monitoring, per port MAC restriction, and dynamic ARP inspection.

Français:

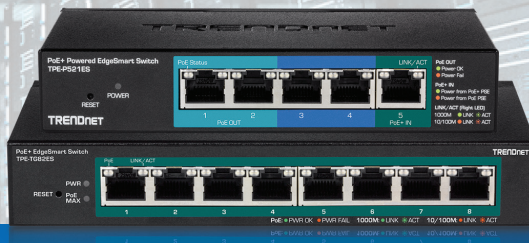
Les switches non gérés sont conçus pour augmenter simplement la densité des ports. Les switches EdgeSmart de TRENDnet offrent une gestion de l'interface graphique Web avec les fonctionnalités les plus courantes des switches gérés. Les switches Web Smart prennent en charge des fonctions plus avancées et les switches de couche 2 de TRENDnet incluent des fonctions de gestion de premier ordre pour une meilleure surveillance et une intégration réseau flexible.

Deutsch:

Unverwaltete Switches wurden entwickelt, um die Portdichte einfach zu erhöhen. Die EdgeSmart-Switches von TRENDnet ermöglichen Web-GUI-Verwaltung mit den gängigsten Funktionen verwalteter Switches. Web-Smart-Switches unterstützen erweiterte Funktionen, und die Layer-2-Switches von TRENDnet bieten erstklassige verwaltete Funktionen für bessere Überwachung und flexible NetzwerkinTEGRATION.

See more switches in the Multi-Gigabit, PoE, and Industrial sections.

EdgeSmart



Unmanaged



Unmanaged

TRENDnet's EdgeSmart switches feature web GUI management with just the most commonly used managed switch features such as VLAN, IGMP snooping, QoS, and link aggregation. This helps to reduce unnecessary switch complexity.

To help boost network efficiency and eliminate network congestion, unmanaged switches are designed to simply increase port density. Installation is plug and play with no special requirements or configuration needed.

Português:

Switches não gerenciados são projetados para simplesmente aumentar a densidade de portas. Os switches EdgeSmart da TRENDnet apresentam gerenciamento web GUI com os recursos mais comuns dos switches gerenciados. Os switches Web Smart suportam recursos mais avançados, e os switches Layer 2 da TRENDnet incluem gerenciamento dos principais recursos para um melhor monitoramento e integração da rede.

Español:

Los switches no administrados están diseñados para aumentar la densidad de puertos con facilidad. Los switches EdgeSmart de TRENDnet ofrecen administración GUI web con las funciones de switches administrados más frecuentes. Los switches Web Smart admiten funciones más avanzadas, y los switches de Capa 2 de TRENDnet ofrecen funciones administradas superiores para lograr una mejor monitorización y una integración de red flexible.

L2 Managed & Web Smart Switches

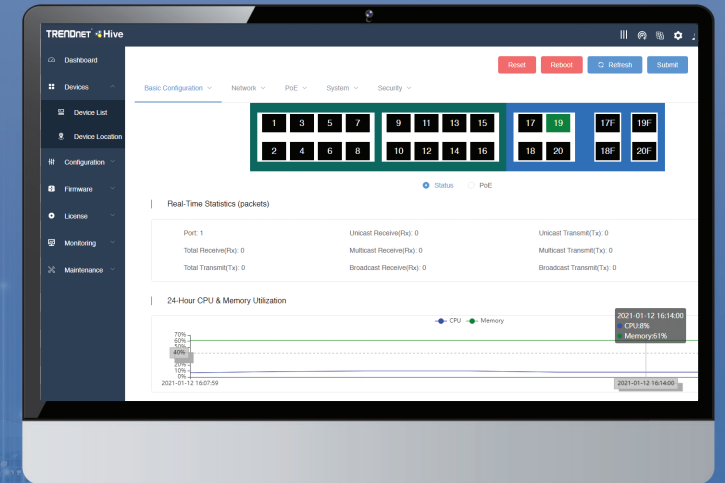


	L2 Fiber	L2 Managed	Web Smart			
	TL2-FG142	TL2-G244	TEG-524WS	TEG-284WS	TEG-204WS	TEG-082WS
Ports	14 x SFP, 2 x Shared RJ-45 Gigabit, 1 x RJ-45 Fast Ethernet Management, 1 x RJ-45 Console	20 x Gigabit, 4 x Shared Gigabit (RJ-45/SFP), 1 x RJ-45 Console	48 x Gigabit, 4 x Shared Gigabit (RJ-45/SFP)	24 x Gigabit, 4 x Shared Gigabit (RJ-45/SFP)	16 x Gigabit, 4 x Shared Gigabit (RJ-45/SFP)	8 x Gigabit, 2 x SFP
Switching capacity	28Gbps	48Gbps	104Gbps	56Gbps	40Gbps	20Gbps
RAM buffer	128MB	1MB	1.5MB	512KB	512KB	512KB
Forwarding rate (64-byte packet size)	20.8Mpps	35.7Mpps	77.4Mpps	41.7Mpps	29.8Mpps	14.9Mpps
MAC address table	8K	16K	16K	8K	8K	8K
VLAN	Asymmetric, port-based, multiple management assignment, up to 256 VLAN groups, 802.1Q, dynamic GVRP, private, voice	Asymmetric, port-based, 802.1Q, private, voice, GVRP, MAC-based, protocol-based	Asymmetric, port-based, 802.1Q, private, voice, GVRP			
ACL	IPv4 L2-L4 & IPv6	IPv4 L2-L4 & IPv6	IPv4 L2-L4 & IPv6	IPv4 L2-L4 & IPv6	IPv4 L2-L4 & IPv6	IPv4 L2-L4 & IPv6
IPv6	✓	✓	✓	✓	✓	✓
Static IP routing	✓	-	✓	✓	✓	✓
DoS prevention	✓	✓	✓	✓	✓	✓
802.1ab LLDP	✓	✓	✓	✓	✓	✓
802.1X	✓	✓	✓	✓	✓	✓
Dynamic GVRP	✓	✓	✓	✓	✓	✓
Port trunking	LACP	LACP	LACP	LACP	LACP	LACP
RMON	✓	✓	✓	✓	✓	✓
CoS (802.1p)	✓	✓	✓	✓	✓	✓
Spanning tree	STP, RSTP, MSTP	STP, RSTP, MSTP	STP, RSTP, MSTP	STP, RSTP, MSTP	STP, RSTP, MSTP	STP, RSTP, MSTP
Multicast (IGMP)	v1, v2, v3	v1, v2, v3	v1, v2, v3	v1, v2, v3	v1, v2, v3	v1, v2, v3
SNMP	v1, v2c, v3	v1, v2c, v3	v1, v2c, v3	v1, v2c, v3	v1, v2c, v3	v1, v2c, v3
Jumbo frames	9.6KB	10KB	10KB	10KB	10KB	10KB
Fan	Fanless	Fanless	Fanless	Fanless	Fanless	Fanless
Mounting	Rack	Rack	Rack	Rack	Rack	Rack
Cloud management	-	-	Hive compatible**	Hive compatible**	Hive compatible**	Hive compatible**
TAA/NDAA compliant	✓	✓	✓	✓	✓	✓
Warranty	Lifetime*	Lifetime*	Lifetime*	Lifetime*	Lifetime*	Lifetime*



Network Cloud Manager

- Centralized management
- Hassle-free remote monitoring
- Intuitive alerts and notifications
- Reduce management time and costs
- Easily scalable for future expansions & upgrades
- Free mobile app support



Learn more and sign up at trendnet.com/hive

Unmanaged Switches



Gigabit Unmanaged Metal

	TEG-S25	TEG-S24g	TEG-S25D	TEG-S24Dg	TEG-S17	TEG-S16g	TEG-S17D	TEG-S16Dg
Ports	24 x Gigabit	24 x Gigabit	24 x Gigabit	24 x Gigabit	16 x Gigabit	16 x Gigabit	16 x Gigabit	16 x Gigabit
Switching capacity	48Gbps	48Gbps	48Gbps	48Gbps	32Gbps	32Gbps	32Gbps	32Gbps
RAM buffer	512KB	512KB	512KB	512KB	512KB	512KB	512KB	512KB
MAC address table	8K	8K	8K	8K	8K	8K	8K	8K
Jumbo frames	9KB	10KB	9KB	10KB	9KB	10KB	9KB	10KB
GREENnet	-	✓	-	✓	-	✓	-	✓
Internal power	✓	✓	✓	✓	✓	✓	✓	✓
Mounting	Rack	Rack	Rack	ETH-11MK**	Rack	Rack	Rack	ETH-11MK**
TAA/NDA compliant	✓	✓	✓	✓	✓	✓	✓	✓
Warranty	Lifetime*	Lifetime*	Lifetime*	Lifetime*	Lifetime*	Lifetime*	Lifetime*	Lifetime*



Gigabit Unmanaged Metal

10/100 Unmanaged Plastic

	TEG-S83	TEG-S82g	TEG-S80g	TEG-S51	TEG-S50g	TEG-S51SFP	TE100-S8	TE100-S5
Ports	8 x Gigabit	8 x Gigabit	8 x Gigabit	5 x Gigabit	5 x Gigabit	4 x Gigabit, 1 x SFP	8 x 10/100Mbps	5 x 10/100Mbps
Switching capacity	16Gbps	16Gbps	16Gbps	10Gbps	10Gbps	10Gbps	1.6Gbps	1Gbps
RAM buffer	192KB	192KB	192KB	128KB	128KB	128KB	56KB	56KB
MAC address table	4K	4K	4K	2K	2K	2K	1K	1K
Jumbo frames	9KB	9KB	9KB	9KB	9KB	9KB	-	-
GREENnet	-	✓	✓	-	✓	-	✓	✓
Internal power	-	-	-	-	-	-	-	-
Mounting	-	Wall	Wall	-	Wall	Magnet	-	-
TAA compliant	✓	✓	✓	✓	✓	✓	-	-
NDA compliant	✓	✓	✓	✓	✓	✓	✓	✓
Warranty	Lifetime*	Lifetime*	Lifetime*	Lifetime*	Lifetime*	Lifetime*	3 year	3 year

Multi-Gigabit Networking

See a Multi-Gigabit WiFi 6 Router in the SMB Wireless section.

TRENDnet's high-performance 10G, 5G, and 2.5G network solutions are built to support high-bandwidth network applications, helping to **reduce traffic-causing bottlenecks and improve network efficiency**. Well-suited for edge layer switching, our Multi-Gigabit switches, and 10G SFP+ solutions are used in a wide-array of SMB applications, including large scale surveillance networks and camera installations.



Gigabit

Multi-Gig

Français:

Les solutions réseau haute performance 10G et 2,5G de TRENDnet sont conçues pour prendre en charge les applications réseau à large bande passante, ce qui contribue à réduire les goulots d'étranglement et à améliorer l'efficacité du réseau. Bien adaptés à la commutation des couches marginales, nos switches Multi-Gigabit et nos solutions SFP+ 10G sont utilisés dans un large éventail d'applications pour les PME, notamment les réseaux de surveillance à grande échelle et les installations de caméras.

Deutsch:

Die leistungsstarken 10G- und 2,5G-Netzwerklosungen von TRENDnet unterstützen Netzwerkanwendungen mit hoher Bandbreite und helfen, Engpässe zu reduzieren und die Netzwerkeffizienz zu verbessern. Unsere Multi-Gigabit-Switches und 10G SFP+-Lösungen eignen sich hervorragend für den Einsatz in einer Vielzahl von SMB-Anwendungen, einschließlich großer Überwachungsnetzwerke und Kamerainstallationen.

Português:

As soluções de rede 10G e 2.5G de alto desempenho da TRENDnet foram desenvolvidas para suportar aplicações de rede que demandem uma grande largura de banda, ajudando a reduzir o gargalo e melhorar a eficiência da rede. Adequado para comutação na camada de borda, nossos switches Multi-Gigabit e soluções 10G SFP+ são usados em uma ampla gama de aplicações SMB, incluindo redes de vigilância em grande escala e instalações de câmeras.

Español:

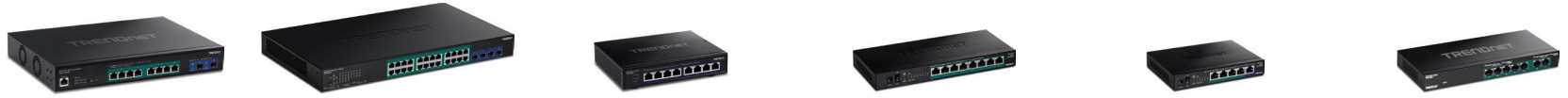
Las soluciones de red de alto rendimiento 10G y 2.5G de TRENDnet están concebidas para admitir aplicaciones de red de alto ancho de banda, lo cual contribuye a reducir los cuellos de botella y aumenta la eficiencia de la red. Nuestros switches Multi-Gigabit y soluciones 10G SFP+ son ideales para conmutación en capa de extremo y se utilizan en un amplio abanico de aplicaciones para PyMES, entre ellas las redes de vigilancia a gran escala y las instalaciones de cámaras.

Multi-Gigabit Switches



	10G Web Smart Switches			10G Unmanaged				2.5G Unmanaged		
	TEG-7124WS	TEG-3102WS	TEG-30284	TEG-S708	TEG-S750	TEG-S762	TEG-30262	TEG-S380	TEG-S350	TEG-S327
Ports	8 x 10G, 4 x 10G SFP+	8 x 2.5G, 2 x 10G SFP+	24 x Gigabit, 4 x 10G SFP+	8 x 10G	5 x 10G	4 x 2.5G, 2 x 10G	24 x Gigabit, 2 x 10G SFP+	8 x 2.5G	5 x 2.5G	2 x 2.5G, 5 x Gigabit
Switching capacity	240Gbps	80Gbps	128Gbps	160Gbps	60Gbps	60Gbps	88Gbps	40Gbps	25Gbps	20Gbps
PoE power budget	-	-	-	-	-	-	-	-	-	-
RAM buffer	16MB	1.5MB	1.5MB	1.5MB	2MB	2MB	1.5MB	1.5MB	1.5MB	384KB
Forwarding rate (64-byte packet size)	178.56Mpps	178.56Mpps	95.2Mpps	115.9Mpps	44.64Mpps	44.64Mpps	65.5Mpps	29.76Mpps	18.6Mpps	14.88Mpps
MAC address table	32K	16K	16K	16K	16K	16K	16K	16K	16K	2K
VLAN	Asymmetric, port-based, 802.1Q, private, voice, GVRP			-	-	-	-	-	-	-
ACL	IPv4 L2-L4 & IPv6	IPv4 L2-L4 & IPv6	IPv4 L2-L4 & IPv6	-	-	-	-	-	-	-
IPv6	✓	✓	✓	-	-	-	-	-	-	-
Static IP routing	✓	✓	-	-	-	-	-	-	-	-
DoS prevention	✓	✓	✓	-	-	-	-	-	-	-
802.1ab LLDP	✓	✓	✓	-	-	-	-	-	-	-
802.1X	✓	✓	✓	-	-	-	-	-	-	-
Dynamic GVRP	✓	✓	✓	-	-	-	-	-	-	-
LACP (802.3ad)	✓	✓	✓	-	-	-	-	-	-	-
RMON	✓	✓	✓	-	-	-	-	-	-	-
CoS (802.1p)	✓	✓	✓	-	-	-	-	-	-	-
Spanning tree	STP, RSTP, MSTP	STP, RSTP, MSTP	STP, RSTP, MSTP	-	-	-	-	-	-	-
Multicast (IGMP)	v1, v2, v3	v1, v2, v3	v1, v2, v3	-	-	-	-	-	-	-
SNMP	v1, v2c, v3	v1, v2c, v3	v1, v2c, v3	-	-	-	-	-	-	-
Jumbo frames	10KB	10KB	10KB	12KB	9KB	9KB	10KB	12KB	12KB	15KB
Fan	Smart fan	Fanless	Fanless	1	Fanless	Fanless	Fanless	Fanless	Fanless	Fanless
Mounting	Rack	-	Rack	Rack	-	Wall	Rack	Wall	Wall	Wall
TAA compliant	✓	✓	✓	✓	✓	✓	-	✓	✓	✓
NDAA compliant	✓	✓	✓	✓	✓	✓	✓	✓	✓	✓
Warranty	Lifetime*	Lifetime*	Lifetime*	Lifetime*	Lifetime*	Lifetime*	Lifetime*	Lifetime*	Lifetime*	Lifetime*

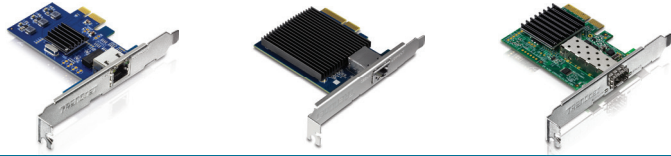
Multi-Gigabit PoE+ Switches



	10G Web Smart PoE+		2.5G PoE+ Unmanaged			
	TPE-3102WS	TPE-30284	TPE-BG380	TPE-TG380	TPE-TG350	TPE-TG327
Ports	8 x 2.5G, 2 x 10G SFP+	24 x Gigabit PoE+, 4 x 10G SFP+	8 x 2.5G PoE++	8 x 2.5G PoE+	4 x 2.5G PoE+, 1 x 2.5G PoE+	2 x 2.5G PoE+, 5 x Gigabit PoE+
Switching capacity	80Gbps	128Gbps	40Gbps	40Gbps	25Gbps	20Gbps
PoE power budget	240W	370W	130W	100W	55W	70W
RAM buffer	1.5MB	1.5MB	1MB	1.5MB	1.5MB	384KB
Forwarding rate (64-byte packet size)	178.56Mpps	95.2Mpps	29.76Mpps	29.76Mpps	18.6Mpps	14.88Mpps
MAC address table	16K	16K	4K	16K	16K	2K
VLAN	Asymmetric, port-based, 802.1Q,private, voice, GVRP	-	-	-	-	-
ACL	IPv4 L2-L4 & IPv6	IPv4 L2-L4 & IPv6	-	-	-	-
IPv6	✓	✓	-	-	-	-
Static IP routing	✓	-	-	-	-	-
DoS prevention	✓	✓	-	-	-	-
802.1ab LLDP	✓	✓	-	-	-	-
802.1X	✓	✓	-	-	-	-
Dynamic GVRP	✓	✓	-	-	-	-
LACP (802.3ad)	✓	✓	-	-	-	-
RMON	✓	✓	-	-	-	-
CoS (802.1p)	✓	✓	-	-	-	-
Spanning tree	STP, RSTP, MSTP	STP, RSTP, MSTP	-	-	-	-
Multicast (IGMP)	v1, v2, v3	v1, v2, v3	-	-	-	-
SNMP	v1, v2c, v3	v1, v2c, v3	-	-	-	-
Jumbo frames	10KB	10KB	12KB	12KB	12KB	15KB
Fan	Smart fans	Smart fans	Fanless	Fanless	Fanless	Fanless
Mounting	Rack	Rack	Wall	Wall	Wall	Wall
TAA/NDAA compliant	✓	✓	✓	✓	✓	✓
Warranty	Lifetime*	Lifetime*	Lifetime*	Lifetime*	Lifetime*	Lifetime*

*See warranty policy at TRENDnet.com.

Multi-Gigabit Network Adapters & 10G SFP+ Modules



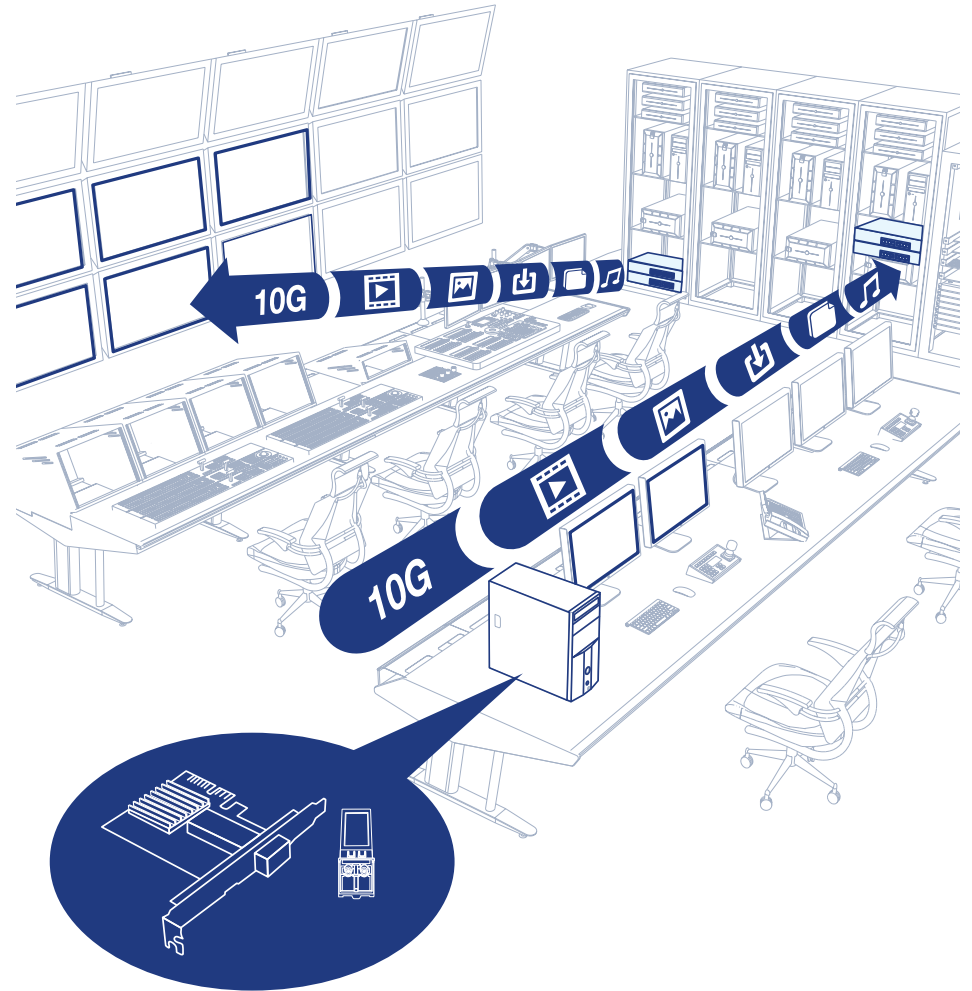
2.5G & 10G Network Adapters

	TEG-25GECTX	TEG-10GECTX	TEG-10GECSFP
Ports	1 x 2.5GBASE-T	1 x 10G BASE-T	1 x 10G SFP+
Speed	2.5Gbps, 1Gbps, 100Mbps	10Gbps, 5Gbps, 2.5Gbps, 1Gbps, 100Mbps	10Gbps
Features	Includes standard and low-profile brackets		
Form connector	PCIe 2.0 x 1	PCIe 2.0 x 4	PCIe 2.0 x 4
802.1Q VLAN	✓	✓	✓
Jumbo frames support	9KB	16KB	16KB
OS compatibility	Windows®, Windows® Server		
TAA compliant	✓	✓	-
NDA compliant	✓	✓	✓
Warranty	3 year	3 year	3 year



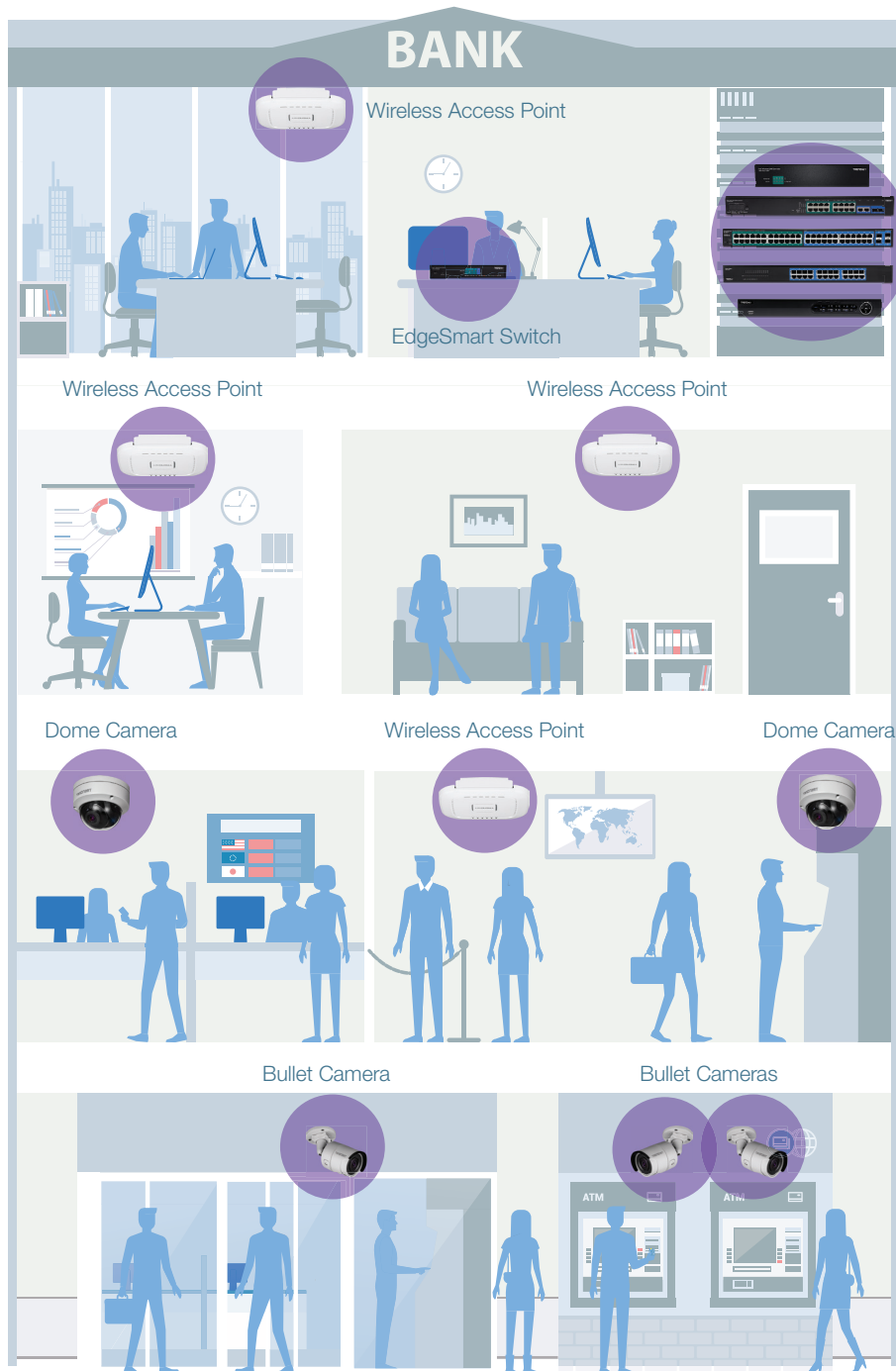
10G Fiber SFP+ Modules

	TEG-10GBS40	TEG-10GBS10	TEG-10GBSR
Date rate	10 Gigabit	10 Gigabit	10 Gigabit
Fiber mode	Single	Single	Multi
Distance	40km (24.9 mi.)	10km (6.2 mi.)	550m (1804 ft.)
Digital Diagnostics Monitoring (DDM)	✓	✓	✓
Wavelength	1550nm	1310nm	850nm
TAA/NDA compliant	✓	✓	✓
Warranty	Lifetime*	Lifetime*	Lifetime*



TEG-10GECSFP + TEG-10GBSR

PoE: Flexibility & Savings



- AP Controller
- Smart Surveillance Switch
- L2 Managed Switch
- Unmanaged Switch
- Network Video Recorder

Save on setup costs and installation time by delivering power and data over a single Ethernet cable to PoE devices such as IP cameras and access points. In addition to reduced cost and time, PoE has several other benefits including flexibility for remote installations, network scalability, and managed controls. PoE delivers 15.4 watts of power per port; PoE+ delivers 30 watts; and PoE++ delivers up to 95 watts of power per port.

See more PoE switches in the Multi-Gigabit and Industrial sections; see a PoE+ router in the Industrial section; see PoE access points in the SMB Wireless section; and see PoE cameras and NVRs in the Surveillance section.

Français:

Economisez sur les coûts d'installation et sur le temps d'installation en fournissant l'alimentation et les données sur un seul câble Ethernet aux dispositifs PoE tels que les caméras IP et les points d'accès. Outre la réduction des coûts et du temps, le PoE offre plusieurs autres avantages, dont la souplesse pour les installations à distance, l'évolutivité du réseau et les contrôles gérés.

Deutsch:

Sparen Sie Einrichtungskosten und Installationszeit, indem Sie Strom und Daten über ein einziges Ethernet-Kabel an PoE-Geräte wie IP-Kameras und Access Points liefern. Zusätzlich zu Kosten- und Zeitersparnis bietet PoE eine Reihe weiterer Vorteile, darunter Flexibilität für Remote-Installationen, Netzwerk-Skalierbarkeit und verwaltete Steuerungen.

Português:

Economize nos custos e no tempo de instalação fornecendo energia e dados através de um único cabo Ethernet para dispositivos PoE, como câmeras IP e pontos de acesso. Além de reduzir custos e tempo, o PoE tem vários outros benefícios, incluindo flexibilidade para instalações remotas, escalabilidade de rede e controles gerenciados.

Español:

Ahorre gastos y tiempo de instalación suministrando alimentación y datos mediante un solo cable Ethernet a dispositivos PoE como cámaras IP y puntos de acceso. Además de ahorrar gastos y tiempo, la tecnología PoE ofrece otras ventajas, como flexibilidad para instalaciones remotas, escalabilidad de red y controles administrados.

Smart Surveillance Switches



ONVIF® Conformant
Profile Q



PoE Self-Healing
PoE device
auto-recovery &
power scheduling



Manage Cameras
from switch interface



Real-Time Data
for monitoring &
troubleshooting



Extend PoE Signal
up to 656 ft./200m
at 10Mbps



Front Panel LED
displays PoE power
statistics



Gigabit Web Smart PoE+

	TPE-3018LS	TPE-3012LS
Ports	16 x Gigabit PoE+, 2 x Shared Gigabit (RJ-45/SFP)	8 x Gigabit PoE+, 2 x Gigabit, 2 x SFP
PoE budget	220W	110W
Max. power per port	30W	30W
Switching capacity	36Gbps	24Gbps
RAM buffer	512KB	512KB
Forwarding rate	26.7Mpps	17.8Mpps
MAC address table	8K	8K
VLAN	Asymmetric, port-based, 802.1Q, private, voice, GVRP	
ACL	IPv4 L2-L4 & IPv6	IPv4 L2-L4 & IPv6
IPv6	✓	✓
DoS prevention	✓	✓
802.1ab LLDP	✓	✓
802.1X	✓	✓
Spanning tree	STP, RSTP, MSTP	STP, RSTP, MSTP
Multicast (IGMP)	v1, v2, v3	v1, v2, v3
SNMP	v1, v2c, v3	v1, v2c, v3
Port-based link aggregation	✓	✓
Mounting	Rack	Rack
Fan	Smart fan	Fanless
TAA/NDAA compliant	✓	✓
Warranty	Lifetime*	Lifetime*

*See warranty policy at TRENDnet.com.

Managed PoE Switches



Gigabit Web Smart PoE+

	TPE-5048WS	TPE-5240WS	TPE-5028WS	TPE-2840WS	TPE-1620WSF	TPE-1620WS	TPE-1021WS	TPE-082WS
Ports	48 x Gigabit PoE+, 4 x Shared Gigabit (RJ-45/SFP)	48 x Gigabit PoE+, 4 x Shared Gigabit (RJ-45/SFP)	24 x Gigabit PoE+, 4 x Shared Gigabit (RJ-45/SFP)	24 x Gigabit PoE+, 4 x Shared Gigabit (RJ-45/SFP)	16 x Gigabit PoE+, 4 x Shared Gigabit (RJ-45/SFP)	16 x Gigabit PoE+, 4 x Shared Gigabit (RJ-45/SFP)	8 x Gigabit PoE+, 2 x SFP	8 x Gigabit PoE+, 2 x SFP
PoE budget	740W	370W	370W	185W	370W	185W	130W	75W
Max. power per port	30W	30W	30W	30W	30W	30W	30W	30W
Switching capacity	104Gbps	104Gbps	56Gbps	56Gbps	40Gbps	40Gbps	20Gbps	20Gbps
RAM buffer	1.5MB	1.5MB	512KB	512KB	512KB	512KB	512KB	512KB
Forwarding rate	77.4Mpps	77.4Mpps	41.7Mpps	41.7Mpps	29.8Mpps	29.8Mpps	14.9Mpps	14.9Mpps
MAC address table	16K	16K	8K	8K	8K	8K	8K	8K
VLAN	Asymmetric, port-based, 802.1Q, private, voice, GVRP, multicast							
ACL	IPv4 L2-L4 & IPv6	IPv4 L2-L4 & IPv6	IPv4 L2-L4 & IPv6	IPv4 L2-L4 & IPv6	IPv4 L2-L4 & IPv6	IPv4 L2-L4 & IPv6	IPv4 L2-L4 & IPv6	IPv4 L2-L4 & IPv6
IPv6	✓	✓	✓	✓	✓	✓	✓	✓
Static IP routing	✓	✓	✓	✓	✓	✓	✓	✓
DoS prevention	✓	✓	✓	✓	✓	✓	✓	✓
802.1ab LLDP	✓	✓	✓	✓	✓	✓	✓	✓
802.1X	✓	✓	✓	✓	✓	✓	✓	✓
Spanning tree	STP, RSTP, MSTP	STP, RSTP, MSTP	STP, RSTP, MSTP	STP, RSTP, MSTP	STP, RSTP, MSTP	STP, RSTP, MSTP	STP, RSTP, MSTP	STP, RSTP, MSTP
Multicast (IGMP)	v1, v2, v3	v1, v2, v3	v1, v2, v3	v1, v2, v3	v1, v2, v3	v1, v2, v3	v1, v2, v3	v1, v2, v3
SNMP	v1, v2c, v3	v1, v2c, v3	v1, v2c, v3	v1, v2c, v3	v1, v2c, v3	v1, v2c, v3	v1, v2c, v3	v1, v2c, v3
Port-based link aggregation	✓	✓	✓	✓	✓	✓	✓	✓
Mounting	Rack	Rack	Rack	Rack	Rack	Rack	Rack	Rack
Fan	Smart fans	Smart fans	Smart fans	Smart fans	Smart fans	Smart fans	Fanless	Fanless
Cloud management	Hive compatible**	Hive compatible**	Hive compatible**	Hive compatible**	Hive compatible**	Hive compatible**	Hive compatible**	Hive compatible**
TAA/NDAA compliant	✓	✓	✓	✓	✓	✓	✓	✓
Warranty	Lifetime*	Lifetime*	Lifetime*	Lifetime*	Lifetime*	Lifetime*	Lifetime*	Lifetime*

*See warranty policy at TRENDnet.com.

**Additional fee applies.

⊘ Not available in Europe / UK.

Managed PoE Switches & PoE Solutions



	10/100 Web Smart PoE+	Gigabit EdgeSmart PoE+	EdgeSmart PoE Powered
	TPE-224WS	TPE-TG82ES	TPE-P521ES
Ports	4 x 10/100Mbps PoE+, 20 x 10/100Mbps PoE, 2 x Gigabit, 2 x Shared Gigabit (RJ-45/SFP)	8 x Gigabit PoE+	1 x Gigabit PoE+ in, 2 x Gigabit PoE out, 2 x Gigabit
PoE budget	193W	64W	18W (PoE+ in), 8W (PoE in)
Max. power per port	30W	30W	18W
Switching capacity	12.8Gbps	16Gbps	10Gbps
RAM buffer	512KB	192KB	512KB
Forwarding rate	9.5Mpps	11.9Mpps	7.4Mpps
MAC address table	8K	4K	2K
VLAN	Asymmetric, port-based, 802.1Q, private, voice, GVRP	Asymmetric, port-based, 802.1Q, private, voice	Asymmetric, port-based, 802.1Q, private, voice
ACL	IPv4 L2-L4 & IPv6	-	-
IPv6	✓	-	-
DoS prevention	✓	-	-
802.1ab LLDP	✓	-	-
802.1X	✓	-	-
Spanning tree	STP, RSTP, MSTP	STP, RSTP	STP, RSTP
Multicast (IGMP)	v1, v2, v3	v1, v2, v3	v1, v2, v3
SNMP	v1, v2c, v3	v1, v2c	v1, v2c
Port-based link aggregation	✓	✓	✓
Mounting	Rack	Wall	Wall
Fan	Smart fans	Fanless	Fanless
TAA compliant	✓	✓	✓
NDAA compliant	✓	✓	✓
Warranty	Lifetime*	Lifetime*	Lifetime*



Injectors						Splitters	Extenders		
TPE-319GI	TPE-215GI	TPE-147GI	TPE-119GI	TPE-117GI	TPE-115GI	TPE-104GS	TPE-BE200	TPE-E100	TPE-E110
10G PoE++ Injector	2.5G PoE+ Injector	65W 4-Port Gigabit PoE+ Injector	Gigabit PoE++ 90W Injector	Gigabit Ultra PoE 60W Injector	Gigabit PoE+ 30W Injector	Gigabit PoE Splitter	Gigabit PoE++ Extender	Gigabit PoE+ Extender	Gigabit PoE+ Extender / Amplifier
TAA/NDAA compliant	TAA/NDAA compliant	TAA/NDAA compliant	TAA/NDAA compliant	NDAA compliant	NDAA compliant	NDAA compliant	TAA/NDAA compliant	NDAA compliant	NDAA compliant
Converts a network data signal into a PoE Ethernet connection						Splits a PoE signal into separate data and power sources	Extends a PoE network connection for up to 100m (328 ft.) without the use of a power adapter		

Unmanaged PoE Switches



Gigabit PoE++

High Power PoE+

	TPE-BG182g	TPE-BG102g	TPE-TG182F	TPE-TG80F
Ports	8 x Gigabit PoE++, 8 x Gigabit PoE+, 2 x SFP	4 x Gigabit PoE++, 4 x Gigabit PoE+, 2 x SFP	16 x Gigabit PoE+, 2 x Shared Gigabit (RJ- 45/SFP)	8 x Gigabit PoE+
PoE budget	440W	240W	440W	240W
Max. power per port	95W	95W	30W	30W
Switching capacity	36Gbps	20Gbps	36Gbps	16Gbps
RAM buffer	512KB	512KB	512KB	192KB
MAC address table	8K	8K	8K	4K
Mounting	Rack	Rack	Rack	Rack
Power adapter	Internal	Internal	Internal	Internal
TAA/NDAA compliant	✓	✓	✓	✓
Warranty	Lifetime*	Lifetime*	Lifetime*	Lifetime*



Long Range PoE

	TPE-LG80	TPE-TG51g	TPE-LG50
Ports	8 x Gigabit PoE+	4 x Gigabit PoE+, 1 x Gigabit	4 x Gigabit PoE+, 1 x Gigabit
PoE budget	65W	60W	32W
Max. power per port	30W	30W	30W
Switching capacity	16Gbps	10Gbps	10Gbps
RAM buffer	192KB	128KB	128KB
MAC address table	4K	2K	2K
Mounting	Wall	Wall	Wall
Power adapter	External	External	External
TAA/NDAA compliant	✓	✓	✓
Warranty	Lifetime*	Lifetime*	Lifetime*

*See warranty policy at TRENDnet.com.

Not available in Europe / UK.

Not available in UK.

Unmanaged PoE Switches



Gigabit PoE+

	TPE-TG262	TPE-TG240g	TPE-TG182	TPE-TG160g	TPE-TG161H	TPE-TG160H	TPE-TG80g	TPE-TG84
Ports	24 x Gigabit PoE+, 2 x Gigabit SFP	24 x Gigabit PoE+	16 x Gigabit PoE+, 2 x Gigabit SFP	16 x Gigabit PoE+	16 x Gigabit PoE+	16 x Gigabit PoE+	8 x Gigabit PoE+	8 x Gigabit PoE+
PoE budget	380W	370W	240W	246W	120W	123W	123W	120W
Max. power per port	30W	30W	30W	30W	30W	30W	30W	30W
Switching capacity	52Gbps	48Gbps	36Gbps	32Gbps	32Gbps	32Gbps	16Gbps	16Gbps
RAM buffer	512KB	512KB	512KB	512KB	512KB	512KB	128KB	192KB
MAC address table	8K	8K	8K	8K	8K	8K	9K	4K
Mounting	Rack	Rack	Rack	Rack	Rack	Rack	-	Wall
Power adapter	Internal	Internal	Internal	Internal	External	External	External	External
TAA/NDAA compliant	✓	✓	✓	✓	✓	✓	✓	✓
Warranty	Lifetime*	Lifetime*	Lifetime*	Lifetime*	Lifetime*	Lifetime*	Lifetime*	Lifetime*



Gigabit PoE+

10/100 PoE+

	TPE-TG81g	TPE-TG83	TPE-TG82g	TPE-TG611	TPE-TG44g	TPE-TG50g	TPE-TG52	TPE-S50
Ports	8 x Gigabit PoE+	8 x Gigabit PoE+	8 x Gigabit PoE+	4 x Gigabit PoE+, 1 x Gigabit, 1 x SFP	4 x Gigabit PoE+, 4 x Gigabit	4 x Gigabit PoE+, 1 x Gigabit	4 x Gigabit PoE+, 1 x Gigabit	4 x 10/100Mbps PoE+, 2 x 10/100Mbps
PoE budget	110W	65W	61W	65W	61.6W	31W	32W	60W
Max. power per port	30W	30W	30W	30W	30W	30W	30W	30W
Switching capacity	16Gbps	16Gbps	16Gbps	12Gbps	16Gbps	10Gbps	10Gbps	1.2Gbps
RAM buffer	192KB	192KB	128KB	128KB	128KB	128KB	128KB	96KB
MAC address table	4K	4K	8K	2K	8K	8K	2K	2K
Mounting	Rack	Wall	-	-	-	-	Wall	Wall
Power adapter	Internal	External	External	External	External	External	External	Internal
TAA compliant	✓	✓	✓	✓	✓	✓	✓	-
NDAA compliant	✓	✓	✓	✓	✓	✓	✓	✓
Warranty	Lifetime*	Lifetime*	Lifetime*	Lifetime*	Lifetime*	Lifetime*	Lifetime*	Lifetime*

Rugged Industrial Networking



Industrial Enclosure Application

Industrial switches are often installed inside rugged enclosures with an outdoor weather rating.

TI-CA2 shown above.

TRENDnet industrial switch and fiber solutions provide dependable and hardened networking hardware for your industrial environments. With an enclosure rating of IP30/IP40, TRENDnet's industrial networking hardware is designed to withstand a high degree of vibration and shock, and extreme heat or cold.

Français:

Les solutions de switches industriels et de fibres TRENDnet fournissent un matériel réseau fiable et renforcé à vos environnements industriels. Avec un indice de protection IP30/IP40, le matériel de mise réseau industriel de TRENDnet est conçu pour résister à un degré élevé de vibrations et de chocs, ainsi qu'à la chaleur ou au froid extrême.

Deutsch:

Industrielle Switch- und Glasfaserlösungen von TRENDnet bieten zuverlässige und robuste Netzwerkhardware für Ihre industrielle Umgebung. Mit einer Gehäuseschutzklasse von IP30/IP40 ist die industrielle Netzwerkhardware von TRENDnet so ausgelegt, dass sie einem hohen Grad an Vibration und Schock sowie extremer Hitze oder Kälte standhält.

Português:

As soluções de fibra e switches industriais da TRENDnet fornecem um hardware de rede robusto e confiável para seus ambientes industriais. Com uma classificação de gabinete IP30/IP40, o hardware de rede industrial da TRENDnet foi projetado para suportar um alto grau de vibração, choque e calor ou frio extremos.

Español:

Las soluciones de switches industriales y de fibra de TRENDnet ofrecen un hardware de red confiable y robusto para entornos industriales. Con su carcasa con calificación IP30/IP40, el hardware de red industrial de TRENDnet está concebido para resistir un alto grado de vibraciones y golpes, así como un calor y un frío extremos.

Industrial Managed Switches



	L2+ PoE++	Industrial L2 Managed PoE+				Industrial L2 Managed		
	TI-BG62i	TI-RP262i	TI-PG1284i	TI-PG102i	TI-PG541i	TI-G160i	TI-G102i	TI-G642i
Ports	4 x Gigabit PoE++, 2 x SFP	24 x Gigabit PoE+, 2 x SFP	8 x Gigabit PoE+, 4 x Gigabit SFP, 1 x Console	8 x Gigabit PoE+, 2 x Gigabit SFP	4 x Gigabit PoE+, 1 x Gigabit, 1 x SFP	16 x Gigabit	8 x Gigabit, 2 x SFP	4 x Gigabit, 2 x SFP
PoE budget	360W	685W	240W	240W @ 48V input, 124W @ 24V input	120W	-	-	-
Max. power per port	95W	30W	30W	30W	30W	-	-	-
Switching capacity	12Gbps	52Gbps	24Gbps	20Gbps	12Gbps	32Gbps	20Gbps	12Gbps
RAM buffer	512MB	512KB	128MB	128MB	128MB	128MB	128MB	128MB
Forwarding rate	8.9Mpps	38.7Mpps	17.86Mpps	14.8Mpps	8.93Mpps	23.8Mpps	14.88Mpps	18.9Mpps
MAC address table	16K	8K	16K	8K	8K	8K	8K	8K
VLAN	802.1Q, port-based, MAC-based, Q-in-Q VLAN, port isolation	Port-based, 802.1Q, MAC-based, port isolation	802.1Q, port-based, MAC-based, Q-in-Q VLAN, port isolation	Port-based, 802.1Q, MAC-based, port isolation	Port-based, 802.1Q, MAC-based, port isolation	Port-based, 802.1Q, MAC-based, port isolation	Port-based, 802.1Q, MAC-based, port isolation	Port-based, 802.1Q, MAC-based, port isolation
ACL	IPv4 L2-L4	IPv4 L2-L4	IPv4 L2-L4	IPv4 L2-L4	IPv4 L2-L4	IPv4 L2-L4	IPv4 L2-L4	IPv4 L2-L4
IPv6	IPv6 static IP address, DHCPv6 client	-	IPv6 static IP address, DHCPv6 client	-	-	-	-	-
802.1ab LLDP	✓	✓	✓	✓	✓	✓	✓	✓
802.1X	✓	✓	✓	✓	✓	✓	✓	✓
Spanning tree	STP, RSTP, MSTP	STP, RSTP	STP, RSTP, MSTP	STP, RSTP	STP, RSTP	STP, RSTP	STP, RSTP	STP, RSTP
ERPS	✓	✓	✓	✓	✓	✓	✓	✓
Multicast (IGMP)	v1, v2, v3	v1, v2, v3	v1, v2, v3	v1, v2, v3	v1, v2, v3	v1, v2, v3	v1, v2, v3	v1, v2, v3
SNMP	v1, v2c, 3	v1, v2c, v3	v1, v2c, 3	v1, v2c, v3	v1, v2c, v3	v1, v2c, v3	v1, v2c, v3	v1, v2c, v3
Port-based link aggregation	✓	✓	✓	✓	✓	✓	✓	✓
Temperature	-40° – 75° C (-40° – 167° F)	-40° – 70° C (-40° – 158° F)	-40° – 75° C (-40° – 167° F)	-40° – 75° C (-40° – 167° F)	-40° – 75° C (-40° – 167° F)	-40° – 75° C (-40° – 167° F)	-40° – 75° C (-40° – 167° F)	-40° – 75° C (-40° – 167° F)
Housing	IP30	IP30	IP30	IP30	IP30	IP30	IP30	IP30
Mounting	DIN-Rail	Rack	DIN-Rail	DIN-Rail, Wall	DIN-Rail	DIN-Rail	DIN-Rail	DIN-Rail
Power supply	TI-S15052, TI-S24052, TI-S48048**	TI-S15052, TI-S24052, TI-RSP100048**	TI-S15052, TI-S24052, TI-S48048**	TI-S15052, TI-S24052, TI-S48048**	TI-S15052, TI-S24052, 48VDC3000, TI-S24048**	TI-S15052, TI-S24052, TI-S12048**	TI-S15052, TI-S24052, TI-M6024**	TI-S15052, TI-S24052, TI-M6024**
TAA/NDAA compliant	✓	✓	✓	✓	✓	✓	✓	✓
Warranty	Lifetime*	Lifetime*	Lifetime*	Lifetime*	Lifetime*	Lifetime*	Lifetime*	Lifetime*

Industrial Unmanaged Switches



	PoE++		Industrial Gigabit PoE+ Switches									Industrial 10/100 PoE+	
Ports	TI-BG104	TI-UPG62	TI-PG160	TI-PG162	TI-PG102	TI-PGM102	TI-PG80	TI-PG62	TI-PG541	TI-PGM541	TI-PG50	TI-PE80	TI-PE50
PoE budget	4 x Gigabit PoE++, 4 x Gigabit PoE+, 2 x Shared Gigabit (SFP or RJ-45)	4 x Gigabit PoE++, 1 x Gigabit, 2 x SFP	16 x Gigabit PoE+	14 x Gigabit PoE+, 2 x Gigabit SFP	8 x Gigabit PoE+, 2 x Shared Gigabit (RJ-45/SFP)	8 x Gigabit PoE+, 2 x Gigabit SFP	8 x Gigabit PoE+	4 x Gigabit PoE+, 1 x SFP, 1 x Shared Gigabit (RJ-45/SFP)	4 x Gigabit PoE+, 1 x Gigabit, 1 x SFP	4 x Gigabit PoE+, 1 x Gigabit SFP	4 x Gigabit PoE+, 1 x Gigabit	8 x 10/100Mbps PoE+	4 x 10/100Mbps PoE+, 1 x 10/100Mbps
Max. power per port	360W	240W	240W	240W	240W	240W	200W	120W	120W	120W	120W	200W	90W
Switching capacity	90W	90W	30W	30W	30W	30W	30W	30W	30W	30W	30W	30W	30W
RAM buffer	20Gbps	12Gbps	32Gbps	32Gbps	20Gbps	20Gbps	16Gbps	12Gbps	12Gbps	10Gbps	10Gbps	1.6Gbps	1Gbps
MAC address table	2MB	1MB	512KB	512KB	2MB	1.5MB	1MB	1MB	512KB	8KB	128KB	1MB	56KB
Temperature	11K	1K	8K	8K	16K	4K	8K	1K	8K	2K	2K	1K	1K
Housing	-40° – 75° C (-40° – 167° F)					-20° – 65° C (-4° – 149° F)		-40° – 75° C (-40° – 167° F)			-20° – 65° C (-4° – 149° F)		
Mounting	IP30	IP30	IP30	IP30	IP30	IP30	IP30	IP30	IP30	IP30	IP30	IP30	IP30
Power supply	DIN-Rail, Wall	DIN-Rail, Wall	DIN-Rail, Wall	DIN-Rail, Wall	DIN-Rail, Wall	DIN-Rail, Wall	DIN-Rail, Wall	DIN-Rail, Wall	DIN-Rail	DIN-Rail, Wall	DIN-Rail, Wall	DIN-Rail, Wall	DIN-Rail, Wall
TAA/NDAA compliant	TI-S15052, TI-S24052, TI-S24048, TI-S48048**	TI-S15052, TI-S24052, TI-S48048**	TI-S15052, TI-S24052, TI-S48048**	TI-S15052, TI-S24052, TI-S48048**	TI-S15052, TI-S24052, 48VDC3000, TI-S24048**	TI-S15052, TI-S24052, TI-S24048**	TI-S15052, TI-S24052, TI-S24048**	TI-S15052, TI-S24052, TI-S24048**	TI-S15052, TI-S24052, 48VDC3000, TI-S12048, TI-S24048**	TI-S15052, TI-S24052, TI-S12048**	TI-S15052, TI-S24052, TI-S12048**	TI-S15052, TI-S24052, TI-S24048**	TI-S15052, TI-S24052, TI-M6024, TI-S12048**
Warranty	✓	✓	✓	✓	✓	✓	✓	✓	✓	✓	✓	✓	✓
	Lifetime*	Lifetime*	Lifetime*	Lifetime*	Lifetime*	Lifetime*	Lifetime*	Lifetime*	Lifetime*	Lifetime*	Lifetime*	Lifetime*	Lifetime*



	Industrial Gigabit Switches					Industrial 10/100 Switches	
Ports	TI-G162	TI-G102	TI-G80	TI-G50	TI-G62	TI-E80	TI-E50
Switching capacity	14 x Gigabit, 2 x Gigabit SFP	8 x Gigabit, 2 x Shared Gigabit (RJ-45/SFP)	8 x Gigabit	5 x Gigabit	4 x Gigabit, 1 x SFP, 1 x Shared Gigabit (RJ-45/SFP)	8 x 10/100Mbps	5 x 10/100Mbps
RAM buffer	32Gbps	20Gbps	16Gbps	10Gbps	12Gbps	1.6Gbps	1Gbps
MAC address table	512KB	2MB	1MB	1MB	1MB	56KB	56KB
Temperature	8K	16K	8K	8K	2K	1K	1K
Housing	-40° – 75° C (-40° – 167° F)						
Mounting	IP30	IP30	IP30	IP30	IP30	IP30	IP30
Power supply	DIN-Rail, Wall	DIN-Rail, Wall	DIN-Rail, Wall	DIN-Rail, Wall	DIN-Rail, Wall	DIN-Rail, Wall	DIN-Rail, Wall
TAA/NDAA compliant	TI-S15052, TI-S24052, TI-M6024**					TI-S15052, TI-S24052, TI-M6024**	
Warranty	✓	✓	✓	✓	✓	✓	✓
	Lifetime*	Lifetime*	Lifetime*	Lifetime*	Lifetime*	Lifetime*	Lifetime*

*See warranty policy at TRENDnet.com.

**Power supply required.

Industrial Specialty Switches & PoE Solutions



	Variable Voltage		EN50155 M12 Switch	Front Access Switches			
	TI-PG80B	TI-PG62B	TI-TPG80	TI-PG102F	TI-PG80F	TI-PG62F	TI-PG50F
Ports	8 x Gigabit PoE+	4 x Gigabit PoE+, 2 x SFP	8 x M12 Gigabit PoE+	8 x Gigabit PoE+, 2 x SFP	8 x Gigabit PoE+	4 x Gigabit PoE+, 2 x Gigabit SFP	4 x Gigabit PoE+, 1 x Gigabit
PoE budget	120W – 200W	60 – 120W	200W@48V DC, 100W@24V DC	240W	200W	120W	120W
Max. power per port	30W	30W	30W	30W	30W	30W	30W
Switching capacity	16Gbps	12Gbps	16Gbps	20Gbps	16Gbps	12Gbps	10Gbps
RAM buffer	1MB	1MB	2MB	256KB	1MB	128KB	1MB
MAC address table	4K	1K	11K	16K	4K	1K	2K
Temperature	-40° – 75° C (-40° – 167° F)	-40° – 75° C (-40° – 167° F)	-40° – 75° C (-40° – 167° F)	-40° – 75° C (-40° – 167° F)	-40° – 75° C (-40° – 167° F)	-40° – 75° C (-40° – 167° F)	-40° – 75° C (-40° – 167° F)
Housing	IP30	IP30	IP30	IP30	IP30	IP30	IP30
Mounting	DIN-Rail, Wall	DIN-Rail, Wall	Wall	DIN-Rail, Wall	DIN-Rail, Wall	DIN-Rail, Magnet	DIN-Rail, Wall
Power supply	TI-S15052, TI-S24052, TI-S24048, TI-S12024**	TI-S15052, TI-S24052, TI-S12024, TI-S12048**	TI-S15052, TI-S24052, TI-S12024, TI-S12048**	TI-S15052, TI-S24052, TI-S24048, TI-S48048, 48VDC3000**	TI-S15052, TI-S24052, TI-S12048, TI-S24048, 48VDC3000**	TI-S15052, TI-S24052, TI-S24048, TI-S48048, 48VDC3000**	TI-S15052, TI-S24052, TI-S24048, TI-S48048, 48VDC3000**
TAA/NDAA compliant	✓	✓	✓	✓	✓	✓	✓
Warranty	Lifetime*	Lifetime*	Lifetime*	Lifetime*	Lifetime*	Lifetime*	Lifetime*



Industrial Gigabit PoE Injectors / Extenders / Splitter

	TI-IG290	TI-IG90	TI-IG60	TI-IG30	TI-BE200	TI-EU120	TI-BEP200	TI-E100	TI-SG104
Description	2-Port 2.5G PoE++ Injector	PoE++ Injector	UPoE Injector	PoE+ Injector	2-Port Outdoor PoE++ Extender	2-Port Outdoor UPoE Extender	2-Port Active/Passive PoE+ Extender	PoE+ Extender	UPoE Splitter
PoE budget	180W	90W	60W	30W	60W	64W	60W	30W	-
Temperature	-40 to 75 °C (-40 to 167 °F)	-40° – 75° C (-40° – 167° F)	-40° – 75° C (-40° – 167° F)	-40° – 75° C (-40° – 167° F)	-40° – 75° C (-40° – 167° F)	-40° – 75° C (-40° – 167° F)	-40° – 75° C (-40° – 167° F)	-40° – 75° C (-40° – 167° F)	-40° – 80° C (-40° – 185° F)
Housing	IP30	IP30	IP30	IP30	IP67	IP67	IP67	IP30	IP30
Mounting	DIN-Rail, Wall	DIN-Rail, Wall	DIN-Rail, Wall	DIN-Rail, Wall	Wall	Wall	Wall	DIN-Rail, Wall	DIN-Rail, Wall
Power supply	TI-S15052, TI-S24052, TI-S24048**	TI-S15052, TI-S24052, TI-S12048**	TI-S15052, TI-S24052, TI-S12048**	TI-S15052, TI-S24052, TI-S12048**	PoE++	PD power input: 30W, 60W, 95W	PoE++	TI-S15052, TI-S24052, TI-S12048**	DC output: 12V, 16V, 24V, 48V
TAA/NDAA compliant	✓	✓	✓	✓	✓	✓	✓	✓	✓
Warranty	3 year	3 year	3 year	3 year	3 year	3 year	3 year	3 year	3 year

Industrial Fiber



	Industrial Gigabit Fiber Converters			Industrial 100Mbps Fiber Converters	
	TI-UF11SFP	TI-PF11SFP	TI-F11SFP	TI-F10S30	TI-F10SC
Description	SFP to Gigabit UPoE	SFP to Gigabit PoE+	100/1000BASE-T to SFP	100BASE-FX Single-Mode SC	100BASE-FX Multi-Mode SC
Fiber mode	Based on SFP	Based on SFP	Based on SFP	Single	Multi
Fiber converter	SFP	SFP	SFP	Duplex SC	Duplex SC
PoE budget	60W	30W	-	-	-
Distance	Based on SFP	Based on SFP	Based on SFP	30km (18.6 mi.)	2km (1.2 mi.)
Temperature	-40° – 75° C (-40° – 167° F)	-40° – 75° C (-40° – 167° F)	-40° – 75° C (-40° – 167° F)	-40° – 75° C (-40° – 167° F)	-40° – 75° C (-40° – 167° F)
Housing	IP30	IP30	IP30	IP40	IP40
Wavelength	Based on SFP	Based on SFP	Based on SFP	1310nm	1310nm
Mounting	DIN-Rail, Wall	DIN-Rail, Wall	DIN-Rail, Wall	DIN-Rail, Wall	DIN-Rail, Wall
Power supply	TI-S15052, TI-S24052, TI-S12048**	TI-S15052, TI-S24052, TI-S12048**	TI-S15052, TI-S24052, TI-M6024**	TI-S15052, TI-S24052, TI-M6024**	TI-S15052, TI-S24052, TI-M6024**
TAA/NDAA compliant	✓	✓	✓	✓	✓
Warranty	3 year	3 year	3 year	Lifetime*	Lifetime*



	Industrial SFP Modules		
	TI-MGBS40	TI-MGBS10	TI-MGBSX
Fiber mode	Single (40km)	Single (10km)	Multi (550m)
TAA/NDAA compliant	✓	✓	✓
Warranty	Lifetime*	Lifetime*	Lifetime*

*See warranty policy at TRENDnet.com.

**Power supply required.

Industrial Wireless & Industrial Modbus



	Industrial PoE+ Router	Industrial Router
	TI-WP100	TI-W100
Wireless rating	AC1200	AC1200
Max. data rate / WiFi band	867Mbps (AC) + 300Mbps (N)	867Mbps (AC) + 300Mbps (N)
Ports	4 x Gigabit PoE+, 1 x Gigabit WAN	4 x Gigabit, 1 x Gigabit WAN
PoE budget	120W	-
Max. power per port	30W	-
Features	802.11ac dual band WiFi, PoE+, VPN router, Multi-WAN (Ethernet & WiFi), Modbus	802.11ac dual band WiFi, VPN router, Multi-WAN (Ethernet & WiFi), Modbus
VPN	IPsec, SSL VPN	IPsec, SSL VPN
Multi-WAN	Fail-over, load balancing	Fail-over, load balancing
Access controls	MAC filter, DMZ, Port Forwarding, SPI, IPS	MAC filter, DMZ, Port Forwarding, SPI, IPS
Management	HTTP / HTTPS, Telnet / SSH	HTTP / HTTPS, Telnet / SSH
VLAN	802.1Q VLAN, Inter-VLAN routing, multiple SSID w/ VLAN tagging	802.1Q VLAN, Inter-VLAN routing, multiple SSID w/ VLAN tagging
Scheduling	Auto power cycle, radios on/off	Auto power cycle, radios on/off
Temperature	-30° – 70° C (-22° – 158° F)	-30° – 70° C (-22° – 158° F)
Housing	IP30	IP30
Mounting	DIN-Rail	DIN-Rail
Power supply	TI-S15052, TI-S24052, TI-S12048, TI-S12024, TI-S24048**	TI-M6024**
Antenna base	TEW-LB101***	TEW-LB101***
TAA/NDAA compliant	✓	✓
Warranty	3 year	3 year



	Industrial Modbus Gateways	
	TI-M42	TI-M12
Ports	4 x Serial (DB-9), 2 x 10/100Mbps	1 x Serial (DB-9), 2 x 10/100Mbps
Serial connections	RS-232, RS-422, RS-485	RS-232, RS-422, RS-485
Temperature	-40° – 75° C (-40° – 167° F)	-40° – 75° C (-40° – 167° F)
Housing	IP30	IP30
Mounting	DIN-Rail, Wall	DIN-Rail, Wall
Power supply	TI-S15052, TI-S24052, TI-M6024, 48VDC3000**	TI-S15052, TI-S24052, TI-M6024, 48VDC3000**
TAA/NDAA compliant	✓	✓
Warranty	Lifetime*	Lifetime*



	Serial Converters	
	TI-S400	TI-S100
Interface	1 x DB9 Female RS-232 to RS-422/RS485 (per unit), 1 x Terminal block (per unit)	1 x DB9 Female RS-232 to RS-422/RS485, 1 x Terminal block
Temperature	0° – 40° C (32° – 104° F)	0° – 40° C (32° – 104° F)
NDAA compliant	✓	✓
Warranty	1 year	1 year

SMB Wireless Solutions

See more wireless solutions in the Industrial; Powerline; and Routers & Adapters sections.



Workplace connectivity is crucial for efficient and productive offices. TRENDnet's reliable SMB wireless solutions keep you connected to what's important.



Français:

La connectivité sur le lieu de travail est essentielle pour des bureaux efficaces et productifs. Les solutions WiFi fiables de TRENDnet pour les PME vous permettent de rester connecté à l'essentiel. La gamme WiFi PME avancée de TRENDnet comprend des routeurs professionnels, des contrôleurs matériels et des points d'accès intérieurs et extérieurs.

Deutsch:

Die Konnektivität am Arbeitsplatz ist für effiziente und produktive Büros unabdingbar. Mit den zuverlässigen SMB-Wireless-Lösungen von TRENDnet bleiben Sie in Verbindung mit dem, was wichtig ist. Das erweiterte SMB Wi-Fi-Portfolio von TRENDnet umfasst Business-Router, Hardware-Controller und Access Points für den Innen- und Außenbereich.

Português:

A conectividade no local de trabalho é crucial para escritórios eficientes e produtivos. As soluções sem fio SMB da TRENDnet são confiáveis e mantêm você conectado ao que é importante. O avançado portfólio SMB WiFi da TRENDnet inclui roteadores comerciais, controladores de hardware e pontos de acesso internos e externos.

Español:

La conectividad en el entorno de trabajo resulta crucial para lograr unas oficinas eficientes y productivas. Las soluciones wireless confiables para PyMES de TRENDnet le mantienen conectado a lo más importante. La serie de productos WiFi avanzados para PyMES de TRENDnet abarca routers empresariales, controladores de hardware, así como puntos de acceso interiores y exteriores.

Business Routers

Ensures optimal performance, scalability, and protection for your network. Features advanced content filtering with Bark.

Hardware Controllers

Designed to simplify management and setup processes for up to 128 TRENDnet access points. Supports seamless WiFi roaming.

Indoor & Outdoor Access Points

Indoor APs to maximize WiFi coverage and minimize dead spots. Outdoor APs for surveillance systems and building-to-building connectivity.

SMB Routers & LAN Controllers



Business Routers

Wireless LAN Controller

	TEW-929DRU	TEW-829DRU	TWG-431BR
Wireless rating	AX1800	AC3000	-
Max. data rate / WiFi band	1201Mbps (5GHz) + 574Mbps (2.4GHz)	1733Mbps (5GHz1) + 867Mbps (5GHz2) + 400Mbps (2.4GHz)	-
Ports	1 x 2.5G LAN, 2 x Gigabit LAN, 2 x Gigabit WAN, 1 x USB 2.0, 1 x RJ-45 Console	8 x Gigabit LAN, 2 x Gigabit WAN, 1 x USB 3.0, 1 x RJ-45 Console	5 x Gigabit (4WAN + 1LAN OR 4LAN + 1WAN), 1 x USB 3.0, 1 x RJ-45 Console
Features	Bark*, Multi-WAN, VPN router, rack mountable, wall mountable	Bark*, Multi-WAN, VPN router, rack mountable, wall mountable	Bark*, Multi-WAN, VPN router, rack mountable
VPN	PPTP / L2TP, L2TP w/ IPsec, IPsec, SSL VPN	PPTP / L2TP, L2TP w/ IPsec, IPsec, SSL VPN	PPTP / L2TP, L2TP w/ IPsec, IPsec, SSL VPN
Multi-WAN	Fail-over, load balancing, WAN protocol binding	Fail-over, load balancing, WAN protocol binding	Fail-over, load balancing
Access controls	Bark*, MAC / IP filter, DMZ / Port Forwarding / One-to-One NAT	Bark*, MAC / IP filter, DMZ / Port Forwarding / One-to-One NAT	Bark*, MAC / IP filter, DMZ / Port Forwarding
Management	HTTP / HTTPS, Telnet / SSH, console	HTTP / HTTPS, Telnet / SSH, console	HTTP / HTTPS, Telnet / SSH, console
VLAN	802.1Q VLAN / Inter-VLAN routing; multiple SSID w/ VLAN tagging	802.1Q VLAN / Inter-VLAN routing; multiple SSID w/ VLAN tagging	802.1Q VLAN / Inter-VLAN routing
Scheduling	Auto power cycle, auto update, radios on/off	Auto power cycle, auto update, radios on/off	Auto power cycle, auto update, WoL
TAA compliant	✓	✓	-
NDAA compliant	✓	✓	✓
Warranty	3 year	3 year	3 year

	TEW-WLC100
Features	Centralized AP management & seamless WiFi roaming
Ports	5 x Gigabit, 1 x USB
Max. APs	Up to 128
Seamless roaming	802.11k, 802.11r, OKC
AP management	Bandwidth control, IP address settings, client blacklist, grouping, provisioning, batch upgrades, RSSI threshold, SSID encryption
VLAN	802.1Q
WLAN monitoring	AP, clients, statistics
Hotspot	Customizable Captive Portal support
Map view	WAP Maps™ provide visual overview
Compatible APs	TEW-826DAP, TEW-825DAP, TEW-821DAP, TEW-755AP
NDAA compliant	✓
Warranty	3 year

Outdoor PoE Access Points



Outdoor

	TEW-841APB0	TEW-840APB0	TEW-840APB02K	TEW-740APB0	TEW-740APB02K
Features	Omni-Directional, Point-to-Point, Point-to-Multi-Point	Point-to-Point / CPE	Preconfigured, Point-to-Point, Bridge Kit	Point-to-Point / CPE	Preconfigured, Point-to-Point, Bridge Kit
Max. data rate / WiFi band	867Mbps / 5GHz AC 400Mbps / 2.4GHz N	867Mbps / 5GHz AC		300Mbps / 2.4GHz N	
Ports	1 x Gigabit PoE+	1 x Gigabit Proprietary PoE, 1 x Gigabit LAN2		1 x 10/100Mbps Proprietary PoE, 1 x 10/100Mbps LAN2	
Antenna strength	4 x 5 dBi	14 dBi directional		10 dBi directional	
Management utility	-	-		-	
Wireless Distribution System (WDS)	✓	✓		✓	
Repeater mode	-	-		-	
Client mode	Client Bridge	Client Bridge + AP, WISP (CPE) + AP		Client Bridge + AP, WISP (CPE) + AP	
Additional SSIDs	16 (8 per band)	7		7	
Max. encryption	WPA2	WPA2		WPA2	
Operating temp.	-25° – 60° C (-13° – 140° F)	-20° – 60° C (-4° – 140° F)		-20° – 60° C (-4° – 140° F)	
Mounting hardware	✓	✓		✓	
Housing	IP67	IP56		IPX6	
TAA/NDAA compliant	✓	✓		✓	
Warranty	3 year	3 year		3 year	

✖ Not available in Canada.

🌐 Not available in Europe / UK.

Indoor PoE Access Points



	Indoor						
	TEW-925DAP	TEW-923DAP	TEW-921DAP	TEW-826DAP	TEW-825DAP	TEW-823DAP	TEW-821DAP
Features	WiFi 6 AX5400	WiFi 6 AX3000	WiFi 6 AX1800	Wireless Wave 2 AC2200	Wireless AC1750	Wireless AC1300	Wireless Wave 2 AC1200
Max. data rate / WiFi band	4800Mbps / 5GHz 574Mbps / 2.4GHz	2402Mbps / 5GHz 574Mbps / 2.4GHz	1201Mbps / 5GHz AX 567Mbps / 2.4GHz AX	867Mbps / 5GHz AC1 867Mbps / 5GHz AC2 400Mbps / 2.4GHz N	1300Mbps / 5GHz AC 450Mbps / 2.4GHz N	867Mbps / 5GHz AC 400Mbps / 2.4GHz N	867Mbps / 5GHz AC 300Mbps / 2.4GHz N
Ports	1 x Gigabit PoE	1 x Gigabit PoE	1 x Gigabit PoE+	1 x Gigabit PoE+, 1 x Gigabit	1 x Gigabit PoE+	1 x Gigabit PoE	1 x Gigabit PoE
Antenna strength	2.4GHz: 2 x 3 dBi 5GHz: 2 x 4 dBi	2.4GHz: 2 x 3 dBi 5GHz: 2 x 4 dBi	2.4GHz: 2 x 3.2 dBi 5GHz: 2 x 4.3 dBi	2.4GHz: 2 x 4 dBi 5GHz1: 2 x 4 dBi 5GHz2: 2 x 4 dBi	2.4GHz: 3 x 4 dBi 5GHz: 3 x 4 dBi	2.4GHz: 2 x 3 dBi 5GHz: 2 x 4 dBi	2.4GHz: 2 x 3 dBi 5GHz: 2 x 4 dBi
Cloud management	-	-	Hive compatible**	Hive compatible**	Hive compatible**	-	Hive compatible**
Management utility	✓	✓	-	✓	✓	✓	✓
Wireless Distribution System (WDS)	✓	✓	✓	✓	✓	✓	✓
Repeater mode	✓	✓	✓	✓	✓	✓	✓
Client mode	AP Client	AP Client	AP Client	AP Client	AP Client	AP Client	AP Client
Additional SSIDs	16 (8 per band)	16 (8 per band)	16 (8 per band)	24 (8 per band)	16 (8 per band)	16 (8 per band)	16 (8 per band)
Max. encryption	WPA2	WPA2	WPA3	WPA2	WPA2	WPA2	WPA2
Operating temp.	0° – 40° C (32° – 104° F)	0° – 40° C (32° – 104° F)	-10° – 70° C (14° – 158° F)	0° – 40° C (32° – 104° F)	0° – 40° C (32° – 104° F)	0° – 40° C (32° – 104° F)	0° – 40° C (32° – 104° F)
Mounting hardware	✓	✓	✓	✓	✓	✓	✓
Housing	IP30	IP30	-	IP30	IP30	IP30	IP30
TAA/NDAA compliant	✓	✓	✓	✓	✓	✓	✓
Warranty	3 year	3 year	3 year	3 year	3 year	3 year	3 year

Wireless Presentation System



Wireless Presentation

	TWP-100R1K	TWP-101T
Resolution	4K	4K
Audio	5.1	5.1
WiFi range	100 ft.	100 ft.
Max. split screen	4	4
Max. devices	32	32
Chromecast support	✓	✓
Airplay support	✓	✓
Miracast support	✓	✓
Compatibility	HDMI	HDMI
TAA/NDA compliant	✓	✓
Warranty	3 year	3 year



Wireless HDMI Extension



Multiple Platform Compatibility



Plug-and-Play



Split Screen



High-Definition Surveillance Solutions



IP Cameras

TRENDnet's large surveillance camera portfolio allows you to choose the solutions ideally suited for your project(s). TRENDnet cameras are available with a wide range of options including 4K support, PoE, night vision, tamper resistance, and other advanced features. TRENDnet cameras include free VMS software and mobile apps.

Network Video Recorders

TRENDnet's HD NVR surveillance systems are comprehensive and cost-effective camera management solutions, allowing you to easily manage your entire surveillance network from a single interface. Navigate the intuitive interface to set live view preferences, recording schedules, and advanced playback options.

Français:

La gamme de caméras de surveillance TRENDnet vous permet de choisir les solutions idéales pour vos projets. Les systèmes de surveillance NVR HD de TRENDnet sont des solutions de gestion de caméras complètes et économiques, vous permettant de gérer facilement l'ensemble de votre réseau de surveillance à partir d'une seule interface.

Deutsch:

Mit dem Überwachungskamera-Portfolio von TRENDnet können Sie die für Ihre Projekte optimal geeigneten Lösungen auszuwählen. Die HD-NVR-Überwachungssysteme von TRENDnet sind umfassende und kostengünstige Kameramanagement-Lösungen, mit denen Sie Ihr gesamtes Überwachungsnetzwerk einfach über eine einzige Schnittstelle verwalten können.

Português:

O portfólio de câmeras de vigilância da TRENDnet permite que você escolha as soluções ideais para seus projetos. Os sistemas de vigilância HD NVR da TRENDnet são soluções de gerenciamento de câmera abrangentes e econômicas, permitindo que você gerencie facilmente toda a sua rede de vigilância a partir de uma única interface.

Español:

La gama de cámaras de vigilancia de TRENDnet le permite seleccionar las soluciones más idóneas para sus proyectos. Los sistemas de vigilancia HD NVR de TRENDnet son soluciones de administración de cámaras integrales y económicas que le permiten administrar con facilidad toda su red de vigilancia desde una sola interfaz.

PoE Surveillance Cameras



	Motorized Dome	Fixed Dome			
	TV-IP420P	TV-IP1319PI	TV-IP1515PI	TV-IP1315PI	TV-IP1329PI
Features	3MP HD Motorized Lens	8MP 4K UHD H.265 WDR w/ Night Vision	5MP HD H.265 w/ Night Vision	4MP HD H.265 WDR w/ Night Vision	4MP HD H.265 WDR w/ Night Vision
Connectivity	PoE	PoE	PoE	PoE	PoE
Free app	Mira mobile app for Android™ or iOS™		Sentinel mobile app for Android™ or iOS™	Mira mobile app for Android™ or iOS™	
Free software	Manage up to 256 TRENDnet cameras with the Mira VMS software		Manage up to 144 TRENDnet cameras with View Manager	Manage up to 256 TRENDnet cameras with the Mira VMS software	
Housing	IP66	IP67	IP66	IP67	IP67
Compression	H.264, MJPEG	H.265+, H.265, H.264+, H.264, MJPEG	H.265, H.264	H.265+, H.265, H.264+, H.264, MJPEG	
Max. resolution	2048 x 1536	3840 x 2160	2592 x 1920	2688 x 1520	2560 x 1440
Image sensor	1/2.8" Progressive Scan CMOS	1/2.5" CMOS	1/2.7" CMOS	1/2.8" CMOS	1/3" CMOS
Lens	2.8 – 12mm @ F1.6 – F2.7	2.8mm @ F1.2	3.6mm @ F1.6	4mm @ F1.2	4mm @ F1.2
Viewing angle	105 – 33.5° (wide-tele)	102°	106°	86°	77°
Zoom	4x Optical, 16x digital, auto-focus	4x Digital	-	4x Digital	4x Digital
Audio support	Two-way audio (audio line in/line out)	-	Built-in microphone	-	-
Vision	0.01 lux	Night vision up to 30m (98 ft.)	Night vision up to 30m (98 ft.)	Night vision up to 30m (98 ft.)	Night vision up to 30m (98 ft.)
Pan & tilt	Motorized lens: Pan 350° & tilt 90°	Fixed position: Manually pan 355° & tilt 75°	Fixed position: Manually pan 355° & tilt 75°	Fixed position: Manually pan 355° & tilt 75°	Fixed position: Manually pan 355° & tilt 70°
Network	IPv4, IPv6	IPv4, IPv6	IPv4, IPv6	IPv4, IPv6	IPv4, IPv6
ONVIF	Profile S	Profile S, G	Profile S	Profile S, G	Profile S
Power consumption	8W max.	9W max.	6W max.	9W max.	7W max.
Micro SD slot	✓ (up to 128GB)	✓ (up to 128GB)	✓ (up to 256GB)	✓ (up to 128GB)	-
Operating temp.	-30° – 65° C (-22° – 149° F)	-30° – 60° C (-22° – 140° F)	-30° – 50° C (-22° – 122° F)	-30° – 60° C (-22° – 140° F)	-30° – 50° C (-22° – 122° F)
Hardware	Optional: TV-WL300**	Optional: TV-WS300**	Mounting hardware included	Optional: TV-WS300**	Mounting hardware included
NDAA/TAA compliant	-	-	✓	-	-
Warranty	3 year	3 year	3 year	3 year	3 year

** Sold separately.

PoE Surveillance Cameras



Fixed Bullet

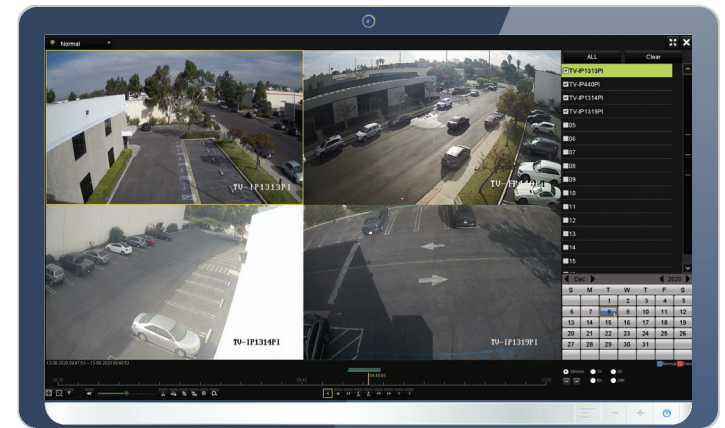
	TV-IP1318PI	TV-IP1313PI	TV-IP1514PI	TV-IP1314PI	TV-IP1328PI
Features	8MP 4K UHD H.265 WDR w/ Night Vision	5MP HD H.265 WDR w/ Enhanced Night Vision	5MP HD H.265 w/ Night Vision	4MP HD H.265 WDR w/ Night Vision	4MP HD H.265 WDR w/ Night Vision
Connectivity	PoE	PoE	PoE	PoE	PoE
Free app	Mira mobile app for Android™ & iOS™		Sentinel mobile app for Android™ or iOS™	Mira mobile app for Android™ & iOS™	
Free software	Manage up to 256 TRENDnet cameras with the Mira VMS software		Manage up to 144 TRENDnet cameras with View Manager	Manage up to 256 TRENDnet cameras with the Mira VMS software	
Housing	IP67	IP67	IP66	IP67	IP67
Compression	H.265+, H.265, H.264+, H.264, MJPEG		H.265, H.264	H.265+, H.265, H.264+, H.264, MJPEG	
Max. resolution	3840 x 2160	2944 x 1656	2592 x 1920	2688 x 1520	2560 x 1440
Image sensor	1/2.5" CMOS	1/2.9" CMOS	1/2.7" CMOS	1/3" CMOS	1/3" CMOS
Lens	2.8mm @ F1.2	4mm @ F1.2	3.6mm @ F1.6	4mm @ F1.2	4mm @ F1.2
Viewing angle	102°	63.5°	106°	78°	77°
Zoom	4x Digital	4x Digital	-	4x Digital	4x Digital
Audio support	-	-	Built-in microphone	-	-
Night vision	Up to 30m (98 ft.)	Up to 80m (262 ft.)	Up to 30m (98 ft.)	Up to 30m (98 ft.)	Up to 30m (98 ft.)
Network	IPv4, IPv6	IPv4, IPv6	IPv4, IPv6	IPv4, IPv6	IPv4, IPv6
ONVIF	Profile S, G		Profile S	Profile S	Profile S, G, T
Power consumption	7.5W max.	12.5W max.	5.5W max.	7.5W max.	7W max.
Micro SD slot	✓ (up to 128GB)	✓ (up to 128GB)	✓ (up to 256GB)	✓ (up to 128GB)	-
Operating temp.	-30° – 60° C (-22° – 140° F)	-30° – 60° C (-22° – 140° F)	-30° – 50° C (-22° – 122° F)	-30° – 60° C (-22° – 140° F)	-30° – 50° C (-22° – 122° F)
Hardware	Mounting hardware included				
NDAA/TAA compliant	-	-	✓	-	-
Warranty	3 year	3 year	3 year	3 year	3 year

Network Video Recorders



H.265 4K NVRs

	TV-NVR416	TV-NVR408	TV-NVR1508
Features	Advanced camera viewing, recording, and playback		
Channels	16	8	8
PoE budget	150W	80W	60W
Hard drive	2 x SATA up to 6TB each	2 x SATA up to 6TB each	1 x 3.5 HDD up to 10TB
Video interface	1 x HDMI, 1 x VGA	1 x HDMI, 1 x VGA	1 x HDMI, 1 x VGA
USB ports	2 x USB 2.0	2 x USB 2.0	-
Recording time*	Approx. one month of continuous 1080p HD recording	Over one month of continuous 1080p HD recording	Over one month of continuous 1080p HD recording
Viewing modes	3 x 3, 1+7, 1+5, 2 x 2	3 x 3, 1+7, 1+5, 2 x 2	1, 4, 8, 9
PTZ support	✓	✓	✓
Audio support	✓	✓	✓
Web GUI interface	✓	✓	✓
Export file type	H.265, H.264, MPEG4	H.265, H.264, MPEG4	H.265, H.264
Mobile app	✓	✓	✓
Compatible cameras	Compatible with TRENDnet & third-party PoE cameras		
Mounting	Rack	Rack	Rack
NDAA/TAA compliant	-	-	✓
Warranty	2 year	2 year	2 year



Advanced Playback



Storage Support



Centralized Management



Free Mobile Apps



Simple Remote Access



Multi-Camera Live View

*Based on maximum camera channels and maximum storage capacity.

Fiber Media Converters



	Intelligent Gigabit Multi-Mode		100Mbps Multi-Mode	
	TFC-1000MSC	TFC-1000MGA	TFC-110MST	TFC-110MSC
Description	Intelligent 1000BASE-T to 1000BASE-SX Multi-Mode SC	100/1000BASE-T to SFP	100BASE-TX to 100BASE-FX Multi-Mode ST	100BASE-TX to 100BASE-FX Multi-Mode SC
Fiber mode	Multi	Single, Multi	Multi	Multi
Fiber connector	Duplex SC	SFP	Duplex ST	Duplex SC
Distance	550m (1800 ft.)	Based on SFP	2km (1.2 mi.)	2km (1.2 mi.)
Wavelength	850nm	Based on SFP	1300nm	1300nm
TFC-1600 compatible	✓	✓	✓	✓
Standalone converter	✓	✓	✓	✓
LLR dip switch	✓	✓	-	-
Duplex dip switch	✓	✓	✓	✓
TAA compliant	-	-	✓	✓
NDA compliant	✓	✓	✓	✓
Warranty	Lifetime*	Lifetime*	Lifetime*	Lifetime*

Intelligent WDM Single-Mode

Fiber modes: Simplex SC
 Fiber connections: Gigabit, 100Mbps
 Distances: 60km (37.3 mi.), 40km (24.9 mi.), 20km (12.4 mi.), 10km (6.2 mi.)



Single-Mode

Fiber modes: Duplex SC
 Fiber connections: Gigabit, 100Mbps
 Distances: 70km (43.5 mi.), 60km (37.3 mi.), 50km (31 mi.), 30km (18.6 mi.), 20km (12.4 mi.), 15km (9.3 mi.)
 Wavelengths: 1550nm, 1310nm



	Fiber Chassis		
	TFC-1600	TFC-1600MM	TFC-1600RP
Description	TRENDnet's 16-Bay Fiber Chassis System provides housing for up to 16 TFC series media converters.	Supports management of media converters & power supplies installed in the TFC-1600. Provides instant access to cooling fan & power supply status; allows user to configure & monitor chassis.	Hot swappable 100-240 VAC redundant power supply. Built-in over voltage & short circuit protection. Power supply backup for TFC-1600.
TAA/NDA compliant	✓	✓	✓
Warranty	Lifetime*	Lifetime*	Lifetime*

Fiber SFP Modules

See more Fiber solutions in the Multi-Gigabit and Industrial sections.



Multi-Mode

Interface: Duplex LC
 Distances: 2km (1.2 mi.), 550m (1,804 ft.)
 Speeds: 1.25Gbps, 155Mbps



WDM Single-Mode

Interface: Simplex LC
 Distances: 80km (49.7 mi.), 40km (24.8 mi.), 20km (12.4 mi.), 10km (6.2 mi.)
 Speed: 1.25Gbps



Copper

Interface: RJ-45
 Distance: 100m (328 ft.)
 Speed: 1.25Gbps



Single-Mode

Interface: Duplex LC
 Distances: 80km (49.7 mi.), 40km (24.8 mi.), 20km (12.4 mi.), 10km (6.2 mi.)
 Speeds: 1.25Gbps, 155Mbps

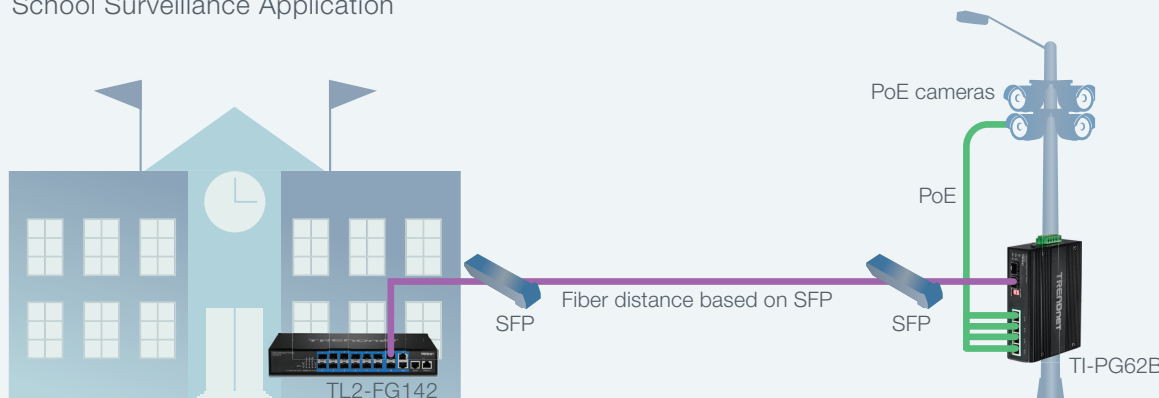


Layer 2 Managed SFP Switch

TL2-FG142

Ports	14 x SFP, 2 x Shared RJ-45 Gigabit, 1 x RJ-45 Fast Ethernet Management, 1 x RJ-45 Console
Switching capacity	28Gbps
Ram buffer	128MB
Forwarding rate (64-byte packet size)	20.8Mpps
Mac address table	8K
VLAN	Asymmetric, port-based, multiple management assignment, up to 256 VLAN groups, 802.1Q, dynamic GVRP, private, voice
ACL	IPv4 L2-L4 & IPv6
Ipv6	✓
Static IP routing	✓
Dos prevention	✓
802.1ab LLDP	✓
802.1x	✓
Dynamic GVRP	✓
LACP (802.3ad)	✓
RMON	✓
CoS (802.1p)	✓
Spanning tree	STP, RSTP, MSTP
Multicast (IGMP)	v1, v2, v3
SNMP	v1, v2c, v3
Port-based link aggregation	✓
Jumbo frame support	9.6KB
Fan	Fanless
Mounting	Rack
TAA/NDAA compliant	✓
Warranty	Lifetime*

School Surveillance Application



*See warranty policy at TRENDnet.com.

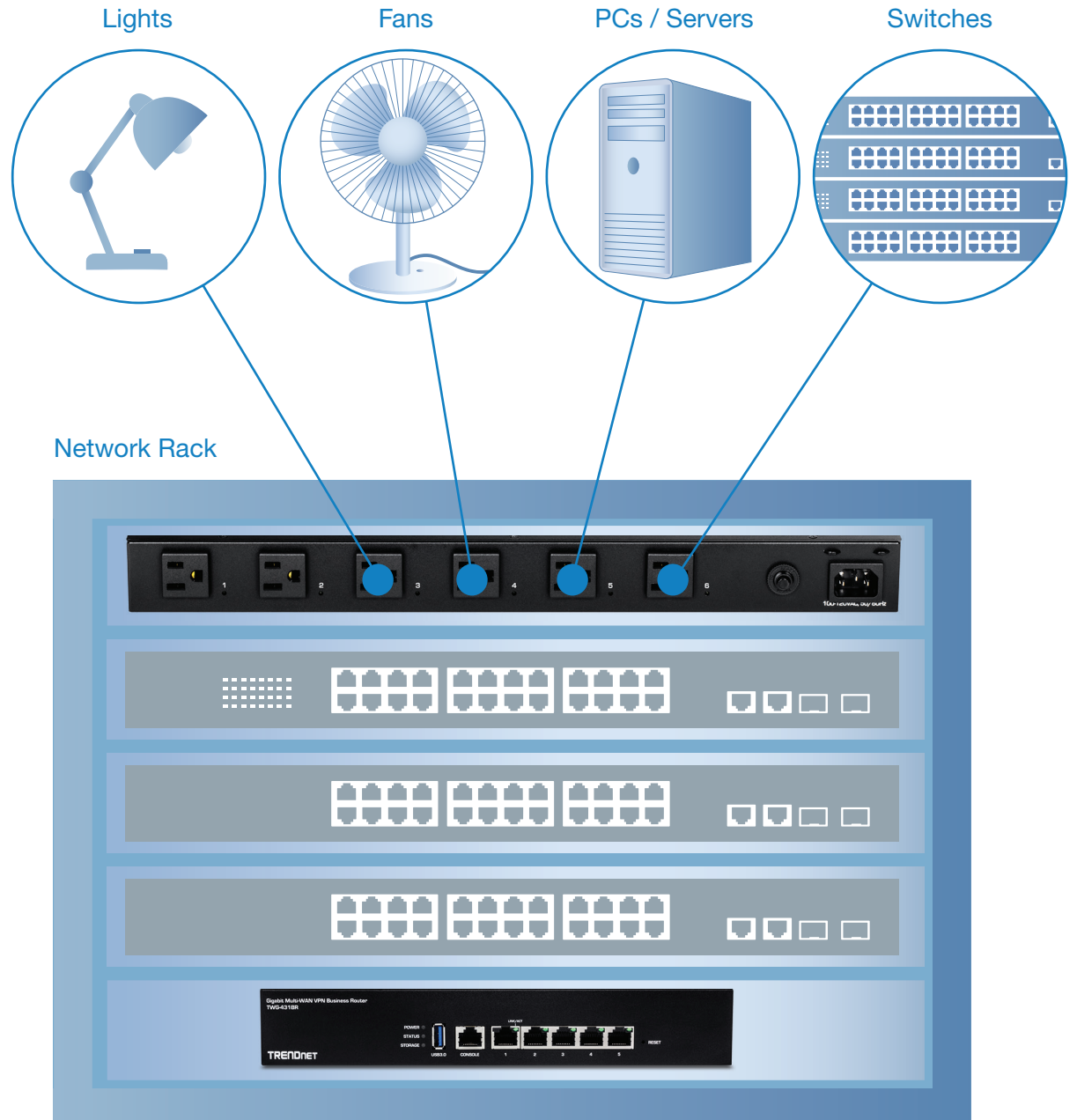
IP Power Distribution



IP Power

TPI-06

Description	Smart Power Strip
Outlets	6 management outlets, 1 outlet (Always On/not manageable)
Outlet type	NEMA 5-15R
Features	Rear facing ports, detachable power cord
Metered outlets	✓
Surge protection	✓
Protection modes	L-N, L-G, N-G
Peak impulse current	45,000A
Line voltage	100 ~ 120V, 50 - 60 Hz
Fuse type	Thermal Fuse
Mounting	Rack
TAA/NDAA compliant	✓
Warranty	3 year

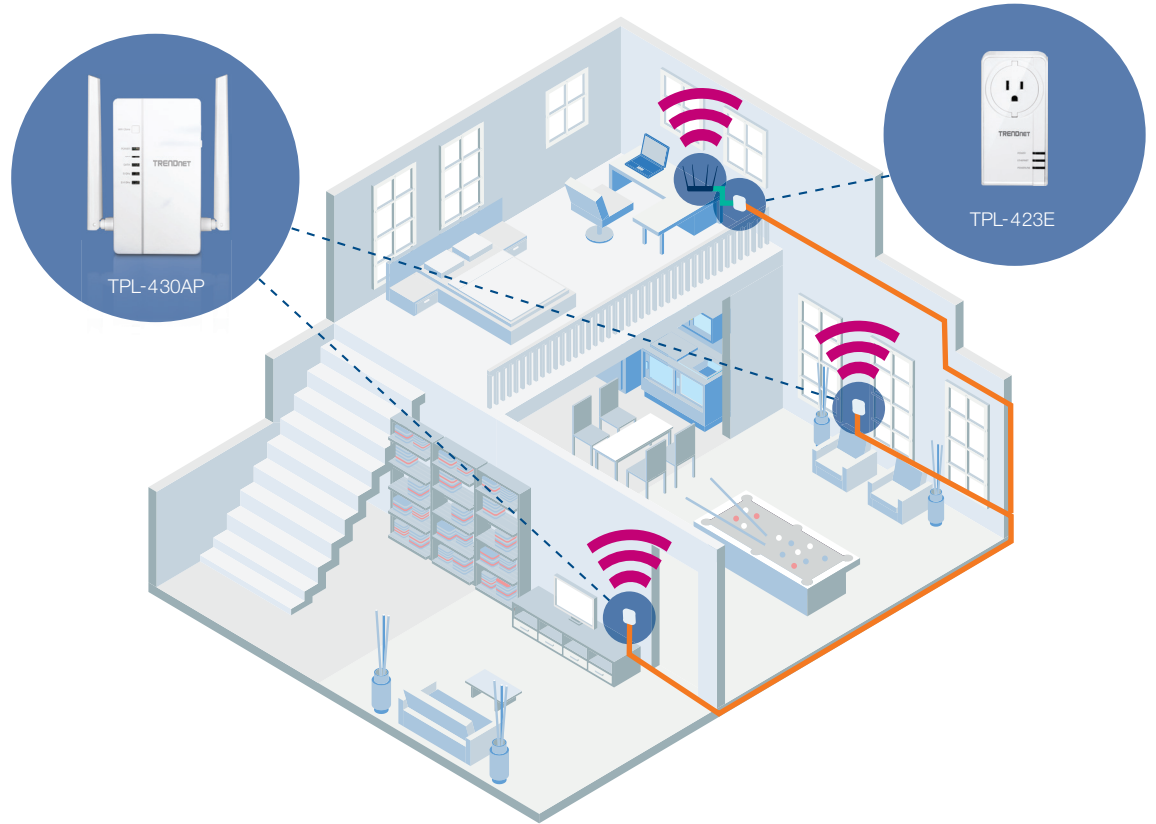


Powerline: Networking Over Electrical Lines



WiFi Everywhere™ Powerline 1200

	TPL-430APK	TPL-430AP
Max. speed	1200Mbps	1200Mbps
Specification	AV2	AV2
Port(s)	TPL-430APK: 3 x Gigabit TPL-423E: 1 x Gigabit	3 x Gigabit
Powerline coverage	300m / 984 ft. linear distance over electrical lines	
Power savings	✓	✓
Features	Plug in both adapters to extend a wireless AC network	Extend your network w/ built-in AC1200 wireless
NDA compliant	✓	✓
Warranty	3 year	3 year

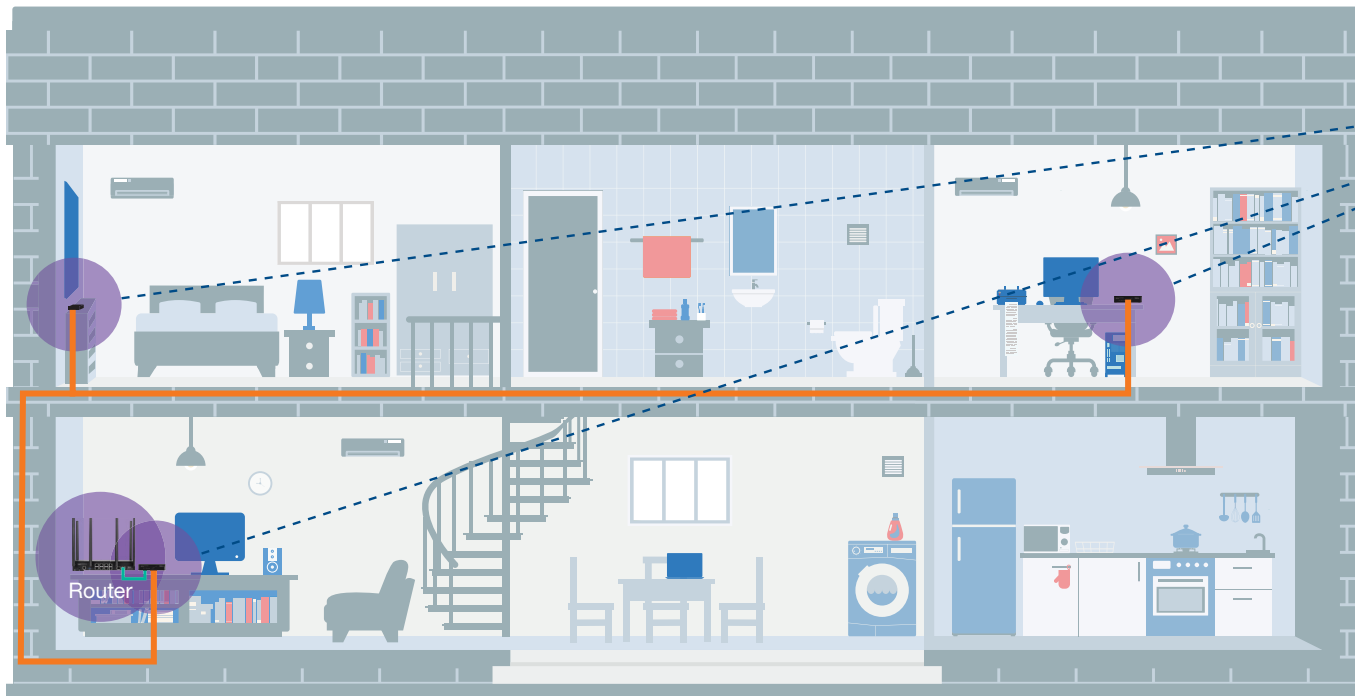


Powerline 1300

Powerline 500

	TPL-423E2K / TPL-423E	TPL-422E2K / TPL-422E	TPL-407E2K	TPL-406E2K
Max. speed	1300Mbps	1300Mbps	500Mbps	500Mbps
Specification	AV2	AV2	AV	AV
Port(s)	1 x Gigabit	1 x Gigabit	1 x 10/100Mbps	1 x 10/100Mbps
Powerline coverage	300m / 984 ft. linear distance over electrical lines			
Power savings	✓	✓	✓	✓
Features	High-performance adapters w/ built-in electrical outlet	High-performance adapters, compact design	Convenient built-in electrical outlet	Performance & value
NDA compliant	✓	✓	✓	✓
Warranty	3 year	3 year	3 year	3 year

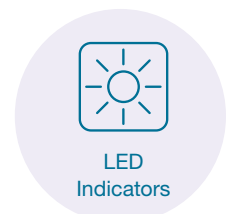
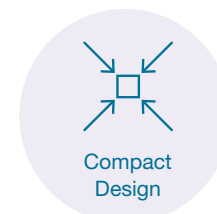
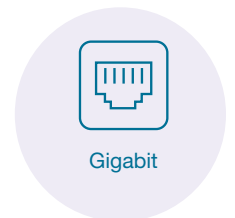
MoCA: Ethernet over Coax



TRENDnet's MoCA® Ethernet over Coax Adapters use your existing coaxial cables to extend a high-speed building-wide network throughout your home or office. These compact MoCA adapters are designed to support MoCA deployment for digital TV, high speed-internet, and VoIP single-access subscription service offerings.



	MoCA 2.5 Adapters		Moca 2.0 Adapters	
	TMO-312C2K	TMO-312C	TMO-311C2K	TMO-311C
Max. speed	2.5Gbps	2.5Gbps	1Gbps	1Gbps
Specification	MoCA 2.5 bonded	MoCA 2.5 bonded	MoCA 2.0 bonded	MoCA 2.0 bonded
Port(s)	1 x MoCA Coax, 1 x RJ-45 Gigabit LAN port (each)		1 x MoCA Coax, 1 x TV Coax, 1 x RJ-45 Gigabit LAN port (each)	
Moca coverage	300m / 984 ft. linear distance over coaxial cables			
Power savings	MoCA energy savings			
Features	Connect Ethernet devices to an existing MoCA network. Passthrough IPv4/IPv6 from MoCA and Ethernet ports.			
TAA/NDAA compliant	✓	✓	✓	✓
Warranty	3 year	3 year	3 year	3 year



Routers & Adapters

See more wireless solutions in the Industrial; SMB Wireless; and Powerline sections.



	Mesh WiFi		WiFi Routers	WiFi Access Point
	TEW-832MDR2K	TEW-832MDR	TEW-831DR	TEW-638APB
Wireless rating	AC1200	AC1200	AC1200	N300
Max. data rate / Wi-Fi band	867Mbps / AC + 300Mbps / N	867Mbps / AC + 300Mbps / N	867Mbps / AC + 300Mbps / N	300Mbps / 2.4GHz
Ports	2 x Gigabit (each node)	2 x Gigabit	3 x 10/100Mbps	1 x 10/100Mbps
Features	Mesh kit, MU-MIMO, seamless WiFi	Mesh node, MU-MIMO, seamless WiFi	MU-MIMO	Detachable antennas
USB port	-	-	-	-
Guest network	✓	✓	-	-
Pre-encrypted	✓	✓	✓	-
Bark*	✓	✓	-	-
TAA compliant	✓	✓	-	✓
NDA compliant	✓	✓	✓	✓
Warranty	3 year	3 year	3 year	3 year



	WiFi Adapters				WiFi / Bluetooth®	Bluetooth® Adapter
	TEW-905UB	TEW-809UB	TEW-805UBH	TEW-808UBM	TEW-907ECH	TBW-110UB
Device	USB Adapter	USB Adapter	USB Adapter	USB Adapter	PCIe Adapter	USB Adapter
Wireless rating	AX1800	AC1900	AC1200	AC1200	AX3000 + Bluetooth 5.2	Bluetooth 5.0
Max. data rate / WiFi band	1201Mbps / AX + 573Mbps / N	1.3Gbps / AC + 600Mbps / N	867Mbps / AC + 300Mbps / N	867Mbps / AC + 300Mbps / N	2401Mbps / AX + 600Mbps / N	-
Device interface	USB 3.0 Gen 1	USB 3.0	USB 3.1 Gen 1	USB 2.0	-	USB 2.0
Features	MU-MIMO, compact	High-gain detachable antennas & power amplifiers extend coverage	Adjustable high-gain external antenna, WPS button, LED indicator	MU-MIMO, compact	Simultaneous WiFi & Bluetooth®	Compact
OS compatibility	Windows®	Windows® & Mac®	Windows® & Mac®	Windows® & Mac®	Windows®	Windows®
TAA compliant	✓	✓	✓	✓	✓	-
NDA compliant	✓	✓	✓	✓	✓	✓
Warranty	3 year	3 year	3 year	3 year	3 year	3 year

Not available in Europe / UK.

Not available in Canada.

*Service fees apply.

Rackmount KVM & KVM Accessories



Rackmount KVM

	TK-1603R	TK-803R
Computer connections	16	8
Display input	VGA	VGA
Max. resolution	2048 x 1536	2048 x 1536
Keyboard / mouse	USB, PS/2	USB, PS/2
Features	Compact 1U rack height	Adjustable auto-scan and audible feedback
TAA /NDAA compliant	✓	✓
Warranty	2 year	2 year



VGA Monitor



HD Video Resolution



USB & PS/2



Rackmount Design

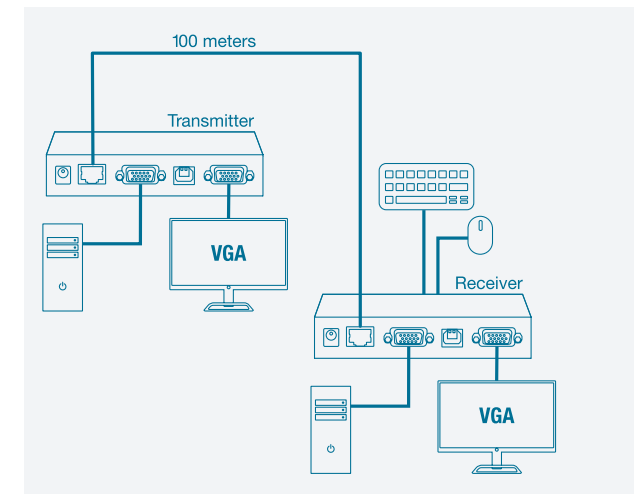


KVM Extender

Video Splitter

	TK-EX4	TK-V401S
Description	KVM Extension Kit	4-Port Stackable Video Splitter
Features	Extends up to 100m (328 ft.)	Clones or repeats a viewing field to up to four monitors (Doesn't extend a viewing field over multiple monitors)
NDAA compliant	✓	✓
Warranty	2 year	2 year

KVM Extension Diagram



Desktop KVM



	DisplayPort					HDMI	USB Share Switch
	TK-440DP	TK-240DP	TK-441DP	TK-241DP	TK-220DPi	TK-215i	TK-U404
Computer connections	4	2	4	2	2	2	-
Monitor port	2 x DisplayPort 1.2	2 x DisplayPort 1.2	1 x DisplayPort 1.2	1 x DisplayPort 1.2	1 x DisplayPort 1.2	HDMI	-
Max. resolution	3840 x 2160	3840 x 2160	3840 x 2160	3840 x 2160	3840 x 2160	1920 x 1080	-
Keyboard / mouse	USB	USB	USB	USB	USB	USB	USB
Audio support	✓	✓	✓	✓	✓	✓	✓
Features	Dual monitor	Bonus 2-port USB hub, dual monitor	Bonus 2-port USB hub	Bonus 2-port USB hub	PC toggle switch	Ergonomic toggle switch	4 x USB device ports, Ergonomic toggle switch
Cables	2 x TK-DP06/2, 4 x TK-CP06*	1x TK-DP06/2, 2 x TK-CP06*	4 x TK-CP06*	2 x TK-CP06*	Integrated	Integrated	Included
TAA compliant	✓	✓	✓	✓	✓	-	-
NDA compliant	✓	✓	✓	✓	✓	✓	✓
Warranty	2 year	2 year	2 year	2 year	2 year	2 year	2 year



	VGA			
	TK-409K	TK-407K	TK-209K	TK-207K
Computer connections	4	4	2	2
Monitor port	VGA	VGA	VGA	VGA
Max. resolution	2048 x 1536 @ 60Hz	2048 x 1536 @ 60Hz	2048 x 1536 @ 60Hz	2048 x 1536 @ 60Hz
Keyboard / mouse	USB	USB	USB	USB
Audio support	✓	-	✓	-
Features	Hot key commands	Hot key commands	Top seller	Hot key commands
Cables	Included	Included	Included	Included
NDA compliant	✓	✓	✓	✓
Warranty	2 year	2 year	2 year	2 year

*Sold separately.

USB-C & USB



	USB-C Adapters			USB-C Hubs	
	TUC-ET5G	TUC-ET2G	TUC-ETG	TUC-ETGH3	TUC-H4E
Description	USB-C 3.1 to 5GBASE-T Ethernet Adapter	USB-C 3.1 to 2.5GBASE-T Ethernet Adapter	USB-C to Gigabit Ethernet Adapter	USB-C to Gigabit Adapter + USB Hub	4-Port USB-C Ultra-Mini Hub
Features	Windows® & Mac® compatible*	Includes USB-A Adapter, Windows® & Mac® compatible*	Windows® & Mac® compatible*	Windows® & Mac® compatible*	Windows® & Mac® compatible*
TAA compliant	✓	✓	-	-	-
NDA compliant	✓	✓	✓	✓	✓
Warranty	2 year	2 year	2 year	2 year	2 year



	USB 3.0				USB 2.0		RS-232 Serial Converters		
	TU3-ETG	TU3-ETGH3	TU3-H4E	TU3-H4	TU2-ET100	TU2-700	TU-S4	TU-S9	TU-S9E
Description	USB 3.0 to Gigabit Adapter	USB 3.0 to Gigabit Adapter + USB Hub	4-Port USB 3.0 Hub	4-Port USB 3.0 Hub	USB to Ethernet Adapter	7-Port USB Hub	USB to Serial Hub	USB to Serial Converter	Ethernet to Serial Converter
Features	Windows® & Mac® compatible*	Windows® & Mac® compatible*	No CD installation required	No CD installation required	Windows® & Mac® compatible*	Adds 7 USB 2.0 ports, no CD installation required	Converts to 4 x RS-232 serial ports	Converts to RS-232 serial port, Windows® & Mac® compatible*	Converts a serial device to a network device
NDA compliant	✓	✓	✓	✓	✓	✓	✓	✓	✓
Warranty	2 year	2 year	2 year	2 year	2 year	2 year	2 year	2 year	2 year

Contact TRENDnet

Headquarters Address

20675 Manhattan Place
Torrance, CA 90501
USA

www.TRENDnet.com

Main Phone Number

310-961-5500

info@trendnet.com



Toll Free Number

888-326-6061

Department

North America Sales
(US, Canada, UK)

Extension 1

sales@trendnet.com

International Sales

Extension 2

intlsales@trendnet.com (EMEA, APAC)
latam@trendnet.com (LATAM)

Marketing

marketing@trendnet.com

Customer Service

Extension 3

Online Feedback System
www.trendnet.com/company/feedback/

Pre-Sales

Extension 4

Technical Support

866-845-3673

Online Help Desk Ticket System
www.trendnet.com/support/helpdesk

All references to speed are for comparison purposes only. Product specifications, size, and shape are subject to change without notice, and actual product appearance may differ from that depicted herein. Some information may have changed since the printing of this catalog. For the latest product information and to view our complete product line, please visit our website. © Copyright 2023 TRENDnet, Inc. All Rights Reserved.

