

TRENDNET®



— PRODUCT CATALOG —



SWITCHES

PoE

INDUSTRIAL

WIRELESS

SURVEILLANCE

POWERLINE

30 ANNIVERSARY

The image features a large, dark blue '30' where the '0' is a globe showing the Americas. The word 'ANNIVERSARY' is arched above the globe. The background is a light blue gradient with a pattern of small, semi-transparent squares and circles.

Index

About TRENDnet	3
Switches	5
Managed & Unmanaged Switches	
Multi-Gigabit: 2.5G/5G/10G	9
Web Smart & EdgeSmart Switches	
Network Adapters	
SFP+ Modules	
PoE	11
Managed & Unmanaged Switches	
Long Range PoE Switches	
Injectors / Splitters / Extenders	
Access Points	See SMB Wireless
IP Cameras & NVRs	See Surveillance
Industrial	17
Managed & Unmanaged Switches	
Fiber Media Converters & SFP Modules	
SMB Wireless	22
Business Routers	
Wireless Controllers	
Indoor & Outdoor Access Points	
Surveillance	25
IP Cameras / Network Cameras	
Network Video Recorders	
Fiber	30
Powerline	32
Routers and Adapters	35
KVM	36
USB	38
Contact TRENDnet	41



TRENDnet's vision is to build innovative, easy-to-use, and reliable Networks People Trust™. TRENDnet solutions network countless devices to enable your connected lifestyle and workplace. Building award-winning networking solutions since 1990, TRENDnet connects you with what you value most. Founded in Torrance, California, TRENDnet has grown to become a leading global networking hardware brand.





Price-to-Performance Leader
Multi-Award-Winning Product Line
Demonstrated Reliability
Exceptional Product Quality
Comprehensive Customer Support
Pre-Sales Engineering Support
Premium Technical Support Services

Français:

La vision de TRENDnet est de construire des réseaux novateurs, simples à utiliser et fiables sur lesquels les gens peuvent compter. Les solutions de TRENDnet mettent en réseaux d'innombrables périphériques qui simplifient votre style de vie et votre travail en ligne. En créant depuis 1990 des solutions de mise en réseau primées, TRENDnet vous connecte avec ce que vous avez de plus précieux. Fondé à Torrance, Californie, TRENDnet a grandi pour devenir une marque internationale de matériel, leader de la mise en réseau. TRENDnet est leader en matière de rapport qualité/prix, avec une ligne de produits primés, une fiabilité démontrée, une qualité de produits exceptionnelle, un service clientèle complet, une assistance en soutien en ingénierie d'avant-vente et des services d'assistance technique de premier plan.

Deutsch:

TRENDnet hat es sich zum Ziel gesetzt, innovative, einfach zu verwendende und zuverlässige Netzwerke zu erstellen, denen die Kunden vertrauen (Networks People Trust™). Die Lösungen von TRENDnet vernetzen unzählige Geräte, um Ihnen ein verbundenes Leben und Arbeiten zu ermöglichen. TRENDnet schafft seit 1990 preisgekrönte Netzwerklösungen und verbindet Sie mit dem, was Ihnen am wichtigsten ist. Seit der Gründung in Torrance, Kalifornien, ist TRENDnet zu einer weltweit führenden Netzwerkhardwaremarke geworden. TRENDnet verfügt über ein führendes Preis-Leistungsverhältnis mit einer mehrfach ausgezeichneten Produktreihe und erwiesener Zuverlässigkeit, herausragender Produktqualität, umfassendem Kundendienst, Engineering-Unterstützung vor dem Verkauf und erstklassigem technischen Support.

Português:

O objetivo da TRENDnet é sempre criar redes inovadoras, fáceis de usar e confiáveis. Soluções de rede da TRENDnet são compostas por inúmeros dispositivos para garantir o seu estilo de vida e trabalho conectados. Com soluções de rede premiadas desde 1990, com a TRENDnet você se conecta com o que você mais valoriza. Fundada em Torrance, Califórnia, a TRENDnet cresceu e se tornou uma marca líder de dispositivos de rede. A TRENDnet é líder na relação custo-desempenho, com uma multipremiada linha de produtos, confiabilidade, excepcional qualidade dos produtos, suporte ao cliente, suporte pré-vendas e serviços de suporte técnico premium.

Español:

La visión de TRENDnet es crear redes innovadoras, de fácil uso y de confianza (Networks People Trust™). Las soluciones de TRENDnet conectan en red los numerosos dispositivos que le permiten mantener su modo de vida y de trabajo conectados. TRENDnet, con sus premiadas soluciones de red desde 1990, le conecta con lo que usted más valora. Fundada en Torrance, California, TRENDnet ha crecido hasta convertirse en una marca líder en el mundo en hardware de redes. TRENDnet es líder en la relación precio/rendimiento, con una línea de productos galardonada con múltiples premios, solidez contrastada, calidad excepcional en sus productos, soporte integral al cliente, soporte de ingeniería previo a la venta y servicios de soporte técnico de primera categoría.

Unmanaged

Unmanaged

To help boost network efficiency and eliminate network congestion, unmanaged switches are designed to simply increase port density. Installation is plug and play with no special requirements or configuration needed.



Français:

Les switches non gérés sont conçus pour augmenter simplement la densité des ports. Les switches EdgeSmart de TRENDnet offrent une gestion de l'interface graphique Web avec les fonctionnalités les plus courantes des switches gérés. Les switches Web Smart prennent en charge des fonctions plus avancées et les switches de couche 2 de TRENDnet incluent des fonctions de gestion de premier ordre pour une meilleure surveillance et une intégration réseau flexible.

EdgeSmart

TRENDnet's EdgeSmart switches feature web GUI management with just the most commonly used managed switch features such as VLAN, IGMP snooping, QoS, and port trunking. This helps to reduce unnecessary switch complexity.



Deutsch:

Unverwaltete Switches wurden entwickelt, um die Portdichte einfach zu erhöhen. Die EdgeSmart-Switches von TRENDnet ermöglichen Web-GUI-Verwaltung mit den gängigsten Funktionen verwalteter Switches. Web-Smart-Switches unterstützen erweiterte Funktionen, und die Layer-2-Switches von TRENDnet bieten erstklassige verwaltete Funktionen für bessere Überwachung und flexible Netzwerkintegration.

Advanced Management

Web Smart

For more sophisticated networks, Web Smart switches support advanced management features such as traffic management controls, IP routing, VLAN, QoS, access controls, link aggregation, troubleshooting, SNMP monitoring, per port MAC restriction, and dynamic ARP inspection.



Português:

Switches não gerenciados são projetados para simplesmente aumentar a densidade de portas. Os switches EdgeSmart da TRENDnet apresentam gerenciamento web GUI com os recursos mais comuns dos switches gerenciados. Os switches Web Smart suportam recursos mais avançados, e os switches Layer 2 da TRENDnet incluem gerenciamento dos principais recursos para um melhor monitoramento e integração da rede.

Layer 2 Managed

TRENDnet's Layer 2 switch solutions include premier managed features such as CLI, PoE control, access control lists, VLAN, IGMP snooping, QoS, RMON, SNMP trap, and syslog for monitoring and flexible network integration.



Español:

Los switches no administrados están diseñados para aumentar la densidad de puertos con facilidad. Los switches EdgeSmart de TRENDnet ofrecen administración GUI web con las funciones de switches administrados más frecuentes. Los switches Web Smart admiten funciones más avanzadas, y los switches de Capa 2 de TRENDnet ofrecen funciones administradas superiores para lograr una mejor monitorización y una integración de red flexible.

Managed Switches



	L2 Fiber	L2 Managed	Web Smart				10/100 Web Smart	EdgeSmart		
	TL2-FG142	TL2-G244	TEG-524WS	TEG-284WS	TEG-204WS	TEG-082WS	TEG-2248WS	TEG-S80ES	TEG-S50ES	
Ports	14 x SFP, 2 x shared RJ-45 Gigabit, 1 x RJ-45 Fast Ethernet management, 1 x RJ-45 console	20 x Gigabit, 4 x shared Gigabit (RJ-45/SFP), 1 x RJ-45 console	48 x Gigabit, 4 x shared Gigabit (RJ-45/SFP)	24 x Gigabit, 4 x shared Gigabit (RJ-45/SFP)	16 x Gigabit, 4 x shared Gigabit (RJ-45/SFP)	8 x Gigabit, 2 x SFP	48 x 10/100Mbps, 2 x Gigabit, 2 x shared Gigabit (RJ-45/SFP)	8 x Gigabit	5 x Gigabit	
Switching capacity	28Gbps	48Gbps	104Gbps	56Gbps	40Gbps	20Gbps	17.6Gbps	16Gbps	10Gbps	
RAM buffer	128MB	1MB	1.5MB	512KB	512KB	512KB	1.5MB	192KB	125KB	
Forwarding rate (64-byte packet size)	20.8Mpps	35.7Mpps	77.4Mpps	41.7Mpps	29.8Mpps	14.9Mpps	13.1Mpps	11.9Mpps	7.44Mpps	
MAC address table	8K	16K	16K	8K	8K	8K	16K	4K	2K	
VLAN	Asymmetric, port based, multiple management assignment, up to 256 VLAN groups, 802.1Q, dynamic GVRP, private, voice	Asymmetric, port-based, 802.1Q, private, voice, GVRP, mac-based, protocol-based	Asymmetric, port-based, 802.1Q, private, voice, GVRP					Asymmetric, port-based, 802.1Q, private, voice		
ACL	IPv4 L2-L4 & IPv6	IPv4 L2-L4 & IPv6	IPv4 L2-L4 & IPv6	IPv4 L2-L4 & IPv6	IPv4 L2-L4 & IPv6	IPv4 L2-L4 & IPv6	IPv4 L2-L4 & IPv6	-	-	
IPv6	✓	✓	✓	✓	✓	✓	✓	-	-	
Static IP routing	✓	-	✓	✓	✓	✓	-	-	-	
DoS prevention	✓	✓	✓	✓	✓	✓	✓	-	-	
802.1ab LLDP	✓	✓	✓	✓	✓	✓	✓	-	-	
802.1X	✓	✓	✓	✓	✓	✓	✓	-	-	
Dynamic GVRP	✓	✓	✓	✓	✓	✓	✓	-	-	
Port trunking	LACP	LACP	LACP	LACP	LACP	LACP	LACP	Static	Static	
RMON	✓	✓	✓	✓	✓	✓	✓	-	-	
CoS (802.1p)	✓	✓	✓	✓	✓	✓	✓	✓	✓	
Spanning tree	STP, RSTP, MSTP	STP, RSTP, MSTP	STP, RSTP, MSTP	STP, RSTP, MSTP	STP, RSTP, MSTP	STP, RSTP, MSTP	STP, RSTP, MSTP	STP, RSTP	STP, RSTP	
Multicast (IGMP)	v1, v2, v3	v1, v2, v3	v1, v2, v3	v1, v2, v3	v1, v2, v3	v1, v2, v3	v1, v2, v3	v1, v2, v3	v1, v2, v3	
SNMP	v1, v2c, v3	v1, v2c, v3	v1, v2c, v3	v1, v2c, v3	v1, v2c, v3	v1, v2c, v3	v1, v2c, v3	v1, v2c	v1, v2c	
Jumbo frames	9.6KB	10KB	10KB	10KB	10KB	10KB	10KB	9KB	9KB	
Fan	Fanless	Fanless	Fanless	Fanless	Fanless	Fanless	Fanless	Fanless	Fanless	
Mounting	Rack	Rack	Rack	Rack	Rack	Rack	Rack	Wall	Wall	
Warranty	Lifetime*	Lifetime*	Lifetime*	Lifetime*	Lifetime*	Lifetime*	Lifetime*	Lifetime*	Lifetime*	

Unmanaged Switches



Gigabit Unmanaged Metal

	TEG-S24g	TEG-S24Dg	TEG-S16g	TEG-S16Dg	TEG-S82g	TEG-S80g	TEG-S50g	TEG-S51SFP
Ports	24 x Gigabit	24 x Gigabit	16 x Gigabit	16 x Gigabit	8 x Gigabit	8 x Gigabit	5 x Gigabit	4 x Gigabit, 1 x SFP
Switching capacity	48Gbps	48Gbps	32Gbps	32Gbps	16Gbps	16Gbps	10Gbps	10Gbps
RAM buffer	512KB	512KB	512KB	512KB	192KB	192KB	128KB	128KB
MAC address table	8K	8K	8K	8K	4K	4K	2K	2K
Jumbo frames	10KB	10KB	10KB	10KB	9KB	9KB	9KB	9KB
GREENnet	✓	✓	✓	✓	✓	✓	✓	-
Internal power	✓	✓	✓	✓	-	-	-	-
Mounting	Rack	ETH-11MK**	Rack	ETH-11MK**	Wall	Wall	-	Magnet
Warranty	Lifetime*	Lifetime*	Lifetime*	Lifetime*	Lifetime*	Lifetime*	Lifetime*	Lifetime*



Gigabit Unmanaged Plastic

10/100 Unmanaged Plastic

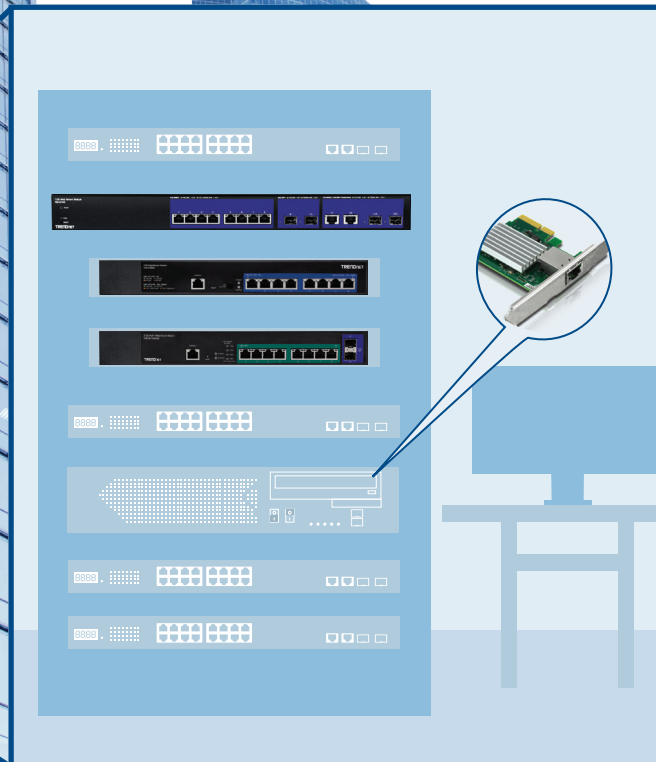
	TEG-S24D	TEG-S16D	TEG-S81g	TEG-S5g	TE100-S8	TE100-S5
Ports	24 x Gigabit	16 x Gigabit	8 x Gigabit	5 x Gigabit	8 x 10/100Mbps	5 x 10/100Mbps
Switching capacity	48Gbps	32Gbps	16Gbps	10Gbps	1.6Gbps	1Gbps
RAM buffer	512KB	x256KB	192KB	128KB	56KB	56KB
MAC address table	8K	8K	4K	2K	1K	1K
Jumbo frames	9KB	9KB	9KB	9KB	-	-
GREENnet	✓	✓	✓	✓	✓	✓
Internal power	-	-	-	-	-	-
Mounting	-	-	-	-	-	-
Warranty	3 year	3 year	3 year	3 year	3 year	3 year

*See warranty policy at TRENDnet.com

**Sold Separately

2.5G/5G/10G: Expand Your Network

TRENDnet's high-performance 10G, 5G, and 2.5G network solutions are built to support high-bandwidth network applications, helping to reduce bottlenecking and improve network efficiency. Well-suited for edge layer switching, our Multi-Gigabit switches, and 10G SFP+ solutions are used in a wide-array of SMB applications, including large scale surveillance networks and camera installations.



Français:

Les solutions réseau haute performance 10G et 2,5G de TRENDnet sont conçues pour prendre en charge les applications réseau à large bande passante, ce qui contribue à réduire les goulots d'étranglement et à améliorer l'efficacité du réseau. Bien adaptés à la commutation des couches marginales, nos switches Multi-Gigabit et nos solutions SFP+ 10G sont utilisés dans un large éventail d'applications pour les PME, notamment les réseaux de surveillance à grande échelle et les installations de caméras.

Deutsch:

Die leistungsstarken 10G- und 2,5G-Netzwerkösungen von TRENDnet unterstützen Netzwerkanwendungen mit hoher Bandbreite und helfen, Engpässe zu reduzieren und die Netzwerkeffizienz zu verbessern. Unsere Multi-Gigabit-Switches und 10G SFP+-Lösungen eignen sich hervorragend für den Einsatz in einer Vielzahl von SMB-Anwendungen, einschließlich großer Überwachungsnetzwerke und Kamerainstallationen.

Português:

As soluções de rede 10G e 2.5G de alto desempenho da TRENDnet foram desenvolvidas para suportar aplicações de rede que demandem uma grande largura de banda, ajudando a reduzir o gargalo e melhorar a eficiência da rede. Adequado para comutação na camada de borda, nossos switches Multi-Gigabit e soluções 10G SFP+ são usados em uma ampla gama de aplicações SMB, incluindo redes de vigilância em grande escala e instalações de câmeras.

Español:

Las soluciones de red de alto rendimiento 10G y 2.5G de TRENDnet están concebidas para admitir aplicaciones de red de alto ancho de banda, lo cual contribuye a reducir los cuellos de botella y aumenta la eficiencia de la red. Nuestros switches Multi-Gigabit y soluciones 10G SFP+ son ideales para conmutación en capa de extremo y se utilizan en un amplio abanico de aplicaciones para PyMES, entre ellas las redes de vigilancia a gran escala y las instalaciones de cámaras.

Multi-Gigabit Networking



	10G Web Smart Switches		2.5G Web Smart Switch	10G Unmanaged
	TEG-30284	TPE-30284	TPE-30102WS	TEG-30262
Ports	24 x Gigabit, 4 x 10G SFP+	24 x Gigabit PoE+, 4 x 10G SFP+	8 x 2.5GBASE-T PoE+, 2 x 10G SFP+, 1 x console (240W PoE budget)	24 x Gigabit, 2 x 10G SFP+
Switching capacity	128Gbps	128Gbps	80Gbps	88Gbps
RAM buffer	1.5MB	1.5MB	2MB	1.5MB
Forwarding rate (64-byte packet size)	95.2Mpps	95.2Mpps	59.5Mpps	65.5Mpps
MAC address table	16K	16K	32K	16K
VLAN	Asymmetric, port-based, 802.1Q, private, voice, GVRP		Asymmetric, port-based, 802.1Q, private, voice	-
ACL	IPv4 L2-L4 & IPv6	IPv4 L2-L4 & IPv6	IPv4 L2-L4 & IPv6	-
IPv6	✓	✓	✓	-
Static IP routing	-	-	✓	-
DoS prevention	✓	✓	✓	-
802.1ab LLDP	✓	✓	✓	-
802.1X	✓	✓	✓	-
Dynamic GVRP	✓	✓	-	-
LACP (802.3ad)	✓	✓	✓	-
RMON	✓	✓	✓	-
CoS (802.1p)	✓	✓	✓	-
Spanning tree	STP, RSTP, MSTP	STP, RSTP, MSTP	STP, RSTP, MSTP	-
Multicast (IGMP)	v1, v2, v3	v1, v2, v3	v1, v2, v3	-
SNMP	v1, v2c, v3	v1, v2c, v3	v1, v2c, v3	-
Jumbo frames	10KB	10KB	9KB	10KB
Fan	Smart fans	Smart fans	Smart fans	Fanless
Mounting	Rack	Rack	Rack	Rack
Warranty	Lifetime*	Lifetime*	Lifetime*	Lifetime*



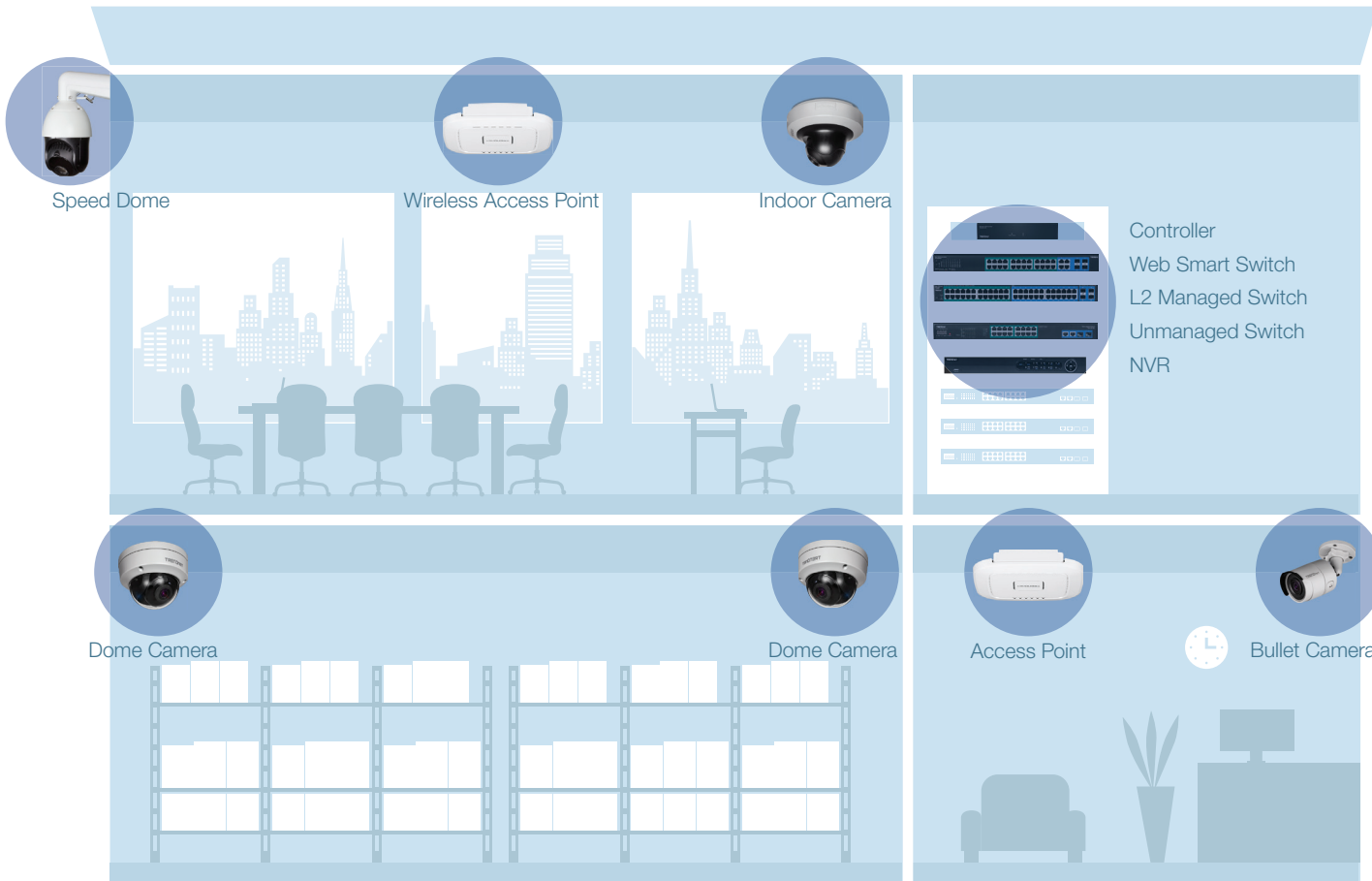
	10G / 2.5G Network Adapters		
	TEG-25GECTX	TEG-10GECTX	TEG-10GECSFP
Ports	1 x 2.5GBASE-T	1 x 10G BASE-T	1 x 10G SFP+
Speed	2.5/1Gbps, 100Mbps	10/5/2.5/1Gbps, 100Mbps	10Gbps
Features	Includes standard and low-profile brackets		
Form connector	PCIe 2.0 x 1	PCIe 2.0 x 4	PCIe 2.0 x 4
802.1Q VLAN	✓	✓	✓
Jumbo frames support	9KB	9KB	16KB
OS compatibility	Windows®, Windows® Server, Linux®, VMWare®, Hyper-V®, VirtualBox		
Warranty	3 year	3 year	3 year



	10G SFP+ Modules		
	TEG-10GBS10	TEG-10GBS40	TEG-10GBSR
Date rate	10 Gigabit	10 Gigabit	10 Gigabit
Fiber mode	Single	Single	Multi
Distance	10km (6.2 mi.)	40km (24.9 mi.)	550m (1804 ft.)
Digital Diagnostics Monitoring (DDM)	✓	✓	✓
Wavelength	1310nm	1550nm	850nm
Warranty	Lifetime*	Lifetime*	Lifetime*

*See warranty policy at TRENDnet.com

PoE: Flexibility and Savings



Save on setup costs and installation time by delivering power and data over a single Ethernet cable to PoE devices such as IP cameras and access points. In addition to reduced cost and time, PoE has several other benefits including flexibility for remote installations, network scalability, and managed controls. PoE delivers 15.4 watts of power per port; PoE+ delivers 30 watts; and UPoE/4PPoE delivers up to 95 watts of power per port.

See more PoE switches in the Multi-Gigabit and Industrial sections; see PoE access points in the SMB Wireless section; and see PoE cameras in the Surveillance section.

Français:

Economisez sur les coûts d'installation et sur le temps d'installation en fournissant l'alimentation et les données sur un seul câble Ethernet aux dispositifs PoE tels que les caméras IP et les points d'accès. Outre la réduction des coûts et du temps, le PoE offre plusieurs autres avantages, dont la souplesse pour les installations à distance, l'évolutivité du réseau et les contrôles gérés.

Deutsch:

Sparen Sie Einrichtungskosten und Installationszeit, indem Sie Strom und Daten über ein einziges Ethernet-Kabel an PoE-Geräte wie IP-Kameras und Access Points liefern. Zusätzlich zu Kosten- und Zeitersparnis bietet PoE eine Reihe weiterer Vorteile, darunter Flexibilität für Remote-Installationen, Netzwerk-Skalierbarkeit und verwaltete Steuerungen.

Português:

Economize nos custos e no tempo de instalação fornecendo energia e dados através de um único cabo Ethernet para dispositivos PoE, como câmeras IP e pontos de acesso. Além de reduzir custos e tempo, o PoE tem vários outros benefícios, incluindo flexibilidade para instalações remotas, escalabilidade de rede e controles gerenciados.

Español:

Ahorre gastos y tiempo de instalación suministrando alimentación y datos mediante un solo cable Ethernet a dispositivos PoE como cámaras IP y puntos de acceso. Además de ahorrar gastos y tiempo, la tecnología PoE ofrece otras ventajas, como flexibilidad para instalaciones remotas, escalabilidad de red y controles administrados.

PoE Managed Switches



L2 Managed PoE/PoE+

Gigabit Web Smart UPoE

	TL2-PG484	TL2-PG284	TPE-204US
Ports	24 x Gigabit PoE+, 20 x Gigabit, 4 x shared Gigabit (RJ-45/SFP), 1 x RJ-45 console	4 x Gigabit PoE+, 20 x Gigabit PoE, 4 x SFP, 1 x RJ-45 console	8 x Gigabit UPoE, 8 x Gigabit PoE+, 4 x shared Gigabit (RJ-45/SFP)
PoE budget	370W	185W	370W
Max. power per port	30W	30W	30W / 60W
Switching capacity	96Gbps	56Gbps	40Gbps
RAM buffer	1MB	1MB	512KB
Forwarding rate	71.4Mpps	41.7Mpps	29.8Mpps
MAC address table	16K	16K	8K
VLAN	Asymmetric, port-based, 802.1Q, private, voice, GVRP, mac-based, protocol-based		Asymmetric, port-based, 802.1Q, private, voice, GVRP
ACL	IPv4 L2-L4	IPv4 L2-L4	IPv4 L2-L4 & IPv6
IPv6	✓	✓	✓
Static IP routing	-	-	✓
DoS prevention	✓	✓	✓
802.1ab LLDP	✓	✓	✓
802.1X	✓	✓	✓
Spanning tree	STP, RSTP, MSTP	STP, RSTP, MSTP	STP, RSTP, MSTP
Multicast (IGMP)	v1, v2, v3	v1, v2, v3	v1, v2, v3
SNMP	v1, v2c, v3	v1, v2c, v3	v1, v2c, v3
Port based link aggregation	✓	✓	✓
Mounting	Rack	Rack	Rack
Fan	Smart fans	Smart fans	Smart fans
Warranty	Lifetime*	Lifetime*	Lifetime*

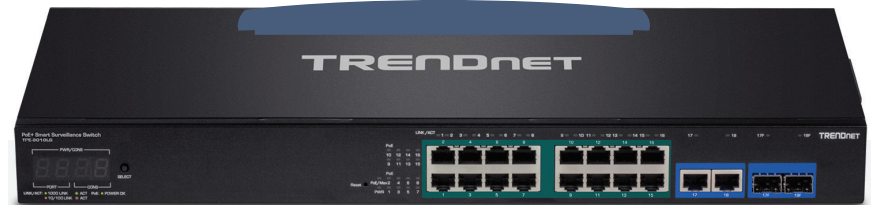
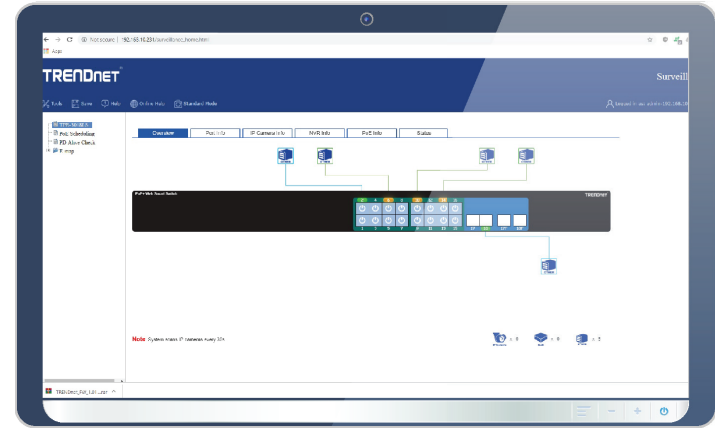
*See warranty policy at TRENDnet.com

Smart Surveillance Switches



Gigabit Web Smart PoE+

	TPE-3018LS	TPE-3012LS
Ports	16 x Gigabit PoE+, 2 x shared Gigabit (RJ-45/SFP)	8 x Gigabit PoE+, 2 x Gigabit, 2 x SFP
PoE budget	220W	110W
Max. power per port	30W	30W
Switching capacity	36Gbps	24Gbps
RAM buffer	512KB	512KB
Forwarding rate	26.7Mpps	17.8Mpps
MAC address table	8K	8K
VLAN	Asymmetric, port-based, 802.1Q, private, voice, GVRP	
ACL	IPv4 L2-L4 & IPv6	IPv4 L2-L4 & IPv6
IPv6	✓	✓
DoS prevention	✓	✓
802.1ab LLDP	✓	✓
802.1X	✓	✓
Spanning tree	STP, RSTP, MSTP	STP, RSTP, MSTP
Multicast (IGMP)	v1, v2, v3	v1, v2, v3
SNMP	v1, v2c, v3	v1, v2c, v3
Port based link aggregation	✓	✓
Mounting	Rack	Rack
Fan	Smart fans	Fanless
Warranty	Lifetime*	Lifetime*



ONVIF® compliant



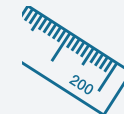
PoE self-healing:
PoE device auto-recovery & power scheduling



Manage cameras from switch interface



Real-time data for monitoring & troubleshooting



Extend PoE+ signal up to 656 ft./200m at 10Mbps



Front panel LED displays PoE power statistics

PoE Managed Switches



Gigabit Web Smart PoE+

	TPE-5048WS	TPE-5240WS	TPE-5028WS	TPE-2840WS	TPE-1620WSF	TPE-1620WS	TPE-082WS	TPE-1020WS	
Ports	48 x Gigabit PoE+, 4 x shared Gigabit (RJ-45/SFP)	48 x Gigabit PoE+, 4 x shared Gigabit (RJ-45/SFP)	24 x Gigabit PoE+, 4 x shared Gigabit (RJ-45/SFP)	24 x Gigabit PoE+, 4 x shared Gigabit (RJ-45/SFP)	20 x Gigabit PoE+, 4 x shared Gigabit (RJ-45/SFP)	16 x Gigabit PoE+, 4 x shared Gigabit (RJ-45/SFP)	8 x Gigabit PoE+, 2 x SFP	8 x Gigabit PoE+, 2 x shared Gigabit (RJ-45/SFP)	
PoE budget	740W	370W	370W	185W	370W	185W	75W	75W	
Max. power per port	30W	30W	30W	30W	30W	30W	30W	30W	
Switching capacity	104Gbps	104Gbps	56Gbps	56Gbps	40Gbps	40Gbps	20Gbps	20Gbps	
RAM buffer	1.5MB	1.5MB	512KB	512KB	512KB	512KB	512KB	1MB	
Forwarding rate	77.4Mpps	77.4Mpps	41.7Mpps	41.7Mpps	29.8Mpps	29.8Mpps	14.9Mpps	14.9Mpps	
MAC address table	16K	16K	8K	8K	8K	8K	8K	8K	
VLAN	Asymmetric, port-based, 802.1Q, private, voice, GVRP, multicast							Asymmetric, port-based, 802.1Q, private, voice, GVRP	
ACL	IPv4 L2-L4 & IPv6	IPv4 L2-L4 & IPv6	IPv4 L2-L4 & IPv6	IPv4 L2-L4 & IPv6	IPv4 L2-L4 & IPv6	IPv4 L2-L4 & IPv6	IPv4 L2-L4 & IPv6	IPv4 L2-L4 & IPv6	
IPv6	✓	✓	✓	✓	✓	✓	✓	✓	
Static IP routing	✓	✓	✓	✓	✓	✓	✓	-	
DoS prevention	✓	✓	✓	✓	✓	✓	✓	✓	
802.1ab LLDP	✓	✓	✓	✓	✓	✓	✓	✓	
802.1X	✓	✓	✓	✓	✓	✓	✓	✓	
Spanning tree	STP, RSTP, MSTP	STP, RSTP, MSTP	STP, RSTP, MSTP	STP, RSTP, MSTP	STP, RSTP, MSTP	STP, RSTP, MSTP	STP, RSTP, MSTP	STP, RSTP, MSTP	
Multicast (IGMP)	v1, v2, v3	v1, v2, v3	v1, v2, v3	v1, v2, v3	v1, v2, v3	v1, v2, v3	v1, v2, v3	v1, v2, v3	
SNMP	v1, v2c, v3	v1, v2c, v3	v1, v2c, v3	v1, v2c, v3	v1, v2c, v3	v1, v2c, v3	v1, v2c, v3	v1, v2c, v3	
Port based link aggregation	✓	✓	✓	✓	✓	✓	✓	✓	
Mounting	Rack	Rack	Rack	Rack	Rack	Rack	Rack	Rack	
Fan	Smart fans	Smart fans	Smart fans	Smart fans	Smart fans	Smart fans	Fanless	Fanless	
Warranty	Lifetime*	Lifetime*	Lifetime*	Lifetime*	Lifetime*	Lifetime*	Lifetime*	Lifetime*	

*See warranty policy at TRENDnet.com

PoE Managed Switches



	10/100 Web Smart PoE+	Gigabit EdgeSmart PoE+					EdgeSmart PoE Powered
	TPE-224WS	TPE-TG240ES	TPE-TG160ES	TPE-TG82ES	TPE-TG44ES	TPE-TG50ES	TPE-P521ES
Ports	4 x 10/100Mbps PoE+, 20 x 10/100Mbps PoE, 2 x Gigabit, 2 x shared Gigabit (RJ-45/SFP)	24 x Gigabit PoE+	16 x Gigabit PoE+	8 x Gigabit PoE+	4 x Gigabit PoE+, 4 x Gigabit	4 x Gigabit PoE+, 1 x Gigabit	1 x Gigabit PoE+ in, 2 x Gigabit PoE out, 2 x Gigabit
PoE budget	193W	370W	246W	64W	60W	31W	18W (PoE+ in), 8W (PoE in)
Max. power per port	30W	30W	30W	30W	30W	30W	18W
Switching capacity	12.8Gbps	48Gbps	32Gbps	16Gbps	16Gbps	10Gbps	10Gbps
RAM buffer	512KB	512KB	512KB	192KB	192KB	125KB	512KB
Forwarding rate	9.5Mpps	35.7Mpps	23.8Mpps	11.9Mpps	11.9Mpps	7.44Mpps	7.4Mpps
MAC address table	8K	8K	8K	4K	4K	2K	2K
VLAN	Asymmetric, port-based, 802.1Q, private, voice, GVRP	Asymmetric, port-based, 802.1Q, private, voice			Port-based, 802.1Q	Asymmetric, port-based, 802.1Q, private, voice	Asymmetric, port-based, 802.1Q, private, voice
ACL	IPv4 L2-L4 & IPv6	-	-	-	-	-	-
IPv6	✓	-	-	-	-	-	-
DoS prevention	✓	-	-	-	-	-	-
802.1ab LLDP	✓	-	-	-	-	-	-
802.1X	✓	-	-	-	-	-	-
Spanning tree	STP, RSTP, MSTP	STP, RSTP	STP, RSTP	STP, RSTP	-	STP, RSTP	STP, RSTP
Multicast (IGMP)	v1, v2, v3	v1, v2, v3	v1, v2, v3	v1, v2, v3	v1, v2, v3	v1, v2, v3	v1, v2, v3
SNMP	v1, v2c, v3	v1, v2c	v1, v2c	v1, v2c	-	v1, v2c	v1, v2c
Port based link aggregation	✓	✓	✓	✓	✓	✓	✓
Mounting	Rack	Rack	Rack	Wall	Wall	Wall	Wall
Fan	Smart fans	Fanless	Fanless	Fanless	Fanless	Fanless	Fanless
Warranty	Lifetime*	Lifetime*	Lifetime*	Lifetime*	Lifetime*	Lifetime*	Lifetime*



Injectors			Splitters	Extenders	
TPE-119GI	TPE-117GI	TPE-115GI	TPE-104GS	TPE-E100	TPE-E110
Gigabit 4PPoE 90W Injector	Gigabit Ultra PoE 60W Injector	Gigabit PoE+ 30W Injector	Gigabit PoE Splitter	Gigabit PoE+ Extender	Gigabit PoE+ Extender / Amplifier
Converts a network data signal into a PoE Ethernet connection			Splits a PoE signal into separate data and power sources	Extends a PoE network connection for up to 100m (328 ft.) without the use of a power adapter	

PoE Unmanaged Switches



	Gigabit 4PPoE / UPoE		Gigabit PoE+							
	TPE-BG182g	TPE-BG102g	TPE-TG240g	TPE-TG160g	TPE-TG80g	TPE-TG81g	TPE-TG82g	TPE-TG611	TPE-TG44g	TPE-TG50g
Ports	8 x Gigabit 4PPoE, 8 x Gigabit PoE+, 2 x SFP	4 x Gigabit 4PPoE, 4 x Gigabit PoE+, 2 x SFP	24 x Gigabit PoE+	16 x Gigabit PoE+	8 x Gigabit PoE+	8 x Gigabit PoE+	8 x Gigabit PoE+	4 x Gigabit PoE+, 1 x Gigabit, 1 x SFP	4 x Gigabit PoE+, 4 x Gigabit	4 x Gigabit PoE+, 1 x Gigabit
PoE budget	440W	240W	370W	246W	123W	110W	61W	65W	61.6W	31W
Max. power per port	95W	95W	30W	30W	30W	30W	30W	30W	30W	30W
Switching capacity	36Gbps	20Gbps	48Gbps	32Gbps	16Gbps	16Gbps	16Gbps	12Gbps	16Gbps	10Gbps
RAM buffer	512KB	512KB	512KB	512KB	128KB	192KB	128KB	128KB	128KB	128KB
MAC address table	8K	8K	8K	8K	9K	4K	8K	2K	8K	8K
Mounting	Rack	Rack	Rack	Rack	-	Rack	-	-	-	-
Power adapter	Internal	Internal	Internal	Internal	External	Internal	External	External	External	External
Warranty	Lifetime*	Lifetime*	Lifetime*	Lifetime*	Lifetime*	Lifetime*	Lifetime*	Lifetime*	Lifetime*	Lifetime*



	Long Range PoE+		High Power PoE+		10/100 PoE+		10/100 PoE
	TPE-LG80	TPE-LG50	TPE-TG182F	TPE-TG80F	TPE-T80H	TPE-S50	TPE-S44
Ports	8 x Gigabit PoE+	4 x Gigabit PoE+, 1 x Gigabit	16 x Gigabit PoE+, 2 x shared Gigabit (RJ-45/SFP)	8 x Gigabit PoE+	8 x 10/100Mbps PoE+	4 x 10/100Mbps PoE+, 2 x 10/100Mbps	4 x 10/100Mbps PoE, 4 x 10/100Mbps
PoE budget	65W	32W	440W	240W	110W	60W	30W
Max. power per port	30W	30W	30W	30W	30W	30W	15.4W
Switching capacity	16Gbps	10Gbps	36Gbps	16Gbps	1.6Gbps	1.2Gbps	1.6Gbps
RAM buffer	192KB	128KB	512KB	192KB	56KB	96KB	96KB
MAC address table	4K	2K	8K	4K	1K	2K	2K
Mounting	Wall	Wall	Rack	Rack	Rack	Wall	-
Power adapter	External	External	Internal	Internal	Internal	Internal	External
Warranty	Lifetime*	Lifetime*	Lifetime*	Lifetime*	Lifetime*	Lifetime*	Lifetime*

*See warranty policy at TRENDnet.com

Rugged Industrial Solutions



Sample NEMA box application

Industrial switches are often used with NEMA electrical enclosures.

NEMA boxes not available through TRENDnet

TRENDnet industrial switch and fiber solutions provide dependable and hardened networking hardware for your industrial environments. With an enclosure rating of IP30/IP40, TRENDnet's industrial networking hardware is designed to withstand a high degree of vibration and shock, and extreme heat or cold.

Français:

Les solutions de switches industriels et de fibres TRENDnet fournissent un matériel réseau fiable et renforcé à vos environnements industriels. Avec un indice de protection IP30/IP40, le matériel de mise réseau industriel de TRENDnet est conçu pour résister à un degré élevé de vibrations et de chocs, ainsi qu'à la chaleur ou au froid extrême.

Deutsch:

Industrielle Switch- und Glasfaserlösungen von TRENDnet bieten zuverlässige und robuste Netzwerkhardware für Ihre industrielle Umgebung. Mit einer Gehäuseschutzklasse von IP30/IP40 ist die industrielle Netzwerkhardware von TRENDnet so ausgelegt, dass sie einem hohen Grad an Vibration und Schock sowie extremer Hitze oder Kälte standhält.

Português:

As soluções de fibra e switches industriais da TRENDnet fornecem um hardware de rede robusto e confiável para seus ambientes industriais. Com uma classificação de gabinete IP30/IP40, o hardware de rede industrial da TRENDnet foi projetado para suportar um alto grau de vibração, choque e calor ou frio extremos.

Español:

Las soluciones de switches industriales y de fibra de TRENDnet ofrecen un hardware de red confiable y robusto para entornos industriales. Con su carcasa con calificación IP30/IP40, el hardware de red industrial de TRENDnet está concebido para resistir un alto grado de vibraciones y golpes, así como un calor y un frío extremos.

Industrial Managed Switches



	Industrial L2 Managed PoE+			Industrial L2 Managed		
	TI-PG1284i	TI-PG102i	TI-PG541i	TI-G160i	TI-G102i	TI-G642i
Ports	8 x Gigabit PoE+, 4 x Gigabit SFP, 1 x console	8 x Gigabit PoE+, 2 x Gigabit SFP	4 x Gigabit PoE+, 1 x Gigabit, 1 x SFP	16 x Gigabit	8 x Gigabit, 2 x SFP	4 x Gigabit, 2 x SFP
PoE budget	240W	240W @ 48V input / 124W @ 24V input	120W	-	-	-
Max. power per port	30W	30W	30W	-	-	-
Switching capacity	24Gbps	20Gbps	12Gbps	32Gbps	20Gbps	12Gbps
RAM buffer	128MB	128MB	128MB	128MB	128MB	128MB
Forwarding rate	17.86Mpps	14.8Mpps	8.93Mpps	23.8Mpps	14.88Mpps	18.9Mpps
MAC address table	16K	8K	8K	8K	8K	8K
VLAN	802.1Q, port-based, mac-based, Q-in-Q VLAN, port isolation	Port-based, 802.1Q, mac-based, port isolation	Port-based, 802.1Q, mac-based, port isolation	Port-based, 802.1Q, mac-based, port isolation	Port-based, 802.1Q, mac-based, port isolation	Port-based, 802.1Q, mac-based, port isolation
ACL	IPv4 L2-L4	IPv4 L2-L4	IPv4 L2-L4	IPv4 L2-L4	IPv4 L2-L4	IPv4 L2-L4
IPv6	IPv6 static IP address, DHCPv6 client	-	-	-	-	-
802.1ab LLDP	✓	✓	✓	✓	✓	✓
802.1X	✓	✓	✓	✓	✓	✓
Spanning tree	STP, RSTP, MSTP	STP, RSTP	STP, RSTP	STP, RSTP	STP, RSTP	STP, RSTP
ERPS	✓	✓	✓	✓	✓	✓
Multicast (IGMP)	v1, v2, v3	v1, v2, v3	v1, v2, v3	v1, v2, v3	v1, v2, v3	v1, v2, v3
SNMP	v1, v2c, 3	v1, v2c, v3	v1, v2c, v3	v1, v2c, v3	v1, v2c, v3	v1, v2c, v3
Port based link aggregation	✓	✓	✓	✓	✓	✓
Temperature	-40° – 75° C (-40° – 167° F)	-40° – 75° C (-40° – 167° F)	-40° – 75° C (-40° – 167° F)	-40° – 75° C (-40° – 167° F)	-40° – 75° C (-40° – 167° F)	-40° – 75° C (-40° – 167° F)
Housing	IP30	IP30	IP30	IP30	IP30	IP30
Mounting	DIN-Rail	DIN-Rail / Wall	DIN-Rail	DIN-Rail	DIN-Rail	DIN-Rail
Power supply	TI-S48048**	TI-S48048**	48VDC3000, TI-S24048**	TI-S12048**	TI-M6024**	TI-M6024**
Warranty	Lifetime*	Lifetime*	Lifetime*	Lifetime*	Lifetime*	Lifetime*

*See warranty policy at TRENDnet.com

**Power supply required

Industrial PoE Solutions



	UPoE	Industrial Gigabit PoE+ Switches					Industrial 10/100 PoE+	
	TI-UPG62	TI-PG160	TI-PG102	TI-PG80	TI-PG62	TI-PG541	TI-PE80	TI-PE50
Ports	4 x Gigabit UPoE, 2 x SFP	16 x Gigabit PoE+	8 x Gigabit PoE+, 2 x shared Gigabit (RJ-45/SFP)	8 x Gigabit PoE+	4 x Gigabit PoE+, 1 x SFP, 1 x shared Gigabit (RJ-45/SFP)	4 x Gigabit PoE+, 1 x Gigabit, 1 x SFP	8 x 10/100Mbps PoE+	4 x 10/100Mbps PoE+, 1 x 10/100Mbps
PoE budget	240W	240W	240W	200W	120W	120W	200W	90W
Max. power per port	60W	30W	30W	30W	30W	30W	30W	30W
Switching capacity	12Gbps	32Gbps	20Gbps	16Gbps	12Gbps	12Gbps	1.6Gbps	1Gbps
RAM buffer	1MB	512KB	2MB	1MB	1MB	512KB	1MB	56KB
MAC address table	1K	8K	16K	8K	1K	8K	1K	1K
Temperature	-40° – 75° C (-40° – 167° F)			-40° – 75° C (-40° – 167° F)		-40° – 75° C (-40° – 167° F)		
Housing	IP30	IP30	IP30	IP30	IP30	IP30	IP30	IP30
Mounting	DIN-Rail / Wall	DIN-Rail / Wall	DIN-Rail / Wall	DIN-Rail / Wall	DIN-Rail / Wall	DIN-Rail	DIN-Rail / Wall	DIN-Rail / Wall
Power supply	TI-S48048**	TI-S48048**	48VDC3000, TI-S24048**	TI-S24048**	48VDC3000, TI-S12048, TI-S24048**	TI-S24048**	TI-S24048**	TI-M6024, TI-S12048**
Warranty	Lifetime*	Lifetime*	Lifetime*	Lifetime*	Lifetime*	Lifetime*	Lifetime*	Lifetime*



	Industrial Gigabit PoE Injectors / Extender / Splitter				
	TI-IG90	TI-IG60	TI-IG30	TI-EU120	TI-SG104
Description	4PPoE Injector	UPoE Injector	PoE+ Injector	2-Port Outdoor UPoE Extender	UPoE Splitter
PoE budget	90W	60W	30W	64W	-
Temperature	-40° – 75° C (-40° – 167° F)	-40° – 75° C (-40° – 167° F)	-40° – 75° C (-40° – 167° F)	-40° – 75° C (-40° – 167° F)	-40° – 80° C (-40° – 185° F)
Housing	IP30	IP30	IP30	IP67	IP30
Mounting	DIN-Rail / Wall	DIN-Rail / Wall	DIN-Rail / Wall	Wall	DIN-Rail / Wall
Power supply	TI-S12048**	TI-S12048**	TI-S12048**	PD power input: 30W, 60W, 95W	DC output: 12V, 16V, 24V, 48V
Warranty	3 year	3 year	3 year	3 year	3 year

Industrial Switches



	Variable Voltage	EN50155 M12 Switch	Front Access Switches		
	TI-PG62B	TI-TPG80	TI-PG102F	TI-PG80F	TI-PG50F
Ports	4 x Gigabit PoE+, 2 x SFP	8 x M12 Gigabit PoE+	8 x Gigabit PoE+, 2 x SFP	8 x Gigabit PoE+	4 x Gigabit PoE+, 1 x Gigabit
PoE budget	60 – 120W	200W@48V DC, 100W@24V DC	240W	200W	120W
Max. power per port	30W	30W	30W	30W	30W
Switching capacity	12Gbps	16Gbps	20Gbps	16Gbps	10Gbps
RAM buffer	1MB	2MB	256KB	1MB	1MB
MAC address table	1K	11K	16K	4K	2K
Temperature	-40° – 75° C (-40° – 167° F)	-40° – 75° C (-40° – 167° F)	-40° – 75° C (-40° – 167° F)	-40° – 75° C (-40° – 167° F)	-40° – 75° C (-40° – 167° F)
Housing	IP30	IP30	IP30	IP30	IP30
Mounting	DIN-Rail / Wall	Wall	Wall / DIN-Rail	Wall / DIN-Rail	Wall / DIN-Rail
Power supply	TI-S12048, TI-S24048**	TI-S24048**	TI-S24048, TI-S48048 or 48VDC3000**	TI-S24048, TI-S48048, 48VDC3000**	TI-S24048, TI-S48048, 48VDC3000**
Warranty	Lifetime*	Lifetime*	Lifetime*	Lifetime*	Lifetime*



	Industrial Gigabit Switches				Industrial 10/100 Switches	
	TI-G102	TI-G80	TI-G50	TI-G62	TI-E80	TI-E50
Ports	8 x Gigabit, 2 x shared Gigabit (RJ-45 / SFP)	8 x Gigabit	5 x Gigabit	4 x Gigabit, 1 x SFP, 1 x shared Gigabit (RJ-45 / SFP)	8 x 10/100Mbps	5 x 10/100Mbps
Switching capacity	20Gbps	16Gbps	10Gbps	12Gbps	1.6Gbps	1Gbps
RAM buffer	2MB	1MB	1MB	1MB	56KB	56KB
MAC address table	16K	8K	8K	2K	1K	1K
Temperature	-40° – 75° C (-40° – 167° F)	-40° – 75° C (-40° – 167° F)	-40° – 75° C (-40° – 167° F)	-40° – 75° C (-40° – 167° F)	-40° – 75° C (-40° – 167° F)	-40° – 75° C (-40° – 167° F)
Housing	IP30	IP30	IP30	IP30	IP30	IP30
Mounting	DIN-Rail / Wall	DIN-Rail / Wall	DIN-Rail / Wall	DIN-Rail / Wall	DIN-Rail / Wall	DIN-Rail / Wall
Power supply	TI-M6024**	TI-M6024**	TI-M6024**	TI-M6024**	TI-M6024**	TI-M6024**
Warranty	Lifetime*	Lifetime*	Lifetime*	Lifetime*	Lifetime*	Lifetime*

*See warranty policy at TRENDnet.com

**Power supply required

Industrial Fiber



	Industrial Gigabit Fiber Converters			Industrial 100Mbps Fiber Converters	
	TI-UF11SFP	TI-PF11SFP	TI-F11SFP	TI-F10S30	TI-F10SC
Description	SFP to Gigabit UPoE	SFP to Gigabit PoE+	100/1000BASE-T to SFP	100BASE-FX Single-Mode SC	100BASE-FX Multi-Mode SC
Fiber mode	Based on SFP	Based on SFP	Based on SFP	Single	Multi
Fiber converter	SFP	SFP	SFP	Duplex SC	Duplex SC
PoE budget	60W	30W	-	-	-
Distance	Based on SFP	Based on SFP	Based on SFP	30km (18.6 mi.)	2km (1.2 mi.)
Temperature	-40° – 75° C (-40 – 167° F)	-40° – 75° C (-40 – 167° F)	-40° – 75° C (-40 – 167° F)	-40° – 75° C (-40 – 167° F)	-40° – 75° C (-40 – 167° F)
Housing	IP30	IP30	IP30	IP40	IP40
Wavelength	Based on SFP	Based on SFP	Based on SFP	1310nm	1310nm
Mounting	DIN-Rail / Wall	DIN-Rail / Wall	DIN-Rail / Wall	DIN-Rail / Wall	DIN-Rail / Wall
Power supply	TI-S12048**	TI-S12048**	TI-M6024**	TI-M6024**	TI-M6024**
Warranty	Lifetime*	Lifetime*	Lifetime*	Lifetime*	Lifetime*



	Industrial SFP Modules		
	TI-MGBSX	TI-MGBS10	TI-MGBS40
Fiber mode	Multi	Single (10km)	Single (40km)
Warranty	Lifetime*	Lifetime*	Lifetime*

*See warranty policy at TRENDnet.com

**Power supply required

SMB Wireless Solutions

See more wireless solutions in the Routers and Adapters section.



Workplace connectivity is crucial for efficient and productive offices. TRENDnet's reliable SMB wireless solutions keep you connected to what's important.

Business Routers

Ensures optimal performance, scalability, and protection for your network. Features advanced content filtering with Router Limits™.

Hardware Controllers

Designed to simplify management and setup processes for up to 128 TRENDnet access points. Supports seamless WiFi roaming.

Indoor & Outdoor Access Points

Indoor APs to maximize WiFi coverage and minimize dead spots. Outdoor APs for surveillance systems and building-to-building connectivity.

Français:

La connectivité sur le lieu de travail est essentielle pour des bureaux efficaces et productifs. Les solutions WiFi fiables de TRENDnet pour les PME vous permettent de rester connecté à l'essentiel. La gamme WiFi PME avancée de TRENDnet comprend des routeurs professionnels, des contrôleurs matériels et des points d'accès intérieurs et extérieurs.

Deutsch:

Die Konnektivität am Arbeitsplatz ist für effiziente und produktive Büros unabdingbar. Mit den zuverlässigen SMB-Wireless-Lösungen von TRENDnet bleiben Sie in Verbindung mit dem, was wichtig ist. Das erweiterte SMB Wi-Fi-Portfolio von TRENDnet umfasst Business-Router, Hardware-Controller und Access Points für den Innen- und Außenbereich.

Português:

A conectividade no local de trabalho é crucial para escritórios eficientes e produtivos. As soluções sem fio SMB da TRENDnet são confiáveis e mantêm você conectado ao que é importante. O avançado portfólio SMB WiFi da TRENDnet inclui roteadores comerciais, controladores de hardware e pontos de acesso internos e externos.

Español:

La conectividad en el entorno de trabajo resulta crucial para lograr unas oficinas eficientes y productivas. Las soluciones wireless confiables para PyMES de TRENDnet le mantienen conectado a lo más importante. La serie de productos WiFi avanzados para PyMES de TRENDnet abarca routers empresariales, controladores de hardware, así como puntos de acceso interiores y exteriores.

SMB Networking



PoE+ Wireless LAN Controller

Wireless LAN Controller

TEW-WLC100P

TEW-WLC100

Features	Centralized AP management and seamless WiFi roaming, 60W PoE budget	Centralized AP management and seamless WiFi roaming
Ports	4 x Gigabit PoE+, 1 x Gigabit, 1 x USB	5 x Gigabit, 1 x USB
Max. APs	Up to 128	
Seamless roaming	802.11k, 802.11r, OKC	
AP management	Bandwidth control, IP address settings, client blacklist, grouping, provisioning, batch upgrades, RSSI threshold, SSID encryption	
VLAN	802.1Q	
WLAN monitoring	AP, clients, statistics	
Hotspot	Customizable Captive Portal support	
Map view	WAP Maps™ provide visual overview	
Compatible APs	TEW-826DAP, TEW-825DAP, TEW-821DAP, TEW-755AP	
Warranty	3 year	3 year



Wireless Controller Kits

TEW-821DAP2KAC

TEW-755AP2KAC

Access points	2 x AC1200 PoE APs (TEW-821DAP)	2 x N300 PoE APs (TEW-755AP)
Injectors	2 x PoE Injectors (TPE-113GI)	2 x PoE Injectors (TPE-113GI)
Controller	1 x TEW-WLC100	1 x TEW-WLC100
Warranty	3 year	3 year



Business Routers

TEW-829DRU

TWG-431BR

Wireless rating	AC3000	-
Max. data rate / WiFi band	1733Mbps (5GHz1) + 867Mbps (5GHz2) + 400Mbps (2.4GHz)	-
Ports	8 x Gigabit LAN, 2 x Gigabit WAN, 1 x USB 3.0, 1 x RJ-45 console	5 x Gigabit (4WAN + 1LAN OR 4LAN + 1WAN), 1 x USB 3.0, 1 x RJ-45 console
Features	Router Limits™, Multi-WAN, VPN router, rack mountable, wall mountable	Router Limits™, Multi-WAN, VPN router, rack mountable
VPN	PPTP / L2TP, L2TP with IPsec, IPsec, SSL VPN	PPTP / L2TP, L2TP with IPsec, IPsec, SSL VPN
Multi-WAN	Fail-over / load balancing / WAN protocol binding	Fail-over / load balancing
Access controls	Router Limits™, MAC / IP filter, DMZ / Port Forwarding / One-to-One NAT	Router Limits™, MAC / IP filter, DMZ / Port Forwarding
Management	HTTP / HTTPS, Telnet / SSH, console	HTTP / HTTPS, Telnet / SSH, console
VLAN	802.1Q VLAN / Inter-VLAN routing; multiple SSID with VLAN tagging	802.1Q VLAN / Inter-VLAN routing
Scheduling	Auto power cycle, auto update, radios on / off	Auto power cycle, auto update, WoL
Warranty	3 year	3 year

PoE Access Points



	Outdoor					Indoor			
	TEW-841APBO	TEW-840APBO	TEW-840APB02K	TEW-740APBO	TEW-740APB02K	TEW-826DAP	TEW-825DAP	TEW-821DAP	TEW-755AP
Features	Omni-directional, point-to-point, point-to-multi-point	Point-to-point / CPE	Preconfigured point-to-point bridge kit	Point-to-point / CPE	Preconfigured point-to-point bridge kit	Wireless Wave 2 AC2200	Wireless AC1750	Wireless Wave 2 AC1200	Wireless N300
Max. data rate / Wi-Fi band	867Mbps / 5GHz AC 400Mbps / 2.4GHz N	867Mbps / 5GHz AC	867Mbps / 5GHz AC	300Mbps / 2.4GHz N	300Mbps / 2.4GHz N	867Mbps / 5GHz AC1 867Mbps / 5GHz AC2 400Mbps / 2.4GHz N	1300Mbps / 5GHz AC 450Mbps / 2.4GHz N	867Mbps / 5GHz AC 400Mbps / 2.4GHz N	300Mbps / 2.4GHz N
Ports	1 x Gigabit PoE+	1 x Gigabit Proprietary PoE, 1 x Gigabit LAN2	1 x Gigabit Proprietary PoE, 1 x Gigabit LAN2	1 x 10/100Mbps Proprietary PoE, 1 x 10/100Mbps LAN2		1 x Gigabit PoE+, 1 x Gigabit	1 x Gigabit PoE+	1 x Gigabit PoE	1 x Gigabit PoE
Antenna strength	4 x 5 dBi	14 dBi directional	14 dBi directional	10 dBi directional	10 dBi directional	2.4GHz: 2 x 5 dBi 5GHz1: 2 x 5 dBi 5GHz2: 2 x 5 dBi	2.4GHz: 3 x 4 dBi 5GHz: 3 x 4 dBi	2.4GHz: 2 x 3 dBi 5GHz: 2 x 4 dBi	2.4GHz: 2 x 4 dBi
Management utility	-	-	-	-	-	✓	✓	✓	✓
Wireless Distribution System (WDS)	✓	✓	✓	✓	✓	✓	✓	✓	✓
Repeater mode	-	-	-	-	-	✓	✓	✓	✓
Client mode	Client Bridge	Client Bridge + AP, WISP (CPE) + AP	Client Bridge + AP, WISP (CPE) + AP	Client Bridge + AP, WISP (CPE) + AP		AP Client	AP Client	AP Client	AP Client
Additional SSIDs	16 (8 per band)	7	7	7	7	24 (8 per band)	16 (8 per band)	16 (8 per band)	8
Max. encryption	WPA2	WPA2	WPA2	WPA2	WPA2	WPA2	WPA2	WPA2	WPA2
Operating temp.	-25° – 60° C (-13° – 140° F)	-20° – 60° C (-4° – 140° F)	-20° – 60° C (-4° – 140° F)	-20 – 60° C (-4 – 140° F)	-20 – 60° C (-4 – 140° F)	0 – 40° C (32 – 104° F)	0 – 40° C (32 – 104° F)	0 – 40° C (32 – 104° F)	0 – 40° C (32 – 104° F)
Mounting hardware	✓	✓	✓	✓	✓	✓	✓	✓	✓
Housing	IP67	IP56	IP56	IPX6	IPX6	IP30	IP30	IP30	IP30
Warranty	3 year	3 year	3 year	3 year	3 year	3 year	3 year	3 year	3 year

High-Definition Surveillance Solutions

TRENDNET

IP Cameras

TRENDnet's large surveillance camera portfolio allows you to choose the solutions ideally suited for your project(s). TRENDnet cameras are available with a wide range of options including 4K support, PoE, night vision, tamper resistance, and other advanced features.

Network Video Recorders

TRENDnet's HD NVR surveillance systems are comprehensive and cost-effective camera management solutions, allowing you to easily manage your entire surveillance network from a single interface. Navigate the intuitive interface to set live view preferences, recording schedules, and advanced playback options.

Français:

La gamme de caméras de surveillance TRENDnet vous permet de choisir les solutions idéales pour vos projets. Les systèmes de surveillance NVR HD de TRENDnet sont des solutions de gestion de caméras complètes et économiques, vous permettant de gérer facilement l'ensemble de votre réseau de surveillance à partir d'une seule interface.

Deutsch:

Mit dem Überwachungskamera-Portfolio von TRENDnet können Sie die für Ihre Projekte optimal geeigneten Lösungen auszuwählen. Die HD-NVR-Überwachungssysteme von TRENDnet sind umfassende und kostengünstige Kameramanagement-Lösungen, mit denen Sie Ihr gesamtes Überwachungsnetzwerk einfach über eine einzige Schnittstelle verwalten können.

Português:

O portfólio de câmeras de vigilância da TRENDnet permite que você escolha as soluções ideais para seus projetos. Os sistemas de vigilância HD NVR da TRENDnet são soluções de gerenciamento de câmera abrangentes e econômicas, permitindo que você gerencie facilmente toda a sua rede de vigilância a partir de uma única interface.

Español:

La gama de cámaras de vigilancia de TRENDnet le permite seleccionar las soluciones más idóneas para sus proyectos. Los sistemas de vigilancia HD NVR de TRENDnet son soluciones de administración de cámaras integrales y económicas que le permiten administrar con facilidad toda su red de vigilancia desde una sola interfaz.

PoE Surveillance Cameras



	Thermal Camera	Speed Dome	Motorized Dome	Multi-Lens PTZ	Fixed Turret
	TV-IP350PTI	TV-IP440PI	TV-IP420P	TV-IP460PI	TV-IP323PI
Features	Thermal Imaging	2MP HD PTZ w/ night vision	3MP HD motorized lens	8MP HD H.265 Multi-Sensor w/ night vision	4MP HD H.265 fixed turret w/ night vision
Connectivity	PoE	PoE+	PoE	PoE+	PoE
Free app	Apple® / Android™				
Free software	Manage up to 32 TRENDnet cameras				
Housing	IP66	IP66	IP66	IP67	IP67
Compression	H.265+, H.265, H.264+, H.264, MJPEG	H.264, MJPEG	H.264, MJPEG	H.265+, H.265, H.264+, H.264, MJPEG	H.265+, H.265, H.264+, H.264, MJPEG
Max. resolution	1920 x 1080 (optical), 320 x 240 (thermal)	1920 x 1080	2048 x 1536	1920 x 1080	2560 x 1440
Image sensor	1/2.8" Progressive Scan CMOS	1/2.8" Progressive Scan CMOS	1/2.8" Progressive Scan CMOS	Four 1/2.8" Progressive Scan CMOS	1/3" Progressive Scan CMOS
Lens	4mm @ F1.1	4.7 – 94mm @ F1.6 – 3.5	2.8 – 12mm @ F1.6 – F2.7	PTZ: 2.8 – 12mm @ F2.0 – 2.4 Fixed lens: 2mm @ F2.0	4mm @ F1.6
Viewing angle	87°	58.3 – 3.2° (wide-tele)	105 – 33.5° (wide-tele)	PTZ: 120 – 56.6° (wide-tele) Fixed lens: 128.5°	78°
Zoom	8x Digital	20x Optical, 16x digital, auto-focus	4x Optical, 16x digital, auto-focus	PTZ: 4x Optical, 8x digital	4x Digital
Audio support	Two-way audio (audio line in / line out)	Two-way audio (audio line in/line out)	Two-way audio (audio line in / line out)	Two-way audio (audio line in/line out)	-
Vision	Night vision up to 40m	Night vision up to 100m	0.01 lux	Night vision up to 10m radius	Night vision up to 30m
Pan & tilt	-	Endless 360°	Motorized lens: Pan 350° and tilt 90°	Motorized lens: Pan 350° and tilt: 90°	3-axis manually adjustable mount
Network	IPv4, IPv6	IPv4, IPv6	IPv4, IPv6	IPv4, IPv6	IPv4, IPv6
ONVIF	Profile S	Profile S	Profile S	Profile S	Profile S, Profile G, Profile T
Power consumption	12W	20W max.	8W max.	24W max.	6W max.
Micro SD slot	✓ (up to 128GB)	✓ (up to 128GB)	✓ (up to 128GB)	✓ (up to 256GB)	✓ (up to 128GB)
Operating temp.	-40° – 60° C (-40° – 140° F)	-30° – 65° C (-22° – 149° F)	-30° – 65° C (-22° – 149° F)	-10° – 50° C (14° – 122° F)	-30° – 60° C (-22° – 140° F)
Hardware	Mounting hardware included	Mounting bracket required (TV-HC400, TV-HP400, TV-HW400, TV-HN400)	Optional: TV-WL300	Mounting hardware included	Mounting hardware included
Warranty	3 year	3 year	3 year	3 year	3 year

PoE Surveillance Cameras



Fixed Dome

	TV-IP319PI	TV-IP315PI	TV-IP327PI	TV-IP329PI	TV-IP345PI
Features	8MP 4K UHD H.265 WDR w/ night vision	4MP HD H.265 WDR w/ night vision	2MP HD H.265 WDR w/ night vision	4MP H.265 WDR w/ night vision	4MP HD varifocal H.265 WDR w/ night vision
Connectivity	PoE	PoE	PoE	PoE	PoE
Free app	Apple® / Android™				
Free software	Manage up to 32 TRENDnet cameras				
Housing	IP67	IP67	IP67	IP67	IP67
Compression	H.265+, H.265, H.264+, H.264, MJPEG				
Max. resolution	3840 x 2160	2688 x 1520	1920 x 1080	2560 x 1440	2560 x 1440
Image sensor	1/2.5" CMOS	1/2.8" CMOS	1/2.8" CMOS	1/3" CMOS	1/3" CMOS
Lens	2.8mm @ F1.2	4mm @ F1.2	4mm @ F1.2	4mm @ F1.2	2.8 – 12mm @ F1.6
Viewing angle	102°	86°	86°	77°	98 – 28° (wide-tele)
Zoom	4x Digital	4x Digital	4x Digital	4x Digital	4.2x Optical, 4x digital
Audio support	-	-	-	-	-
Night vision	Up to 30m (98 ft.)	Up to 30m (98 ft.)	Up to 30m (98 ft.)	Up to 30m	Up to 30m (98 ft.)
Pan & tilt	Fixed position: Manually pan 355° and tilt 75°	Fixed position: Manually pan 355° and tilt 75°	Fixed position: Manually pan 355° and tilt 75°	Fixed position: Manually pan 355° and tilt 70°	Fixed position: Manually pan 360° and tilt 90°
Network	IPv4, IPv6	IPv4, IPv6	IPv4, IPv6	IPv4, IPv6	IPv4, IPv6
ONVIF	Profile S, Profile G	Profile S, Profile G	Profile S, Profile G	Profile S	Profile S, Profile G
Power consumption	9W max.	9W max.	9W max.	7W max.	12.9W max.
Micro SD slot	✓ (up to 128GB)	✓ (up to 128GB)	✓ (up to 128GB)	-	✓ (up to 128GB)
Operating temp.	-30° – 60° C (-22° – 140° F)	-30° – 60° C (-22° – 140° F)	-30° – 60° C (-22° – 140° F)	-30° – 50° C (-22° – 122° F)	-30° – 50° C (-22° – 122° F)
Hardware	Optional: TV-WS300	Optional: TV-WS300	Optional: TV-WS300	Mounting hardware included	Mounting hardware included
Warranty	3 year	3 year	3 year	3 year	3 year

PoE Surveillance Cameras



Fixed Bullet

	TV-IP318PI	TV-IP313PI	TV-IP314PI	TV-IP326PI	TV-IP328PI	TV-IP344PI
Features	8MP 4K UHD H.265 WDR w/ night vision	5MP HD H.265 WDR w/ enhanced night vision	4MP HD H.265 WDR w/ night vision	2MP H.265 WDR w/ night vision	4MP H.265 WDR w/ night vision	4MP HD varifocal H.265 WDR w/ night vision
Connectivity	PoE	PoE	PoE	PoE	PoE	PoE
Free app	Apple® / Android™					
Free software	Manage up to 32 TRENDnet cameras					
Housing	IP67	IP67	IP67	IP67	IP67	IP67
Compression	H.265+, H.265, H.264+, H.264, MJPEG					
Max. resolution	3840 x 2160	2944 x 1656	2688 x 1520	1920 x 1080	2560 x 1440	2560 x 1440
Image sensor	1/2.5" CMOS	1/2.9" CMOS	1/3" CMOS	1/2.8" CMOS	1/3" CMOS	1/3" Progressive scan CMOS
Lens	2.8mm @ F1.2	4mm @ F1.2	4mm @ F 1.2	4mm @ F1.2	4mm @ F1.2	2.8 – 12mm @ F1.6
Viewing angle	102°	63.5°	78°	86°	77°	115 – 32°
Zoom	4x Digital	4x Digital	4x Digital	4x Digital	4x Digital	4.2x Optical, 4x digital, auto-focus
Audio support	-	-	-	-	-	-
Night vision	Up to 30m (98 ft.)	Up to 80m (262 ft.)	Up to 30m (98 ft.)	Up to 30m (98 ft.)	Up to 30m (98 ft.)	Up to 30m (98 ft.)
Pan & tilt	-	-	-	-	-	-
Network	IPv4, IPv6	IPv4, IPv6	IPv4, IPv6	IPv4, IPv6	IPv4, IPv6	IPv4, IPv6
ONVIF	Profile S, Profile G		Profile S	Profile S, Profile G	Profile S, G, T	Profile S, Profile G
Power consumption	7.5W max.	12.5W max.	7.5W max.	7.5W max.	7W max.	12.9W max.
Micro SD slot	✓ (up to 128GB)	✓ (up to 128GB)	✓ (up to 128GB)	✓ (up to 128GB)	-	✓ (up to 128GB)
Operating temp.	-30° – 60° C (-22° – 140° F)	-30° – 60° C (-22° – 140° F)	-30° – 60° C (-22° – 140° F)	-30° – 60° C (-22° – 140° F)	-30° – 50° C (-22° – 122° F)	-30° – 60° C (-22° – 140° F)
Hardware	Mounting hardware included					
Warranty	3 year	3 year	3 year	3 year	3 year	3 year

Network Video Recorders



H.265 4K NVRs

	TV-NVR416	TV-NVR408
Features	Advanced camera viewing, recording, and playback	
Channels	16	8
PoE budget	150W	80W
Hard drive	2 x SATA up to 6TB each	2 x SATA up to 6TB each
Video interface	1 x HDMI, 1 x VGA	1 x HDMI, 1 x VGA
USB ports	2 x USB 2.0	2 x USB 2.0
Recording time*	Approx. one month of continuous 1080p HD recording	Over one month of continuous 1080p HD recording
Viewing modes	3 x 3, 1+7, 1+5, 2 x 2	3 x 3, 1+7, 1+5, 2 x 2
PTZ support	✓	✓
Audio support	✓	✓
Web GUI interface	✓	✓
Export file type	H.265, H.264, MPEG4	H.265, H.264, MPEG4
Mobile app	✓	✓
Included HDDs	-	-
Included camera(s)	-	-
Compatible cameras	Compatible with TRENDnet and third-party PoE cameras	
Mounting	✓	✓
Warranty	2 year	2 year



Fiber Media Converters



Intelligent Gigabit Multi-Mode

100Mbps Multi-Mode

	TFC-1000MSC	TFC-1000MGB	TFC-1000MGA	TFC-110MST	TFC-110MSC
Description	Intelligent 1000BASE-T to 1000BASE-SX multi-mode SC	Intelligent 1000BASE-T to SFP	100/1000BASE-T to SFP	100BASE-TX to 100BASE-FX multi-mode ST	100BASE-TX to 100BASE-FX multi-mode SC
Fiber mode	Multi	Single / Multi	Single / Multi	Multi	Multi
Fiber connector	Duplex SC	SFP	SFP	Duplex ST	Duplex SC
Distance	550m (1800 ft.)	Based on SFP	Based on SFP	2km (1.2 mi.)	2km (1.2 mi.)
Wavelength	850nm	Based on SFP	Based on SFP	1300nm	1300nm
TFC-1600 compatible	✓	✓	✓	✓	✓
Standalone converter	✓	✓	✓	✓	✓
LLR dip switch	✓	✓	✓	-	-
Duplex dip switch	✓	✓	✓	✓	✓
Warranty	Lifetime*	Lifetime*	Lifetime*	Lifetime*	Lifetime*



Intelligent WDM Single-Mode

Fiber modes: Single-mode / Simplex SC
 Fiber connections: Gigabit / 100Mbps
 Distances: 60km (37.3 mi.), 40km (24.9 mi.), 20km (12.4 mi.), 10km (6.2 mi.)



Single-Mode

Fiber modes: Duplex SC
 Fiber connections: Gigabit / 100Mbps
 Distances: 70km (43.5 mi.), 60km (37.3 mi.), 50km (31 mi.), 30km (18.6 mi.), 20km (12.4 mi.), 15km (9.3 mi.)
 Wavelengths: 1550nm, 1310nm



Fiber Chassis

	TFC-1600	TFC-1600MM	TFC-1600RP
Features	TRENDnet's 16-Bay Fiber Chassis System provides housing for up to 16 TFC series media converters.	Supports management of media converters and power supplies installed in the TFC-1600. Provides instant access to cooling fan and power supply status; allows user to configure and monitor chassis.	Hot swappable 100-240 VAC redundant power supply. Built-in over voltage and short circuit protection. Power supply backup for TFC-1600.
Warranty	Lifetime*	Lifetime*	Lifetime*

*See warranty policy at TRENDnet.com

Fiber SFP Modules

See more Fiber solutions in the Multi-Gigabit and Industrial sections.



Multi-Mode

Interface: Duplex LC
 Distances: 2km (1.2 mi.), 550m (1,804 ft.)
 Speeds: 1.25Gbps, 155Mbps



WDM Single-Mode

Interface: Simplex LC
 Distances: 80km (49.7 mi.), 40km (24.8 mi.), 20km (12.4 mi.), 10km (6.2 mi.)
 Speed: 1.25Gbps



Copper

Interface: RJ-45
 Distance: 100m (328 ft.)
 Speed: 1.25Gbps



Single-Mode

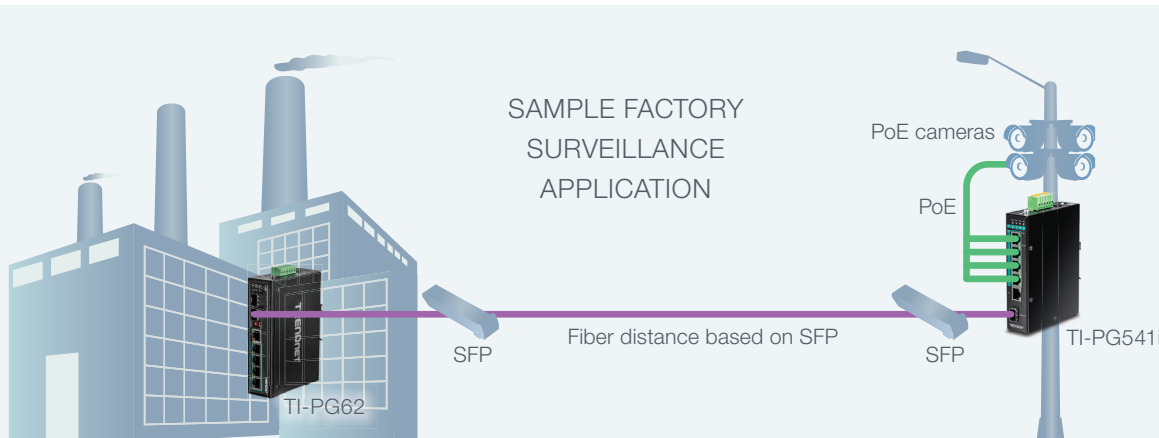
Interface: Duplex LC
 Distances: 80km (49.7 mi.), 40km (24.8 mi.), 20km (12.4 mi.), 10km (6.2 mi.)
 Speeds: 1.25Gbps, 155Mbps



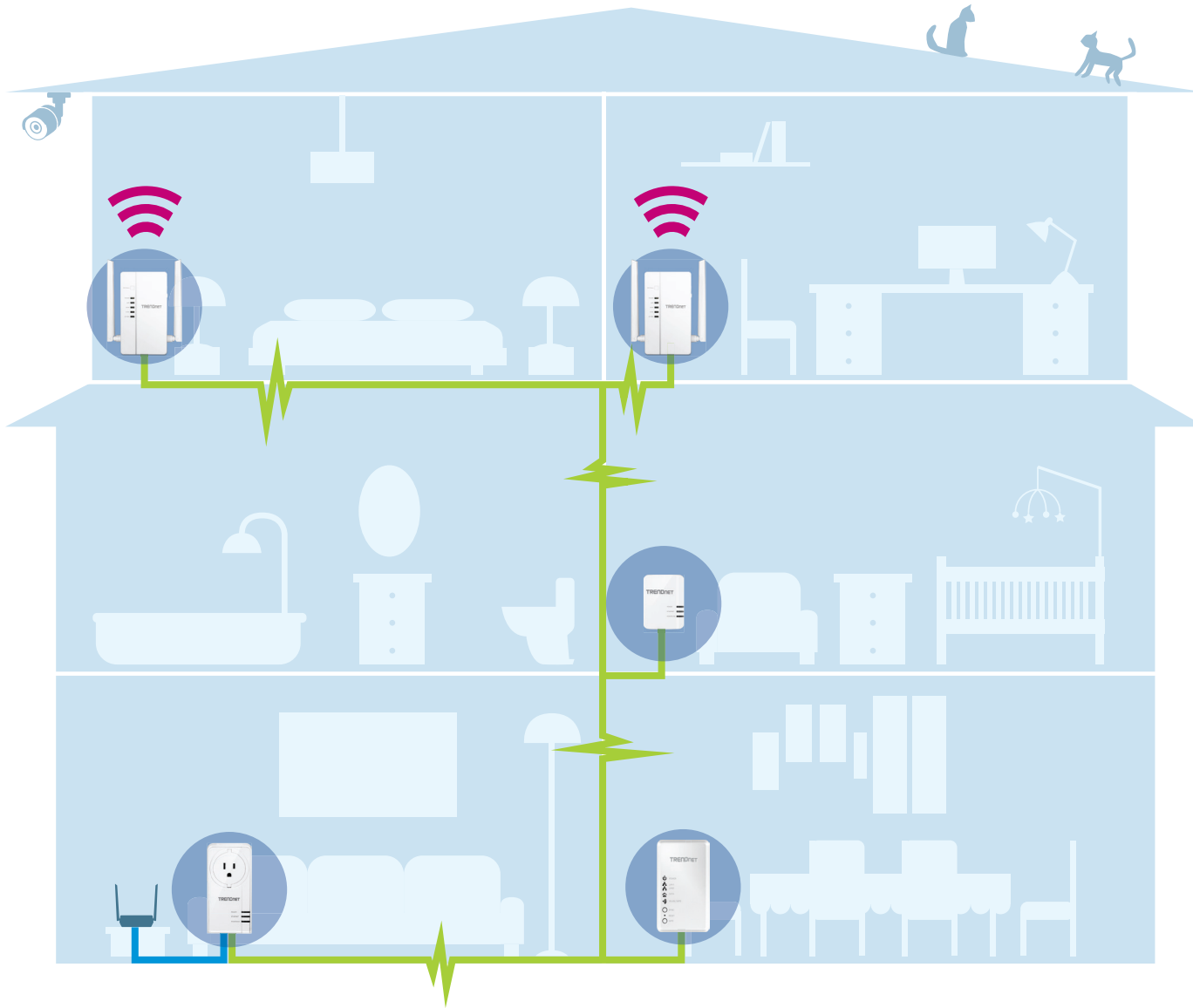
Layer 2 Managed SFP Switch

TL2-FG142

Ports	14 x SFP, 2 x shared RJ-45 Gigabit, 1 x RJ-45 Fast Ethernet management, 1 x RJ-45 console
Switching capacity	28Gbps
Ram buffer	128MB
Forwarding rate 64-byte	20.8Mpps
Mac address table	8K
VLAN	Asymmetric, port based, multiple management assignment, up to 256 VLAN groups, 802.1Q, dynamic GVRP, private, voice
ACL	IPv4 L2-L4 & IPv6
Ipv6	✓
Dos prevention	✓
802.1ab lldp	✓
802.1x	✓
Dynamic gvrp	✓
LACP (802.3ad)	✓
Rmon	✓
CoS (802.1p)	✓
Spanning tree	STP, RSTP, MSTP
Multicast (IGMP)	v1, v2, v3
Snmp	v1, v2c, v3
Port based link aggregation	✓
Jumbo frame support	9.6KB
Fan	Fanless
Mounting	Rack
Warranty	Lifetime*



Powerline: Networking Over Electrical Lines



Powerline adapters can easily provide you with access to the internet from your existing power outlets. TRENDnet Powerline adapters utilize your existing electrical wiring to create or expand a wired network. TRENDnet's WiFi Everywhere™ Powerline solutions provide wireless connectivity through your power outlets with built-in access points in each adapter. These Powerline adapters are especially useful for brick and stone buildings where Wi-Fi signals have difficulty penetrating walls.

Français:

Les adaptateurs CPL vous permettent d'accéder facilement à Internet à partir de vos prises de courant existantes. Les adaptateurs CPL TRENDnet utilisent votre câblage électrique existant pour créer ou étendre un réseau câblé. Les solutions CPL WiFi Everywhere™ de TRENDnet fournissent une connectivité sans fil par l'intermédiaire de vos prises de courant avec des points d'accès intégrés à chaque adaptateur.

Deutsch:

Mit Powerline-Adaptern können Sie über Ihre vorhandenen Steckdosen auf das Internet zugreifen. TRENDnet Powerline Adapter nutzen Ihre vorhandene elektrische Verkabelung, um ein kabelgebundenes Netzwerk aufzubauen oder zu erweitern. Die Wi-Fi Everywhere™ Powerline-Lösungen von TRENDnet bieten Wireless-Konnektivität über Ihre Steckdosen mit integrierten Access Points in jedem Adapter.

Português:

Os adaptadores Powerline podem facilmente fornecer acesso à internet a partir de suas tomadas elétricas existentes. Os adaptadores Powerline da TRENDnet utilizam sua fiação elétrica existente para criar ou expandir uma rede com fio. As soluções WiFi Everywhere™ Powerline da TRENDnet fornecem conectividade sem fio através de suas tomadas elétricas com pontos de acesso integrados em cada adaptador.

Español:

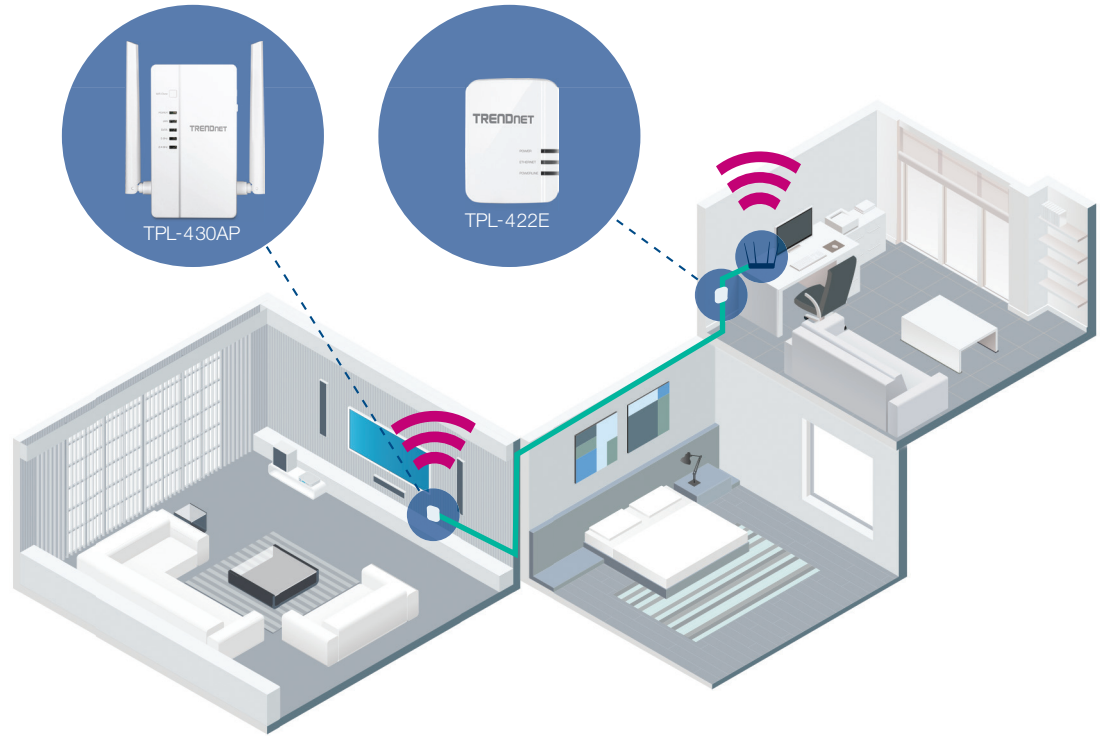
Los adaptadores Powerline le ofrecen un acceso sencillo a Internet desde sus tomas de corriente existentes. Los adaptadores Powerline de TRENDnet utilizan su cableado eléctrico existente para crear o ampliar una red por cable. Las soluciones WiFi Everywhere™ Powerline de TRENDnet ofrecen conectividad wireless a través de sus tomas de corriente, con puntos de acceso integrados en cada adaptador.

Powerline



WiFi Everywhere™ Powerline 1200

	TPL-430APK	TPL-430AP
Max. speed	1200Mbps	1200Mbps
Specification	AV2	AV2
Port(s)	TPL-430AP: 3 x Gigabit TPL-423E: 1 x Gigabit	3 x Gigabit
Powerline coverage	300m / 984 ft. linear distance over electrical lines	
Power savings	✓	✓
Features	Plug in both adapters to extend a Wireless AC network	Extend your network with built-in AC1200 Wireless
Warranty	3 year	3 year



Powerline 1300

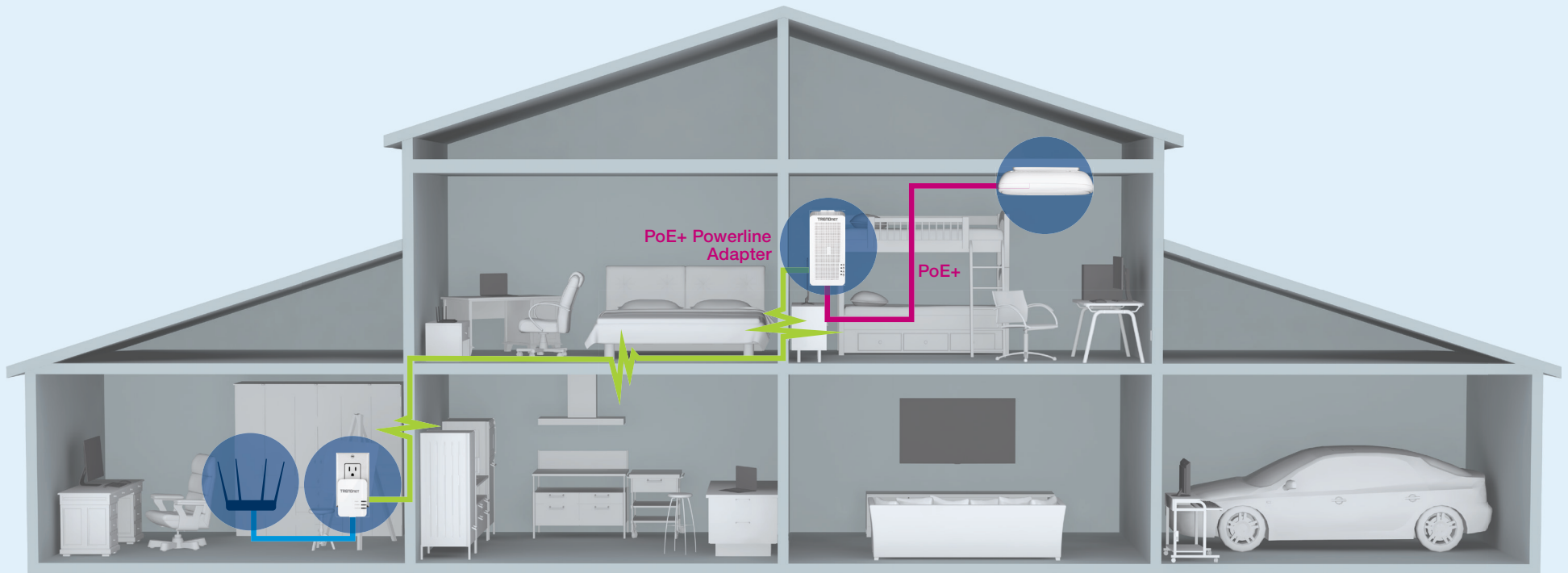


Powerline 500



	TPL-423E2K / TPL-423E	TPL-422E2K / TPL-422E	TPL-407E2K	TPL-406E2K
Max. speed	1300Mbps	1300Mbps	500Mbps	500Mbps
Specification	AV2	AV2	AV	AV
Port(s)	1 x Gigabit	1 x Gigabit	1 x 10/100Mbps	1 x 10/100Mbps
Powerline coverage	300m / 984 ft. linear distance over electrical lines			
Power savings	✓	✓	✓	✓
Features	High performance adapters with built-in electrical outlet	High performance adapters, compact design	Convenient built-in electrical outlet	Performance and value
Warranty	3 year	3 year	3 year	3 year

PoE+ Powerline



Coming Soon

Coming Soon

PoE+ Powerline

	TPL-431EPK	TPL-431EP
Max. speed	1500Mbps	1500Mbps
Specification	AV2	AV2
Port	TPL-431EP: 1 x PoE+ output, TPL-422E: 1 x Gigabit	1 x PoE+ output
Powerline coverage	300m / 984 ft. linear distance over electrical lines	
Features	Plug in both adapters to extend a PoE+ signal	Built-in PoE+ support
Warranty	3 year	3 year

No need to worry about fishing wires inside and through walls, simply connect PoE+ devices over a Powerline network using your existing electrical system. This is a great way to avoid long Ethernet cable runs to PoE+ devices such as access points, surveillance cameras, and VoIP handsets.

Routers and Adapters

See more wireless solutions in the SMB Wireless section.



	Mesh WiFi		WiFi Routers			WiFi Access Point
	TEW-830MDR	TEW-830MDR2K	TEW-827DRU	TEW-831DR	TEW-816DRM	TEW-638APB
Wireless rating	AC2200	AC2200	AC2600	AC1200	AC750	N300
Max. data rate / Wi-Fi band	867Mbps (5GHz1) + 867Mbps (5GHz2) + 400Mbps (2.4GHz)	867Mbps (5GHz1) + 867Mbps (5GHz2) + 400Mbps (2.4GHz)	1.73Gbps / AC + 800Mbps / N	867Mbps / AC + 300Mbps / N	433Mbps / AC + 300Mbps / N	300Mbps / 2.4GHz
Ports	2 x Gigabit	2 x Gigabit (each)	4 x Gigabit	3 x 10/100 Mbps	4 x 10/100Mbps	1 x 10/100Mbps
Features	Mesh	Mesh, 2-Pack	MU-MIMO, high gain antennas	MU-MIMO	Combination VDSL2/ADSL2+ modem and WiFi AC750 router	Detachable antennas
USB port	1 x USB 3.0	1 x USB 3.0 (each)	USB 3.0	-	2 x USB 2.0	-
Guest network	✓	✓	✓	-	✓	-
Pre-encrypted	✓	✓	✓	✓	✓	-
Router Limits™	✓	✓	✓	-	-	-
Warranty	3 year	3 year	3 year	3 year	3 year	3 year



	WiFi Adapters				WiFi / Bluetooth® Adapters
	TEW-809UB	TEW-807ECH	TEW-808UBM	TEW-648UBM	TBW-108UB
Device	USB Adapter	PCIe Adapter	USB Adapter	USB Adapter	USB Adapter
Wireless rating	AC1900	AC1200	AC1200	N150	N150 + Bluetooth 4.0
Max. data rate / Wi-Fi band	1.3Gbps / AC + 600Mbps / N	867Mbps / AC + 300Mbps / N	867Mbps / AC + 300Mbps / N	150Mbps / N	150Mbps / N
Ports	USB 3.0	-	USB 2.0	USB 2.0	USB 2.0
Features	High gain detachable antennas & power amplifiers extend coverage	Magnetic base with detachable antennas	MU-MIMO, compact	Compact	Simultaneous WiFi & Bluetooth
OS compatibility	Windows® and Mac®	Windows®	Windows® and Mac®	Windows and Mac	Windows® and Mac®
Warranty	3 year	3 year	3 year	3 year	3 year

Rackmount KVM



Rackmount KVM

	TK-803R	TK-804R	TK-1603R
Computer connections	8	8	16
Display input	VGA	VGA	VGA
Max. resolution	2048 x 1536	2048 x 1536	2048 x 1536
Keyboard / mouse	USB / PS/2	USB / PS/2	USB / PS/2
Features	Adjustable auto-scan and audible feedback	On screen display and stackable up to 16 KVM switches (128 PCs)	Compact 1U rack height
Warranty	2 year	2 year	2 year



CAT5 KVM

KVM Extenders

Video Splitters

	TK-CAT508	TK-CAT5U	TK-CAT5P	TK-EX3	TK-EX4	TK-DEX5	TK-V201S	TK-V401S
Description	8-port CAT5 KVM switch	CAT5 USB server interface module	CAT5 PS/2 server interface module	KVM extension kit	KVM extension kit	KVM extension kit	2-port stackable video splitter	4-port stackable video splitter
Features	Manage up to 8 servers over CAT5 cables for distances up to 30m			Extends up to 150m (490 ft.)	Extends up to 100m (328 ft.)	DVI, audio support, up to 50m (164 ft.)	Clones or repeats a viewing field to up to four monitors (Doesn't extend a viewing field over multiple monitors)	
Warranty	2 year	2 year	2 year	2 year	2 year	2 year	2 year	2 year

Desktop KVM



	Desktop: DisplayPort / DVI Monitor + USB			Desktop: HD Monitor + USB Keyboard / Mouse						
	TK-440DP	TK-240DP	TK-232DV	TK-216i	TK-215i	TK-214i	TK-204UK	TK-222DVK	TK-422DVK	TK-U404
Computer connections	4	2	2	2	2	2	2	2	4	-
Monitor port	2 x DisplayPort 1.2	DisplayPort 1.2	DVI	HDMI	HDMI	DVI	DVI	DVI	DVI	-
Max. resolution	3840 x 2160	3840 x 2160	1920 x 1200 (Digital) 2048 x 1536 (Analog)	3840 x 2160	1920 x 1080	1920 x 1200	1920 x 1200 (Digital) 2048 x 1536 (Analog)	2560 x 1600	2560 x 1600	-
Keyboard / mouse	USB	USB	USB	USB	USB	USB	USB	USB	USB	USB
Audio support	✓	✓	✓	✓	✓	✓	✓	✓	✓	✓
Features	Dual Monitor	Bonus 2-port USB hub	Bonus 2-port USB hub	Ergonomic toggle switch	Ergonomic toggle switch	Ergonomic toggle switch	Bonus 2-port USB hub	Bonus 2-port USB hub	Bonus 2-port USB hub	4x USB device ports, Ergonomic toggle switch
Cables	TK-CP06	TK-CP06, TK-CP10, TK-CP15	-	Integrated	Integrated	Integrated	Included	Included	Included	Included
Warranty	2 year	2 year	2 year	2 year	2 year	2 year	2 year	2 year	2 year	2 year



	Desktop: VGA Monitor + USB Keyboard / Mouse					
	TK-217i	TK-209K	TK-207K	TK-409K	TK-407K	TK-423K
Computer connections	2	2	2	4	4	4
Monitor port	VGA	VGA	VGA	VGA	VGA	VGA
Max. resolution	2048 x 1536	2048 x 1536	2048 x 1536	2048 x 1536	2048 x 1536	2048 x 1536
Keyboard / mouse	USB	USB	USB	USB	USB	USB / PS/2
Audio support	-	✓	-	✓	-	✓
Features	Integrated cables	Top seller	Hot key commands	Hot key commands	Hot key commands	Hot key commands
Cables	Integrated	Included	Included	Included	Included	Included
Warranty	2 year	2 year	2 year	2 year	2 year	2 year

USB-C



USB-C Adapters

	TUC-ET5G	TUC-ET2G	TUC-ETG
Description	USB-C 3.1 to 5GBASE-T Ethernet adapter	USB-C 3.1 to 2.5GBASE-T Ethernet adapter	USB-C to Gigabit Ethernet adapter
Features	Windows® and Mac® compatible	Windows® and Mac® compatible	Windows® and Mac® compatible
Warranty	2 year	2 year	2 year



USB-C Hubs

USB-C Docking Cube

	TUC-H4E	TUC-ETGH3	TUC-DS1
Description	4-port USB-C ultra-mini hub	USB-C to Gigabit adapter + USB hub	Universal USB-C docking station
Features	Windows® and Mac® compatible	Windows® and Mac® compatible	Connect to your network and devices w/ a single cable
Warranty	2 year	2 year	2 year

USB



USB 3.0

	TU3-H4E	TU3-H4	TU3-ETGH3	TU3-ETG	TU3-DS2
Description	4-port USB 3.0 hub	4-port USB 3.0 hub	USB 3.0 to Gigabit adapter + USB hub	USB 3.0 to Gigabit adapter	Universal USB 3.0 docking station
Features	No CD installation required	No CD installation required	Windows® and Mac® compatible	Windows®, Mac®, Linux 2.6 compatible	Connect to your network and devices w/ a single cable
Warranty	2 year	2 year	2 year	2 year	2 year



USB Hubs & Peripherals

USB Adapters & Converters

	TU2-H10	TU2-700	TU2-ET100	TU-S9	TU-P1284
Description	10-port USB hub	7-port USB hub	USB to Ethernet adapter	USB to serial converter	USB to parallel 1284 converter
Features	Adds 10 USB 2.0 ports, no CD installation required	Adds 7 USB 2.0 ports, no CD installation required	Windows® and Mac® compatible	Convert to RS-232 serial port, Windows® and Mac® compatible	Use with parallel printer port, Windows® and Mac® compatible
Warranty	2 year	2 year	3 year	2 year	2 year

Member



Partners



Contact TRENDnet

Headquarters Address

20675 Manhattan Place
Torrance, CA 90501
USA

www.TRENDnet.com

Main Phone Number 310-961-5500
Toll Free Number 888-326-6061
Main Fax Number 310-961-5511

info@trendnet.com



Department

North America Sales
(US, Canada, UK)

Extension 1

sales@trendnet.com

International Sales

Extension 2

intlsales@trendnet.com (EMEA, APAC)
latam@trendnet.com (LATAM)

Marketing

marketing@trendnet.com

Customer Service

Extension 3

Online Feedback System
www.trendnet.com/company/feedback/

Pre-Sales

Extension 4

Technical Support

866-845-3673

Online Help Desk Ticket System
www.trendnet.com/support/helpdesk

866-994-1451

Premium Support (additional fee)
www.trendnet.com/support/premium_support

Some information may have changed since the printing of this catalog. For the latest product information and to view our complete product line, please visit our website. © Copyright 2019/2020 TRENDnet, Inc. All Rights Reserved.

30 ANNIVERSARY

The image features a large, dark blue '30' as the central focus. The '0' is a stylized globe showing the continents of North and South America. Above the globe, the word 'ANNIVERSARY' is written in a dark blue, sans-serif font, following the curve of the top of the globe. The background is a light blue gradient with a pattern of small, faint squares and dots.

