

TRENDNET®

PRODUCT CATALOG



SWITCHES

PoE

INDUSTRIAL

WIRELESS

SURVEILLANCE

POWERLINE



Index

About TRENDnet	3
Switches	5
Managed & Unmanaged Switches	
Multi-Gigabit: 2.5G/10G	9
Web Smart & EdgeSmart Switches	
Network Adapters	
SFP+ Modules	
PoE.....	11
Managed & Unmanaged Switches	
Long Range PoE Switches	
Injectors / Splitters / Extenders	
Access Points	See SMB Wireless
IP Cameras & NVRs.....	See Surveillance
Industrial.....	15
Managed & Unmanaged Switches	
Fiber Media Converters & SFP Modules	
SMB Wireless	18
Business Routers	
Wireless Controllers	
Indoor & Outdoor Access Points	
Surveillance	21
IP Cameras / Network Cameras	
PoE, Wireless, & Cloud Cameras	
NVRs & DVRs	
Fiber	27
Powerline.....	29
Routers and Adapters.....	32
KVM.....	33
USB.....	35
Contact TRENDnet.....	37

TRENDnet[®]

TRENDnet's vision is to build innovative, easy-to-use, and reliable Networks People Trust™. TRENDnet solutions network countless devices to enable your connected lifestyle and workplace. Building award-winning networking solutions since 1990, TRENDnet connects you with what you value most. Founded in Torrance, California, TRENDnet has grown to become a leading global networking hardware brand.





Price-to-Performance Leader

Multi-Award-Winning Product Line

Demonstrated Reliability

Exceptional Product Quality

Comprehensive Customer Support

Pre-Sales Engineering Support

Premium Technical Support Services

Français:

La vision de TRENDnet est de construire des réseaux novateurs, simples à utiliser et fiables sur lesquels les gens peuvent compter. Les solutions de TRENDnet mettent en réseaux d'innombrables périphériques qui simplifient votre style de vie et votre travail en ligne. En créant depuis 1990 des solutions de mise en réseau primées, TRENDnet vous connecte avec ce que vous avez de plus précieux. Fondé à Torrance, Californie, TRENDnet a grandi pour devenir une marque internationale de matériel, leader de la mise en réseau. TRENDnet est leader en matière de rapport qualité/prix, avec une ligne de produits primés, une fiabilité démontrée, une qualité de produits exceptionnelle, un service clientèle complet, une assistance en soutien en ingénierie d'avant-vente et des services d'assistance technique de premier plan.

Deutsch:

TRENDnet hat es sich zum Ziel gesetzt, innovative, einfach zu verwendende und zuverlässige Netzwerke zu erstellen, denen die Kunden vertrauen (Networks People Trust™). Die Lösungen von TRENDnet vernetzen unzählige Geräte, um Ihnen ein verbundenes Leben und Arbeiten zu ermöglichen. TRENDnet schafft seit 1990 preisgekrönte Netzwerklösungen und verbindet Sie mit dem, was Ihnen am wichtigsten ist. Seit der Gründung in Torrance, Kalifornien, ist TRENDnet zu einer weltweit führenden Netzwerkhardwaremarke geworden. TRENDnet verfügt über ein führendes Preis-Leistungsverhältnis mit einer mehrfach ausgezeichneten Produktreihe und erwiesener Zuverlässigkeit, herausragender Produktqualität, umfassendem Kundendienst, Engineering-Unterstützung vor dem Verkauf und erstklassigem technischen Support.

Português:

O objetivo da TRENDnet é sempre criar redes inovadoras, fáceis de usar e confiáveis. Soluções de rede da TRENDnet são compostas por inúmeros dispositivos para garantir o seu estilo de vida e trabalho conectados. Com soluções de rede premiadas desde 1990, com a TRENDnet você se conecta com o que você mais valoriza. Fundada em Torrance, Califórnia, a TRENDnet cresceu e se tornou uma marca líder de dispositivos de rede. A TRENDnet é líder na relação custo-desempenho, com uma multipremiada linha de produtos, confiabilidade, excepcional qualidade dos produtos, suporte ao cliente, suporte pré-vendas e serviços de suporte técnico premium.

Español:

La visión de TRENDnet es crear redes innovadoras, de fácil uso y de confianza (Networks People Trust™). Las soluciones de TRENDnet conectan en red los numerosos dispositivos que le permiten mantener su modo de vida y de trabajo conectados. TRENDnet, con sus premiadas soluciones de red desde 1990, le conecta con lo que usted más valora. Fundada en Torrance, California, TRENDnet ha crecido hasta convertirse en una marca líder en el mundo en hardware de redes. TRENDnet es líder en la relación precio/rendimiento, con una línea de productos galardonada con múltiples premios, solidez contrastada, calidad excepcional en sus productos, soporte integral al cliente, soporte de ingeniería previo a la venta y servicios de soporte técnico de primera categoría.

Reliable Network Switches

Unmanaged

Unmanaged

To help boost network efficiency and eliminate network congestion, unmanaged switches are designed to simply increase port density. Installation is plug and play with no special requirements or configuration needed.



EdgeSmart

TRENDnet's EdgeSmart switches feature web GUI management with just the most commonly used managed switch features such as VLAN, IGMP Snooping, QoS, and LACP. This helps to reduce unnecessary switch complexity.



Français:

Les switches non gérés sont conçus pour augmenter simplement la densité des ports. Les switches EdgeSmart de TRENDnet offrent une gestion de l'interface graphique Web avec les fonctionnalités les plus courantes des switches gérés. Les switches Web Smart prennent en charge des fonctions plus avancées et les switches de couche 2 de TRENDnet incluent des fonctions de gestion de premier ordre pour une meilleure surveillance et une intégration réseau flexible.

Deutsch:

Unverwaltete Switches wurden entwickelt, um die Portdichte einfach zu erhöhen. Die EdgeSmart-Switches von TRENDnet ermöglichen Web-GUI-Verwaltung mit den gängigsten Funktionen verwalteter Switches. Web-Smart-Switches unterstützen erweiterte Funktionen, und die Layer-2-Switches von TRENDnet bieten erstklassige verwaltete Funktionen für bessere Überwachung und flexible Netzwerkintegration.

See more switches in the Multi-Gigabit, PoE, and Industrial sections.

Advanced Management

Web Smart

For more sophisticated networks, Web Smart switches support advanced management features such as traffic management controls, IP routing, VLAN, QoS, access controls, link aggregation, troubleshooting, SNMP monitoring, per port MAC restriction, and dynamic ARP inspection.



Português:

Switches não gerenciados são projetados para simplesmente aumentar a densidade de portas. Os switches EdgeSmart da TRENDnet apresentam gerenciamento web GUI com os recursos mais comuns dos switches gerenciados. Os switches Web Smart suportam recursos mais avançados, e os switches Layer 2 da TRENDnet incluem gerenciamento dos principais recursos para um melhor monitoramento e integração da rede.

Layer 2

TRENDnet's Layer 2 switch solutions include premier managed features such as CLI, PoE control, IP static routing, access control lists, VLAN, IGMP snooping, QoS, RMON, SNMP trap, and syslog for monitoring and flexible network integration.



Español:

Los switches no administrados están diseñados para aumentar la densidad de puertos con facilidad. Los switches EdgeSmart de TRENDnet ofrecen administración GUI web con las funciones de switches administrados más frecuentes. Los switches Web Smart admiten funciones más avanzadas, y los switches de Capa 2 de TRENDnet ofrecen funciones administradas superiores para lograr una mejor monitorización y una integración de red flexible.

Managed Switches



	L2 Managed		Web Smart						EdgeSmart	
	TL2-G448	TL2-G244	TEG-524WS	TEG-204WS	TEG-284WS	TEG-2248WS	TEG-424WS	TEG-082WS	TEG-S50ES	TEG-S80ES
Ports	44 x Gigabit, 4 x shared gigabit (RJ-45/SFP)	20 x Gigabit, 4 x shared gigabit (RJ-45/SFP)	48 x Gigabit, 4 x shared gigabit (RJ-45/SFP)	16 x Gigabit, 4 x shared gigabit (RJ-45/SFP)	24 x Gigabit, 4 x shared gigabit (RJ-45/SFP)	48 x 10/100Mbps, 2 x gigabit, 2 x shared gigabit (RJ-45/SFP)	24 x 10/100Mbps, 2 x gigabit, 2 x shared gigabit (RJ-45/SFP)	8 x Gigabit, 2 x SFP	5 x Gigabit	8 x Gigabit
Switching fabric	96Gbps	48Gbps	104Gbps	40Gbps	56Gbps	17.6Gbps	12.8Gbps	20Gbps	10Gbps	16Gbps
RAM buffer	1MB	1MB	1.5MB	512KB	512KB	1.5MB	512KB	512KB	125KB	192KB
Forwarding rate (64-byte packet size)	71.4Mpps	35.7Mpps	77.4Mpps	29.8Mpps	41.7Mpps	13.1Mpps	9.5Mpps	14.9Mpps	7.44Mpps	11.9Mpps
MAC address table	16K	16K	16K	8K	8K	16K	8K	8K	2K	4K
VLAN	Asymmetric, port-based, 802.1Q, private, voice, GVRP, mac-based, protocol-based		Asymmetric, port-based, 802.1Q, private, voice, GVRP						Asymmetric, port-based, 802.1Q, private, voice, GVRP	
ACL	IPv4 L2-L4 & IPv6	IPv4 L2-L4 & IPv6	IPv4 L2-L4 & IPv6	IPv4 L2-L4 & IPv6	IPv4 L2-L4 & IPv6	IPv4 L2-L4 & IPv6	IPv4 L2-L4 & IPv6	IPv4 L2-L4 & IPv6	-	-
IPv6	✓	✓	✓	✓	✓	✓	✓	✓	-	-
Static IP routing	✓	✓	✓	✓	✓	-	-	-	-	-
DoS prevention	✓	✓	✓	✓	✓	✓	✓	✓	-	-
802.1ab LLDP	✓	✓	✓	✓	✓	✓	✓	✓	-	-
802.1X	✓	✓	✓	✓	✓	✓	✓	✓	-	-
Dynamic GVRP	✓	✓	✓	✓	✓	✓	✓	✓	-	-
LACP (802.3ad)	✓	✓	✓	✓	✓	✓	✓	✓	✓	✓
RMON	✓	✓	✓	✓	✓	✓	✓	✓	-	-
CoS (802.1p)	✓	✓	✓	✓	✓	✓	✓	✓	✓	✓
Spanning tree	STP, RSTP, MSTP	STP, RSTP, MSTP	STP, RSTP, MSTP	STP, RSTP, MSTP	STP, RSTP, MSTP	STP, RSTP, MSTP	STP, RSTP, MSTP	STP, RSTP, MSTP	STP, RSTP	STP, RSTP
Multicast (IGMP)	v1, v2, v3	v1, v2, v3	v1, v2, v3	v1, v2, v3	v1, v2, v3	v1, v2, v3	v1, v2, v3	v1, v2, v3	v1, v2, v3	v1, v2, v3
SNMP	v1, v2c, v3	v1, v2c, v3	v1, v2c, v3	v1, v2c, v3	v1, v2c, v3	v1, v2c, v3	v1, v2c, v3	v1, v2c, v3	v1, v2c	v1, v2c
Jumbo frames	10KB	10KB	10KB	10KB	10KB	10KB	10KB	10KB	9KB	9KB
Fan	Smart fans	Fanless	Fanless	Fanless	Fanless	Fanless	Fanless	Fanless	Fanless	Fanless
Rackmount	✓	✓	✓	✓	✓	✓	✓	✓	-	-
Warranty	Lifetime*	Lifetime*	Lifetime*	Lifetime*	Lifetime*	Lifetime*	Lifetime*	Lifetime*	Lifetime*	Lifetime*

Unmanaged Switches



	Gigabit Unmanaged Metal								Gigabit Unmanaged Plastic			
	TEG-S51SFP	TEG-S24g	TEG-S24Dg	TEG-S16g	TEG-S16Dg	TEG-S82g	TEG-S80g	TEG-S50g	TEG-S24D	TEG-S16D	TEG-S81g	TEG-S5g
Ports	4 x Gigabit, 1 x SFP	24 x Gigabit	24 x Gigabit	16 x Gigabit	16 x Gigabit	8 x Gigabit	8 x Gigabit	5 x Gigabit	24 x Gigabit	16 x Gigabit	8 x Gigabit	5 x Gigabit
Switching fabric	10Gbps	48Gbps	48Gbps	32Gbps	32Gbps	16Gbps	16Gbps	10Gbps	48Gbps	32Gbps	16Gbps	10Gbps
RAM buffer	128KB	512KB	512KB	512KB	512KB	192KB	192KB	128KB	512KB	256KB	192KB	128KB
MAC address table	2K	8K	8K	8K	8K	4K	4K	2K	8K	8K	4K	2K
Jumbo frames	9KB	10KB	10KB	10KB	10KB	9KB	9KB	9KB	9KB	9KB	9KB	9KB
GREENnet	-	✓	✓	✓	✓	✓	✓	✓	✓	✓	✓	✓
Internal power	-	✓	✓	✓	✓	-	-	-	-	-	-	-
Rackmount	-	✓	✓	✓	✓	-	-	-	-	-	-	-
Warranty	Lifetime*	Lifetime*	Lifetime*	Lifetime*	Lifetime*	Lifetime*	Lifetime*	Lifetime*	3 year	3 year	3 year	3 year

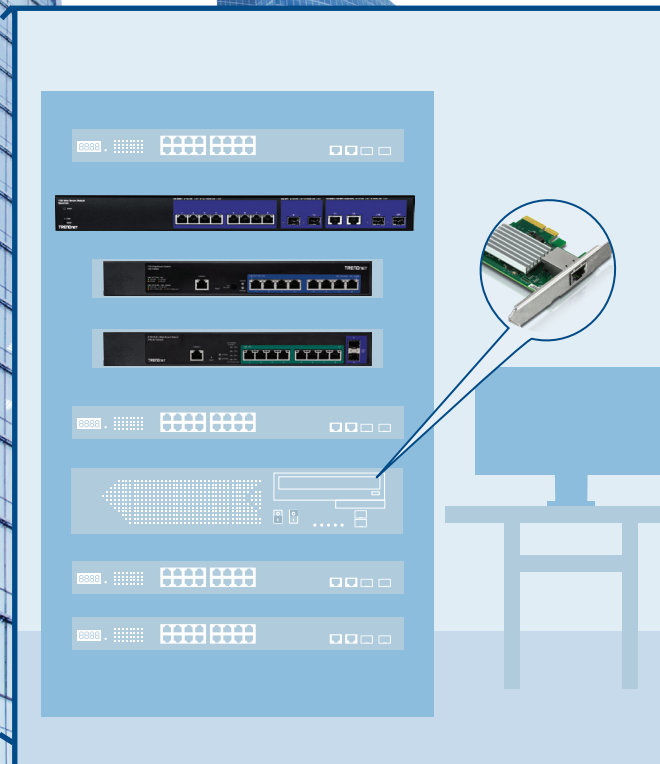


	10/100 Unmanaged Metal				10/100 Unmanaged Plastic		
	TE100-S24g	TE100-S16g	TE100-S16Eg	TE100-S50g	TE100-S16Dg	TE100-S8	TE100-S5
Ports	24 x 10/100Mbps	16 x 10/100Mbps	16 x 10/100Mbps	5 x 10/100Mbps	16 x 10/100Mbps	8 x 10/100Mbps	5 x 10/100Mbps
Switching fabric	4.8Gbps	3.2Gbps	3.2Gbps	1Gbps	3.2Gbps	1.6Gbps	1Gbps
RAM buffer	156KB	156KB	156KB	48KB	156KB	56KB	56KB
MAC address table	8K	8K	8K	1K	4K	1K	1K
GREENnet	✓	✓	✓	✓	✓	✓	✓
Internal power	✓	✓	-	-	-	-	-
Rackmount	✓	✓	-	-	-	-	-
Warranty	Lifetime*	Lifetime*	Lifetime*	Lifetime*	3 year	3 year	3 year

*See warranty policy at TRENDnet.com

2.5G/10G: Expand Your Network

TRENDnet's high-performance 10G and 2.5G network solutions are built to support high-bandwidth network applications, helping to reduce bottlenecking and improve network efficiency. Well-suited for edge layer switching, our Multi-Gigabit switches, and 10G SFP+ solutions are used in a wide-array of SMB applications, including large scale surveillance networks and camera installations.



Français:

Les solutions réseau haute performance 10G et 2,5G de TRENDnet sont conçues pour prendre en charge les applications réseau à large bande passante, ce qui contribue à réduire les goulots d'étranglement et à améliorer l'efficacité du réseau. Bien adaptés à la commutation des couches marginales, nos switches Multi-Gigabit et nos solutions SFP+ 10G sont utilisés dans un large éventail d'applications pour les PME, notamment les réseaux de surveillance à grande échelle et les installations de caméras.

Deutsch:

Die leistungsstarken 10G- und 2,5G-Netzwerklösungen von TRENDnet unterstützen Netzwerkanwendungen mit hoher Bandbreite und helfen, Engpässe zu reduzieren und die Netzwerkeffizienz zu verbessern. Unsere Multi-Gigabit-Switche und 10G SFP+-Lösungen eignen sich hervorragend für den Einsatz in einer Vielzahl von SMB-Anwendungen, einschließlich großer Überwachungsnetzwerke und Kamerainstallationen.

Português:

As soluções de rede 10G e 2.5G de alto desempenho da TRENDnet foram desenvolvidas para suportar aplicações de rede que demandem uma grande largura de banda, ajudando a reduzir o gargalo e melhorar a eficiência da rede. Adequado para comutação na camada de borda, nossos switches Multi-Gigabit e soluções 10G SFP+ são usados em uma ampla gama de aplicações SMB, incluindo redes de vigilância em grande escala e instalações de câmeras.

Español:

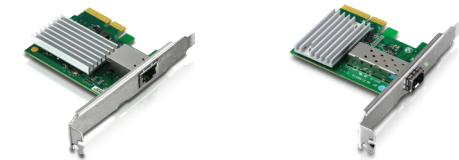
Las soluciones de red de alto rendimiento 10G y 2.5G de TRENDnet están concebidas para admitir aplicaciones de red de alto ancho de banda, lo cual contribuye a reducir los cuellos de botella y aumenta la eficiencia de la red. Nuestros switches Multi-Gigabit y soluciones 10G SFP+ son ideales para conmutación en capa de extremo y se utilizan en un amplio abanico de aplicaciones para PyMES, entre ellas las redes de vigilancia a gran escala y las instalaciones de cámaras.

Multi-Gigabit Networking



	10G Web Smart Switches		2.5G Web Smart Switches		10G EdgeSmart
	TEG-30284	TEG-40128	TPE-30102WS	TEG-30102WS	TEG-7080ES
Ports	24 x Gigabit, 4 x 10G SFP+	8 x 10GBASE-T, 2 x 10G SFP+, 2 x shared 10G (RJ-45/SFP+)	8 x 2.5GBASE-T PoE+, 2 x 10G SFP+, 1 x console (240W PoE budget)	8 x 2.5GBASE-T, 2 x 10G SFP+, 1 x console	8 x 10G / Multi-Gigabit, 1 x console
Switching fabric	128Gbps	240Gbps	80Gbps	80Gbps	160Gbps
RAM buffer	1.5MB	2MB	2MB	2MB	2MB
Forwarding rate (64-byte packet size)	95.2Mpps	178.56Mpps	59.5Mpps	59.5Mpps	119Mpps
MAC address table	16K	16K	16K	16K	16K
VLAN	Asymmetric, port-based, 802.1Q, private, voice, GVRP		Asymmetric, port-based, 802.1Q, private, voice		Asymmetric, port-based, 802.1Q
ACL	L2, L3, L4	L2, L3, L4	L2, L3, L4	L2, L3, L4	-
IPv6	✓	✓	✓	✓	✓
Static IP routing	-	-	✓	✓	-
DoS prevention	✓	✓	✓	✓	-
802.1ab LLDP	✓	✓	✓	✓	-
802.1X	✓	✓	✓	✓	-
Dynamic GVRP	✓	✓	-	-	-
LACP (802.3ad)	✓	✓	✓	✓	✓
RMON	✓	✓	✓	✓	-
CoS (802.1p)	✓	✓	✓	✓	✓
Spanning tree	STP, RSTP, MSTP	STP, RSTP, MSTP	STP, RSTP, MSTP	STP, RSTP, MSTP	-
Multicast (IGMP)	v1, v2, v3	v1, v2, v3	v1, v2, v3	v1, v2, v3	v1, v2
SNMP	v1, v2c, v3	v1, v2c, v3	v1, v2c, v3	v1, v2c, v3	-
Jumbo frames	10KB	10KB	9KB	9KB	9KB
Fan	Smart fans	Smart fans	Smart fans	Smart fans	Smart fans
Rackmount	✓	✓	✓	✓	✓
Warranty	Lifetime*	Lifetime*	Lifetime*	Lifetime*	Lifetime*

*See warranty policy at TRENDnet.com

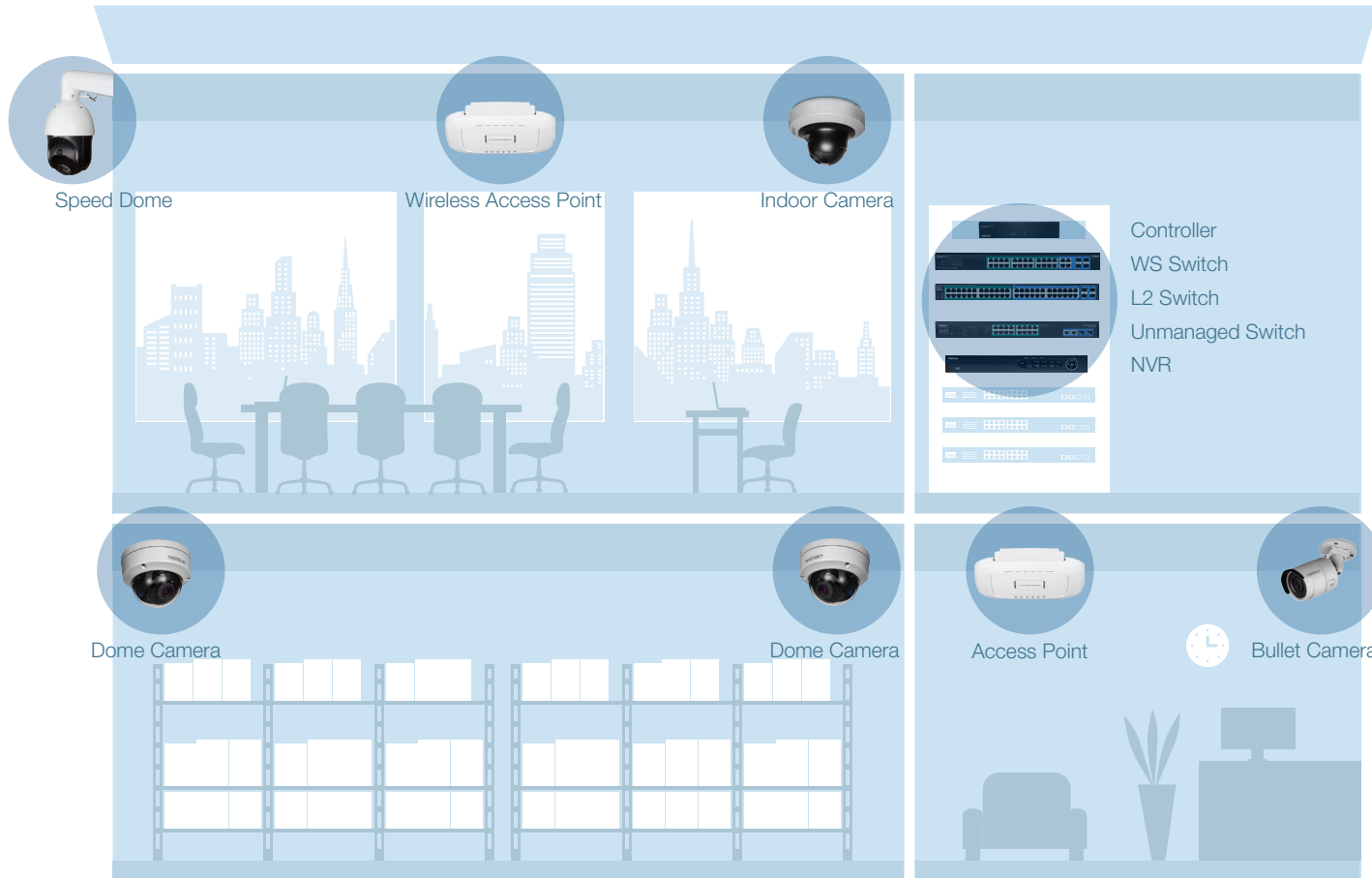


	10G Network Adapters	
	TEG-10GECTX	TEG-10GECSSFP
Ports	1 x 10G BASE-T	1 x 10G SFP+
Speed	10/5/2.5/1Gbps, 100Mbps	10Gbps
Features	Includes standard and low-profile brackets	
Form connector	PCIe 2.0 x 4	PCIe 2.0 x 4
802.1Q VLAN	✓	✓
Jumbo frames support	16KB	16KB
OS compatibility	Windows®, Mac®, Linux®, VMware®, and Hyper-V®	
Warranty	3 year	3 year



	10G SFP+ Modules		
	TEG-10GBS10	TEG-10GBS40	TEG-10GBSR
Date rate	10 Gigabit	10 Gigabit	10 Gigabit
Fiber mode	Single	Single	Multi
Distance	10km (6.2 mi.)	40km (24.9 mi.)	550m (1804 ft.)
Digital Diagnostics Monitoring (DDM) support	✓	✓	✓
Wavelength	1310nm	1550nm	850nm
Warranty	3 year	3 year	3 year

PoE: Flexibility and Savings



Save on setup costs and installation time by delivering power and data over a single Ethernet cable to PoE devices such as IP cameras and access points. In addition to reduced cost and time, PoE has several other benefits including flexibility for remote installations, network scalability, and managed controls. PoE delivers 15.4 watts of power per port; PoE+ delivers 30 watts; and UPoE delivers up to 60 watts of power per port.

See more PoE switches in the Multi-Gigabit and Industrial sections; see PoE access points in the SMB Wireless section; and see PoE cameras in the Surveillance section.

Français:

Economisez sur les coûts d'installation et sur le temps d'installation en fournissant l'alimentation et les données sur un seul câble Ethernet aux dispositifs PoE tels que les caméras IP et les points d'accès. Outre la réduction des coûts et du temps, le PoE offre plusieurs autres avantages, dont la souplesse pour les installations à distance, l'évolutivité du réseau et les contrôles gérés.

Deutsch:

Sparen Sie Einrichtungskosten und Installationszeit, indem Sie Strom und Daten über ein einziges Ethernet-Kabel an PoE-Geräte wie IP-Kameras und Access Points liefern. Zusätzlich zu Kosten- und Zeitersparnis bietet PoE eine Reihe weiterer Vorteile, darunter Flexibilität für Remote-Installationen, Netzwerk-Skalierbarkeit und verwaltete Steuerungen.

Português:

Economize nos custos e no tempo de instalação fornecendo energia e dados através de um único cabo Ethernet para dispositivos PoE, como câmeras IP e pontos de acesso. Além de reduzir custos e tempo, o PoE tem vários outros benefícios, incluindo flexibilidade para instalações remotas, escalabilidade de rede e controles gerenciados.

Español:

Ahorre gastos y tiempo de instalación suministrando alimentación y datos mediante un solo cable Ethernet a dispositivos PoE como cámaras IP y puntos de acceso. Además de ahorrar gastos y tiempo, la tecnología PoE ofrece otras ventajas, como flexibilidad para instalaciones remotas, escalabilidad de red y controles administrados.

PoE Managed Switches



	L2 Managed PoE/PoE+		Web Smart Gigabit PoE+						
	TL2-PG484	TL2-PG284	TPE-2840WS	TPE-1620WS	TPE-5048WS	TPE-5028WS	TPE-5240WS	TPE-082WS	TPE-1020WS
Ports	24 x Gigabit PoE+, 20 x gigabit, 4 x shared gigabit (RJ-45/SFP), 1 x console	4 x Gigabit PoE+, 20 x gigabit PoE, 4 x SFP, 1 x console	24 x Gigabit PoE+, 4 x shared gigabit (RJ-45/SFP)	16 x Gigabit PoE+, 4 x shared gigabit (RJ-45/SFP)	48 x Gigabit PoE+, 4 x shared gigabit (RJ-45/SFP)	24 x Gigabit PoE+, 4 x shared gigabit (RJ-45/SFP)	48 x Gigabit PoE+, 4 x shared gigabit (RJ-45/SFP)	8 x Gigabit PoE+, 2 x SFP	8 x Gigabit PoE+, 2 x shared gigabit (RJ-45/SFP)
PoE budget	370W	185W	185W	185W	740W	370W	370W	75W	75W
Max. power per port	30W	30W	30W	30W	30W	30W	30W	30W	30W
Switching fabric	96Gbps	56Gbps	56Gbps	40Gbps	104Gbps	56Gbps	104Gbps	20Gbps	20Gbps
RAM buffer	1MB	1MB	512KB	512KB	1.5MB	512KB	1.5MB	512KB	1MB
Forwarding rate	71.4Mpps	41.7Mpps	41.7Mpps	29.9Mpps	77.4Mpps	41.7Mpps	77.4Mpps	14.9Mpps	14.9Mpps
MAC address table	16K	16K	8K	8K	16K	8K	16K	8K	16K
VLAN	Asymmetric, port-based, 802.1Q, private, voice, GVRP, mac-based, protocol-based		Asymmetric, port-based, 802.1Q, private, voice, GVRP						
ACL	L2, L3, L4	L2, L3, L4	IPv4 L2-L4 & IPv6	IPv4 L2-L4 & IPv6	IPv4 L2-L4 & IPv6	IPv4 L2-L4 & IPv6	IPv4 L2-L4 & IPv6	IPv4 L2-L4 & IPv6	IPv4 L2-L4 & IPv6
IPv6	✓	✓	✓	✓	✓	✓	✓	✓	✓
DoS prevention	✓	✓	✓	✓	✓	✓	✓	✓	✓
802.1ab LLDP	✓	✓	✓	✓	✓	✓	✓	✓	✓
802.1X	✓	✓	✓	✓	✓	✓	✓	✓	✓
Spanning tree	STP, RSTP, MSTP	STP, RSTP, MSTP	STP, RSTP, MSTP	STP, RSTP, MSTP	STP, RSTP, MSTP	STP, RSTP, MSTP	STP, RSTP, MSTP	STP, RSTP, MSTP	STP, RSTP, MSTP
Multicast (IGMP)	v1, v2, v3	v1, v2, v3	v1, v2, v3	v1, v2, v3	v1, v2, v3	v1, v2, v3	v1, v2, v3	v1, v2, v3	v1, v2, v3
SNMP	v1, v2c, v3	v1, v2c, v3	v1, v2c, v3	v1, v2c, v3	v1, v2c, v3	v1, v2c, v3	v1, v2c, v3	v1, v2c, v3	v1, v2c, v3
Port based link aggregation	✓	✓	✓	✓	✓	✓	✓	✓	✓
Rackmount	✓	✓	✓	✓	✓	✓	✓	✓	✓
Fan	Smart fans	Smart fans	Smart fans	Smart fans	Smart fans	Smart fans	Smart fans	Fanless	Fanless
Warranty	Lifetime*	Lifetime*	Lifetime*	Lifetime*	Lifetime*	Lifetime*	Lifetime*	Lifetime*	Lifetime*

*See warranty policy at TRENDnet.com

PoE Managed Switches



	Web Smart Gigabit UPoE	Web Smart 10/100 PoE/PoE+	EdgeSmart Gigabit PoE/PoE+			EdgeSmart PoE Powered
	TPE-204US	TPE-224WS	TPE-TG44ES	TPE-TG50ES	TPE-TG82ES	TPE-P521ES
Ports	8 x Gigabit UPoE, 8 x gigabit PoE+, 4 x shared gigabit (RJ-45/SFP)	4 x 10/100Mbps PoE+, 20 x 10/100Mbps PoE, 2 x gigabit, 2 x shared gigabit (RJ-45/SFP)	4 x Gigabit PoE+, 4 x gigabit	4 x Gigabit PoE+, 1 x gigabit	8 x Gigabit PoE+	1 x Gigabit PoE+ in, 2 x gigabit PoE out, 2 x gigabit
PoE budget	370W	193W	60W	31W	64W	18W (PoE+ in), 8W (PoE in)
Max. power per port	30W / 60W	30W	30W	30W	30W	18W
Switching fabric	40Gbps	12.8Gbps	16Gbps	10Gbps	16Gbps	10Gbps
RAM buffer	512KB	512KB	192KB	125KB	192KB	512KB
Forwarding rate	29.8Mpps	9.5Mpps	11.9Mpps	7.44Mpps	11.9Mpps	7.4Mpps
MAC address table	8K	8K	4K	2K	4K	2K
VLAN	Asymmetric, port-based, 802.1Q, private, voice, GVRP		Port-based, 802.1Q	Asymmetric, port-based, 802.1Q, private, voice		Asymmetric, port-based, 802.1Q, private, voice
ACL	IPv4 L2-L4 & IPv6	IPv4 L2-L4 & IPv6	-	-	-	-
IPv6	✓	✓	-	-	-	-
DoS prevention	✓	✓	-	-	-	-
802.1ab LLDP	✓	✓	-	-	-	-
802.1X	✓	✓	-	-	-	-
Spanning tree	STP, RSTP, MSTP	STP, RSTP, MSTP	-	STP, RSTP	STP, RSTP	STP, RSTP
Multicast (IGMP)	v1, v2, v3	v1, v2, v3	v1, v2, v3	v1, v2, v3	v1, v2, v3	v1, v2, v3
SNMP	v1, v2c, v3	v1, v2c, v3	-	v1, v2c	v1, v2c	v1, v2c
Port based link aggregation	✓	✓	✓	✓	✓	✓
Rackmount	✓	✓	-	-	-	-
Fan	Smart fans	Smart fans	Fanless	Fanless	Fanless	Fanless
Warranty	Lifetime*	Lifetime*	Lifetime*	Lifetime*	Lifetime*	Lifetime*



Injectors		Splitters	Extenders	
TPE-117GI	TPE-115GI	TPE-104GS	TPE-E100	TPE-E110
Gigabit Ultra PoE Injector	Gigabit PoE+ Injector	Gigabit PoE Splitter	Gigabit PoE+ Extender	Gigabit PoE+ Extender / Amplifier
Converts a network data signal into a PoE Ethernet connection		Splits a PoE signal into separate data and power sources	Extends a PoE network connection for up to 100m (328 ft.) without the use of a power adapter	

PoE Unmanaged Switches



	Gigabit PoE+							Long Range PoE	
	TPE-TG240g	TPE-TG160g	TPE-TG81g	TPE-TG80g	TPE-TG44g	TPE-TG50g	TPE-TG82g	TPE-LG50	TPE-LG80
Ports	24 x Gigabit PoE+	16 x Gigabit PoE+	8 x Gigabit PoE+	8 x Gigabit PoE+	4 x Gigabit PoE+, 4 x gigabit	4 x Gigabit PoE+, 1 x gigabit	8 x Gigabit PoE+	4 x Gigabit PoE+, 1 x gigabit	8 x Gigabit PoE+
PoE budget	370W	246W	110W	123W	61.6W	31W	61W	32W	65W
Max. power per port	30W	30W	30W	30W	30W	30W	30W	30W	30W
Switching fabric	48Gbps	32Gbps	16Gbps	16Gbps	16Gbps	10Gbps	16Gbps	10Gbps	16Gbps
RAM buffer	512KB	512KB	192KB	192KB	128KB	1MB	128KB	128KB	192KB
MAC address table	8K	8K	4K	9K	8K	8K	8K	2K	4K
Rackmount	✓	✓	✓	-	-	-	-	-	-
Power adapter	Internal	Internal	Internal	External	External	External	External	External	External
Warranty	Lifetime*	Lifetime*	Lifetime*	Lifetime*	Lifetime*	Lifetime*	Lifetime*	Lifetime*	Lifetime*



	NVR Series: Gigabit PoE+		10/100 PoE+			10/100 PoE	
	TPE-3018L	TPE-3012L	TPE-T160	TPE-T80	TPE-T80H	TPE-S44	TPE-S50
Ports	16 x Gigabit PoE+, 2 x shared gigabit	8 x Gigabit PoE+, 2 x gigabit, 2 x SFP	16 x 10/100Mbps PoE+	8 x 10/100Mbps PoE+	8 x 10/100Mbps PoE+	4 x 10/100Mbps PoE, 4 x 10/100Mbps	4 x 10/100Mbps PoE+, 2 x 10/100Mbps
PoE budget	220W	120W	480W	240W	110W	30W	60W
Max. power per port	30W	30W	30W	30W	30W	15.4W	30W
Switching fabric	36Gbps	20Gbps	3.2Gbps	1.6Gbps	1.6Gbps	1.6Gbps	1.2Gbps
RAM buffer	512KB	512KB	192KB	156KB	56KB	96KB	96KB
MAC address table	8K	8K	4K	4K	1K	2K	2K
Rackmount	✓	✓	✓	✓	✓	-	-
Power adapter	Internal	Internal	Internal	Internal	Internal	External	Internal
Warranty	Lifetime*	Lifetime*	Lifetime*	Lifetime*	Lifetime*	Lifetime*	Lifetime*

*See warranty policy at TRENDnet.com

Rugged Industrial Solutions



TRENDnet industrial switch and fiber solutions provide dependable and hardened networking hardware for your industrial environments. With an enclosure rating of IP30/IP40, TRENDnet's industrial networking hardware is designed to withstand a high degree of vibration and shock, and extreme heat or cold.



Sample NEMA box application

Industrial switches are often used with NEMA electrical enclosures.

NEMA boxes not available through TRENDnet

Français:

Les solutions de switches industriels et de fibres TRENDnet fournissent un matériel réseau fiable et renforcé à vos environnements industriels. Avec un indice de protection IP30/IP40, le matériel de mise réseau industriel de TRENDnet est conçu pour résister à un degré élevé de vibrations et de chocs, ainsi qu'à la chaleur ou au froid extrême.

Deutsch:

Industrielle Switch- und Glasfaserlösungen von TRENDnet bieten zuverlässige und robuste Netzwerkhardware für Ihre industrielle Umgebung. Mit einer Gehäuseschutzklasse von IP30/IP40 ist die industrielle Netzwerkhardware von TRENDnet so ausgelegt, dass sie einem hohen Grad an Vibration und Schock sowie extremer Hitze oder Kälte standhält.

Português:

As soluções de fibra e switches industriais da TRENDnet fornecem um hardware de rede robusto e confiável para seus ambientes industriais. Com uma classificação de gabinete IP30/IP40, o hardware de rede industrial da TRENDnet foi projetado para suportar um alto grau de vibração, choque e calor ou frio extremos.

Español:

Las soluciones de switches industriales y de fibra de TRENDnet ofrecen un hardware de red confiable y robusto para entornos industriales. Con su carcasa con calificación IP30/IP40, el hardware de red industrial de TRENDnet está concebido para resistir un alto grado de vibraciones y golpes, así como un calor y un frío extremos.

Industrial Solutions



	Industrial L2 Managed PoE+		Industrial Web Smart	
	TI-PG541i	TI-PG1284i	TI-G160WS	TI-PG102WS
Ports	4 x Gigabit PoE+, 1 x gigabit, 1 x SFP	8 x Gigabit PoE+, 4 x gigabit SFP, 1 x console	16 x Gigabit	8 x Gigabit PoE+, 2 x gigabit SFP
PoE budget	120W	240W	-	240W @ 48V input / 124W @ 24V input
Max. power per port	30W	30W	-	30W
Switching fabric	12Gbps	24Gbps	32Gbps	20Gbps
RAM buffer	128MB	128MB	128MB	128MB
Forwarding rate	8.93Mpps	17.86Mpps	23.8Mpps	14.8Mpps
MAC address table	8K	16K	8K	8K
VLAN	Port-based, 802.1Q, mac-based, port isolation	802.1Q, port-based, mac-based, Q-in-Q VLAN, port isolation	Port-based, 802.1Q, mac-based, port isolation	
ACL	L2, L3, L4	L2, L3, L4	L2, L3, L4	L2, L3, L4
IPv6	-	IPv6 static IP address, DHCPv6 client	-	-
802.1ab LLDP	✓	✓	✓	✓
802.1X	-	✓	✓	✓
Spanning tree	-	STP, RSTP, MSTP	STP, RSTP	STP, RSTP
Multicast (IGMP)	v1, v2, v3	v1, v2, v3	v1, v2, v3	v1, v2, v3
SNMP	v1, v2c	v1, v2c, 3	v1, v2c, v3	v1, v2c, v3
Port based link aggregation	-	✓	✓	-
Temperature	-40° – 75° C (-40° – 167° F)	-40° – 75° C (-40° – 167° F)	-40° – 75° C (-40° – 167° F)	-40° – 75° C (-40° – 167° F)
Housing	IP30	IP30	IP30	IP30
Rackmount	DIN-Rail	DIN-Rail	DIN-Rail	Wall / DIN-Rail
Power supply	Power supply required (48VDC3000 / TI-S24048 / TI-S12048)	Power supply required (TI-S24048)	Power supply required (TI-S12048)	Power supply required (TI-S24048)
Warranty	Lifetime*	Lifetime*	Lifetime*	Lifetime*



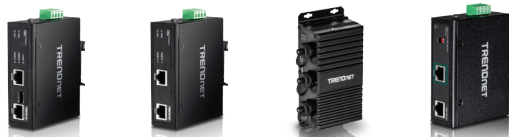
	Industrial SFP Modules		
	TI-MGBSX	TI-MGBS10	TI-MGBS40
Fiber mode	Multi	Single (10km)	Single (40km)
Warranty	3 year	3 year	3 year

*See warranty policy at TRENDnet.com

Industrial Solutions



	UPoE	Industrial Gigabit PoE+ Switches				Variable Voltage	Industrial Gigabit Switches			
	TI-UPG62	TI-PG102	TI-PG80	TI-PG62	TI-PG541	TI-PG62B	TI-G102	TI-G80	TI-G62	TI-G50
Ports	4 x Gigabit UPoE, 2 x SFP	8 x Gigabit PoE+, 2 x shared gigabit (RJ-45/SFP)	8 x Gigabit PoE+	4 x Gigabit PoE+, 1 x SFP, 1 x shared gigabit (RJ-45/SFP)	4 x Gigabit PoE+, 1 x gigabit, 1 x SFP	4 x Gigabit PoE+, 2 x SFP	8 x Gigabit, 2 x shared gigabit (RJ-45/SFP)	8 x Gigabit	4 x Gigabit, 1 x SFP, 1 x shared gigabit (RJ-45/SFP)	5 x Gigabit
PoE budget	240W	240W	200W	120W	120W	60 – 120W	-	-	-	-
Max. power per port	60W	30W	30W	30W	30W	30W	-	-	-	-
Switching fabric	12Gbps	20Gbps	16Gbps	12Gbps	12Gbps	12Gbps	20Gbps	16Gbps	12Gbps	10Gbps
RAM buffer	1MB	2MB	1MB	1MB	512KB	1MB	2MB	1MB	1MB	1MB
MAC address table	1K	16K	8K	1K	8K	1K	16K	8K	2K	8K
Temperature	-40° – 75° C (-40° – 167° F)		-40° – 75° C (-40° – 167° F)		-40° – 75° C (-40° – 167° F)		-40° – 75° C (-40° – 167° F)		-40° – 75° C (-40° – 167° F)	
Housing	IP30	IP30	IP30	IP30	IP30	IP30	IP30	IP30	IP30	IP30
Rackmount	Wall / DIN-Rail	Wall / DIN-Rail	Wall / DIN-Rail	Wall / DIN-Rail	DIN-Rail	Wall / DIN-Rail	Wall / DIN-Rail	Wall / DIN-Rail	Wall / DIN-Rail	Wall / DIN-Rail
Power supply	Power adapter required (TI-S24048)	Power adapter required (48VDC3000 or TI-S24048)	Power adapter required (TI-S24048)	Power adapter required (48VDC3000 or TI-S12048 or TI-S24048)		Power adapter required (TI-S12048 or TI-S24048)	Power adapter required (TI-M6024)			
Warranty	Lifetime*	Lifetime*	Lifetime*	Lifetime*	Lifetime*	Lifetime*	Lifetime*	Lifetime*	Lifetime*	Lifetime*



Industrial Gigabit PoE Injector / Extender / Splitter

	TI-IG60	TI-IG30	TI-EU120	TI-SG104
Description	UPoE Injector	PoE+ Injector	2-Port Outdoor UPoE Extender	UPoE Splitter
PoE budget	60W	30W	64W	-
Temperature	-40° – 75° C (-40° – 167° F)	-40° – 75° C (-40° – 167° F)	-40° – 75° C (-40° – 167° F)	-40° – 80° C (-40° – 185° F)
Housing	IP30	IP30	IP67	IP30
Rackmount	Wall / DIN-Rail	Wall / DIN-Rail	Wall	Wall / DIN-Rail
Power supply	Power supply required (TI-S12048)		PD power input: 30W/60W/95W	DC output: 12V, 16V, 24V, 48V
Warranty	3 year	3 year	3 year	3 year



Industrial Gigabit Fiber Converters

	TI-UF11SFP	TI-PF11SFP	TI-F11SFP	Industrial 100Mbps Fiber Converters	
Description	SFP to gigabit UPoE	SFP to gigabit PoE+	100/1000BASE-T to SFP	TI-F10S30	TI-F10SC
Fiber mode	Based on SFP	Based on SFP	Based on SFP	100BASE-FX Single-Mode SC	100BASE-FX Multi-Mode SC
Fiber converter	SFP	SFP	SFP	Duplex SC	Duplex SC
PoE budget	60W	30W	-	-	-
Distance	Based on SFP	Based on SFP	Based on SFP	30km (18.6 mi.)	2km (1.2 mi.)
Temperature	-40° – 75° C (-40 – 167° F)			-40° – 75° C (-40° – 167° F)	
Housing	IP30	IP30	IP30	IP40	IP40
Wavelength	Based on SFP	Based on SFP	Based on SFP	1310nm	1310nm
Rackmount	Wall / DIN-Rail	Wall / DIN-Rail	Wall / DIN-Rail	Wall / DIN-Rail	Wall / DIN-Rail
Power supply	Power supply required (TI-S12048)			Power supply required (TI-M6024)	
Warranty	3 year	3 year	3 year	3 year	3 year

SMB Wireless Solutions

See more wireless solutions in the Routers and Adapters section.



Workplace connectivity is crucial for efficient and productive offices. TRENDnet's reliable SMB wireless solutions keep you connected to what's important.

Business Routers

Ensures optimal performance, scalability, and protection for your network. Features advanced content filtering with Router Limits™.

Hardware Controllers

Designed to simplify management and setup processes for up to 128 TRENDnet access points. Supports seamless WiFi roaming.

Indoor & Outdoor Access Points

Indoor APs to maximize WiFi coverage and minimize dead spots. Outdoor APs for surveillance systems and building-to-building connectivity.

Français:

La connectivité sur le lieu de travail est essentielle pour des bureaux efficaces et productifs. Les solutions WiFi fiables de TRENDnet pour les PME vous permettent de rester connecté à l'essentiel. La gamme WiFi PME avancée de TRENDnet comprend des routeurs professionnels, des contrôleurs matériels et des points d'accès intérieurs et extérieurs.

Deutsch:

Die Konnektivität am Arbeitsplatz ist für effiziente und produktive Büros unabdingbar. Mit den zuverlässigen SMB-Wireless-Lösungen von TRENDnet bleiben Sie in Verbindung mit dem, was wichtig ist. Das erweiterte SMB Wi-Fi-Portfolio von TRENDnet umfasst Business-Router, Hardware-Controller und Access Points für den Innen- und Außenbereich.

Português:

A conectividade no local de trabalho é crucial para escritórios eficientes e produtivos. As soluções sem fio SMB da TRENDnet são confiáveis e mantêm você conectado ao que é importante. O avançado portfólio SMB WiFi da TRENDnet inclui roteadores comerciais, controladores de hardware e pontos de acesso internos e externos.

Español:

La conectividad en el entorno de trabajo resulta crucial para lograr unas oficinas eficientes y productivas. Las soluciones wireless confiables para PyMES de TRENDnet le mantienen conectado a lo más importante. La serie de productos WiFi avanzados para PyMES de TRENDnet abarca routers empresariales, controladores de hardware, así como puntos de acceso interiores y exteriores.

SMB Networking



	PoE+ Wireless LAN Controller	Wireless LAN Controller
	TEW-WLC100P	TEW-WLC100
Features	Centralized AP management and seamless WiFi roaming, 60W PoE budget	Centralized AP management and seamless WiFi roaming
Ports	4 x Gigabit PoE+, 1 x gigabit, 1 x USB	5 x Gigabit, 1 x USB
Max. APs	Up to 128	
Seamless roaming	802.11k, 802.11r, OKC	
AP management	Bandwidth control, IP address settings, client blacklist, grouping, provisioning, batch upgrades, RSSI threshold, SSID encryption	
VLAN	802.1Q	
WLAN monitoring	AP, clients, statistics	
Hotspot	Customizable Captive Portal support	
Map view	WAP Maps™ provide visual overview	
Compatible APs	TEW-826DAP, TEW-825DAP, TEW-821DAP, TEW-755AP	
Warranty	3 year	3 year

	Business Routers	
	TEW-829DRU	TWG-431BR
Wireless rating	AC3000	-
Max. data rate / WiFi band	1733Mbps (5GHz1) + 867Mbps (5GHz2) + 400Mbps (2.4GHz)	-
Ports	8 x Gigabit LAN, 2 x gigabit WAN, 1 x USB 3.0, 1 x RJ-45 console	4 x Gigabit (3WAN + 1LAN OR 3LAN + 1WAN), 1 x USB 3.0, 1 x RJ-45 console
Features	Router Limits™, rack mountable, wall mountable	Multi-WAN, VPN router, rack mountable
VPN	PPTP / L2TP, L2TP with IPsec, IPsec, SSL VPN	PPTP / L2TP, L2TP with IPsec, IPsec, SSL VPN
Multi-WAN	Fail-over / load balancing / WAN protocol binding	Fail-over / load balancing
Access controls	Router Limits™, MAC / IP filter, DMZ / Port Forwarding / One-to-One NAT	MAC / IP filter, DMZ / Port Forwarding
Management	HTTP / HTTPS, Telnet / SSH, console	HTTP / HTTPS, Telnet / SSH, console
VLAN	802.1Q VLAN / Inter-VLAN routing; multiple SSID with VLAN tagging	802.1Q VLAN / Inter-VLAN routing
Scheduling	Auto power cycle, auto update, radios on / off	Auto power cycle, auto update, WoL
Warranty	3 year	3 year



	Wireless Controller Kits	
	TEW-821DAP2KAC	TEW-755AP2KAC
Access points	2 x AC1200 PoE APs (TEW-821DAP)	2 x N300 PoE APs (TEW-755AP)
Injectors	2 x PoE Injectors (TPE-113GI)	2 x PoE Injectors (TPE-113GI)
Controller	1 x TEW-WLC100	1 x TEW-WLC100
Warranty	3 year	3 year

PoE Access Points



	Outdoor			Indoor			
	TEW-841APB0	TEW-740APB0	TEW-740APB02K	TEW-826DAP	TEW-825DAP	TEW-821DAP	TEW-755AP
Features	Omni-directional, point-to-point, point-to-multi-point	Point-to-point / CPE	Preconfigured point-to-point bridge kit	Wireless Wave 2 AC2200	Wireless AC1750	Wireless Wave 2 AC1200	Wireless N300
Max. data rate / Wi-Fi band	867Mbps / 5GHz AC 400Mbps / 2.4GHz N	300Mbps / 2.4GHz N	300Mbps / 2.4GHz N	867Mbps / 5GHz AC1 867Mbps / 5GHz AC2 400Mbps / 2.4GHz N	1300Mbps / 5GHz AC 450Mbps / 2.4GHz N	867Mbps / 5GHz AC 400Mbps / 2.4GHz N	300Mbps / 2.4GHz N
Ports	1 x Gigabit PoE+	1 x 10/100Mbps Proprietary PoE, 1 x 10/100Mbps LAN2		1 x Gigabit PoE+, 1 x gigabit	1 x Gigabit PoE+	1 x Gigabit PoE	1 x Gigabit PoE
Antenna strength	4 x 5 dBi	10 dBi directional	10 dBi directional	2.4GHz: 2 x 5 dBi 5GHz1: 2 x 5 dBi 5GHz2: 2 x 5 dBi	2.4GHz: 3 x 4 dBi 5GHz: 3 x 4 dBi	2.4GHz: 2 x 3 dBi 5GHz: 2 x 4 dBi	2.4GHz: 2 x 4 dBi
Management utility	✓	✓	✓	✓	✓	✓	✓
Wireless Distribution System (WDS)	✓	✓	✓	✓	✓	✓	✓
Repeater mode	-	-	-	✓	✓	✓	✓
Client mode	Client Bridge	Client Bridge + AP, WISP (CPE) + AP		AP Client	AP Client	AP Client	AP Client
Additional SSIDs	32 (16 per band)	7	7	24 (8 per band)	16 (8 per band)	16 (8 per band)	8
Max. encryption	WPA2	WPA2	WPA2	WPA3	WPA3	WPA3	WPA3
Mounting hardware	✓	✓	✓	✓	✓	✓	✓
Housing	IP67	IPX6	IPX6	IP30	IP30	IP30	IP30
Warranty	3 year	3 year	3 year	3 year	3 year	3 year	3 year

High-Definition Surveillance Solutions

TRENDNET

IP Cameras

TRENDnet's large surveillance camera portfolio allows you to choose the solutions ideally suited for your project(s). TRENDnet cameras are available with a wide range of options including 4K support, PoE, night vision, tamper resistance, and other advanced features.

Network Video Recorders

TRENDnet's HD NVR surveillance systems are comprehensive and cost-effective camera management solutions, allowing you to easily manage your entire surveillance network from a single interface. Navigate the intuitive interface to set live view preferences, recording schedules, and advanced playback options.

Français:

La gamme de caméras de surveillance TRENDnet vous permet de choisir les solutions idéales pour vos projets. Les systèmes de surveillance NVR HD de TRENDnet sont des solutions de gestion de caméras complètes et économiques, vous permettant de gérer facilement l'ensemble de votre réseau de surveillance à partir d'une seule interface.

Deutsch:

Mit dem Überwachungskamera-Portfolio von TRENDnet können Sie die für Ihre Projekte optimal geeigneten Lösungen auszuwählen. Die HD-NVR-Überwachungssysteme von TRENDnet sind umfassende und kostengünstige Kameramanagement-Lösungen, mit denen Sie Ihr gesamtes Überwachungsnetzwerk einfach über eine einzige Schnittstelle verwalten können.

Português:

O portfólio de câmeras de vigilância da TRENDnet permite que você escolha as soluções ideais para seus projetos. Os sistemas de vigilância HD NVR da TRENDnet são soluções de gerenciamento de câmera abrangentes e econômicas, permitindo que você gerencie facilmente toda a sua rede de vigilância a partir de uma única interface.

Español:

La gama de cámaras de vigilancia de TRENDnet le permite seleccionar las soluciones más idóneas para sus proyectos. Los sistemas de vigilancia HD NVR de TRENDnet son soluciones de administración de cámaras integrales y económicas que le permiten administrar con facilidad toda su red de vigilancia desde una sola interfaz.

PoE Surveillance Cameras



	Speed Dome	Motorized Dome	Multi-Lens PTZ	Fixed Turret	Fixed Dome
	TV-IP440PI	TV-IP420P	TV-IP460PI	TV-IP323PI	TV-IP410PI
Features	2MP HD PTZ w/ night vision	3MP HD motorized lens	8MP HD H.265 Multi-Sensor w/ night vision	4MP HD H.265 fixed turret w/ night vision	Indoor 2MP HD w/ night vision
Connectivity	PoE+	PoE	PoE+	PoE	PoE
Free app	Apple® / Android™				
Free software	Manage up to 32 TRENDnet cameras				
Housing	IP66	IP66	IP67	IP67	Indoor
Compression	H.264, MJPEG	H.264, MJPEG	H.265+, H.265, H.264+, H.264, MJPEG	H.265+, H.265, H.264+, H.264, MJPEG	H.264+, H.264, MJPEG
Max. resolution	1920 x 1080	2048 x 1536	1920 x 1080	2560 x 1440	1920 x 1080
Image sensor	1/2.8" Progressive Scan CMOS	1/2.8" Progressive Scan CMOS	Four 1/2.8" Progressive Scan CMOS	1/3" Progressive Scan CMOS	1/2.8" CMOS
Lens	4.7 – 94mm @ F1.6 – 3.5	2.8 – 12mm @ F1.6 – F2.7	PTZ: 2.8 – 12mm @ F2.0 – 2.4 Fixed lens: 2mm @ F2.0	4mm @ F1.6	2.8mm @ F2.0
Viewing angle	58.3 – 3.2° (wide-tele)	105 – 33.5° (wide-tele)	PTZ: 120 – 56.6° (wide-tele) Fixed lens: 128.5°	78°	109.4°
Zoom	20x Optical, 16x digital, auto-focus	4x Optical, 16x digital, auto-focus	4x Optical, 8x digital	4x Digital	User-defined zoom window
Audio support	Two-way audio (audio line in/line out)	Two-way audio (audio line in / line out)	Two-way audio (audio line in/line out)	-	-
Vision	Night vision up to 100m	0.01 lux	Night vision up to 10m radius	Night vision up to 30m	Night vision up to 10m
Pan & tilt	Endless 360°	Motorized lens: Pan 350° and tilt 90°	Motorized lens: Pan 350° and tilt: 90°	3-axis manually adjustable mount	Motorized lens: Pan 180° and tilt 75°
Network	IPv4, IPv6	IPv4 / IPv6	IPv4, IPv6	IPv4, IPv6	IPv4 / IPv6
ONVIF	v2.2	v2.2	✓	Profile S, Profile G	v2.2
Power consumption	20W max.	8W max.	24W max.	6W max.	9W max.
Micro SD slot	✓ (up to 128GB)	✓ (up to 128GB)	✓ (up to 256GB)	✓ (up to 128GB)	✓ (up to 128GB)
Operating temp.	-30° – 65° C (-22° – 149° F)	-30° – 65° C (-22° – 149° F)	-10° – 50° C (14° – 122° F)	-30° – 60° C (-22° – 140° F)	-10° – 40° C (-14° – 104° F)
Hardware	Mounting bracket required (TV-HC400, TV-HP400, TV-HW400, TV-HN400)	Optional: TV-WL300	Mounting hardware included	Mounting hardware included	Mounting hardware included
Warranty	3 year	3 year	3 year	3 year	3 year

PoE Surveillance Cameras



	Fixed Dome				Fixed Dome Varifocal Lens	
	TV-IP319PI	TV-IP317PI	TV-IP315PI	TV-IP327PI	TV-IP345PI	TV-IP341PI
Features	8MP 4K UHD H.265 WDR w/ night vision	5MP HD H.265 WDR w/ night vision	4MP HD H.265 WDR w/ night vision	2MP HD H.265 WDR w/ night vision	4MP HD varifocal H.265 WDR w/ night vision	2MP HD varifocal w/ night vision
Connectivity	PoE	PoE	PoE	PoE	PoE	PoE
Free app	Apple® / Android™					
Free software	Manage up to 32 TRENDnet cameras					
Housing	IP67	IP67	IP66	IP67	IP67	IP66
Compression	H.265+, H.265, H.264+, H.264, MJPEG					H.264, MJPEG
Max. resolution	3840 x 2160	2944 x 1656	2688 x 1520	1920 x 1080	2560 x 1440	1920 x 1080
Image sensor	1/2.5" CMOS	1/2.9" CMOS	1/3" CMOS	1/2.8" CMOS	1/3" CMOS	1/3" CMOS
Lens	2.8mm @ F1.2	2.8mm @ F1.2	4mm @ F2.0	4mm @ F1.2	2.8 – 12mm @ F1.6	2.8 – 12mm @ F1.4
Viewing angle	102°	80°	83°	86°	98 – 28° (wide-tele)	113 – 33.8° (wide-tele)
Zoom	4x Digital	4x Digital	4x Digital	4x Digital	4.2x Optical, 4x digital	4x Digital
Audio support	-	-	-	-	-	Two-way audio (audio line in / line out)
Night vision	Up to 30m (98 ft.)	Up to 30m (98 ft.)	Up to 30m (98 ft.)	Up to 30m (98 ft.)	Up to 30m (98 ft.)	Up to 30m (98 ft.)
Pan & tilt	Fixed position: Manually pan 355° and tilt 75°	Fixed position: Manually pan 355° and tilt 75°	Fixed position: Manually pan 180° and tilt 75°	Fixed position: Manually pan 355° and tilt 75°	Fixed position: Manually pan 360° and tilt 90°	Fixed position: Manually pan 355° and tilt 75°
Network	IPv4, IPv6	IPv4, IPv6	IPv4 / IPv6	IPv4, IPv6	IPv4 / IPv6	IPv4 / IPv6
ONVIF	Profile S, Profile G	Profile S, Profile G	Profile S, Profile G	Profile S, Profile G	Profile S, Profile G	Profile S, Profile G
Power consumption	9W max.	9W max.	5W max.	9W max.	12.9W max.	5.5W max.
Micro SD slot	✓ (up to 128GB)	✓ (up to 128GB)	✓ (up to 128GB)	✓ (up to 128GB)	✓ (up to 128GB)	✓ (up to 64GB)
Operating temp.	-30° – 60° C (-22° – 140° F)	-30° – 60° C (-22° – 140° F)	-30° – 60° C (-22° – 140° F)	-30° – 60° C (-22° – 140° F)	-30° – 60° C (-22° – 140° F)	-30° – 60° C (-22° – 140° F)
Hardware	Optional: TV-WS300	Optional: TV-WS300	Optional: TV-WS300	Optional: TV-WS300	Mounting hardware included	Mounting hardware included
Warranty	3 year	3 year	3 year	3 year	3 year	3 year

PoE Surveillance Cameras



	Bullet					Bullet Varifocal Lens	
	TV-IP318PI	TV-IP313PI	TV-IP316PI	TV-IP314PI	TV-IP326PI	TV-IP344PI	TV-IP340PI
Features	8MP 4K UHD H.265 WDR w/ night vision	5MP HD H.265 WDR w/ enhanced night vision	5MP HD H.265 WDR w/ night vision	4MP HD H.265 WDR w/ night vision	2MP H.265 WDR w/ night vision	4MP HD varifocal H.265 WDR w/ night vision	2MP HD varifocal w/ night vision
Connectivity	PoE	PoE	PoE	PoE	PoE	PoE	PoE
Free app	Apple® / Android™						
Free software	Manage up to 32 TRENDnet cameras						
Housing	IP67	IP67	IP67	IP66	IP67	IP67	IP66
Compression	H.265+, H.265, H.264+, H.264, MJPEG			H.265+, H.265, H.264+, H.264, MJPEG			H.264, MJPEG
Max. resolution	3840 x 2160	2944 x 1656	2944 x 1656	2688 x 1520	1920 x 1080	2560 x 1440	1920 x 1080
Image sensor	1/2.5" CMOS	1/2.9" CMOS	1/2.9" CMOS	1/3" CMOS	1/2.8" CMOS	1/3" Progressive scan CMOS	1/3" CMOS
Lens	2.8mm @ F1.2	4mm @ F1.2	2.8mm @ F1.2	4mm @ F 2.0	4mm @ F1.2	2.8 – 12mm @ F1.6	2.8 – 12mm @ F1.4
Viewing angle	102°	63.5°	81°	83°	86°	115 – 32°	113 – 33.8° (wide-tele)
Zoom	4x Digital	4x Digital	4x Digital	4x Digital	4x Digital	4.2x Optical, 4x digital, auto-focus	4x Digital
Audio support	-	-	-	-	-	-	Two-way audio (audio line in / line out)
Night vision	Up to 30m (98 ft.)	Up to 80m (262 ft.)	Up to 30m (98 ft.)	Up to 30m (98 ft.)	Up to 30m (98 ft.)	Up to 30m (98 ft.)	Up to 30m (98 ft.)
Network	IPv4, IPv6	IPv4, IPv6	IPv4, IPv6	IPv4 / IPv6	IPv4, IPv6	IPv4 / IPv6	IPv4 / IPv6
ONVIF	Profile S, Profile G, PSIA, CGI, ISAPI			Profile S	Profile S, Profile G	Profile S, Profile G	v2.2
Power consumption	7.5W	12.5W	7W	5W max.	7.5W	12.9W max.	5.5W max.
Micro SD slot	✓ (up to 128GB)	✓ (up to 128GB)	✓ (up to 128GB)	✓ (up to 128GB)	✓ (up to 128GB)	✓ (up to 128GB)	✓ (up to 64GB)
Operating temp.	-30° – 60° C (-22° – 140° F)	-30° – 60° C (-22° – 140° F)	-30° – 60° C (-22° – 140° F)	-30° – 60° C (-22° – 140° F)	-30° – 60° C (-22° – 140° F)	-20° – 60° C (-4° – 140° F)	-30° – 60° C (-22° – 140° F)
Hardware	Mounting hardware included						
Warranty	3 year	3 year	3 year	3 year	3 year	3 year	3 year

Wireless & Cloud Cameras



	Wireless	Cloud	
	TV-IP322WI	TWC-L10	TWC-C20
Features	1.3MP HD WiFi w/ night vision	HD WiFi light bulb cam	Indoor 2MP HD pan & tilt
Connectivity	WiFi N or PoE	WiFi / cloud	Cloud
Free app	Apple® / Android™		
Free software	Manage up to 32 TRENDnet cameras		
Housing	IP66	Light Bulb / Indoor	Indoor
Compression	H.264, MJPEG	H.264	H.264
Max. resolution	1280 x 960	1280 x 720	1920x1080
Image sensor	1/3" CMOS	1/4" Progressive Scan CMOS	1/2.7" Progressive Scan CMOS
Lens	4mm @ F2.0	0.95mm @ F2.0	4mm @ F2.2
Viewing angle	Horizontal: 71.6°	185°	90°
Zoom	User-defined zoom window	1.8x Digital	4x Digital
Audio support	-	Built-in mic and speaker	Two-way audio (audio line in/line out)
Vision	Night vision up to 30m (98 ft.)	360 lumens, 40W	IR filter
Pan & tilt	-	-	Pan 340° and tilt 120°
Network	IPv4 / IPv6	IPv4, UDP, TCP	WiFi
Onvif	Profile S, Profile G	-	-
Power consumption	7W max.	9W max.	5.5W max.
Micro SD slot	✓ (up to 64GB)	✓ (up to 64 GB)	✓ (up to 128GB)
Operating temp.	-30° – 60° C (-22° – 140° F)	0° – 40° C (32° – 104° F)	-10° – 45° C (14° – 113° F)
Hardware	Mounting hardware included	Light bulb	-
Warranty	3 year	2 year	3 year

NVRs & DVRs



	H.265 4K NVRs		DVRs	
	TV-NVR416	TV-NVR408	TV-DVR208K	TV-DVR104K
Features	Advanced camera viewing, recording, and playback		Advanced camera viewing, recording, and playback	
Channels	16	8	8	4
PoE budget	150W	80W	-	-
Hard drive	2 x SATA up to 6TB each	2 x SATA up to 6TB each	1 x SATA I/II bay up to 6TB	1 x SATA I/II bay up to 6TB
Video interface	1 x HDMI, 1 x VGA	1 x HDMI, 1 x VGA	1 x HDMI, 1 x VGA	1 x HDMI, 1 x VGA
USB ports	2 x USB 2.0	2 x USB 2.0	2 x USB 2.0	2 x USB 2.0
Recording time*	Approx. one month of continuous 1080p HD recording	Over one month of continuous 1080p HD recording	Over 3 weeks of continuous 1080p recording	Over 4 weeks of continuous 1080p recording
Viewing modes	3 x 3, 1+7, 1+5, 2 x 2	3 x 3, 1+7, 1+5, 2 x 2	1 x 1, 2 x 2, 1+5, 1+7, 3 x 3	1 x 1, 2 x 2
PTZ support	✓	✓	-	-
Audio support	✓	✓	✓	✓
Web GUI interface	✓	✓	✓	✓
Export file type	H.265, H.264, MPEG4	H.265, H.264, MPEG4	H.264	H.264
Mobile app	✓	✓	✓	✓
Included HDDs	-	-	Includes 1TB HDD	Includes 1TB HDD
Included camera(s)	-	-	8 x Outdoor HD cameras	4 x Outdoor HD cameras
Compatible cameras	Compatible with TRENDnet and third-party PoE cameras		1080p HD, outdoor-ready cameras included	1080p HD, outdoor-ready cameras included
Rackmount	✓	✓	-	-
Warranty	2 year	2 year	2 year	2 year

*Based on maximum camera channels and maximum storage capacity.

Fiber Media Converters



	Intelligent Gigabit Multi-Mode			100Mbps Multi-Mode		
	TFC-1000MSC	TFC-1000MGB	TFC-1000MGA	TFC-110MST	TFC-110MSC	TFC-110MM
Description	Intelligent 1000BASE-T to 1000BASE-SX multi-mode SC	Intelligent 1000BASE-T to SFP	100/1000BASE-T to SFP	100BASE-TX to 100BASE-FX multi-mode ST	100BASE-TX to 100BASE-FX multi-mode SC	10/100BASE-TX to 100BASE-FX multi-mode with MT-RJ connector
Fiber mode	Multi	Single / Multi	Single / Multi	Multi	Multi	Multi
Fiber connector	Duplex SC	SFP	SFP	Duplex ST	Duplex SC	Duplex MT-RJ
Distance	550m (1800 ft.)	Based on SFP	Based on SFP	2km (1.2 mi.)	2km (1.2 mi.)	2km (1.2 mi.)
Wavelength	850nm	Based on SFP	Based on SFP	1300nm	1300nm	1300nm
TFC-1600 compatible	✓	✓	✓	✓	✓	✓
Standalone converter	✓	✓	✓	✓	✓	✓
LLR dip switch	✓	✓	✓	-	-	-
Duplex dip switch	✓	✓	✓	✓	✓	✓
Warranty	3 year	3 year	3 year	3 year	3 year	3 year

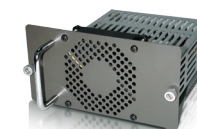
Intelligent WDM Single-Mode

Fiber modes: Single mode / Simplex SC
 Fiber connections: Gigabit / 100Mbps
 Distances: 60km (37.3 mi.), 40km (24.9 mi.), 20km (12.4 mi.), 10km (6.2 mi.)



Single-Mode

Fiber modes: Duplex SC
 Fiber connections: Gigabit / 100Mbps
 Distances: 70km (43.5 mi.), 60km (37.3 mi.), 50km (31 mi.), 30km (18.6 mi.), 20km (12.4 mi.), 15km (9.3 mi.)
 Wavelengths: 1550nm, 1310nm



Fiber Chassis

	TFC-1600	TFC-1600MM	TFC-1600RP
Features	TRENDnet's 16-Bay Fiber Chassis System provides housing for up to 16 TFC series media converters.	Supports management of media converters and power supplies installed in the TFC-1600. Provides instant access to cooling fan and power supply status; allows user to configure and monitor chassis.	Hot swappable 100-240 VAC redundant power supply. Built-in over voltage and short circuit protection. Power supply backup for TFC-1600.
Warranty	3 year	1 year	1 year

Fiber SFP Modules

See more Fiber solutions in the Multi-Gigabit and Industrial sections.



Multi-Mode

Interface: Duplex LC
 Distances: 2km (1.2 mi.), 550m (1,804 ft.)
 Speeds: 1.25Gbps, 155Mbps



WDM Single Mode

Interface: Simplex LC
 Distances: 80km (49.7 mi.), 40km (24.8 mi.), 20km (12.4 mi.), 10km (6.2 mi.)
 Speed: 1.25Gbps



Layer 2 Managed SFP Switch

TL2-FG142

Ports	14 x SFP, 2 x shared RJ-45 gigabit, 1 x RJ-45 Fast Ethernet management, 1 x RJ-45 console
Switching fabric	28Gbps
Ram buffer	1MB
Forwarding rate 64-byte	20.8Mpps
Mac address table	8K
VLAN	Asymmetric, port based, multiple management assignment, up to 256 VLAN groups, 802.1Q, dynamic GVRP, private, voice
ACL	ACL IPv4 L2-L4 & IPv6
Ipv6	✓
Dos prevention	✓
802.1ab lldp	✓
802.1x	✓
Dynamic gvrp	✓
LACP (802.3ad)	✓
Rmon	✓
CoS (802.1p)	✓
Spanning tree	STP, RSTP, MSTP
Multicast (IGMP)	v1, v2, v3
Snmp	v1, v2c, v3
Port based link aggregation	✓
Jumbo frame support	10 Kbytes
Fan	Fanless
Rackmount	✓
Warranty	Lifetime*



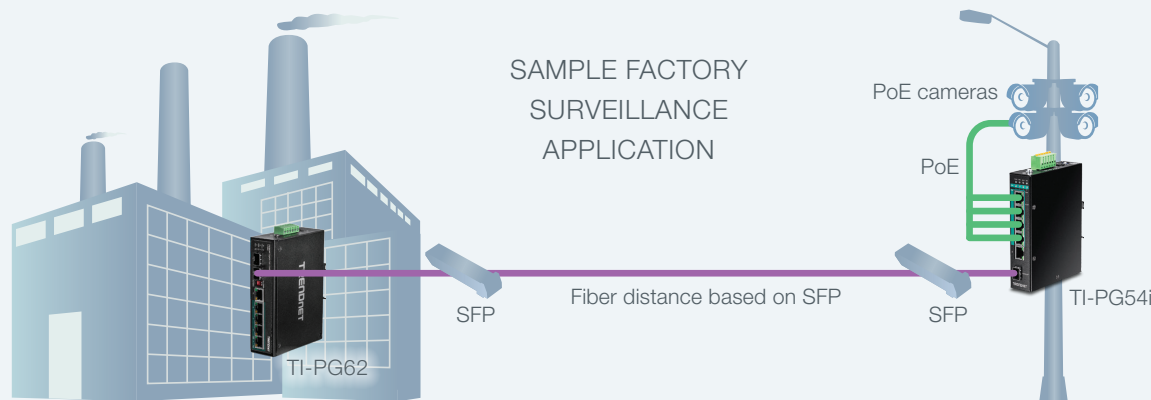
Copper

Interface: RJ-45
 Distance: 100m (328 ft.)
 Speed: 1.25Gbps



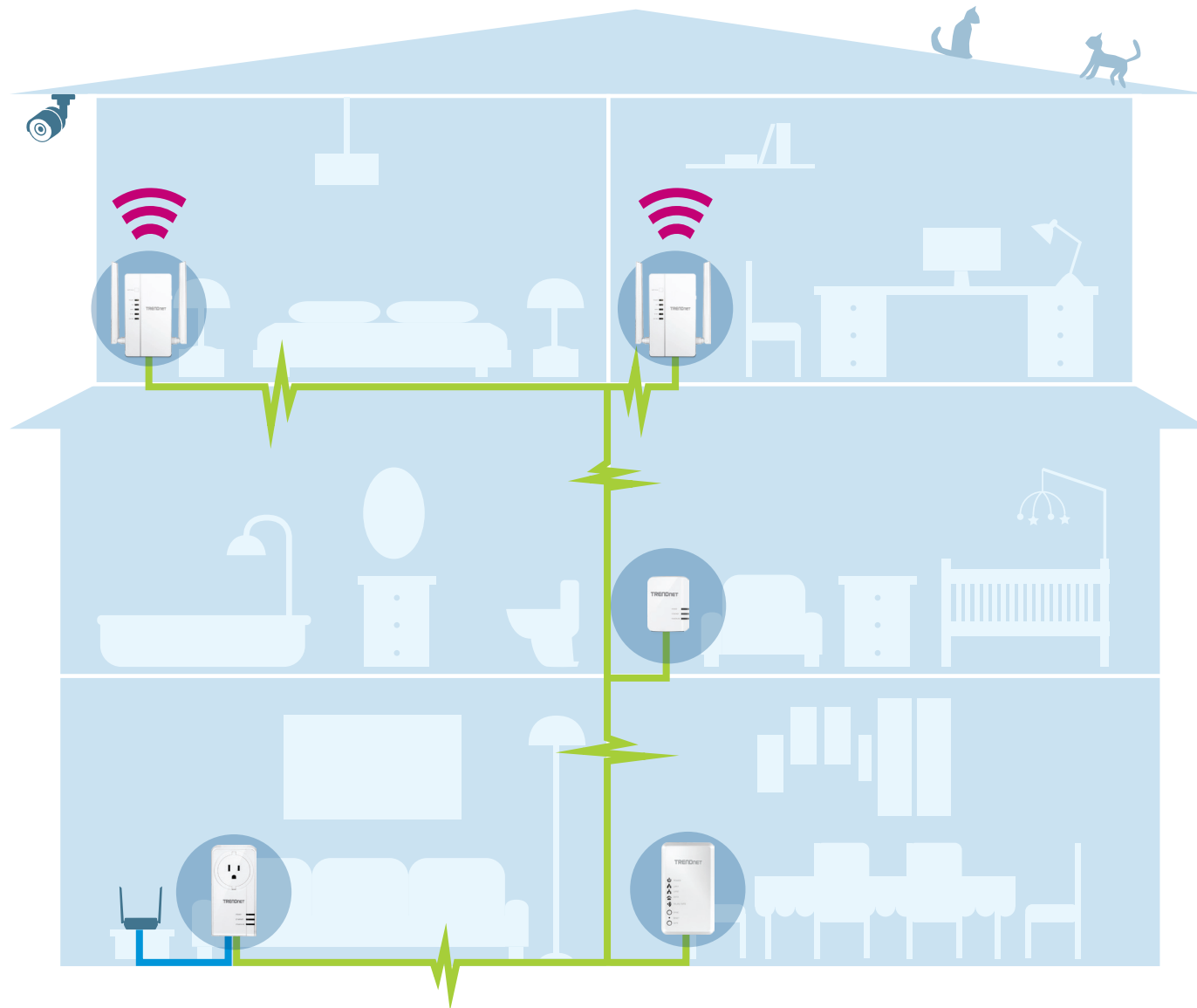
Single Mode

Interface: Duplex LC
 Distances: 80km (49.7 mi.), 40km (24.8 mi.), 20km (12.4 mi.), 10km (6.2 mi.)
 Speeds: 1.25Gbps, 155Mbps



*See warranty policy at TRENDnet.com

Powerline: Networking Over Electrical Lines



Powerline adapters can easily provide you with access to the internet from your existing power outlets. TRENDnet Powerline adapters utilize your existing electrical wiring to create or expand a wired network. TRENDnet's WiFi Everywhere™ Powerline solutions provide wireless connectivity through your power outlets with built-in access points in each adapter. These Powerline adapters are especially useful for brick and stone buildings where Wi-Fi signals have difficulty penetrating walls.

Français:

Les adaptateurs CPL vous permettent d'accéder facilement à Internet à partir de vos prises de courant existantes. Les adaptateurs CPL TRENDnet utilisent votre câblage électrique existant pour créer ou étendre un réseau câblé. Les solutions CPL WiFi Everywhere™ de TRENDnet fournissent une connectivité sans fil par l'intermédiaire de vos prises de courant avec des points d'accès intégrés à chaque adaptateur.

Deutsch:

Mit Powerline-Adaptern können Sie über Ihre vorhandenen Steckdosen auf das Internet zugreifen. TRENDnet Powerline Adapter nutzen Ihre vorhandene elektrische Verkabelung, um ein kabelgebundenes Netzwerk aufzubauen oder zu erweitern. Die Wi-Fi Everywhere™ Powerline-Lösungen von TRENDnet bieten Wireless-Konnektivität über Ihre Steckdosen mit integrierten Access Points in jedem Adapter.

Português:

Os adaptadores Powerline podem facilmente fornecer acesso à internet a partir de suas tomadas elétricas existentes. Os adaptadores Powerline da TRENDnet utilizam sua fiação elétrica existente para criar ou expandir uma rede com fio. As soluções WiFi Everywhere™ Powerline da TRENDnet fornecem conectividade sem fio através de suas tomadas elétricas com pontos de acesso integrados em cada adaptador.

Español:

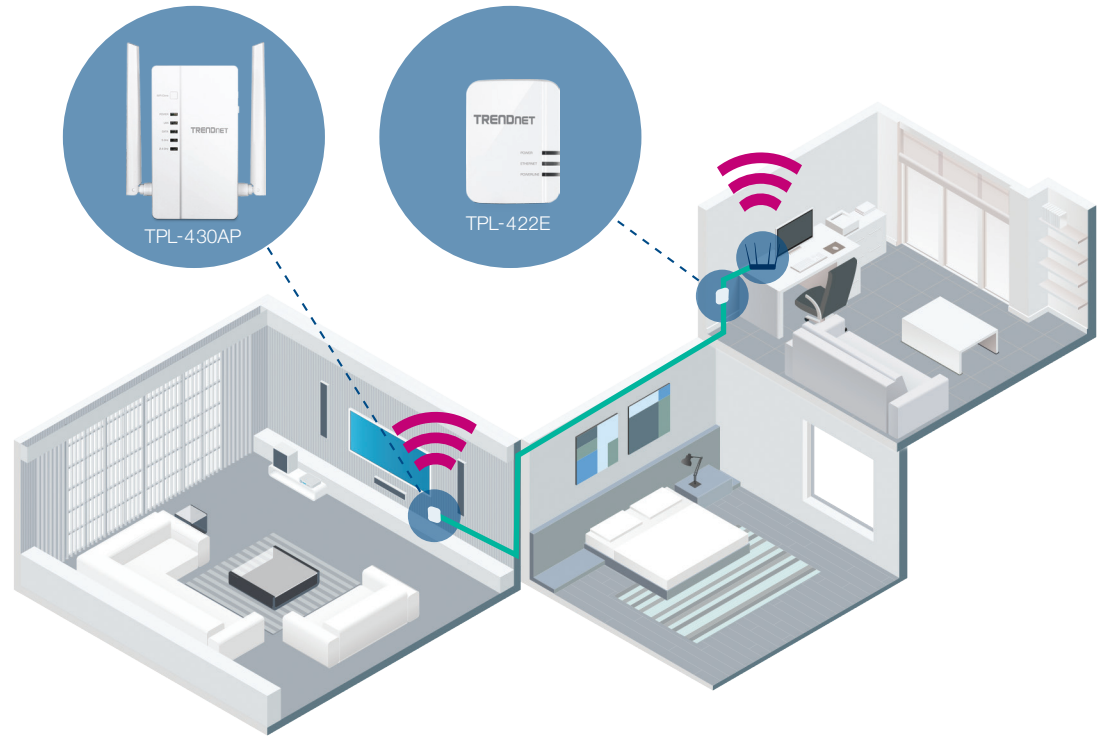
Los adaptadores Powerline le ofrecen un acceso sencillo a Internet desde sus tomas de corriente existentes. Los adaptadores Powerline de TRENDnet utilizan su cableado eléctrico existente para crear o ampliar una red por cable. Las soluciones WiFi Everywhere™ Powerline de TRENDnet ofrecen conectividad wireless a través de sus tomas de corriente, con puntos de acceso integrados en cada adaptador.

Powerline



WiFi Everywhere™ Powerline 1200

	TPL-430APK	TPL-430AP
Max. speed	1200Mbps	1200Mbps
Specification	AV2	AV2
Port(s)	TPL-430AP: 3 x Gigabit TPL-421E: 1 x Gigabit	3 x Gigabit
Powerline coverage	300m / 984 ft. linear distance over electrical lines	
Power savings	✓	✓
Features	Plug in both adapters to extend a Wireless AC network	Extend your network with built-in AC1200 Wireless
Warranty	3 year	3 year



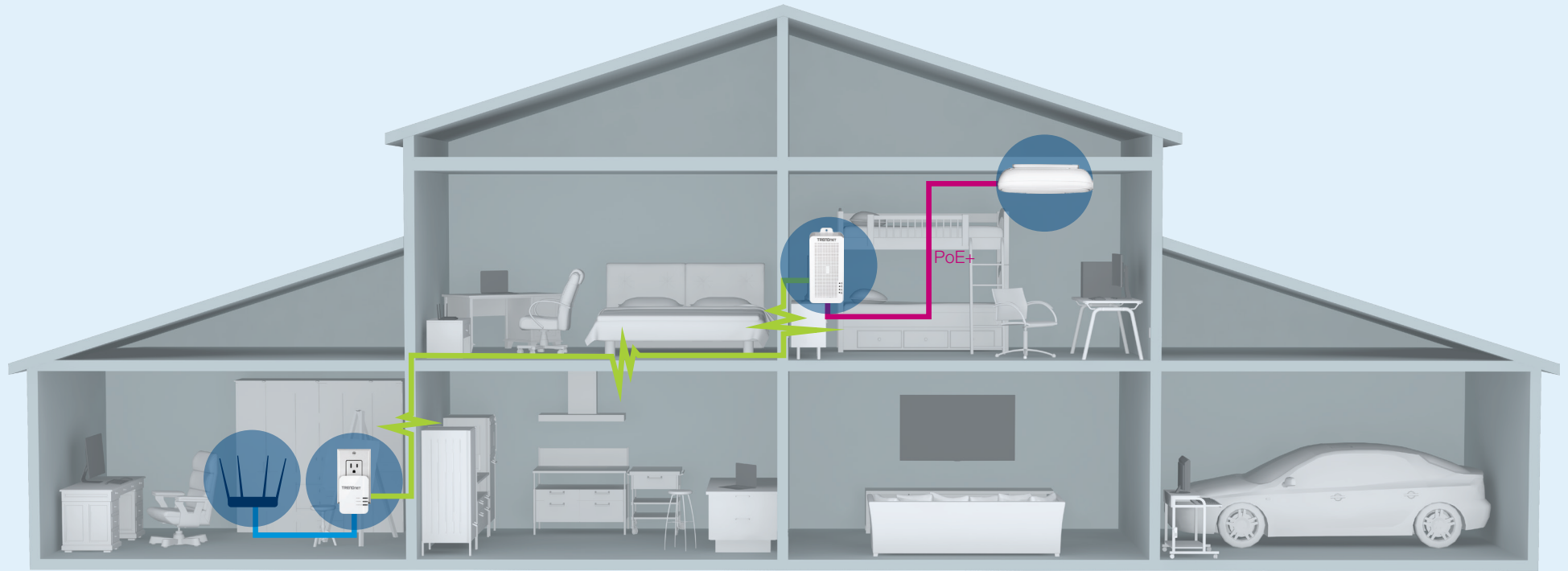
Powerline 1300



Powerline 500

	TPL-423E2K	TPL-422E2K	TPL-407E2K	TPL-406E2K
Max. speed	1300Mbps	1300Mbps	500Mbps	500Mbps
Specification	AV2	AV2	AV	AV
Port(s)	1 x Gigabit	1 x Gigabit	1 x 10/100Mbps	1 x 10/100Mbps
Powerline coverage	300m / 984 ft. linear distance over electrical lines			
Power savings	✓	✓	✓	✓
Features	High performance adapters with built-in electrical outlet	High performance adapters, compact design	Convenient built-in electrical outlet	Performance and value
Warranty	3 year	3 year	3 year	3 year

PoE Powerline



	PoE Powerline	
	TPL-331EP2K	TPL-331EP
Max. speed	200Mbps	200Mbps
Specification	AV	AV
Port	1 x PoE+ output each	1 x PoE+ output
Powerline coverage	300m / 984 ft. linear distance over electrical lines	
Features	Includes two PoE+ Powerline adapters	Built-in PoE+ support
Warranty	3 year	3 year

No need to worry about fishing wires inside and through walls, simply connect PoE+ devices over a Powerline network using your existing electrical system. This is a great way to avoid long Ethernet cable runs to PoE+ devices such as access points, surveillance cameras, and VoIP handsets.

Routers and Adapters

See more wireless solutions in the SMB Wireless section.



	WiFi Routers			WiFi Access Point
	TEW-827DRU	TEW-816DRM	TEW-731BR	TEW-638APB
Wireless rating	AC2600	AC750	N300	N300
Max. data rate / Wi-Fi band	1.73Gbps / AC + 800Mbps / N	433Mbps / AC + 300Mbps / N	300Mbps / 2.4GHz	300Mbps / 2.4GHz
Ports	4 x Gigabit	4 x 10/100Mbps	4 x 10/100Mbps	1 x 10/100Mbps
Features	MU-MIMO, high gain antennas	Combination VDSL2/ADSL2+ modem and WiFi AC750 router	Extended range with MIMO technology, 5 dBi antennas	Detachable antennas
USB port	USB 3.0	2 USB 2.0	-	-
Guest network	✓	✓	-	-
Pre-encrypted	✓	✓	✓	-
Parental controls	✓	✓	✓	-
Warranty	3 year	3 year	3 year	3 year



	WiFi Extenders	WiFi Adapters				WiFi / Bluetooth® Adapters
	TEW-822DRE	TEW-809UB	TEW-807ECH	TEW-808UBM	TEW-648UBM	TBW-108UB
Device	Extender	USB Adapter	PCIe Adapter	USB Adapter	USB Adapter	USB Adapter
Wireless rating	AC1200	AC1900	AC1200	AC1200	N150	N150 + Bluetooth 4.0
Max. data rate / Wi-Fi band	867Mbps / AC + 300Mbps / N	1.3Gbps / AC + 600Mbps / N	867Mbps / AC + 300Mbps / N	867Mbps / AC + 300Mbps / N	150Mbps / N	150Mbps / N
Ports	1 x Gigabit	USB 3.0	-	USB 2.0	USB 2.0	USB 2.0
Features	Extends range of Wireless AC network	High gain detachable antennas & power amplifiers extend coverage	Magnetic base with detachable antennas	MU-MIMO, compact	Compact	Simultaneous WiFi & Bluetooth
OS compatibility	-	Windows® and Mac®	Windows®	Windows® and Mac®	Windows and Mac	Windows® and Mac®
Warranty	3 year	3 year	3 year	3 year	3 year	3 year

Not available in Canada.

Rackmount KVM



Rackmount KVM

	TK-803R	TK-804R	TK-1603R
Computer connections	8	8	16
Monitor port	VGA	VGA	VGA
Max. resolution	2048 x 1536	2048 x 1536	2048 x 1536
Keyboard / mouse	USB / PS/2	USB / PS/2	USB / PS/2
Features	Adjustable auto-scan and audible feedback	On screen display and stackable up to 16 KVM switches (128 PCs)	Compact 1U rack height
Warranty	2 year	2 year	2 year



CAT5 KVM KVM Extenders Video Splitters

	TK-CAT508	TK-CAT5U	TK-CAT5P	TK-EX3	TK-EX4	TK-DEX5	TK-V201S	TK-V401S
Description	8-port CAT5 KVM switch	CAT5 USB server interface module	CAT5 PS/2 server interface module	KVM extension kit	KVM extension kit	KVM extension kit	2-port stackable video splitter	4-port stackable video splitter
Features	Manage up to 8 servers over CAT5 cables for distances up to 30m			Extends up to 150m (490 ft.)	Extends up to 100m (328 ft.)	DVI, audio support, up to 50m (164 ft.)	Clones or repeats a viewing field to up to four monitors (Doesn't extend a viewing field over multiple monitors)	
Warranty	2 year	2 year	2 year	2 year	2 year	2 year	2 year	2 year

Desktop KVM



	Desktop: HDMI/DVI Monitor + USB		Desktop: HD Monitor + USB Keyboard/Mouse				
	TK-240DP	TK-232DV	TK-215i	TK-214i	TK-204UK	TK-222DVK	TK-422DVK
Computer connections	2 / 4	2 / 4	2	2	2	2	4
Monitor port	DisplayPort 1.2	DVI	HDMI	DVI	DVI	DVI	DVI
Max. resolution	3840 x 2160	1920 x 1200 (Digital) 2048 x 1536 (Analog)	1920 x 1080	1920 x 1200	1920 x 1200 (Digital) 2048 x 1536 (Analog)	2560 x 1600	2560 x 1600
Keyboard / mouse	USB	USB	USB	USB	USB	USB	USB
Audio support	✓	✓	✓	✓	✓	✓	✓
Features	Bonus 2-port USB hub	Bonus 2-port USB hub	Ergonomic toggle switch	Ergonomic toggle switch	Bonus 2-port USB hub	Bonus 2-port USB hub	Bonus 2-port USB hub
Cables	-	-	Integrated	Integrated	Included	Included	Included
Warranty	2 year	2 year	2 year	2 year	2 year	2 year	2 year



	Desktop: VGA Monitor + USB Keyboard/Mouse					
	TK-217i	TK-209K	TK-207K	TK-409K	TK-407K	TK-423K
Computer connections	2	2	2	4	4	4
Monitor port	VGA	VGA	VGA	VGA	VGA	VGA
Max. resolution	2048 x 1536	2048 x 1536	2048 x 1536	2048 x 1536	2048 x 1536	2048 x 1536
Keyboard / mouse	USB	USB	USB	USB	USB	USB / PS/2
Audio support	-	✓	-	✓	-	✓
Features	Integrated cables	Top seller	Hot key commands	Hot key commands	Hot key commands	Hot key commands
Cables	Integrated	Included	Included	Included	Included	Included
Warranty	2 year	2 year	2 year	2 year	2 year	2 year

USB-C



USB-C Adapters

	TUC-HDMI3	TUC-HDMI2	TUC-HDMI	TUC-VGA2	TUC-VGA	TUC-ETG
Description	USB-C to HDMI 4K UHD with power delivery and USB 3.0 port	USB-C to HDMI 4K UHD adapter with power delivery	USB-C to HDMI 4K UHD	USB-C to VGA with power delivery	USB-C to VGA HDTV	USB-C to gigabit Ethernet
Features	Bonus USB-C port charges your device, Windows® and Mac® compatible	Bonus USB-C port charges your device, Windows® and Mac® compatible	Windows® and Mac® compatible	Bonus USB-C port charges your device, Windows® and Mac® compatible	Windows® and Mac® compatible	Windows® and Mac® compatible
Warranty	2 year	2 year	2 year	2 year	2 year	2 year



USB-C Hubs

USB-C Docking Cube

	TUC-H4E2	TUC-H4E	TUC-ETGH3	TUC-DS1
Description	USB-C to 4-port hub with PD charging	4-port USB-C ultra-mini hub	USB-C to gigabit adapter + USB hub	Universal USB-C docking station
Features	Charging capability, Windows® and Mac® compatible	Windows® and Mac® compatible	Windows® and Mac® compatible	Connect to your network and devices w/ a single cable
Warranty	2 year	2 year	2 year	2 year

USB



USB 3.0					
	TU3-H4E	TU3-H4	TU3-ETGH3	TU3-ETG	TU3-DS2
Description	4-port USB 3.0 hub	4-port USB 3.0 hub	USB 3.0 to gigabit adapter + USB hub	USB 3.0 to gigabit adapter	Universal USB 3.0 docking station
Features	No CD installation required	No CD installation required	Windows® and Mac® compatible	Windows®, Mac®, Linux 2.6 compatible	Connect to your network and devices w/ a single cable
Warranty	2 year	2 year	2 year	2 year	2 year



	USB Hubs & Peripherals				USB Adapters & Converters		
	TU2-H10	TU2-700	TU2-EX12	TU2-EX5	TU2-ET100	TU-S9	TU-P1284
Description	10-port USB hub	7-port USB hub	12m USB cable	5m USB cable	USB to Ethernet adapter	USB to serial converter	USB to parallel 1284 converter
Features	Adds 10 USB 2.0 ports, no CD installation required	Adds 7 USB 2.0 ports, no CD installation required	Extends the distance between a USB device and your computer by 12m (39 ft.)	Extends the distance between a USB device and your computer by 5m (16 ft.)	Windows® and Mac® compatible	Convert to RS-232 serial port, Windows® and Mac® compatible	Use with parallel printer port, Windows® and Mac® compatible
Warranty	2 year	2 year	2 year	2 year	3 year	2 year	2 year

Contact TRENDnet

Headquarters Address

20675 Manhattan Place
Torrance, CA 90501
USA

www.TRENDnet.com

Main Phone Number
Toll Free Number
Main Fax Number

310-961-5500
888-326-6061
310-961-5511

info@trendnet.com



Department

North America Sales
(US, Canada, UK)

Extension 1

sales@trendnet.com

International Sales

Extension 2

intlsales@trendnet.com (EMEA, APAC)
latam@trendnet.com (LATAM)

Marketing

marketing@trendnet.com

Customer Service

Extension 3

Online Feedback System
www.trendnet.com/company/feedback/

Pre-sales

Extension 4

Technical Support

866-845-3673

Online Help Desk Ticket System
www.trendnet.com/support/helpdesk

866-994-1451

Premium Support (additional fee)
www.trendnet.com/support/premium_support

Some information may have changed since the printing of this catalog. For the latest product information and to view our complete product line, please visit our website.

Member



Works with



Partners



