



Product Catalog

2007/2008

Contents

Wireless	3
VoIP	9
Routers	10
Adapters	11
Powerline	12
Storage Servers	13
Print Servers	14
Switches	16
Power over Ethernet.....	23
Internet Cameras	24
KVM	26
Modems	29
Medianet	30
Network Accessories	32





Wireless



Bring the true capabilities of your network to life with TRENDnet's Wireless N-Draft products featuring an incomparable 300Mbps of speed, a rate 10 times faster than even Wireless G! Finally everyone on your network can simultaneously enjoy a variety of applications from high definition video, VoIP, to file sharing at faster speeds and without interruption. Virtually connect from anywhere in your home or office as deadspots are a thing of the past with Wireless-N's wide area coverage.

300Mbps Wireless N-Draft

Key Features

- 300Mbps speed to handle bandwidth intensive applications
- 10x the range and 10x the speed of Wireless G
- IEEE 802.11b/g compliant
- QoS traffic prioritization for multimedia streaming and online gaming
- Advanced WPA security and content filtering
- 3-year warranty



TEW-621PC
300Mbps Wireless N-Draft PC Card

- Supports three internal PCB antennas
- Automatic data rate switching
- Infrastructure mode



TEW-623PI
300Mbps Wireless N-Draft PCI Adapter

- 1x5dBi and 2x2dBi detachable antennas
- Automatic data rate switching
- Infrastructure mode



TEW-630APB
300Mbps Wireless N-Draft Access Point

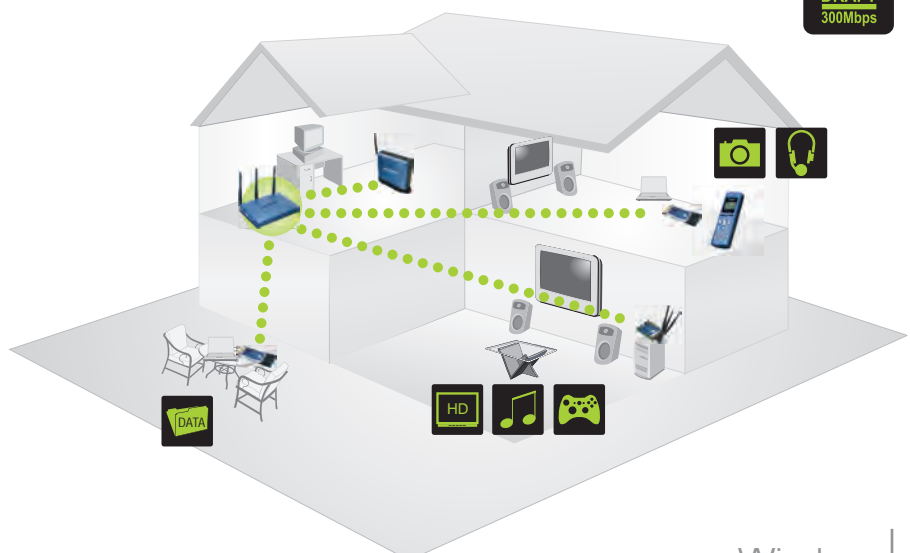
- Access point and WDS bridge (up to 6 units)
- Wireless signal and SSID on/off control
- Flash memory firmware upgrade



TEW-631BRP
300Mbps Wireless N-Draft Firewall Router

- Three 4dBi external dipole antennas, 2 fixed and 1 detachable
- Dual firewall protection with NAT & SPI
- Supports multiple and concurrent VPN pass-through sessions
- Traffic control with virtual server and DMZ
- QoS traffic acceleration and classification
- Easy management via web browser (HTTP) and remote management
- 4 x 10/100Mbps Auto-MDIX LAN port and 1 x 10/100Mbps WAN port

Wireless N-Draft Delivers Digital Entertainment



Key Features

- IEEE 802.11b/g compliant
- 108Mbps Dynamic Turbo mode speed
- High speed bridge and repeater throughput
- Features Super G (108Mbps) technology
- Create your own Hotspot
- Advanced WPA encryption
- 3-year warranty



TEW-441PC
108Mbps Super G Wireless PC Card

- Wi-Fi compliant with IEEE 802.11b/g
- Utilizes 2.4GHz frequency band
- Ad-hoc or infrastructure mode
- Automatic data rate switching



TEW-443PI
108Mbps Super G Wireless PCI Adapter

- Wi-Fi compliant with IEEE 802.11b/g
- Utilizes 2.4GHz frequency band
- Ad-hoc mode or infrastructure mode
- Detachable 2dBi dipole antenna with reverse SMA connector



TEW-444UB
108Mbps Super G Wireless USB Adapter

- Wi-Fi compliant with IEEE 802.11b/g
- Ad-hoc or infrastructure mode
- Automatic data rate switching
- Simple user setup and diagnostics utilities



TEW-445UB
108Mbps Super G High Power Wireless USB 2.0 Adapter

- Wi-Fi compliant with IEEE 802.11b/g
- Supports high output power up to 23dBm for long range performance
- XR (eXtended Range) technology with advanced power management
- Range of up to 100m (328ft.) indoors and 300m (984ft.)* outdoors



TEW-450APB
108Mbps Super G Wireless Access Point

- Wi-Fi compliant with IEEE 802.11b/g
- Access point, AP client, repeater and bridge
- WDS enable/disable function
- SSID enable/disable and password protection
- Flash memory for firmware upgrade



TEW-452BRP
108Mbps Super G Wireless SPI Firewall Router

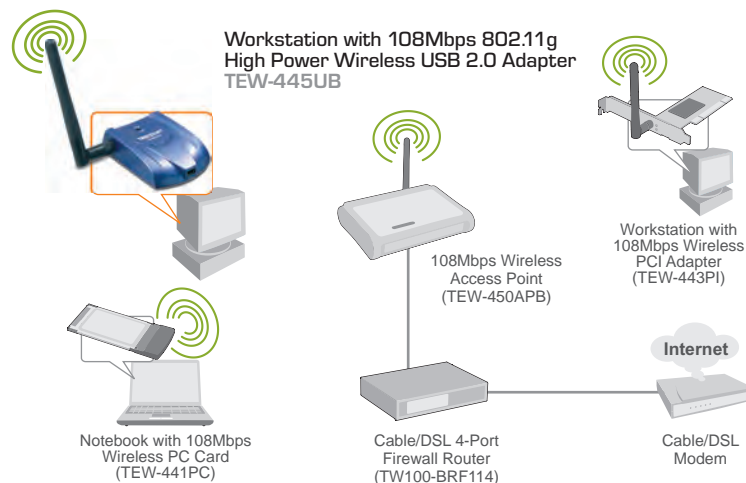
- Wi-Fi compliant with IEEE 802.11b/g
- Supports dynamic and static, PPPoE, PPTP or L2TP
- Double firewall protection NAT and SPI
- SSID enable/disable and password protection
- Supports multiple and concurrent VPN pass-through sessions



TEW-453APB
108Mbps Super G HotSpot Access Point

- Wi-Fi compliant with IEEE 802.11b/g
- Features Super G (108Mbps) technology
- Supports worldwide wireless mode 802.11d
- Access point, AP client, repeater and bridge
- One 2dBi detachable antenna with reverse SMA connector
- 802.1Q Tag VLAN

Wireless Networking



Key Features

- Dual-Band support - IEEE 802.11a/b/g compliant
- 108Mbps Dynamic Turbo mode speed
- Avoids potential interference with clean 5GHz channel
- Router and AP simultaneously support both A+G networks
- Advanced WPA security
- 3-year warranty



TEW-504UB
108Mbps Super AG Wireless USB Adapter

- Wi-Fi compliant with IEEE 802.11a/b/g
- Features Super AG (108Mbps) technology
- Utilizes 5GHz or 2.4GHz dual band design
- Ad-hoc or infrastructure mode
- Compliant with USB 2.0 and USB 1.1



TEW-510APB
108Mbps Super AG Wireless Access Point

- Wi-Fi compliant with IEEE 802.11a/b/g
- Utilizes 5GHz or 2.4GHz dual band design
- Features Super AG (108Mbps) and XR (eXtended Range) technology
- WDS access point, AP client/repeater modes



TEW-511BRP
108Mbps Super AG Wireless Router

- Wi-Fi compliant with IEEE 802.11a/b/g
- Utilizes 5GHz or 2.4GHz dual band design
- Features Super AG (108Mbps) and XR (eXtended Range) technology
- Double firewall protection NAT and SPI
- Supports multiple and concurrent VPN pass-through sessions

54Mbps Wireless G LAN



TEW-421PC
54Mbps Wireless G PC Card

- Utilizes 2.4GHz frequency band
- Ad-hoc or infrastructure mode
- Automatic data rate switching



TEW-423PI
54Mbps Wireless G PCI Adapter

- Utilizes 2.4GHz frequency band
- Ad-hoc or infrastructure mode
- Automatic data rate switching
- Detachable 2dBi dipole antenna with reverse SMA connector



TEW-424UB
54Mbps Wireless G USB Adapter

- Utilizes 2.4GHz frequency band
- Ad-hoc or infrastructure mode
- Compliant with USB 2.0, 1.1 and 1.0
- Automatic data rate switching



TEW-430APB
54Mbps Wireless G Access Point

- Wi-Fi Compliant with IEEE 802.11b/g
- Built-in 10/100Mbps auto-sensing fast ethernet port
- ESSID enable/disable to increase security
- Access point, bridge or WDS repeater mode
- Flash memory for firmware upgrade



TEW-432BRP
54Mbps Wireless G SPI Firewall Router

- Wi-Fi compliant with IEEE 802.11b/g
- Supports dynamic and static, PPPoE or PPTP
- Traffic control with virtual server and DMZ
- Double firewall protection NAT and SPI
- Supports multiple and concurrent VPN pass-through sessions
- Universal Plug and Play (UPnP)



TEW-434APB
54Mbps Wireless PoE Access Point

- Power over Ethernet (PoE) IEEE 802.3af support
- Built-in 10/100Mbps auto-sensing fast ethernet PoE port
- ESSID enable/disable to increase security
- Access point, AP client, WDS repeater mode
- Flash memory for firmware upgrade

Key Features

- Locate Wi-Fi HotSpots on the go
- IEEE 802.11a/b/g compliant

- Easy to read LCD display
- Advanced WPA encryption



TEW-429UF
HotSpot Finder with 11g USB Adapter and 512MB Flash Memory

- Wi-Fi compliant with IEEE 802.11b/g
- Detects IEEE 802.11b/g HotSpots
- 512MB flash memory drive
- Ad-hoc or infrastructure mode
- Built-in rechargeable li-on battery
- Custom search by signal strength, SSID or encryption

* Also available in TEW-429UB model



TEW-509UB
HotSpot Finder with 11a/g USB Adapter

- Wi-Fi compliant with IEEE 802.11a/b/g
- Detects IEEE 802.11a/b/g HotSpots
- Ad-hoc or infrastructure mode
- Built-in rechargeable li-on battery
- Custom search by signal strength, SSID or encryption



TEW-453APB
108Mbps Super G HotSpot Access Point

- Wi-Fi compliant with IEEE 802.11a/b/g
- Features Super G (108Mbps) technology
- Supports worldwide wireless mode 802.11d
- Access point, AP client, repeater and bridge
- One 2dBi detachable antenna with reverse SMA connector
- 802.1Q Tag VLAN

Bluetooth

Key Features

- Connect and sync Bluetooth enabled devices
- 723Kbps speed for uninterrupted data transmissions

- 128-bit encryption for superior data security
- Extended wireless coverage up to 100 meters (328 feet) range



TBW-101UB
Bluetooth USB Adapter

- Compliant with USB 1.1, Bluetooth 1.2 and 1.1
- Compliant with Class II Bluetooth operations
- Communicates wirelessly up to 10m (32.8ft.)*

* Depends on environment



TBW-102UB
Bluetooth High Power USB Adapter

- Compliant with USB 1.1, Bluetooth 1.2 and 1.1
- Compliant with Class I Bluetooth operations
- Communicates wirelessly up to 100m (328ft.)*

* Depends on environment



TBW-103UB
Wireless and Bluetooth USB Adapter

- Wi-Fi compliant with IEEE 802.11b/g
- Compliant with USB 2.0, Bluetooth 1.2 and Class 2 Operations
- Bluetooth range of up to 100m (328ft.)*

* Depends on environment



TBW-104UB
Advanced High Power Bluetooth USB Adapter

- Compliant with Bluetooth 2.0 and Class I Operations
- EDR (Enhanced Data Rate) support
- Supports full-speed Bluetooth operations with full piconet support
- Communicates wirelessly up to 100m (328ft.)*

* Depends on environment



TBW-105UB
Compact Bluetooth USB Adapter

- Compliant with Bluetooth 2.0 with EDR (Enhanced Data Rate) support
- Compliant with Class II Bluetooth operations
- Enables Bluetooth devices such as printers, headset, PDAs, and mobile phones
- Communicates wirelessly up to 10m (32.8ft.)*

* Depends on environment

Key Features

- Indoor/outdoor for complete Wi-Fi coverage
- Directional/omni directional solutions
- Maximizes point-to-point capabilities
- Dual-Band IEEE 802.11a/b/g support
- Outdoor housing and surge protection
- 3-year warranty



TEW-AI86DB

Dual-Band 802.11a/b/g 8/6dBi Indoor Directional Antenna with Mounting Base

- 8/6dBi antenna for 5GHz or 2.4GHz frequency
- Compatible with 802.11a/b/g
- Magnetic and detachable antenna base
- 180° tilt up and 360° rotate up adjustable face



TEW-AI750B

Dual-Band 802.11a/b/g 7/5dBi Indoor Omni Antenna with Mounting Base

- 7/5dBi antenna for 5GHz or 2.4GHz frequency
- Compatible with 802.11a/b/g
- Magnetic and detachable antenna base
- 180° tilt up and 360° rotate up adjustable face



TEW-AO100

802.11b/g 10dBi Indoor/Outdoor Omni Directional Antenna

- 10dBi antenna for 2.4GHz frequency
- Compatible with 802.11b/g
- Easy-to-install wall/pole mounting

* Also available in TEW-AO080 model 8dBi antenna



TEW-AO09D

802.11b/g 9dBi Indoor/Outdoor High-Gain Directional Antenna

- 9dBi antenna for 2.4GHz frequency
- Compatible with 802.11b/g
- Indoor/outdoor bridging or extended range antenna
- Easy-to-install wall/pole mounting



TEW-AO14D

802.11b/g 14dBi Outdoor High-Gain Directional Antenna

- 14dBi antenna for 2.4GHz frequency
- Compatible with 802.11b/g
- Higher power output extends transmission range
- Easy-to-install wall/pole mounting



TEW-AO19D

802.11b/g 19dBi Outdoor High-Gain Directional Antenna

- 19dBi antenna for 2.4GHz frequency
- Compatible with 802.11b/g
- Ideal for point-to-point bridge connections between buildings/zones
- Easy-to-install wall/pole mounting



TEW-AMBA

Cross-Brand Converter (N-type to TNC)

- Compliant with 802.11a/b/g with RP-TNC male connector
- Adapts RP-TNC connectors for use with TRENDnet RP-SMA antennas, cables and accessories
- Optimized for use with TRENDnet's indoor/outdoor antennas, antenna cables and surge protection kit



TEW-ASAK

Outdoor Arrestor Kit

- Compatible with 802.11a/b/g wireless devices
- Multi-strike capability and bi-directional protection
- Cable converter included for flexible connection
- Easy-to-install wall mounting



TEW-L202

LMR200 Reverse SMA to N-Type Cable/2m (6ft)



TEW-L208
**LMR200 Reverse SMA to N-Type
Cable/8m (24ft)**



TEW-L406
N-Type to N-Type Cable/6m (18ft)



TEW-L412
N-Type to N-Type Cable/12m (36ft)

Coming Soon

TEW-912APB0
Wi-Max Outdoor Access Point

Wireless Comparison Chart

Wireless Routers

Model	TEW-432BRP	TEW-435BRM	TEW-452BRP	TEW-511BRP	TEW-631BRP
Product Description	54Mbps Wireless SPI Firewall Router	54Mbps Wireless ADSL Firewall Modem Router	108Mbps Wireless SPI Firewall Router	108Mbps Wireless Router	300Mbps Wireless Router
Wireless Support	802.11b/g	802.11b/g	802.11b/g	802.11a/b/g	802.11b/g, N-Draft
Frequency	2.4GHz	2.4GHz	2.4/5GHz	2.4GHz/ 5GHz	2.4GHz
Speed	54Mbps	54Mbps	108Mbps	108Mbps	300Mbps
Ports	LAN: Four (4) x 10/100Mbps WAN: One (1) x 10/100Mbps	LAN: Four (4) x 10/100Mbps WAN: One (1) x 10/100Mbps	LAN: Four (4) x 10/100Mbps WAN: One (1) x 10/100Mbps	LAN: Four (4) x 10/100Mbps WAN: One (1) x 10/100Mbps	LAN: Four (4) x 10/100Mbps WAN: One (1) x 10/100Mbps
MIMO					•
WEP	64/128-bit	64/128-bit	64/128-bit	64/128-bit	64/128-bit
WPA	802.1x, WPA-PSK	WPA/WPA2, WPA-PSK/WPA2-PSK	802.1x, WPA, WPA-PSK	802.1x, WPA	802.1x, WPA/WPA2
NAT	•	•	•	•	•
Stateful Packet Inspection (SPI)	•	•	•	•	•
VPN Passthrough	•	•	•	•	•
Antenna	1 x 2dBi	1 x 2dBi	1 x 2dBi	1 x 2dBi	3 x 4dBi
Warranty	3 year	3 year	3 year	3 year	3 year

Wireless Access Points

Model	TEW-430APB	TEW-434APB	TEW-450APB	TEW-453APB	TEW-510APB	TEW-630APB
Product Description	54Mbps Wireless Access Point	54Mbps Wireless Access Point	108Mbps Wireless Access Point	108Mbps HotSpot Access Point	108Mbps Wireless Access Point	300Mbps Wireless Access Point
Wireless Support	802.11g	802.11g	802.11b/g	802.11b/g	802.11a/g	802.11b/g, N-Draft
Frequency	2.4GHz	2.4GHz	2.4/5GHz	2.4GHz	2.4/5GHz	2.4GHz
Speed	54Mbps	54Mbps	108Mbps	108Mbps	108Mbps	300Mbps
Ports (10/100Mbps)	1	1 (PoE)	1	1	1	1
Supported Modes	AP, AP Client, Bridge, Repeater	AP, AP Client, WDS, AP+WDS, Repeater	AP, AP Client, Bridge, Repeater	AP, AP Client, Repeater	AP, AP Client, Repeater	AP, Bridge
Security / WEP	64/128-bit	64/128-bit	64/128-bit	64/128/152-bit	64/128/152-bit	64/128/152-bit
802.1x RADIUS Auth./WPA	WPA/WPA2, WPA-PSK/WPA2-PSK	WPA/WPA2, WPA-PSK/WPA2-PSK	WPA/WPA2, WPA-PSK/WPA2-PSK	WPA, WPA-PSK	WPA, WPA-PSK	WPA/WPA2, WPA-PSK/WPA2-PSK
SSID Broadcast Enable/Disable	•	•	•	•	•	•
Multiple SSID Support				•		
Antenna	1 x 2dBi	1 x 2dBi	1 x 2dBi	1 x 2dBi	2 x 2dBi	3 x 4dBi
Warranty	3 year	3 year	3 year	3 year	3 year	3 year



VoIP



TRENDnet's recently launched VoIP solutions aim to help home and small businesses save money by offering an affordable and high voice quality alternative to traditional telephony. Skype™ has become the leading VoIP provider in the world. By using TRENDnet's Skype™ Bluetooth® Kit or Speakerphone, users can make free calls to other Skype™ users anywhere in the world.

Key Features

- Save on traditional telephony using Skype™, SIP and H.323 solutions
- Make carrier class quality calls to regular landline and mobile phones worldwide
- Make free Skype™ calls using the handset and hands-free conference phone solutions
- Skype™ solutions support MSN and Yahoo Messenger voice communication
- Bridge between analog and IP voice networks
- Ideal for regular communication with branch office locations
- 2-year warranty



TVP-SP1BK
ClearSky™ Bluetooth® VoIP Phone Kit (for Skype™)

- Compliant with Bluetooth® v2.0 specification with EDR (Enhanced Data Rate) support
- Compliant with Class I Bluetooth® operations
- Full Skype™ support allows users to use Skype™ features directly from the phone
- Handset support for voice communication such as MSN and Yahoo Messenger
- ClearSky™ long range supports up to 100m (328ft.)*

* Depends on environment



TVP-SP2
VoIP USB Speakerphone (for Skype™)

- Built-in high performance microphone and mono speaker
- Echo-cancellation function provides superior sound quality
- Supports MSN and Yahoo Messenger voice communication
- LCD display for caller ID, contact list, user and call status
- Supports multi-language display and hot-key functions for easy control
- Plug and Play



TVP-SP3
Clearlink VoIP USB Phone (for Skype™)

- Echo-cancellation function provides superior sound quality
- LCD display for caller ID, contact list and calling list with backlight support
- Supports multi-language display and hot-key functions for easy control
- Plug and Play



TVP-SP4BK
ClearSky™ VoIP Bluetooth® Bridge Speakerphone (for Skype™)

- Compliant with Bluetooth® v2.0 specification
- Backward compatible with Bluetooth® v1.2 and v1.1
- Compliant with Class I Bluetooth® operations
- ClearSky™ long range supports up to 100m (328ft.)*

* Depends on environment



TVP-SP5G
ClearLink VoIP USB Phone Adapter (for Skype™)

- Enables an existing telephone to make/receive Skype™ and regular calls
- Remote calling feature support
- USB Bus-powered, no external power source needed
- Easy installation with windows based utility
- Plug and Play

Coming Soon

TVP-601SA
VoIP Telephone Adapter (SIP)



Routers



Using TRENDnet firewall routers as the head-end of a home or business network means multiple users can share secure broadband access with protection from unwanted intruders. For the ultimate in security, TRENDnet routers feature dual NAT and SPI firewalls, as well as VPN encrypted pass-through and end-point tunnel support. Set-up and management is effortless through real-time email alerts, Universal Plug and Play and remote management capabilities.

Key Features

- VPN endpoint and pass-through support for secure LAN access
- Dual NAT and SPI firewall protection from potential internet attacks
- Advanced content filtering
- 5-year warranty



TW100-BRF114
Cable/DSL 4-Port Firewall Router

- 4 x 10/100Mbps Auto-Sensing ports
- Double firewall protection NAT and SPI
- Supports cable mode/xDSL modem dynamic and static IP, PPPoE, PPTP or L2TP
- ALGs and special application support
- Supports multiple and concurrent VPN pass-through sessions
- Traffic control with virtual server and DMZ
- Real-time email alert and logs



TW100-BRV204
Cable/DSL 4-Port VPN Firewall Router

- 3 x 10/100Mbps auto-MDIX ports and 1 x 10/100Mbps DMZ port
- 1 x 10/100Mbps WAN port
- Double firewall protection NAT and SPI
- Supports up to 10 IPSec tunnels
- Supports multiple and concurrent VPN pass-through sessions
- Supports cable/DSL modems with dynamic and static IP, PPPoE, PPTP or L2TP
- Static routing, dynamic DNS service and DMZ



TW100-BRV304
Cable/DSL 4-Port Advanced VPN Firewall Router

- 3 x 10/100Mbps auto-MDIX ports and 1 x 10/100Mbps DMZ port
- 1 x 10/100Mbps WAN port 1 x 10/100Mbps DMZ port
- Double firewall protection NAT and SPI
- Supports up to 70 IPSec tunnels
- Supports cable/DSL modems with dynamic and static IP, PPPoE, PPTP or L2TP
- Supports multiple and concurrent VPN pass-through sessions
- Static routing, dynamic DNS service and DMZ



TW100-S4W1CA
Cable/DSL 4-Port Broadband Router

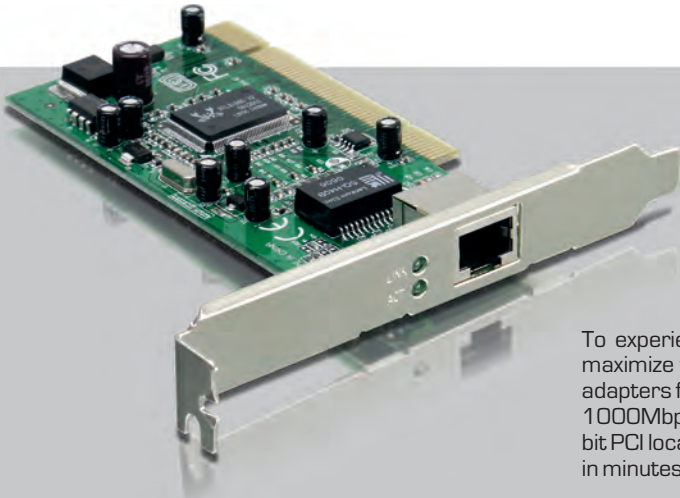
- 4 x 10/100Mbps auto-MDIX port
- Supports cable/DSL modem with dynamic and static (Fixed) IP, PPPoE or PPTP
- Supports multiple and concurrent VPN pass-through sessions
- NAT firewall protection
- DHCP server supports up to 253 users
- Traffic control with virtual server and DMZ
- Universal Plug and Play (UPnP)



TW100-BRM504
ADSL Modem 4-Port Firewall Router

- 4 x 10/100Mbps auto-MDIX port
- Supports router (router+modem) or modem (modem only) mode
- Compliant with ADSL, ADSL2, ADSL2+
- Supports virtual DMZ, virtual servers (port forwarding) and firewall rules
- Supports multiple and concurrent VPN pass-through sessions
- Double firewall protection NAT and SPI
- Real-time email alert and logs
- DHCP server supports up to 253 users

Go to: www.trendnet.com



Adapters



To experience optimum end-to-end network performance, client and server adapters that maximize throughput are essential. TRENDnet offers fiber, copper Gigabit and Fast Ethernet adapters for desktops, laptops and servers. There's no file too big or application too intense with 1000Mbps of speed, auto-sensing and full duplex mode capabilities. Available in 32-bit and 64-bit PCI local bus and hot-swappable card bus models, desktops or notebooks will be ready to go in minutes with plug and play installation.

Key Features

- 32-bit and 64-bit gigabit and fast ethernet PCI adapters
- Fiber and copper gigabit adapters for end-to-end speed
- Full-duplex mode for double the bandwidth
- Wake-on-LAN for remote wake up and admin control
- Automatic FIFO buffer for smoother data flow
- 5-year warranty

Desktop Workstation/Server Adapters



TEG-PCISXM2
64-bit 1000-Base-SX SC-Type Gigabit Fiber PCI Adapter

- IEEE 802.3z 1000 Base-SX compliant
- Support 32/64-bit PCI local bus
- One SC-type connector for 50/125 and 62.5/125u multimode fiber cable



TEG-PCITXR
32-bit 10/100/1000Mbps Copper Gigabit PCI Adapter

- IEEE 802.3, 802.3u and 802.3ab compliant
- Support 32-bit PCI local bus
- One IEEE 802.1Q VLAN tagging
- Supports Wake-on-LAN for remote wake up



TE100-PCIWN/TE100-PCIWA
10/100Mbps Fast Ethernet PCI Adapter

- IEEE 802.3, IEEE 802.3u, and IEEE 802.3x compliant
- Supports 32-bit PCI bus
- Supports full-duplex mode that doubles the data rate up to 200Mbps

Notebook/Pocket PC Adapters



TE100-PCBUSR
32-bit 10/100Mbps CardBus PC Card with Xpress port

- PCMCIA cardBus 68-pin connector type II card compliant
- 32-bit bus-mastering data transfer
- 10/100Mbps data rate auto-negotiation operation



TEG-PCBUSR
32-bit 10/100/1000Mbps CardBus Gigabit PC Card

- PCMCIA cardBus 68-pin connector type II card
- 32-bit bus-mastering data transfer
- 10/100/1000Mbps data rate auto-negotiation operation



Powerline



TRENDnet's Powerline products allow your PC, IP Camera, Print or Storage Server to be easily connected to your network by enabling your home and office power lines to act as your networking cable. With no cables to buy or install, users save time, money, and desk space. Best of all Powerline products work around any potential wireless distance limitations. Compatible with HomePlug 1.0 specifications, quickly share data at high speeds of up to 85Mbps with 56-bit DES encryption for wired Ethernet and 125Mbps with WPA for wireless.

Key Features

- Instantly connect and share network resources over existing electrical outlets
- Router delivers 10/100Mbps, 802.11b/g and powerline connectivity all in one box
- Full line of routers, access points and adapters
- Up to 300 meters of range for entire home or office coverage
- Advanced WPA and powerline 56-bit DES encryption
- 3-year warranty



TPL-202E

85Mbps Powerline Ethernet Bridge

- Connect to a network using existing powerlines with wall-plugged design
- Up to 85Mbps high-speed data transfer rate over powerlines
- Allows concurrent shared Internet access across existing electrical outlets
- Supports up to 16 clients per network
- 56-bit data encryption security



TPL-210AP

85Mbps Powerline Wireless Access Point

- Wi-Fi compliant with IEEE 802.11b/g
- Up to 54Mbps high speed over wireless connection
- Up to 85Mbps high-speed data transfer rate over powerlines
- Access point, bridge or WDS repeater modes
- Supports ESSID enable/disable feature to increase security
- 64/128-bit WEP, WPA and WPA-PSK
- Supports AP isolation and MAC address filtering

Coming Soon

TPL-302E

200Mbps Powerline Ethernet Bridge

TPL-310AP

200Mbps Powerline Wireless Access Point



Storage Servers



By adding TRENDnet storage servers to your home or office users can share, back-up and stream files effortlessly across wired or wireless networks. TRENDnet's family of storage servers supports IDE, SATA and a range of external solutions for unlimited storage. Operated with a web based utility, administrators can efficiently manage network access through IP filtering or remotely transfer data using an FTP server. Network storage and access is now fast and flexible.

Key Features

- Back up and share data and multimedia files over the network
- Unlimited storage with IDE and SATA storage enclosures
- Remote web access to FTP server
- Enables network access to external hard drive, CD-ROM, flash drives and other storage devices
- User-friendly web-based Utilities
- 2-year warranty



TS-U200
USB 2.0 Network Storage Server with Memory Card Reader/Writer

- Compliant with USB 2.0 and 1.1
- Built-in-one 10/100Mbps auto-MDIX fast ethernet LAN port and 2 USB 2.0 ports
- Equipped with all-in-1 memory card reader/writer
- Acts as DHCP client to locate IP from DHCP server or auto-IP
- Security with IP address filtering to allow or deny access
- Supports USB 2.0 external disk drive, flash disk and CD-ROM storage devices



TSE-IS401
USB 2.0 1-Bay IDE/SATA Enclosure

- Connects to 3.5" SATA II or SATA hard drives
- Compliant with serial ATA II electrical specification 1.0
- Support USB 2.0 data transfer rate of up to 480Mbps
- Compliant with USB 2.0 and 1.1 specifications
- Compliant with Windows 98SE/ME/2000/XP and Mac OS 8.6 or later
- Plug and Play



TS-I300
IDE Network Storage Enclosure

- Compliant with USB 2.0 and 1.1
- Built-in-one 10/100Mbps auto-MDIX fast ethernet LAN port and 2 USB 2.0 ports
- Embedded 3.5" IDE HD bay (HD not included)
- Security with IP address filtering to allow or deny access
- Automatic schedule downloads without PC on
- Provides FTP server service
- Universal Plug and Play (UPnP)
- IP assignment support for DHCP or static IP



TS-I300W
IDE Wireless Network Storage Enclosure

- Wi-Fi Compliant with IEEE 802.11b/g
- Compliant with USB 2.0 and 1.1
- Built-in-one 10/100Mbps auto-MDIX fast ethernet LAN port and 2 USB 2.0 ports
- Embedded 3.5" IDE HD bay (HD not included)
- Security with IP address filtering to allow or deny access
- Automatic schedule downloads without PC on
- Provides FTP server service
- Universal Plug and Play (UPnP)
- IP assignment support for DHCP or static IP

Coming Soon

TSS402
USB 2.0 2-Bay SATA Network Storage Enclosure

TSS404
4-Bay USB 2.0 SATA Network Storage Enclosure



Print Servers



It's time the printer became a part of the network. TRENDnet print servers offer a simple and cost effective way to save money and improve productivity by sharing a printer among multiple users from anywhere in the home or office. TRENDnet offers a mix of print servers that allow users to connect wired or wirelessly using 54Mbps 802.11g technology or 10/ 100 Fast Ethernet cabling. Finding the right model is easy with parallel, USB and multi-port models that support up to three network accessible printers.

Key Features

- Wired and wireless 802.11b/g solutions to maximize workgroup productivity
- USB and parallel multiple port configurations
- Remote web configuration and IPP printing
- TCP/IP for a variety of application layer protocols
- Universal Plug and Play (UPnP)

Wireless Print Servers



TEW-P1PG
Wireless G Print Server (1 Parallel)

- Wi-Fi compliant with IEEE 802.11b/g
- IEEE 1284 standard male centronics bi-directional parallel interface (DB-36)
- One RJ-45 10/100Mbps auto-MDIX fast ethernet port
- Includes LPR program for Windows 95/98/ME TCP/IP printing
- Latest MIB-II (RFC 1213) for SNMP standard management
- TCP/IP protocol supports SNMP, Telnet, TFTP, FTP, LPD, DHCP, BOOTP and IPP
- IP assignment support for DHCP, BOOTP and RARP



TEW-P1UG
Wireless G Print Server (1 USB 2.0)

- Wi-Fi compliant with IEEE 802.11b/g
- Compliant with USB 2.0 high-speed printing
- One RJ-45 10/100Mbps auto-MDIX fast ethernet port
- Supports email printing and FTP printing
- Includes LPR program for Windows 95/98/ME TCP/IP printing
- Latest MIB-II (RFC 1213) for SNMP standard management
- TCP/IP protocol supports SNMP, Telnet, TFTP, FTP, LPD, DHCP, BOOTP and IPP
- Includes Windows-based administrative program and web-based configuration



TEW-P21G
Wireless G Print Server (2 USB 2.0, 1 Parallel)

- Wi-Fi compliant with IEEE 802.11b/g
- Built-in 1 parallel (DB 25) and 2 USB 2.0 (Type A) printer ports
- One RJ-45 10/100Mbps auto-MDIX fast ethernet port
- Includes LPR program for Windows 95/98/ME TCP/IP printing
- Supports IPP printing for Windows 2000/XP
- Latest MIB-II (RFC 1213) for SNMP standard management
- Includes Windows-based administrative program and web-based configuration

Wired Print Servers



TE100-P1P
10/100Mbps Parallel Print Server
(1 Parallel)

- Compliant with bi-directional 36-pin parallel port
- One RJ-45 10/100Mbps auto-MDIX fast ethernet port
- Includes LPR program for Windows 95/98/ME TCP/IP printing
- Supports IPP printing for Windows 2000/XP
- Supports second HTTP port for remote web configuration and IPP printing
- Includes Windows-based administrative program and web-based configuration
- TCP/IP protocol supports DHCP, IPP, LPR, HTTP



TE100-P1U
10/100Mbps USB 2.0 Print Server
(1 USB)

- Compliant with USB 2.0 high-speed printing
- One RJ-45 10/100Mbps auto-MDIX fast ethernet port
- Includes LPR program for Windows 95/98/ME TCP/IP printing
- Supports IPP printing for Windows 2000/XP
- Supports second HTTP port for remote web configuration and IPP printing
- Includes Windows-based administrative program and web-based configuration
- TCP/IP protocol supports DHCP, IPP, LPR, HTTP



TE100-P21
10/100Mbps Multi-Port Print Server
(2 USB 2.0, 1 Parallel)

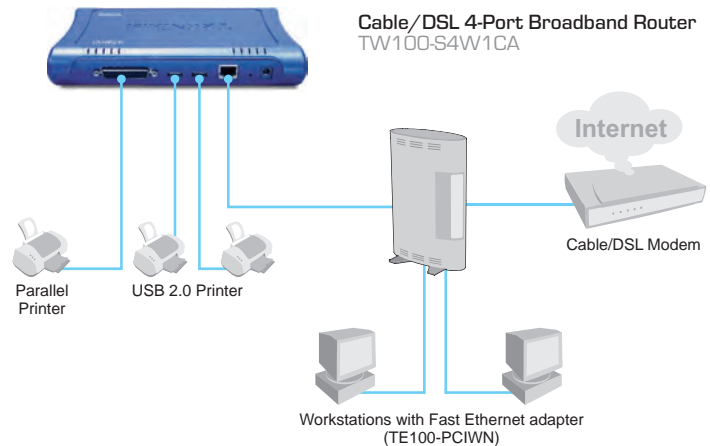
- Compliant with USB 2.0 high-speed printing
- Built-in 1 parallel (DB 25) and 2 USB 2.0 (type A) printer ports
- One RJ-45 10/100Mbps auto-MDIX fast ethernet port
- Supports email printing and FTP printing
- Includes LPR program for Windows 95/98/ME TCP/IP printing
- Latest MIB-II (RFC 1213) for SNMP
- Supports second HTTP port for remote web configuration and IPP printing



TE100-MP1U
10/100Mbps Multi-Function
USB Print Server

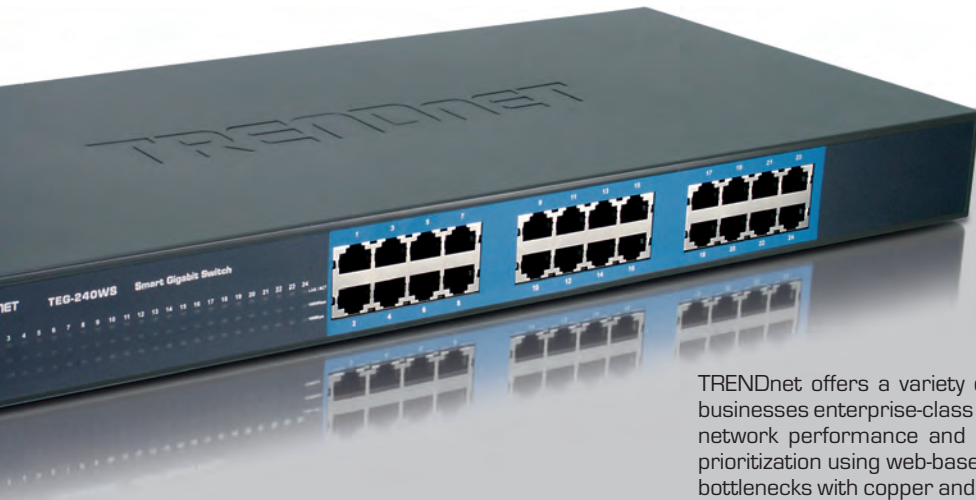
- Compliant with USB 2.0 high-speed printing
- One RJ-45 10/100Mbps auto-MDIX fast ethernet port
- Multi-port function setting capability
- Includes LPR program for Windows 95/98/ME TCP/IP printing
- Supports IPP printing for Windows 2000/XP
- Supports second HTTP port for remote web configuration and IPP printing

Print Servers Networking



Wired and Wireless Print Servers

Model	TEW-P1PG	TEW-P1UG	TEW-P21G	TE100-P1P	TE100-P1U	TE100-P1UD	TE100-P21	TE100-MP1U
Product Description	Wireless G Print Server (1 Parallel)	Wireless G Print Server (1 USB 2.0)	Wireless G Print Server (2 USB 2.0, 1 Parallel)	10/100Mbps Parallel Print Server (1 Parallel)	10/100Mbps USB 2.0 Print Server (1 USB)	10/100Mbps USB Dongle Print Server	10/100Mbps Multi-Port Print Server (2 USB 2.0, 1 Parallel)	10/100Mbps Multi-Function USB Print Server (1 USB 2.0)
Network Type	802.11b/g	802.11b/g	802.11b/g	10/100Mbps	10/100Mbps	10/100Mbps	10/100Mbps	10/100Mbps
Interface	1 x Parallel (DB-36)	1 x USB 2.0	2 x USB 2.0, 1 x Parallel (DB-25)	1 x Parallel (DB-36)	1 x USB 2.0	1 x USB 2.0	2 x USB 2.0, 1 x Parallel (DB-25)	1 x USB 2.0
Warranty	3 year	3 year	3 year	5 year	5 year	5 year	5 year	5 year



Switches



TRENDnet offers a variety of high-performance, scalable switches that provide small businesses enterprise-class features at an affordable price. Administrators can optimize network performance and security with port and tag based segmentation and QoS prioritization using web-based SNMP and Web-Smart switches. Also eliminate potential bottlenecks with copper and fiber gigabit fixed and modular solutions. To bridge between fiber and copper networks and cover campus-wide distances, TRENDnet offers one of the most complete line of fiber converters in the industry. Best of all, TRENDnet switches are backed by a full 5 year warranty.

Key Features

- High-performance web-based, SNMP and smart switches
- VLAN and QoS performance and security management
- Gigabit and fast ethernet rackmount or desktop solutions
- Fiber converters with distance capability of up to 100km (62mi)
- Remotely manage up to 16 switches with single IP address
- 5-year warranty

SNMP



TEG-S2400i
24-Port 10/100Mbps SNMP Switch with Gigabit Slot

- 24 x 10/100Mbps auto-negotiation/fast ethernet ports
- 1 multi-use gigabit module slot
- 802.1Q tag and port based VLAN
- Auto-MDIX media type detection on all ports
- Provides 14K MAC address and 4K VLAN entries
- SNMP (v1.0, MIB II), Telnet and web browser
- IEEE 802.1D spanning tree protocol
- IEEE 802.1p QoS
- 19" (1U) rack mount design



TEG-S2600i
26-Port 10/100Mbps SNMP Stackable Switch

- 24 x 10/100Mbps auto-negotiation/fast ethernet ports
- 2 x 10/100/1000Mbps gigabit copper port and Mini-GBIC slot
- Manage switches locally or remotely with a single IP address
- 802.1Q tag and port based VLAN
- SNMP (v1.0, MIB II), Telnet and web browser
- IEEE 802.1D spanning tree protocol
- 19" (1U) rack mount design



TEG-S3000i
4-Slot Gigabit Layer 2 Managed Chassis

- 3-front slot supports optional 10/100Mbps RJ-45 or 100base-fiber modules
- 1-back slot supports gigabit copper or fiber (SX/LX) modules
- Port based, IEEE 802.1Q and IEEE 802.1v VLAN
- Manage switches locally or remotely with a single IP address
- IGMP (v1 and v2) snooping support for multi-media application
- SNMP (v1.0, MIB II), Telnet and web browser
- 802.1X authentication and authorization
- IEEE 802.1p QoS
- IEEE 802.3ad port trunk with LACP
- 19" (1U) rack mount design

SNMP (Cont.)



TE100-S810Fi
8-Port 10/100 Layer 2 Managed Switch with 100 Base-FX Port

- 8 x 10/100Mbps auto-negotiation/fast ethernet ports
- 1 x 100Base-FX SC type multi-mode fiber port
- Supports switch fabric up to 3.8GBps
- IEEE 802.1Q tag and port based VLAN
- IGMP (v1 and v2) snooping support for multi-media application



TE100-S800i
8-Port 10/100 Layer 2 Managed Switch

- 8 x 10/100Mbps auto-MDIX ports
- Supports switch fabric up to 3.8GBps
- IEEE 802.1Q tag and port based VLAN
- IGMP (v1 and v2) snooping support for multi-media application
- IEEE 802.1p QoS



TEG-S081Fi
8-Port 100Base-FX Layer 2 Managed Switch with GBIC Slot

- 8 x 100Base-FX SC type multi-mode fiber port
- 1 x 100Base GBIC slot for optional GBIC module
- Supports switch fabric up to 3.8GBps
- IEEE 802.1Q tag and port based VLAN
- 19" (1U) rack mount design

Modules for TEG-S2400i



TEG-S24M2F
2-Port 1000Base-SX Multi-Mode SC-Type Fiber Gigabit Module



TEG-S24M11CF
1-Port 1000Base-SX Multi-Mode SC-Type Fiber and 1-Port 1000Mbps RJ-45 Module



TEG-S24M200F
2-Port 100Base-FX Multi-Mode SC-Type Fiber Module

Modules for TEG-S3000i



TEG-S3M2CG
2-Port 10/100/1000Mbps Copper Gigabit Module



TEG-S3M2MG
2-Slot 1000Base-SX/LX Mini-GBIC Module



TEG-S3M8TX
8-Port 10/100Mbps Fast Ethernet Module



TEG-S3M8FX
8-Port 100Base-FX SC-Type Multi-Mode Fiber Module



TEG-S3M8S15
8-Port 100Base-FX SC-Type Single-Mode Fiber Module



TEG-S3M11CF
1-Port 1000Base-FX SC-Type Multi-Mode Fiber Module

Web Smart Switches (All Gigabit Ports)



TEG-160WS

16-Port Gigabit Web-Based Smart Switch

- 16 x 10/100/1000Mbps auto-negotiation and auto-MDIX gigabit ports
- Port based VLAN and IEEE 802.1p QoS
- Port setting function, users can set each port's availability
- 512KB RAM buffer and 8K MAC address
- IEEE 802.3x full duplex and flow control
- Port mirroring and trunking
- 19" (1U) rack mount design kit included



TEG-240WS

24-Port Gigabit Web-Based Smart Switch

- 24 x 10/100/1000Mbps auto-negotiation and auto-MDIX gigabit ports
- Port based VLAN and IEEE 802.1p QoS
- Port setting function, users can set each port's availability
- 512KB RAM buffer and 8K MAC address
- IEEE 802.3x full duplex and flow control
- Port mirroring and trunking
- 19" (1U) rack mount design kit included



TEG-448WS

48-Port Gigabit Web-Based Smart Switch

- 48 x 10/100/1000Mbps auto-negotiation and auto-MDIX gigabit ports
- 4 x 1000Mbps auto-sense Mini-GBIC slots
- IEEE 802.1Q tag based VLAN with QoS
- Port setting function, users can set each port's availability
- 1632KB RAM buffer and 4K MAC address
- Port trunking and port mirroring
- 19" (1U) rack mount design kit included

Web Smart Switches (Mixed Gigabit Ports)



TEG-224WSplus

24-Port Gigabit Web-Based Smart Switch

- 24 x 10/100Mbps auto-negotiation and auto-MDIX fast ethernet ports
- 2 x 10/100/1000Mbps gigabit copper port and Mini-GBIC slot
- Port based VLAN, port-based QoS and IEEE 802.1p QoS
- Port mirroring and trunking
- 19" (1U) rack mount design



TEG-2248WS

48-Port Gigabit Web-Based Smart Switch

- 48 x 10/100Mbps auto-negotiation and auto-MDIX fast ethernet ports
- 2 x 10/100/1000Mbps auto-negotiation and auto-MDIX gigabit ports
- 2 x Mini-GBIC ports for optional LC-type gigabit fiber module
- Port based VLAN and IEEE 802.1p QoS
- 19" (1U) rack mount design



TPE-224WS

24-Port Web Smart Power over Ethernet (PoE) Switch

- IEEE 802.3af Power over Ethernet (PoE) standard compliant
- 24 x 10/100Mbps auto-negotiation and auto-MDIX fast ethernet PoE RJ-45 ports
- 2 x 10/100/1000Mbps auto-negotiating and auto-MDIX gigabit ports
- Port based VLAN, trunking and port mirroring
- 19" (1U) rack mount design

Gigabit Unmanaged (All Ports)



TEG-S50TXE

5-Port 10/100/1000Mbps Copper Gigabit Switch

- 5 x 10/100/1000Mbps gigabit ethernet ports
- Auto-negotiation and auto-MDIX
- Full/Half duplex transfer mode for each port
- IEEE 802.3x full duplex and flow control
- 112KB RAM buffer and 8K MAC address
- Store-and-Forward switching architecture
- Plug and Play
- Back pressure flow control for half-duplex mode



TEG-S80TXE

8-Port 10/100/1000Mbps Copper Gigabit Switch

- 8 x 10/100/1000Mbps gigabit ethernet ports
- Auto-negotiation and auto-MDIX
- Full/Half duplex transfer mode for each port
- IEEE 802.3x full duplex and flow control
- 144KB RAM buffer and 8K MAC address
- Store-and-Forward switching architecture
- Plug and Play
- Sturdy metal housing



TEG-160TX

16-Port 10/100/1000Mbps Copper Gigabit Switch

- 16 x 10/100/1000Mbps auto-negotiation and auto-MDIX on all ports
- Full/Half duplex transfer mode for each port
- IEEE 802.3x full duplex and flow control
- 128KB RAM buffer and 8K MAC address
- 19" (1U) rack mount design

Gigabit Unmanaged (All Ports)



TEG-S240TX

24-Port Gigabit Rack Mount Switch

- 24 x 10/100/1000Mbps auto-negotiation and auto-MDIX ports
- Full/Half duplex transfer mode for each port
- 48Gbps total throughput
- IEEE 802.3x full duplex and flow control
- 400KB RAM buffer and 8K MAC address
- 19" (1U) rack mount design

Coming Soon

TEG-S5

5-Port Compact Gigabit Switch

TEG-S8

8-Port Compact Gigabit Switch

Fast Ethernet



TE100-S5

5-Port 10/100Mbps Fast Ethernet Switch

- 5 x 10/100Mbps fast ethernet ports
- Compliant with IEEE 802.3 / IEEE 802.3u
- Auto-negotiation and auto-MDIX
- Provide 1K MAC address
- Store-and-Forward switching architecture
- Diagnostic LEDs
- Plug and Play



TE100-S8

8-Port 10/100Mbps Fast Ethernet Switch

- 8 x 10/100Mbps fast ethernet ports
- Compliant with IEEE 802.3 / IEEE 802.3u
- Auto-Negotiation, Auto-MDIX
- Provide 1K MAC address
- Store-and-Forward switching architecture
- Diagnostic LEDs
- Plug and Play



TE100-S55Eplus

5-Port 10/100Mbps Fast Ethernet Switch

- 5 x 10/100Mbps fast ethernet ports
- Compliant with IEEE 802.3 and IEEE 802.3u
- Auto-negotiation and auto-MDIX
- Full/Half duplex transfer mode for each port
- Store-and-Forward switching architecture
- 64KB RAM buffer and 1K MAC address
- Compact design and wall mountable
- Sturdy metal housing



TE100-S88Eplus

8-Port 10/100Mbps Fast Ethernet Switch

- 8 x 10/100Mbps fast ethernet ports
- Compliant with IEEE 802.3 and IEEE 803.2u
- Auto-negotiation and auto-MDIX
- Full/Half duplex transfer mode for each port
- Store-and-Forward switching architecture
- 96KB SRAM buffer and 1K MAC address
- Wall mountable
- Sturdy metal housing



TE100-S16Eplus

16-Port 10/100Mbps Fast Ethernet Switch

- 16 x 10/100Mbps fast ethernet ports
- Compliant with IEEE 802.3 and 802.3u
- Auto-negotiation and auto-MDIX
- Full/Half duplex transfer mode for each port
- Store-and-Forward switching architecture
- 512KB RAM buffer and 8K MAC address
- Wall mountable
- Sturdy metal housing

Coming Soon

TE100-S16R

16-Port 10/100Mbps Fast Ethernet Switch

TE100-S24R

24-Port 10/100Mbps Fast Ethernet Switch

Switches Comparison Chart

SNMP

Model	SNMP				
	TEG-S2400i	TEG-S2600i	TEG-S3000i	TE100-S800i	TE100-S810Fi
Product Description	24-port 10/100 SNMP Switch with Gigabit Module	24-port 10/100 SNMP Stackable Switch with 2 Gigabit or 2 Mini GBIC Slots	3-slot Gigabit Layer 2 Managed Chassis with Mini GBIC Slot	8-port 10/100 Layer 2 Managed Switch	8-port 10/100 Layer 2 Managed Switch with 100 Base-FX Port
10/100Mbps Port	24	24		8	8
10/100/1000Mbps Port		2			
Mini-GBIC Slots	1/0	0/2	0/1		
MAC addresses	14k	6k	8k	8k	8k
Queue Buffer memory/port	3MB	3MB	3MB	2M	2M
Management (web-based)	•	•	•	•	•
Port Mirroring				•	•
Port Trunking	•	•		•	•
Traffic Prioritization - 802.1p	•		•	•	•
RMON	1, 2, 3, 9	1, 2, 3, 9		•	•
SNMP	v1.0	v1.0		•	•
VLAN (# supported)	• (26 groups)	• (256 groups)	• (256 groups)	• (256 groups)	• (256 groups)

Web Smart

Model	WEB SMART					
	TEG-160WS	TEG-240WS	TPE-224WS	TEG224WS+	TEG-448WS	TEG-2248WS
Product Description	16-port Gigabit Web Smart Switch	24-port Gigabit Web Smart Switch	24-Port 10/100 Web Smart Switch Power Over Ethernet with 2 Gigabit Ports	24-port 10/100 Web Smart Switch with 2 Mini-GBIC Slots	48-port Gigabit Web Smart Switch with 4 Mini-GBIC Slots	48-port 10/100 Web Smart Switch with 2 Gigabit Ports, 2 Mini-GBIC Slots
10/100Mbps port			24	24		48
10/100/1000Mbps port	16	24	2		48	2
Mini-GBIC Slots				2	4	2
MAC addresses	8k	8k	4k	2k	8k	4k
Queue Buffer Memory/port	512KB	512KB	768KB	256KB	1024KB	1536KB
Management (web-based)	•	•	•	•	•	•
Port Mirroring	•	•	•	•		
Port Trunking	•	•	•	•	•	•
Traffic Prioritization - 802.1p	•	•		•		•
RMON						
SNMP						
VLAN (# supported)	•	•	•	•	•	• (28 groups)

Gigabit

Model	RACKMOUNT		DESKTOP		
	TEG-S160TX	TEG-S240TX	TEG-S224	TEG-S50TXE	TEG-S80TXE
Product Description	16-port Gigabit Rack Mount Switch	24-port Gigabit Rack Mount Switch	24-port 10/100 Rack Mount Switch with 2 Gigabit Ports	5-port Gigabit Mini Switch	8-port Gigabit Mini Switch
10/100Mbps port			24		
10/100/1000Mbps port	16	24	2	5	8
Mini-GBIC Slots					
MAC addresses	8k	8k	8k	8k	8k
Queue Buffer Memory/port	340KB	500KB	2.5MB	112KB	144KB

Fast Ethernet

Model	FAST ETHERNET						
	TE100-S5	TE100-S8	TE100-S55E+	TE100-S88E+	TE100-S16E+	TE100-S16	TE100-S24
Product Description	5-Port 10/100Mbps Fast Ethernet Switch	8-Port 10/100Mbps Fast Ethernet Switch	5-port 10/100 Mini Switch (Metal Case)	8-port 10/100 Mini Switch (Metal Case)	16-port 10/100 Mini Switch (Metal Case)	16-port 10/100 Rack Mount Switch (Metal Case)	24-port 10/100 Rack Mount Switch (Metal Case)
10/100Mbps port	5	8	5	8	16	16	24
MAC addresses	1k	1k	1k	2k	8k	8k	8k



TFC-1600
16-Slot Chassis System for Fiber Converter

- Provides housing for up to 16 TFC series media converters
- SNMP (v1.0, MIB II), Telnet and web browser
- Optional redundant power supply with load sharing capability
- Power isolation designed with converter bays
- Dual cooling fans



TFC-1000
10-Slot Chassis System for Fiber Converter

- Provides housing for up to 10 TFC-210 or TFC-2000 series media converters
- Single cooling fan (internal) mounted at the rear panel
- Power isolation designed with converter bays: ensures each bay is electrically isolated from others
- Diagnostic LEDs
- Hot-swappable
- 19" (2U) rack mount design



TEG-GBSX
Multi-Mode GBIC Module

- Compliant with gigabit interface converter, fiber channel and SONET/SDH
- Industry standard GBIC package
- Duplex SC connector
- Up to 1.25Gbps bi-directional data links
- Full metallic enclosure for low EMI
- Hot pluggable



TFC-1000MSC
1000Base-TX to 1000Base-SX SC-Type Fiber Converter

- Compliant with IEEE 802.3ab 1000Base-T, IEEE 802.3z 1000Base-SX/LX gigabit ethernet
- Provides one 1000Base-T port, one 1000Base-SX/LX port
- Support full-duplex and auto-negotiation mode for fiber port
- Provide dip switch to settings: fiber (Auto/Manual), LLR (Enable/Disable)
- Hot pluggable and wall mountable
- Module for TFC-1600



TFC-2000S20
1000Mbps-TX to 100Mbps-LX SC Fiber Module

- Compliant with IEEE 1000Base-T and 1000Base-LX
- One 1000Base-T auto-MDIX RJ-45 port
- One 1000Base-LX fiber port with single-mode SC-type connector
- Supports LLF (Link Loss Forwarding) for TX and SX port
- Hot pluggable and wall-mountable
- Module for TFC-1000



TEG-MGBSX
Multi-Mode Mini GBIC Module

- Compliant with IEEE 802.3z gigabit ethernet and fiber channel standards
- Industry standard SFP package
- Duplex LC connector
- Up to 2.125Gbps bi-directional data links
- Die cast metal housing for low EMI
- Hot pluggable



TFC-110MSC
10/100Base-TX to 100Base-FX SC-Type Multi-Mode Fiber Converter

- Compliant with IEEE 802.3 and IEEE 802.3u
- One 10/100Base-TX auto-negotiation and auto-MDIX with RJ-45 port
- One 100Base-FX multi-mode fiber optic with SC or ST connector
- Hot pluggable and wall mountable
- Module for TFC-1600



TFC-210MST
10/100Mbps-TX to 100Mbps-SX ST Fiber Module Multi-Mode Fiber Converter

- Compliant with IEEE 802.3 10Base-T and IEEE 802.3u 100Base-TX, 100Base-FX standards
- One 10/100Base-TX auto-negotiation and auto-MDIX RJ-45 port
- One 100Base-FX fiber port with multi-mode ST-Type connector
- Hot pluggable and wall-mountable
- Module for TFC-1000

Fiber Comparison Chart

Model	DESCRIPTION	MEDIA TYPE		DISTANCE
Chassis				
TFC-1600	16-slot Chassis System for Fiber Converter	N/A		N/A
Fiber Converters for TFC-1600				
TFC-110MSC	10/100Base-TX to 100Base-FX Multi-Mode Fiber	SC		2km/1.2mi
TFC-110MST	10/100Base-TX to 100Base-FX Multi-Mode Fiber	ST		2km/1.2mi
TFC-110MM	10/100Base-TX to 100Base-FX Multi-Mode Fiber	MT-RJ		2km/1.2mi
TFC-110S15	10/100Base-TX to 100Base-FX Single-Mode Fiber	SC		15km/9.3mi
TFC-110S15i / 30i/60i	Intelligent 10/100Base-TX to 100Base-FX Single-Mode Fiber	SC		15km/9.3mi
TFC-110S30	10/100Base-TX to 100Base-FX Single-Mode Fiber	SC		30km/18.6mi
TFC-110S60	10/100Base-TX to 100Base-FX Single-Mode Fiber	SC		60km/37.3mi
TFC-110S100	10/100Base-TX to 100Base-FX Single-Mode Fiber	SC		100km/62.1mi
TFC-110S20D3	10/100Mbps TX to 100Base-FX Dual-Wavelength Single-Mode Fiber Converter	SC		20km/12.4mi
TFC-110S20D5	10/100Mbps TX to 100Base-FX Dual-Wavelength Single-Mode Fiber Converter	SC		20km/12.4mi
TFC-1000MSC	Intelligent 1000Base-T to 1000Base-SX Multi-Mode Fiber	50/125µm	SC	550m/0.34mi
		62.5/125µm	SC	220m/0.14mi
TFC-1000S20	Intelligent 1000Base-T to 1000Base-LX Single-Mode Fiber	SC		20km/12.4mi
TFC-1000S50	Intelligent 1000Base-T to 1000Base-LX Single-Mode Fiber	SC		50km/31.1mi
TFC-1000S70	Intelligent 1000Base-T to 1000Base-LX Single Mode Fiber Converter	SC		70km/43.5mi
TFC-15MS100	100Base FX to 100Base-FX Single-Mode Fiber	SC		15km/9.3mi
TFC-1600MM	Media Converter Management Module	N/A		N/A
TFC-1600RP	Media Converter Chassis Redundant Power Supply	N/A		N/A
Chassis				
TFC-1000	10-Slot Chassis System for Fiber Converter	SC		100km/62.1mi
Fiber Converters for TFC-1000				
TFC-210MSC	10/100Mbps-TX to 100Mbps-SX SC Fiber Module (for TFC-1000)	SC		2km/1.2mi
TFC-210MST	10/100Mbps-TX to 100Mbps-SX ST Fiber Module (for TFC-1000)	ST		2km/1.2mi
TFC-210S20D3/D5	10/100Mbps-TX to 100Mbps-LX WDM SC Fiber Module 20km (pair) (for TFC-1000)	SC		20km/12.4mi
TFC-210S30	10/100Mbps-TX to 100Mbps-LX SC Fiber Module 30km (for TFC-1000)	SC		30km/18.6mi
TFC-2000MSC	1000Mbps-TX to 1000Mbps-SX SC Fiber Module (for TFC-1000)	SC		550m/0.34mi
TFC-2000S10D3/D5	1000Mbps-TX to 1000Mbps-LX WDM SC Fiber Module 10km (pair) (for TFC-1000)	SC		10km/6.2mi
TFC-2000S20	1000Mbps-TX to 1000Mbps-LX SC Fiber Module 20km (for TFC-1000)	SC		20km/12.4mi
TFC-2000S40	1000Mbps-TX to 1000Mbps-LX SC Fiber Module 40km (for TFC-1000)	SC		40km/25mi
GBIC Modules				
TEG-GBSX	1000Base-SX Multi Mode Fiber GBIC Module	50/125µm	SC	550m/0.34mi
		62.5/125µm	SC	220m/0.14mi
TEG-GBS10	1000Base-LX Single Mode Fiber GBIC Module	SC		10km/6.2mi
TEG-GBS30	1000Base-LX Single Mode Fiber GBIC Module	SC		30km/18.6mi
TEG-GBS40	1000Mbps-LX GBIC Module 40km	LC		40km/25mi
TEG-GBS80	1000Mbps-LX GBIC Module 80km	LC		80km/50mi
Mini-GBIC Modules				
TEG-MGBSX	1000Base-SX Multi Mode Fiber Mini-GBIC Module	LC		550m/0.34mi
TEG-MGBS10	1000Bas-LX Single Mode Fiber Mini-GBIC Module	LC		10km/6.2mi
TEG-MGBS30	1000Base-LX Single Mode Fiber Mini-GBIC Module	LC		30km/18.6mi
TEG-MGBS40	1000Mbps-LX Min-GBIC Module 40km	LC		40km/25mi
TEG-MGBS80	1000Mbps-LX Min-GBIC Module 80km	LC		80km/50mi
TEG-MGBS10D35	1000Mbps-LX Min-GBIC WDM Module 10km (pair)	LC		10km/6.2mi
TEG-MGBS40D35	1000Mbps-LX Min-GBIC WDM Module 40km (pair)	LC		40km/25mi



Power over Ethernet



TRENDnet's Power over Ethernet (PoE) products provide the convenience and reliability of transmitting both power and data over a standard Ethernet cable. Freely implement access points, security cameras or a VoIP system regardless of power outlet availability or accessibility. Whether you have legacy or PoE compatible products TRENDnet has the tools to extend power to the edge of your network using a PoE splitter, injector, IP Camera and Web Smart Switch solutions.

Key Features

- Deliver power and data over Ethernet cable
- Position wireless access points, VoIP phones and IP Cameras anywhere
- Family includes PoE splitter and injector to enable any non-PoE device
- IEEE 802.3af PoE compliant
- Fast ethernet and gigabit web-smart PoE switches
- 5-year warranty



TPE-1011
Power over Ethernet (PoE) Injector

- Reduce cabling for wireless APs, IP camera and any IEEE 802.3af powered device
- Supports PoE power up to 15.4 watts for each PoE port
- Advanced auto-sensing algorithm enables power from 802.3af PSE
- High safety standards with short circuit protection
- Auto disconnection for over voltage or under voltage situation



TPE-1025
Power over Ethernet (PoE) Splitter

- Converts non-PoE devices with Power over Ethernet Support
- Advanced auto-sensing algorithm enables power from 802.3af PSE
- High safety standards with short circuit protection
- Supports power detection and classification
- Auto disconnection for over voltage or under voltage situation



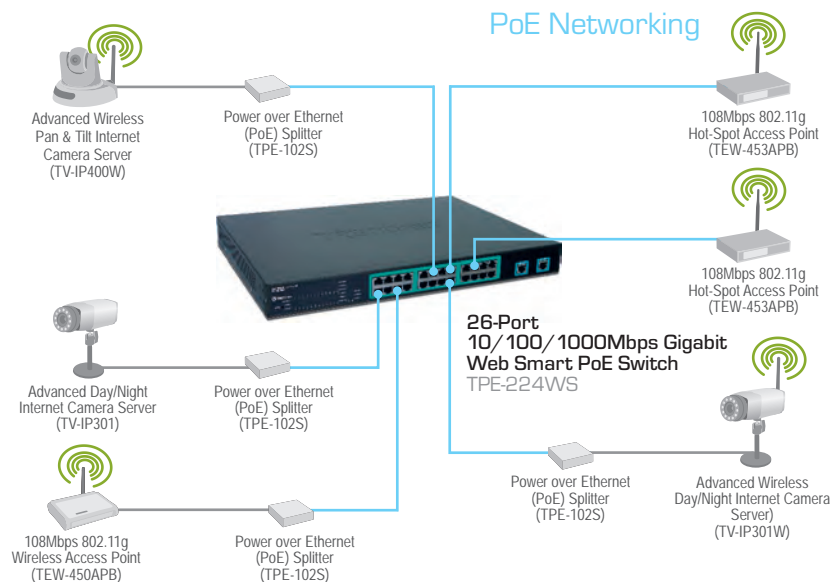
TPE-S88
16-port Web Smart Power over Ethernet (PoE) Switch

- 16 x 10/100Mbps auto-negotiation and auto-MDIX fast ethernet RJ45 ports
- Built-in 8 PoE ports, maximum power 15.4 watts for each port
- 802.1 VLAN, port-based QoS, and IEEE 802.1p QoS
- Port-based trunking and port mirroring
- 19" (1U) rack mount design



TPE-224WS
24-port Web Smart Power over Ethernet (PoE) Switch

- IEEE 802.3af Power over Ethernet (PoE) standard compliant
- 24 x 10/100Mbps auto-negotiation and auto-MDIX fast ethernet PoE RJ-45 ports
- 2 x 10/100/1000Mbps Auto-Negotiation and auto-MDIX Gigabit ports
- Port-based VLAN, trunking and port mirroring
- 19" (1U) rack mount design



Power + Ethernet Data



Internet Cameras



TRENDnet's line of IP Cameras provide remote monitoring 24 hours a day using a standard web browser. High-powered day and night cameras, water proof units and advanced pan and tilt models, provide a range of solutions to meet any security or surveillance need. Whether it is improving employee productivity or limiting potential theft, TRENDnet's cameras can easily capture, record and view real-time high quality video for even the most remote locations.

Key Features

- Wired and wireless 802.11b/g cameras for indoor or outdoor installation
- IR lenses for day/night vision surveillance
- Advanced pan and tilt with 4x digital zoom
- Live video and audio remote access via web browser
- Includes software for multiple camera image capturing, video and audio recording
- 3-year warranty



TV-IP100
Internet Camera Server

- Multiple camera monitoring, image capturing and video recording
- Supports TCP/IP networking, SMTP email, HTTP and other Internet related protocols
- Web browser remote access for live image viewing
- Web configuration with password protection
- 4x digital zoom



TV-IP100W
Wireless Internet Camera Server

- Wi-Fi compliant with IEEE 802.11b/g devices
- Wireless supports infrastructure and ad-hoc modes
- Multiple camera monitoring, image capturing and video recording
- Web browser remote access for live image viewing
- 128-bit WEP encryption, WPA-PSK



TV-IP201
Internet Camera Server with Audio

- Built-in pan and tilt control (additional equipment required)
- Supports M-JPEG compression and audio monitoring
- 10/100Mbps fast ethernet network
- Supports TCP/IP networking, SMTP e-mail, HTTP and other Internet related protocols



TV-IP201W
Wireless Internet Camera Server with Audio

- Wi-Fi compliant with IEEE 802.11b/g
- Multiple camera monitoring, image capturing and video recording
- Supports M-JPEG compression and audio monitoring
- Wireless supports infrastructure and ad-hoc modes
- Web configuration with password protection



TV-IP301
Day/Night Internet Camera Server with Audio

- Multiple camera monitoring, image capturing and video recording
- Supports M-JPEG compression and audio monitoring
- Equipped with IR Lens (10m) for day and night vision
- Progressive Scan
- Supports three adjustable motion detection windows
- 128-bit WEP and WPA-PSK encryption



TV-IP301W
Wireless Day/Night Internet Camera Server with Audio

- Wi-Fi compliant with IEEE 802.11b/g
- Supports M-JPEG compression and audio monitoring
- Equipped with IR lens (10m) for day and night vision
- Progressive Scan
- Supports TCP/IP networking, SMTP e-mail, HTTP and other Internet related protocols
- 128-bit WEP and WPA-PSK encryption



TV-IP400
Advanced Pan/Tilt Internet Camera Server

- Built-in pan and tilt control
- Multiple camera monitoring, image capturing and video recording
- Supports TCP/IP networking, SMTP e-mail, HTTP and other Internet related protocols
- Web browser remote access for live image viewing
- Web configuration with password protection
- Works with various operating systems (Windows and MAC)



TV-IP400W
Advanced Pan and Tilt Wireless Internet Camera Server

- Built-in pan and tilt control
- Wi-Fi compliant with IEEE 802.11b/g devices
- Wireless supports infrastructure and ad-hoc modes
- Supports TCP/IP networking, SMTP e-mail, HTTP and other Internet related protocols
- Web browser remote access for live image viewing
- 128-bit WEP encryption
- 4x digital zoom



EL-HS800
Outdoor Dome Housing with Fan/Heater

- Weather resistant IP66 protection certified
- Protects most indoor and outdoor PTZ (Pan/Tilt/Zoom) cameras
- Built-in heater and fan for extreme operating conditions
- Anti tamper protection for cabling
- Steel construction ensures durability
- Ceiling or wall mountable
- Compatible cameras: TV-IP400/400W



15-AH25B
Outdoor Camera Housing

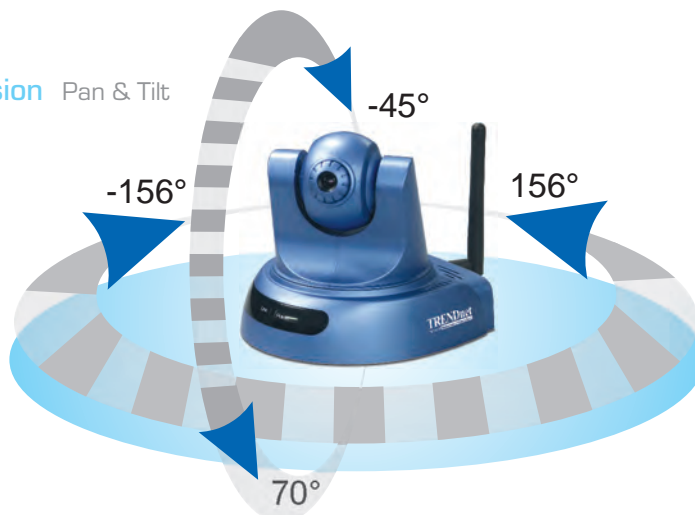
- Protects from extreme weather and outdoor elements
- Anti tamper protection for cabling
- Steel construction ensures durability
- Easy access flip open top
- Cable management ready
- Compatible cameras: TV-IP100/100W, TV-IP201/201W, TV-IP301/301W



15-AH28B
Outdoor Camera Housing with Fan/Heater

- Built-in heater and fan for extreme operating conditions
- Anti tamper protection for cabling
- Steel construction ensures durability
- Power transformer inside
- Accept AC24V, 110V (for US version) or 220V (for EU version) input
- Compatible cameras: TV-IP100/100W, TV-IP201/201W, TV-IP301/301W

Complete Vision Pan & Tilt



Coming Soon

TV-IP202
PoE Internet Camera Server

TV-IP211
Outdoor Internet Camera Server

TV-IP211W
Outdoor Wireless Internet Camera Server



KVM



TRENDnet offers a complete selection of KVM switches with multi-port PS/2 and USB models, audio/microphone and advanced DVI support. With audio enabled switches users can bridge the multimedia divide and share once isolated high-end speakers and microphones across all network computers.

Key Features

- Complete line of multi-port PS/2 and USB switches
- Remote access with IP switches and extender solutions
- Multimedia audio and microphone support
- Hot-Key, Auto-Scan and Hot Plug features
- High resolution support up to 2048 x 1536 VGA
- 2-year warranty

KVM Switches



TK-200K
2-Port KVM Switch Kit

- 2-port KVM switch in compact size
- Includes two high-grade KVM cables (1.8m/6ft)
- Supports high quality video, up to 1920 x 1440
- Keyboard status restored when switching between units



TK-205K
2-Port PS2 KVM Switch Kit

- 2-port KVM switch with two 3 to 1 KVM cables
- PS/2 keyboard/mouse emulation
- Supports up to 2048 x 1536 VGA or 800 x 600 SVGA resolution
- Keyboard status restored when switching between units



TK-207K
2-Port USB KVM Switch

- 2-Port USB 1.1 hub for sharing USB devices
- Includes two sets of KVM cables
- Supports high quality video, up to 2048 x 1536
- Multi-platform support for PC and Macintosh
- USB interface power method



TK-208K
2-Port PS2 KVM Switch Kit with Audio

- 2-port PS/2 KVM switch with 1 port microphone/speaker
- Two PS/2 KVM and audio/microphone cables
- Supports up to 2048 x 1536 VGA or 800 x 600 SVGA resolution
- Hot-Key functionality for easy PC selection
- Auto-Scan mode for continuous monitoring



TK-209K
2-Port USB KVM Switch Kit with Audio

- 2-port USB KVM switch with 1-port microphone/speaker
- Two USB KVM and audio/microphone cables
- Supports up to 2048 x 1536 VGA resolution
- Multi-platform supports PC and Macintosh
- Hot-Key functionality for easy computer selection
- Auto-Scan mode for continuous monitoring
- USB Interface power method



TK-210K
2-Port USB/KVM Switch with Audio

- Compact 2-port KVM switch
- Built-in 2-port USB 1.1 hub for sharing USB devices
- Includes two USB, KVM and audio/microphone cables
- High quality video, up to 1920 x 1440
- Multi-platform support for PC and Macintosh



TK-400K
4-Port KVM Switch Kit

- Compact 4-port KVM switch
- Includes four high-grade PS/2 KVM cables
- High quality video, up to 1920 x 1440
- Keyboard status restored when switching between units



TK-401R
4-Port KVM Rack Mount Switch

- 4-port KVM switch
- PS/2 keyboard/mouse emulation
- High quality video, up to 1920 x 1440
- Hot-Key functionality for easy PC selection
- Keyboard status restored when switching between units
- 19" rack mount kit included



TK-403KR
4-Port KVM Audio Rack Mount Switch

- 4-port PS/2 KVM Switch with audio and microphone switching
- Additional advanced support for Logitech wired/wireless/optical mice
- High quality video, up to 2048 x 1536
- Hot-Key functionality for easy PC selection
- 19" rack mount kit included



TK-407K
4-Port USB KVM Switch

- 4-port USB KVM switch
- USB keyboard/mouse emulation with 4 sets of detachable KVM cables
- High video quality, up to 2048 x 1536 VGA resolution
- Multi-platform support for PC and Macintosh
- Hot-Key functionality for easy PC selection
- USB interface power method



TK-408K
4-Port PS/2 KVM Switch with Audio

- 4-port PS/2 KVM switch with 1 port microphone/speaker
- Includes four PS/2, VGA and audio/microphone cables
- High quality video, up to 2048 x 1536
- Hot-Key functionality for easy PC selection



TK-409K
4-Port USB KVM Switch Kit with Audio

- 4-port USB KVM switch with 1 microphone/speaker port
- 4 sets of USB KVM and audio/microphone cables
- Supports up to 2048 x 1536 VGA resolution
- Multi-platform supports PC and Macintosh
- Hot-Key functionality for easy computer selection
- USB interface power method



TK-801R
8-Port KVM Rack Mount Switch

- 8-port KVM switch
- PS/2 keyboard/mouse emulation
- High quality video, up to 1920 x 1440
- Hot-Key functionality for easy PC selection
- Keyboard status restored when switching PCs
- 19" rack mount kit included



TK-802R
8-Port KVM Rack Mount Switch with OSD

- 8-port KVM switch
- Stack up to 16 units to control a maximum of 128 PCs
- Supports high quality video, up to 1920 x 1440
- Hot-Key functionality for easy PC selection
- Auto-detect bank number (when daisy-chaining)
- Built-in daisy-chain port (cable included)
- 19" rack mount kit included



TK-803R
8-port Rack Mount USB KVM Switch

- 8-Port USB KVM switch
- Supports both USB and PS/2 interface
- High quality video, up to 2048 x 1536
- Hot-key functionality for easy PC selection
- 19" rack mount kit included



TK-1601R
16-Port KVM Rack Mount Switch

- 16-port KVM switch
- Supports high quality video, up to 1920 x 1440
- PS/2 keyboard/mouse emulation
- Hot-key functionality for easy PC selection
- Auto-Scan mode for continuous monitoring
- Keyboard status restored when switching between units
- 19" rack mount kit included



TK-1602R
16-Port KVM Rack Mount Switch with OSD

- Supports stacking up to 16 daisy-chain levels with TK-802R or TK-1602R
- Supports high quality video, up to 1920 x 1440
- Hot-key functionality for easy PC selection
- Auto-Scan mode for continuous monitoring
- Auto detect bank number (when daisy chaining)
- Supports 8 character password protection



TK-1603R
16-port Rack Mount USB KVM Switch

- 16-Port USB KVM switch
- Supports both USB and PS/2 interface
- High quality video, up to 2048 x 1536
- Hot-key functionality for easy PC selection
- 19" rack mount kit included



TK-204K
2-port KVM DVI Rack Mount Switch

- 2-port DVI, PS/2 audio KVM switch with enhanced digital video support
- Share audio and microphone between multimedia PCs
- Compatible with DVI-I (Digital & Analog)
- Compatible with DVI-D (digital only) connector
- High quality video, up to 1600 x 1200
- Hot-key functionality for easy PC selection
- 19" rack mount kit included



TK-404KR
4-Port KVM DVI Rack Mount Switch Kit

- 4-port DVI PS/2 and audio KVM switch
- DVI-I (digital & analog) for pure digital video signal transmission
- Share audio and microphone between multimedia PCs
- Compatible with DVI-D (Digital Only) connector
- High quality video, up to 1600 x 1200
- 19" rack mount kit included



TK-EX2
Cat5 KVM Extension Kit

- Works with standard 3-in-1 KVM switch cable
- Supports PC using KVM switch's console port or PC port
- Extends keyboard, mouse and monitor distances up to 152m (500ft.)
- Displays crisp 1280 x 1024 VGA resolution
- Provides local and remote console ports for dual simultaneous access
- Compliant with Cat5, Cat5E or Cat6 ethernet cable
- No driver or software required



TK-IP101
1-Port KVM over IP Switch

- Provides remote control for several servers when connected to a conventional KVM switch
- Web management interface for all settings and upgrade/backup features
- Ultra-security using full 1024-bit PKI authentication and 256-bit SSL encryption
- Support Telnet session and FTP service (disabled by default for security)
- Win-32 viewer and Java viewer for cross-platform compatibility
- High-speed PPP connection up to 1Mbps over RS-232
- Support up to 1600 x 1200 at 60Hz resolution
- Remote power on-off control over serial interface



TK-V200S
2-Port Video Splitter

- Broadcasts real-time video to multiple display locations
- Supports ultra high 350MHz video (-3dB) bandwidth
- Extends video signal up to 65m (210ft.)
- Daisy chainable for easy video splitter expansion
- Utilizes standard monitor extension cables
- Hassle free – no software required
- Metal casing



TK-V400S
4-Port Video Splitter

- Broadcasts real-time video to multiple display locations
- Supports ultra high 350MHz video (-3dB) bandwidth
- Extends video signal up to 65m (210ft.)
- Supports VGA, SVGA, XGA and multi-synchronization monitors
- Utilizes standard monitor extension cables
- Hassle free – no software required
- Metal casing



Modems



Only TRENDnet Modems can deliver the quick connection speeds and reliability that small businesses and home users demand. A wide variety of models are available from modem/firewall routers with NAT and SPI security, to models that support the latest in ADSL, ADSL2 and ADSL2+ protocols. For users looking to enhance a dial-up connection, experience the difference with 48Kbps upload rate, Quick Connect for 50% faster dial-up time and a Modem on Hold feature that enables incoming calls with no connection interference.

Key Features

- ADSL, ADSL2 and ADSL2+ modems and combo routers
- V.90 and V.92 standard compliant
- High speed 56Kbps download capability
- PCM upstream for maximum upload speed of 48Kbps
- Worldwide country support
- Up to 5-year warranty



TFM-560X
56K External Voice/Fax Modem

- V.90 56Kbps data download
- High speed 56Kbps data and 14.4Kbps fax communication
- Telephony answering machine with full-duplex speakerphone



TFM-PCIV92A
V.92 Internal PCI Fax Modem/Agere Chipset

- Compliant with V.92, V.90, V.44 standards
- Quick connect, PCM upstream and modem on hold features
- Up to 56Kbps data download, 48Kbps data upload
- 3-year warranty



TFM-560U
56K USB Fax Modem

- V.90 56Kbps data download
- High speed 56Kbps data and 14.4Kbps fax communication
- Worldwide country support



TEW-435BRM
Wireless ADSL Modem Firewall Router

- Wi-Fi compliant with IEEE 802.11b/g
- Compliant with ADSL, ADSL2, ADSL2+
- Operates as dual router and modem
- Traffic control with virtual server and DMZ
- Double firewall protection NAT and SPI
- Supports multiple and concurrent VPN pass-through sessions
- Net meeting, PING, Telnet and more
- 3-year warranty



TW100-BRM504
ADSL Modem 4-port Firewall Router

- Supports router (router+modem) or modem (modem only) mode
- Compliant with ADSL, ADSL2, ADSL2+
- Double firewall protection NAT and SPI
- Supports multiple and concurrent VPN pass-through sessions
- Real-time email alert and logs



TDM-C400
ADSL/ADSL2+ Ethernet / USB Combo Modem Router

- Compliant with G.992.1, G.992.2 and ANSI T1.413
- Compliant with ADSL2 and ADSL2+
- 1 x 10/100 fast ethernet port and 1 USB 1.1 port
- Supports networking protocols such as PPP, IP routing, NAT, relay/client
- Supports configuration and management through Web, Telnet or SNMP



Medianet



TRENDnet offers a complete line of PC connectivity products that help users easily connect and share their PC peripherals. With TRENDnet's line of converters, users can consolidate and transform legacy peripherals into USB-based technology. TRENDnet's Medianet connectivity products help bridge the connectivity gap that often exists between peripherals and the PC.

Key Features

- Complete line of connectivity solutions for connecting PC peripherals
- USB and Firewire multi-port hubs, converters and adapters
- All-in-One PCMCIA and USB memory readers for flash storage disks
- USB and Firewire hubs support up to 127 USB and 63 Firewire devices
- Hubs provide fast transfer rates up to 480Mbps
- Supports multiple OS environments

USB



TU2-400
4-Port High Speed USB 2.0 Hub

- Compliant with USB 2.0 and 1.1
- Supports full (12Mbps) and low-speed (1.5Mbps)
- Automatically adjusts to peripheral's highest supported speed
- Supports up to 127 USB devices
- One USB A-B cable included (60cm/2ft.)
- 2-year warranty

* Also available in TU-400E 4-port USB hub



TU2-700
7-Port High Speed USB 2.0 Hub

- Compliant with USB 2.0 and 1.1
- Supports all USB speeds: 480Mbps, 12Mbps, 1.5Mbps
- Automatically adjusts to peripheral's highest supported speed
- One USB A-B cable included (60cm/2ft.)
- 2-year warranty



TU2-ETG
USB 2.0 Gigabit Ethernet Adapter

- Built-in 1 upstream USB plug
- Built-in 1 10/100/1000Mbps fast ethernet port
- Compliant with USB 2.0, 1.1 and 1.0
- ANSI/IEEE 802.3 auto-negotiation
- 5-year warranty



TU2-ET100
USB 2.0 to 10/100Mbps Fast Ethernet Adapter

- Compliant with USB 2.0 and 1.1 specifications
- Compliant with IEEE 802.3, 802.3u standards
- Supports BUS-Power, no external power adapter required
- Diagnostic LEDs
- 5-year warranty



TMR-61U2
USB 2.0 6-in-1 Memory Card

- Compliant with hi-speed USB 2.0 and 1.1
- Reads/writes up to 4 different types of memory cards simultaneously
- Supports all USB speeds: 480Mbps, 12Mbps, 1.5Mbps
- Portable compact design and no external power adapter required
- 2-year warranty

* Requires Additional Converter Adapter



TU2-IDSA
USB 2.0 to SATA/IDE Converter

- Compliant with USB 2.0 and SATA (Serial ATA) 1.0a specifications
- Supports combo connectors IDE (40pin & 44pin) for 2.5" / 3.5" / 5.5" IDE & SATA devices
- Operates IDE and SATA devices simultaneously
- 2-year warranty

USB



TU2-H5PI

5-port USB 2.0 Host PCI Adapter

- 4 x external type A USB 2.0 ports
- 1 x internal type A USB 2.0 port
- Full forward and backward compatible with USB 1.1
- 32-bit 33Mhz host interface compliant to PCI specification 2.2
- 2-year warranty



TU2-EX5

USB 2.0 Extension Cable

- Compliant with USB 2.0 and 1.1 (type A)
- Fully forward and backward compatible with USB 1.1
- Supports all USB speeds: 480Mbps, 12Mbps, 1.5Mbps
- Supports up to 5 USB extender cables
- 2-year warranty



TU-PS2

USB to PS/2 Converter

- Compliant with USB 1.1 and 1.0
- Converts two PS/2 devices simultaneously (keyboard and mouse) to USB interface
- Supports data transfer rates up to 12Mbps speed
- Supports bus power, no external power adapter required
- 2-year warranty



TU-P1284

USB to Parallel 1284 Converter

- Compliant with USB 1.1
- Compliant with IEEE 1284 (bi-directional parallel) interface
- Supports suspend/normal power management modes
- Supports data transfer rates up to 12Mbps speed
- 2-year warranty



TU-S9

USB to Serial Converter

- Compliant with USB 1.1
- RS-232 serial interface
- Supports data transfer rates up to 500kbps
- Supports bus power, no external power adapter required
- 2-year warranty



TU-P1W

2.4GHz Wireless Presenter

- Controls PowerPoint presentations and Windows Media Player wirelessly
- Built-in laser pointer and mouse control
- Touch buttons to control pages, volume, play or pause
- Distance up to 15m (49ft.)
- Compliant with 2.4GHz radio frequency

FIREWIRE



TFU-430

7-Port USB 2.0/FireWire Combo Hub

- Compliant with USB 2.0, 1.1 and Firewire IEEE 1394 specifications
- Provides high speed data transfer rates up to 400Mbps
- Supports IEEE 1394 transfer rates up to 400Mbps
- Supports USB over-current detection and individual/gang power control
- Supports multiple tiers with up to 127 USB devices and up to 63 Firewire devices
- Supports bus-power or cable-power with power adapter
- Compatible with Windows 98SE/ME/2000/XP



TFW-H2PC

2-Port FireWire Host PC Card

- 2 x IEEE 1394 Firewire ports, compliant with IEEE1394A
- Forward and backward compatible with IEEE 1394-1395
- 32-bit CardBus PCMCIA type II slot compatible
- Provides high speed data transfer rates up to 400Mbps
- Supports up to 63 Firewire devices
- Provides software interrupt control
- Compatible with Windows 98(SE)/ME/2000/XP operating systems



TFW-H3PI

3-Port FireWire Host PCI Adapter

- 3 x IEEE 1394 Firewire ports, compliant with IEEE1394A
- 3 x USB 2.0 type A ports, compliant with USB 2.0 and 1.1
- 32-bit 33Mhz host interface compliant with PCI specification 2.2
- Provides high speed USB data transfer rates up to 480Mbps
- Provides high speed Firewire data transfer rates up to 400Mbps
- Supports multiple tiers with up to 127 USB devices and 63 Firewire devices
- Compatible with Windows 98(SE)/ME/2000/XP operating systems



Network Accessories



TRENDnet is your complete networking solutions provider from wireless to wired, fiber to copper, even down to the tools that bring it all together. No networking upgrades or upkeep would be complete without TRENDnet's cable altering tools, network cable tester or patch panels. Available in 16, 24, 48 port panels with Cat5, Cat 5E and Cat6 compatibility, TRENDnet patch panels prepare you for future bandwidth additions and re-cabling.

Key Features

- Durable and efficient time-saving networking tools
- Ergonomically designed for comfortable handling
- Network cable testers analyze up to 300 meters (984 feet) of cable
- Includes adapters and value added accessories
- 1-year warranty



TC-NT2
Network Cable Tester

- Tests pin configuration of 10/100/1000Base-T, 10Base-2 (coax), RJ-11/RJ-12/RJ-45, EIA/TIA-356A/568A/568B and token ring cables
- Tests USB and IEEE 1394 cables with optional adapters
- Tests the grounding on shielded (screened) cable
- Verifies cable continuity, opens, shorts and miswires
- Tests cable up to 300m (984ft)
- Includes deluxe carrying pouch, two RJ-45-to-BNC adapters and RJ-45 patch cable



TC-CT68
RJ-11/RJ-45 Crimp/Cut/Strip Tool

- Cut and strip flat cable by one operation
- Functions for 8P/RJ-45 and 6P/RJ-12, RJ-11
- All steel construction for long term durability
- Crimps two sizes of plugs
- Built-in cutter and stripper
- Precision ground
- Ratchet mechanism to keep tool closed when not in use



TC-PDT
Punch Down Tool with 110 and Krone Blade

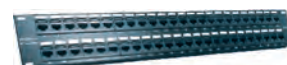
- Comfortable shape, easy to handle
- Interchangeable and reversible blades
- Safe storage for spare blade
- Twist and lock style holder provides fast, easy blade changes and prevents blade pullout



TC-P16C5E
Cat5/5e 16-port Unshielded Patch Panel



TC-P24C5E
Cat5/5e 24-port Unshielded Patch Panel



TC-P48C5E
Cat5/5e 48-port Unshielded Patch Panel



TC-P16C6
Cat6 16-port Unshielded Patch Panel



TC-P24C6
Cat6 24-port Unshielded Patch Panel



TC-P48C6
Cat6 48-port Unshielded Patch Panel

TRENDnet Technical Support



US · Canada

Toll Free Telephone: 1(866) 845-3673

24/7 Tech Support

Europe (Germany · France · Spain · Switzerland · UK)

Toll Free Telephone: +00800 60 76 76 67

English/Español - 24/7

Français/Deutsch - 11am-8pm, Monday - Friday (MET)

Worldwide

Telephone: +(31) (0) 20 504 05 35

English/Español - 24/7

Français/Deutsch - 11am-8pm, Monday - Friday (MET)

Email: support@trendnet.com



All models for Europe are RoHS and WEEE compliant.



Waste electrical and electronic products must not be disposed of with household waste. Please recycle where facilities exist. Check with your Local Authority or Retailer for recycling advice.



TRENDnet[®]
20675 Manhattan Place
Torrance, CA 90501 USA
www.trendnet.com