

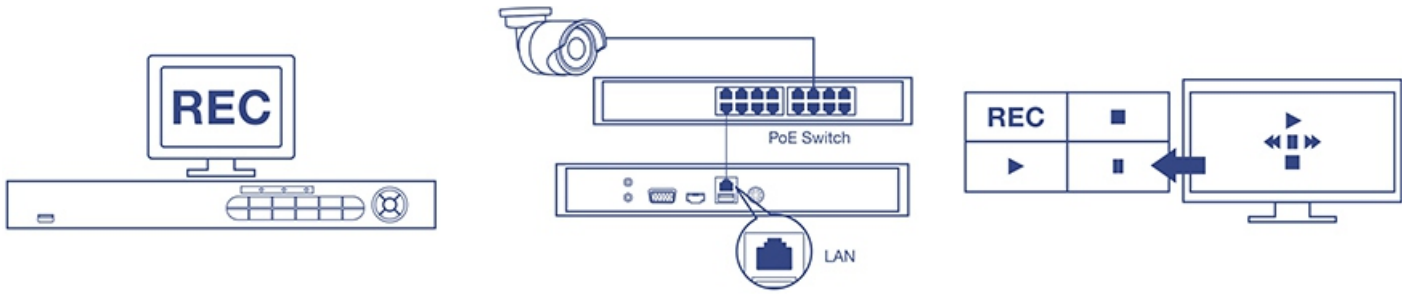


16-Channel HD NVR

TV-NVR2216 (v1.0R)

- Standalone 16-Channel network video recorder
- Manage up to 16 TRENDnet cameras*
- Concurrent 1080p HD video recording for all channels
- Two 3.5" SATA II bays support up to 12 TB of storage (HDDs not included)**
- Continuous or event-based 1080p HD recording***
- Advanced video playback
- Rack mountable
- Supports ONVIF compliant network camera

TRENDnet's standalone 16-Channel HD NVR, model TV-NVR2216, offers a comprehensive rack mountable video display, storage, and management solution. The NVR networks up to sixteen cameras* and auto-recognizes TRENDnet models. Install up to 12 TB of storage (hard drives not included)** to record continuous or event-based video from sixteen HD cameras***. The TV-NVR2216 features advanced video playback with free iOS® and Android™ apps.



Standalone 1080p HD NVR

This 1080p HD NVR supports up to a 12 TB hard drive and networks up to eight network cameras-hard drive, cameras, and display sold separately.

Easy Installation

The NVR auto-recognizes TRENDnet cameras* - simply connect compatible TRENDnet cameras and start recording surveillance video.

Intuitive Interface

Users will find the management interface intuitive and easy to use – quickly navigate live view preferences, recording schedules, and advanced playback options.

Networking Solution



- 1 USB 2.0
- 2 LED indicators
- 3 Push button control
- 4 Navigation button
- 5 Audio in
- 6 Audio out
- 7 VGA port
- 8 HDMI port
- 9 LAN port
- 10 USB 3.0 port
- 11 Power port
- 12 On / off switch

Hardware



Channels

Manage up to sixteen TRENDnet network cameras*



Storage Bay

Two 3.5" SATA II bays supports up to 12 TB of total storage (6 TB per bay, HDDs not included)**



Network Port

Gigabit Ethernet network port



Display Ports

HDMI and VGA display ports



Audio Ports

RCA Audio in and out ports



USB Ports

One USB port for the included mouse and one for configuration backup and firmware upgrade



Mouse Included

Includes a mouse and does not require a keyboard



Rack Mount

Rack mount hardware included

Management



Free Apps

View live video on a mobile device with free iOS® and Android™ apps



Remote Access

Access the NVR over the internet



Camera Setup

Auto-recognizes TRENDnet cameras*



Live View

Multiple camera viewing options with variable-time auto-scan function



Camera Management

For each camera, manage on screen display, image settings, PTZ functionality, motion detection, privacy masks, tamper detection, and video loss



Video Recording

Full 1080p HD video at 30 fps in H.264 compression
Single camera max. resolution: 6 MP in H.264 compression



Recording Time

Record per camera with 12 TB of storage (HDDs not included)** and 16 x Full 1080p HD cameras at 30 fps with medium VBR



Scheduled Recording

Create weekly continuous and motion detection recording schedules for each camera with video overwrite when storage is full



Advanced Playback

Advanced archived video playback with a quick reference timeline and calendar



Video Export

Quickly export specific video types over a specified time



Dynamic DNS Support

Support for dyn.com and NO-IP.com



IPv6

IPv6 support



ONVIF / PSIA

Supports ONVIF / PSIA compliant network camera
Full 1080p HD Camera Support

Specifications

Video Output

- HDMI / VGA
- Resolution:
 - 1920 × 1080p / 60Hz
 - 1600 × 1200p / 60Hz
 - 1280 × 1024 / 60Hz
 - 1280 × 720 / 60Hz
 - 1024 × 768 / 60Hz

Audio

- Line-in with RCA connector (2.0Vp-p, 1kΩ)
- Line-out with RCA connector

Recording

- 16-channel simultaneous recording up to 1080p 30fps
- 2 SATA interface for HDD or SSD up to 6TB storage each

Playback

- Playback resolution: 5MP, 4 MP, 3MP, 1080p, UXGA, 720p, VGA, 4CIF, DCIF, 2CIF, CIF, QCIF

Hardware Standards

- IEEE 802.3
- IEEE 802.3u
- IEEE 802.3x
- IEEE 802.3ab

Device Interface

- 1 x Gigabit network port
- 1 x USB 2.0, 1 x USB 3.0
- HDMI port
- VGA port
- Analog audio in / out port
- Power port
- LED indicators (Power, Storage, and Network)

Network Protocol

- IPv4, IPv6, UDP, TCP, ICMP, SSL, TLS, ONVIF v2.2

- DHCP, NTP, DNS, DDNS, SMTP, FTP, SNMP v2
- HTTP, UPnP, RTSP, RTP, RTCP

Operating Temperature

- -10 - 55 °C (14 - 131 °F)
- Operating Humidity
- Max. 90% non-condensing

Certifications

- CE
- FCC
- UL

Dimensions

- 380 x 270 x 45 mm (15 x 11 x 1.8 in.)

Weight

- 1.64 kg (3.6 lb.)

Power

- Input: 100 – 240 V AC, 50/60 Hz, 1.7 A
- Output: 12 V DC, 3.33 A
- Consumption: 10 Watts max. (with HDD)

Management Interface

- Multi-language support: English, French, German, Portuguese, and Spanish
- Live view: Simultaneous 3x3, 1+7, 1+5, 2x2 views or auto switch single view
- Scheduled recording: continuous and motion detection with optional holiday exceptions.
- Supporting camera configuration through NVR*: On Screen Display, display settings: brightness, contrast, saturation, PTZ, motion detection setting, video tamper, and video loss.
- Holiday scheduling for custom recording schedules during observed holidays
- Advanced playback: playback multiple channels simultaneously and search video recordings with special event or tag
- Video export: tag, cut, and export video clips

- HDD: Encoded disk formatting, S.M.A.R.T. disk health monitoring and testing, bad sector detection, storage quota allocation to each video channel, recycle old recordings or send disk full warning to administrator by email
- USB external storage: firmware upgrade, import / export configuration file and logs, export recorded video files, search and playback videos directly from external storage
- Local live view settings: define screen layout and channel viewing sequence
- Alert messages: storage full, storage error, network disconnected, IP conflict, illegal login, and recording exceptions
- Supported dynamic DNS services: Dyn.com and NO-IP.com
- Management Setting: maximum 32 user accounts
- Traffic chart and statistics for network management

TRENDnet IP View App

- Free iOS® and Android™ app
- View your NVR video on your mobile device
- Take snapshots
- Zoom

Warranty

- 2 year limited

Package Contents

- TV-NVR2216 (No HDD installed)
- CD-ROM (Utility & User's Guide)
- Power Adapter (12V DC)
- Network cable (1.8 m / 6 ft.)
- HDMI cable (1.8 m / 6 ft.)
- Optical mouse
- Remote Control
- SATA data cables / power cables
- Quick Installation Guide
- Rack mount hardware

*See list of compatible cameras

** 6 TB per hard drive

*** Two weeks of continuous recording 16 cameras in 1080p resolution at 30 fps (medium VBR) with 12 TB of storage (HDDs not included)

