

TV-IP342PI/TV-IP343PI

Camera Firmware Upgrade Procedures

Warning:

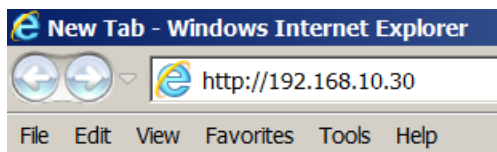
- Do not interrupt the connection while doing the firmware upgrading

Note:

- 1) It is necessary to perform a factory reset after the firmware upgrade. If you would like to keep your original setting, please back up your configuration first before upgrading the firmware.
- 2) For your protection, please input the password when you back up the configuration file. You will need this password to restore the confirmation file.

Firmware Upgrade

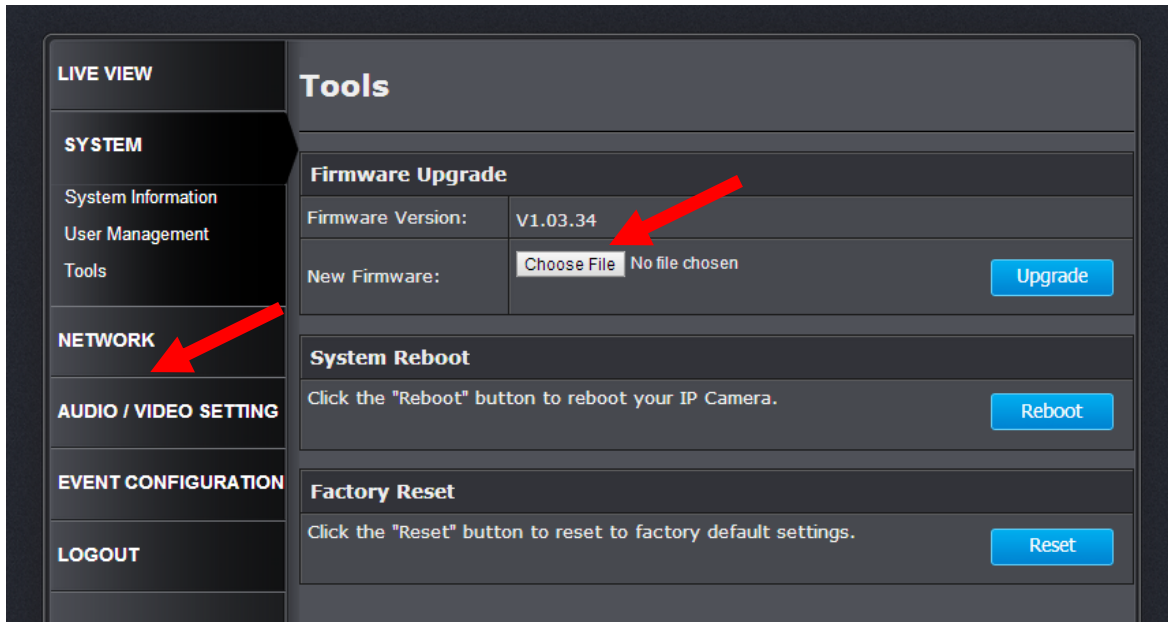
1. Download and unzip the firmware file from www.trendnet.com/downloads. Save the firmware on your computer. The firmware file name ends with *.bin.
2. Open a browser and go to your camera's IP address (192.168.10.30 is used on below example)



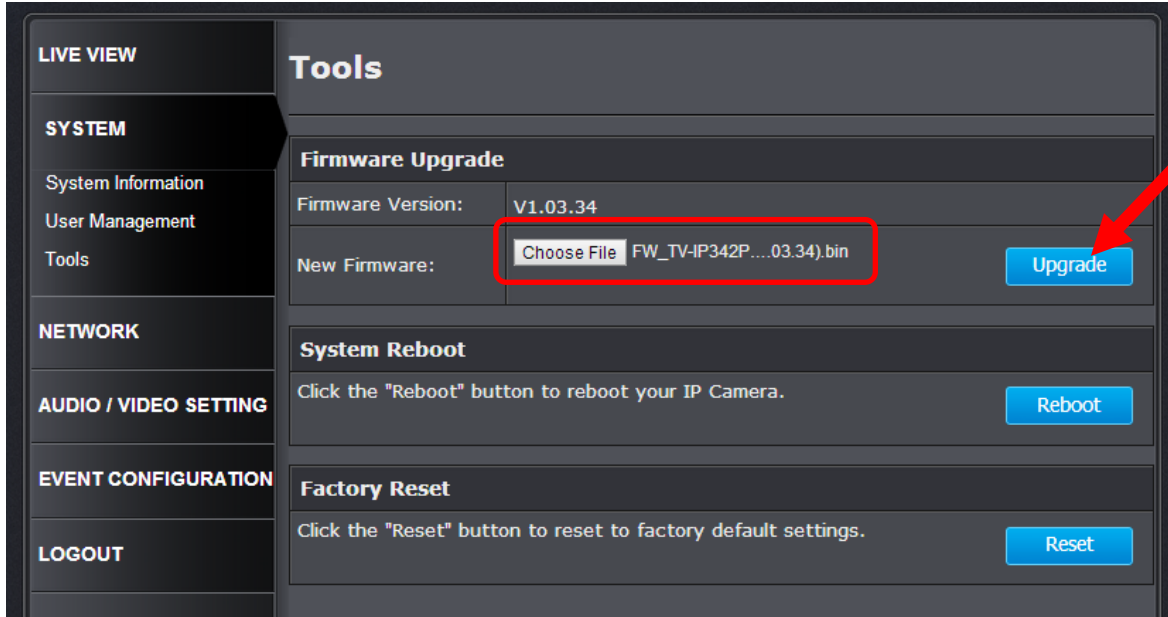
3. Enter the username & password of the camera (By default, the username & password is admin/admin)

Login to the TV-IP343PI	
User Name	<input type="text" value="admin"/>
Password:	<input type="password" value="....."/>
Language:	<input type="text" value="English"/>
<input type="button" value="Login"/>	

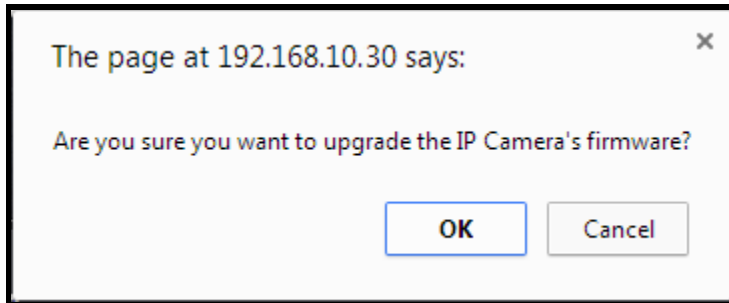
4. Go to **System** page, **Tools** tab then **Firmware Upgrade** section.



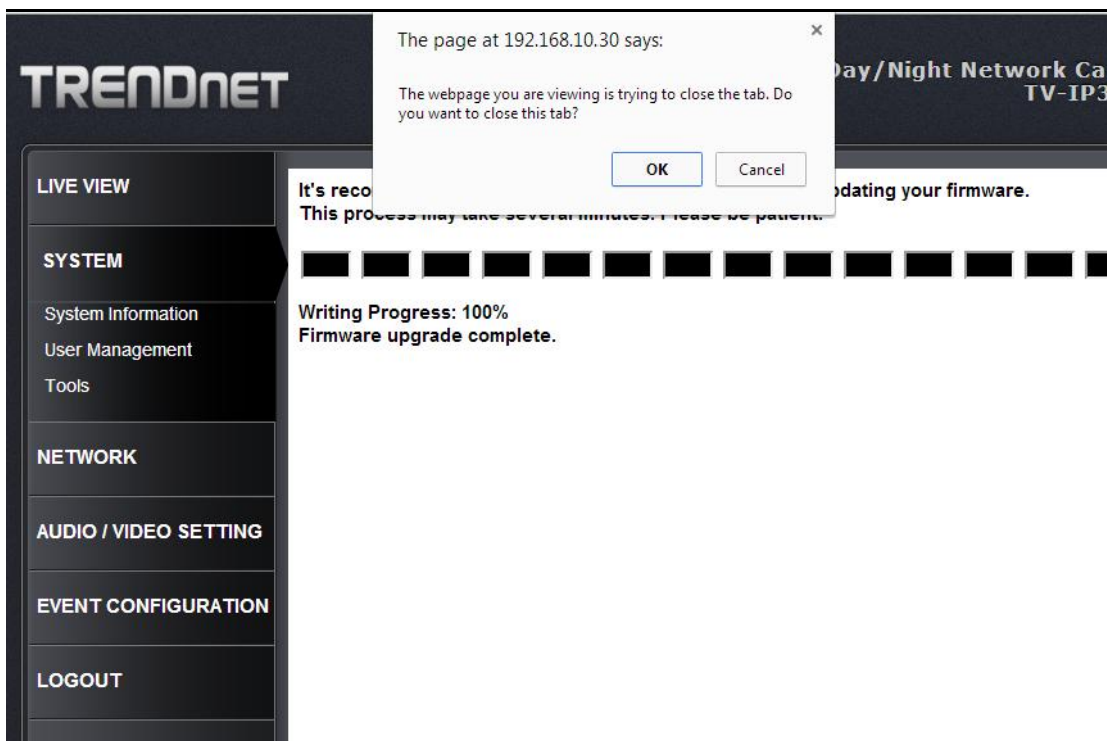
5. Click **Browse** to select the new firmware file then click **Upgrade**.



- Click **OK**.



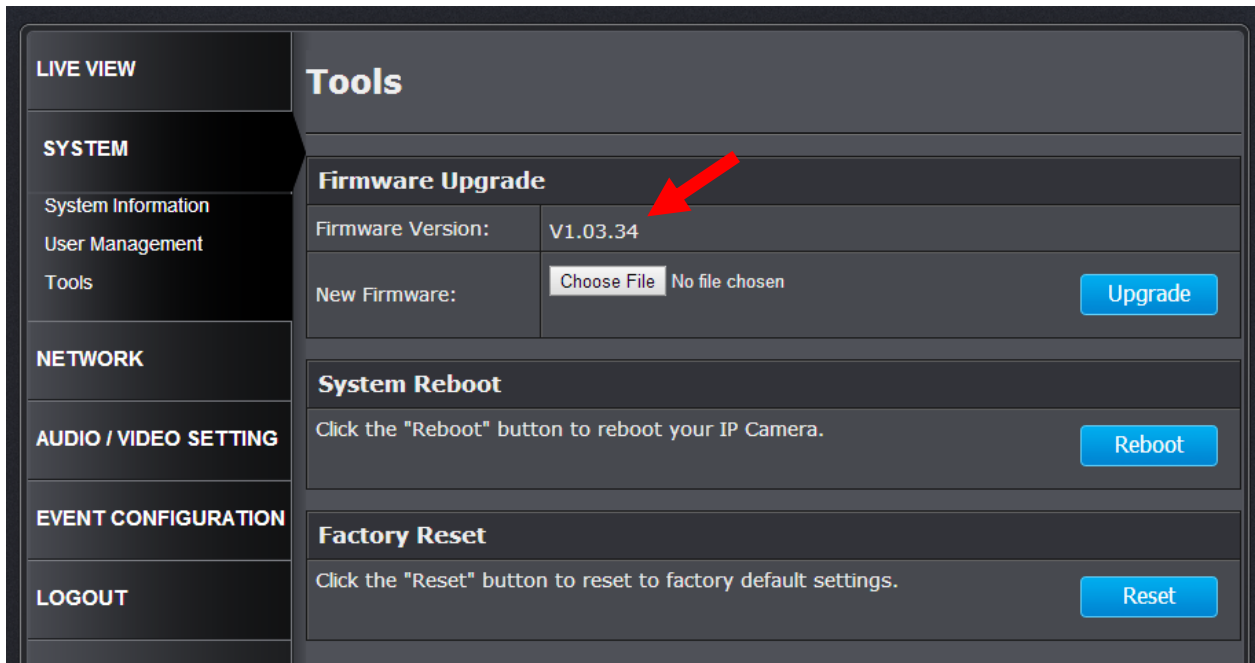
- Wait until the firmware writing progress completed and click **OK** to close the current tab.



- Open a browser and re-login your camera's IP address.

Login to the TV-IP343PI	
User Name	<input type="text" value="admin"/>
Password:	<input type="password" value="....."/>
Language:	<input type="text" value="English"/>
<input type="button" value="Login"/>	

9. After login, click **System/Tools** tab again to check the new firmware version.



10. Your firmware upgrade is now completed. To find the camera IP, please use the Camera Install Wizard or IPInstaller (can be found on the CD-ROM) to onfigure your camera again)