

# TV-IP300/TV-IP300W F.A.Q.

## Q: How can I configure my TV-IP300 (w) through the web-based configuration?

**A:** Open your web browser and type the IP address of the TV-IP300 in the address bar. The default IP address is 192.168.0.30.

---

## Q: What is the default IP address of my TV-IP300 (w)?

**A:** The default IP address is 192.168.0.30

---

## Q: How can I view the TV-IP300 (w) remotely if it's behind a router or firewall?

**A:** Each camera behind a firewall or router will need one port forwarded for the video streaming. The four default ports are:

1. 80 (TCP) HTTP Port
2. 8481 (TCP/UDP) Control Channel Port
3. 8482 (TCP/UDP) Audio Channel Port
4. 8483 (TCP/UDP) Video Channel Port

If you are installing multiple cameras you must change the port on the additional cameras.

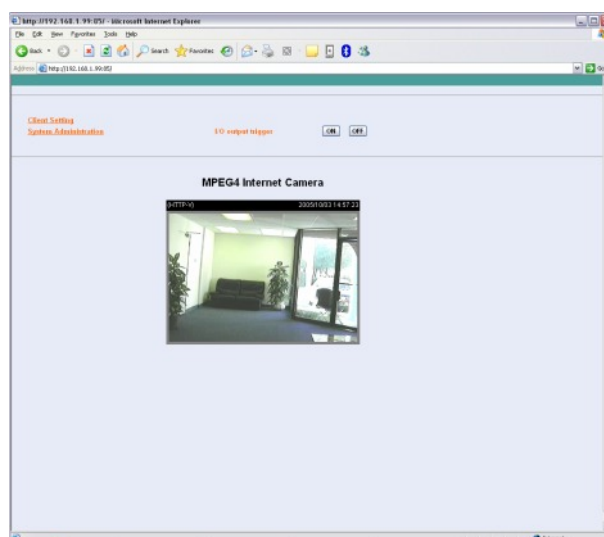
Camera 1 is using the default ports. Camera 2 must use different ports. For example:

1. 81 (TCP) HTTP Port
2. 8491 (TCP/UDP) Control Channel Port
3. 8492 (TCP/UDP) Audio Channel Port
4. 8493 (TCP/UDP) Video Channel Port

You can change the ports on the camera on the System tab in the web-configuration page.

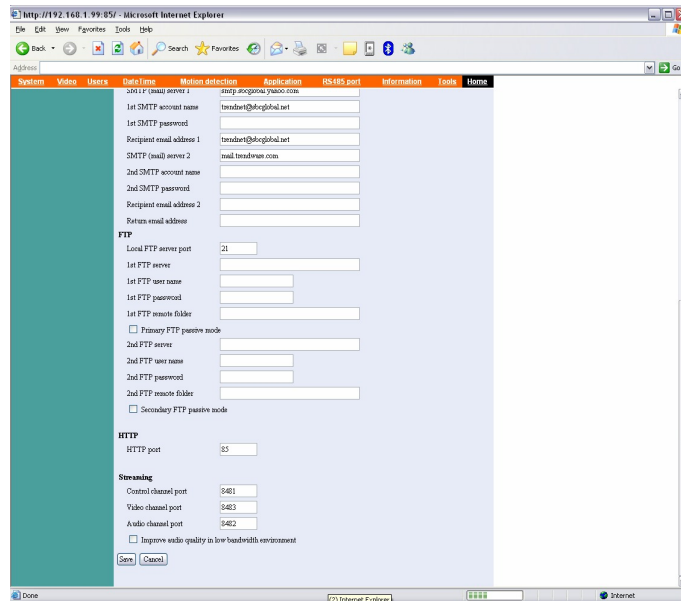
**Step 1.** Open your web browser and type the IP address of the TV-IP300 (w) in the address bar. The default IP address is 192.168.0.30.

**Step 2.** Click on “**System Administration**”.



# TV-IP300/TV-IP300W F.A.Q.

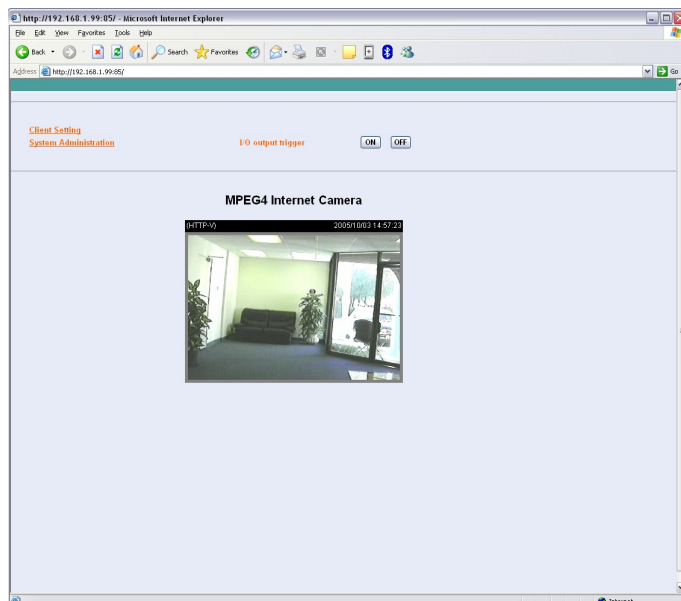
**Step 3.** Click on the **“System”** at the top of the page.



**Q: How do I configure the camera to record motion?**

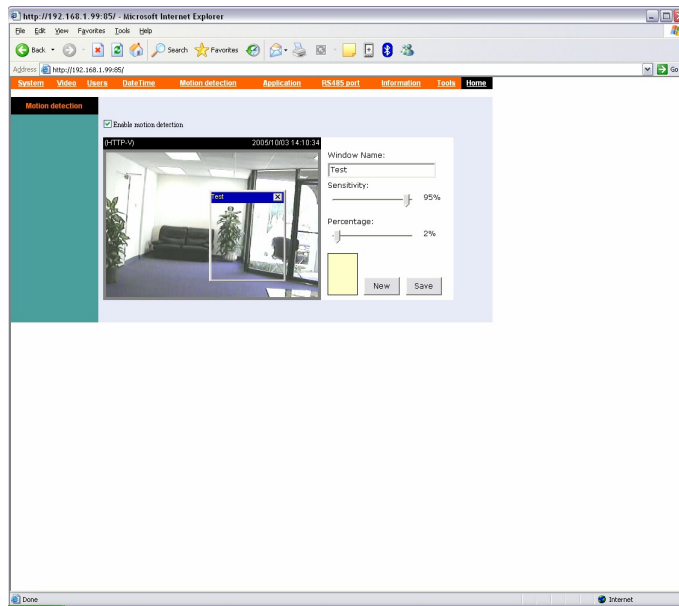
**A: Step 1.** Open your web browser and type the IP address of the TV-IP300 (w) in the address bar. The default IP address is 192.168.0.30.

**Step 2.** Click on **“System Configuration”**.



# TV-IP300/TV-IP300W F.A.Q.

**Step 3.** Click on the “Motion Detection” link at the top of the page.



**Step 4.** Place a check mark in “Enable motion detection” and click “Save”.

**Step 5.** Click on “New” to define a motion detection area.

**Step 6.** Input a name in the “Window Name” field.

**Step 7.** Change the dimensions of the motion detection area to meet your requirements by clicking and dragging the window.

**Step 8.** Adjust the Sensitivity and Percentage values to meet your requirements.

**Step 9.** Click “Save”.

Note: The Sensitivity rating determines the amount of motion in the created window to activate motion. Setting it too high or too low may result in unexpected results.

Note: The Percentage rating determines the amount of space in the window that has to have motion to activate motion detection.

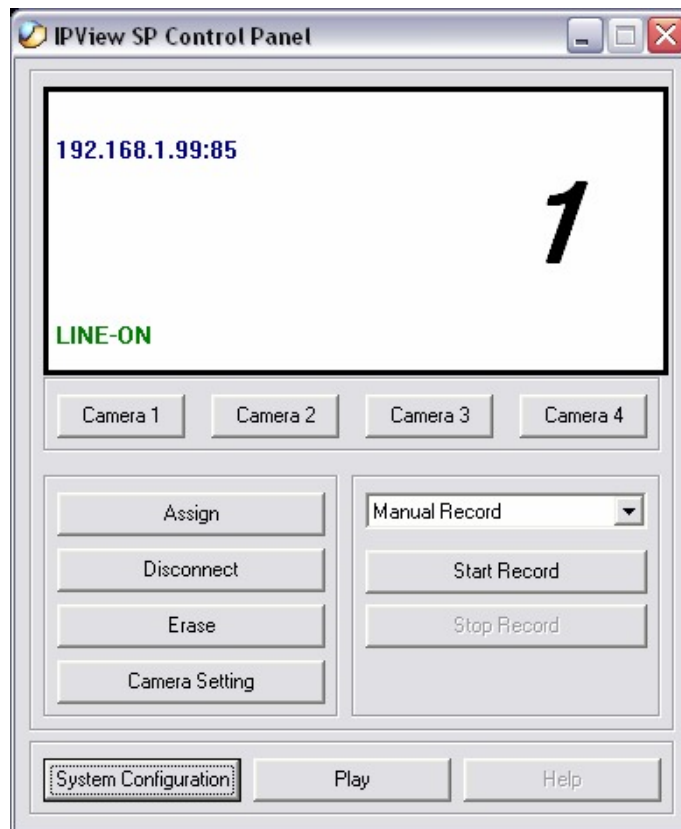
Example: Sensitivity rating of 95% with a percentage of 2%. With these settings 2% of the window must meet the 95% sensitivity rating to active motion detection.

# TV-IP300/TV-IP300W F.A.Q.

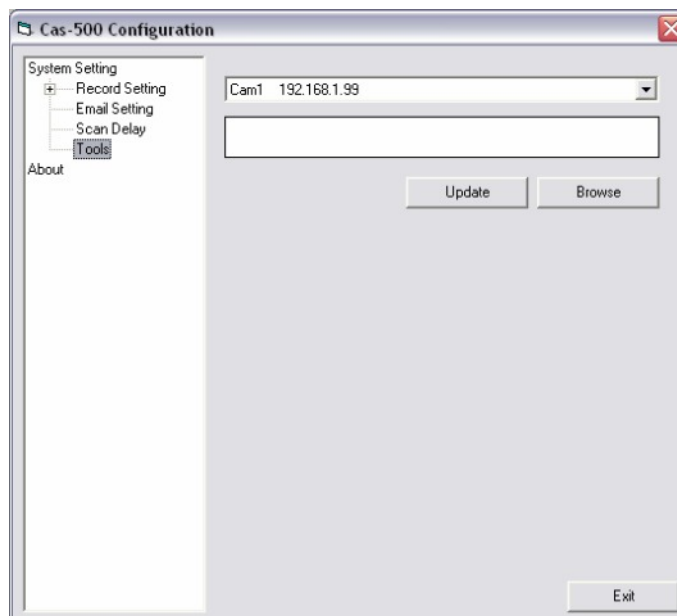
**Q: How do I upgrade the firmware of my camera?**

**A: Step 1.** Start the IPView SP application by clicking on **Start>All Programs> IPViewSP> IPViewSP**.

**Step 2.** Click on **“System Administration”**.

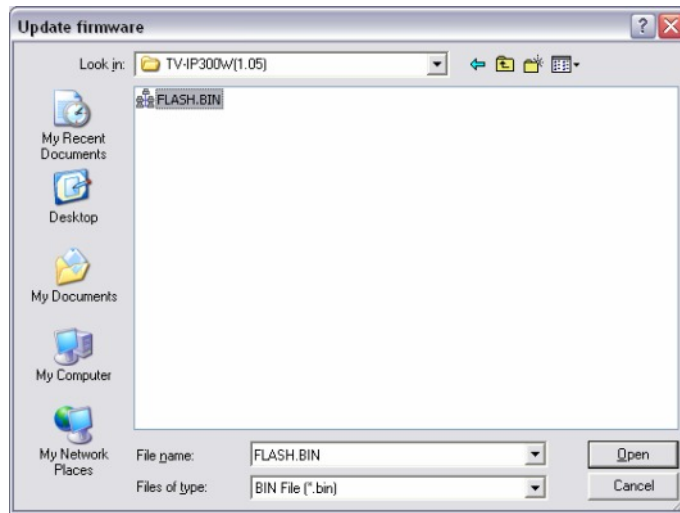


**Step 3.** Click **“Tools”**.

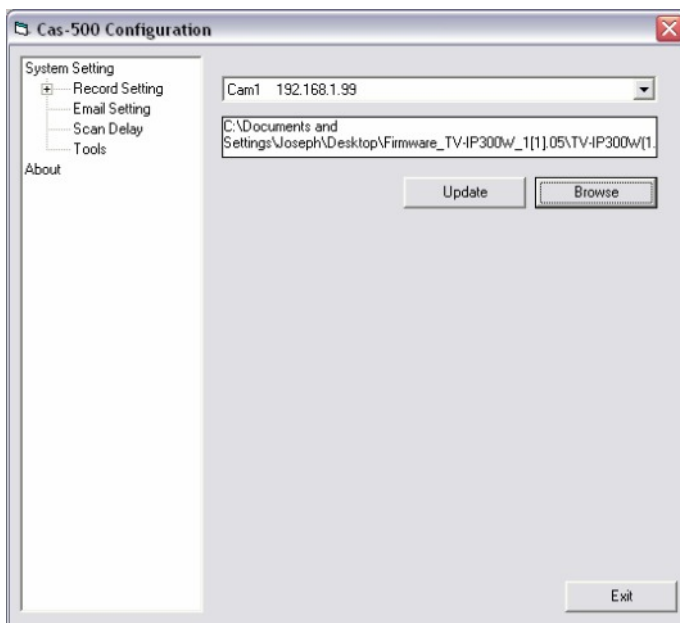


# TV-IP300/TV-IP300W F.A.Q.

**Step 4.** Click “**Browse**” and locate the firmware file and click open.



**Step 5.** Click “**Update**”.



---

**Q: Can my TV-IP300 (w) series camera use Power over Ethernet?**

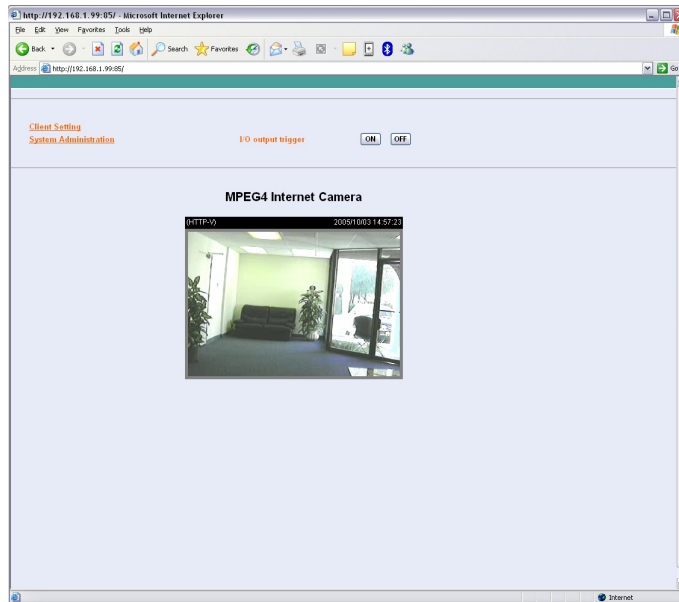
**A:** No, it does not support Power over Ethernet.

# TV-IP300/TV-IP300W F.A.Q.

**Q: How can I email snapshots based on motion from my camera?**

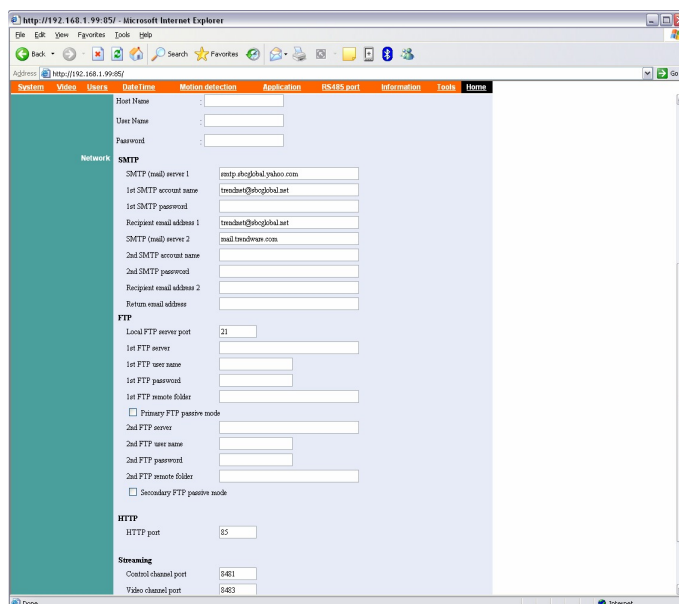
**A: Step 1.** Start the IPView Pro Program by going to **Start>Programs>IPView Pro>IPView Pro**.

**Step 2.** Click on the **“System Configuration”** button.



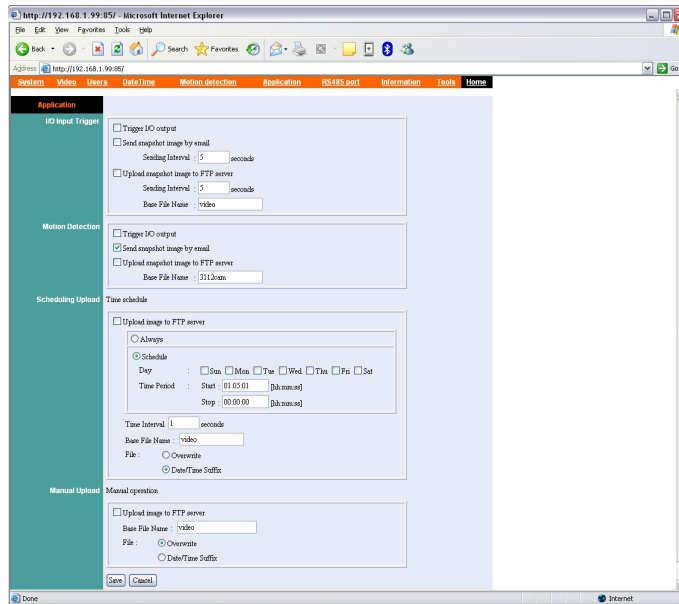
**Step 3.** Click on the System link at the top of the page. Fill in the SMTP section and click **“Save”**.

Note: The second SMTP server is a back up. It does not send emails to both addresses simultaneously. If the first one fails it will attempt to send the email out to the second account.



# TV-IP300/TV-IP300W F.A.Q.

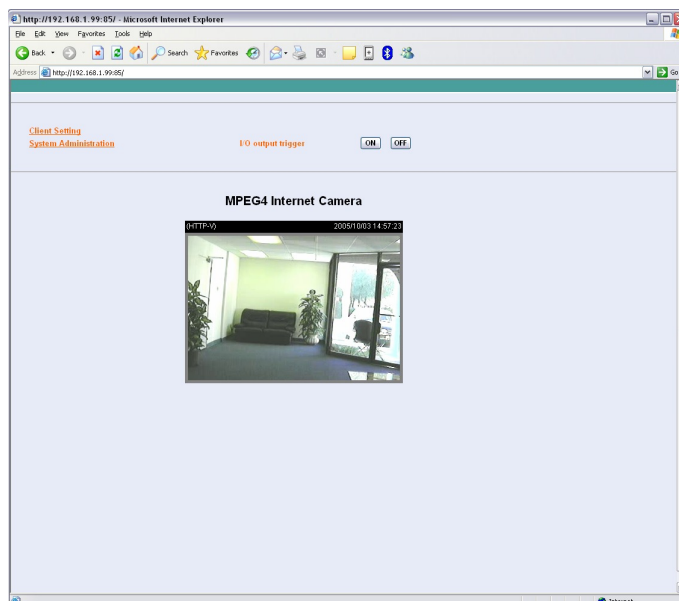
- Step 4.** Click on the “**Application**” link at the top of the page and place a check mark in “**Send snapshot image by email**” next to the Motion detection section then click “**Save**”.



**Q: How do I configure my TV-IP300 (w) series cameras to upload snapshots to an FTP server?**

**A: Step 1.** Open your web browser and type the IP address of the TV-IP300 (w) in the address bar. The default IP address is 192.168.0.30.

**Step 2.** Click on “**System Administration**”.



# TV-IP300/TV-IP300W F.A.Q.

**Step 3.** Click on **“System”** link at the top of the page. Fill in the FTP section and then click **“Save”**.

The screenshot shows the 'System' configuration page in a Microsoft Internet Explorer browser. The page is titled 'http://192.168.1.99:85/' and has a navigation bar with links: System, Video, About, Data Time, Motion detection, Application, RS485 port, Information, Tools, Home. The 'System' tab is selected. The page contains several sections of configuration fields:

- SMT (smtp) server 1:** Includes fields for '1st SMTP account name' (trnscht@qogkbl.net), '1st SMTP password', 'Recipient email address 1' (trnscht@qogkbl.net), 'SMT (smtp) server 2' (mail.trendwan.com), '2nd SMTP account name', '2nd SMTP password', 'Recipient email address 2', and 'Return email address'.
- FTP:** Includes fields for 'Local FTP server port' (21), '1st FTP server' (whatever.com), '1st FTP user name' (test), '1st FTP password' (\*\*\*\*\*), '1st FTP remote folder' (/test), a checkbox for 'Primary FTP password mode', '2nd FTP server', '2nd FTP user name', '2nd FTP password', '2nd FTP remote folder', and a checkbox for 'Secondary FTP password mode'.
- HTTP:** Includes a field for 'HTTP port' (85).
- Streaming:** Includes fields for 'Control channel port' (841), 'Video channel port' (843), and 'Audio channel port' (842), along with a checkbox for 'Improve audio quality in low bandwidth environment'.

At the bottom of the form are 'Save' and 'Cancel' buttons.

**Step 4.** Click on the **“Application”** link at the top of the page. You can configure an FTP upload on Motion Detection, on a Schedule or Manually. After you have configured the settings click **“Save”**.

The screenshot shows the 'Application' configuration page in a Microsoft Internet Explorer browser. The page is titled 'http://192.168.1.99:85/' and has a navigation bar with links: System, Video, About, Data Time, Motion detection, Application, RS485 port, Information, Tools, Home. The 'Application' tab is selected. The page contains several sections of configuration fields:

- IO Input Trigger:** Includes checkboxes for 'Trigger IO output', 'Send snapshot image by email', and 'Upload snapshot image to FTP server'. It also has 'Sending Interval' (5 seconds) and 'Base File Name' (video) fields.
- Motion Detection:** Includes checkboxes for 'Trigger IO output', 'Send snapshot image by email', and 'Upload snapshot image to FTP server'. It also has a 'Base File Name' (01125m) field.
- Scheduling Upload:** Includes a checkbox for 'Upload image to FTP server', radio buttons for 'Always' and 'Schedule', a 'Day' selection (Sun, Mon, Tue, Wed, Thu, Fri, Sat), 'Time Period' (Start: 01:05:01, Stop: 00:00:00), 'Time Interval' (1 second), and 'Base File Name' (video) field.
- Manual Upload:** Includes a checkbox for 'Upload image to FTP server', 'Base File Name' (video) field, and radio buttons for 'Overwrite' and 'Date/Time Suffix'.

At the bottom of the form are 'Save' and 'Cancel' buttons.

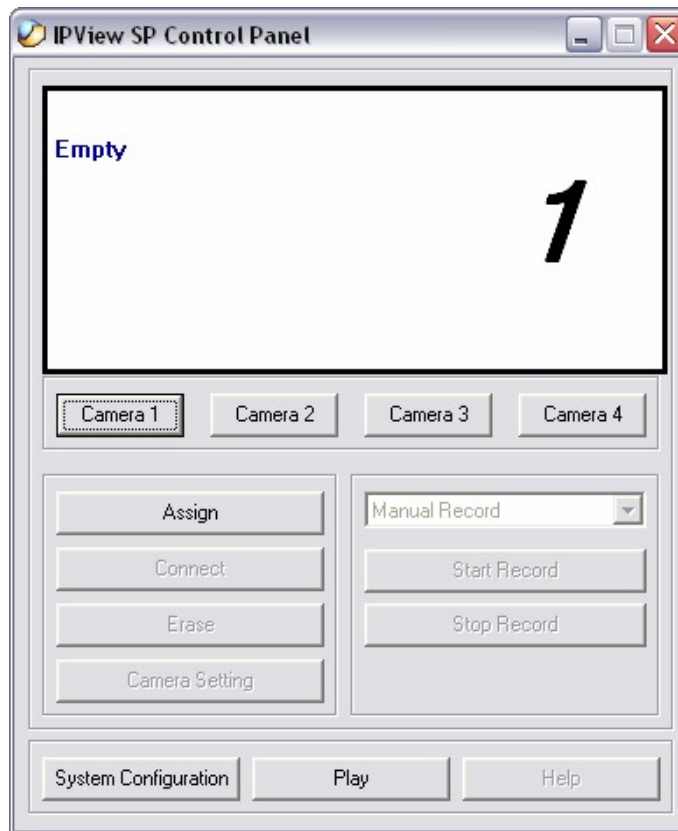


# TV-IP300/TV-IP300W F.A.Q.

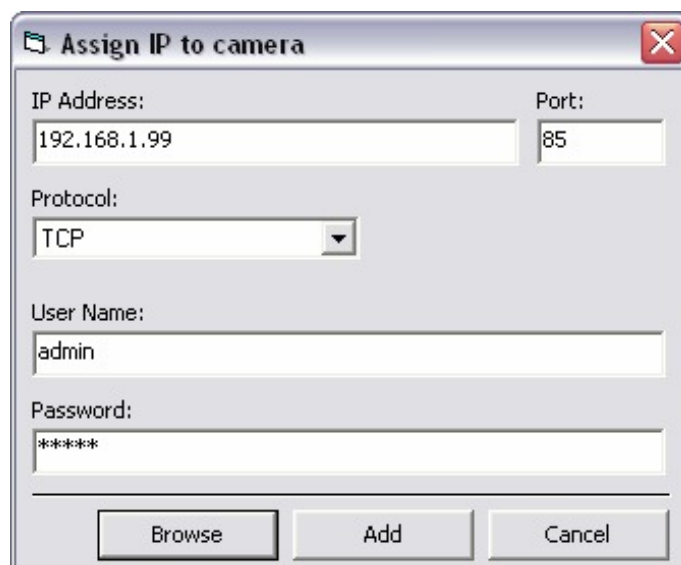
**Q: How do I view the TV-IP300 (w) image using IPView Pro?**

**A: Step 1.** Start the IPView SP Program by going to **Start>Programs>IPView SP>IPView SP**

**Step 2.** Click on “**Camera 1**”.

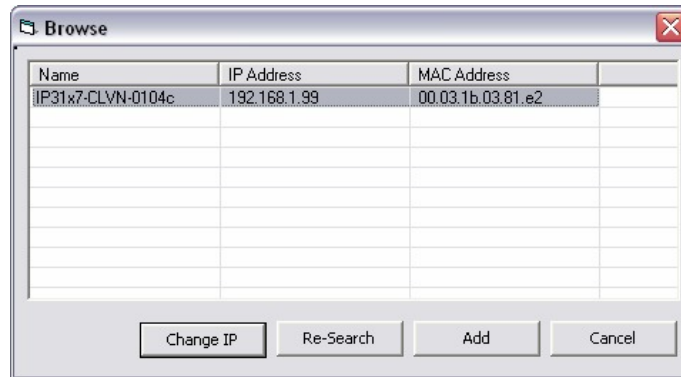


**Step 3.** Enter the IP address, port and protocol. Also enter in the username and password if you have assigned one to the camera. Click “**Add**”.



# TV-IP300/TV-IP300W F.A.Q.

Note: You can also add the camera by clicking on browse. Highlight the camera and click on “Add”.



**Q: Which web browsers will allow me to view the video from a TV-IP300 (w)?**

**A:** Internet Explorer 5.0 and above.

## **Requirements**

Memory Size:128M (256 Recommended)

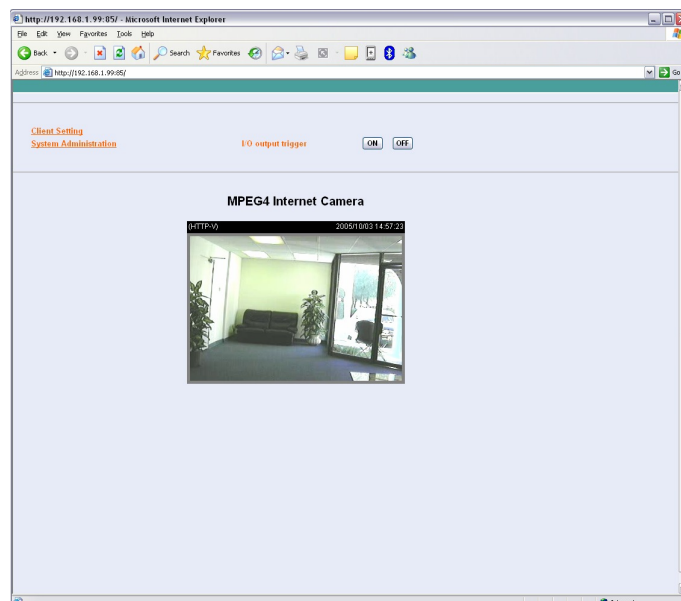
Pentium III, 450 MHz or above

VGA card resolution: 800 x 600 or above

**Q: How do I add user accounts to my TV-IP300 (w)?**

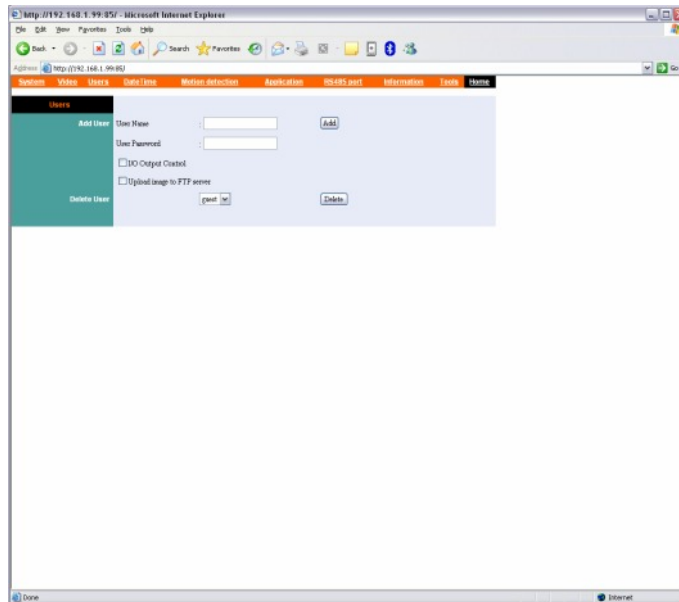
**A: Step 1.** Open your web browser and type the IP address of the TV-IP300 (w) in the address bar. The default IP address is 192.168.0.30.

**Step 2.** Click on “System Administration”.



# TV-IP300/TV-IP300W F.A.Q.

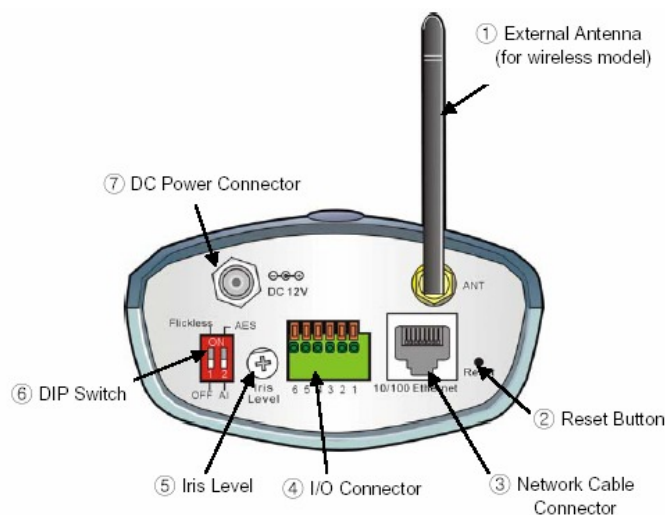
**Step 3.** Click on the “Users” link at the top of the page.



**Step 4.** Enter the desired username and password in the corresponding fields and click “Add”.

**Q: How do I reset my TV-IP300 (w) back to factory defaults?**

**A: Step 1.** Locate the reset button on the back of the unit.



**Step 2.** Disconnect the power supply.

**Step 3.** Press and hold in the reset button.

**Step 4.** While holding in the reset button; reconnect the power supply.

**Step 5.** Continue to hold in the reset button for approximately 10 seconds to restore the default settings.

# TV-IP300/TV-IP300W F.A.Q.

## Q: What do the LED's on the front of the camera mean?

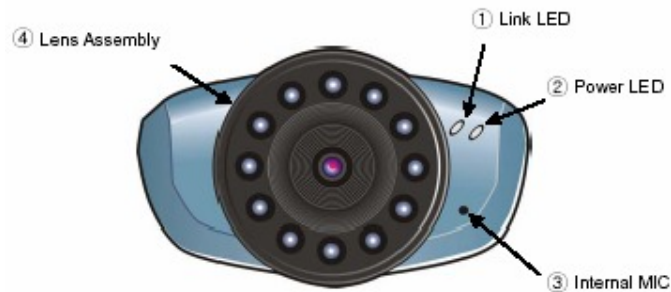
### A: LED (1) Link light.

Steady **Red** light shows a good connection. The light will flash when sending or receiving data.

### LED (2) Power light.

Steady **Blue** light confirms that the camera is powered on.

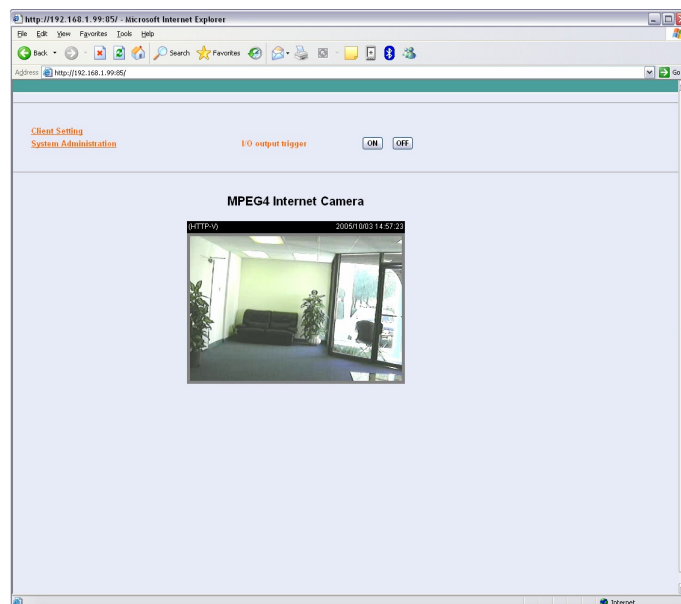
### Front Panel



## Q: How do I set a password on my TV-IP300 (w)?

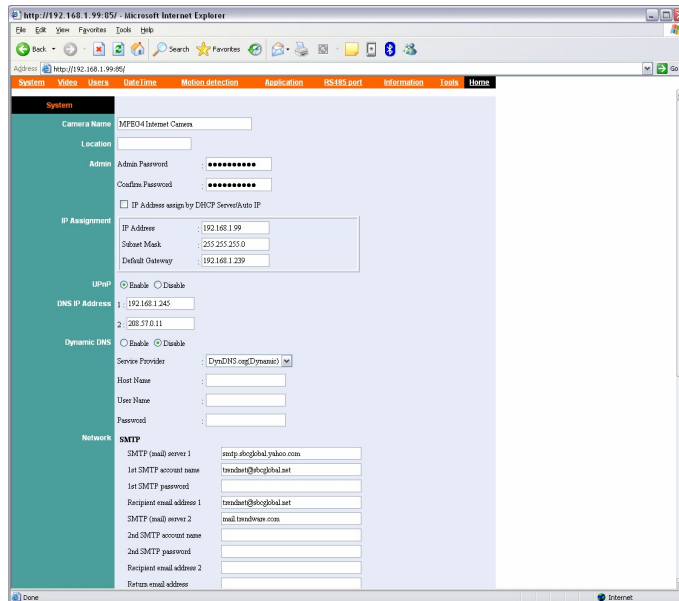
**A: Step 1.** Open your web browser and type the IP address of the TV-IP300 (w) in the address bar. The default IP address is 192.168.0.30.

**Step 2.** Click on “**System Administration**”.



# TV-IP300/TV-IP300W F.A.Q.

**Step 3.** Click on the “System” link on the top of the screen.



**Step 4** Enter a password into the admin password field then retype it to confirm it. Click “Save”.