

User's Guide



PoE Dome Internet Camera

TV-IP252P

Contents

Product Overview	2
Package Contents	2
Features	2
Product Hardware Features	3
Application Diagram	4
Installation.....	4
Hardware Installation.....	4
Camera Installation	5
Starting Camera Finder (IPSetup)	8
Configuration.....	10
Viewing Camera Basic Function.....	10
Configuring the Camera Setting	11
Smart Wizard.....	12
Basic.....	13
Network	15
Video & Audio	18
Event Server	20
Motion Detect	23
Event Config	23
Tools	26
Device Info	27
How to setup/access the camera behind a Router	28
Technical Specifications.....	31
Troubleshooting.....	32

Product Overview



TV-IP252P

Package Contents

- TV-IP252P
- Multi-Language Quick Installation Guide
- CD-ROM (Utility, Software & User's Guide)
- Network cable (1.5m / 5ft)
- Power adapter (12V DC, 1.5A)
- Camera mounting kit

If any package contents are missing or damaged, please contact the retail store, online retailer, or reseller/distributor that the item was purchased.

Features

The PoE Dome Internet Camera (model TV-IP252P) is designed for indoor enterprise class security surveillance applications. View and manage the tamper resistant dome IP camera from any Internet connection.

Manually pan the camera side-to-side 350 degrees and tilt it up-and-down 160 degrees to fix its final viewing angle. No need to install this camera near a power source, power and data are received through a single Ethernet cable using Power over Ethernet (PoE) technology.

Manage up to 32 TRENDnet cameras with the included complimentary camera management software. Advanced features include motion detection recording with two motion detection windows, email alerts, scheduled recording sessions, Samba client saves video to network storage devices, dual streaming MPEG-4/MJPEG image compression, two-way audio support (microphone and speaker sold separately), Input/Output ports, digital zoom and an analog BNC video-out connector. A wall/ceiling mounting kit is included and the off-white IP camera housing blends into most environments.

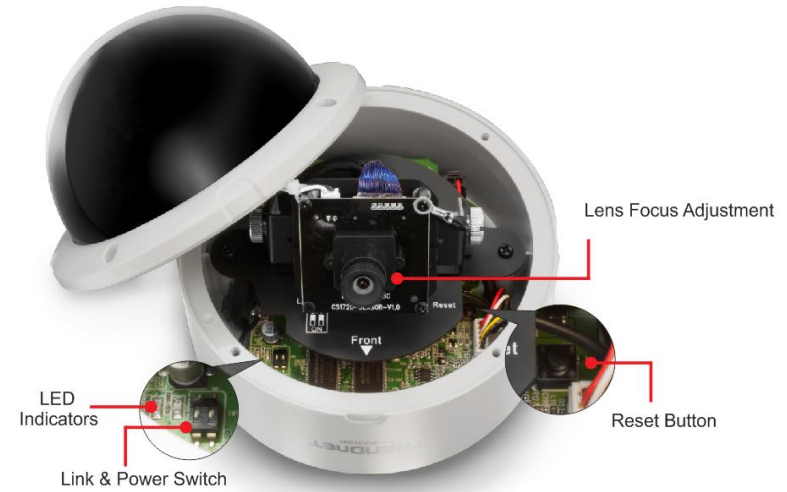
- * TRENDnet's Mobile APP supports iPhone®, iPad®, iPod® Touch and Android. Search for SecurView Mobile from iTunes® or Google Play™. For future updates, please check www.trendnet.com/App for details.
- ** Monitoring multiple cameras may required a high performance CPU

Product Hardware Features

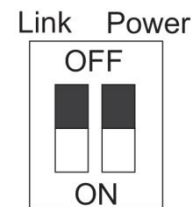


- **Ethernet/PoE Port:** Connect the provided network cable (RJ-45 type). The connector supports Power over Ethernet standard (PoE), enabling the camera to be powered by the Ethernet.
- **Power:** Connect the provided power adapter to supply power to the camera if not using PoE.
- **GPIO:** Connected the provided external GPIO connector to the device, and then connect the external device (such as motion detection, event triggering or alarm system) to GPIO adapter.
- **BNC connector:** Connect the external monitor to BNC connector
- **Mic In:** Connect an external microphone.
- **Speaker Out:** Connects an external speaker.

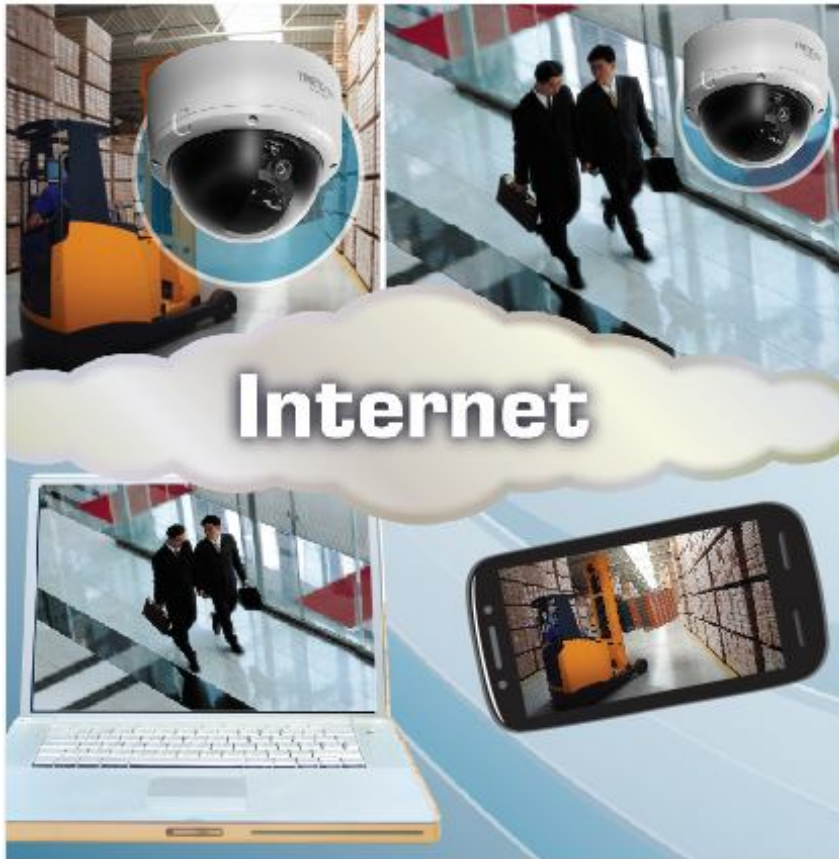
Inside Component



- **Lens Focus Adjustment:** Adjust the focus either clockwise or counter clockwise.
- **Reset button:** Press the button to restart the camera. Press and hold the button for five seconds, the camera will resume the factory default settings.
- **LED indicators:** Indicates the camera is powered on with the steady amber light and the link activity with blinking green light
- **Link & Power switches:**
The two switches allow you to manually turn of the LED indicators.



Application Diagram



Installation

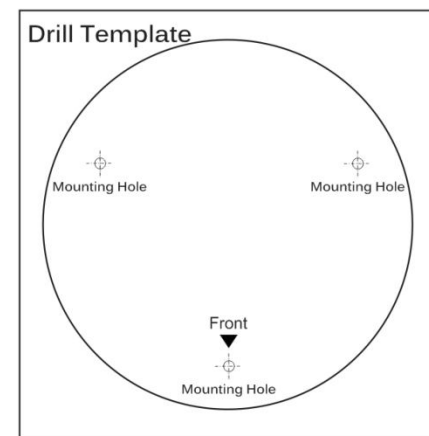
Hardware Installation

The camera can be mounted to the ceiling surface directly by following the steps below:

1. Remove the Dome cover by unscrewing the four screws.



2. Use the included drill template to drill three mounting holes on the desired location and hammer the plastic anchors into the holes.



3. Secured the camera to the location with three screws.
4. Before put the Dome cover back, adjust the lens assembly by the following steps:
 - Tilt the camera lens to a proper position by loosening the screws (1) and then swinging the adjustable base (2).
 - Rotate the camera lens by turning the base pedestal (3) in either clockwise or counter clockwise direction.
 - Adjust the lens focus by turning the lens ring slowly (4) in either clockwise or counter clockwise direction.



NOTE: You can review the image quality from the Web browser when you complete the installation. If the image quality is poor, you have to disassemble the Dome cover to adjust the lens focus until the desired image appears clearly.

5. Put the Dome cover back and secure with four screws.

Camera Installation

1. Insert the Installation CD-ROM into your computer's CD-ROM drive to initiate the Auto-Run program.



2. Click the **Install Camera**.



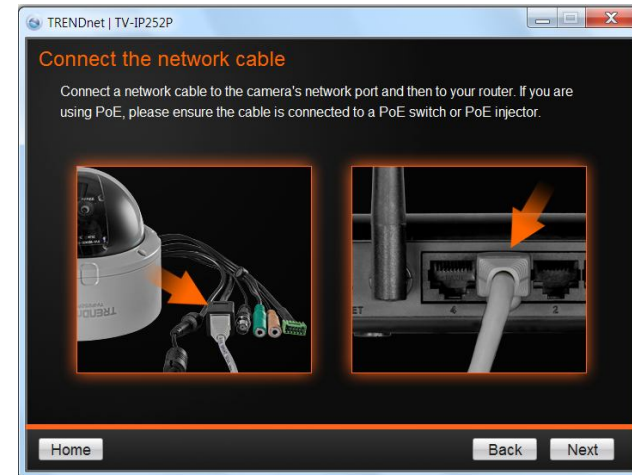
- Write down the MAC ID of the camera



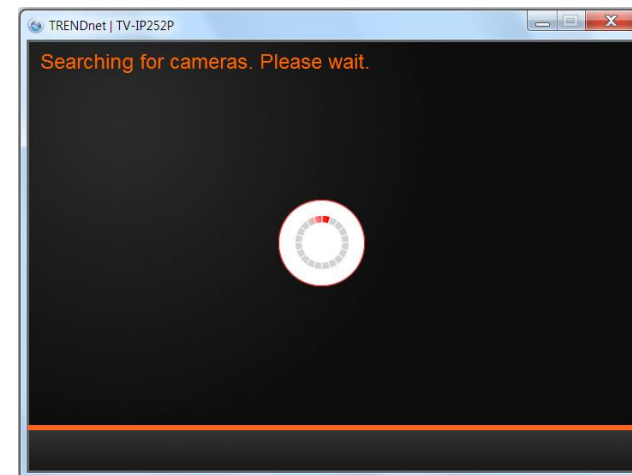
- If you are using PoE to supply power to camera, please skip to the next step. To power up the camera, plug in and connected the power adapter to the camera. You can verify the power connection by checking the amber LED on the camera.



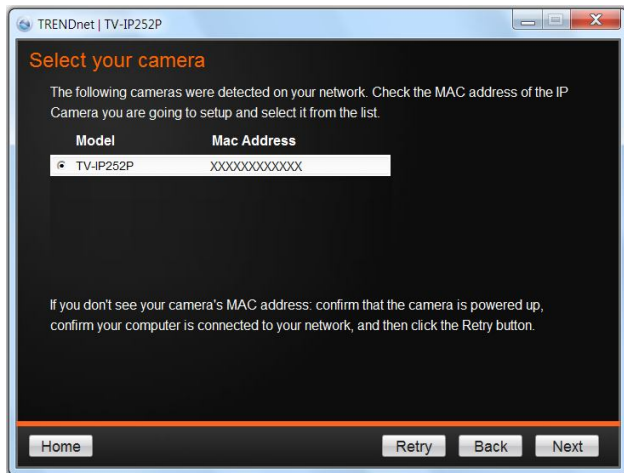
- Connect a network cable to the camera's network port and then to your router. If you are using the PoE, please ensure the cable is connected to a PoE switch or PoE injector.



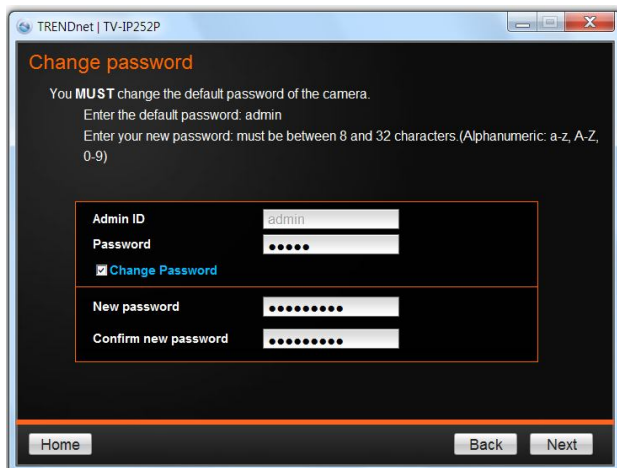
- Wait while the utility is searching the cameras.



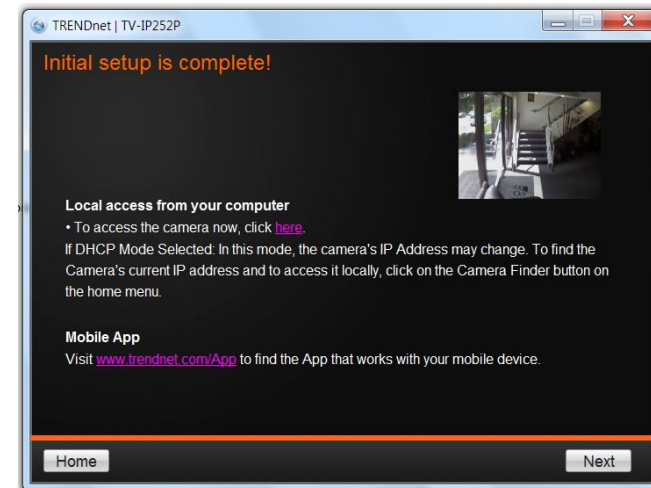
7. The founded cameras will show on the screen. The camera already selected by default if you have only one camera installed. If you have more than one camera in the same Network, you will need to identify the camera by the MAC ID.



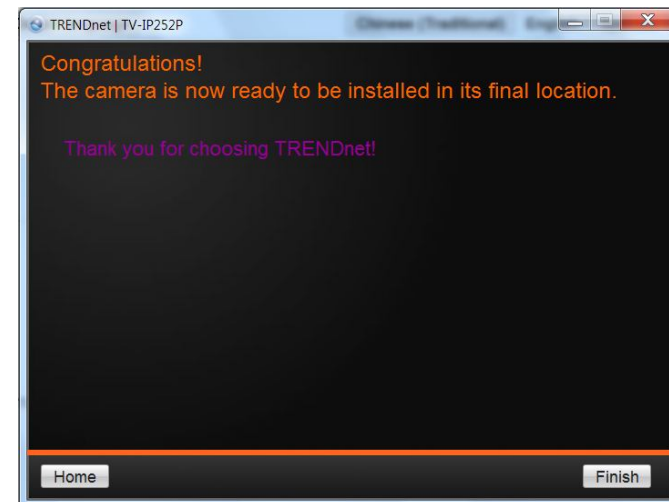
8. Type in the Password. The password is "admin" by default. We strongly suggested changing the camera's password. The **Change Password** option is enable by default.



9. Click **here** on the screen to access the camera now or click **Next** button for later accessing.



10. Click **Finish** to exit the program or click **Home** return to the main screen.



Starting Camera Finder (IPSetup)

The camera comes with a conveniently utility, IPSetup, which is included in the Installation CD-ROM, allowing you to search the camera on your network easily.

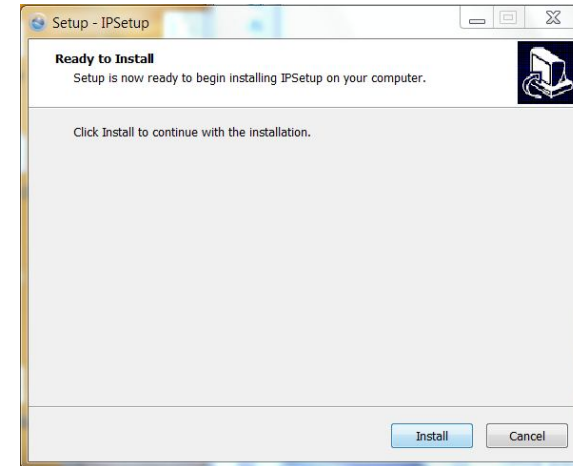
1. Insert the Installation CD-ROM into your computer's CD-ROM drive to initiate the Auto-Run program.



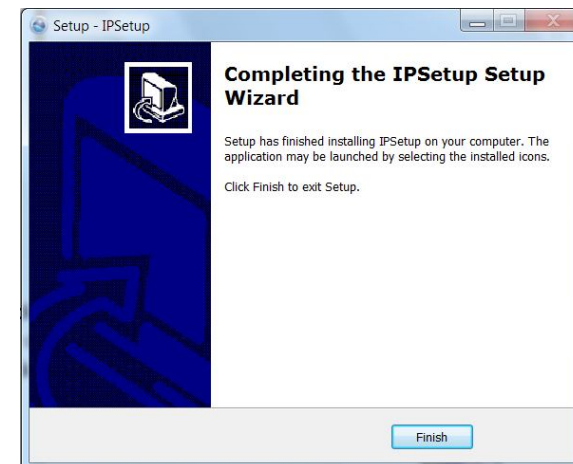
2. Click the **Camera Finder (IPSetup)** from the Auto-Run menu screen.



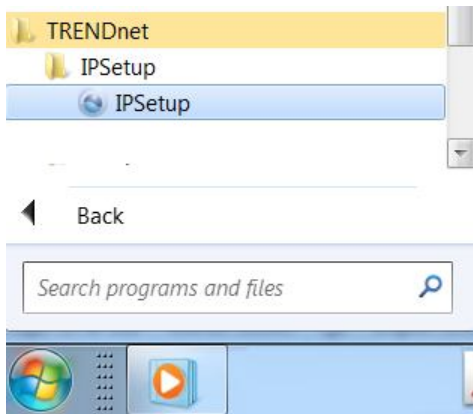
3. Click the **IPSetup** from the Auto-Run menu screen. Then the IPSetup Wizard will appear. Click **Install** to install the utility.



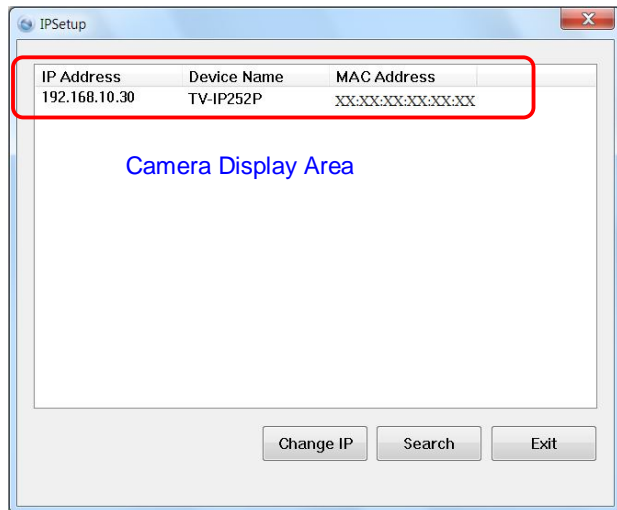
4. When the **Completing the IPSetup Setup Wizard** appears, click **Finish**.



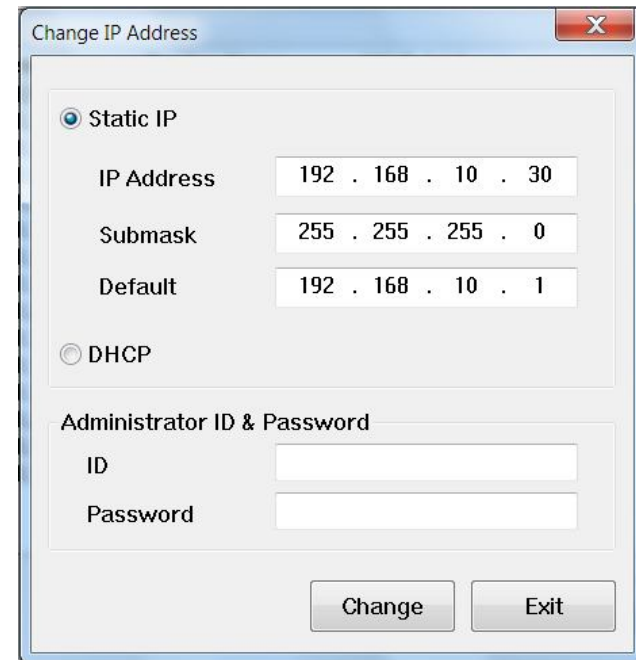
5. After installing the IPSetup utility, the application is automatically installed to your computer, and creates a folder in **Start\Program\TRENDnet\IPSetup**.
6. Click **Start>Programs>TRENDnet>IPSetup**, and then click **IPSetup**.



7. The IPSetup window will appear. It will search for the camera within the same network.



- **Camera Display Area:** By default, the IP setting on the Camera is set to DHCP. If you have DHCP server, the camera will automatic get the IP address from DHCP server. If you do not have DHCP server on your network, it will show the default IP as 192.168.10.30. Double click the IP address; it will link to Camera's Web Configuration page.
- **Change IP:** Click this button to bring up the following window. It allows you to change the IP Address. You can select either **Static IP** or click **DHCP**. Then, enter the Administrator ID & Password. By default the ID/Password is: **admin**. When complete, click **Change**.

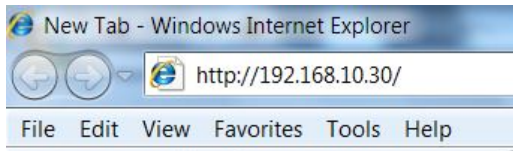


- **Search:** Click this button to search the connected camera in the same network
- **Exit:** Click this button to exit the program.

Configuration

Viewing Camera Basic Function

Open the Web browser on your computer (example showed in the User's Guide is based on the Internet Explorer). Type the default IP address (192.168.10.30) or the IP address found by IPSetup in the Address bar, and then press [Enter].

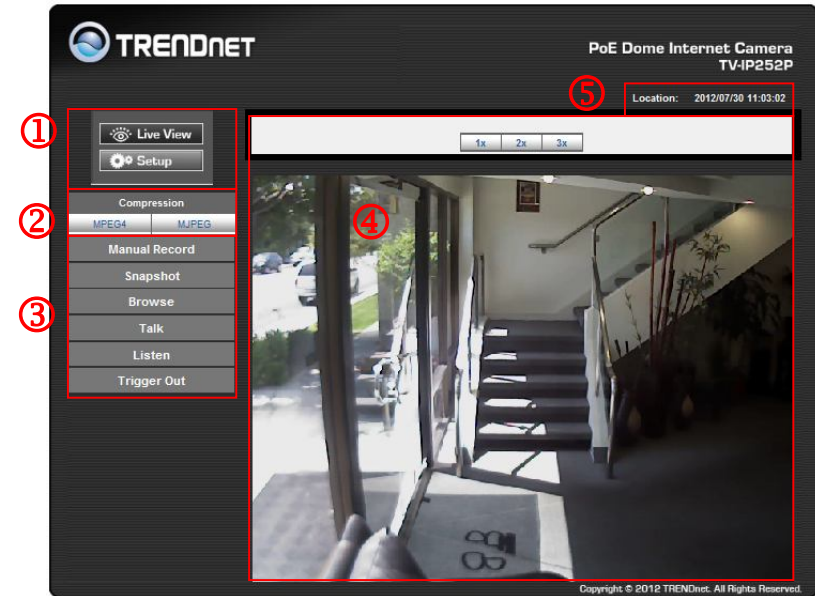


When the login window appears, enter the **User name (admin)** and the **Password**. By default, the password is admin. If you have change the password during camera installing, please enter the password that you have updated. Click **OK** to link to camera's Web Configuration.



NOTE: If you are initially access to the camera, you will be ask to install a new plug-in for the camera. Permission request depends on the Internet security settings of your computer. Click **Yes** to proceed.

After you login into the Web Configuration of the camera, the main page will appear as below:



The Main screen of the Web Configuration provides you with many useful information and functions, including:

1 Live View/Setup Switch:

- Click the **Live View** button to configure the camera.
- Click the **Setup** button to return to the Main screen to view the live view image.

2 Compression Buttons:


Select to transmit and record the video using MPEG4, or MJPEG compression.

3 Function Buttons:

- **Manual Record** allows you manually record and save a video clip*.

- **Snapshot** allows you to capture and save a still image*.
- **Browse** allows you to assign the destination folder to store the video clips and still images*.
- **Talk** allows you to speak out through the camera. Please note only one user is allowed to use this function at a time.
- **Listen** allows you to receive the on-site sound and voice from the camera.
- **Trigger Out** allows you to trigger on/off the GPIO output manually.

4 Live View: The Live View Image window displays the real-time image of the connected camera.

- The current compression mode of image is displayed above the Live View Image window.
- Click the **Zoom In** buttons  above the Live View Image window to zoom in the live view image by 1x, 2x, or 3x.

5 Camera Information: Displays the camera's location and the current date & time. The information can be modified in the Web Configuration.

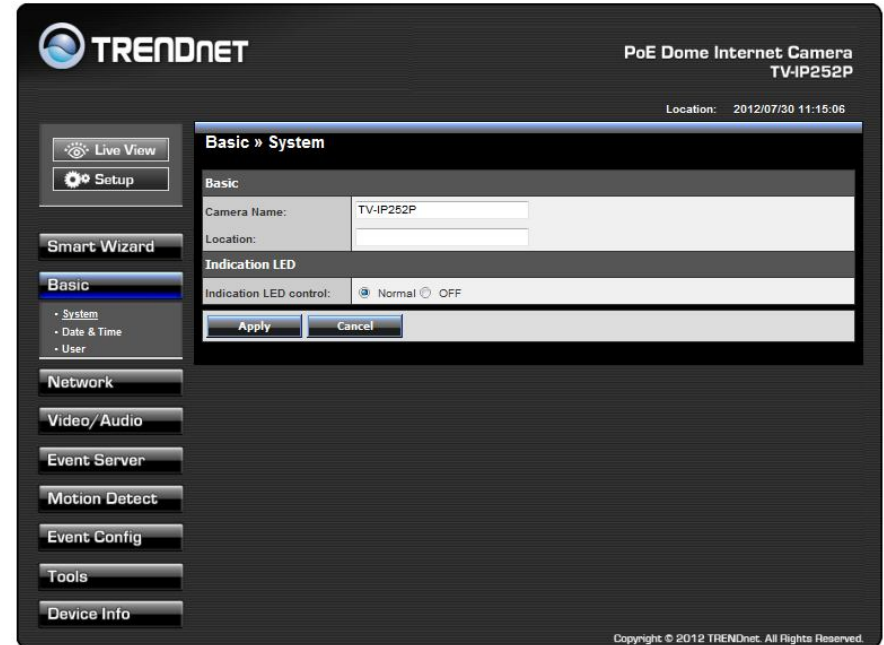
- * If you are using Microsoft 7/Vista platform, you may not be able to find the recorded files by **Snapshot** or **Manual Record**. You will need to disable the protected mode of Security in the IE browser before recording a video file or taking a snapshot.

Please follow the below steps:

1. Open IE Browser then select **Tools → Internet Options**
2. Select **Security**
3. Uncheck the "**Enable Protected Mode**" then press **OK**

Configuring the Camera Setting

To configure the camera, click  on the Main screen of Web Configuration. The Web Configuration will start from the **Basic** page.



The Web Configuration contains the settings in the left menu bar, including **Smart Wizard**, **Basic**, **Network**, **Video/Audio**, **Event Server**, **Motion detect**, **Event Config**, **Tools**, and **Device Info**.

Smart Wizard

The camera's Smart Wizard lets you configure your camera easily and quickly. The wizard will guide you through the necessary settings with detailed instructions on each step.

To start the wizard, click **Smart Wizard** in the left menu bar.

- **Camera Setting**

By default, the camera name is set as model number. Change the name if necessary. Enter the location and administrator password twice. It is stronger recommend that you change the admin password.

TRENDnet PoE Dome Internet Camera TV-IP252P
Location: 2012/07/30 11:15:47

Welcome to the Smart Wizard.
This wizard will help you quickly set up the Network Camera to run on your network.

Camera Settings

Camera Name: Enter a descriptive name for the camera. For example, camera 1.

Location: Enter a descriptive name for the location used by the camera. For example, meeting room 1.

Admin Password/Confirm Password: Enter the administrator password twice to set and confirm the password to access the camera's Configuration Utility.

Camera Name: TV-IP252P
Location:
Admin Password:
Confirm Password:
Next > Cancel

Copyright © 2012 TRENDnet. All Rights Reserved.

- **IP Setting**

Select the IP setting according to your network: **DHCP**, **Static IP**, or **PPPoE**.

IP Settings

DHCP
 Static IP
 PPPoE

IP: 192 . 168 . 10 . 30
Subnet Mask: 255 . 255 . 255 . 0
Default Gateway: 192 . 168 . 10 . 1
Primary DNS:
Secondary DNS:

User Name:
Password:
< Prev Next > Cancel

- **Email Settings**

Enter the required information to be able to send email with image. For example, myserver.com. If you are using a free mail service (e.g. Google Gmail®, Yahoo®, Hotmail®), please enter the SMTP server address and the corresponding information from the service provider.

Email Setting

SMTP Server Address: myserver.com
Port Number: 25
 This server requires an encrypted connection (SSL)
 STARTTLS

Sender Email Address: john@myserver.com
Authentication Mode: None SMTP
Sender User Name: john@myserver.com
Sender Password: *****

Receiver #1 Email Address: mary@mailserver.com
Receiver #2 Email Address:
< Prev Next > Cancel

- **Confirm Settings**

The last step shows the configuration of your camera. When you confirm the settings, click **Apply** to finish the wizard and reboot the camera. Otherwise, click **Prev** to go back to the previous step(s) and change the settings; or click **Cancel** to end the wizard and discard the changes.

Confirm Settings	
Camera Name:	TV-IP252P
Location:	
IP Mode:	DHCP
IP Address:	192.168.10.80
Subnet Mask:	255.255.255.0
Default Gateway:	192.168.10.100
Primary DNS:	
Secondary DNS:	
SMTP Server Address:	myserver.com
Port Number:	25
SSL:	Enable
STARTTLS:	Enable
Sender Email Address:	john@myserver.com
Authentication Mode:	SMTP
Sender User Name:	john@myserver.com
Receiver #1 Email Address:	mary@mailserver.com
Receiver #2 Email Address:	
<input type="button" value=" < Prev"/> <input type="button" value=" Apply"/> <input type="button" value=" Cancel"/>	

Basic

The Basic menu contains three sub-menus that provide the System settings for the camera, such as the Camera Name, Location, Date & Time, and User management.

Basic >> System

- **Basic:** This item allows you to assign the camera name and location information.

- **Camera Name:** Enter a descriptive name for the camera, which is helpful to identify the camera easily while multiple cameras are connected within the network.
- **Location:** Enter a descriptive name for the location where is monitored by the camera.
- **Indication LED:** This item allows you to set the LED illumination as desired. There are two options: **Normal** and **OFF**.

Basic >> Date & Time

- **Date & Time:** Enter the correct date and time for the system.
 - **TimeZone:** Select the proper time zone for the region from the pull-down menu.
 - **Automatically adjust clock for daylight saving time changes:** select this option for daylight saving
 - **Synchronize with PC:** Select this option and the date & time settings of the camera will be synchronized with the connected computer.
 - **Synchronize with NTP Server:** Select this option and the time will be synchronized with the NTP Server. You need to enter the IP address of the server and select the update interval in the following two boxes.
 - **Manual:** Select this option to set the **Date** and **Time** manually.

Basic >> User

- **Administrator:** To prevent unauthorized access to the camera's Web Configuration, you are strongly recommend to change the default administrator password. Type the administrator password twice to set and confirm the password.
- **General User**
 - **User Name:** Enter the user's name you want to add to use the camera.
 - **Password:** Enter the password for the new user. When you are finished, click **Add/Modify** to add the new user to the camera. To modify the user's information, select the one you want to modify from **UserList** and click **Add/Modify**.
 - **UserList:** Display the existing users of the camera. To delete a user, select the one you want to delete and click **Delete**.
- **Guest**
 - **User Name:** Enter the guest's name you want to add to use the camera.
 - **Password:** Enter the password for the new guest.
 - **UserList:** Display the existing guests of the camera. To delete a user, select the one you want to delete and click **Delete**.

NOTE: The "General User" is allowed to access the camera and control the Function buttons on the Main screen of the Web Configuration.; the "Guest" can only view the live view image from the Main screen while accessing the camera. Only the "Administrator" is allowed to configure the camera through the Web Configuration.

- **Direct Video Stream Authentication:**

To stream the video directly without going through the configuration page, you can access it via Internet.

- **Enable:** User needs to enter user name and password to stream the camera.
- **Disable:** User can stream the camera without entering the user name and password.

Examples of the direct link to video:

MPEG4 Mode

http://camera_ip_address:port number/mpgview.htm

MJPEG Mode

http://camera_ip_address:port number/jpgview.htm

NOTE This feature is enabled by default, and for security reason, it is recommended to have the feature enabled at all time.

Network

The Network menu contains two sub-menus that provide the networking settings for the camera, such as the IP Setting, DDNS Setting, UPnP, Bonjour, Port Number and IP Filter.

The screenshot displays the Network configuration interface for a TRENDnet PoE Dome Internet Camera TV-IP252P. The interface is divided into several sections:

- IP Settings:**
 - DHCP
 - Static IP
 - IP: 192 . 168 . 10 . 30
 - Subnet Mask: 255 . 255 . 255 . 0
 - Default Gateway: 192 . 168 . 10 . 1
 - Primary DNS: [] . [] . [] . []
 - Secondary DNS: [] . [] . [] . []
 - PPPoE
 - User Name: [] [] [] [] [] [] [] [] [] []
 - Password: [] [] [] [] [] [] [] [] [] []
- DDNS Setting:**
 - Enable
 - Provider: www.dyndns.com
 - Host Name: [] [] [] [] [] [] [] [] [] []
 - User Name: [] [] [] [] [] [] [] [] [] []
 - Password: [] [] [] [] [] [] [] [] [] []
- UPnP:** Enable
- UPnP Port Forwarding:** Enable
- Bonjour:**
 - Enable
 - Friendly Name: [] [] [] [] [] [] [] [] [] []
- Ports Number:**
 - HTTP Port: 80 (default: 80)
 - RTSP Port: 554 (default: 554)

At the bottom of the configuration area, there are "Apply" and "Cancel" buttons. The footer of the page reads "Copyright © 2012 TRENDnet. All Rights Reserved."

Network >> Network

- **IP Setting:** This item allows you to select the IP address mode and set up the related configuration.
 - **DHCP:** Select this option when your network uses the DHCP server. When the camera starts up, it will be assigned an IP address from the DHCP server automatically. This is the default IP setting on the camera.

- **Static IP:** Select this option to assign the IP address for the camera directly. You can use IP Setup to obtain the related setting values.

IP	Enter the IP address of the camera. The default setting is 192.168.10.30.
Subnet Mask	Enter the Subnet Mask of the camera. The default setting is 255.255.255.0.
Default Gateway	Enter the Default Gateway of the camera. The default setting is 192.168.10.1.
Primary/Secondary DNS	DNS (Domain Name System) translates domain names into IP addresses. Enter the Primary DNS and Secondary DNS that are provided by ISP.

- **PPPoE:** Select this option when you use a direct connection via the ADSL modem. You should have a PPPoE account from your Internet service provider. Enter the **User Name** and **Password**. The camera will get an IP address from the ISP as starting up.

NOTE: Once the camera get an IP address from the ISP as starting up, it automatically sends a notification email to you. Therefore, when you select PPPoE as your connecting type, you have to set up the email or DDNS configuration in advance.

- **DDNS Setting:** With the Dynamic DNS feature, you can assign a fixed host and domain name to a dynamic Internet IP address. To set up the DDNS:
 1. Select the **Enable** option to enable this feature.
 2. Select the **Provider** from the pull-down list.
 3. Enter the required information in the **Host Name**, **User Name**, and **Password** boxes.

NOTE: You have to sign up for DDNS service with the service provider before configuring this feature.

- **UPnP:** The camera supports UPnP (Universal Plug and Play), which is a set of computer network protocols that enable the device-to-device interoperability. In addition, it supports port auto mapping function so that you can access the camera if it is behind an NAT router or firewall.

Select the **Enable** option to enable this feature.

- **UPnP Port Forwarding:** select this option to have the port forward to router.
- **Bonjour:** The devices with Bonjour will automatically broadcast their own services and listen for services being offered for the use of others. If your browser with Bonjour, you can find the camera on your local network without knowing its IP address.
The Apple Safari is already with Bonjour. You can download the complete Bonjour for Internet Explorer browser from Apple's web site by visiting <http://www.apple.com/bonjour/>.
- **Ports Number**
 - **HTTP Port:** The default HTTP port is **80**.
 - **RTSP Port:** Configure the transmission of streaming data within the network. The default RTSP (Real Time Streaming Protocol) port is **554**.

NOTE: If the camera is behind an NAT router or firewall, the suggested to be used is from 1024 to 65535.

Network >> IP Filter

The IP Filter setting allows the administrator of the camera to limit the users within a certain range of IP addresses to access the camera.

To disable this feature, select the **Disable** option; otherwise, select the **Accept** option to assign the range of IP addresses that are allowed to access the camera, or

select the **Deny** option to assign the range of IP addresses that are blocked to access the camera.

- **Disable:** Select this option to disable the IP Filter function of the camera.
- **Accept**
 - Assign a range of IP addresses that are allowed to access the camera by entering the **Start IP address** and **End IP address** options. When you are finished, click **Add** to save the range setting. You can repeat the action to assign multiple ranges for the camera.
For example, when you enter 192.168.10.50 in Start IP Address and 192.168.10.70 in End IP Address, the user whose IP address located within 192.168.10.50 ~ 192.168.10.70 will be allowed to access the camera.
- **Accept IP List:** The list displays the range setting(s) of IP addresses that are allowed to access the camera. To clear the setting, select a range of IP addresses from the list and click **Delete**.
- **Deny**
 - Assign a range of IP addresses that are blocked to access the camera by entering the **Start IP address** and **End IP address** options. When you are finished, click **Add** to save the range setting. You can repeat the action to assign multiple ranges for the camera.
For example, when you enter 192.168.10.50 in Start IP Address and 192.168.10.70 in End IP Address, the user whose IP address located within 192.168.10.50 ~ 192.168.10.70 will not be allowed to access the camera.
- **Deny IP List:** The list displays the range setting(s) of IP addresses that are blocked to access the camera. To clear the setting, select a range of IP addresses from the list and click **Delete**.

Video & Audio

The Video & Audio menu contains four sub-menus that provide the video and audio settings for the camera.

Video & Audio >> Camera

Image Setting	
Brightness:	22 (0~100)
Saturation:	100 (0~100)
Sharpness:	30 (0~100) <input type="button" value="Default"/>
Mirror:	<input type="checkbox"/> Vertical <input type="checkbox"/> Horizontal
<input type="button" value="Apply"/> <input type="button" value="Cancel"/>	

- **Image Setting**

- **Brightness:** Adjust the brightness level from 0 ~ 100.
- **Saturation:** Adjust the colors level from 0 ~ 100.
- **Sharpness:** Adjust the sharpness level from 0 ~ 100.
Click **Default** to restore the default settings of the three options above.
- **Mirror:** Select **Vertical** to mirror the image vertically, or select **Horizontal** to mirror the image horizontally.

Video & Audio >> Video

TRENDNET PoE Dome Internet Camera TV-IP252P
Location: 2012/07/30 13:12:42

Video & Audio » Video

MPEG4

Video Resolution: VGA
Video Quality: Highest
Frame Rate: 30 fps

MJPEG

Video Resolution: VGA
Video Quality: High
Frame Rate: 30 fps

3GPP

Setting: Disable
 3GPP Without Audio
 3GPP With Audio

Copyright © 2012 TRENDnet. All Rights Reserved.

- **MPEG4**

- **Video Resolution:** Select the desired video resolution from the three formats: **VGA**, **QVGA**, and **QQVGA**. The higher setting (VGA) obtains better video quality while it uses more resource within your network.
- **Video Quality:** Select the desired image quality from five levels: **Lowest**, **Low**, **Medium**, **High**, and **Highest**.
- **Frame Rate:** Select a proper setting depending on your network status.

- **MJPEG**

- **Video Resolution:** Select the desired video resolution from the three formats: **VGA**, **QVGA**, and **QQVGA**. The higher setting (VGA) obtains better video quality while it uses more resource within your network.
- **Video Quality:** Select the desired image quality from five levels: **Lowest**, **Low**, **Medium**, **High**, and **Highest**.
- **Frame Rate:** Select a proper setting depending on your network status.

- **None IE Browser Viewer:** Select the proper mode for viewing image while using none IE browser: **Java Applet**, **Still Image**, or **Server Push**.

NOTE: The camera supports both MPEG4 and MJPEG compression. MJPEG capture the images in JPEG format, which require higher bandwidth to view smooth video. The administrator can control the bandwidth of each connection well through the setting options above.

- **3GPP:** The camera supports 3GPP specification. To disable this feature, select the **Disable** option; otherwise, select **3GPP Without Audio** or **3GPP With Audio** to transfer the video clips without or with audio.

If you use a mobile phone that supports 3GPP, you can also view the real-time streaming image captured by the camera on your phone (with the default player on the phone) by entering the RTSP link:
rtsp://(IP address of the camera)/3gp.

Video & Audio >> Audio

Video & Audio » Audio

Camera Microphone In

Enable

Camera Speaker Out

Enable

Volume: 90

Apply Cancel

- **Camera Microphone In:** Select the **Enable** option to enable the camera's audio function, so that you can receive the on-site sound and voice from the camera.
- **Camera Speaker Out:** Select the **Enable** option to enable the camera's external speaker function, so that the connected speaker can play the sound and voice through the camera.

You can set the speaker's volume by entering the proper value in the **Volume** option. The default setting is **90**.

Video & Audio >> Text Overlay

Text Overlay » Text Overlay

Overlay Setting


Include Date & Time

Include Text Fixed Dome Network Camera

Enable Opaque

Apply Cancel

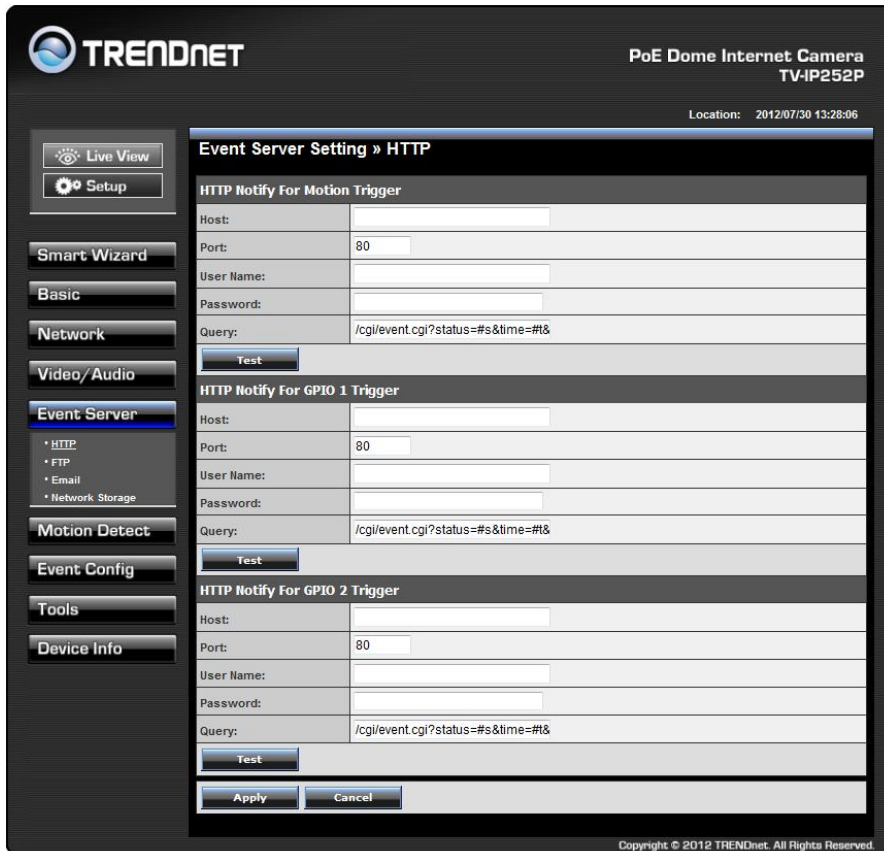
- **Include Date & Time:** Select this option to display the date & time information on the live view image.
- **Include Text:** Select this option and enter your heading text in the box to display the text information on the live view image.
- **Enable Opaque:** Select this option to display the overlay text with a background color.

For example, when you select the **Include Date & Time** and **Include Text** options and click **Apply**, you can see the related information displayed on the live view image when you click the  **Live View** button.



Event Server

The Event Server menu contains three sub-menus that allow you to upload images to FTP, send emails that include still images, and store the images to a NAS system.



When you complete the required settings for HTTP Notify for Motion Trigger, FTP, Email, or Network Storage, click **Test** to test the related configuration is correct or not. Once the camera connects to the server successfully, click **Apply**.

HTTP Notify For Motion Trigger

Event Server Setting » HTTP	
HTTP Notify For Motion Trigger	
Host:	<input type="text"/>
Port:	80
User Name:	<input type="text"/>
Password:	<input type="text"/>
Query:	/cgi/event.cgi?status=#s&time=#t
<input type="button" value="Test"/>	
<input type="button" value="Apply"/> <input type="button" value="Cancel"/>	

Send the query parameter via an HTTP notification when an event is triggered.

- Host: Enter the IP of the HTTP server
- Port: Enter the Port number of the HTTP server
- User Name: Enter the username of the HTTP server
- Password: Enter the password of the HTTP server
- Query: Enter the query parameter for the request if necessary

Example:

Host: 192.168.10.1

Port: 80

Query: xxx.cgi?name1=value1&name2=value2

Example: cgi/event.cgi?status=#s&time=#t&model=modelname

Result: <http://192.168.10.1:80/cgi/event.cgi?status=#s&time=#t&model=modelname>

Event Server Setting >> FTP

Event Server Setting » FTP	
FTP	
Host Address:	65.64.63.62
Port Number:	21
User Name:	ftpserver
Password:	••••••••
Directory Path:	test
Passive Mode:	<input checked="" type="checkbox"/> Enable
FTP Upload With:	<input checked="" type="radio"/> One Snapshot <input type="radio"/> Pre-event <input type="text" value="3"/> sec(s) Post-event <input type="text" value="2"/> sec(s)
<input type="button" value="Test"/> <input type="button" value="Apply"/> <input type="button" value="Cancel"/>	

- FTP
 - **Host Address:** Enter the IP address of the target FTP server.
 - **Port Number:** Enter the port number used for the FTP server.
 - **User Name:** Enter the user name to login into the FTP server.
 - **Password:** Enter the password to login into the FTP server.
 - **Directory Path:** Enter the destination folder for uploading the images. For example, /test.
 - **Passive Mode:** Select the **Enable** option to enable passive mode.
 - **FTP Upload With:** Set the format of the image that is to be uploaded to the FTP server. You can set the format as **One Snapshot** or images containing **Pre-event** (0 ~ 3 seconds) and **Post-event** (0 ~ 3 seconds).

Event Server Setting >> Email

Event Server Setting » Email	
Email	
SMTP Server Address:	myserver.com
Port Number:	25 <input checked="" type="checkbox"/> This server requires an encrypted connection (SSL) <input checked="" type="checkbox"/> STARTTLS
Sender Email Address:	john@myserver.com
Authentication Mode:	<input type="radio"/> None <input checked="" type="radio"/> SMTP
Sender User Name:	john@myserver.com
Sender Password:	••••••••
Receiver #1 Email Address:	mary@mailserver.com
Receiver #2 Email Address:	
Send Email With:	<input checked="" type="radio"/> One Snapshot <input type="radio"/> Pre-event <input type="text" value="3"/> sec(s) Post-event <input type="text" value="2"/> sec(s)
Wan IP Change Notify:	<input type="checkbox"/>
<input type="button" value="Test"/> <input type="button" value="Apply"/> <input type="button" value="Cancel"/>	

- Email
 - **SMTP Server Address:** Enter the mail server address. For example, myserver.com. If you are using a free mail service (e.g. Google Gmail®, Yahoo®, Hotmail®), please enter the SMTP server address from the service provider.
 - **Port Number:**
 - Assign the port number in the text box. The default port is 25. For the free mail service, please enter the correct port number from the service provider.
 - **SSL:** If the mail server requires an encrypted connection, you should select the **SSL** option.
 - **STARTTLS** is an extension to plain text communication protocols. It offers a way to upgrade a plain text connection to an encrypted connection.

- **Sender Email Address:** Enter the email address of the user who will send the email. For example, John@myserver.com.
- **Authentication Mode:** Select **None** to disable the authentication feature, or select **SMTP** and then enter the **User Name** and **Password** according to the mail server configuration.
- **Sender User Name:** Enter the user name to login the mail server.
- **Sender Password:** Enter the password to login the mail server.
- **Receiver #1 Email Address:** Enter the first email address of the user who will receive the email.
- **Receiver #2 Email Address:** Enter the second email address of the user who will receive the email.
- **Send Email With:** Set the format of the image that is to be sent by the email. You can set the format as **One Snapshot** or images containing **Pre-event** (0 ~ 3) seconds and **Post-event** (0 ~ 3) seconds.
- **WAN IP Change Notify:** Select the option to enable the system to notify you when the WAN IP address changed.

- **Path:** Assign the path for uploading the files on the Network Storage server. For example, Test.
- **User Name:** Enter the user name to login into the Network Storage server.
- **Password:** Enter the password to login into the Network Storage server.
- **Split By:** When the file is too large to upload smoothly, use this option to split it by selecting **File Size** or **Recording Time**.
- **When Storage Full:** Select **Stop Recording** or **Recycle - Delete Oldest Folder** when the storage space on the Network Storage server is full.
- **Encode Format:** Select **MPEG4** or **H.264** as the encode format while recording.
- **File Format:** Select **MP4** or **AVI** as the file format while recording.

Event Server Setting >> Network Storage

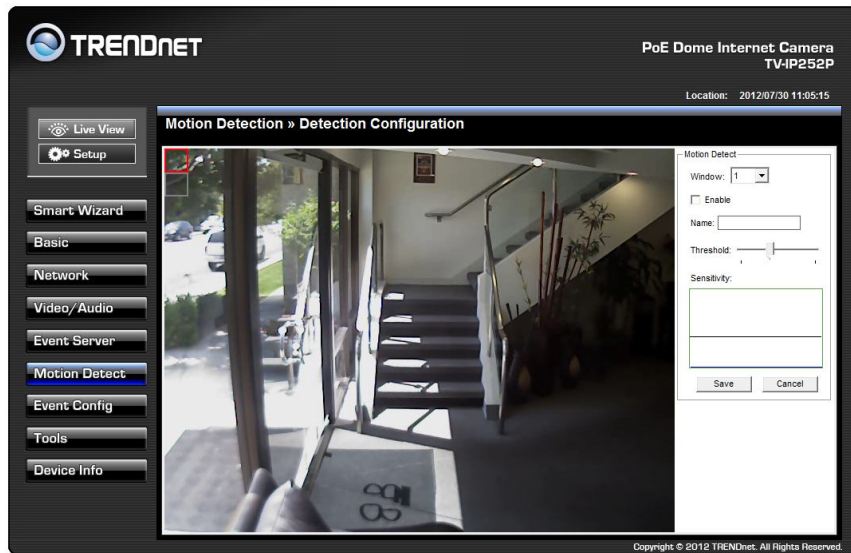
Event Server Setting » Network Storage	
Network Storage	
Samba Server Address:	192.168.10.20
Share:	TV-IP252P
Path:	Test
User Name:	Trendnet <input type="checkbox"/> Anonymous
Password:	••••••••
Split By:	<input checked="" type="radio"/> File Size 100 (MB) <input type="radio"/> Recording Time 30 (Minutes)
When Disk Full:	<input type="radio"/> Stop Recording <input checked="" type="radio"/> Recycle - Delete Oldest Folder
<input type="button" value="Test"/> <input type="button" value="Apply"/> <input type="button" value="Cancel"/>	

- **Network Storage**
 - **Samba Server Address:** Enter the IP address of the Network Storage server.
 - **Share:** Assign the folder on the Network Storage server to share the files to users.

Motion Detect

The Motion Detect menu contains the command and option that allow you to enable and set up the motion detection feature of the camera. The camera provides two detecting areas.

To enable the detecting area, select **Window 1** or **2** from the pull-down list, and then select **Enable**. When the detecting area is enabled, you can use the mouse to move the detecting area and change the area coverage.

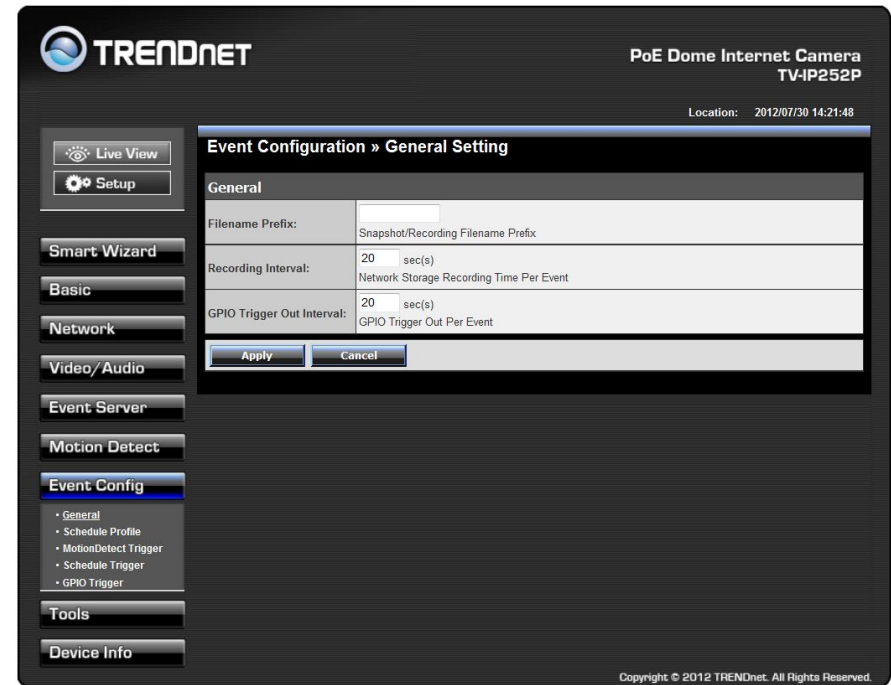


- **Name:** Assign a name to the detecting area.
- **Threshold:** Move the slide bar to adjust the level of motion detection on recording video.

NOTE: Sliding the Threshold bar to the right will decrease the sensitivity of motion detection; sliding the Threshold bar to the left will increase the sensitivity of motion detection.

Event Config

The Event Config menu contains five sub-menus that provide the commands to configure event profiles.



Event Configuration >> General Setting

- **General**

- **Snapshot/Recording Subfolder:** You can assign a given subfolder to each new captured file. Otherwise, leave this option blank to use the default setting.
- **Network Storage Recording Time Per Event:** Limit the recording time while you are using the Network Storage solution.

Event Configuration >> Schedule Profile

- **Schedule Profile:** This sub-menu displays the scheduled profile(s). To customize the profile, click **Add** and then enter a descriptive name for the profile in the prompt dialog window. After entering the profile name, click **OK** and the profile is added to the Schedule Profiles list.

To delete the profile, select the profile in the list and click **Delete**.

- **Profile Name:** Display the profile name that you select in the Schedule Profiles list.
- **Weekdays:** Select the weekday(s) that you want to separately assign in the schedule profile. The weekday that has been assigned will be displayed with green color.
- **Time List:** Display the time period that you have assigned within the selected weekday. To assign the same time period to every weekday, click **Add this to all weekdays**; click **Delete this from all weekdays** to remove the selected time period from every weekday. Click **Delete** to remove the selected time period.
- **Start/End Time:** Enter the start and end time and then click **Add** to assign a time period within in the selected weekday.

Event Configuration >> Motion Detect Trigger

- **Motion Detect Profile:** Select the **Enable** option to enable the trigger function of the camera, so that you can send captured images within the detecting area to the FTP server, email receiver, or the Network Storage server. You have to configure corresponding settings, such as FTP server and email server, to enable this feature. Please note that you have to configure the related settings before enabling these features.
 - **Schedule Profile:** Select a schedule profile from the pull-down list.
 - **Action:** Select the destination that the captured images will be sent to: **Record to Network Storage**, **Send Email**, **FTP Upload**, or **HTTP Notify**.

Event Configuration >> Schedule Trigger

You can separately configure the schedule for trigger function of the camera by **Email**, **FTP**, or **Network Storage**. Select the **Enable** option on each item, and then select a **Schedule Profile** from the pull-down list and set the **Interval** time.

NOTE: If the setting value of the **Network Storage Recording Time Per Event** option in General Setting is longer than the Interval time in Network Storage Schedule, the recorded file will be a continuous video clip. For example, if you set the **Network Storage Recording Time Per Event** as 10 seconds and the **Interval** as 5 seconds, recorded file becomes a non-stop video clip because the camera will record a 10-second video clip every 5 seconds.

Event Configuration >> GPIO Trigger

Event Configuration » GPIO Trigger	
GPIO Trigger	
Enable Trigger In 1	<input type="checkbox"/>
Schedule Profile:	always ▾
Action:	<input type="checkbox"/> Trigger Out
	<input type="checkbox"/> Record to Network Storage
	<input type="checkbox"/> Send Email
	<input type="checkbox"/> FTP Upload
	<input type="checkbox"/> HTTP Notify
Enable Trigger In 2	<input type="checkbox"/>
Schedule Profile:	always ▾
Action:	<input type="checkbox"/> Trigger Out
	<input type="checkbox"/> Record to Network Storage
	<input type="checkbox"/> Send Email
	<input type="checkbox"/> FTP Upload
	<input type="checkbox"/> HTTP Notify
<input type="button" value="Apply"/> <input type="button" value="Cancel"/>	

The GPIO trigger function of the camera allows you to set Trigger Out function or send captured images within the detecting area to the Network Storage server, email, FTP or HTTP notify. You have to configure corresponding settings, such as Network Storage Server, FTP server and email server, to enable this feature.

- **Enable Trigger In 1 or 2:** Select the option to enable the GPIO trigger function of the camera. Then, complete the following options
 - **Schedule Profile:** Select a schedule profile (**Always**, or the profile you have set) from the pull-down list.
 - **Action:** Select the **Trigger Out** function or select the destination of the captured image (**Record to Network Storage**, **Send Email**, **FTP Upload** or **HTTP Notify**).

Tools

The Tools menu provides the commands that allow you to restart or reset the camera. You can also backup and restore your configuration, and upgrade the firmware for the camera.

- **Factory Reset:** Click **Reset** to restore all factory default settings for the camera.
- **System Reboot:** Click **Reboot** to restart the camera just like turning the device off and on. The configuration of the camera will be retained after rebooting.
- **Configuration:** You can save your camera configuration as a backup file on your computer. Whenever you want to resume the original settings, you can restore them by retrieving the backup file.
 - **Backup:** Click **Get the backup file** to save the current configuration of the camera.
 - **Restore:** Click **Browse** to locate the backup file and then click **Restore**.

- **Update Firmware:** You can upgrade the firmware for your camera once you obtained a latest version of firmware.
 - **Current Firmware Version:** This item displays the current firmware version.
 - **Select the firmware:** Click **Browse** to locate the backup file and then click **Update**.

NOTE: Make sure to keep the camera connected to the power source during the process of upgrading firmware. Otherwise, the camera might be damaged because of failure of upgrading firmware.

Device Info

The Information menu displays the current configuration and events log of the camera.

Device Info >> Device Info

Display the Basic, Video & Audio, and Network settings of the camera.

Device Info >> System Log

The Logs table displays the events log recorded by the system.

Time	Event
Jul 30 16:51:22	NTP date/time setting finish
Jul 30 16:51:07	NTP date/time setting finish
Jul 30 12:56:31	Camera service start

How to setup/access the camera behind a Router

You can either setup the Dynamic DNS connection via camera itself or your home router. An account from any of the listed DDNS providers is required prior to this operation.

Configure DDNS on your Camera

1. Go to Camera's **DDNS Setting** page, click **Enable** to activate the feature. Then select a DDNS provider from the list.

DDNS Setting:

Enable

Provider: www.dyndns.com

Host Name: www.dyndns.com

User Name: members.easyns.com

Password: web.easyns.com

2. Enter your DDNS's the Host Name, User Name and Password.

DDNS Setting:

Enable

Provider: www.dyndns.com

Host Name: trendnet.dyndns.org

User Name: trendnet

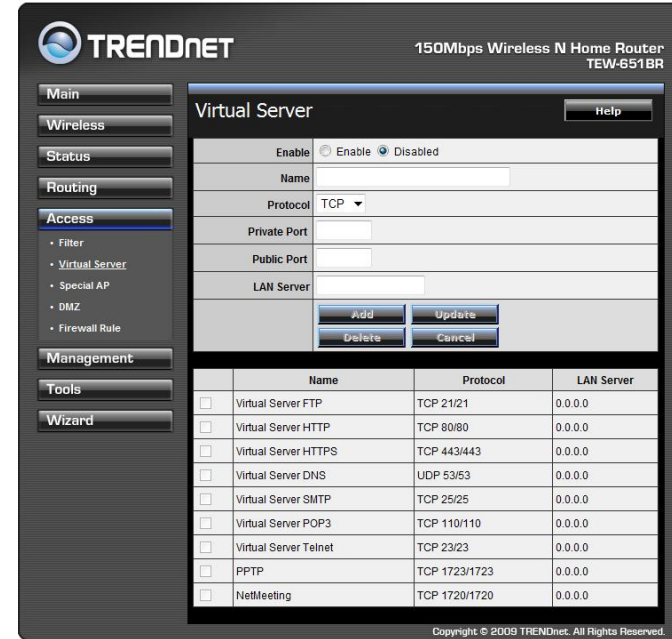
Password: ••••••••••

UPnP: Enable

Ports Number: HTTP Port 9000 (default: 80)

3. In the **Port Number** section, assign an HTTP port of the camera. The default HTTP Port on the camera is 80. The example shows above is using port number 9000.

4. Open another web browser and go to your Router's Web Configuration page. (In the example, TRENDnet's TEW-651BR Wireless N router is used)



- Go to **Virtual Server*** section and create a new entry.
Enable: Click **Enable**
Name: Enter the application name (eg. CameraName)
Protocol: Select **TCP**
Private Port: The HTTP port that you assign on your Camera.
Public Port: The port used on remote side to access to your Camera.
LAN Server: The local IP address of your Camera.

Virtual Server		Help
Enable	<input checked="" type="radio"/> Enable <input type="radio"/> Disabled	
Name	IP Camera	
Protocol	TCP	
Private Port	9000	
Public Port	9000	
LAN Server	192.168.1.101	
<input type="button" value="Add"/> <input type="button" value="Update"/>		
<input type="button" value="Delete"/> <input type="button" value="Cancel"/>		

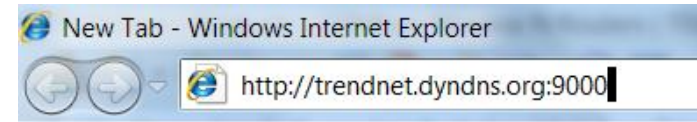
Then click **Add** to add the application.

* Please refer to your router's user's manual for detail **Virtual Server** setting. Some router might use **Port Forwarding** or **Special applications** for this function. The setup steps should be very similar.

	Name	Protocol	LAN Server
<input type="checkbox"/>	Virtual Server FTP	TCP 21/21	0.0.0.0
<input type="checkbox"/>	Virtual Server HTTP	TCP 80/80	0.0.0.0
<input type="checkbox"/>	Virtual Server HTTPS	TCP 443/443	0.0.0.0
<input type="checkbox"/>	Virtual Server DNS	UDP 53/53	0.0.0.0
<input type="checkbox"/>	Virtual Server SMTP	TCP 25/25	0.0.0.0
<input type="checkbox"/>	Virtual Server POP3	TCP 110/110	0.0.0.0
<input type="checkbox"/>	Virtual Server Telnet	TCP 23/23	0.0.0.0
<input type="checkbox"/>	PPTP	TCP 1723/1723	0.0.0.0
<input type="checkbox"/>	NetMeeting	TCP 1720/1720	0.0.0.0
<input checked="" type="checkbox"/>	IP Camera	TCP 9000/9000	192.168.1.101

Copyright © 2009 TRENDnet. All Rights Reserved.

- Open another web browser and enter your DDNS domain and camera's port number.
<http://yourDomainName:PortNumber>



- Camera's login page will appear.

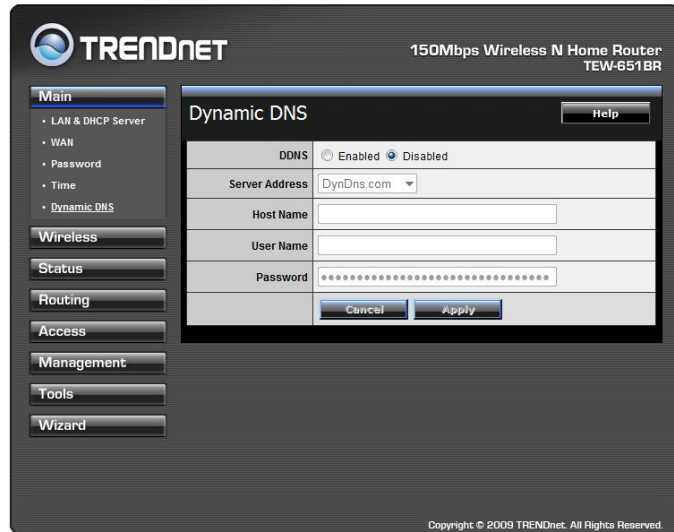
Configure DDNS on your router

- Go to Camera's **DDNS** → **Ports Number** section, assign a HTTP port for your camera and click **Apply**.

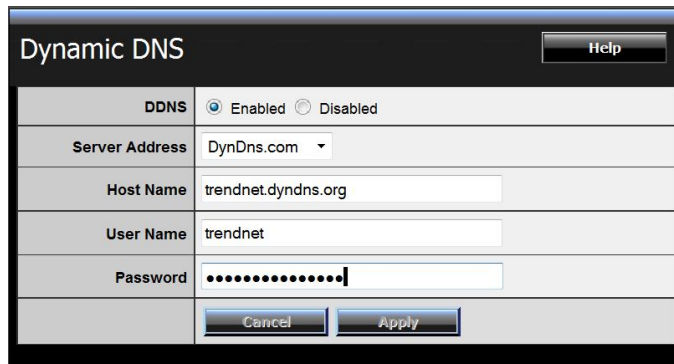
DDNS Setting:	<input type="checkbox"/> Enable Provider: <input type="text" value="www.dyndns.com"/> Host Name: <input type="text"/> User Name: <input type="text"/> Password: <input type="text"/>
UPnP:	<input type="checkbox"/> Enable
Ports Number:	HTTP Port: <input type="text" value="9000"/> (default: 80)
<input type="button" value="Apply"/> <input type="button" value="Cancel"/>	

- Login to your router's web configuration page.

3. Find the **Dynamic DNS** configuration section.



4. Enable DDNS, fill out the following information and then click **Apply**.



5. Go to **Virtual Server*** section and create a new entry.

Enable: Click **Enable**

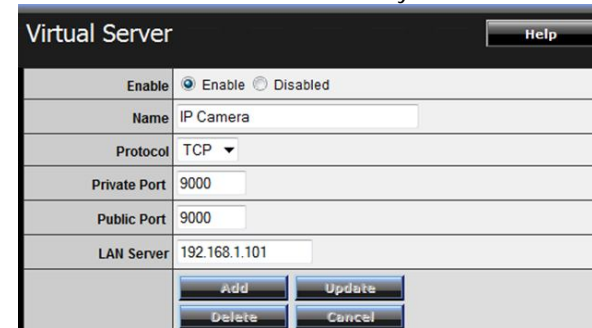
Name: Enter the application name (eg. Camera Name)

Protocol: Select **TCP**

Private Port: The HTTP port that you assign on your Camera.

Public Port: The port used on remote side to access to your Camera.

LAN Server: The local IP address of your Camera.

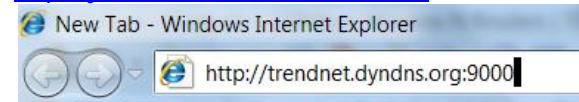


Click **Add** to add the application.

* Please refer to your router's user's manual for detail **Virtual Server** setting. Some router might use **Port Forwarding** or **Special applications** for this function. The setup steps should be very similar.

6. Open another web browser and enter your DDNS domain and camera's port number.

<http://yourDomainName:PortNumber>



7. The camera login page will appear.

Technical Specifications

Camera	
General	Sensor: 1/4" Megapixel CMOS sensor Max. Resolution: 640 x 480 pixels Board Lens Focal Length: 3.58 mm Aperture (F/No): F2.0 +/- 5% Minimum illumination: 0.1 Lux @ F2.0 Viewing Angle <ul style="list-style-type: none"> - Horizontal: 69.3 degree - Vertical: 58.1 degree - Diagonal: 44.8 degree
Audio	Microphone In port (microphone sold separately) Audio out port: Mono (speakers sold separately) Sensitivity: -42dB +/- 3dB Frequency: 100~10,000Hz S/N: 65dB Format: PCM/AMR
Pan/Tilt (Manually)	Manually adjust camera to final fixed position: Pan: -175° ~ +175° Tilt: 20 ~ 90° Rotate: -90° ~ +90°
Hardware	
Network	IEEE 802.3u 10/100Mbps Fast Ethernet IEEE 802.3af PoE
LED	Power, Link/Act (can turn off LEDs)
Reset Button	Reboot or restore to factory default
Power Consumption	8 watts max.

Power	Input: 100 ~ 240V AC , 0.5A, 50~60Hz Output: 12VDC 1.5A external power adapter (for non-PoE installations)
Dimension	140 x 120 x 140 mm (5.2 x 4.7 x 5.5 in.)
Weight	600 g (21.2oz.)
Temperature	Operating: 0°C ~ 45°C (32°F ~ 113°F) Storage: -15°C ~ 60°C (5°F ~ 140°F)
Humidity	Max. 90% (non-condensing)
Certifications	CE, FCC
Requirement	
Management Interface	Internet Explorer 7.0 or above
To Run SecurView Pro	Windows 7 (32/64-bit), Vista (32/64-bit), XP (32/64-bit) Windows Server 2003, 2008
SecurView Pro	Channel: supports up to 32 cameras Record/Playback/Motion Detection/Audio
Network Protocols	TCP/IP, IPv4, UDP, ICMP, DHCP, NTP, DNS, DDNS, SMTP, FTP, HTTP, HTTPS, Samba, PPPoE, UPnP, Bonjour, RTP, RTSP, RTCP, SSL, and 3GPP
Management	
Remote	Remote management supported
Backup / Restore	Save/retrieve configuration files
Settings	
Image	Brightness, saturation, sharpness, and mirror (horizontal/vertical)
Video	Encoding type: MPEG-4, MJPEG Compression: 5 levels

	Resolution/Frame Rate: VGA (640x480) up to 30fps QVGA (320x240) up to 30fps QQVGA (160x120) up to 30fps
Recording / snapshot	Recording type: continuous, schedule, motion detection, or snapshot
Event Management	Event trigger: motion, schedule Store video file to storage device
Overlay	Text overlay: time, date, and text
Port Settings	HTTP port: 80 (default) RTSP port: 554 (default)
Digital Zoom	3x
Dynamic DNS	Yes
Time	Synchronize with NTP server or set time/date manually
Email	Supports up to 2 destination accounts
System Log	100 entries (max.)

Troubleshooting

- 1. I inserted the Utility CD-ROM into my computer's CD-ROM Drive but the installation menu does not appear automatically. What should I do?**

Windows 7

If the installation menu does not appear automatically, click on the Windows Icon on the bottom left hand corner of the screen, click the "Search programs and files" box, and type D:\autorun.exe, where "D" in "D:\autorun.exe" is the letter assigned to your CD-ROM Drive, and then press the ENTER key on your keyboard .

Windows Vista

If the installation menu does not appear automatically, click Start, click the Start Search box, and type D:\autorun.exe where "D" in "D:\autorun.exe" is the letter assigned to your CD-ROM Drive, and then press the ENTER key on your keyboard.

Windows XP

If the window does not appear automatically, click Start, click Run and type D:\autorun.exe where "D" in "D:\autorun.exe" is the letter assigned to your CD-ROM Drive, and then press the ENTER key on your keyboard.

- 2. IP Setup is unable to detect my camera. What should I do?**
 - Verify that you have followed all the steps in Section 2: Hardware Installation.
 - Disable any software firewall programs such as ZoneAlarm or Norton Internet Security. If you are using Windows 7, Vista or XP, disable the built in firewall.
 - Click on Search in IPSetup.
 - Reset the IP Camera by remove the top cover and press the reset button



3. I do not have a DHCP server or DHCP is disable on my network and I am unable to configure the TV-IP252P. What should I do?

- a. Go to the TCP/IP settings on your computer and assign a static IP address on your computer's network adapter in the subnet of 192.168.10.x. Since the default IP address of the TV-IP252P is 192.168.10.30, do not assign a static IP address of 192.168.10.30 on your computer's network adapter.
- b. Open Internet Explorer and enter <http://192.168.10.30> into the address bar.

4. The image is blurry. How can I adjust the focus on the IP camera?

Remove the cover on the top of the TV-IP252P. You can adjust the Internet Camera's focus by rotating the Lens (Please refer to Cameo Focus on page 6 for more detail).



5. When I click on Live View the image does not load?

- a. Make sure that you are using a browser that supports ActiveX.
- b. Make sure that ActiveX is installed.

6. Can I use the TV-IP252P outdoor?

The TV-IP252P was designed for indoor use only.

Limited Warranty

TRENDnet warrants its products against defects in material and workmanship, under normal use and service, for the following lengths of time from the date of purchase.

TV-IP252P – 3 Years Limited Warranty

AC/DC Power Adapter, Cooling Fan, and Power Supply carry 1 year warranty.

If a product does not operate as warranted during the applicable warranty period, TRENDnet shall reserve the right, at its expense, to repair or replace the defective product or part and deliver an equivalent product or part to the customer. The repair/replacement unit's warranty continues from the original date of purchase. All products that are replaced become the property of TRENDnet. Replacement products may be new or reconditioned. TRENDnet does not issue refunds or credit. Please contact the point-of-purchase for their return policies.

TRENDnet shall not be responsible for any software, firmware, information, or memory data of customer contained in, stored on, or integrated with any products returned to TRENDnet pursuant to any warranty.

There are no user serviceable parts inside the product. Do not remove or attempt to service the product by any unauthorized service center. This warranty is voided if (i) the product has been modified or repaired by any unauthorized service center, (ii) the product was subject to accident, abuse, or improper use (iii) the product was subject to conditions more severe than those specified in the manual.

Warranty service may be obtained by contacting TRENDnet within the applicable warranty period and providing a copy of the dated proof of the purchase. Upon proper submission of required documentation a Return Material Authorization (RMA) number will be issued. An RMA number is required in order to initiate warranty service support for all TRENDnet products. Products that are sent to TRENDnet for RMA service must have the RMA number marked on the outside of return packages and sent to TRENDnet prepaid, insured and packaged appropriately for safe shipment. Customers shipping from outside of the USA and Canada are responsible for return shipping fees. Customers shipping from outside of the USA are responsible for custom charges, including but not limited to, duty, tax, and other fees.

WARRANTIES EXCLUSIVE: IF THE TRENDNET PRODUCT DOES NOT OPERATE AS WARRANTED ABOVE, THE CUSTOMER'S SOLE REMEDY SHALL BE, AT TRENDNET'S OPTION, REPAIR OR REPLACE. THE FOREGOING WARRANTIES AND REMEDIES ARE EXCLUSIVE AND ARE IN LIEU OF ALL OTHER WARRANTIES, EXPRESSED OR IMPLIED, EITHER IN FACT OR BY OPERATION OF LAW, STATUTORY OR OTHERWISE, INCLUDING WARRANTIES OF MERCHANTABILITY AND FITNESS FOR A PARTICULAR PURPOSE. TRENDNET NEITHER ASSUMES NOR AUTHORIZES ANY OTHER PERSON TO ASSUME FOR IT ANY OTHER LIABILITY IN CONNECTION WITH THE SALE, INSTALLATION MAINTENANCE OR USE OF TRENDNET'S PRODUCTS.

TRENDNET SHALL NOT BE LIABLE UNDER THIS WARRANTY IF ITS TESTING AND EXAMINATION DISCLOSE THAT THE ALLEGED DEFECT IN THE PRODUCT DOES NOT EXIST OR WAS CAUSED BY CUSTOMER'S OR ANY THIRD PERSON'S MISUSE, NEGLIGENCE, IMPROPER INSTALLATION OR TESTING, UNAUTHORIZED ATTEMPTS TO REPAIR OR MODIFY, OR ANY OTHER CAUSE BEYOND THE RANGE OF THE INTENDED USE, OR BY ACCIDENT, FIRE, LIGHTNING, OR OTHER HAZARD.

LIMITATION OF LIABILITY: TO THE FULL EXTENT ALLOWED BY LAW TRENDNET ALSO EXCLUDES FOR ITSELF AND ITS SUPPLIERS ANY LIABILITY, WHETHER BASED IN CONTRACT OR TORT (INCLUDING NEGLIGENCE), FOR INCIDENTAL, CONSEQUENTIAL, INDIRECT, SPECIAL, OR PUNITIVE DAMAGES OF ANY KIND, OR FOR LOSS OF REVENUE OR PROFITS, LOSS OF BUSINESS, LOSS OF INFORMATION OR DATA, OR OTHER FINANCIAL LOSS ARISING OUT OF OR IN CONNECTION WITH THE SALE, INSTALLATION, MAINTENANCE, USE, PERFORMANCE, FAILURE, OR INTERRUPTION OF THE POSSIBILITY OF SUCH DAMAGES, AND LIMITS ITS LIABILITY TO REPAIR, REPLACEMENT, OR REFUND OF THE PURCHASE PRICE PAID, AT TRENDNET'S OPTION. THIS DISCLAIMER OF LIABILITY FOR DAMAGES WILL NOT BE AFFECTED IF ANY REMEDY PROVIDED HEREIN SHALL FAIL OF ITS ESSENTIAL PURPOSE.

Governing Law: This Limited Warranty shall be governed by the laws of the state of California.

Some TRENDnet products include software code written by third party developers. These codes are subject to the GNU General Public License ("GPL") or GNU Lesser General Public License ("LGPL").

Go to <http://www.trendnet.com/gpl> or <http://www.trendnet.com> Download section and look for the desired TRENDnet product to access to the GPL Code or LGPL Code. These codes are distributed WITHOUT WARRANTY and are subject to the copyrights of the developers. TRENDnet does not provide technical support for these codes. Please go to <http://www.gnu.org/licenses/gpl.txt> or <http://www.gnu.org/licenses/lgpl.txt> for specific terms of each license.

V1.0R / 10.16.2012



Product Warranty Registration

Please take a moment to register your product online.
Go to TRENDnet's website at <http://www.trendnet.com/register>

TRENDnet
20675 Manhattan Place
Torrance, CA 90501. USA