

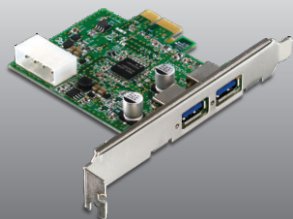


Guia de Instalação Rápida



TU3-H2PIE
1.01

Português	
1. Antes de Iniciar	1
2. Como Instalar	2
Technical Specifications	6
Troubleshooting	7



Conteúdo da Embalagem

- TU3-H2PIE
- CD-ROM de Driver
- Guia Multilínguas de Instalação Rápida

Requisitos Mínimos do Sistema

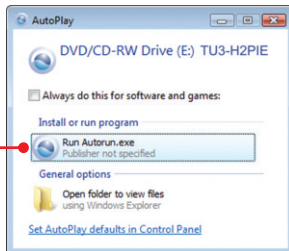
- Slot PCI Express 1.0a/2.0
- Unidade para CD-ROM
- Cabo USB 3.0
- CPU: 1GHz ou superior (Windows 7) / 800MHz ou superior (Windows Vista) / 300Mhz ou superior (Windows XP)
- Memória: 1GB RAM ou superior (Windows 7) / 512MB RAM ou superior (Windows Vista) / 256MB RAM ou superior (Windows XP)
- Windows 7(32/64-bit) / Vista(32/64-bit) / XP(32/64-bit)

2. Como Instalar

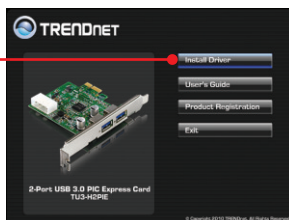
Importante! NÃO instalar o TU3-H2PIE até instruído a fazê-lo.

1. Insira o CD-ROM de Utilitários e Driver no Drive de CD-ROM do seu computador.

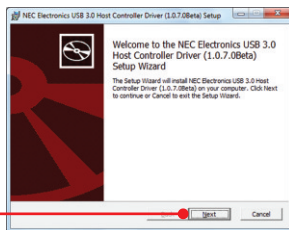
2. Clique em **Run Autorun.exe** (Windows 7/Vista somente).



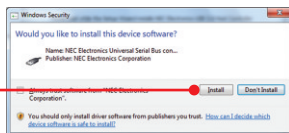
3. Clique **Install Driver** (Instalar Driver).



4. Clique **Next**. Então siga as instruções do InstallShield Wizard (Assistente de Instalação).



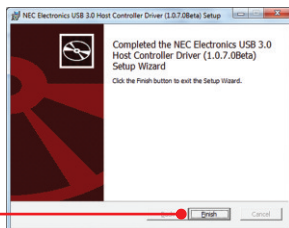
5. Clique **Install**.



6. Clique **Continue Anyway**
(Continuar mesmo assim)



7. Clique **Finish** (Finalizar).



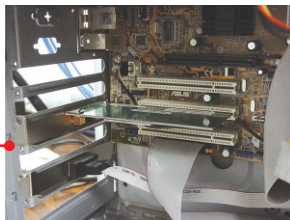
Nota: Favor recorrer ao manual do usuário de seu computador a respeito de instalação de hardware.

8. Desligue seu computador.



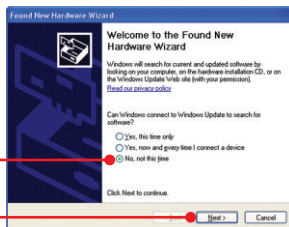
9. Abra a carcaça do seu computador.

10. Insira firmemente o adaptador PCIE em um slot PCIE disponível, e então ligue o computador e aguarde até aparecer a área de trabalho do Windows.

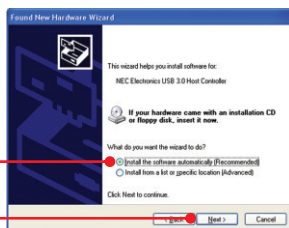


Nota: Em Windows 7 / Vista os drivers serão instalados automaticamente. Favor pular para o passo 16. para Windows XP continue pelo passo 11.

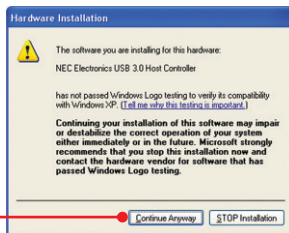
11. O **Found New Hardware Wizard** (Assistente de Instalação de Hardware Novo) vai aparecer. Selecione **No, not this time** (Não, não desta vez) e então clique **Next** (Próximo).



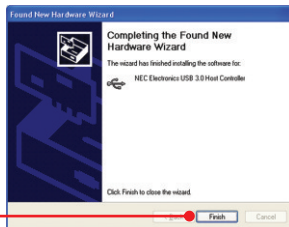
12. Clique **Install the software automatically** (Recommended) (Instalar o software automaticamente (Recomendado) e então clique **Next** (Próximo).



13. Clique **Continue Anyway** (Continuar mesmo assim).

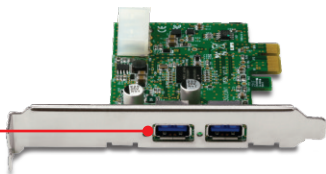


14. Clique **Finish** (Finalizar).



15. Repita os passos 11 a 14 para completar a instalação do TU3-H2PIE.

16. Conecte seu dispositivo USB a uma das portas USB do TU3-H2PIE.



Sua instalação agora está completa.

Para informações detalhadas sobre esta e outras configurações avançadas do **TU3-H2PIE**, favor recorrer ao Guia do Usuário incluído no CD-ROM de Utilitários & Driver ou ao website da TRENDnet em www.trendnet.com

Registre Seu Produto

Para garantir o alto nível do serviço e suporte ao consumidor, por favor tire um minuto para registrar seu produto Online em: www.trendnet.com/register Agradecemos por ter escolhido TRENDnet

Hardware	
Interface	USB 3.0 PCI Express Interface Revision 2.0 backwards compatible with version 1.0
Port	2 x USB 3.0 Port
Supported OS	Windows 7 (32/64-bit), Vista (32/64-bit), XP (32/64-bit)
Data Rate	Super speed: 5Gbps High speed: 480Mbps Full speed: 12Mbps Low speed: 1.5Mbps
Power Consumption	500mA (max) per port, BUS-powered
Power	5V DC, 2.5A external power adapter
Dimensions (L x W x D)	114 x 54 x 12mm (4.4 x 2.1 x 0.5 in.)
Weight	45g. (1.6oz.)
Temperature	5°C ~ 40°C (41°F ~ 104°F)
Humidity	90% (non-condensing)
Certification	CE, FCC

1. Eu inseri o CD-ROM do TU3-H3PC no Drive de CD-ROM do meu computador e o menu de instalação não apareceu automaticamente. O que devo fazer?

1. Para Windows 7, se o menu de instalação não aparecer automaticamente, clique no ícone do Windows na parte inferior esquerda da tela, clique na caixa "procurar programas e arquivos" e digite D:\Autorun.exe onde "D" em "D:\Autorun.exe" é a letra designada ao Drive de CD-ROM do seu computador. Aperte a tecla ENTER do seu teclado.
2. Para Windows Vista, se o menu de instalação não aparecer automaticamente, clique no botão Iniciar, clique na caixa Procurar e digite D:\Autorun.exe onde "D" em "D:\Autorun.exe" é a letra designada ao Drive de CD-ROM do seu computador. Aperte a tecla ENTER do seu teclado
3. Para Windows XP, se o menu de instalação não aparecer automaticamente, clique Start (Iniciar), clique Run (Executar) e digite D:\Autorun.exe onde "D" em "D:\Autorun.exe" é a letra designada ao Drive de CD-ROM do seu computador. Aperte a tecla ENTER do seu teclado

2. Eu posso conectar ou desconectar os cabos USB enquanto o computador estiver ligado?

Sim, você pode conectar ou desconectar o cabo USB enquanto o computador estiver ligado, porque a interface USB é Plug-and-Play e hot-pluggable.

3. Eu tenho um cabo USB 1.1/2.0. Ele funciona com dispositivos USB 3.0?

Sim, ele funciona mas pode causar problemas em conectando periféricos externos de alta velocidade USB 3.0. Assim, é recomendável que você utilize cabo USB 3.0 certificado.

4. Depois de instalar o Card TU3-H2PC com sucesso, eu conectei meu dispositivo USB externo à porta USB, mas parece não funcionar. O que devo fazer?

1. Verifique se seu dispositivo externo USB funciona se instalado diretamente a uma porta USB de seu computador.
2. Se seu dispositivo externo USB foi fornecido com um adaptador externo de tensão, conecte-o ao dispositivo e a uma tomada elétrica.
3. Experimente conectar seu dispositivo externo USB a outra porta USB de seu computador.
4. Experimente utilizar outro cabo US.

Se você ainda encontrar problemas ou tiver alguma pergunta referente ao **TU3-H2PIE**, favor entrar em contato com o Departamento de Suporte Técnico da TRENDnet.

TRENDnet warrants its products against defects in material and workmanship, under normal use and service, for the following lengths of time from the date of purchase.

TU3-H2PIE – 2 Years Limited Warranty

AC/DC Power Adapter, Cooling Fan, and Power Supply carry 1 year warranty.

If a product does not operate as warranted during the applicable warranty period, TRENDnet shall reserve the right, at its expense, to repair or replace the defective product or part and deliver an equivalent product or part to the customer. The repair/replacement unit's warranty continues from the original date of purchase. All products that are replaced become the property of TRENDnet. Replacement products may be new or reconditioned. TRENDnet does not issue refunds or credit. Please contact the point-of-purchase for their return policies.

TRENDnet shall not be responsible for any software, firmware, information, or memory data of customer contained in, stored on, or integrated with any products returned to TRENDnet pursuant to any warranty.

There are no user serviceable parts inside the product. Do not remove or attempt to service the product by any unauthorized service center. This warranty is voided if (i) the product has been modified or repaired by any unauthorized service center, (ii) the product was subject to accident, abuse, or improper use (iii) the product was subject to conditions more severe than those specified in the manual.

Warranty service may be obtained by contacting TRENDnet within the applicable warranty period and providing a copy of the dated proof of the purchase. Upon proper submission of required documentation a Return Material Authorization (RMA) number will be issued. An RMA number is required in order to initiate warranty service support for all TRENDnet products. Products that are sent to TRENDnet for RMA service must have the RMA number marked on the outside of return packages and sent to TRENDnet prepaid, insured and packaged appropriately for safe shipment. Customers shipping from outside of the USA and Canada are responsible for return shipping fees. Customers shipping from outside of the USA are responsible for custom charges, including but not limited to, duty, tax, and other fees.

WARRANTIES EXCLUSIVE: IF THE TRENDNET PRODUCT DOES NOT OPERATE AS WARRANTED ABOVE, THE CUSTOMER'S SOLE REMEDY SHALL BE, AT TRENDNET'S OPTION, REPAIR OR REPLACE. THE FOREGOING WARRANTIES AND REMEDIES ARE EXCLUSIVE AND ARE IN LIEU OF ALL OTHER WARRANTIES, EXPRESSED OR IMPLIED, EITHER IN FACT OR BY OPERATION OF LAW, STATUTORY OR OTHERWISE, INCLUDING WARRANTIES OF MERCHANTABILITY AND FITNESS FOR A PARTICULAR PURPOSE. TRENDNET NEITHER ASSUMES NOR AUTHORIZES ANY OTHER PERSON TO ASSUME FOR IT ANY OTHER LIABILITY IN CONNECTION WITH THE SALE, INSTALLATION MAINTENANCE OR USE OF TRENDNET'S PRODUCTS.

TRENDNET SHALL NOT BE LIABLE UNDER THIS WARRANTY IF ITS TESTING AND EXAMINATION DISCLOSE THAT THE ALLEGED DEFECT IN THE PRODUCT DOES NOT EXIST OR WAS CAUSED BY CUSTOMER'S OR ANY THIRD PERSON'S MISUSE, NEGLIGENCE, IMPROPER INSTALLATION OR TESTING, UNAUTHORIZED ATTEMPTS TO REPAIR OR MODIFY, OR ANY OTHER CAUSE BEYOND THE RANGE OF THE INTENDED USE, OR BY ACCIDENT, FIRE, LIGHTNING, OR OTHER HAZARD.

LIMITATION OF LIABILITY: TO THE FULL EXTENT ALLOWED BY LAW TRENDNET ALSO EXCLUDES FOR ITSELF AND ITS SUPPLIERS ANY LIABILITY, WHETHER BASED IN CONTRACT OR TORT (INCLUDING NEGLIGENCE), FOR INCIDENTAL, CONSEQUENTIAL, INDIRECT, SPECIAL, OR PUNITIVE DAMAGES OF ANY KIND, OR FOR LOSS OF REVENUE OR PROFITS, LOSS OF BUSINESS, LOSS OF INFORMATION OR DATE, OR OTHER FINANCIAL LOSS ARISING OUT OF OR IN CONNECTION WITH THE SALE, INSTALLATION, MAINTENANCE, USE, PERFORMANCE, FAILURE, OR INTERRUPTION OF THE POSSIBILITY OF SUCH DAMAGES, AND LIMITS ITS LIABILITY TO REPAIR, REPLACEMENT, OR REFUND OF THE PURCHASE PRICE PAID, AT TRENDNET'S OPTION. THIS DISCLAIMER OF LIABILITY FOR DAMAGES WILL NOT BE AFFECTED IF ANY REMEDY PROVIDED HEREIN SHALL FAIL OF ITS ESSENTIAL PURPOSE.

Governing Law: This Limited Warranty shall be governed by the laws of the state of California.

Some TRENDnet products include software code written by third party developers. These codes are subject to the GNU General Public License ("GPL") or GNU Lesser General Public License ("LGPL").

Go to <http://www.trendnet.com/gpl> or <http://www.trendnet.com> Download section and look for the desired TRENDnet product to access to the GPL Code or LGPL Code. These codes are distributed WITHOUT WARRANTY and are subject to the copyrights of the developers. TRENDnet does not provide technical support for these codes. Please go to <http://www.gnu.org/licenses/gpl.txt> or <http://www.gnu.org/licenses/lgpl.txt> for specific terms of each license.

Certifications

This equipment has been tested and found to comply with FCC and CE Rules.

Operation is subject to the following two conditions:

- (1) This device may not cause harmful interference.
- (2) This device must accept any interference received. Including interference that may cause undesired operation.



Waste electrical and electronic products must not be disposed of with household waste. Please recycle where facilities exist. Check with you Local Authority or Retailer for recycling advice.



NOTE: THE MANUFACTURER IS NOT RESPONSIBLE FOR ANY RADIO OR TV INTERFERENCE CAUSED BY UNAUTHORIZED MODIFICATIONS TO THIS EQUIPMENT. SUCH MODIFICATIONS COULD VOID THE USER'S AUTHORITY TO OPERATE THE EQUIPMENT.

ADVERTENCIA

En todos nuestros equipos se mencionan claramente las características del adaptador de alimentación necesario para su funcionamiento. El uso de un adaptador distinto al mencionado puede producir daños físicos y/o daños al equipo conectado. El adaptador de alimentación debe operar con voltaje y frecuencia de la energía eléctrica domiciliar existente en el país o zona de instalación.



TRENDnet[®]

Product Warranty Registration

Please take a moment to register your product online.
Go to TRENDnet's website at <http://www.trendnet.com/register>