
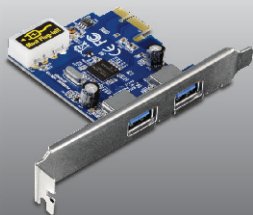


Lühike paigaldusjuhend 

TU3-H2PIE
1.02

Eesti	
1. Enne alustamist	1
2. Kuidas paigaldada	2
Technical Specifications	6
Tõrkeotsing	7



Pakendi sisu

- TU3-H2PIE
- Draiveri CD-ROM
- Mitme keelne lühike paigaldusjuhend

Minimaalsed nõuded süsteemile

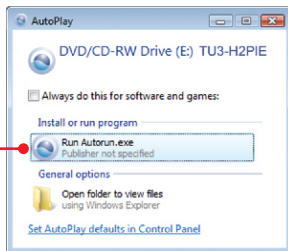
- PCI Express 1.0a/2.0 pesa
- USB 3.0 kaabel
- CD-ROM kettaseade

Toetatud operatsioonisüsteemi	Keskprotsessor	Mälu
Windows 7 (32/64-bit)	1GHz või rohkem	1GB RAM või rohkem
Windows Vista (32/64-bit)	800MHz või rohkem	512MB RAM või rohkem
Windows XP (32/64-bit)	300MHz või rohkem	256MB RAM või rohkem

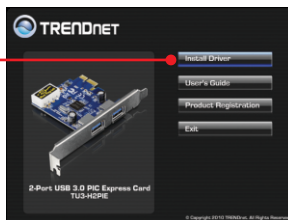
Tähtis! Ärge paigaldage TU3-H2PIE-e enne, kui seda teha palutakse.

1. Sisestage **Utiliidi CD-plaat** arvuti CD-ROM kettaseadmesse.

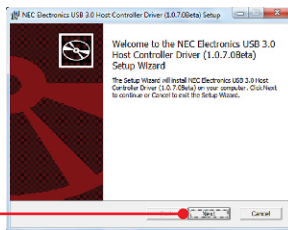
2. Klõpsake **Run Autorun.exe** (Windows 7/Vista korral).



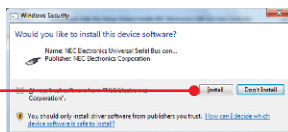
3. Klõpsake **Install Driver.**



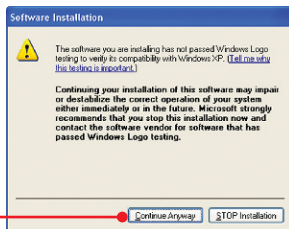
4. Klõpsake **Next.** Seejärel järgige **InstallShield Wizard** juhiseid.



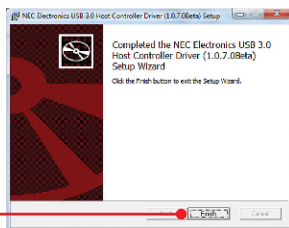
5. Klõpsake **Install.**



6. Klõikige **Continue Anyway**
(Windows XP korral).



7. Klõikige **Finish**.



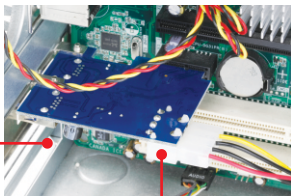
Märkus: Informatsiooni riistvara paigaldamise kohta vaadake oma arvuti kasutusjuhendist.

8. Lülitage oma arvuti välja (Shutdown).

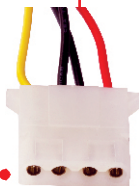
9. Avage arvuti korpus.



10. Sisestage TU3-H2PIE kaart ettevaatlikult vabasse PCI pesasse.



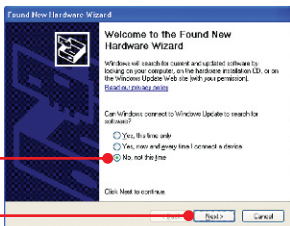
11. Ühendage vaba 4-pin Molex toitekaabel arvuti toiteploki kaardiga TU3-H2PIE.



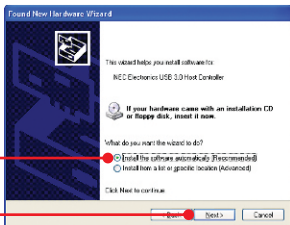
12. Lülitage arvuti sisse ja oodake, kuni Windows töölaud.

Märkus: Windows 7 / Vista draiverid installeeruvad automaatselt. Palun liikuge sammu 18. Windows XP korral jätkake sammust 13.

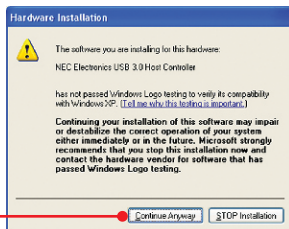
13. Ekraanile ilmub **Found New Hardware Wizard**. Valige **No, not this time** ja seejärel klikkige **Next**.



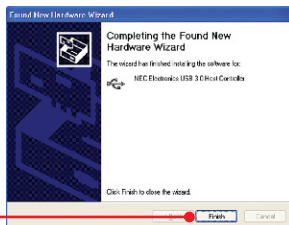
14. Klõpsake **Install the software automatically (Recommended)** ja seejärel klõpsake **Next**.



15. Klõkkige **Continue Anyway**.

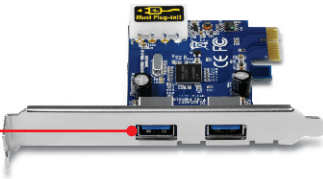


16. Klõkkige **Finish**.



17. Korrake samme 13-16.

18. Ühendage oma USB seade mõnda TU3-H2PIE USB porti .



Paigaldamine on lõppenud.

Hardware	
Interface	<ul style="list-style-type: none">• USB 3.0• PCI Express Interface Revision 2.0 backwards• Electromechanical Specification Revision 2.0• Bus Power Management Interface Specification Revision 1.2
Port	<ul style="list-style-type: none">• 2 x USB 3.0 Port• 1 x 4-pin internal power port (cable not included)
Supported OS	Windows 7 (32/64-bit), Vista (32/64-bit), XP (32/64-bit)
Data Rates	<ul style="list-style-type: none">• Super speed: 5Gbps (USB 3.0)• High speed: 480Mbps (USB 2.0)• Full speed: 12Mbps (USB 1.1)• Low speed: 1.5Mbps (USB 1.0)
Power Consumption	900mA (max) per port
Dimensions (L x W x D)	120 x 82 x 18.5 mm (4.7 x 3.2 x 0.8 in.)
Weight	45g. (1.6oz.)
Temperature	5°C ~ 40°C (41°F ~ 104°F)
Humidity	90% (non-condensing)
Certification	CE, FCC

1. Ma sisestas TU3-H3PC CD-plaadi oma arvuti CD-seadmesse, aga paigaldamise menüü ei ilmunud automaatselt. Mida ma peaksin tegema?

1. Windows 7 korral, kui installatsiooni menu ei ilmu automaatselt, klõpsake ekraani all vasakus nurgas Windowsi ikoonil, klõpsake "Search programs and files" kastikesel ja sisestage D:\Autorun.exe, kus "D" märk tähistab "D:\Autorun.exe" käsus teie CD-ROMi draiverit ja siis vajutage ENTER klahvi klaviatuuril.
2. Windows Vista korral, kui installatsiooni menu ei ilmu automaatselt, klõpsake Start, klõpsake Start Search kastikesel, ja sisestage D:\Autorun.exe kus "D" tähistab "D:\Autorun.exe" teie CD-ROMi draiverit ja siis vajutage ENTER klahvi klaviatuuril.
3. Windows XP korral, kui installatsiooni menu ei ilmu automaatselt, klõpsake Start, klõpsake Run, ja sisestage D:\autorun.exe kus "D" tähistab "D:\autorun.exe" teie CD-ROMi draiverit ja siis vajutage ENTER klahvi klaviatuuril

2. Kas ma saan kokku ja lahti ühendada USB kaablit, kui arvuti on sisse lülitatud?

Jah, te saate kokku ja lahti ühendada USB kaablit, kui arvuti on sisse lülitatud, kuna USB liides on Plug-and-Play ja kuumühendus.

3. Mul on USB 1.1/2.0 kaabel. Kas see töötab USB 3.0 seadmetega?

Jah, see töötab, kuid võib tekkida probleeme super-kiirete USB 3.0 väliste seadmetega. Seetõttu on soovituslik, et te kasutaksite USB 3.0 kaablit.

4. Pärast seda, kui olin edukalt seadistanud TU3-H2PIE, ühendasin ma USB välisseadme USB pordiga, aga tundub, et see ei tööta. Mida ma peaksin tegema?

1. Veenduge, et teie väline USB seade töötab, kui ühendate selle seadme otse oma arvuti USB porti.
2. Veenduge, et te olete ühendanud vaba 4-pinnise Molex toitekaabli oma arvuti sisemisest toiteplokkist TU3-H2PIE'ga.
3. Kui teil on väline AC toiteplokk, mis tuleb kaasa välise USB-seadmega, ühendage AC toiteplokk seadmega ja laadige seadet.
4. Proovige ühendada väline USB seade oma arvuti teise vabasse USB porti.
5. Proovige mõnda teist USB kaablit.

Kui teil on jätkuvalt probleeme või küsimusi **TU3-H2PIE** kohta, palun võtke ühendust TRENDneti tehnilise toega.

TRENDnet warrants its products against defects in material and workmanship, under normal use and service, for the following lengths of time from the date of purchase.

TU3-H2PIE – 2 Years Limited Warranty

AC/DC Power Adapter, Cooling Fan, and Power Supply carry a 1 year warranty.

If a product does not operate as warranted during the applicable warranty period, TRENDnet shall reserve the right, at its expense, to repair or replace the defective product or part and deliver an equivalent product or part to the customer. The repair/replacement unit's warranty continues from the original date of purchase. All products that are replaced become the property of TRENDnet. Replacement products may be new or reconditioned. TRENDnet does not issue refunds or credit. Please contact the point-of-purchase for their return policies.

TRENDnet shall not be responsible for any software, firmware, information, or memory data of customer contained in, stored on, or integrated with any products returned to TRENDnet pursuant to any warranty.

There are no user serviceable parts inside the product. Do not remove or attempt to service the product by any unauthorized service center. This warranty is voided if (i) the product has been modified or repaired by any unauthorized service center, (ii) the product was subject to accident, abuse, or improper use (iii) the product was subject to conditions more severe than those specified in the manual.

Warranty service may be obtained by contacting TRENDnet within the applicable warranty period and providing a copy of the dated proof of the purchase. Upon proper submission of required documentation a Return Material Authorization (RMA) number will be issued. An RMA number is required in order to initiate warranty service support for all TRENDnet products. Products that are sent to TRENDnet for RMA service must have the RMA number marked on the outside of return packages and sent to TRENDnet prepaid, insured and packaged appropriately for safe shipment. Customers shipping from outside of the USA and Canada are responsible for return shipping fees. Customers shipping from outside of the USA are responsible for custom charges, including but not limited to, duty, tax, and other fees.

WARRANTIES EXCLUSIVE: IF THE TRENDNET PRODUCT DOES NOT OPERATE AS WARRANTED ABOVE, THE CUSTOMER'S SOLE REMEDY SHALL BE, AT TRENDNET'S OPTION, REPAIR OR REPLACE. THE FOREGOING WARRANTIES AND REMEDIES ARE EXCLUSIVE AND ARE IN LIEU OF ALL OTHER WARRANTIES, EXPRESSED OR IMPLIED, EITHER IN FACT OR BY OPERATION OF LAW, STATUTORY OR OTHERWISE, INCLUDING WARRANTIES OF MERCHANTABILITY AND FITNESS FOR A PARTICULAR PURPOSE. TRENDNET NEITHER ASSUMES NOR AUTHORIZES ANY OTHER PERSON TO ASSUME FOR IT ANY OTHER LIABILITY IN CONNECTION WITH THE SALE, INSTALLATION MAINTENANCE OR USE OF TRENDNET'S PRODUCTS.

TRENDNET SHALL NOT BE LIABLE UNDER THIS WARRANTY IF ITS TESTING AND EXAMINATION DISCLOSE THAT THE ALLEGED DEFECT IN THE PRODUCT DOES NOT EXIST OR WAS CAUSED BY CUSTOMER'S OR ANY THIRD PERSON'S MISUSE, NEGLIGENCE, IMPROPER INSTALLATION OR TESTING, UNAUTHORIZED ATTEMPTS TO REPAIR OR MODIFY, OR ANY OTHER CAUSE BEYOND THE RANGE OF THE INTENDED USE, OR BY ACCIDENT, FIRE, LIGHTNING, OR OTHER HAZARD.

LIMITATION OF LIABILITY: TO THE FULL EXTENT ALLOWED BY LAW TRENDNET ALSO EXCLUDES FOR ITSELF AND ITS SUPPLIERS ANY LIABILITY, WHETHER BASED IN CONTRACT OR TORT (INCLUDING NEGLIGENCE), FOR INCIDENTAL, CONSEQUENTIAL, INDIRECT, SPECIAL, OR PUNITIVE DAMAGES OF ANY KIND, OR FOR LOSS OF REVENUE OR PROFITS, LOSS OF BUSINESS, LOSS OF INFORMATION OR DATE, OR OTHER FINANCIAL LOSS ARISING OUT OF OR IN CONNECTION WITH THE SALE, INSTALLATION, MAINTENANCE, USE, PERFORMANCE, FAILURE, OR INTERRUPTION OF THE POSSIBILITY OF SUCH DAMAGES, AND LIMITS ITS LIABILITY TO REPAIR, REPLACEMENT, OR REFUND OF THE PURCHASE PRICE PAID, AT TRENDNET'S OPTION. THIS DISCLAIMER OF LIABILITY FOR DAMAGES WILL NOT BE AFFECTED IF ANY REMEDY PROVIDED HEREIN SHALL FAIL OF ITS ESSENTIAL PURPOSE.

Governing Law: This Limited Warranty shall be governed by the laws of the state of California.

Some TRENDnet products include software code written by third party developers. These codes are subject to the GNU General Public License ("GPL") or GNU Lesser General Public License ("LGPL").

Go to <http://www.trendnet.com/gpl> or <http://www.trendnet.com> Download section and look for the desired TRENDnet product to access to the GPL Code or LGPL Code. These codes are distributed WITHOUT WARRANTY and are subject to the copyrights of the developers. TRENDnet does not provide technical support for these codes. Please go to <http://www.gnu.org/licenses/gpl.txt> or <http://www.gnu.org/licenses/lgpl.txt> for specific terms of each license.

Sertifikaadid:

Seade on testitud ning vastab FCC ja CE reeglitele.

Seade vastab järgmistele tingimustele:

(1) Seade ei tohi põhjustada ohtlikke häireid.

(2) Seade peab võtma vastu kõiki signaale, sealhulgas signaale, mis võivad põhjustada soovimatuid häireid seadme töös.



Elektri- ja elektroonikatoodete jäätmeid ei tohi ära visata koos olmejäätmetega. Abivahendite olemasolu korral palume ümbertöötlemiseks sorteerida. Jäätmete ümbertöötlemise kohta küsige nõu oma kohalikul jaemüüjalt.



MÄRKUS: TOOTJA EI VASTUTA ÜHEGI TV VÕI RAADIO HÄIRE EEST, MIS ON PÕHJUSTATUD SEADME LUBAMATUST ÜMBEREHITAMISEST. IGASUGUNE ÜBERMODIFITSEERIMINE TÜHISTAB AUTORIVASTUTUSE SEADMELE.



Product Warranty Registration

Please take a moment to register your product online.
Go to TRENDnet's website at <http://www.trendnet.com/register>