




Guía de instalación rápida 

TU2-PCLINK
TU2-PMLINK
1.01

Table of Contents

Español	1
1. Antes de iniciar	1
2. Cómo se instala	3
3. Uso de la herramienta	4
4. Guía de referencia rápida	6
Technical Specifications	9
Troubleshooting	10



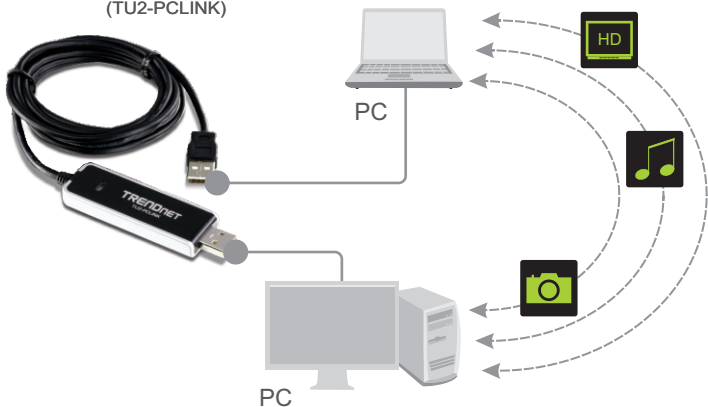
Contenidos del paquete

- TU2-PCLINK/TU2-PMLINK
- Guía de instalación rápida multilingüe

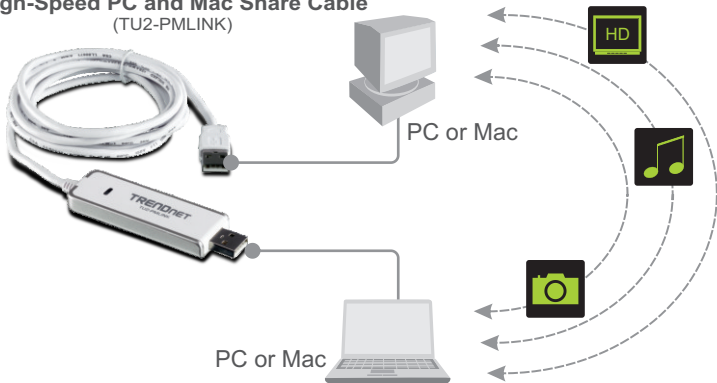
Requisitos del sistema

- CPU: 300 MHz o superior/ 800 MHz o superior (Windows Vista) /1GHz o superior (Windows 7)
- Memoria: 256 MB o superior/ 512 MB o superior (Windows Vista)/ 1GB RAM o superior (Windows 7)
- PC con un puerto USB 1.1 ó 2.0 disponible
- Windows 7(32/64-bit)/ Vista(32/64-bit)/ 2000/XP(32/64-bit) (TU2-PCLINK)
- Windows 7(32/64-bit)/ Vista(32/64-bit)/ 2000/XP(32/64-bit), Mac OS X (10.4~10.6)(TU2-PMLINK)

High-Speed PC-to-PC Share Cable (TU2-PCLINK)



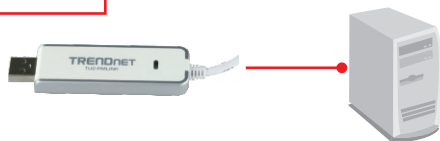
High-Speed PC and Mac Share Cable (TU2-PMLINK)



2. Cómo se instala

Instalación del Hardware

1. Conecte el TU2-PCLINK/TU2-PMLINK a su PC.



2. Los controladores se instalarán de manera automática.

3. Repita los pasos 1-2 en un segundo PC.



La instalación ha sido completada

Registre su producto

Para asegurar los más altos niveles de servicio y apoyo al cliente, registre su producto en línea en: www.trendnet.com/register
Gracias por elegir TRENDnet

ENGLISH

FRANÇAIS

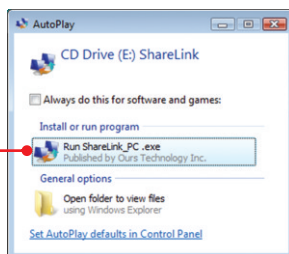
DEUTSCH

ESPAÑOL

РУССКИЙ

Para los usuarios de Windows

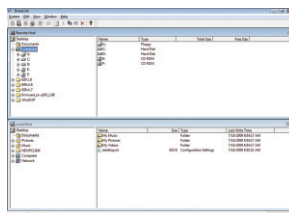
1. Haga clic en **Run** (Ejecutar) **ShareLink_PC.exe** (sólo para Windows Vista).



2. Haga clic aquí para comenzar.



3. Utilice su ratón para arrastrar y soltar archivos desde el Host local al Host remoto. También puede arrastrar y soltar archivos desde el Host remoto al Host local.



Nota: Para más información sobre la aplicación ShareLink, consulte la sección **4. Guía de referencia rápida**.

Para los usuarios de Mac

1. Haga doble clic en el icono ShareLink. El icono le aparecerá en el escritorio.



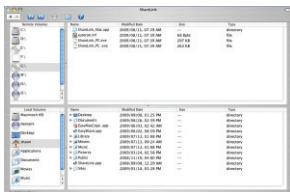
ShareLink

2. Haga doble clic en el icono ShareLink_Mac.



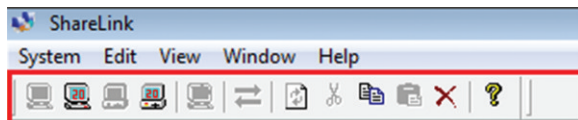
ShareLink_Mac

3. Utilice su ratón para arrastrar y soltar archivos desde el Volumen local al Volumen remoto. También puede arrastrar y soltar archivos desde el Volumen remoto al Volumen local.

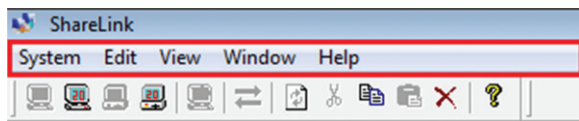


Nota: Para más información sobre la aplicación ShareLink, consulte la sección 4. **Guía de referencia rápida.**

Para los usuarios de Windows







Icono	Descripción
Iconos para estado USB 	Si el puerto USB del PC es 2.0, entonces se iluminará el icono para estado USB 2.0 y se apagará el icono para USB 1.1. Si el puerto USB del PC es 1.1, entonces se activará el icono para USB 1.1 y se desactivará el icono para USB 2.0.
Sólo lectura 	Cuando se activa este icono, se habilita el modo Sólo lectura.
TX/RX 	Cuando se transfieren datos entre PC locales y remotos, se iluminará este icono.
Refrescar 	Refrescar ventanas de ShareLink
Cortar 	Cortar archivo seleccionado o carpeta seleccionada
Copiar 	Copiar archivo seleccionado o carpeta seleccionada
Pegar 	Pegar archivo copiado o carpeta copiada
Eliminar 	Eliminar archivo seleccionado o carpeta seleccionada
Acerca de 	Mostrar información sobre aplicación ShareLink



Opciones de la barra de menú	Opciones	Descripción
Sistema	Configuración	Activar/desactivar modo sólo lectura
	Salir	Salir del programa ShareLink
Editar	Cortar	Cortar archivo seleccionado o carpeta seleccionada
	Copiar	Copiar archivo seleccionado o carpeta seleccionada
	Pegar	Pegar archivo copiado o carpeta copiada
	Eliminar	Eliminar archivo seleccionado o carpeta seleccionada
Ver	Barra de herramientas	Mostrar/ocultar barra de herramientas
	Barra de estado	Mostrar/ocultar Barra de estado
	Iconos grandes	Mostrar archivos y carpetas en las ventanas del Host remoto y del Host local como iconos grandes.
	Iconos pequeños	Mostrar archivos y carpetas en las ventanas del Host remoto y del Host local como iconos pequeños.
	Lista	Mostrar Host remoto y Host local en modo Lista.
	Detalles	Mostrar el Host remoto y el Host local en modo Detalles.
	Refrescar	Refrescar las ventanas del Host remoto y del Host local.
Ventana	Cascada	Ordenar ventanas para que los títulos de las ventanas remotas y locales sean visibles.
	Título	Poner títulos de ventanas remotas y locales lado a lado.
	Dividir	Dividir ventana en dos para ver ventanas locales y remotas a la vez.
	Host local	Activar ventanas de Host local
	Host remoto	Activar ventanas de Host remoto
Ayuda	Sobre ShareLink	Mostrar información sobre aplicación ShareLink

Para los usuarios de Mac



Icono	Descripción
Atrás	Volver atrás
Adelante	Avanzar
Icono para USB local y remoto 	El icono izquierdo se refiere al PC local. El icono derecho se refiere al PC remoto. El icono aparecerá como 2.0 cuando el TU2-PMLINK esté conectado al puerto USB 2.0.
Transferencia de datos 	Cuando los datos se transfieren entre PC locales y remotos, se activará este icono. Cuando no se transfieren datos entre PC locales y remotos, este icono se desactivará.
Nueva carpeta 	Crear nueva carpeta.
Acerca de 	Mover carpetas y archivos seleccionados a la papelera de reciclaje

ShareLink — Edit — Window

Seleccionar todos	Opciones	Descripción
Sistema	Configuración	Activar/desactivar modo sólo lectura
	Salir	Salir del programa ShareLink
Editar	Cortar	Cortar archivo seleccionado o carpeta seleccionada
	Copiar	Copiar archivo seleccionado o carpeta seleccionada
	Pegar	Pegar archivo copiado o carpeta copiada
	Eliminar	Eliminar archivo seleccionado o carpeta seleccionada
	Seleccionar todos	Seleccionar todos los archivos en la ventana activa
Ventana	Minimizar	Minimizar programa ShareLink

Technical Specifications

Interface	USB Type A Female
Standard	USB 2.0
Power Mode	USB Bus Powered
Data Rate	Up to 160Mbps
Diagnostic LEDs	Green Solid Light: The TU2-PCLINK/TU2-PMLINK is connected to at least one computer. Green Flashing Light: Data is being transferred.
Cable Length	1.8m (6ft)
Housing	ABS (plastic)
Operating Systems	TU2-PCLINK: Windows 7/ Vista/ XP/ 2000 TU2-PMLINK: Windows 7/ Vista/ XP/ 2000, Mac OS X (10.4~10.6)
Power Consumption	1W
Dimensions	80 x 25 x 9 mm (3.14 x 0.98 x 0.35in.)
Weight	50g (1.76 oz.)
Temperature	Operating: 0° C ~ 50° C (32° F ~ 122° F) Storage: -40° C ~ 55° C (-40° F ~ 131° F)
Humidity	10% ~ 95%, non-condensing
Certifications	CE, FCC

The installation menu does not appear automatically after I connect the TU2-PCLINK/TU2-PMLINK to my computer. What should I do?

For Windows 2000/XP, if the installation menu does not appear automatically, double-click on My Computer. Then double click on ShareLink. For Windows Vista/7, if the installation menu does not appear automatically, double-click on Computer. Then double-click on ShareLink.

My computer does not detect the TU2-PCLINK/TU2-PMLINK. What should I do?

1. Make sure your computer meets the minimum requirements as specified in Section 1 of this quick installation guide.
2. Connect the TU2-PCLINK/TU2-PMLINK into a different USB port on your computer.

If you still encounter problems or have any questions regarding the **TU2-PCLINK/TU2-PMLINK**, please contact TRENDnet's Technical Support Department.

Limited Warranty

TRENDnet warrants its products against defects in material and workmanship, under normal use and service, for the following lengths of time from the date of purchase.

TU2-PCLINK/TU2-PMLINK - 2 Years Limited Warranty AC/DC Power Adapter, Cooling Fan and Power Supply carry a 1 year limited warranty

If a product does not operate as warranted during the applicable warranty period, TRENDnet shall reserve the right, at its expense, to repair or replace the defective product or part and deliver an equivalent product or part to the customer. The repair/replacement unit's warranty continues from the original date of purchase. All products that are replaced become the property of TRENDnet. Replacement products may be new or reconditioned. TRENDnet does not issue refunds or credit. Please contact the point-of-purchase for their return policies.

TRENDnet shall not be responsible for any software, firmware, information, or memory data of customer contained in, stored on, or integrated with any products returned to TRENDnet pursuant to any warranty.

There are no user serviceable parts inside the product. Do not remove or attempt to service the product by any unauthorized service center. This warranty is voided if (i) the product has been modified or repaired by any unauthorized service center, (ii) the product was subject to accident, abuse, or improper use (iii) the product was subject to conditions more severe than those specified in the manual.

Warranty service may be obtained by contacting TRENDnet within the applicable warranty period and providing a copy of the dated proof of the purchase. Upon proper submission of required documentation a Return Material Authorization (RMA) number will be issued. An RMA number is required in order to initiate warranty service support for all TRENDnet products. Products that are sent to TRENDnet for RMA service must have the RMA number marked on the outside of return packages and sent to TRENDnet prepaid, insured and packaged appropriately for safe shipment. Customers shipping from outside of the USA and Canada are responsible for return shipping fees. Customers shipping from outside of the USA are responsible for custom charges, including but not limited to, duty, tax, and other fees.

WARRANTIES EXCLUSIVE: IF THE TRENDNET PRODUCT DOES NOT OPERATE AS WARRANTED ABOVE, THE CUSTOMER'S SOLE REMEDY SHALL BE, AT TRENDNET'S OPTION, REPAIR OR REPLACE. THE FOREGOING WARRANTIES AND REMEDIES ARE EXCLUSIVE AND ARE IN LIEU OF ALL OTHER WARRANTIES, EXPRESSED OR IMPLIED, EITHER IN FACT OR BY OPERATION OF LAW, STATUTORY OR OTHERWISE, INCLUDING WARRANTIES OF MERCHANTABILITY AND FITNESS FOR A PARTICULAR PURPOSE. TRENDNET NEITHER ASSUMES NOR AUTHORIZES ANY OTHER PERSON TO ASSUME FOR IT ANY OTHER LIABILITY IN CONNECTION WITH THE SALE, INSTALLATION MAINTENANCE OR USE OF TRENDNET'S PRODUCTS.

TRENDNET SHALL NOT BE LIABLE UNDER THIS WARRANTY IF ITS TESTING AND EXAMINATION DISCLOSE THAT THE ALLEGED DEFECT IN THE PRODUCT DOES NOT EXIST OR WAS CAUSED BY CUSTOMER'S OR ANY THIRD PERSON'S MISUSE, NEGLIGENCE, IMPROPER INSTALLATION OR TESTING, UNAUTHORIZED ATTEMPTS TO REPAIR OR MODIFY, OR ANY OTHER CAUSE BEYOND THE RANGE OF THE INTENDED USE, OR BY ACCIDENT, FIRE, LIGHTNING, OR OTHER HAZARD.

LIMITATION OF LIABILITY: TO THE FULL EXTENT ALLOWED BY LAW TRENDNET ALSO EXCLUDES FOR ITSELF AND ITS SUPPLIERS ANY LIABILITY, WHETHER BASED IN CONTRACT OR TORT (INCLUDING NEGLIGENCE), FOR INCIDENTAL, CONSEQUENTIAL, INDIRECT, SPECIAL, OR PUNITIVE DAMAGES OF ANY KIND, OR FOR LOSS OF REVENUE OR PROFITS, LOSS OF BUSINESS, LOSS OF INFORMATION OR DATE, OR OTHER FINANCIAL LOSS ARISING OUT OF OR IN CONNECTION WITH THE SALE, INSTALLATION, MAINTENANCE, USE, PERFORMANCE, FAILURE, OR INTERRUPTION OF THE POSSIBILITY OF SUCH DAMAGES, AND LIMITS ITS LIABILITY TO REPAIR, REPLACEMENT, OR REFUND OF THE PURCHASE PRICE PAID, AT TRENDNET'S OPTION. THIS DISCLAIMER OF LIABILITY FOR DAMAGES WILL NOT BE AFFECTED IF ANY REMEDY PROVIDED HEREIN SHALL FAIL OF ITS ESSENTIAL PURPOSE.

Governing Law: This Limited Warranty shall be governed by the laws of the state of California.

Some TRENDnet products include software code written by third party developers. These codes are subject to the GNU General Public License ("GPL") or GNU Lesser General Public License ("LGPL").

Go to <http://www.trendnet.com/gpl> or <http://www.trendnet.com> Download section and look for the desired TRENDnet product to access to the GPL Code or LGPL Code. These codes are distributed WITHOUT WARRANTY and are subject to the copyrights of the developers. TRENDnet does not provide technical support for these codes. Please go to <http://www.gnu.org/licenses/gpl.txt> or <http://www.gnu.org/licenses/lgpl.txt> for specific terms of each license.

PWP05202009v2

Certifications

This equipment has been tested and found to comply with FCC and CE Rules.

Operation is subject to the following two conditions:

- (1) This device may not cause harmful interference.
- (2) This device must accept any interference received. Including interference that may cause undesired operation.



Waste electrical and electronic products must not be disposed of with household waste. Please recycle where facilities exist. Check with you Local Authority or Retailer for recycling advice.



NOTE: THE MANUFACTURER IS NOT RESPONSIBLE FOR ANY RADIO OR TV INTERFERENCE CAUSED BY UNAUTHORIZED MODIFICATIONS TO THIS EQUIPMENT. SUCH MODIFICATIONS COULD VOID THE USER'S AUTHORITY TO OPERATE THE EQUIPMENT.

ADVERTENCIA

En todos nuestros equipos se mencionan claramente las características del adaptador de alimentación necesario para su funcionamiento. El uso de un adaptador distinto al mencionado puede producir daños físicos y/o daños al equipo conectado. El adaptador de alimentación debe operar con voltaje y frecuencia de la energía eléctrica domiciliar existente en el país o zona de instalación.



TRENDnet[®]

Product Warranty Registration

Please take a moment to register your product online.
Go to TRENDnet's website at <http://www.trendnet.com/register>