




Anleitung zur Schnellinstallation 

**TU2-ETG**  
V1

# Table of Contents

|                       |   |
|-----------------------|---|
| Deutsch               | 1 |
| 1. Bevor Sie anfangen | 1 |
| 2. Installation       | 2 |
| .....                 |   |
| Troubleshooting       | 4 |



## Packungsinhalt

- ← TU2-ETG
- ← Treiber CD-ROM
- ← Mehrsprachige Installationsanleitung

## Systemanforderungen

- ← CD-ROM-Laufwerk
- ← USB-Port: 2.0 oder 1.1

| Unterstützte Betriebssysteme  | Prozessor             | Speicher            |
|-------------------------------|-----------------------|---------------------|
| Windows 7 (32/64-bit)         | 1GHz oder schneller   | 1GB RAM oder mehr   |
| Windows Vista (32/64-bit)     | 800MHz oder schneller | 512MB RAM oder mehr |
| Windows XP (32/64-bit) / 2000 | 300MHz oder schneller | 256MB RAM oder mehr |

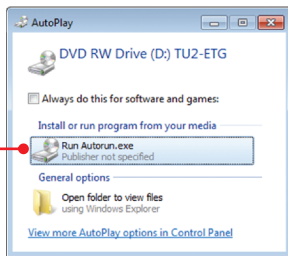
## 2. Installation

### Hinweis:

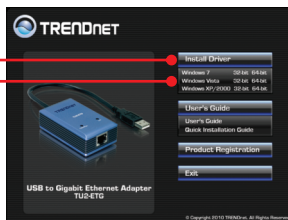
Installieren Sie den USB-Adapter TU2-ETG erst dann im Computer, wenn Sie dazu aufgefordert werden.

1. Legen Sie die Treiber-CD in Ihr CD-ROM-Laufwerk ein.

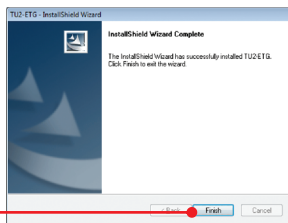
2. Klicken Sie auf **Run Autorun.exe** (Autorun.exe ausführen) (nur Windows 7/Vista).



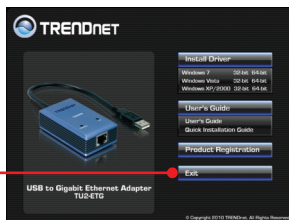
3. Klicken Sie **Install Driver** und wählen Sie dann Ihr Betriebssystem.



4. Folgen Sie den **Anweisungen des Installationsassistenten** und klicken Sie dann auf **Finish (Fertigstellen)**.

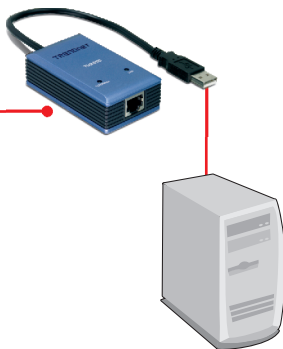


5. Klicken Sie **Exit**.



6. Nehmen Sie die Treiber-CD-ROM aus dem CD-ROM-Laufwerk Ihres Computers.

7. Verbinden Sie den Adapter mit einem freien USB-Port Ihres Computers.



8. Die Treiber werden automatisch installiert.

9. Verbinden Sie den Adapter über ein RJ-45-Kabel mit einem Umschalter, Router oder Kabel/DSL-Modem.



**Ihre Installation ist beendet!**

## **1. I inserted the Driver CD-ROM into my computer's CD-ROM Drive and the installation menu does not appear automatically. What should I do?**

1. For Windows 7, if the installation menu does not appear automatically, click on the Windows icon on the bottom left hand corner of the screen, click the "Search programs and files" box, and type **D:\autorun.exe**, where "D" in "D:\autorun.exe" is the letter assigned to your CD-ROM Drive, and then press the ENTER key on your keyboard.
2. For Windows Vista, if the installation menu does not appear automatically, click **Start**, click the **Start Search** box, and type **D:\autorun.exe** where "D" in "D:\autorun.exe" is the letter assigned to your CD-ROM Drive, and then press the ENTER key on your keyboard.
3. For Windows XP/2000, if the installation menu does not appear automatically, click **Start**, click **Run**, and type **D:\autorun.exe** where "D" in "D:\autorun.exe" is the letter assigned to your CD-ROM Drive, and then press the ENTER key on your keyboard.

## **2. Can I connect or disconnect the TU2-ETG while the computer is on?**

Yes, you can connect or disconnect TU2-ETG while the computer is on because the USB interface is Plug-and-Play compliant and hot-pluggable.

## **3. Windows is unable to recognize my hardware. What should I do?**

1. Make sure your computer meets the minimum requirements as specified in Section 1 of this Quick Installation Guide.
2. Try plugging the adapter into a different USB port.

## **4. Windows recognizes my new hardware, but I'm unable to connect to my network. What should I do?**

1. Verify that the RJ-45 Ethernet cable is securely connected from your switch or router to your adapter.
2. Verify that the LEDs on your adapter are lit.
3. Verify that the TCP/IP settings are set to Obtain an IP address automatically.

## **5. When I connect my adapter to a Gigabit switch, I am not getting Gigabit speeds. What should I do?**

Make sure you are using CAT-5e or CAT-6 Ethernet Cables. Some CAT-5 cables are not rated to run in Gigabit.

If you still encounter problems or have any questions regarding the **TU2-ETG**, please contact TRENDnet's Technical Support Department.

## Certifications

This equipment has been tested and found to comply with FCC and CE Rules.

Operation is subject to the following two conditions:

- (1) This device may not cause harmful interference.
- (2) This device must accept any interference received. Including interference that may cause undesired operation.



Waste electrical and electronic products must not be disposed of with household waste. Please recycle where facilities exist. Check with you Local Authority or Retailer for recycling advice.



**NOTE:** THE MANUFACTURER IS NOT RESPONSIBLE FOR ANY RADIO OR TV INTERFERENCE CAUSED BY UNAUTHORIZED MODIFICATIONS TO THIS EQUIPMENT. SUCH MODIFICATIONS COULD VOID THE USER'S AUTHORITY TO OPERATE THE EQUIPMENT.

### ADVERTENCIA

En todos nuestros equipos se mencionan claramente las características del adaptador de alimentación necesario para su funcionamiento. El uso de un adaptador distinto al mencionado puede producir daños físicos y/o daños al equipo conectado. El adaptador de alimentación debe operar con voltaje y frecuencia de la energía eléctrica domiciliar existente en el país o zona de instalación.



**TRENDnet<sup>®</sup>**

## Product Warranty Registration

Please take a moment to register your product online.  
Go to TRENDnet's website at <http://www.trendnet.com/register>