

TU2-ET100 Windows Driver Installation

Minimum System Requirements

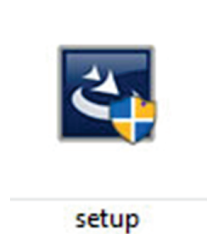
- USB Port: 1.1 or 2.0
- CPU: 1GHz or above
- Memory: 1GB RAM or above

Note:

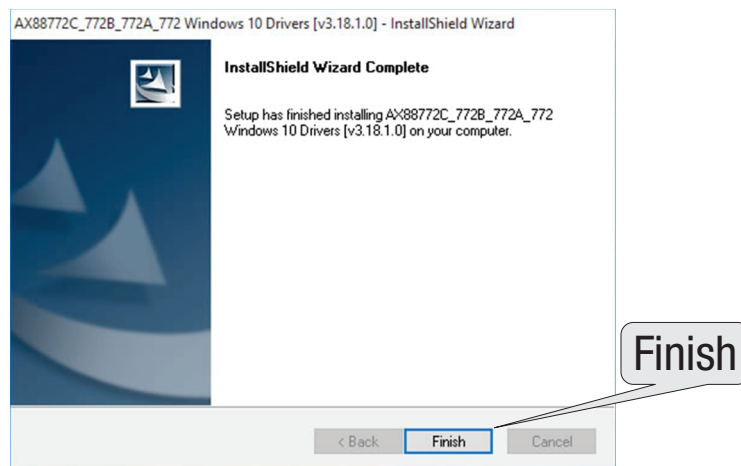
- Prior to installing the new driver, you must uninstall the previous one (e.g. ASIX_AX88772 USB2.0 to Faster Ethernet Adapter or _AX88772x_AX88772x_AX88772_Windows x Driver).
- DO NOT install the TU2-ET100 adapter in the computer until instructed to do so.
- You will need to unzip the drivers after you download it.

Step:

1. Go to <http://www.trendnet.com/downloads>. From the Select Product drop down list, scroll down until you see TU2-ET100. Then click GO. Select V4.0R, then click the Windows driver link and save the driver to your computer.
2. Browse the Windows driver folder and double click on the setup.exe icon.



3. Follow the InstallShield Wizard and then click **Finish**.



4. Connect the adapter to an available USB port of your computer.
5. Driver will install automatically.
6. Connect a network cable from the TU2-ET100 to a Switch, Router or Cable/DSL Modem.
7. Your installation is now completed.

Diagram:

