



User's Guide

TU2-ET100
V3

Table of Contents

1. Introduction	1
Features	1
Package Contents	1
System Requirements.....	1
LED Status	2
2. Installation	3
Windows 7/ Vista	3
Windows XP	5
Windows 2000	7
Windows ME	9
Windows 98SE.....	12
Verifying the Driver Installation in Windows	15
Mac 10.6x.....	16
Mac 10.5x.....	19
Mac 10.4.x.....	22
Configuring Network Settings and Making a Connection.....	24
Mac OS X 10.1.x ~ 10.3.x	26
3. Specifications.....	30
Limited Warranty	31

1. Introduction

The TU2-ET100 is a high speed USB network adapter that allows you to instantly connect to a 10/100Mbps network from a USB enabled desktop or Notebook PC. Compliant with USB 2.0 and backwards compatible with the USB 1.0 and 1.1, you can share files and printers and also gain access to broadband Internet to explore valuable resources on the web.

Features

- Compliant with USB 2.0 and 1.1 specifications
- Compliant with IEEE 802.3 and 802.3u standards
- Supports both full-duplex and half-duplex operations
- Supports Suspend mode and Hibernate mode to remote wake-up through link-up or magic packet
- Compliant with Windows 7/Vista/XP/2000/ME/98SE or Mac OS 10.1~10.6
- Powered by USB port. No external power adapter required
- Diagnostic LEDs
- Plug & Play for easy Installation

Package Contents

Before installation, please check the items of the package. The package should contain the following items:

- TU2-ET100
- CD-ROM(Driver & User's Guide)
- Multi-Language Quick Installation Guide

System Requirements

- CPU: 300MHZ or above
- Memory: 256MB RAM or above
- Computer With An Available USB 1.1 or 2.0 Port
- Windows® 7 (32/64-bit) / Vista (32/64-bit) / XP (32/64-bit) / 2000 / ME / 98SE; Mac OS X 10.1 ~ 10.6

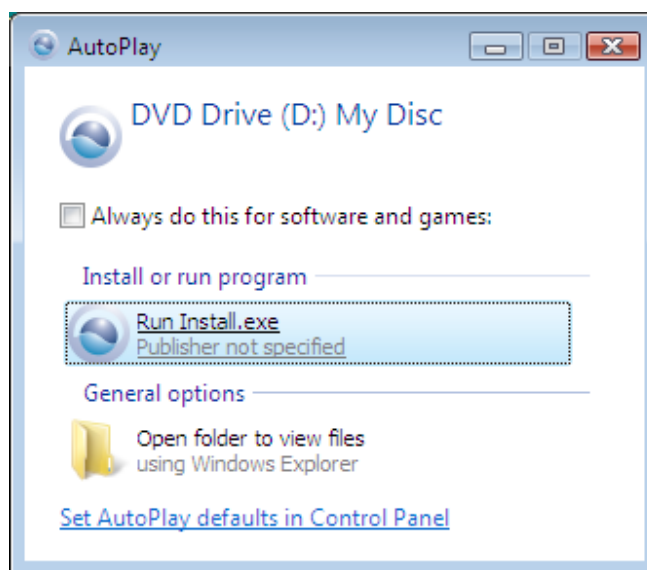
LED Status

LED	Color	Description
100Mbps	Green	On for 100Mbps Off of 10Mbps or not connected
Link	Green	LAN activity. Blinking when there is data flow between LAN and the host computer.

2. Installation

Windows 7/ Vista

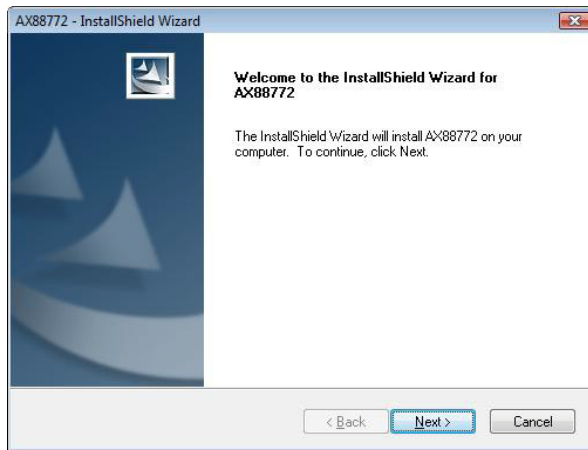
1. Insert the Driver CD-ROM into your CD-ROM Drive.
2. Click **Run Install.exe**



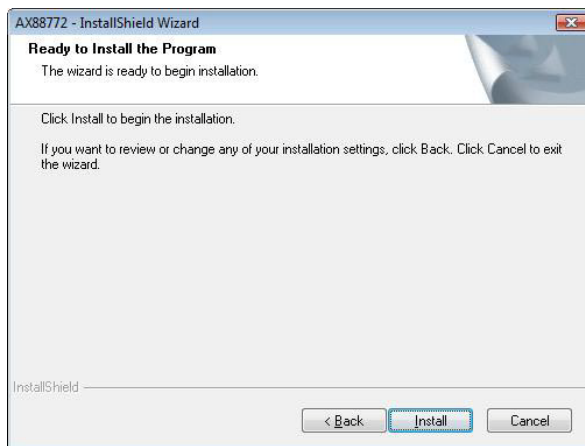
3. Click **Install Driver** to install the driver.



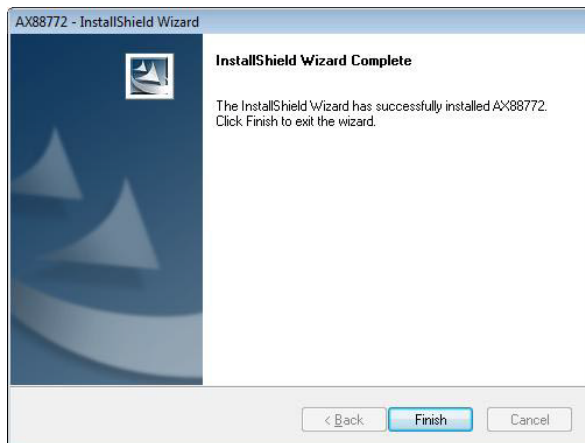
4. Click **Next**.



5. Click Install.



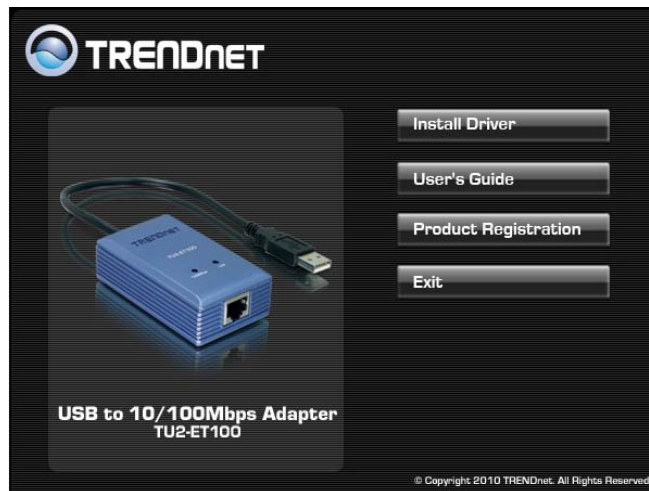
6. Click Finish.



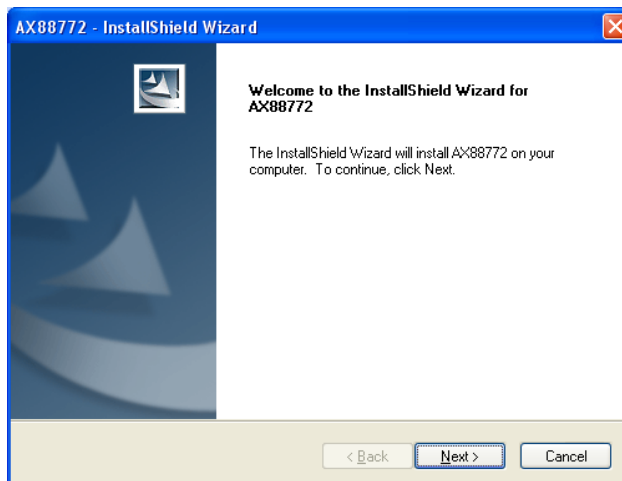
7. Remove the CD-ROM from your computer's CD-ROM drive.
8. Connect the Adapter to an available USB port of your computer
9. Drivers will install automatically
10. Connect a RJ-45 cable from the TU2-ET100 to a Switch, Router or Cable/DSL Modem.

Windows XP

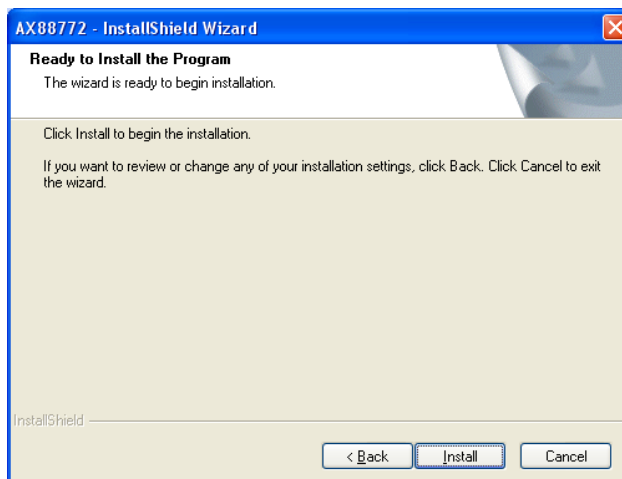
1. Insert the Driver CD-ROM into your CD-ROM Drive.
2. Click **Install Driver** to install the driver.



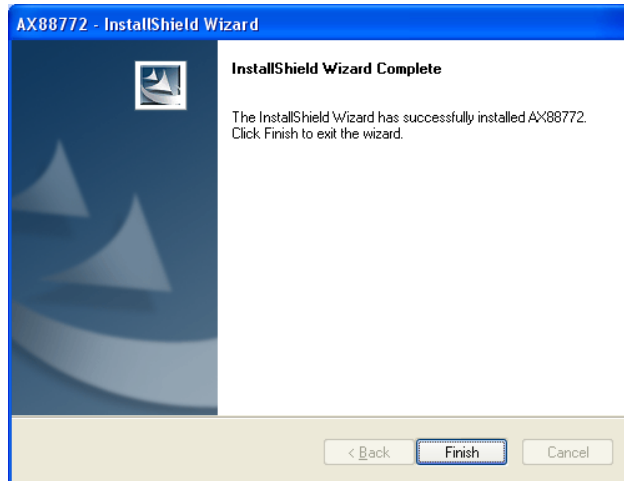
3. Click **Next**.



4. Click **Install**.



5. Click **Finish**.



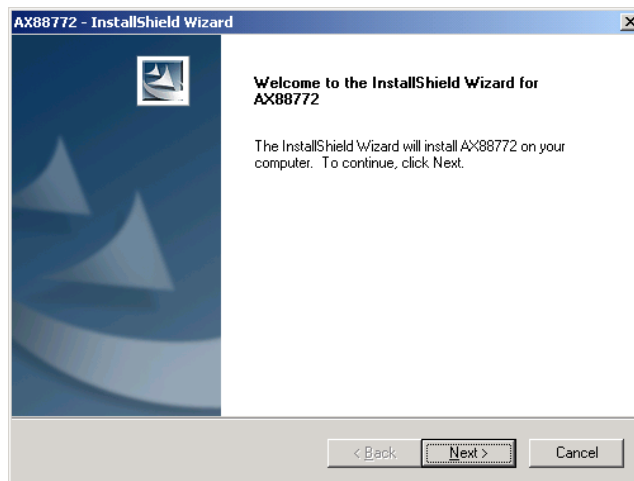
6. Remove the CD-ROM from your computer's CD-ROM drive.
7. Connect the Adapter to an available USB port of your computer
8. Drivers will install automatically
9. Connect a RJ-45 cable from the TU2-ET100 to a Switch, Router or Cable/DSL Modem.

Windows 2000

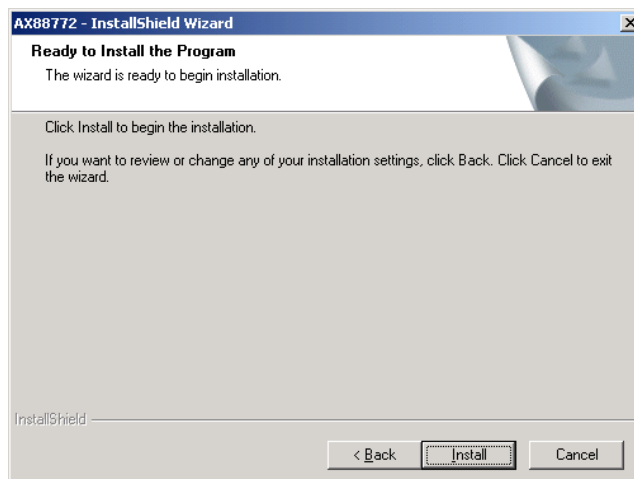
1. Insert the Driver CD-ROM into your CD-ROM Drive.
2. Click **Install Driver** to install the driver.



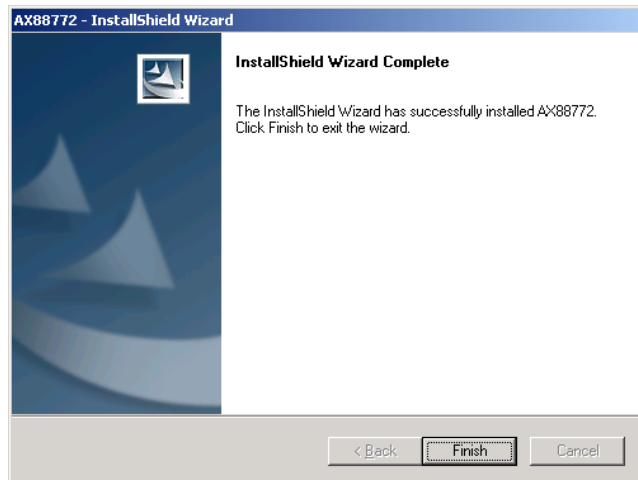
3. Click **Next**.



4. Click **Install**.



5. Click **Finish**.



6. Remove the CD-ROM from your computer's CD-ROM drive.
7. Connect the Adapter to an available USB port of your computer
8. Drivers will install automatically
9. Connect a RJ-45 cable from the TU2-ET100 to a Switch, Router or Cable/DSL Modem.

Windows ME

1. Insert the provided CD into your CD-ROM drive, then Click **Exit**.



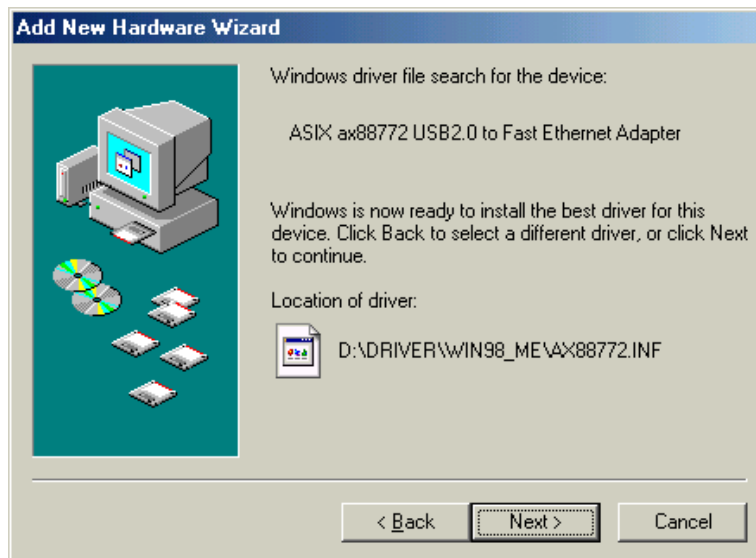
2. Connect the Adapter to an available USB port of your computer
3. When the follow screen pop up, select **Specify the location of the driver (Advanced)**



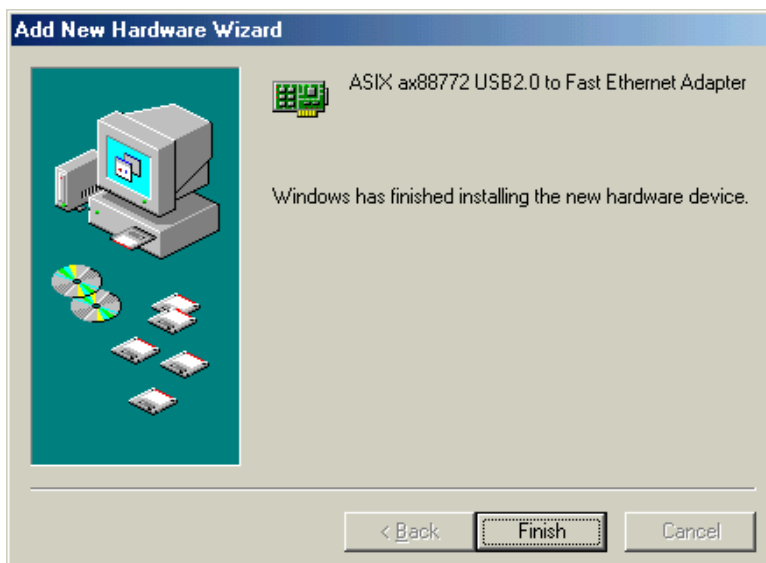
4. When the screen below appears, click **Browse** to navigate to **x:\Driver\Win98_ME** where x: is your CD-ROM drive letter. Then click **Next**.



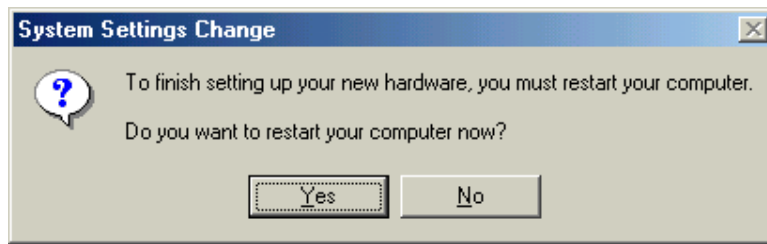
5. Click **Next**



6. Click **Finish**.



7. When prompted, click **Yes** to restart your computer.



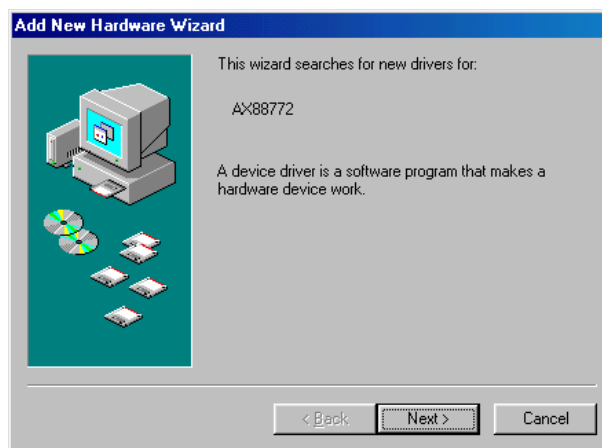
8. Connect a RJ-45 cable from the TU2-ET100 to a Switch, Router or Cable/DSL Modem.

Windows 98SE

1. Insert the provided CD into your CD-ROM drive, then Click **Cancel**.



2. Connect the Adapter to an available USB port of your computer
3. Upon your USB device connection, Windows will detect the new device and pop up the following screen. click **Next**.



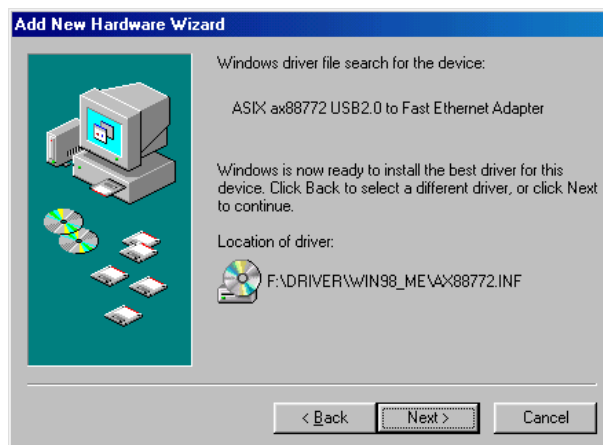
4. Select **Search for the best driver for your device**. Click **Next**.



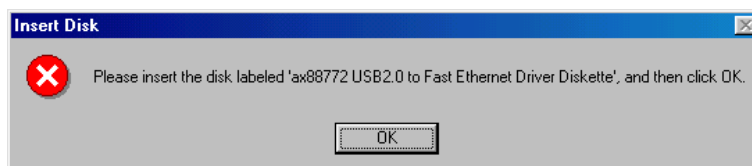
5. Select **Specify a location** and click **Browse** to navigate to **x:\Driver\Win98_ME** where x: is your CD-ROM drive letter. Then click **Next**.



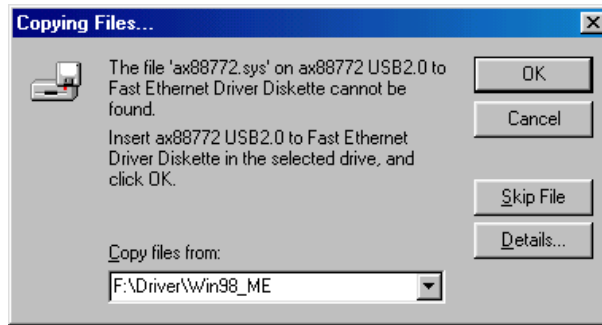
6. Click **Next**.



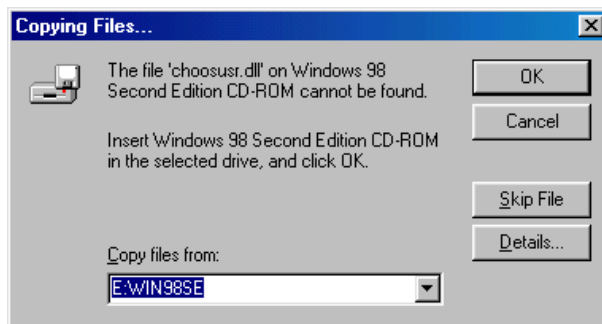
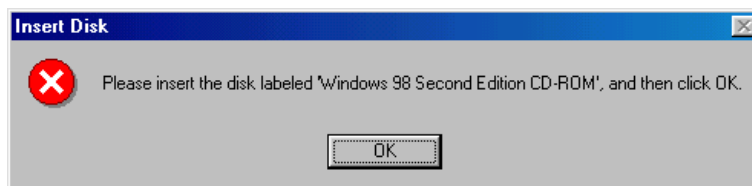
7. If the screen below appears, click **OK**.



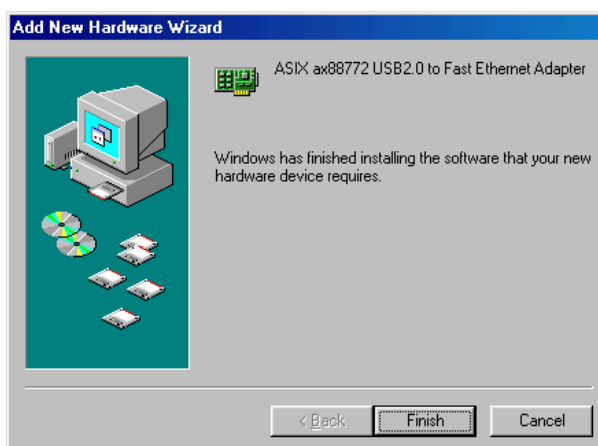
8. In the drop-down list, select **x:\Driver\Win98_ME** and click **OK**.



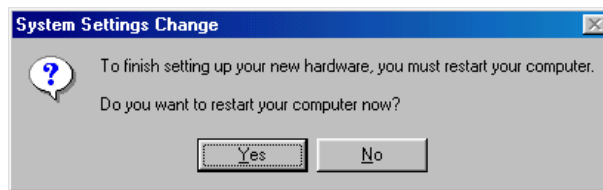
9. If the system prompts you for the Windows 98SE CD-ROM, click **OK**. Remove the provided CD and insert the Windows 98SE CD-ROM. Then click **OK** again.



10. Click **Finish**.



11. When prompted, click **Yes** to restart your computer.

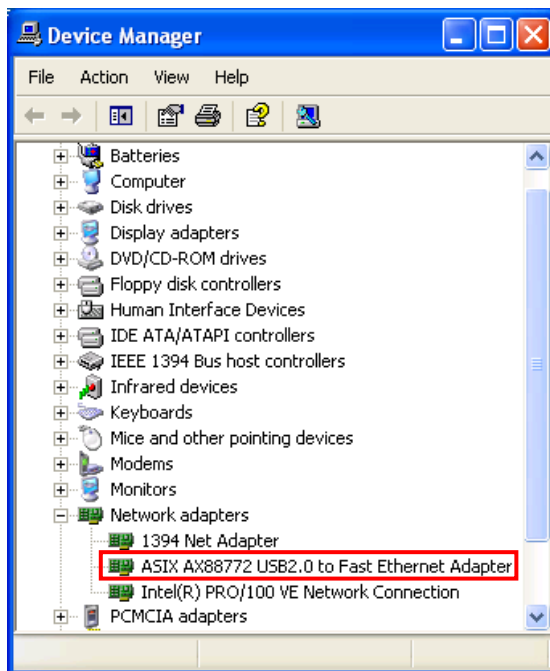


12. Connect a RJ-45 cable from the TU2-ET100 to a Switch, Router or Cable/DSL Modem.

Verifying the Driver Installation in Windows

To verify your Ethernet adapter installation, select **Control Panel > System > (Hardware) > Device Manager**. In the **Network adapters** group, **ASIX AX88772 USB2.0 to Fast Ethernet Adapter** should be displayed.

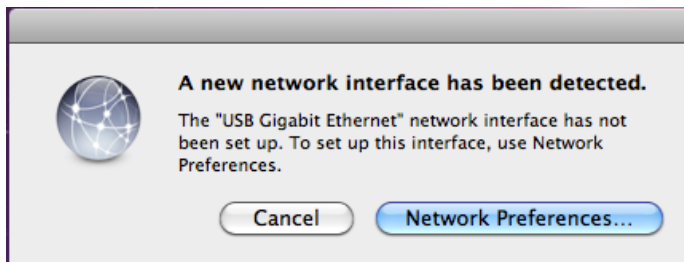
If there is a question or exclamation mark next to that item, then the driver is not properly installed. Please delete the item and repeat the installation steps.



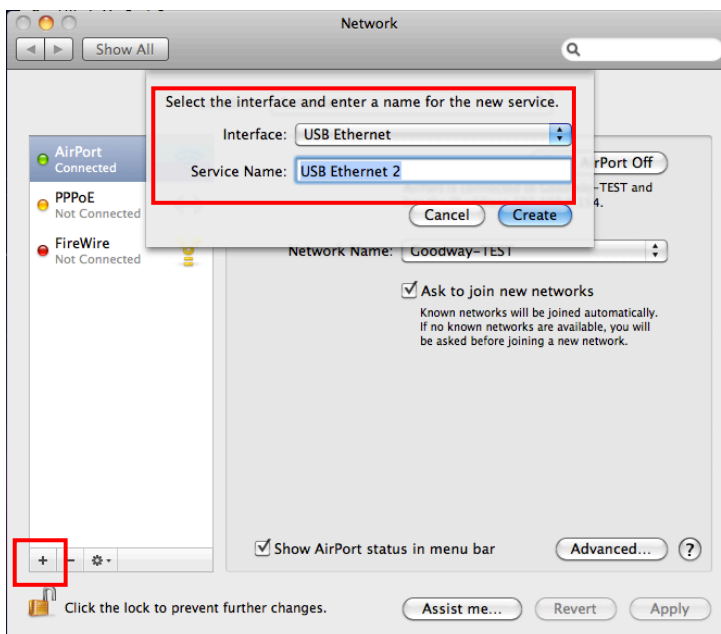
*The example screenshot is under Windows XP.

Mac 10.6x

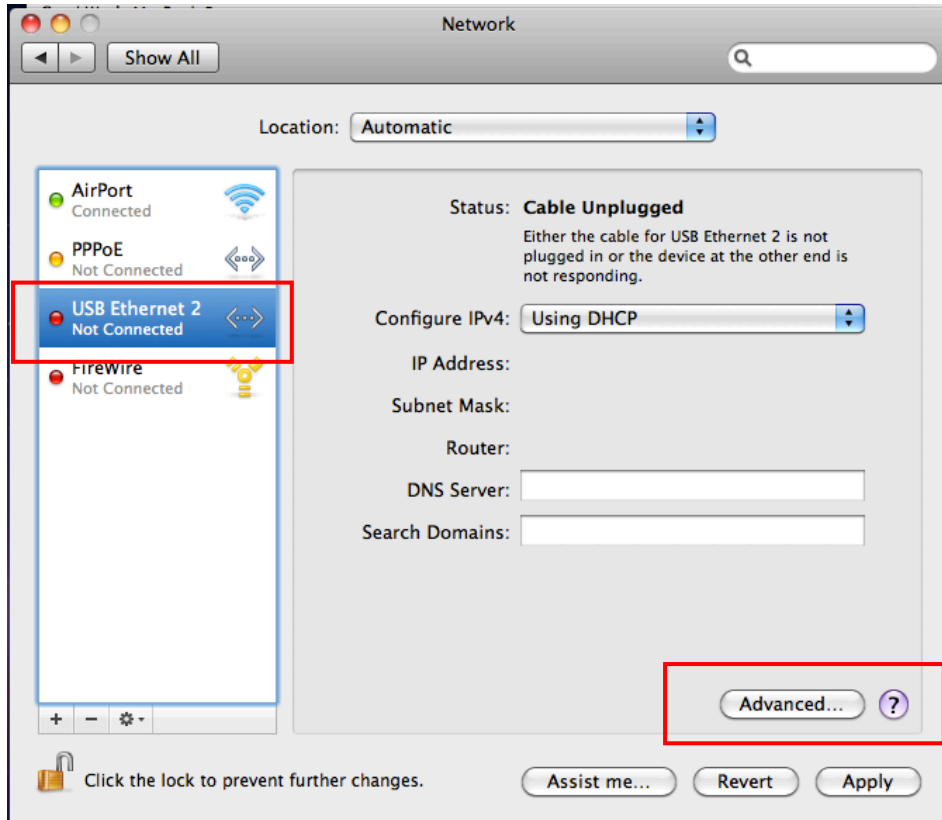
1. Connect the Ethernet adapter to a free USB port. There system will pop up a message “A new network interface has been detected”



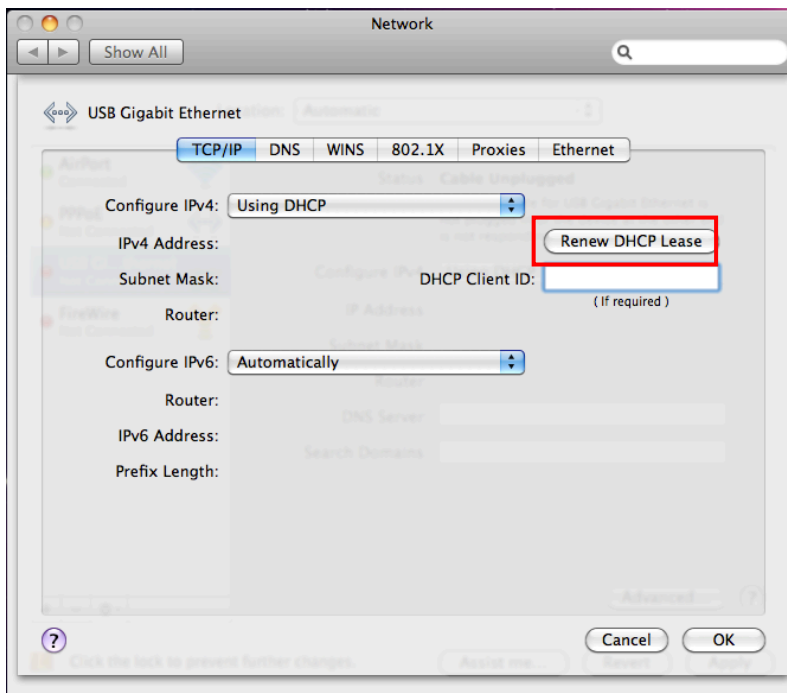
2. If the message not pop up , please Start **System Preferences** and select **Network**, then click the ”+” to add an “**USB Ethernet** “ service .



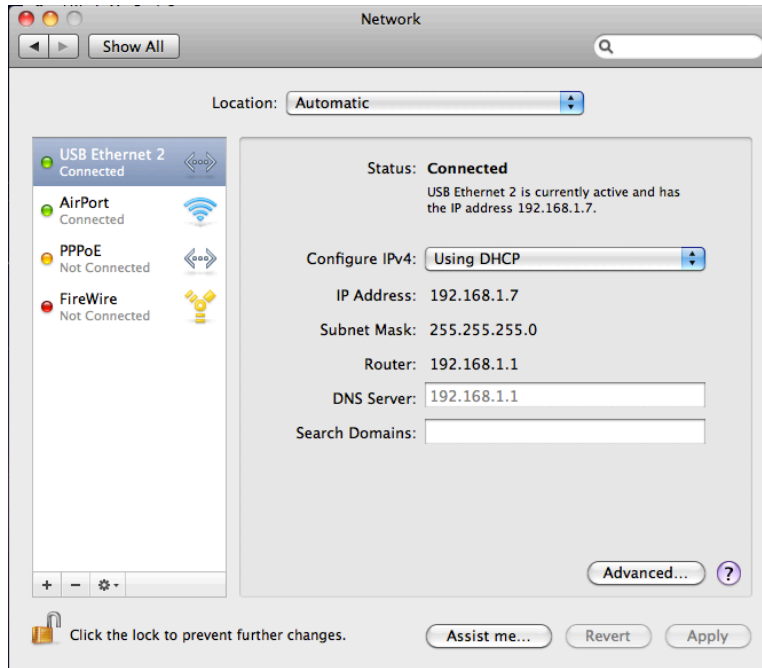
3. Select “**USB Gigabit Ethernet** “ then click “**Advanced**” to setting the network by static IP or thru DHCP way.



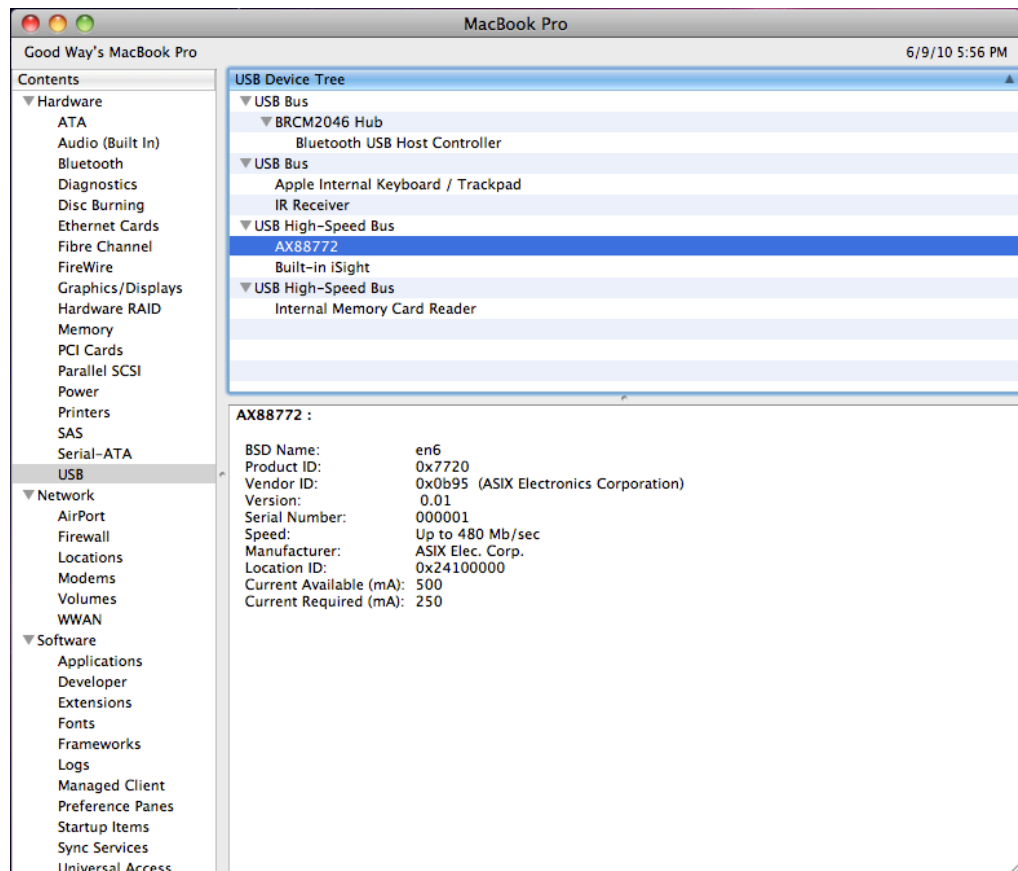
3. by “ Using DHCP” Mode , please Click” **Renew DHCP License** “to get the IP address , Else you have to enter the related information from your network service provider .



4. You will find that a new Ethernet network interface is available



5. Once you finish the installation, you can open **GO > Utilities > System Profile > Hardware > USB >** to verify if your Ethernet adapter is properly installed.

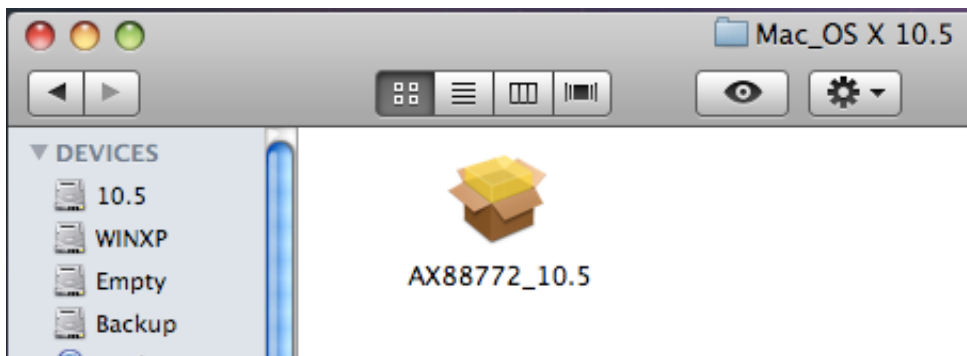


Mac 10.5x

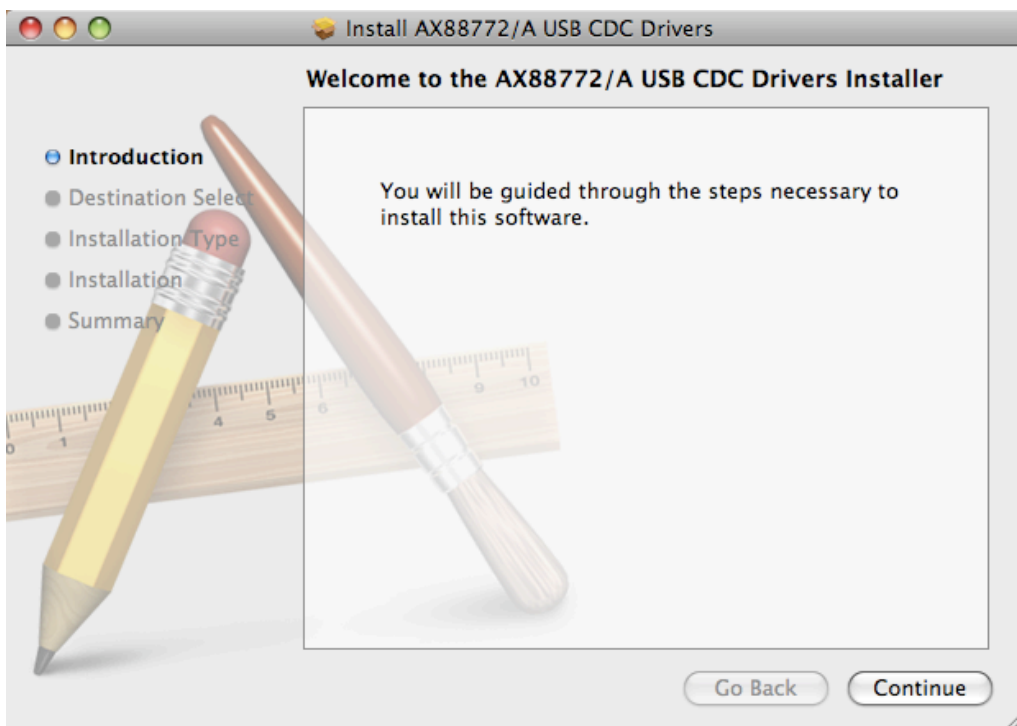
1. Insert the provided driver CD into your CD-ROM drive. Double-click the CD and navigate to the directory of **\Driver\Mac10.x**.



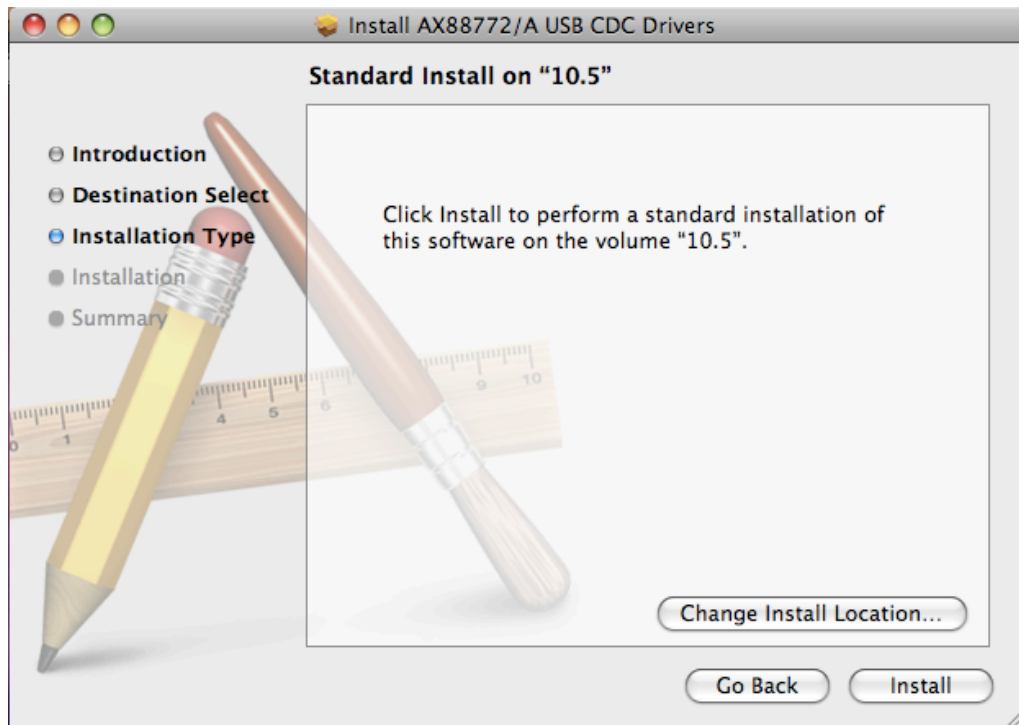
2. In the directory of Mac10.x, please double-click **AX88772_10.5** to execute the installer program.



3. The onscreen prompted and please click on **Continue** to go to next step.



4. Please Click on **Install** to continue this installation.

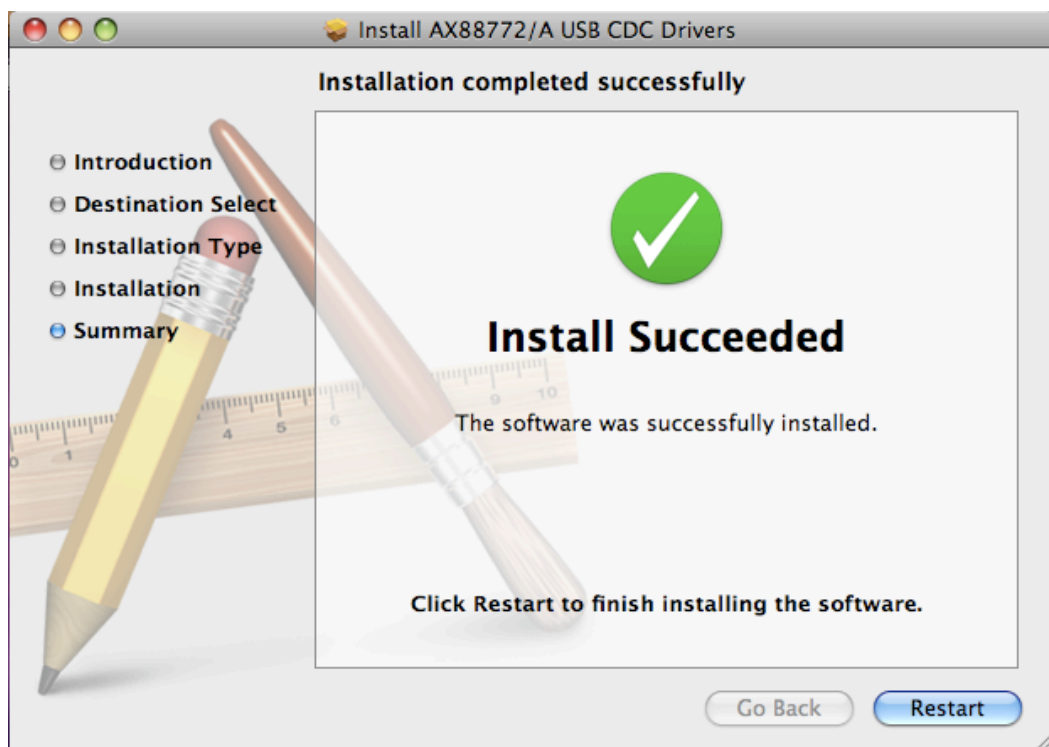


5. Make sure that you want to install this driver now and the computer will be restarted once the installation is done. Please click on **Continue Installation** to continue this installation.





6. Click on **Restart** to take the new settings effect.



Mac 10.4.x

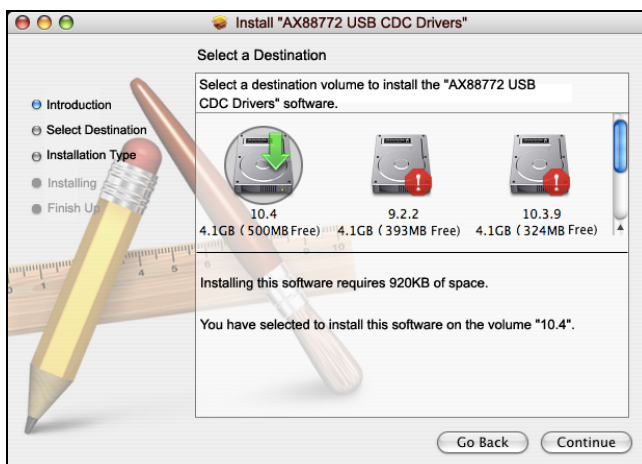
1. Insert the provided CD into your CD-ROM drive. Copy the archive file under the directory of **\Driver\Mac10.4** to the desktop and then double-click the file until you locate the setup file.
2. Double-click the setup file “**AX88772**”.



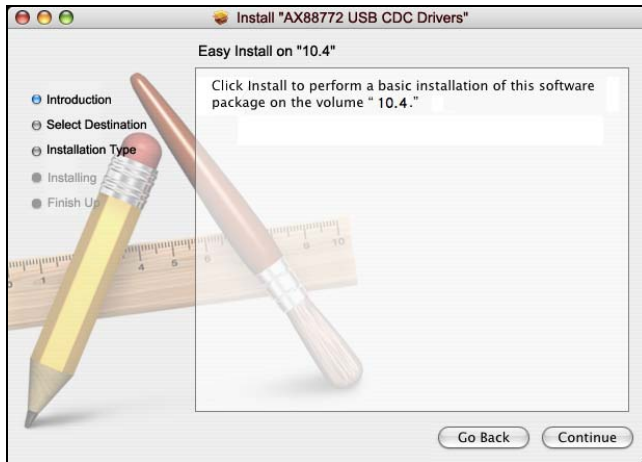
3. When the welcome screen appears, click **Continue**.



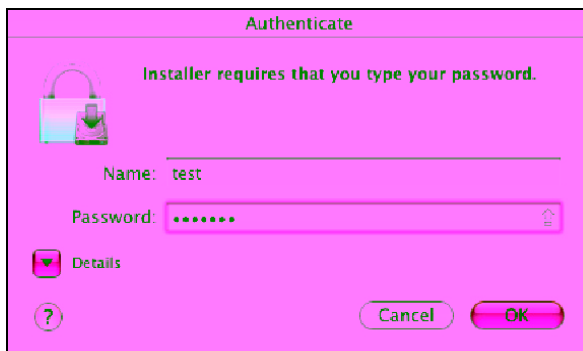
4. Select a destination disk to install the driver and click **Continue**.



5. Click **Continue** to start the installation.



6. When the **Authenticate** screen appears, enter your password in the provided field and click **OK**.



7. Click **Continue Installation**.



8. When the software was successfully installed, click **Restart**.

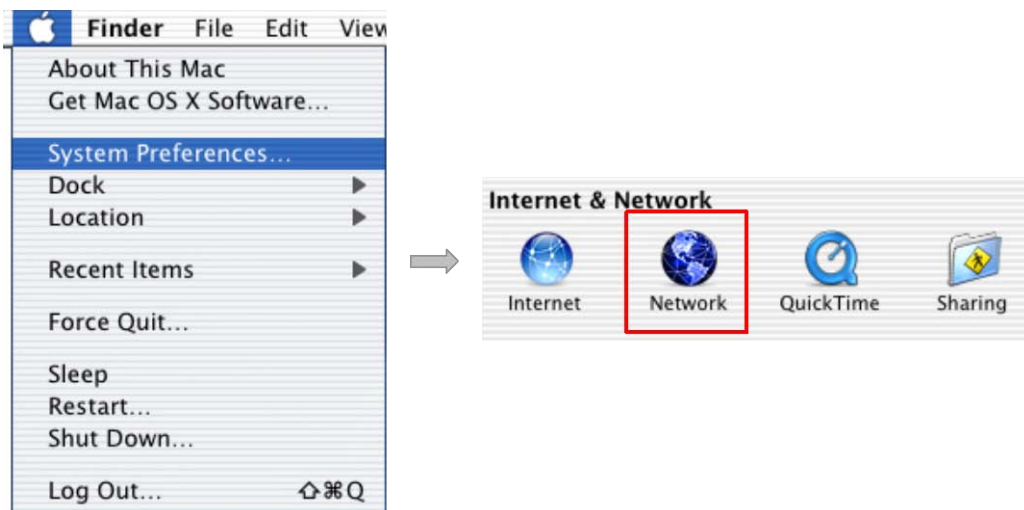


9. After the restart, plug the Ethernet adapter's USB cable into an available USB port on your computer. Then attach one end of an Ethernet cable to the Ethernet port on the adapter and the other end to your network switch, hub or router.
10. Mac system will detect the new hardware and show the name of the adapter, e.g. Ethernet Adaptor (en1) as in the example below.

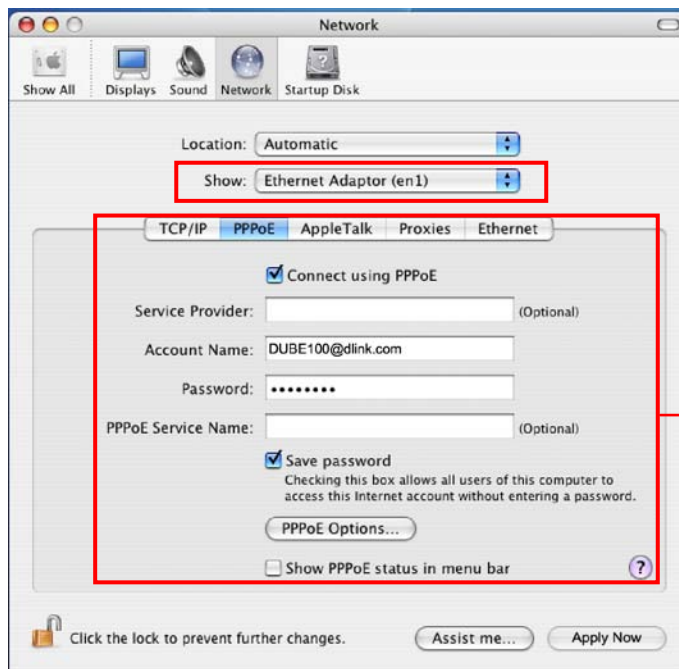


Configuring Network Settings and Making a Connection

1. To configure the network settings of adapter, click the **Apple** icon and select **System Preferences**. Then double-click the **Network** icon.

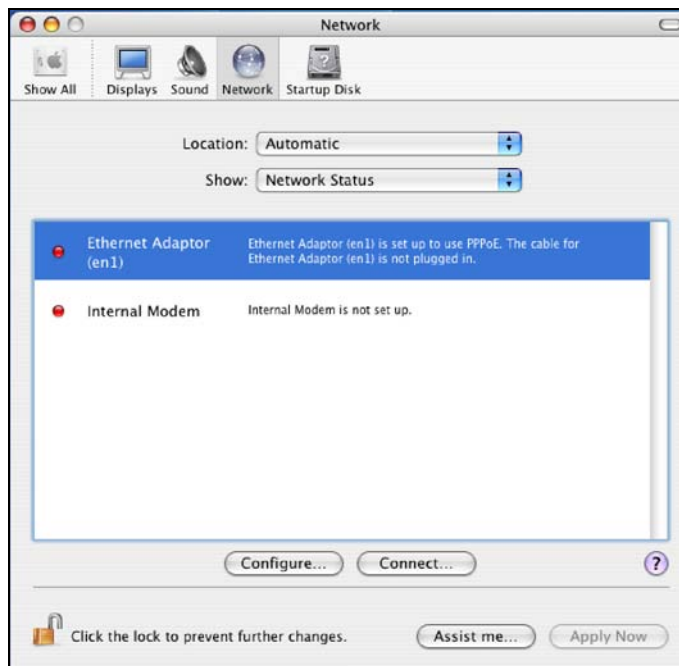


2. From the **Show** drop-down list, select the adapter to be configured, e.g., **Ethernet Adaptor (en1)**. Configure the network settings as required by your network and then click **Apply Now**.



Configure the network settings as required by your network environment.

3. To make a connection, select **Network Status** from the **Show** drop-down list and highlight the adapter representing the USB Ethernet adapter and click **Connect** to establish a network connection.

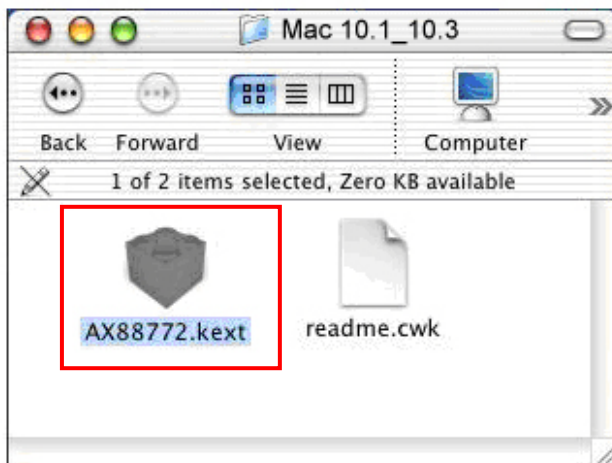


Mac OS X 10.1.x ~ 10.3.x

1. Insert the provided driver CD into your CD-ROM drive. Double-click the CD and navigate to the directory of **/Driver/Mac10.1_10.3**.



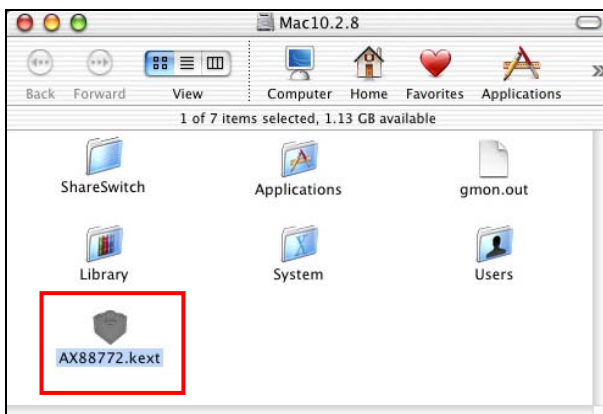
2. In the directory of **Mac10.1_10.3**, select and copy the folder named **AX88772.kext**.



3. On the desktop, double-click the start-up drive.



4. Paste the **AX88772.kext** to the root directory of the disk.



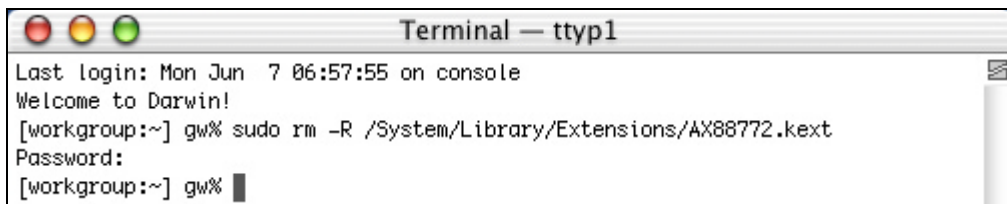
5. Open the terminal application by clicking **Go > Application > Utilities > Terminal**.



6. If there is one old driver in the **Extensions** directory, please remove it first by executing the command:

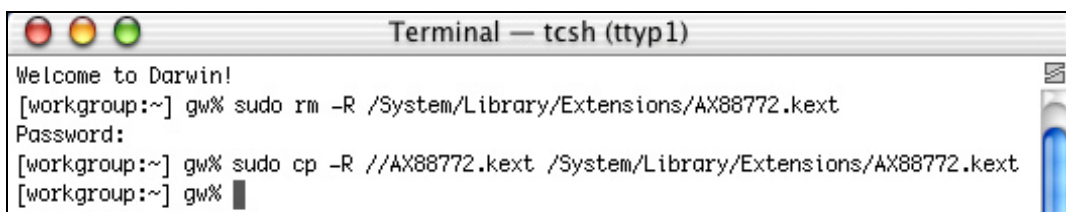
```
sudo rm -R /System/Library/Extensions/AX88772.kext
```

You will need to enter your password as prompted.

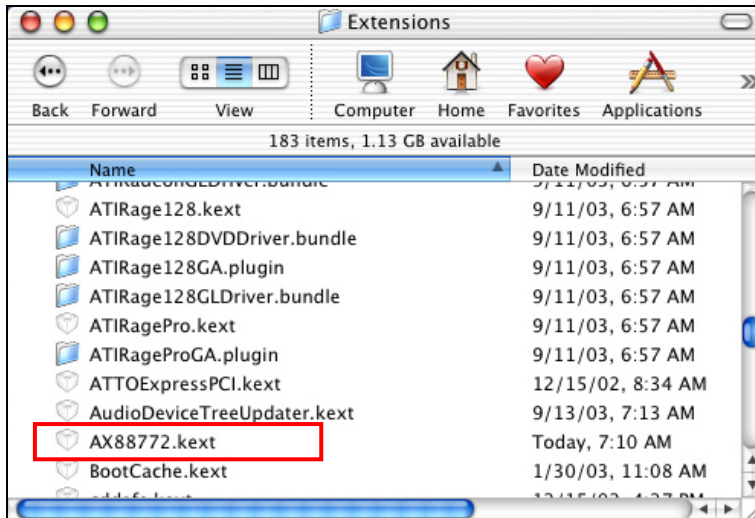


7. Paste the driver to the **Extensions** folder by the command line below:

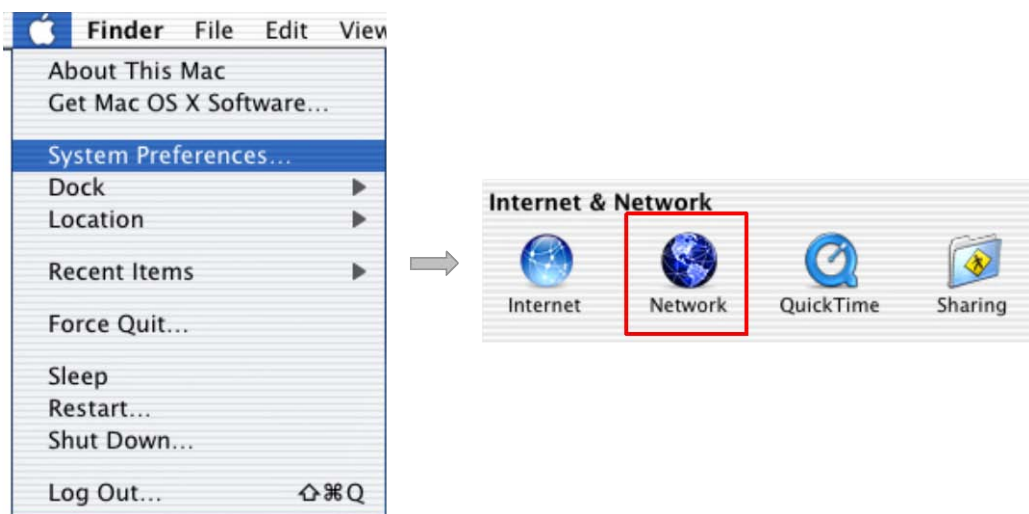
```
sudo cp -R //AX88772.kext /System/Library/Extensions/AX88772.kext
```



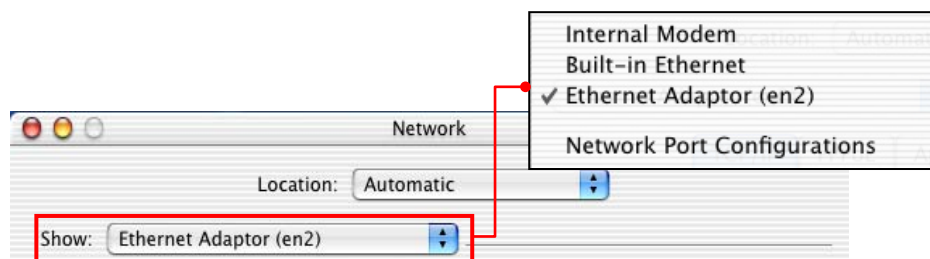
To verify the installation, you can go to **/System/Library/Extensions** to check if **AX88772.kext** is present.



8. Connect the Ethernet adapter to a free USB port.
9. Reboot your Mac.
10. Start **System Preferences** and select **Network**.



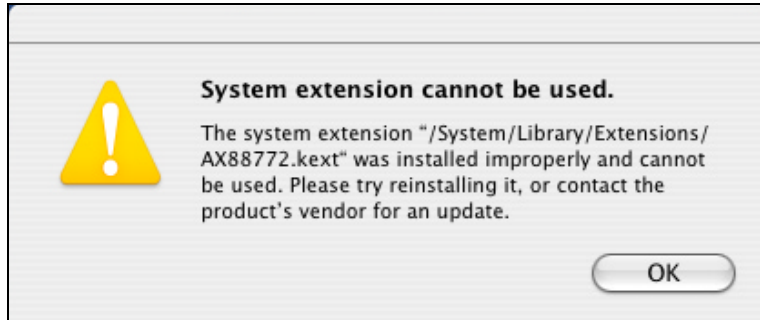
11. You will find that a new Ethernet network interface is available. It's usually named **Ethernet Adapter (en1)** or **Ethernet Adapter (en2)**.



Now you are ready to configure the network settings for network access.



You must use the command line to install the driver as instructed above. Simply copy and paste **AX88772.kext** to the **Extensions** folder will lead to an improper installation as the warning message below:



3. Specifications

Hardware	
Standards	USB 2.0, 1.1 IEEE 802.3: 10Base-T IEEE 802.3u: 100Base-TX
Data Transfer Rate	Ethernet: 10Mbps/20Mbps (Half/Full Duplex) Fast Ethernet: 100Mbps/200Mbps (Half/Full Duplex)
Embedded Buffers	20KB SRAM for RX Packets Buffering 8KB SRAM for TX Packets Buffering
Supported OS	Windows 98SE/ME/2000/XP(32-bit/64-bit) /Vista (32-bit/64-bit)/Windows 7 (32/64-bit) Mac OS 10-1 ~10.6
LEDs	100Mbps, Link
Power	Bus-Powered
Power Consumption	850mW
Power Management	Suspend Mode Hibernate Mode
Temperature	Operating: 0° C~ 40° C (32° F~ 104° F) Storage: -10° C~ 55° C (14° F~ 131° F)
Humidity	85% (Non-Condensing)
Certifications	CE, FCC

Limited Warranty

TRENDnet warrants its products against defects in material and workmanship, under normal use and service, for the following lengths of time from the date of purchase.

TU2-ET100– 3 Years Limited Warranty

AC/DC Power Adapter, Cooling Fan, and Power Supply carry 1 year warranty.

If a product does not operate as warranted during the applicable warranty period, TRENDnet shall reserve the right, at its expense, to repair or replace the defective product or part and deliver an equivalent product or part to the customer. The repair/replacement unit's warranty continues from the original date of purchase. All products that are replaced become the property of TRENDnet. Replacement products may be new or reconditioned. TRENDnet does not issue refunds or credit. Please contact the point-of-purchase for their return policies.

TRENDnet shall not be responsible for any software, firmware, information, or memory data of customer contained in, stored on, or integrated with any products returned to TRENDnet pursuant to any warranty.

There are no user serviceable parts inside the product. Do not remove or attempt to service the product by any unauthorized service center. This warranty is voided if (i) the product has been modified or repaired by any unauthorized service center, (ii) the product was subject to accident, abuse, or improper use (iii) the product was subject to conditions more severe than those specified in the manual.

Warranty service may be obtained by contacting TRENDnet within the applicable warranty period and providing a copy of the dated proof of the purchase. Upon proper submission of required documentation a Return Material Authorization (RMA) number will be issued. An RMA number is required in order to initiate warranty service support for all TRENDnet products. Products that are sent to TRENDnet for RMA service must have the RMA number marked on the outside of return packages and sent to TRENDnet prepaid, insured and packaged appropriately for safe shipment. Customers shipping from outside of the USA and Canada are responsible for return shipping fees. Customers shipping from outside of the USA are responsible for custom charges, including but not

limited to, duty, tax, and other fees.

WARRANTIES EXCLUSIVE: IF THE TRENDNET PRODUCT DOES NOT OPERATE AS WARRANTED ABOVE, THE CUSTOMER'S SOLE REMEDY SHALL BE, AT TRENDNET'S OPTION, REPAIR OR REPLACE. THE FOREGOING WARRANTIES AND REMEDIES ARE EXCLUSIVE AND ARE IN LIEU OF ALL OTHER WARRANTIES, EXPRESSED OR IMPLIED, EITHER IN FACT OR BY OPERATION OF LAW, STATUTORY OR OTHERWISE, INCLUDING WARRANTIES OF MERCHANTABILITY AND FITNESS FOR A PARTICULAR PURPOSE. TRENDNET NEITHER ASSUMES NOR AUTHORIZES ANY OTHER PERSON TO ASSUME FOR IT ANY OTHER LIABILITY IN CONNECTION WITH THE SALE, INSTALLATION MAINTENANCE OR USE OF TRENDNET'S PRODUCTS.

TRENDNET SHALL NOT BE LIABLE UNDER THIS WARRANTY IF ITS TESTING AND EXAMINATION DISCLOSE THAT THE ALLEGED DEFECT IN THE PRODUCT DOES NOT EXIST OR WAS CAUSED BY CUSTOMER'S OR ANY THIRD PERSON'S MISUSE, NEGLIGENCE, IMPROPER INSTALLATION OR TESTING, UNAUTHORIZED ATTEMPTS TO REPAIR OR MODIFY, OR ANY OTHER CAUSE BEYOND THE RANGE OF THE INTENDED USE, OR BY ACCIDENT, FIRE, LIGHTNING, OR OTHER HAZARD.

LIMITATION OF LIABILITY: TO THE FULL EXTENT ALLOWED BY LAW TRENDNET ALSO EXCLUDES FOR ITSELF AND ITS SUPPLIERS ANY LIABILITY, WHETHER BASED IN CONTRACT OR TORT (INCLUDING NEGLIGENCE), FOR INCIDENTAL, CONSEQUENTIAL, INDIRECT, SPECIAL, OR PUNITIVE DAMAGES OF ANY KIND, OR FOR LOSS OF REVENUE OR PROFITS, LOSS OF BUSINESS, LOSS OF INFORMATION OR DATA, OR OTHER FINANCIAL LOSS ARISING OUT OF OR IN CONNECTION WITH THE SALE, INSTALLATION, MAINTENANCE, USE, PERFORMANCE, FAILURE, OR INTERRUPTION OF THE POSSIBILITY OF SUCH DAMAGES, AND LIMITS ITS LIABILITY TO REPAIR, REPLACEMENT, OR REFUND OF THE PURCHASE PRICE PAID, AT TRENDNET'S OPTION. THIS DISCLAIMER OF LIABILITY FOR DAMAGES WILL NOT BE AFFECTED IF ANY REMEDY PROVIDED HEREIN SHALL FAIL OF ITS ESSENTIAL PURPOSE.

Governing Law: This Limited Warranty shall be governed by the laws of the state of California.

Some TRENDnet products include software code written by third party developers. These codes are subject to the GNU General Public License ("GPL") or GNU Lesser General Public License ("LGPL").

Go to <http://www.trendnet.com/gpl> or <http://www.trendnet.com> Download section and look for the desired TRENDnet product to access to the GPL Code or LGPL Code. These codes are distributed WITHOUT WARRANTY and are subject to the copyrights of the developers. TRENDnet does not provide technical support for these codes. Please go to <http://www.gnu.org/licenses/gpl.txt> or <http://www.gnu.org/licenses/lgpl.txt> for specific terms of each license.



TRENDnet[®]

Product Warranty Registration

Please take a moment to register your product online.
Go to TRENDnet's website at <http://www.trendnet.com/register>