



## Quick Installation Guide



**TU2-ET100**  
H/W: 3.0R

# Table of Contents

Español .....	1
1. Antes de iniciar .....	1
2. Cómo se instala .....	2
Troubleshooting .....	4

# 1. Antes de iniciar



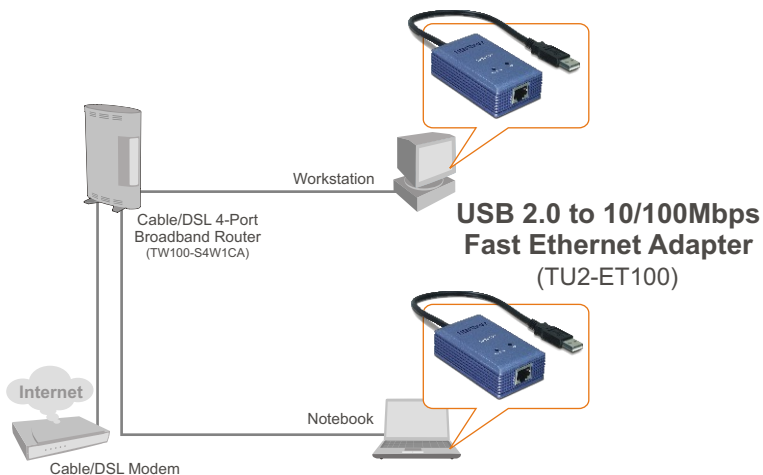
## Contenidos del paquete

- TU2-ET100
- Guía de instalación rápida
- CD-ROM del controlador

## Requisitos del sistema

- Unidad de CD-ROM
- CPU: 300 MHz o superior/ 800 MHz o superior (Windows Vista)
- Memoria: 256 MB o superior/ 512 MB o superior (Windows Vista)
- PC con un puerto USB 1.1 ó 2.0 disponible
- Windows Vista (32-bit/64-bit)/XP (32-bit/64-bit)/2000/ME/98SE, Mac OS X (10.1~10.4)

## Aplicación



## 2. Cómo se instala

**Nota:** Para la instalación del controlador con sistemas Windows 98SE y Me, consulte la guía del usuario en el CD-ROM del controlador.

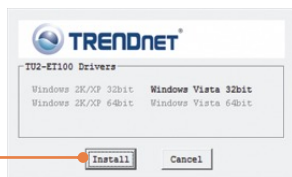
### Windows Vista/XP/2000

1. Inserte el CD-ROM del controlador en su unidad de CD-ROM.

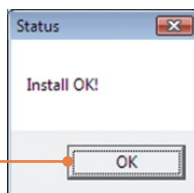
2. Haga clic en **Run Install.exe** (Ejecutar Install.exe) (sólo para Windows Vista)



3. Los controladores de su sistema operativo serán automáticamente detectados. Su sistema operativo será destacado en negrilla. Haga clic en **Install** (Instalar) para instalar el controlador.



4. Haga clic en **OK**.

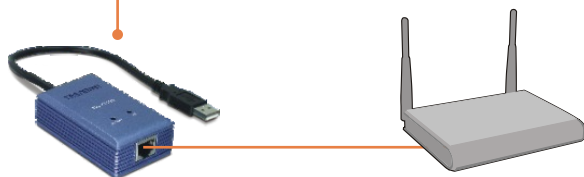
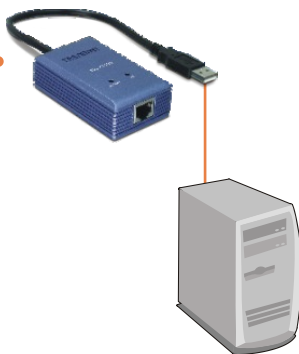


5. Retire de la unidad de CD-ROM de su PC el disco que contiene el controlador.

6. Conecte el adaptador a un puerto USB disponible de su PC.

7. Los controladores se instalarán de manera automática.

8. Conecte el cable RJ-45 del adaptador a un conmutador, enrutador o cable Módem o DSL.



**La instalación ha sido completada**

### Registre su producto

Para asegurar los más altos niveles de servicio y apoyo al cliente, registre su producto en línea en: [www.trendnet.com/register](http://www.trendnet.com/register)  
Gracias por elegir TRENDnet

**Q1: Can I connect or disconnect TU2-ET100 while the computer is on?**

**A1:** Yes, you can connect or disconnect TU2-ET100 while the computer is on because the USB interface is Plug-and-Play compliant and hot-pluggable.

**Q2: Windows is unable to recognize my hardware. What should I do?**

**A2:** First, make sure your computer meets the minimum requirements as specified in Section 1 of this Quick Installation Guide. Second, try plugging the adapter into a different USB port.

**Q3: Windows recognizes my new hardware, but I'm unable to connect to my network. What should I do?**

**A3:** First, verify that the network cable is securely connected from your switch or router to your adapter. Second, verify that the LEDs on your adapter are lit. Third, verify that the TCP/IP settings are set to **Obtain an IP address automatically**.

**Q4: How do I install this device on Windows 98SE, ME and Mac OS X?**

**A4:** Refer to the User Guide included on the Driver CD-ROM for installation instructions.

If you still encounter problems or have any questions regarding the **TU2-ET100**, please refer to the User's Guide included on the Driver CD-ROM or contact TRENDnet's Technical Support Department.

## Certifications

This equipment has been tested and found to comply with FCC and CE Rules.

Operation is subject to the following two conditions:

- (1) This device may not cause harmful interference.
- (2) This device must accept any interference received. Including interference that may cause undesired operation.



Waste electrical and electronic products must not be disposed of with household waste. Please recycle where facilities exist. Check with you Local Authority or Retailer for recycling advice.



**NOTE:** THE MANUFACTURER IS NOT RESPONSIBLE FOR ANY RADIO OR TV INTERFERENCE CAUSED BY UNAUTHORIZED MODIFICATIONS TO THIS EQUIPMENT. SUCH MODIFICATIONS COULD VOID THE USER'S AUTHORITY TO OPERATE THE EQUIPMENT.

### ADVERTENCIA

En todos nuestros equipos se mencionan claramente las características del adaptador de alimentación necesario para su funcionamiento. El uso de un adaptador distinto al mencionado puede producir daños físicos y/o daños al equipo conectado. El adaptador de alimentación debe operar con voltaje y frecuencia de la energía eléctrica domiciliar existente en el país o zona de instalación.



## TRENDnet Technical Support

### US • Canada

**Toll Free Telephone:** 1(866) 845-3673  
24/7 Tech Support



### Europe (Germany • France • Italy • Spain • Switzerland • UK)

**Toll Free Telephone:** +00800 60 76 76 67

English/Espanol - 24/7  
Francais/Deutsch - 11am-8pm, Monday - Friday MET

### Worldwide

**Telephone:** +(31) (0) 20 504 05 35

English/Espanol - 24/7  
Francais/Deutsch - 11am-8pm, Monday - Friday MET

## Product Warranty Registration

Please take a moment to register your product online.  
Go to TRENDnet's website at <http://www.trendnet.com/register>

**TRENDnet**<sup>®</sup>  
20675 Manhattan Place  
Torrance, CA 90501  
USA