



## Quick Installation Guide



**TU2-ET100**

# Table of Contents

Español .....	1
1. Antes de iniciar .....	1
2. Cómo se instala .....	2
Troubleshooting .....	6

# 1. Antes de iniciar



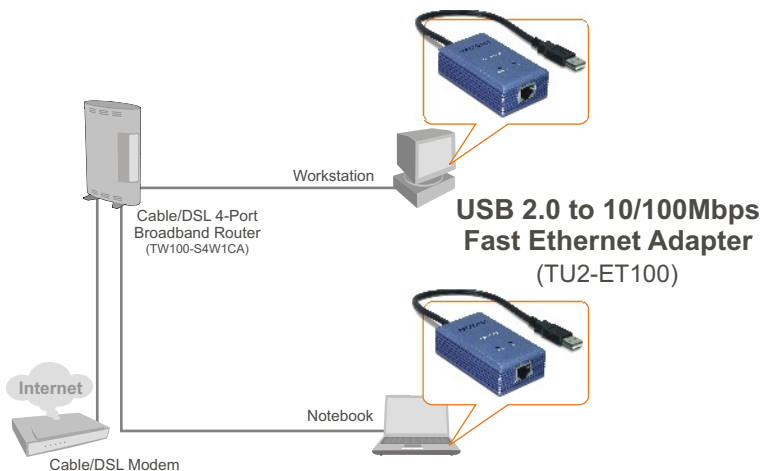
## Contenidos del paquete

- TU2-ET100
- Guía de instalación rápida
- CD-ROM del controlador

## Requisitos del sistema

- Unidad de CD-ROM
- CPU: Intel Pentium 300 MHz o superior
- Memoria: 256 MB o superior
- PC con un puerto USB 1.1 ó 2.0 disponible
- Windows XP/2000/ME/98SE, Mac OS X

## Aplicación



## 2. Cómo se instala

1. Inserte el CD-ROM del controlador en su unidad de CD-ROM.

2. Conecte el adaptador a un puerto USB disponible de su PC. Después, le aparecerá el “**Found New Hardware Wizard**” (Asistente para nuevo hardware encontrado).

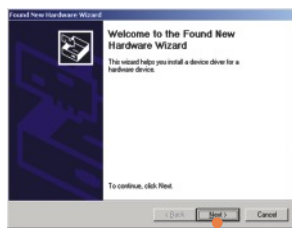


### Windows XP



3. Seleccione **No** y haga clic en **Next** (Siguiente).

### Windows 2000



3. Haga clic en **Next** (Siguiente).

## Windows XP

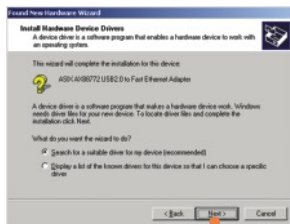


4. Seleccione **Install the software automatically** (Instalar el software automáticamente) y luego pulse **Next** (Siguiente).

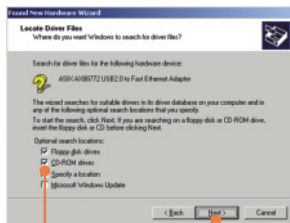


5. Haga clic en **Continue Anyway** (Continuar de todas formas).

## Windows 2000



4. Haga clic en **Search for a suitable driver for my device** (Buscar un controlador apropiado para mi dispositivo) (**Recomendado**) y después haga clic en **Next** (Siguiente).



5. Haga clic en **CD-ROM drive** (Unidad de CD-ROM) y luego pulse **Next** (Siguiente).

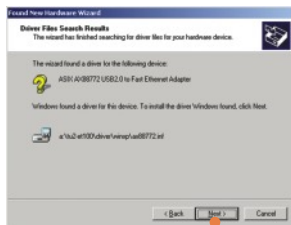
## Windows XP



6. Haga clic en **Finish**  
(Finalizar).

7. Vaya al paso 9.

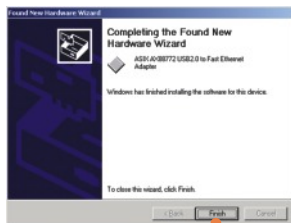
## Windows 2000



6. Haga clic en **Next**  
(Siguiente).

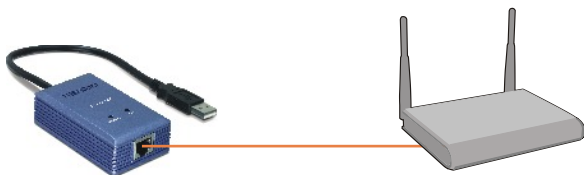


7. Haga clic en **Yes** (Sí).



8. Haga clic en **Finish**  
(Finalizar).

9. Conecte el cable RJ-45 del adaptador a un conmutador, enrutador o cable Módem o DSL.



**La instalación ha sido completada**

## Q1: Can I connect or disconnect TU2-ET100 while the computer is on?

**A1:** Yes, you can connect or disconnect TU2-ET100 while the computer is on because the USB interface is Plug-and-Play compliant and hot-pluggable.

## Q2: Windows is unable to recognize my hardware. What should I do?

**A2:** First, make sure your computer meets the minimum requirements as specified in Section 1 of this Quick Installation Guide. Second, try plugging the adapter into a different USB port.

## Q3: Windows recognizes my new hardware, but I'm unable to connect to my network. What should I do?

**A3:** First, verify that the network cable is securely connected from your switch or router to your adapter. Second, verify that the LEDs on your adapter are lit. Third, verify that the TCP/IP settings are set to **Obtain an IP address automatically**.

## Q4: How do I install this device on Windows 98SE and ME?

**A4:** Refer to the User Guide included on the Driver CD-ROM for installation instructions.

If you still encounter problems or have any questions regarding the **TU2-ET100**, please refer to the User's Guide included on the Driver CD-ROM or contact TRENDnet's Technical Support Department.

## Certifications

This equipment has been tested and found to comply with FCC and CE Rules.

Operation is subject to the following two conditions:

- (1) This device may not cause harmful interference.
- (2) This device must accept any interference received. Including interference that may cause undesired operation.



Waste electrical and electronic products must not be disposed of with household waste. Please recycle where facilities exist. Check with you Local Authority or Retailer for recycling advice.



**NOTE:** THE MANUFACTURER IS NOT RESPONSIBLE FOR ANY RADIO OR TV INTERFERENCE CAUSED BY UNAUTHORIZED MODIFICATIONS TO THIS EQUIPMENT. SUCH MODIFICATIONS COULD VOID THE USER'S AUTHORITY TO OPERATE THE EQUIPMENT.





# TRENDnet<sup>®</sup>

## TRENDnet Technical Support

### US • Canada

**Toll Free Telephone:** 1(866) 845-3673

24/7 Tech Support



### Europe (Germany • France • Italy • Spain • Switzerland • UK)

**Toll Free Telephone:** +00800 60 76 76 67

English/Espanol - 24/7

Francais/Deutsch - 11am-8pm, Monday - Friday MET

### Worldwide

**Telephone:** +(31) (0) 20 504 05 35

English/Espanol - 24/7

Francais/Deutsch - 11am-8pm, Monday - Friday MET

## Product Warranty Registration

Please take a moment to register your product online.

Go to TRENDnet's website at <http://www.trendnet.com>

## TRENDnet

3135 Kashiwa Street  
Torrance, CA 90505  
USA