



## Quick Installation Guide



**TU-S9**  
H/W: V1

# Table of Contents

English .....	1
1. Before You Start .....	1
2. How to Install .....	2
Troubleshooting .....	7

# 1. Before You Start



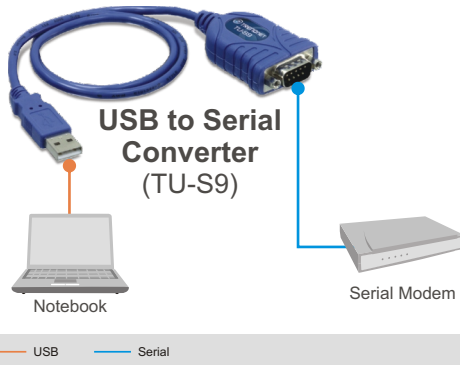
## Package Contents

- TU-S9
- Driver CD-ROM
- Multi Language Quick Installation Guide

## System Requirements

- CD-ROM Drive
- Computer with An Available USB 1.1 or 2.0 Port
- CPU: 300MHz or above / 800MHz or above  
[ Windows Vista / Mac OS X (10.1~10.5) ]
- Memory: 256MB RAM or above / 512MB RAM or above (Windows Vista)
- Windows Vista/2003 Server/XP/2000/ME/98SE/Mac OS X (10.1~10.5)
- RS-232 device (e.g. modem)
- RS-232 Male to Female Serial Cable (Optional)

## Application



## 2. How to Install

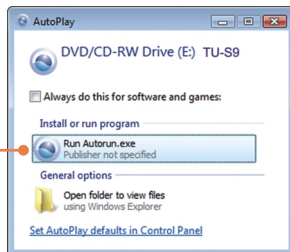
**Note:** Do not connect the TU-S9 until instructed to do so.

### Windows 98SE/ME/2000/XP/2003 Server/Vista

1. Turn on your computer and wait until the Windows desktop appears.

2. Insert the **Driver CD-ROM** into your CD-ROM drive.

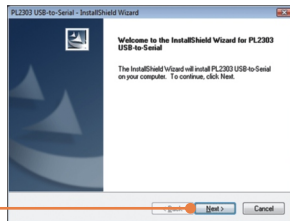
3. Click **Run Autorun.exe** (Windows Vista only).



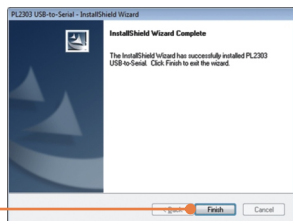
4. Click **Install Driver**.



5. Click **Next**.



6. Click **Finish**.



7. Connect the Adapter to an available USB port on your computer.

8. Drivers will install automatically.

9. Connect the Serial device to the TU-S9.



## Mac OS X (10.1 ~ 10.5)

1. Turn on your computer and wait until the Windows desktop appears.

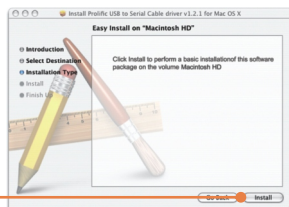
2. Insert the **Driver CD-ROM** into your CD-ROM drive.

3. Double-click on the TU-S9 CD-ROM icon on your desktop.

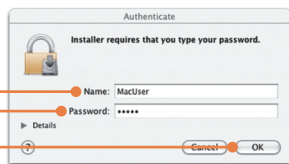




9. Click **Install**.



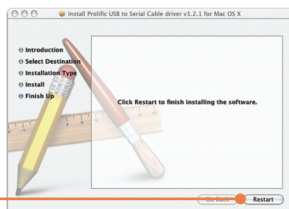
10. When the **Authenticate** screen appears, enter the **Name** and **Password** for your computer and then click **OK**.



11. Click **Continue Installation**.



12. Click **Restart**.



13. Connect the Adapter to an available USB port on your computer.



14. Connect Serial device to the TU-S9.

## Your installation is now complete.

For detailed information regarding the **TU-S9**, please refer to the User's Guide included on the Driver CD-ROM or TRENDnet's website at [www.trendnet.com](http://www.trendnet.com)

### Register Your Product

To ensure the highest level of customer service and support, please take a moment to register your product Online at: [www.TRENDnet.com/register](http://www.TRENDnet.com/register)

Thank you for choosing TRENDnet



**Q1: The autorun window does not appear on my Windows PC after I put in the Driver CD-ROM. What should I do?**

**A1:** Go to **Start -> Run**, type in **E:\autorun.exe** and then click **OK**.  
E:\represents the drive letter that is assigned to your CD-ROM drive.

**Q2: My computer is unable to recognize my hardware. What should I do?**

**A2:** First, make sure your computer meets the minimum requirements as specified in Section 1 of this Quick Installation Guide. Second, try plugging the TU-S9 into a different USB port on your computer.

**Q3: Can I use the TU-S9 with my serial keyboard, mouse, or joystick?**

**A3:** The TU-S9 does not support interrupt transfer mode devices. If your serial keyboard, mouse, or joystick is an HID Device, it is not supported.

**Q4: Can I connect or disconnect the USB cables while the computer is on?**

**A4:** Yes, you can connect or disconnect the USB cable while the computer is on, because the USB interface is Plug-and-Play and hot-pluggable.

**Q5: I am installing the TU-S9 on my Mac OS X but I don't remember my password. What should I do?**

**A5:** If you don't remember your password, you will not be able to install the TU-S9. An authentication error will appear if you try to continue with the installation. Go to the following Web page for steps on resetting your password: <http://support.apple.com/kb/HT1274>.

If you still encounter problems or have any questions regarding the **TU-S9 USB to Serial Converter**, please contact TRENDnet's Technical Support Department.

## Certifications

This equipment has been tested and found to comply with FCC and CE Rules.

Operation is subject to the following two conditions:

- (1) This device may not cause harmful interference.
- (2) This device must accept any interference received. Including interference that may cause undesired operation.



Waste electrical and electronic products must not be disposed of with household waste. Please recycle where facilities exist. Check with you Local Authority or Retailer for recycling advice.



**NOTE:** THE MANUFACTURER IS NOT RESPONSIBLE FOR ANY RADIO OR TV INTERFERENCE CAUSED BY UNAUTHORIZED MODIFICATIONS TO THIS EQUIPMENT. SUCH MODIFICATIONS COULD VOID THE USER'S AUTHORITY TO OPERATE THE EQUIPMENT.

### ADVERTENCIA

En todos nuestros equipos se mencionan claramente las características del adaptador de alimentación necesario para su funcionamiento. El uso de un adaptador distinto al mencionado puede producir daños físicos y/o daños al equipo conectado. El adaptador de alimentación debe operar con voltaje y frecuencia de la energía eléctrica domiciliar existente en el país o zona de instalación.



**TRENDnet**<sup>®</sup>

## Product Warranty Registration

Please take a moment to register your product online.  
Go to TRENDnet's website at <http://www.trendnet.com/register>

**TRENDnet**<sup>®</sup>

20675 Manhattan Place  
Torrance, CA 90501  
USA