



Quick Installation Guide



TU-ET100C

Table of Contents

Română	1
1. Înainte de a începe	1
2. Cum instalați	2
Depistarea problemelor	5

1. Inainte de a incepe



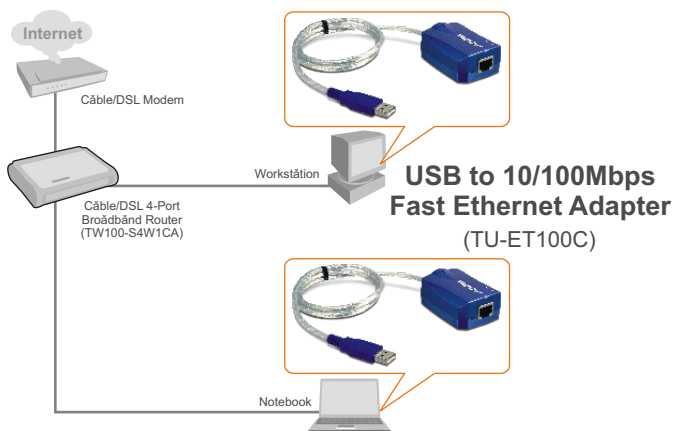
Continutul Pachetului

- TU-ET100C
- CD-ROM Driver
- Ghid de instalare rapida

Cerinte de Sistem

- CD-ROM Drive
- CPU: 300MHz sau mai mare
- Memorie: 256MB RAM sau peste
- Calculator cu un USB 1.1 disponibil
- Windows XP/2000/ME/98SE

Aplicatie



2. Instalarea

1. Introduceți CD-ROM Driver în CD-ROM drive.

2. Conectați adaptorul la un port USB disponibil la calculatorul dvs.

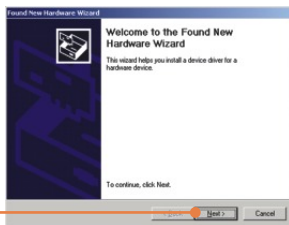


Windows XP

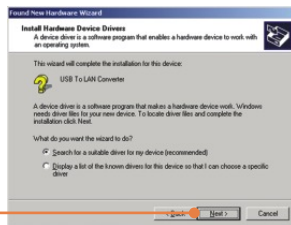
3. Driverul se va instala automat.

Windows 2000

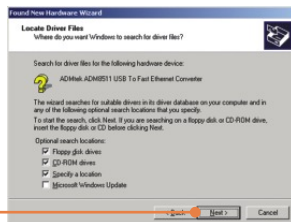
3. Clic pe Next.



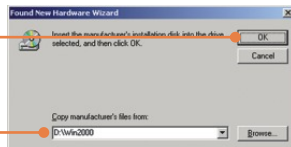
4. Selectați **Search for a suitable driver for my device (Caută driverul corespunzător pentru dispozitivul meu) (recomandat)** apoi dați clic pe **Next**.



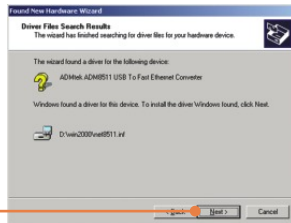
5. Dați clic pe **Specify a location (Specifică o locație)** și apoi dați clic pe **Next**.



6. Tastați **D:\Win2000**, unde **D** reprezintă litera de drive atribuită CD-ROM drive. Apoi dați clic pe **OK**.



7. Clic pe **Next**.



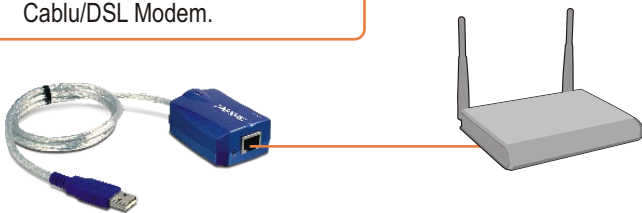
8. Clic pe **Yes**.



9. Clic pe **Finish**.



10. Conectați un cablu RJ-45 de la Adaptor la un Switch, Router sau Cablu/DSL Modem.



Instalarea este acum completa!

Pentru Windows 98SE/ME, consultati sectiunea "Depistarea problemelor", pentru mai multe detalii.

Inregistrati-va produsul

Pentru a va asigura ca veti primi cel mai ridicat nivel de suport, va rugam sa va inregistrati electronic produsul la

www.trendnet.com/register

Va multumim pentru ca ati ales TRENDnet

Întrebarea 1: Pot conecta sau deconecta TU-ET100C în timp ce funcționează calculatorul?

Răspunsul 1: Da, puteți conecta sau deconecta TU-ET100C în timp ce calculatorul funcționează pentru că interfața USB este de tipul Plug-and-Play și se poate conecta în timpul funcționării.

Întrebarea 2: Windows nu recunoaște hardware. Ce-ar trebui să fac?

Răspunsul 2: În primul rând asigurați-vă dacă calculatorul dvs. îndeplinește cerințele minime specificate la Capitolul 1 din Ghidul de Instalare Rapida. În al doilea rând încercați să conectați adaptorul la un port USB diferit.

Întrebarea 3: Windows recunoaște hardware, dar nu-l pot conecta la rețea. Ce-ar trebui să fac?

Răspunsul 3: Mai întâi verificați dacă cablul RJ-45 Ethernet este conectat corect de la switch sau router la adaptor. În al doilea rând verificați dacă LED-ul de la adaptor este aprins. În al treilea rând verificați dacă setările TCP/IP sunt făcute pentru **Obtain an IP address automatically (Obține automat o adresă IP)**.

Întrebarea 4: Cum să instalez acest dispozitiv cu Windows Me?

Răspunsul 4: Urmăriți etapele de mai jos:

1. Introduceți **CD-ROM Driver** în CD-ROM drive de la calculatorul dvs.
2. Când apare **Add New Hardware Wizard** selectați **Automatic search for a better driver (Recomandat)**, dați clic pe **Next**, și apoi clic pe **Finish**.
3. Dați clic pe **Yes** pentru a restarta calculatorul.

Întrebarea 5: Cum să instalez acest dispozitiv cu Windows 98?

Răspunsul 5: Urmăriți etapele de mai jos:

1. Introduceți **CD-ROM Driver** în CD-ROM drive de la calculatorul dvs.
2. Când apare **Add New Hardware Wizard** dați clic pe **Next**.
3. Selectați **Search for the best driver for your device (Recomandat)**, și dați clic pe **Next**.
4. Dați clic pe **Specify a location**, tastați **D:\Win98**, și dați clic pe **Next**.
5. Dați clic pe **Next**.
6. Introduceți **CD-ul Windows 98SE** în CD-ROM driver și dați clic pe **OK**.
7. Dați clic pe **Finish**.
8. Dați clic pe **Yes** pentru a restarta calculatorul.

Dacă mai întâmpinați probleme sau aveți întrebări privind TU-ET100C, vă rugăm luați legătura cu Serviciul de Asistență Tehnică TRENDnet.

Limited Warranty

TRENDnet warrants its products against defects in material and workmanship, under normal use and service, for the following lengths of time from the date of purchase.

TU-ET100C - 5-Year Warranty

If a product does not operate as warranted above during the applicable warranty period, TRENDnet shall, at its option and expense, repair the defective product or deliver to customer an equivalent product to replace the defective item. All products that are replaced will become the property of TRENDnet. Replacement products may be new or reconditioned.

TRENDnet shall not be responsible for any software, firmware, information, or memory data of customer contained in, stored on, or integrated with any products returned to TRENDnet pursuant to any warranty.

There are no user serviceable parts inside the product. Do not remove or attempt to service the product through any unauthorized service center. This warranty is voided if (i) the product has been modified or repaired by any unauthorized service center, (ii) the product was subject to accident, abuse, or improper use (iii) the product was subject to conditions more severe than those specified in the manual.

Warranty service may be obtained by contacting TRENDnet office within the applicable warranty period for a Return Material Authorization (RMA) number, accompanied by a copy of the dated proof of the purchase. Products returned to TRENDnet must be pre-authorized by TRENDnet with RMA number marked on the outside of the package, and sent prepaid, insured and packaged appropriately for safe shipment.

WARRANTIES EXCLUSIVE: IF THE TRENDNET PRODUCT DOES NOT OPERATE AS WARRANTED ABOVE, THE CUSTOMER'S SOLE REMEDY SHALL BE, AT TRENDNET'S OPTION, REPAIR OR REPLACEMENT. THE FOREGOING WARRANTIES AND REMEDIES ARE EXCLUSIVE AND ARE IN LIEU OF ALL OTHER WARRANTIES, EXPRESSED OR IMPLIED, EITHER IN FACT OR BY OPERATION OF LAW, STATUTORY OR OTHERWISE, INCLUDING WARRANTIES OF MERCHANTABILITY AND FITNESS FOR A PARTICULAR PURPOSE. TRENDNET NEITHER ASSUMES NOR AUTHORIZES ANY OTHER PERSON TO ASSUME FOR IT ANY OTHER LIABILITY IN CONNECTION WITH THE SALE, INSTALLATION, MAINTENANCE OR USE OF TRENDNET'S PRODUCTS.

TRENDNET SHALL NOT BE LIABLE UNDER THIS WARRANTY IF ITS TESTING AND EXAMINATION DISCLOSE THAT THE ALLEGED DEFECT IN THE PRODUCT DOES NOT EXIST OR WAS CAUSED BY CUSTOMER'S OR ANY THIRD PERSON'S MISUSE, NEGLIGENCE, IMPROPER INSTALLATION OR TESTING, UNAUTHORIZED ATTEMPTS TO REPAIR OR MODIFY, OR ANY OTHER CAUSE BEYOND THE RANGE OF THE INTENDED USE, OR BY ACCIDENT, FIRE, LIGHTNING, OR OTHER HAZARD.

LIMITATION OF LIABILITY: TO THE FULL EXTENT ALLOWED BY LAW TRENDNET ALSO EXCLUDES FOR ITSELF AND ITS SUPPLIERS ANY LIABILITY, WHETHER BASED IN CONTRACT OR TORT (INCLUDING NEGLIGENCE), FOR INCIDENTAL, CONSEQUENTIAL, INDIRECT, SPECIAL, OR PUNITIVE DAMAGES OF ANY KIND, OR FOR LOSS OF REVENUE OR PROFITS, LOSS OF BUSINESS, LOSS OF INFORMATION OR DATA, OR OTHER FINANCIAL LOSS ARISING OUT OF OR IN CONNECTION WITH THE SALE, INSTALLATION, MAINTENANCE, USE, PERFORMANCE, FAILURE, OR INTERRUPTION OF THE POSSIBILITY OF SUCH DAMAGES, AND LIMITS ITS LIABILITY TO REPAIR, REPLACEMENT, OR REFUND OF THE PURCHASE PRICE PAID, AT TRENDNET'S OPTION. THIS DISCLAIMER OF LIABILITY FOR DAMAGES WILL NOT BE AFFECTED IF ANY REMEDY PROVIDED HEREIN SHALL FAIL OF ITS ESSENTIAL PURPOSE.

Governing Law: This Limited Warranty shall be governed by the laws of the state of California.

Note: AC/DC Power Adapter, Cooling Fan, Power Supply, and Cables, carry 1-Year Warranty

Certifications

This equipment has been tested and found to comply with FCC and CE Rules.

Operation is subject to the following two conditions:

- (1) This device may not cause harmful interference.
- (2) This device must accept any interference received. Including interference that may cause undesired operation.



Waste electrical and electronic products must not be disposed of with household waste. Please recycle where facilities exist. Check with you Local Authority or Retailer for recycling advice.



NOTE: THE MANUFACTURER IS NOT RESPONSIBLE FOR ANY RADIO OR TV INTERFERENCE CAUSED BY UNAUTHORIZED MODIFICATIONS TO THIS EQUIPMENT. SUCH MODIFICATIONS COULD VOID THE USER'S AUTHORITY TO OPERATE THE EQUIPMENT.

ADVERTENCIA EN CASO DE REQUERIR AC ADAPTER

En todos nuestros equipos se mencionan claramente las características del adaptador de alimentación necesario para su funcionamiento. El uso de un adaptador distinto al mencionado puede producir daños físicos y/o daños al equipo conectado.



TRENDnet Technical Support

US • Canada

Toll Free Telephone: 1(866) 845-3673

24/7 Tech Support



Europe (Germany • France • Italy • Spain • Switzerland • UK)

Toll Free Telephone: +00800 60 76 76 67

English/Espanol - 24/7

Francais/Deutsch - 11am-8pm, Monday - Friday MET

Worldwide

Telephone: +(31) (0) 20 504 05 35

English/Espanol - 24/7

Francais/Deutsch - 11am-8pm, Monday - Friday MET

Product Warranty Registration

Please take a moment to register your product online.

Go to TRENDnet's website at <http://www.trendnet.com/register>

TRENDnet[®]
20675 Manhattan Place
Torrance, CA 90501
USA