



User's Guide

TS-I300
TS-I300W

TABLE OF CONTENTS

ABOUT THIS GUIDE	4
GETTING STARTED	5
GENERAL FEATURES	6
PACKAGE CONTENTS	7
PRODUCT VIEW	8
LEDs	8
Buttons	10
Fan and Ventilator	10
Using the Base Holder	10
INSTALLING AND CONNECTING	11
NETWORKING APPLICATION	11
INSTALLING THE HDD	12
INSTALLING THE STORAGE SERVER	14
Connecting to the Network	14
Connecting to a Client Workstation	14
Expanding the USB Devices	14
USING THE STORAGE SERVER	15
Configuring a Fixed IP Address	15
Accessing the Storage server	18
EASY SEARCH	19
Using Easy Search	19
WEB CONFIGURATION	23
WEB CONFIGURATION UTILITY	23
CONFIGURATION - BASIC	25
Basic → LAN	25
Basic → Global	26
Basic → Time Zone	27
CONFIGURATION - ADVANCED	28

Advanced → Account.....	28
Advanced → Session.....	30
Advanced → Wireless(For Wireless Model)	34
Advanced → Performance	35
Advanced → FTP Server	36
Advanced → E-mail Alerts	38
Advanced → Disk Utility.....	39
Advanced → Time Zone.....	40
Advanced → UPnP AV.....	41
Advanced → Status.....	42
CONFIGURATION - MAINTENANCE	43
Maintenance → Firmware Upload.....	43
Maintenance → Configuration.....	44
CONFIGURATION - LOGOUT	45
DOWN LOADING FILES.....	46
ENTERING DOWNLOAD PAGE	46
DOWNLOAD SCHEDULING	48
SCHEDULE LIST.....	50
LOGOUT.....	51
PRODUCT SPECIFICATION	52
Standards.....	52
Connecting Ports	52
Buttons	52
LEDs	53
Management.....	53
Operating System Support.....	53
Environmental and Physical.....	53
EMI Compliance.....	54

ABOUT THIS GUIDE

This manual provides instructions and illustrations on how to use your **Network Attached Storage (with Wireless AP/Client)**, including:

- Chapter 1, **Getting Started**, introduce the general information and features of the storage server.
- Chapter 2, **Installing and Connecting**, explains how to install and access the storage server.
- Chapter 3, **Web Configuration**, completes the configuration using the web browser.
- Chapter 4, **Downloading Files**, helps you to set up downloading schedule.
- Chapter 5, **Product Specification**.

Please note that the illustrations or setting values in this manual are **FOR YOUR REFERENCE ONLY**. The actual settings and values depend on your system and network. If you are not sure about the respective information, please ask your network administrator or MIS staff for help.

1

GETTING STARTED

Congratulations on purchasing your **Network Storage Enclosure (with Wireless AP/Client)**, the easiest and fastest way to share data, file, and resource in your SOHO or home network. You can choose the wireless model or wired model to deploy the network according to your need.

This storage server is the value-added equipment in your network that allows you to control file-sharing needs within a small office/home office (SOHO) environment. With expandable function (through its two USB ports) in a compact form-factor, the storage server is ideal for sharing data, rich-media files, and for storage in a small office, remote corporate office or residential gateway environments.

General Features

- ◆ Compact-sized design.
- ◆ Provide one 10/100Mbps LAN port (support Auto MDI/MDIX).
- ◆ Provide two USB2.0 ports (support Hot-plug function).
- ◆ Support external USB storage drives (Hard-disk, Flash-disk, and CD-ROM drive).
- ◆ Two operating modes support: Open mode and Account mode.
- ◆ No setup necessary in Open mode.
- ◆ Support IP assignment for DHCP and Static IP.
- ◆ Support IP address filtering for Ethernet access with either DENY or ALLOW setting.
- ◆ Provide disk format and scan disk functions.
- ◆ Provide download assistance, making users download files without PC and schedule-able (support ftp and http).
- ◆ Provide FTP Server service.
- ◆ Support NTP (network time protocol).
- ◆ Web-based administrative program is stored in flash ROM of the storage server.
- ◆ Firmware upgrade-able by Web-based administrative program.
- ◆ Support UPnP for Windows XP.
- ◆ Provide an Easy Search program for different IP domain settings.

Package Contents

Unpack the package and check all the items carefully, and be certain that you have:

- ◆ One TS-I300 or TS-I300W
- ◆ One External Antenna (for wireless model).
- ◆ One AC adapter and power cord.
- ◆ One Base Holder.
- ◆ One Ethernet Cable (RJ-45 connector).
- ◆ Four mounting screws of fixed to HDD.
- ◆ One Quick Installation Guide.
- ◆ One Installation CD-ROM that contains the manual files.

If any item contained is damaged or missing, please contact your local dealer immediately. Also, keep the box and packing materials in case you need to ship the unit in the future.

NOTE: The HDD (hard disk drive) is not included in the package. Please prepare a 3.5" HDD by yourself.

Product View



LEDs

There are six LEDs on the front panel:



LEDs on the Front Panel

- **Power** – A steady **Green** light indicates the storage server is powered on.
- **LAN** – A steady **Green** light indicates the storage server has a good connection to your network. When it blinks, the storage server is receiving/ transmitting data from/to the network.
- **HDD** – A blinking **Green** light indicates the HDD is reading/ writing data.
- **HDD Full** – A blinking **Orange** light indicates the HDD is getting full (95%). A steady **Orange** light indicates the HDD is complete full (100%).
- **USB** – The LED off indicates no USB devices connected to the storage. When you are connecting a USB device to the storage server, the LED starts blinking **Green** first, and then becomes a steady **Green** light to indicate the connection is OK; the **Orange** light indicates the connection failed. When you are unmounting the storage server, it blinks **Orange**.

- Support Real time clock (RTC)
- Web-based administrative program is stored in flash ROM o
- No setup necessary in open mode.
- Firmware upgrade-able by Windows-based
- **WLAN (TS-2500W only)** – A steady **Green** light indicates the storage server has a good connection to your wireless network.
 - Support Windows 98/ME/NT/2000/XP and Linux SMB.
 - Provide FTP Server service
 - When it blinks, the storage server is receiving/transmitting data from/to the wireless network.
 - Support UPnP for windows XP.
- **HDD Full/USB/WLAN** three LEDs-
 - Provide an easy-search program for different IP domain setPress the Reset button for 5 seconds until these three LEDs are blinking transfer to revolving lamp. When factory default setting is completed , three LEDs will turn off.

Buttons

There are three buttons on the storage server:

- **Power button** – Press to turn on the storage server. Press and hold for 5 seconds to turn off.
- **Unmount button** – Press to safely remove the connected USB devices.
- **Reset button** – Press to restart the storage server. Press and hold for 5 seconds to reset the storage server.(**HDD Full/USB/WLAN** will be blinking/ revolving/turn off)

Fan and Ventilator

The fan and ventilator are designed to cool the HDD. **DO NOT** block or cover the ventilator for air circulation.

Using the Base Holder

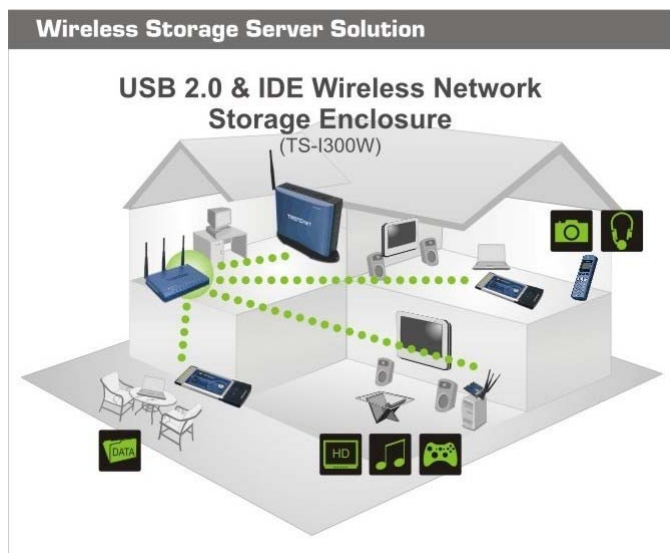
According to your working environment, you can set up the storage server as a “Stand mode” by putting it onto the provided base holder.

2

INSTALLING AND CONNECTING

Networking Application

The following diagram explains the application of your storage server.



Storage Server in Your Network Environment

Installing the HDD

1. Disconnect the power cord. Remove two screws on the rear panel to detach the cover.



2. Connect the IDE cable and power cable.



3. Place the HDD onto the metal bracket, and secure it to the storage server with four mounting screws.



4. Replace the cover and secure with two screws.

NOTE:

1. Make sure to adjust the HDD's jumper to "Master" position.
2. When the HDD is installed, the system will automatically perform format (File system type: EXT2) as you turn on the storage server.

Installing the Storage server

Follow these steps for a trouble-free start of storage server operations with your storage server.

Connecting to the Network

1. Confirm proper operation of the Gateway/Hub to be connected in the network.
2. Connect the storage server to the Gateway/Hub using the Ethernet cable.
3. Connect the power adapter of the storage server to the wall outlet. This will supply power to the storage server immediately.

Connecting to a Client Workstation

For some specific purposes, you may need to connect the storage server to a client workstation directly. For example, you build a direct connection between your desktop PC and the storage server to configure the storage server. In this event, you should set up the computer's IP address as instructions in next section.

Expanding the USB Devices

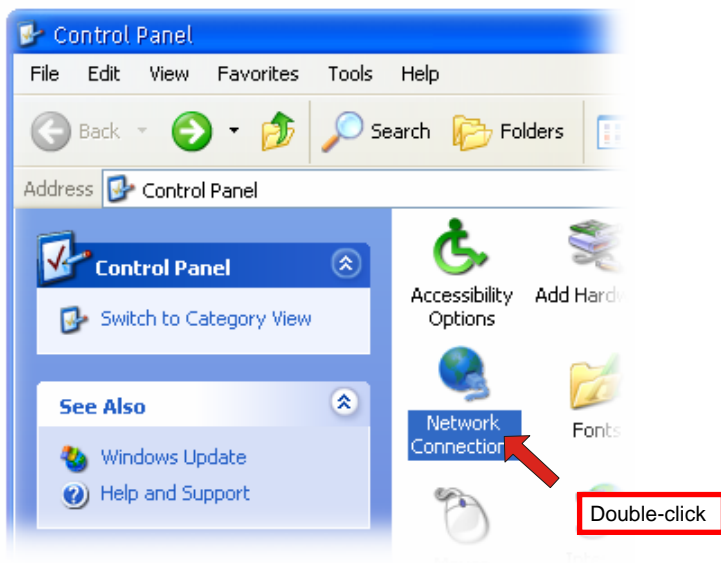
The storage server provides two USB ports that allow you to expand the storage server's function, such as connecting a large storage device. To connect the USB device, simply plug the USB device into one of the storage server's USB ports. Alternately, you can connect the USB device through a USB cable. In addition, you can connect a USB Hub to expand the USB connection.

Using the Storage server

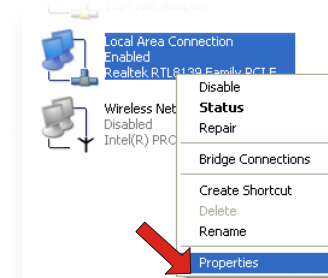
Configuring a Fixed IP Address

When you connect your computer to the storage server directly to configure the storage server, you need to check the computer's IP address, and set up the IP address within the storage server's IP address range.

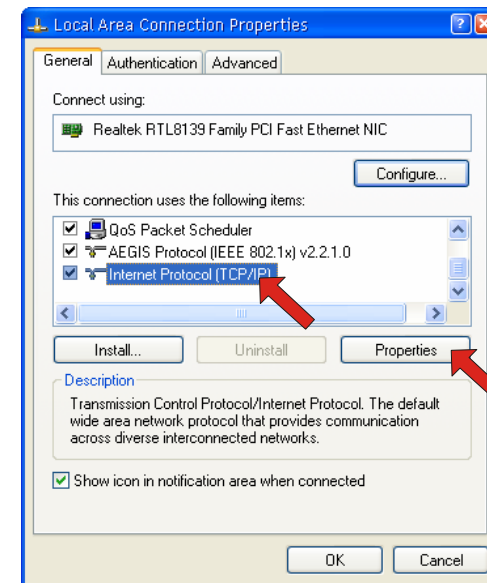
1. Click **Start > Control Panel** to open the Control Panel window.
2. Double-click the **Network Connection** icon to open the Network Connection window.



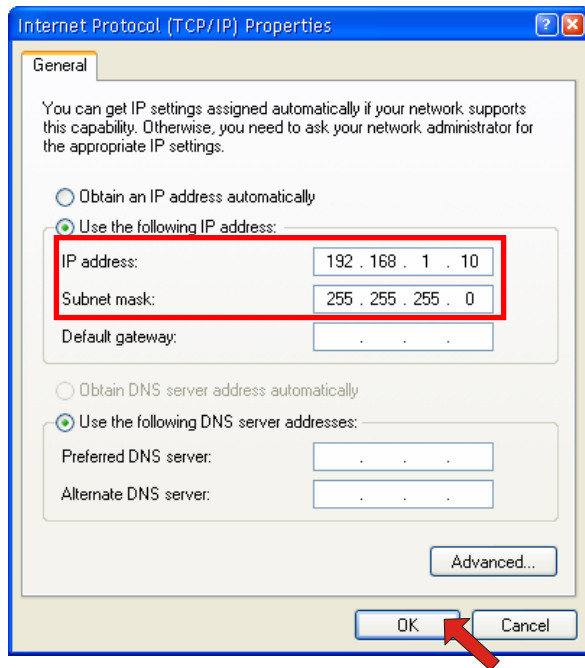
3. Right-click the Local Area Connection icon and click *Properties* from the shortcut menu.



4. When the Local Area Connection Properties window appears, choose **General** tab and select **Internet Protocol [TCP/IP]**, and then click **Properties** to bring up the Internet Protocol [TCP/IP] Properties window.



- To configure a fixed IP address, check the “Use the following IP address” option. Then, enter an IP address into the empty field. Suggested IP Address is **192.168.1.x** (x is 3~254), and suggested Subnet Mask is **255.255.255.0**.

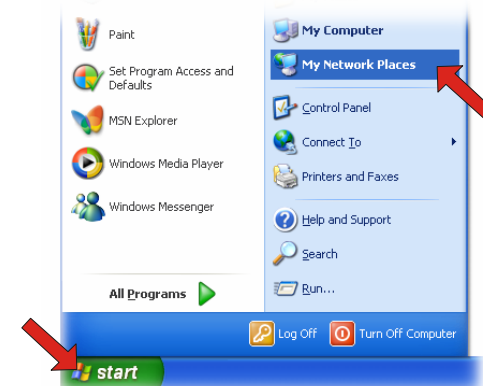


- Click **OK** to complete the configuration.

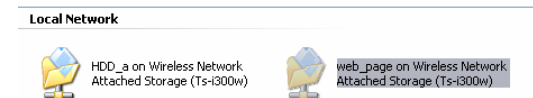
Accessing the Storage server

Since you have made the connection between your computer and the storage server, and configured the computer’s IP address, you can access the storage server through the following steps.

- Click **Start > My Network Places**.



- Double-click the **web_page** on **Network Attached Storage (Nas)** shared folder, and then double-click the **goweb** item to launch your web browser and enter the web configuration utility. The login window will show as below.



Network Attached Storage Server

Please enter User name and Password

User name

Password

Download Schedule Config Cancel

Enter the User name and password, and select one option to proceed.

To enter the configuration utility, type **admin** in User name box and **admin** in Password box, and then click the **Config** button. Clicking the **Download Schedule** button allows you to enter the Download page.

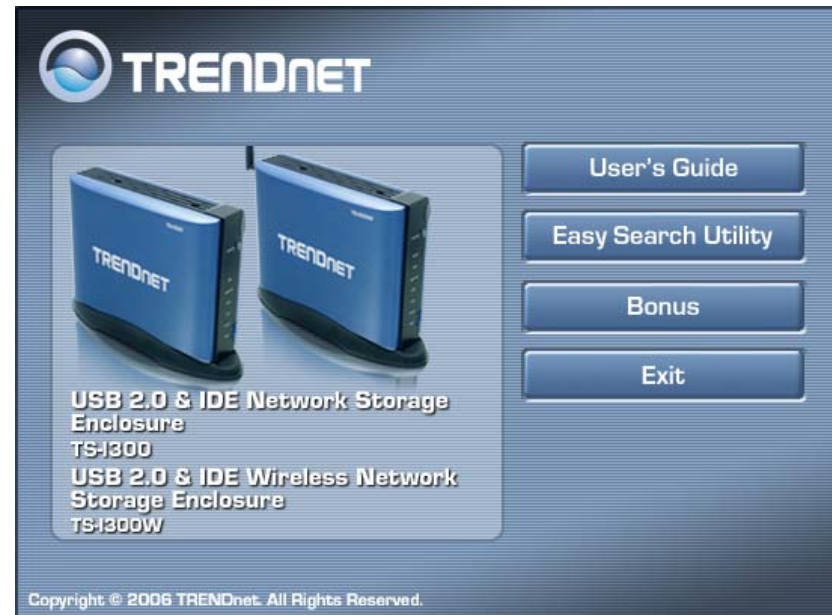
NOTE: Only the administrator can access the Configuration Utility by clicking the *Config* button. The users can only access the *Download Scheduling*.

Easy Search

To access and manage the storage server easily, the conveniently utility **Easy Search** is provided for you in the Installation CD-ROM. **Easy Search** is a tool that allows you to set up the storage server's connection.

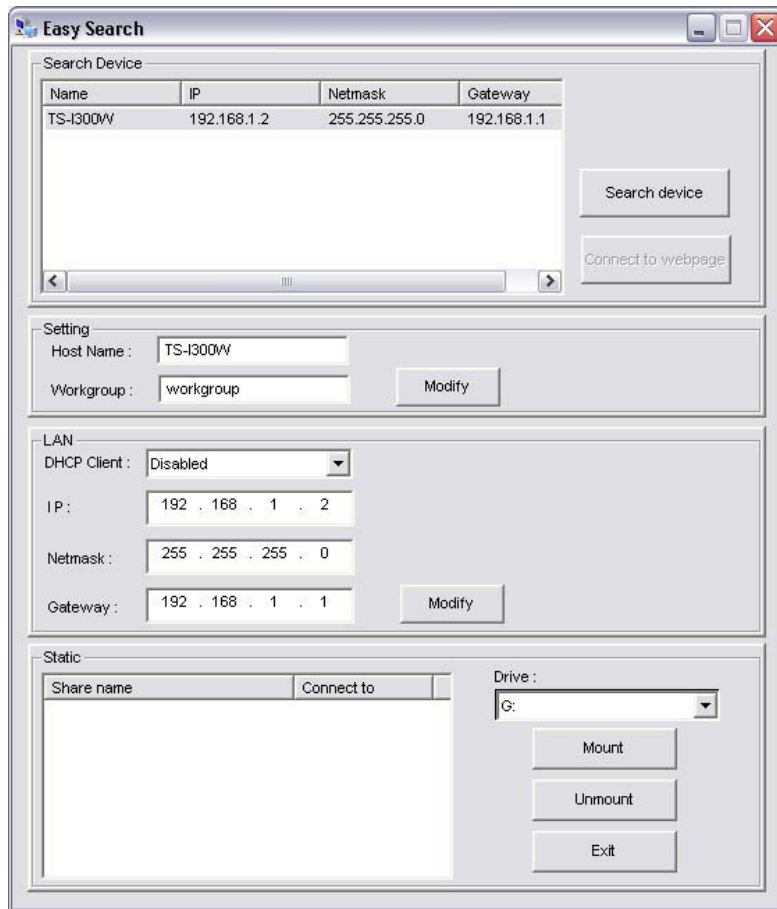
Using Easy Search

1. Insert the Installation CD-ROM into your computer's CD-ROM drive to initiate the Auto-Run program.



Autorun Screen of Installation CD-ROM

2. Click the **Easy Search Utility** button to launch the utility. The control panel will appear as below.



Control panel of Easy Search

- **Search Device** – When launching the utility, it will search the connected storage server(s) automatically, and display the results in the list. To refresh the list, click the **Search device** button again. Clicking the **Connect to webpage** button will lead you to the web configuration utility.
- **Setting** – Assign the **Hostname** and **Workgroup** for the storage server.
- **LAN** – Select one storage server in the device list, then you can change its settings in this field. When you change the settings, click the **Modify** button to apply changed configuration.
- **Static** – When you connect the **USB device** to the storage server, click the **mount / unmount** button to attach/remove the device to your system. Click the **Exit** button to close the utility.

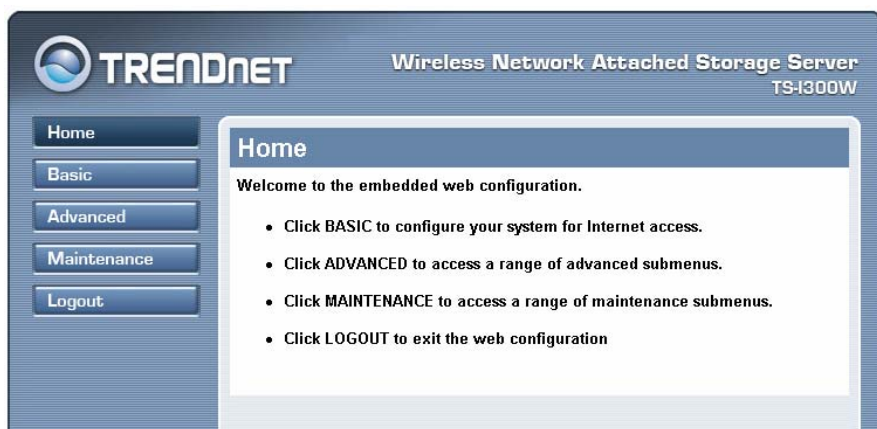
3

WEB CONFIGURATION

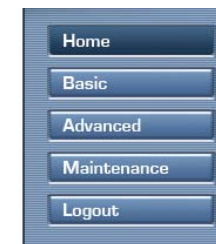
You can access and manage the storage server through a web browser. This chapter provides you with instructions of the Web Configuration Utility, and explains how to set up your storage server with the web browser.

Web Configuration Utility

You must have do *P.15-Using the Storage Server* step first, then open IE and type the default storage IP:192.168.1.2. Login the web configuration utility as described in the previous section. The Home menu will display as below.



There is a menu bar in the top of the configuration page, containing five items that allow you to set up your storage server.



The Menu Bar

- **Home** – main screen of the utility, providing the brief instructions of the buttons on menu bar.
- **Basic** – allows you to configure your storage server for Internet access through a step-by-step procedure.
- **Advanced** – contains more submenus that allow you to set up advanced configuration.
- **Maintenance** – provides maintenance tasks for the storage server, such as upgrading firmware and reloading factory defaults.
- **Logout** – clicks to exit web configuration utility.

Configuration - Basic

The **Basic** menu contains three steps that will guide you through the basic configuration for the storage server. Click **Basic** in the top menu bar to start the step-by-step configuration.

LAN	
DHCP Client	Disabled
IP Address	192.168.1.2
IP Subnet Mask	255.255.255.0
Gateway IP Address	192.168.1.1
DNS1	168.95.1.1
DNS2	

Basic Menu – LAN

Basic → LAN

The first step is to configure the LAN settings. These options in this step display the current IP address and DHCP service of the storage server, and can be modified manually. When completed, click **Next**.

Basic → Global

This screen allows you to set up the Workgroup name for the storage server. You can also change the name and description of the storage server.

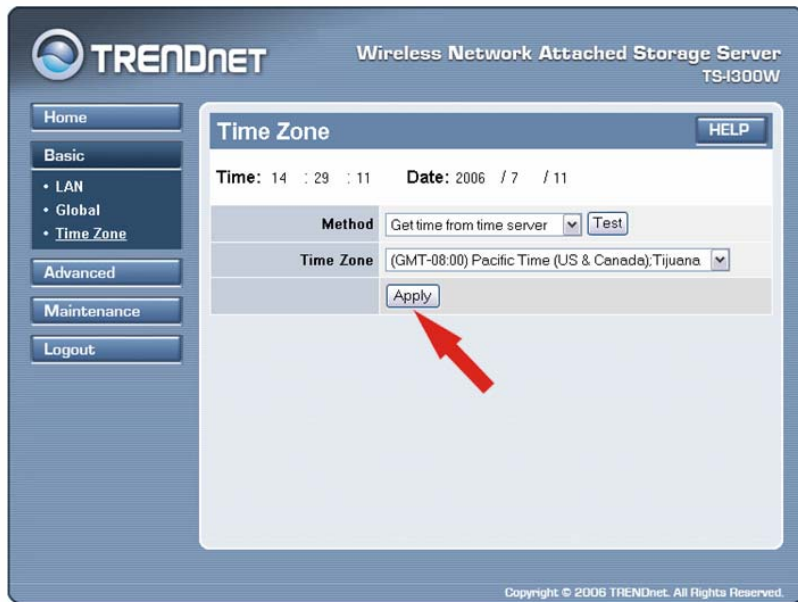
Global	
Work Group	workgroup
Server Name	TS-I300W
Server Description	Wireless Network Attached

Basic Menu – Global

When completed, click **Next**.

Basic → Time Zone

This screen displays the current time setting of the storage server. For system management purpose, a correct time setting is critical to have accurate time stamps on the system logs.



Basic Menu – Time Zone

The **Method** pull-down menu allows you to set up the correct time by getting time from the computer or time server (need an Internet connection). In the **Time Zone** pull-down menu, select a time zone according to your location.

When completed, click **Apply**.

Configuration - Advanced

The **Advanced** menu contains eleven submenus: *Account*, *Session*, *LAN*, *Wireless*, *Performance*, *FTP server*, *E-mail alerts*, *Disk utility*, *Time zone*, *UPnP AV*, and *Status*.

Advanced → Account

The **Account** submenu contains the options that allow you to add/delete users. Also, you can manage the users of the storage server.



Advanced Menu – Account

- **Add user:** You can add up to **50** users of the storage server by entering a name in the User name box, and the corresponding password in the Password box. When completed, click **Apply** to activate the user's account.

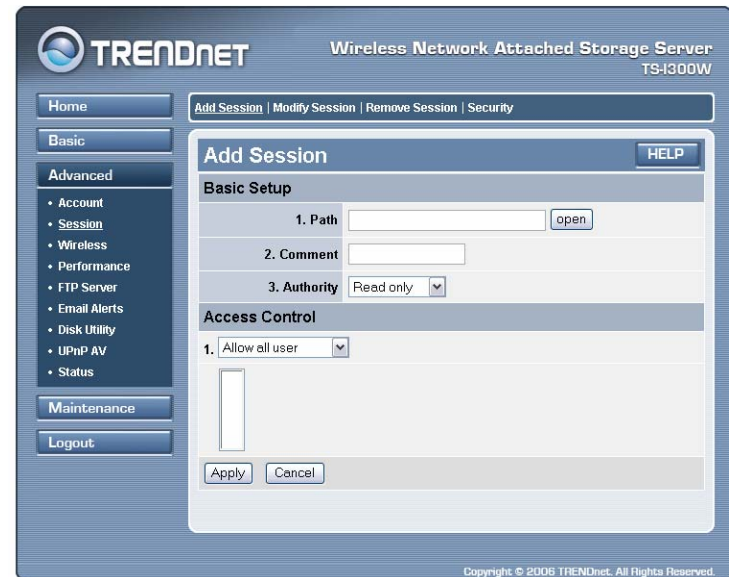
- **Remove user:** You can delete an existing user's account in this option. Check the box associated to the user you want to delete and click **Apply**.
- **Modify user:** You can change the password of an existing user's account. Select the radio button associated to the user you want to modify and click **Apply**. Enter the original password in the Old password box, and then enter a new password twice in the New password and Retype new password boxes. When completed, click **Apply**.
- **User list:** Click this item to display the existing users of the storage server.

NOTE:

1. The storage server uses four pre-defined accounts in the firmware, which cannot be used as the users' account names, including: **root**, **admin**, **ftp**, and **nobody**.
2. The password must be longer than five characters.

Advanced → Session

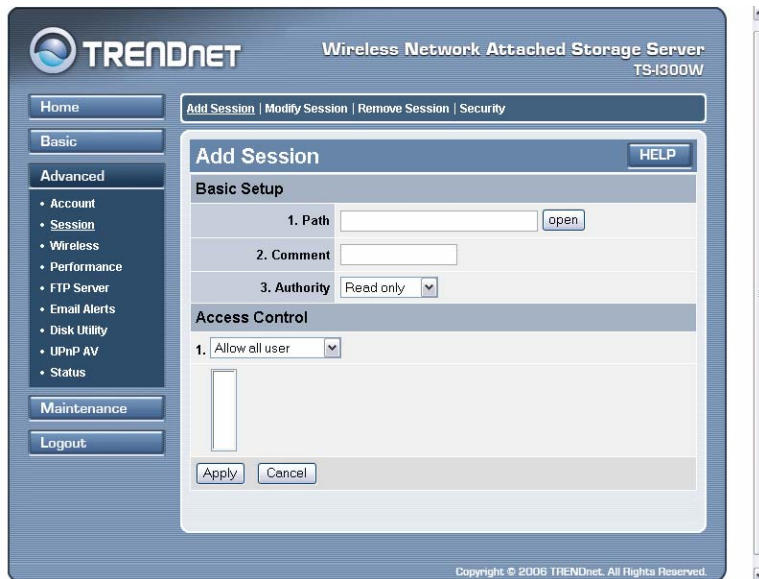
The **Session** submenu allows you to set up the Workgroup name for the storage server, and change the name and description of the storage server. You can also manage the session in this submenu.



Advanced Menu – Session

- **Add Session:** You can add the tasks in these relative options (see the illustration on page 31).
 - **Basic Setup:** Click **Open** to assign a destination folder in the **Path** option; you can give a brief instruction in the **Comment** box; finally, select the **Authority** type.
 - **Access Control:** You can allow all users or assign the specific user to control the storage server.

- **Modify Session:** You can modify the tasks by selecting the corresponding radio button and click **Apply** (see the illustration on page 32).
- **Remove Session:** You can remove the tasks by selecting the corresponding check box and click **Apply** (see the illustration on page 32).
- **Security:** You can configure the security function by selecting **NO**, **Allow IP**, and **Deny IP** from the **Filter Action** pull-down menu (see the illustration on page 33).



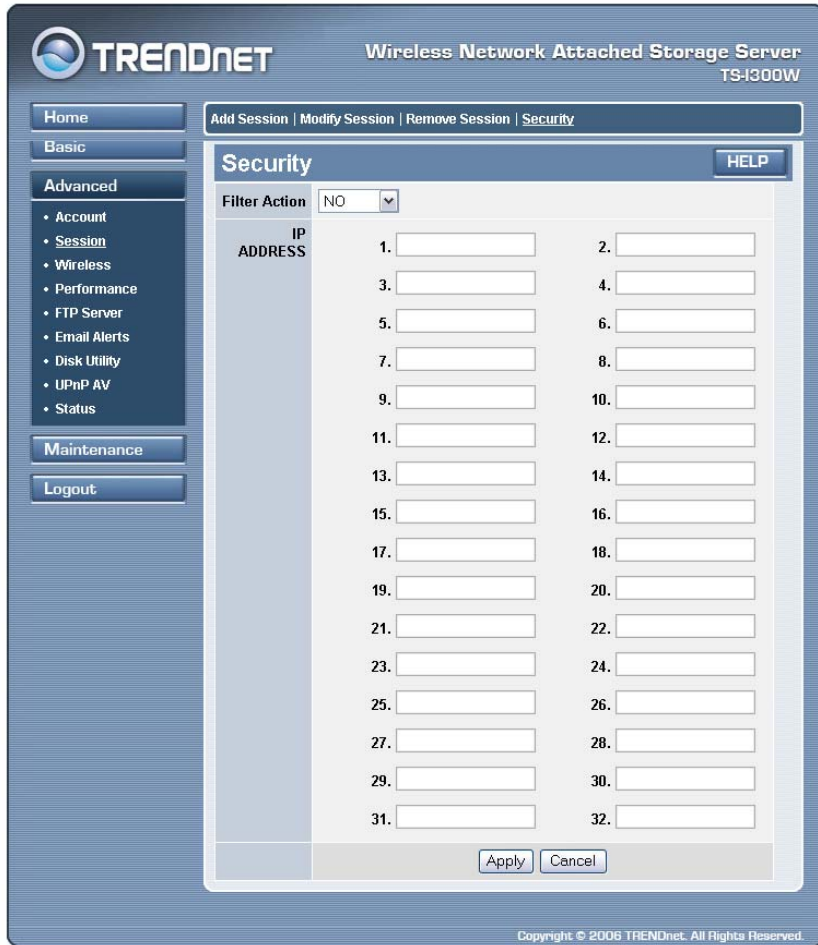
Add Session settings



Modify Session settings



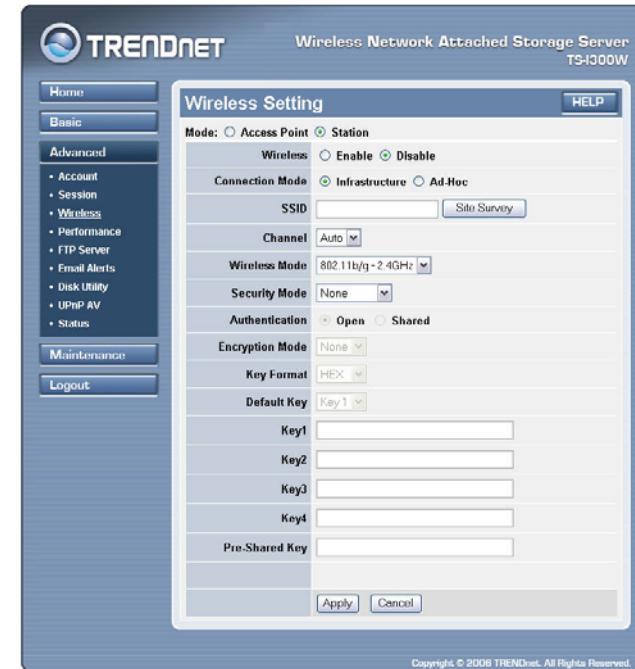
Remove Session settings



Security settings

Advanced → Wireless (For Wireless Model)

The *Wireless* submenu appears only in wireless model. If you use a wireless-enabled storage server, you can configure the respective settings in this submenu.

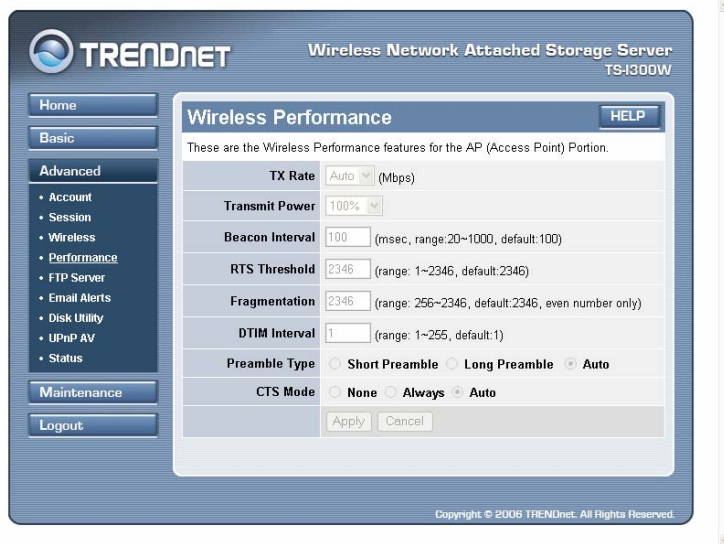


Advanced Menu –Wireless

- **Wireless Setting:** In this field, set up the respective settings according to your wireless network environment, the options includes: Access Point or Station mode, Enable/Disable wireless function, SSID, Channel, Enable/Disable 802.11g Only Mode, Enable/Disable SSID Broadcast, Security, Authentication (Open or Shared), Encryption Mode, Key Format, and Default Key.

Advanced → Performance

The *Performance* submenu contains the options that allow you to adjust the wireless performance by configure the related settings for the Access Point, including **TX Rate**, **Transmit Power**, **Beacon Interval**, **RTS Threshold**, **Fragmentation**, **DTIM Interval**, **Preamble Type**, and **CTS Mode**.



Advanced Menu – Performance

You are recommended to keep the system default settings in this field. If you have to adjust the wireless performance, please contact your network administrator.

Advanced → FTP Server

The *FTP server* submenu contains the options that allow you to enable/disable the FTP service of the storage server, as well as the relative FTP settings.



Advanced Menu – FTP Server

- **Setting:** This option contains the relative FTP server settings.
 - **User:** Select a user from the drop-down menu or check All Accounts.
 - **Path:** Click Open and select the destination folder from the internal/USB drive for FTP server.
 - **Root:** Check the Root box to select the root level of all the drives at once.
 - **Authority:** Select Read Only or Read/Write from the drop-down menu.
 - **Add:** Click Add to save your share/permissions.
 - **Max user:** Select the maximum number of users allowed to connect via FTP at one time from the drop-down menu.
 - **Idle time:** Select the idle time (1-10 minutes). Users will be disconnected when idle for the specified amount of time.
 - **Port:** You may change the port used for FTP. The default port is 21.
 - **Flow control:** Choose Unlimited or enter a data rate (x10 KB) for restricted data flow. This setting is only necessary where network traffic is significant and can be affected by FTP server activity.
- **FTP Server Status:** Displays the current information regarding the FTP

Advanced → E-mail Alerts

The *E-mail alerts* submenu contains the options that allow you to receive the e-mail messages from the system.

Advanced Menu – E-mail alerts

You have to set up the e-mail account by entering the required information in the boxes of the **Email Notification Settings** field. You can click Test E-mail to test your e-mail account.

Then, you can choose one event for receiving the notification, such as **Space Status**, **Disk Full**, **Critical Error**, **Administrator Password Changed**, **Firmware Upgraded**. In addition, you can setup the **Internal HDD Temperature** to protect your HDD.

Advanced → Disk Utility

The *Disk utility* submenu contains the options that allow you to format and scan the HDD.



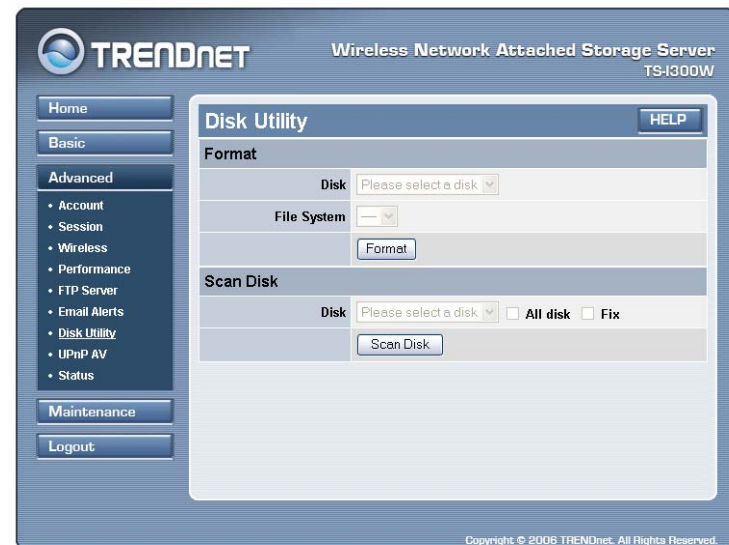
Advanced Menu – Disk utility

To format the HDD, select the desired disk first, and select one file system (**EXT3/EXT2/FAT/FAT32 for external USB drive, EXT2 for embedded IDE HDD**) from the pull-down list. Then, click Format.

To scan the HDD, select the desired disk first, and select to scan **All disk** or **Fix**. Then, click Scan Disk.

Advanced → Time Zone

The *Time zone* submenu displays the current time setting of the storage server. For system management purpose, a correct time setting is critical to have accurate time stamps on the system logs.

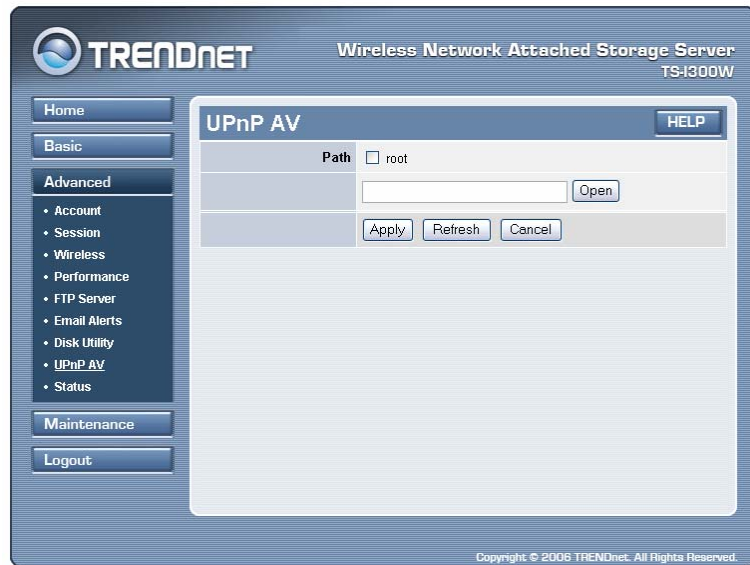


Advanced Menu – Time zone

The **Method** pull-down menu allows you to set up the correct time by getting time from the computer or time server (need an Internet connection). In the **Time Zone** pull-down menu, select a time zone according to your location.

Advanced → UPnP AV

The *UPnP AV* submenu allows you to assign the destination folder on the storage server to store/play the captured images from the external video player.

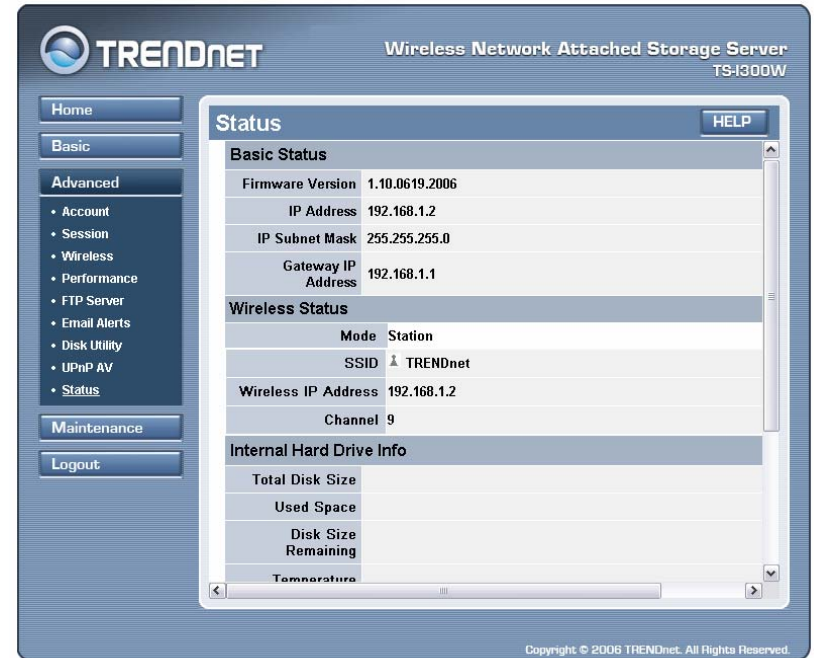


Advanced Menu – UPnP AV

Click the **Open** button to configure the destination folder on your storage server. When completed, click **Apply**.

Advanced → Status

The *Status* submenu contains information of the storage server, including its basic status and the Samba server status.



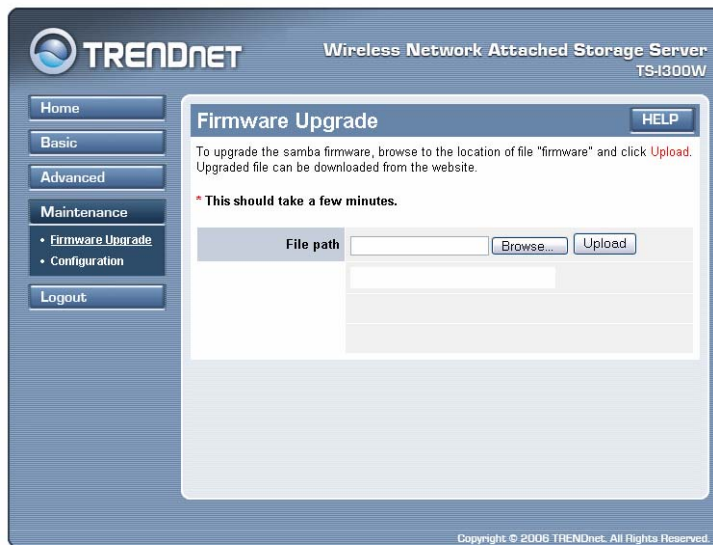
Advanced Menu – Status

Configuration - Maintenance

The **Maintenance** menu contains two submenus: *Firmware upload* and *Configuration*.

Maintenance → Firmware Upload

The *Firmware upload* submenu allows you to update the firmware of your storage server once you obtained a latest version of firmware. Click **Browse** to point to the firmware file, and then click **Upload**.



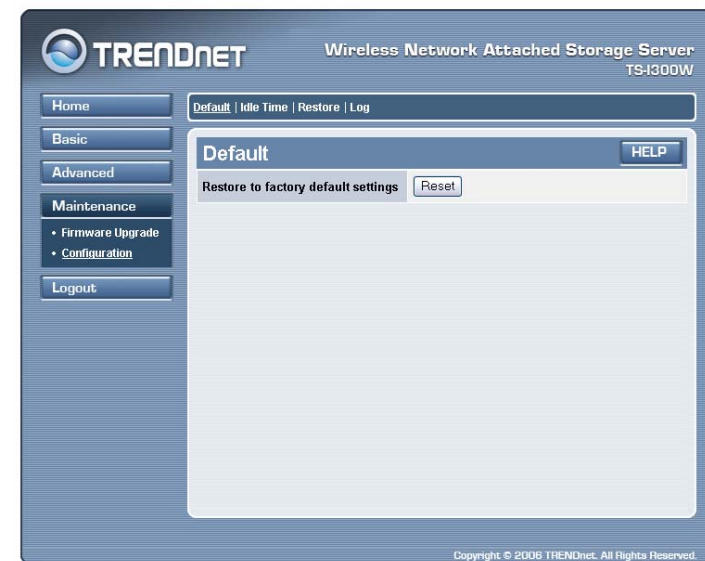
Maintenance Menu – Firmware Upload

NOTE: There is some risk when you are upgrading firmware, such

as power failure. Always confirm that the storage server is powered on during the procedure.

Maintenance → Configuration

The *Configuration* submenu allows you to reload the factory default settings of the storage server. Also, you can set up the Idle time in this submenu.



Maintenance Menu – Configuration

- **Default:** Clicking **Reset** allows you to resume the factory default settings of the storage server. This function is the same as pressing the **Reset** button on the machine.
- **Idle time:** If the user does nothing within the specified time in this option, then, the system would automatically logout. The idle time must be larger than **0**.

- **Restore:** You can restore the saved configuration of the storage server.
- **Log:** You can view the System Log or E-mail Log.

Configuration - Logout

Click **Logout** to exit the web configuration utility, and it will return to the login screen of the utility.



You can re-login using the **admin** User name. Alternately, if you set up a new user for the storage server, you can login the utility using the given user account.

DOWN LOADING FILES

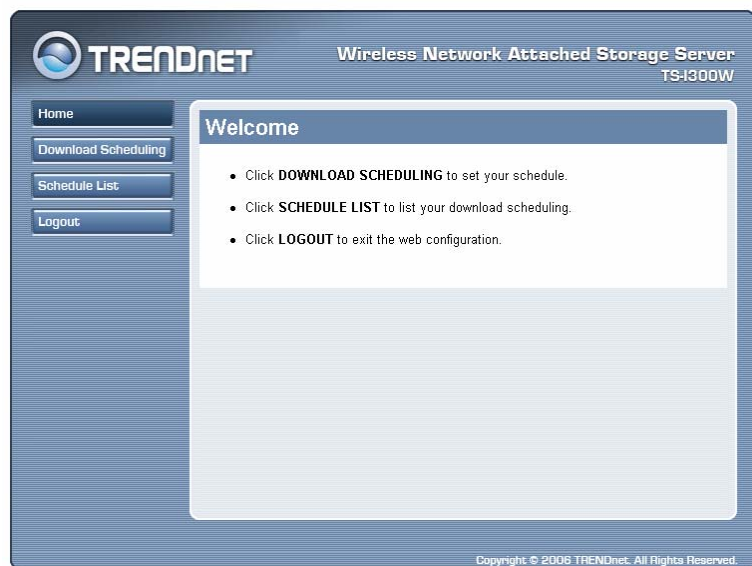
Entering Download Page

1. If you are in the configuration mode, click **Logout** to exit the web configuration utility, and re-login the utility's download page by clicking the Download Schedule button on the login dialog box.



NOTE: If the administrator has added users of the storage server, the users can login the Download page with their user name and password.

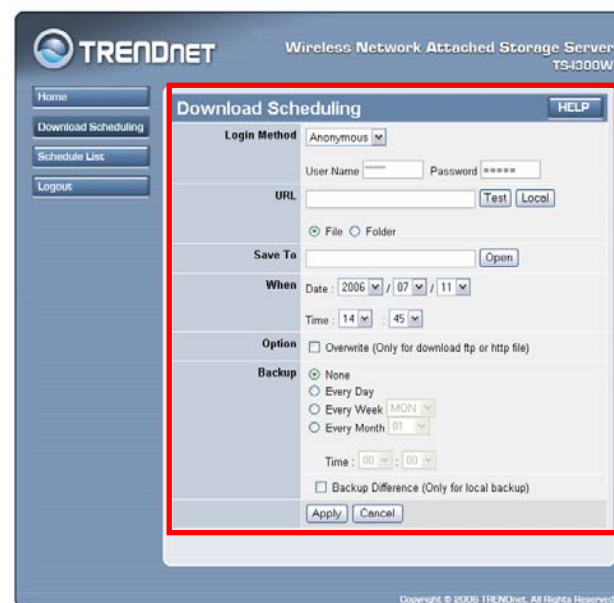
2. The Main menu of Download page will display as below.



- **Home** – main screen of the download page, providing the brief instructions of the buttons on menu bar.
- **Download Scheduling** – clicks to set up your download schedule.
- **Schedule List** – contains the information of scheduled download tasks.
- **Logout** – clicks to exit the download page.

Download Scheduling

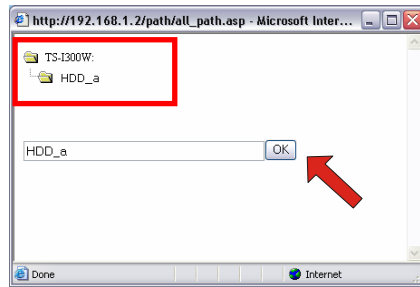
Click the **Download Scheduling** menu to set up your download tasks. Enter the required information in the relative fields.



Setup Screen of Download Scheduling

- **Login Method:** According to the settings of target server, choose **Anonymous** or **Account** from pull-down menu. When you choose **Account**, you have to enter the correct User name and Password.
- **URL:** Enter the URL address of target server. Click test to test the connection.

- **Save to:** Click **open** to bring up the following window that allows you to assign the destination folder to save the downloaded files. When completed, click **OK**.

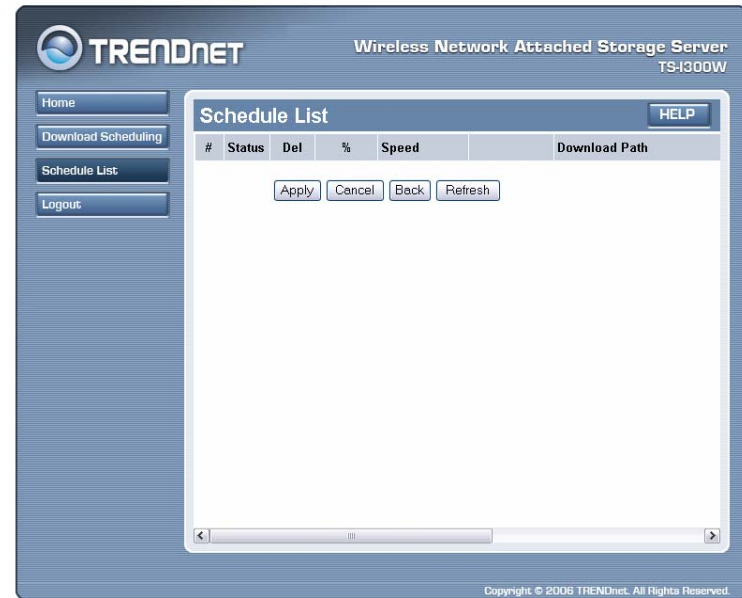


- **When:** You have to set up the start-up time to download files from the pull-down menu of the **Date** and **Time** options.
- **Option:** When the downloaded files have the same filename as the files in the destination folder, checking the **Overwrite** option will overwrite the old file in the folder.
- **Backup:** You can enable/disable the backup function of your storage server by selecting **None/Every Day/Every Week/Every Month**. Or, you can setup the function to backup the different file only when local backup.

When completed, click **Apply** to save this download task to the Schedule List.

Schedule List

Click the **Schedule List** menu to display the scheduled download tasks as below.



Scheduled Download Tasks

You can edit, delete and view these download tasks from the list. When you change the settings of selected task, click **Apply** to save the configuration. Click **Refresh** to reload the status of these tasks.

Logout

Click **Logout** to exit the download page, and it will return to the login screen of the utility.



The screenshot shows a login window titled "Network Attached Storage Server". Inside the window, there is a blue header that says "Please enter User name and Password". Below this, there are two input fields: "User name" and "Password". At the bottom of the window, there are three buttons: "Download Schedule", "Config", and "Cancel".

NOTE: If you are denied to enter the Configuration Utility or Download page, the following warning message will appear on the screen. Please try to enter the correct username and password again, or contact your network administrator.



The screenshot shows a warning window titled "Network Attached Storage Server". The window has a blue header that says "Unable to Login". Below the header, there are two numbered instructions: "1. Please contact your network administrator." and "2. You may have entered an incorrect user name or password. Please login again." The word "login" in the second instruction is a blue hyperlink.

PRODUCT SPECIFICATION

Standards

- Network Standards: IEEE 802.3, IEEE 802.3u
- Wireless LAN Standard: IEEE 802.11b/g
- UPnP (for Windows XP)
- WiFi certified for 11 Mbps and 54 Mbps transfer standards.

Connecting Ports

- One 10/100M RJ-45 connector (with AutoMDIX)
- Two USB 2.0 ports (support USB 2.0 and USB 1.1)
- One Power jack

Buttons

- One Power button
- One Unmount button
- One Reset button

LEDs

- Power (**Green**)
- LAN (**Green**)
- HDD (**Green**)
- HDD Full (**Orange**)
- USB (**Green/Orange**)
- WLAN (**Green**)

Management

- Web-based administrative program

Operating System Support

- Windows 98/ME, Windows NT, Windows 2000/XP
- Mac OS X
- Linux SMB

Environmental and Physical

- Power Supply: 12VDC, 3.0 Amp
- Operating Temperature: 5 ~ 40°C
- Storage Temperature: -20 ~ 50°C
- Humidity: 5 ~ 90%, non-condensing: 5 ~ 95% Operating

EMI Compliance

- EMC
 - FCC (America)
 - CE (Europe)
 - IC (Canada)
 - C-tick (Australia)
- Safety
 - LVD

Limited Warranty

TRENDnet warrants its products against defects in material and workmanship, under normal use and service, for the following lengths of time from the date of purchase.

TS-I300 / TS-I300W

2 Years

If a product does not operate as warranted above during the applicable warranty period, TRENDnet shall, at its option and expense, repair the defective product or deliver to customer an equivalent product to replace the defective item. All products that are replaced will become the property of TRENDnet. Replacement products may be new or reconditioned.

TRENDnet shall not be responsible for any software, firmware, information, or memory data of customer contained in, stored on, or integrated with any products returned to TRENDnet pursuant to any warranty.

There are no user serviceable parts inside the product. Do not remove or attempt to service the product through any unauthorized service center. This warranty is voided if (i) the product has been modified or repaired by any unauthorized service center, (ii) the product was subject to accident, abuse, or improper use (iii) the product was subject to conditions more severe than those specified in the manual.

Warranty service may be obtained by contacting TRENDnet office within the applicable warranty period for a Return Material Authorization (RMA) number, accompanied by a copy of the dated proof of the purchase. Products returned to TRENDnet must be pre-authorized by TRENDnet with RMA number marked on the outside of the package, and sent prepaid, insured and packaged appropriately for safe shipment.

WARRANTIES EXCLUSIVE: IF THE TRENDNET PRODUCT DOES NOT OPERATE AS WARRANTED ABOVE, THE CUSTOMER'S SOLE REMEDY SHALL BE, AT TRENDNET'S OPTION, REPAIR OR REPLACEMENT. THE FOREGOING WARRANTIES AND REMEDIES ARE EXCLUSIVE AND ARE IN LIEU OF ALL OTHER WARRANTIES, EXPRESSED OR IMPLIED, EITHER IN FACT OR BY OPERATION OF LAW, STATUTORY OR OTHERWISE, INCLUDING WARRANTIES OF MERCHANTABILITY AND FITNESS FOR A PARTICULAR PURPOSE. TRENDNET NEITHER ASSUMES NOR AUTHORIZES ANY OTHER PERSON TO ASSUME FOR IT ANY OTHER LIABILITY IN CONNECTION WITH THE SALE, INSTALLATION, MAINTENANCE OR USE OF TRENDNET'S PRODUCTS.

TRENDNET SHALL NOT BE LIABLE UNDER THIS WARRANTY IF ITS TESTING AND EXAMINATION DISCLOSE THAT THE ALLEGED DEFECT IN THE PRODUCT DOES NOT EXIST OR WAS CAUSED BY CUSTOMER'S OR ANY THIRD PERSON'S MISUSE, NEGLIGENCE, IMPROPER INSTALLATION OR TESTING, UNAUTHORIZED ATTEMPTS TO REPAIR OR MODIFY, OR ANY OTHER CAUSE BEYOND THE RANGE OF THE INTENDED USE, OR BY ACCIDENT, FIRE, LIGHTNING, OR OTHER HAZARD.

LIMITATION OF LIABILITY: TO THE FULL EXTENT ALLOWED BY LAW TRENDNET ALSO EXCLUDES FOR ITSELF AND ITS SUPPLIERS ANY LIABILITY, WHETHER BASED IN CONTRACT OR TORT (INCLUDING NEGLIGENCE), FOR INCIDENTAL, CONSEQUENTIAL, INDIRECT, SPECIAL, OR PUNITIVE DAMAGES OF ANY KIND, OR FOR LOSS OF REVENUE OR PROFITS, LOSS OF BUSINESS, LOSS OF INFORMATION OR DATA, OR OTHER FINANCIAL LOSS ARISING OUT OF OR IN CONNECTION WITH THE SALE, INSTALLATION, MAINTENANCE, USE, PERFORMANCE, FAILURE,

OR INTERRUPTION OF THE POSSIBILITY OF SUCH DAMAGES, AND LIMITS ITS LIABILITY TO REPAIR, REPLACEMENT, OR REFUND OF THE PURCHASE PRICE PAID, AT TRENDNET'S OPTION. THIS DISCLAIMER OF LIABILITY FOR DAMAGES WILL NOT BE AFFECTED IF ANY REMEDY PROVIDED HEREIN SHALL FAIL OF ITS ESSENTIAL PURPOSE.

Governing Law: This Limited Warranty shall be governed by the laws of the state of California.
Note: AC/DC Power Adapter, Cooling Fan, and Power Supply carry 1-Year Warranty



TRENDnet Technical Support

US • Canada

Toll Free Telephone: 1(866) 845-3673

24/7 Tech Support



Europe (Germany • France • Italy • Spain • Switzerland • UK)

Toll Free Telephone: +00800 60 76 76 67

English/Espanol - 24/7

Francais/Deutsch - 11am-8pm, Monday - Friday MET

Worldwide

Telephone: +{31} (0) 20 504 05 35

English/Espanol - 24/7

Francais/Deutsch - 11am-8pm, Monday - Friday MET

Product Warranty Registration

Please take a moment to register your product online.

Go to TRENDnet's website at <http://www.trendnet.com>

TRENDnet

3135 Kashiwa Street

Torrance, CA 90505

USA