





Quick Installation Guide  

TPL-402E
TPL-402E2K
1.01

Table of Contents

English	1
1. Before You Start	1
2. How to Install	2
3. LEDs and Buttons	5
.....	
Troubleshooting	6



Package Contents

- TPL-402E/TPL-402E2K
- CD-ROM (Utility and User's Guide)
- Multi-Language Quick Installation Guide
- Network Cable (1.5m/5ft)

System Requirements

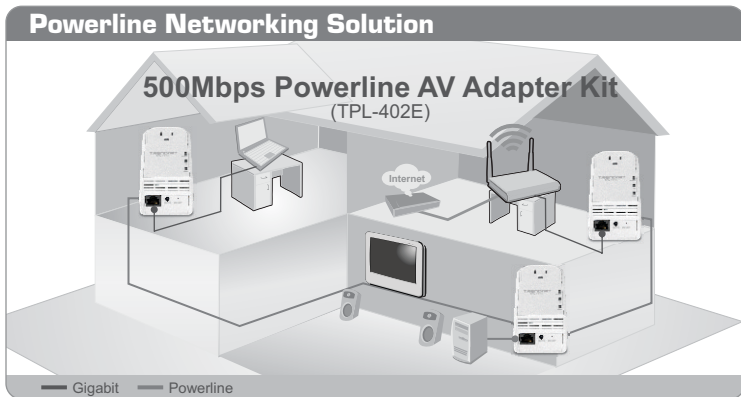
- CD-ROM drive
- A Desktop or Laptop PC with Network Adapter Installed
- Existing 10/100/1000Mbps wired network when TPL-402E is used as a bridge device
- Additional HomePlug[®] AV or IEEE 1901 compliant powerline adapter (e.g. TRENDnet TPL-303E, TPL-304E, TPL-305E, TPL-310AP, TPL-401E or another TPL-402E) (Note: This requirement is for the TPL-402E only. The TPL-402E2K already includes two TPL-402E adapters)

Software Utility Requirements

Supported Operating Systems	CPU	Memory
Windows 7 (32/64-bit)	1GHz or above	1GB RAM or above
Windows Vista (32/64-bit)	800MHz or above	512MB RAM or above
Windows XP (32/64-bit)	300MHz or above	256MB RAM or above

Note:

The configuration utility will allow you to add security to your powerline network by providing you with the ability to change the default network name and create your own personal network name for your powerline network. The utility can also help you troubleshoot connectivity between powerline adapters by verifying the network name. Please refer to the User's Guide on the TPL-402E/TPL-402E2K CD-ROM for instructions on installing and using the utility.



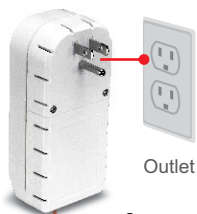
The example diagram shows a typical powerline network configuration in a home environment with 3 powerline adapters installed in different rooms. The orange line represents the powerline connectivity established through your home's electrical system and the blue lines represent Cat. 5, 5e, 6 Ethernet connectivity to your network enabled appliances such as a computer, router, or IP set top box connected to your television.

Note:

1. DO NOT install the TPL-402E until instructed to do so.
2. DO NOT plug the TPL-402E into a surge protector or power strip.
3. Avoid connecting the TPL-402E into an outlet that has appliances (e.g. refrigerators, washer and dryer) plugged in.
4. In order for the TPL-402E adapters to link to each other, each unit must be on the same electrical system.
5. It is not recommended to use this product on electrical systems that use AFCI circuit breakers or plugged into GFI protected outlets as this may cause performance degradation or loss in connectivity.
6. A maximum of 16 TPL-402E can be networked
7. Assuming that the TPL-402E adapters are configured with the default settings, to create a powerline network, simply connect all TPL-402E adapters to wall outlets that are on the same electrical system. No additional configuration in the utility is necessary.
8. The network name must be the same on all powerline adapters in order to establish connectivity. If the network name is not the same on all powerline adapters, the adapters will NOT establish connectivity. The default network name for the TPL-402E is "HomePlugAV".

Below is an example showing how to create a Powerline network using the TPL-402E/TPL-402E2K and your existing router to share Internet.

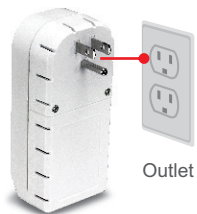
1. Plug a TPL-402E into an available power outlet. This TPL-402E should be located within the reach of the router's network cable.



2. Connect a network cable from the TPL-402E to an available LAN network port on your router (e.g. TEW-673GRU).



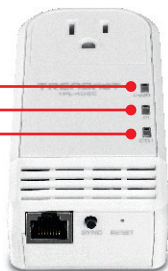
3. Plug a second TPL-402E into an available power outlet where your remote computer or network appliances (e.g. Game Console, IP Set box, network enabled TV, etc.) are located.



4. Connect a network cable from the second TPL-402E's network port into the network port on your remote computer or network appliance (e.g. Game Console, Blu-ray player, IP set top box, network enabled TV, etc.).



5. Verify that the PWR (Power), PL (Powerline) and ETH (Ethernet Link/Act) LEDs are on for both TPL-402E adapters.



Your installation is now complete

For detailed information regarding the the **TPL-402E/TPL-402E2K**, configuration and advanced settings, please refer to the Troubleshooting section, User's Guide on the Utility CD-ROM, or TRENDnet's website at <http://www.trendnet.com>.

Register Your Product

To ensure the highest level of customer service and support, please take a moment to register your product Online at: www.trendnet.com/register

Thank you for choosing TRENDnet

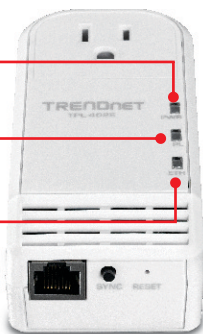
3. LEDs and Buttons

ENGLISH

PWR (Power)

PL (Powerline)

ETH (Gigabit Ethernet Link/Act)



FRANÇAIS

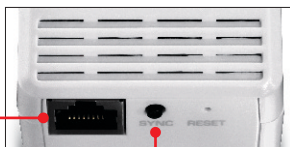
DEUTSCH

The Gigabit Ethernet/Network Port and Reset button are located at the bottom of the device.

Reset Button



Gigabit + Ethernet / Network Port



Sync

ESPAÑOL

РУССКИЙ

Note:

1. Please refer to the User's Guide on the TPL-402E/TPL-402E2K's User's Guide CD for detailed explanations of each LED and button.
2. The following factors may affect the powerline network's connection quality:
 - a. Noise – Generated by appliances that are connected to your electrical system through power outlets that have high power consumption requirements. (e.g. Microwaves, ovens, blow dryer, iron, dishwasher, etc.) The quality of your household electrical wiring may also cause additional noise on your electrical system.
 - b. Distance – Long lengths of electrical wiring through your electrical system between connected powerline adapters.

1. I have verified that my Powerline device is connected to my workstation, but I cannot detect other Powerline devices. What should I do?

1. Verify that you are using Cat. 5, Cat. 5e or Cat. 6 Ethernet network cables for each TPL-402E adapter.
2. Verify that the power outlet of the TPL-402E/TPL-402E2K is plugged into is on the same electrical power distribution and/or circuit breaker box.
3. If you are still not able to establish connectivity after performing the above steps, please reset both of the TPL-402E adapters to factory default. The default network name/key is "HomePlugAV". The Reset button is located on the bottom of the TPL-402E.
 1. With a pin or paperclip, press and hold the reset button for 1 second and release it. The LEDs will turn off and turn back on.
 2. To verify connectivity, the Powerline LED will become solid when the powerline adapters establish connectivity. The TPL-402E powerline adapters must have the same network name/key in order to connect to each other.

Note: If you have problems resetting the device, unplug the powerline adapter(s) from the power outlet, wait 15 seconds and plug the adapter(s) back into the outlet, then repeat the reset procedure.

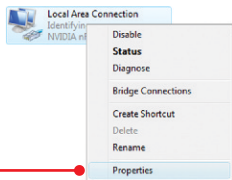
2. I can detect my Powerline devices on my Powerline network, but I cannot connect to the Internet. What should I do?

Assuming that the Powerline network is connected to a router:

1. Make sure you are not connecting the device into a surge protector or power strip.
2. Make sure that your Router is connected to the Internet and one of the Router's LAN ports is connected to the TPL-402E's network port. Check both TPL-402E and the router's network port LED for positive connection status.
3. Make sure your computer's TCP/IP settings are set to Obtain an IP address automatically (see the steps below).

Windows 7

1. Go into the **Control Panel**, click **Network and Internet**, click **Network and Sharing Center**, click **Change Adapter Settings** and then right-click the **Local Area Connection** icon and then click **Properties**.



2. Click **Internet Protocol Version 4(TCP/IPv4)**

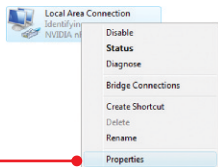
and then click **Properties**. Then click on

Obtain an IP address automatically.

2. Click **Internet Protocol Version 4(TCP/IPv4)** and then click **Properties**. Then click on **Obtain an IP address automatically**.

Windows Vista

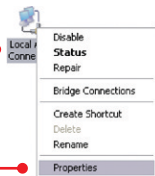
1. Go into the **Control Panel**, click **Network and Internet**, click **Network and Sharing Center**, click **Manage Network Connections** and then right-click the **Local Area Connection** icon and then click **Properties**.



2. Click **Internet Protocol Version 4(TCP/IPv4)** and then click **Properties**. Then click on **Obtain an IP address automatically**.

Windows XP/2000

1. Go into the **Control Panel**, double-click the **Network Connections** icon and then right-click the **Local Area Connection** icon and then click **Properties**.



2. Click **Internet Protocol (TCP/IP)** and then click **Properties**. Then click on **Obtain an IP address automatically**.

4. I have a HomePlug 1.0 or HomePlug Turbo network. Can I use this with my network?

The TPL-402E is not backwards compatible with HomePlug 1.0 or HomePlug Turbo.

5. Do I need to reconfigure my TPL-402E after I hit the reset button?

No, the TPL-402E should automatically establish connection once both units are reset to default settings.

If you still encounter problems or have any questions regarding the **TPL-402E/TPL-402E2K**, please refer to the User's Guide included on the Utility CD-ROM or contact TRENDnet's Technical Support Department.

Declaration of Conformity



Company Information:

Company Name:
TRENDnet, Inc.

Company Address:
20675 Manhattan Place
Torrance, CA 90501
USA

Product Information:

Product Description:
500Mbps Powerline AV Adapter with Bonus Outlet

Model Number:
TPL-402E

Brand name:
TRENDnet



Technical Standards:

EN 55022 : 2006 + A1 : 2007
EN 61000-3-2 : 2009
EN 61000-3-3 : 2008
EN 50412-2-1 : 2005
EN 60950-1 : 2006 + A11 : 2009

Declaration:

The product is herewith confirmed to comply with the requirements of Directive 2004/108/EC of the Council (European Parliament) on the EMC directive.

I hereby declare that the products and devices mentioned above are consistent with the standards and provisions of the guidelines.

Sonny Su

Full Name

March 15, 2011

Date

Director of Technology

Position / Title

Signature

Certifications

This equipment has been tested and found to comply with FCC and CE Rules.

Operation is subject to the following two conditions:

- (1) This device may not cause harmful interference.
- (2) This device must accept any interference received. Including interference that may cause undesired operation.



Waste electrical and electronic products must not be disposed of with household waste. Please recycle where facilities exist. Check with you Local Authority or Retailer for recycling advice.



NOTE: THE MANUFACTURER IS NOT RESPONSIBLE FOR ANY RADIO OR TV INTERFERENCE CAUSED BY UNAUTHORIZED MODIFICATIONS TO THIS EQUIPMENT. SUCH MODIFICATIONS COULD VOID THE USER'S AUTHORITY TO OPERATE THE EQUIPMENT.

ADVERTENCIA

En todos nuestros equipos se mencionan claramente las características del adaptador de alimentación necesario para su funcionamiento. El uso de un adaptador distinto al mencionado puede producir daños físicos y/o daños al equipo conectado. El adaptador de alimentación debe operar con voltaje y frecuencia de la energía eléctrica domiciliar existente en el país o zona de instalación.

Description of Modes

Erp (EuP) Operation: Standby Mode

The EUT has no external mechanical switch and uses an internal program to control active and standby modes.

Disconnect the Ethernet cables from the device Ethernet ports, and after 3 minutes, the device will enter standby mode. The Power (PWR) LED will flash every 15 seconds to indicate that the device is currently in standby mode. To return to active mode, reconnect the Ethernet cables to the device Ethernet ports, and the device will re-enter active mode.



Product Warranty Registration

Please take a moment to register your product online.
Go to TRENDnet's website at <http://www.trendnet.com/register>