



Quick Installation Guide



TPE-80WS

Table of Contents

English	1
1. Before You Start	1
2. Hardware Installation	2
3. Configuring the Power Over Ethernet (PoE) Switch	3
Troubleshooting	4

1. Before You Start



Package Contents

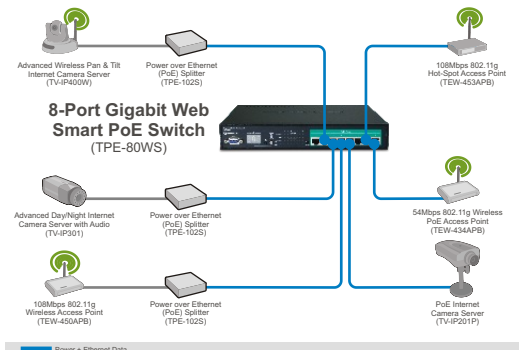
- TPE-80WS
- Quick Installation Guide
- User's Guide CD-ROM
- RS-232 Cable
- Power Cord
- Rack Mount Kit

System Requirements

- Web Browser: Internet Explorer (5.5 or higher) or Netscape Navigator (4.7 or higher).
- A computer with a network adapter properly installed.
- A RJ-45 network cable.
- EIA standard 19" rack (Optional)

Note: The TPE-80WS only support Power over Ethernet (PoE) devices that follow the IEEE 802.3af standard

Application



2. Hardware Installation

1. Connect the **Power Cord** to the rear of the TPE-80WS and then to a power outlet.



2. Connect a RJ-45 network cable from the computer to an available Ethernet port on the TPE-80WS.



3. Connect a RJ-45 cable from a PoE port on the TPE-80WS to the **LAN** Port of the PoE device (e.g. TEW-434APB)



4. Verify that the following panel lights are on: **POWER, OPERATING** and **LINK/ACT**



3. Configure the Power Over Ethernet (PoE) Switch

Note: It is recommended that you configure the PoE Switch from a wired computer. Before the PoE Switch can be configured, a Static IP address must be assigned to your computer's network adapter in the subnet of 192.168.223.x. Since the PoE Switch's default IP address is 192.168.223.100, make sure no other network devices are assigned an IP address of 192.168.223.100. (Refer to Troubleshooting section on how to configure TCP/IP settings on your PC.)

Web Browser

1. Open your web browser, type **<http://192.168.223.100>** in the Address bar, and then press **Enter**.

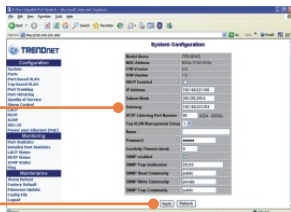


2. Enter the Password, and then click **Apply**. By default:
Password: **admin**

Please enter password to login

Password:

3. Click **Configuration** and then click **System**. Configure the IP Address, Subnet Mask and Gateway to match your network and then click **Apply**.



Your installation is now complete.

For detailed information regarding the **TPE-80WS's** configuration and advanced settings, please refer to the Troubleshooting section, User's Guide CD-ROM, or TRENDnet's website at <http://www.trendnet.com>

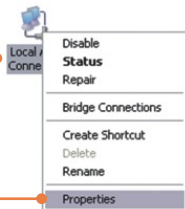
Register Your Product

To ensure the highest level of customer service and support, please take a moment to register your product Online at: www.trendnet.com/register

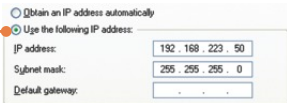
Thank you for choosing TRENDnet

Q1: How do I configure TCP/IP settings on my computer?

1. Go into the **Control Panel** and double-click the **Network Connections** icon, right-click the **Local Area Connection** icon and then click **Properties**.



2. Click **Internet Protocol (TCP/IP)** and then click **Properties**. Then click on **Use the following IP address**, and make sure you assign your network adapter an IP address in the subnet of 192.168.223.x.



Q2: I typed `http://192.168.223.100` in my Internet Browser's Address Bar, but an error message says "The page cannot be displayed." How can I get into the TPE-80WS's web configuration page?

A2: First, check your hardware settings again by following the instructions in section 2. Second, make sure the POWER and LINK/ACT lights are lit. Third, make sure the TCP/IP settings are configured properly (see Q1). Fourth, since the PoE Switch's default IP address is 192.168.223.100, make sure that no other network devices are assigned an IP address of 192.168.223.100.

Q3: If my network's IP is different than the PoE Switch's range, what should I do?

A3: You should still configure the PoE Switch first. After all the settings are applied, go to the PoE Switch's configuration page, click on IP settings and change the IP address of the PoE Switch to match your network's IP.

Q4: My 802.3af Powered device does not power on when I plug the device into the Switch. What should I do?

A4: First, verify that your PoE device supports IEEE 802.3af protocol. Second, verify that your PoE device powers up using its power adapter. Third, power cycle the PoE switch. Unplug power to the switch, wait 15 seconds, then plug the power back in. Fourth, plug the device into a different port on the PoE switch. Fifth, try using another Cat-5e cable.

Q5: I forgot the administration password. How do I reset my TPE-80WS?

A5: Press on the default button using a pen or paperclip for 10 seconds. The default password is admin.

Q6: What are the default port settings for configuring the Switch through the console port using HyperTerminal?

A6: Bits per Second: 115200; Data bits: 8; Parity: None; Stop bits: 1; Flow control: None; Emulation: VT100.

If you still encounter problems or have any questions regarding the TPE-80WS, please contact TRENDnet's Technical Support Department.

Certifications

This equipment has been tested and found to comply with FCC and CE Rules.

Operation is subject to the following two conditions:

- (1) This device may not cause harmful interference.
- (2) This device must accept any interference received. Including interference that may cause undesired operation.



Waste electrical and electronic products must not be disposed of with household waste. Please recycle where facilities exist. Check with you Local Authority or Retailer for recycling advice.



NOTE: THE MANUFACTURER IS NOT RESPONSIBLE FOR ANY RADIO OR TV INTERFERENCE CAUSED BY UNAUTHORIZED MODIFICATIONS TO THIS EQUIPMENT. SUCH MODIFICATIONS COULD VOID THE USER'S AUTHORITY TO OPERATE THE EQUIPMENT.

ADVERTENCIA

En todos nuestros equipos se mencionan claramente las características del adaptador de alimentación necesario para su funcionamiento. El uso de un adaptador distinto al mencionado puede producir daños físicos y/o daños al equipo conectado. El adaptador de alimentación debe operar con voltaje y frecuencia de la energía eléctrica domiciliar existente en el país o zona de instalación.



TRENDnet Technical Support

US • Canada

Toll Free Telephone: 1(866) 845-3673

24/7 Tech Support



Europe (Germany • France • Italy • Spain • Switzerland • UK)

Toll Free Telephone: +00800 60 76 76 67

English/Espanol - 24/7

Francais/Deutsch - 11am-8pm, Monday - Friday MET

Worldwide

Telephone: +(31) (0) 20 504 05 35

English/Espanol - 24/7

Francais/Deutsch - 11am-8pm, Monday - Friday MET

Product Warranty Registration

Please take a moment to register your product online.

Go to TRENDnet's website at <http://www.trendnet.com/register>

TRENDnet[®]
20675 Manhattan Place
Torrance, CA 90501
USA