



## Quick Installation Guide



**TPE-224WS**

# Table of Contents

English .....	1
1. Before You Start .....	1
2. Hardware Installation .....	2
3. Web Management Utility .....	3
Troubleshooting .....	6

# 1. Before You Start



## Package Contents

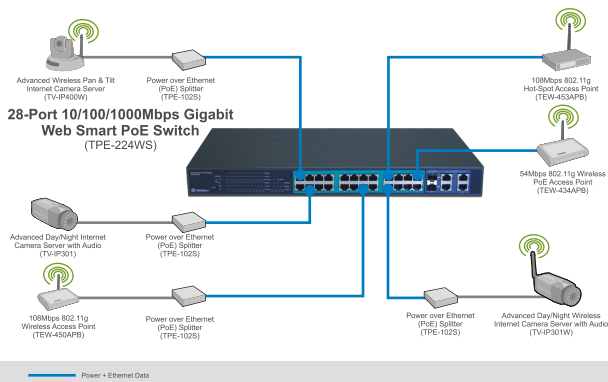
- TPE-224WS
- Quick Installation Guide
- Utility & User Guide CD-ROM
- 2 Mounting Brackets with Screw
- Power Cord

## System Requirements

- Web Browser: Internet Explorer (5.0 or above), Netscape (6.0 or above)
- Computer with Network adapter installed
- IEEE 802.3af Powered Device
- Mini-GBIC module (e.g. TEG-MGBSX, TEG-MGBS10, TEG-MGBS40, TEG-MGBS80, TEG-MGBS10D35, TEG-MGBS40D35) for Mini-GBIC slots

**Note:** The TPE-224WS only supports Powered Devices that follow the IEEE 802.3af Mode A (pin 1, 2, 3, 6) standard

## Application



## 2. Hardware Installation

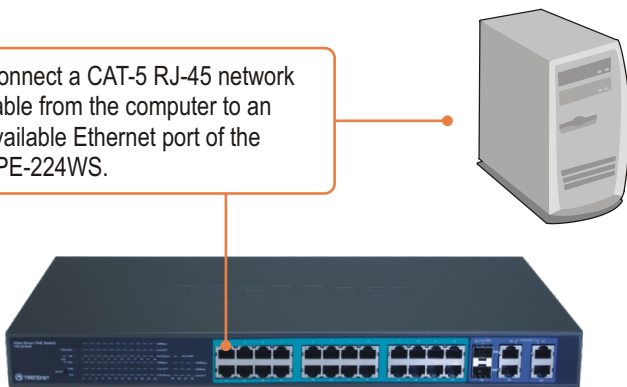
### Note:

1. After hardware installation is complete, use the Web Browser to configure the TPE-224WS. To access the Web Browser configuration, open your web browser, and enter the default IP Address <http://192.168.0.1> and default password "admin". Make sure your computer and the TPE-224WS are configured to the same network segment.
2. The Mini-GBIC slots are shared with port 25 and 26 Gigabit Ethernet ports. When the Mini-GBIC slots are in use, port 25 and 26 Gigabit Ethernet ports are disabled.
3. Mini-GBIC slots and Gigabit Ports (ports 25, 26, 27 and 28) are not Power over Ethernet ports.

1. Connect the **Power Cord** to the rear of the TPE-224WS and then to a power outlet.



2. Connect a CAT-5 RJ-45 network cable from the computer to an available Ethernet port of the TPE-224WS.



## 3. Web Management Utility

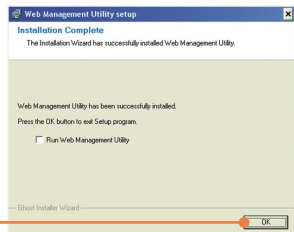
Note: If you would like to easily discover all the Web Management Switches on the network, assign IP Address, change the password, and upgrade to new firmware, please install the Web Management Utility. Follow the steps below.

### For Windows User

1. Insert the **Utility & User's Guide CD-ROM** into your computer's CD-ROM Drive and then click **Install Utility**.



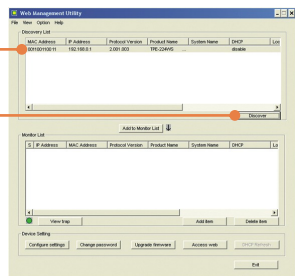
2. Follow the **Installation Wizard** instructions. Click **OK**.



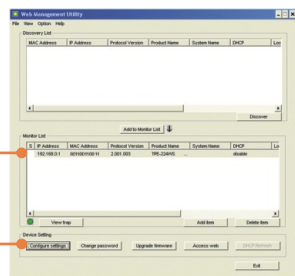
3. Click **Start > Programs > web\_management\_utility**, and then click **web\_management\_utility**.



4. Click **Discovery**, and then double-click the **Switch** that appears in the **Discovery List**.



5. Click the **Switch** in the **Monitor List** and then click **Configuration setting**.



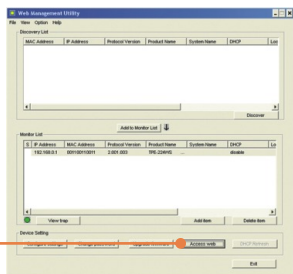
6. Configure the **IP Address**, **Subnet mask**, **Gateway**, and **Password**. Click **Set**.



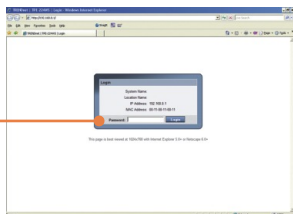
7. Click **OK**.



8. Click **Access Web**.



9. Type in your **Password** and then click **Login**. By default, the Password is **admin**.



For more information regarding the **Web-based Smart Utility** configuration and advanced settings, please refer to the User's Guide included on the Utility CD-ROM or TRENDnet's website at [www.trendnet.com](http://www.trendnet.com)

### Register Your Product

To ensure the highest level of customer service and support, please take a moment to register your product Online at: [www.TRENDnet.com/register](http://www.TRENDnet.com/register)

Thank you for choosing TRENDnet

**Q1: After connecting the TPE-224WS to a power outlet, the LEDs do not turn on.**

**A1:** Check the connection of the power cord to the TPE-224WS and the power outlet. Also check that the power outlet is receiving power.

**Q2: After installing the Web-Management Utility, I clicked Discovery and the Utility is unable to discover the TPE-224WS. What should I do?**

**A2:** Make sure that the TPE-224WS is powered on and that all connections are secure. Also check that your computer's IP Address is on the same network segment as the TPE-224WS. The default IP Address of the Switch is **192.168.0.1** and the default password is **admin**.

**Q3: When I access the TPE-224WS using a web browser, I get a screen that tells me "only one user can login". What should I do?**

**A3:** Another computer is configuring the TPE-224WS. Please wait until the user logs off. If the other user has already logged off and you still get the same screen, disconnect the power cord from the TPE-224WS, wait for 5 seconds, reconnect the power cord to the TPE-224WS, allow 5 seconds for the Switch to power on, and then attempt to access the web configuration page to login.

**Q4: I forgot the administration password. How do I reset my TPE-224WS?**

**A4:** Press on the reset button using a pen or paperclip for 10 seconds. The default password is **admin**.

**Q5: When I connect a computer to the Switch's Gigabit port, the LINK/ACT LED turns on, but the 1000Mbps LED remains off.**

**A5:** When the 1000Mbps LED remains off and the 100Mbps LED remains on, the computer's connection speed is 100Mbps. When the 1000Mbps and 100Mbps LED remains off, the computer's connection speed is 10Mbps. Please consult the User's Guide in the CD-ROM for more information.

**Q6: My 802.3af Powered Device does not power on when I plug the device into the Switch. What should I do?**

**A6:** First, verify that the PoE device supports IEEE 802.3af Mode A protocol. Second, power cycle the PoE switch. Unplug power to the Switch, wait 15 seconds, then plug the power back in. Third, plug the device into a different port on the PoE switch. Fourth, try using another RJ-45 network cable.

If you still encounter problems or have any questions regarding the TPE-224WS, please refer to the User's Guide included on the Utility CD-ROM or contact Trendnet's Technical Support Department.



## Certifications

This equipment has been tested and found to comply with FCC and CE Rules. Operation is subject to the following two conditions:

- (1) This device may not cause harmful interference.
- (2) This device must accept any interference received. Including interference that may cause undesired operation.



Waste electrical and electronic products must not be disposed of with household waste. Please recycle where facilities exist. Check with you Local Authority or Retailer for recycling advice.



**NOTE:** THE MANUFACTURER IS NOT RESPONSIBLE FOR ANY RADIO OR TV INTERFERENCE CAUSED BY UNAUTHORIZED MODIFICATIONS TO THIS EQUIPMENT. SUCH MODIFICATIONS COULD VOID THE USER'S AUTHORITY TO OPERATE THE EQUIPMENT.

### ADVERTENCIA

En todos nuestros equipos se mencionan claramente las características del adaptador de alimentación necesario para su funcionamiento. El uso de un adaptador distinto al mencionado puede producir daños físicos y/o daños al equipo conectado. El adaptador de alimentación debe operar con voltaje y frecuencia de la energía eléctrica domiciliar existente en el país o zona de instalación.



## TRENDnet Technical Support

### US • Canada

**Toll Free Telephone:** 1(866) 845-3673

24/7 Tech Support



### Europe (Germany • France • Italy • Spain • Switzerland • UK)

**Toll Free Telephone:** +00800 60 76 76 67

English/Espanol - 24/7

Francais/Deutsch - 11am-8pm, Monday - Friday MET

### Worldwide

**Telephone:** +(31) (0) 20 504 05 35

English/Espanol - 24/7

Francais/Deutsch - 11am-8pm, Monday - Friday MET

## Product Warranty Registration

Please take a moment to register your product online.

Go to TRENDnet's website at <http://www.trendnet.com>

**TRENDnet**<sup>®</sup>  
20675 Manhattan Place  
Torrance, CA 90501  
USA