



Quick Installation Guide



TPE-224WS

Table of Contents

Español	1
1. Antes de iniciar	1
2. Instalación del Hardware	2
3. Herramienta de gestión Web	3
Troubleshooting	6

1. Antes de iniciar



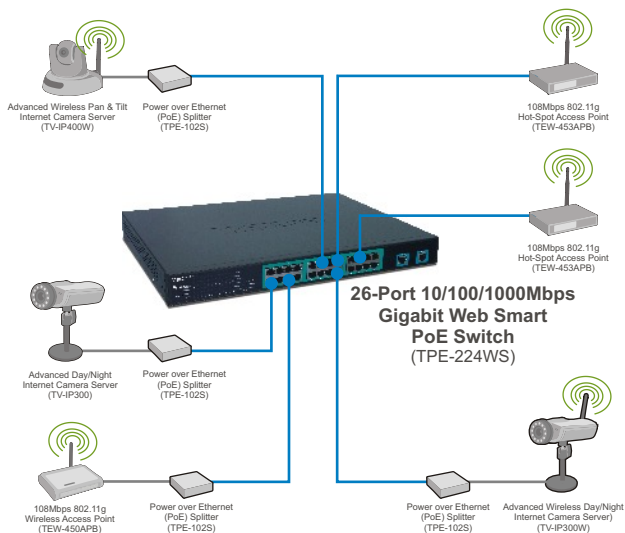
Contenidos del paquete

- TPE-224WS
- Guía de instalación rápida
- CD-ROM de la herramienta
- 2 abrazaderas para cable con tornillos
- Cable de alimentación AC

Requisitos del sistema

- Navegador Web: Internet Explorer (5.0 ó superior) o Netscape Navigator (6.0 ó superior)
- PC con adaptador de red instalado

Aplicación



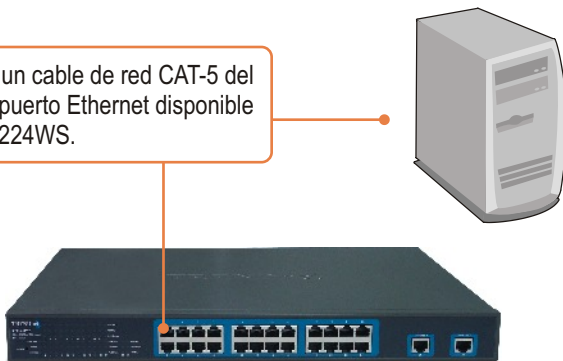
Power + Ethernet Data

2. Instalación del Hardware

1. Conecte el **Power Cord** (Cable de alimentación) en la parte trasera del TPE-224WS y después a la toma corriente.



2. Conecte un cable de red CAT-5 del PC a un puerto Ethernet disponible del TPE-224WS.



3. Herramienta de gestión Web

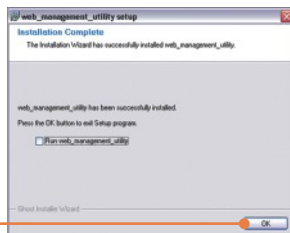
Nota: Si desea descubrir con facilidad todos los Enrutadores de Gestión Web en la red, asigne la dirección IP, cambie la contraseña, y actualice el nuevo firmware, después instale la Web Management Utility (Herramienta de gestión Web). Siga los pasos que aparecen a continuación.

Para usuarios de Windows

1. Introduzca el **CD-ROM del controlador y de la herramienta** en la unidad de CD-ROM de su PC y luego haga clic en **Install Utility** (Instalar herramienta).



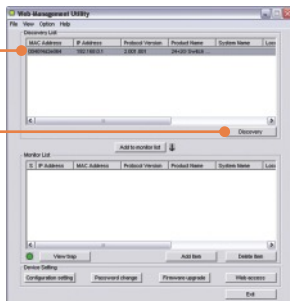
2. Siga las instrucciones del **Installation Wizard** (Asistente de instalación). Haga click **OK**.



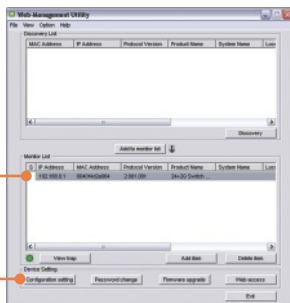
3. Haga clic en **Start** (Inicio), después en **Programs** (Programas), luego en web_management_utility (Herramienta de gestión Web) y después haga clic en **web_management_utility** (Herramienta de gestión Web).



4. Haga clic en **Discovery** (Descubrir) y después haga doble clic en el **Switch** (Enrutador) que aparece en la “**Discovery List**”.



5. Haga clic en el **Switch** (conmutador) que aparece en la **Monitor List** y después haga clic en **Configuration setting**.



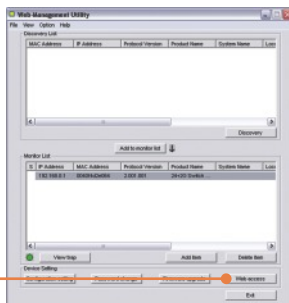
6. Establezca la configuración de la **IP Address** (Dirección IP), **Subnet mask** (Máscara de subred), **Gateway** y **Password** (Contraseña). Haga clic en **Set** (Establecer).



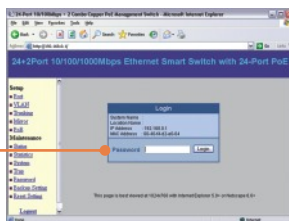
7. Haga clic en **OK**.



8. Haga clic en **Web access** (Acceso Web).



9. Escriba su **Password** (Contraseña) y después haga clic en **Login** (Iniciar).



Para obtener información más detallada sobre la configuración así como de las configuraciones avanzadas del TPE-224WS , por favor consulte la sección de resolución de problemas, el CD-ROM de la Guía del Usuario, o el sitio Web de Trendnet en <http://www.trendnet.com>.

Q1: After connecting the TPE-224WS to a power outlet, the LEDs do not turn on.

A1: Check the connection of the power cord to the TPE-224WS and the power outlet. Also check that the power outlet is receiving power.

Q2: After installing the Web-Management Utility, I clicked Discovery and the Utility is unable to discover the TPE-224WS. What should I do?

A2: Make sure that the TPE-224WS is powered on and that all connections are secure. Also check that your computer's IP Address is on the same network segment as the TPE-224WS. The default IP Address of the TPE-224WS is <http://192.168.0.1> and the default password is "admin".

Q3: When I access the TPE-224WS using a web browser, I get a screen that tells me "only one user can login". What should I do?

A3: Another computer is configuring the TPE-224WS. Please wait until the user logs off. If the other user has already logged off and you still get the same screen, then disconnect the power cord from the TPE-224WS, wait for 5 seconds, reconnect the power cord to the TPE-224WS, allow 5 seconds for the switch to power on, and then attempt to access the web configuration page to login.

Q4: When I connect a computer to the switch's port, the LINK/ACT LED turns on, but the 100Mbps LED remains off.

A4: When the 100Mbps LED remains off, the computer's connection speed is 10Mbps.

Q5: I connected a Power-over-Ethernet (PoE) device into the switch's PoE port, but the PoE Status LED remains off.

A5: Check the connections between the PoE port and the PoE device. Make sure that the CAT-5 cable is properly inserted into the PoE port and PoE device.

If you still encounter problems or have any questions regarding the TPE-224WS, please refer to the User's Guide included on the Utility CD-ROM or contact Trendnet's Technical Support Department.

Certifications

This equipment has been tested and found to comply with FCC and CE Rules.

Operation is subject to the following two conditions:

- (1) This device may not cause harmful interference.
- (2) This device must accept any interference received. Including interference that may cause undesired operation.



Waste electrical and electronic products must not be disposed of with household waste. Please recycle where facilities exist. Check with your Local Authority or Retailer for recycling advice.



NOTE: THE MANUFACTURER IS NOT RESPONSIBLE FOR ANY RADIO OR TV INTERFERENCE CAUSED BY UNAUTHORIZED MODIFICATIONS TO THIS EQUIPMENT. SUCH MODIFICATIONS COULD VOID THE USER'S AUTHORITY TO OPERATE THE EQUIPMENT.

Limited Warranty

TRENDnet warrants its products against defects in material and workmanship, under normal use and service, for the following lengths of time from the date of purchase.

TPE-224WS - 5-Year Warranty

If a product does not operate as warranted above during the applicable warranty period, TRENDnet shall, at its option and expense, repair the defective product or deliver to customer an equivalent product to replace the defective item. All products that are replaced will become the property of TRENDnet. Replacement products may be new or reconditioned.

TRENDnet shall not be responsible for any software, firmware, information, or memory data of customer contained in, stored on, or integrated with any products returned to TRENDnet pursuant to any warranty.

There are no user serviceable parts inside the product. Do not remove or attempt to service the product through any unauthorized service center. This warranty is voided if (i) the product has been modified or repaired by any unauthorized service center, (ii) the product was subject to accident, abuse, or improper use (iii) the product was subject to conditions more severe than those specified in the manual.

Warranty service may be obtained by contacting TRENDnet office within the applicable warranty period for a Return Material Authorization (RMA) number, accompanied by a copy of the dated proof of the purchase. Products returned to TRENDnet must be pre-authorized by TRENDnet with RMA number marked on the outside of the package, and sent prepaid, insured and packaged appropriately for safe shipment.

WARRANTIES EXCLUSIVE: IF THE TRENDNET PRODUCT DOES NOT OPERATE AS WARRANTED ABOVE, THE CUSTOMER'S SOLE REMEDY SHALL BE, AT TRENDNET'S OPTION, REPAIR OR REPLACEMENT. THE FOREGOING WARRANTIES AND REMEDIES ARE EXCLUSIVE AND ARE IN LIEU OF ALL OTHER WARRANTIES, EXPRESSED OR IMPLIED, EITHER IN FACT OR BY OPERATION OF LAW, STATUTORY OR OTHERWISE, INCLUDING WARRANTIES OF MERCHANTABILITY AND FITNESS FOR A PARTICULAR PURPOSE. TRENDNET NEITHER ASSUMES NOR AUTHORIZES ANY OTHER PERSON TO ASSUME FOR IT ANY OTHER LIABILITY IN CONNECTION WITH THE SALE, INSTALLATION, MAINTENANCE OR USE OF TRENDNET'S PRODUCTS.

TRENDNET SHALL NOT BE LIABLE UNDER THIS WARRANTY IF ITS TESTING AND EXAMINATION DISCLOSE THAT THE ALLEGED DEFECT IN THE PRODUCT DOES NOT EXIST OR WAS CAUSED BY CUSTOMER'S OR ANY THIRD PERSON'S MISUSE, NEGLIGENCE, IMPROPER INSTALLATION OR TESTING, UNAUTHORIZED ATTEMPTS TO REPAIR OR MODIFY, OR ANY OTHER CAUSE BEYOND THE RANGE OF THE INTENDED USE, OR BY ACCIDENT, FIRE, LIGHTNING, OR OTHER HAZARD.

LIMITATION OF LIABILITY: TO THE FULL EXTENT ALLOWED BY LAW TRENDNET ALSO EXCLUDES FOR ITSELF AND ITS SUPPLIERS ANY LIABILITY, WHETHER BASED IN CONTRACT OR TORT (INCLUDING NEGLIGENCE), FOR INCIDENTAL, CONSEQUENTIAL, INDIRECT, SPECIAL, OR PUNITIVE DAMAGES OF ANY KIND, OR FOR LOSS OF REVENUE OR PROFITS, LOSS OF BUSINESS, LOSS OF INFORMATION OR DATA, OR OTHER FINANCIAL LOSS ARISING OUT OF OR IN CONNECTION WITH THE SALE, INSTALLATION, MAINTENANCE, USE, PERFORMANCE, FAILURE, OR INTERRUPTION OF THE POSSIBILITY OF SUCH DAMAGES, AND LIMITS ITS LIABILITY TO REPAIR, REPLACEMENT, OR REFUND OF THE PURCHASE PRICE PAID, AT TRENDNET'S OPTION. THIS DISCLAIMER OF LIABILITY FOR DAMAGES WILL NOT BE AFFECTED IF ANY REMEDY PROVIDED HEREIN SHALL FAIL OF ITS ESSENTIAL PURPOSE.

Governing Law: This Limited Warranty shall be governed by the laws of the state of California.

Note: AC/DC Power Adapter, Cooling Fan, and Power Supply carry 1-Year Warranty



TRENDnet Technical Support

US • Canada

Toll Free Telephone: 1(866) 845-3673

24/7 Tech Support

Europe (Germany • France • Italy • Spain • Switzerland • UK)

Toll Free Telephone: +00800 60 76 76 67

English/Espanol - 24/7

Francais/Deutsch - 11am-8pm, Monday - Friday MET

Worldwide

Telephone: +(31) (0) 20 504 05 35

English/Espanol - 24/7

Francais/Deutsch - 11am-8pm, Monday - Friday MET

Product Warranty Registration

Please take a moment to register your product online.

Go to TRENDnet's website at <http://www.trendnet.com>

TRENDnet

3135 Kashiwa Street
Torrance, CA 90505
USA