



# TRENDNET



## Quick Installation Guide



**TPE-224WS**

# Table of Contents

Français .....	1
1. Avant de commencer .....	1
2. Installation du matériel .....	2
3. Utilitaire de gestion Internet .....	3
Troubleshooting .....	6

# 1. Avant de commencer



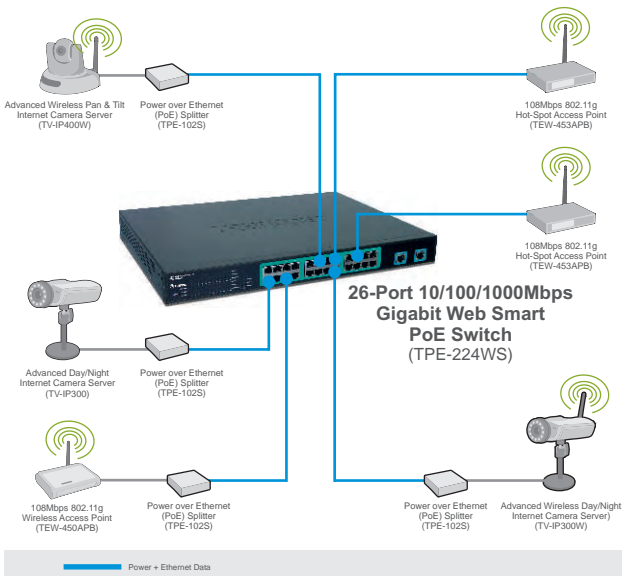
## Contenu de l'emballage

- TPE-224WS
- Guide d'installation rapide
- CD-ROM avec l'utilitaire
- 2 supports de fixation avec vis
- Cordon d'alimentation (courant alternatif)

## Configuration du système

- Navigateur Internet : Internet Explorer (5.0 ou supérieur), Netscape (6.0 ou supérieur)
- Ordinateur avec adaptateur réseau installé

## Application



## 2. Installation du matériel

1. Branchez le **Cordon d'alimentation** à l'arrière du TPE-224WS et à une prise de courant.



2. Branchez un câble réseau CAT-5 de l'ordinateur à un port Ethernet disponible du TPE-224WS.



# 3. Utilitaire de gestion Internet

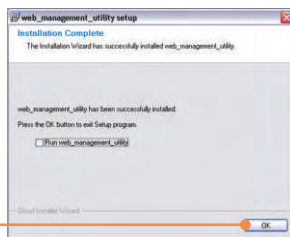
Remarque Si vous désirez découvrir aisément tous les Switches de gestion Internet du réseau, assignez une adresse IP, modifiez le mot de passe et effectuez la mise à jour du firmware. Ensuite installez l'utilitaire de gestion Internet. Suivez les étapes ci-dessous.

## Utilisateurs Windows

1. Insérez le **CD-ROM avec l'utilitaire** dans le lecteur de CD-ROM de votre ordinateur et cliquez ensuite sur **Install Utility** (Installer l'utilitaire).



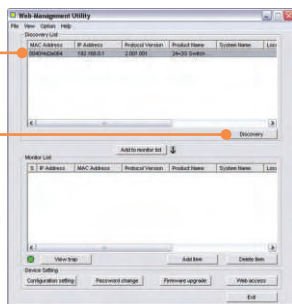
2. Suivez les instructions de l'**assistant d'installation**. Cliquez sur **OK**.



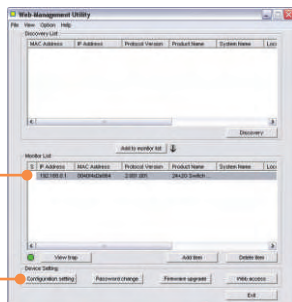
3. Cliquez sur **Démarrer > Programmes > web\_management\_utility** (utilitaire de gestion Internet) et cliquez ensuite sur **web\_management\_utility**.



4. Cliquez sur **Discovery** (Découvrez), et ensuite double-cliquez sur le **Switch** qui apparaît dans la liste des découvertes (**Discovery List**).



5. Cliquez sur le **Switch** de la liste de contrôle (**Monitor List**) et ensuite sur **Configuration setting** (Paramétrage de la configuration).



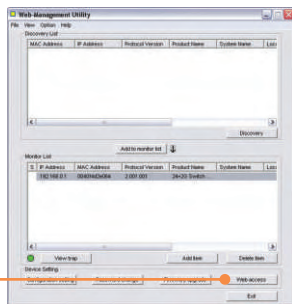
6. Configurez l'**adresse IP**, le **masque de sous réseau**, la **passerelle**, et le **mot de passe**. Cliquez sur **Set** (Enregistrer).



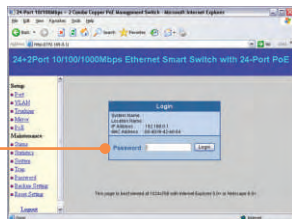
7. Cliquez sur **OK**.



8. Cliquez sur **Web access** (Accès Internet).



9. Saisissez votre **mot de passe** et cliquez ensuite sur **Login** (Enregistrement).



Si vous désirez des informations détaillées sur la configuration et les paramètres avancés du TPE-224WS, veuillez consulter la rubrique Dépannage, le guide de l'utilisateur sur CD-ROM ou le site Internet de Trendnet sur <http://www.trendnet.com>.

**Q1: After connecting the TPE-224WS to a power outlet, the LEDs do not turn on.**

**A1:** Check the connection of the power cord to the TPE-224WS and the power outlet. Also check that the power outlet is receiving power.

**Q2: After installing the Web-Management Utility, I clicked Discovery and the Utility is unable to discover the TPE-224WS. What should I do?**

**A2:** Make sure that the TPE-224WS is powered on and that all connections are secure. Also check that your computer's IP Address is on the same network segment as the TPE-224WS. The default IP Address of the TPE-224WS is <http://192.168.0.1> and the default password is "admin".

**Q3: When I access the TPE-224WS using a web browser, I get a screen that tells me "only one user can login". What should I do?**

**A3:** Another computer is configuring the TPE-224WS. Please wait until the user logs off. If the other user has already logged off and you still get the same screen, then disconnect the power cord from the TPE-224WS, wait for 5 seconds, reconnect the power cord to the TPE-224WS, allow 5 seconds for the switch to power on, and then attempt to access the web configuration page to login.

**Q4: When I connect a computer to the switch's port, the LINK/ACT LED turns on, but the 100Mbps LED remains off.**

**A4:** When the 100Mbps LED remains off, the computer's connection speed is 10Mbps.

**Q5: I connected a Power-over-Ethernet (PoE) device into the switch's PoE port, but the PoE Status LED remains off.**

**A5:** Check the connections between the PoE port and the PoE device. Make sure that the CAT-5 cable is properly inserted into the PoE port and PoE device.

If you still encounter problems or have any questions regarding the TPE-224WS, please refer to the User's Guide included on the Utility CD-ROM or contact Trendnet's Technical Support Department.

## Certifications

This equipment has been tested and found to comply with FCC and CE Rules.

Operation is subject to the following two conditions:

- (1) This device may not cause harmful interference.
- (2) This device must accept any interference received. Including interference that may cause undesired operation.



Waste electrical and electronic products must not be disposed of with household waste. Please recycle where facilities exist. Check with you Local Authority or Retailer for recycling advice.



**NOTE:** THE MANUFACTURER IS NOT RESPONSIBLE FOR ANY RADIO OR TV INTERFERENCE CAUSED BY UNAUTHORIZED MODIFICATIONS TO THIS EQUIPMENT. SUCH MODIFICATIONS COULD VOID THE USER'S AUTHORITY TO OPERATE THE EQUIPMENT.





# TRENDnet

## TRENDnet Technical Support

### US/Canada Support Center

**Contact**

**Telephone:** 1(866) 845-3673

**Email:** [support@trendnet.com](mailto:support@trendnet.com)

**Tech Support Hours**

24/7 Toll Free Tech Support



### European Support Center

**Contact****Telephone:**

Deutsch : +49 (0) 6331 / 268-460

Français : +49 (0) 6331 / 268-461

0800-90-71-61 (numéro vert)

Español : +49 (0) 6331 / 268-462

English : +49 (0) 6331 / 268-463

Italiano : +49 (0) 6331 / 268-464

Dutch : +49 (0) 6331 / 268-465

**Fax:** +49 (0) 6331 / 268-466

**Tech Support Hours**

8:00am - 6:00pm

Middle European Time

Monday - Friday

## Product Warranty Registration

Please take a moment to register your product online.

Go to TRENDnet's website at <http://www.trendnet.com>

## TRENDnet

3135 Kashiwa Street

Torrance, CA 90505

USA