

## Quick Installation Guide



**TMR-121EC**  
H/W: V1.0R

# Table of Contents

|                                    |   |
|------------------------------------|---|
| Français .....                     | 1 |
| 1. Avant de commencer .....        | 1 |
| 2. Procéder à l'installation ..... | 3 |
| Troubleshooting .....              | 5 |

# 1. Avant de commencer



## Contenu de l'emballage

- TMR-121EC
- Guide d'installation rapide

## Système Requis

- Logement pour carte Express/34 ou Express/54
- Microprocesseur : 300 MHz ou supérieur (XP/2000)/ 800MHz ou supérieur (Windows Vista)
- Mémoire: 256MB RAM ou minimum (XP/2000)/ 512MB RAM ou minimum (Windows Vista)
- Windows 2000/XP(32-/64-bit)/Vista(32-/64-bit), Mac OS X (10.1 ~ 10.5)
- Cartes mémoires supportées

### Connexion directe

XD-Picture Type-M/Type-H (XD) v.1.2B

Memory Stick (MS) v. 1.0

MemoryStick Pro (MS Pro) v. 1.0

Secure Digital (SD) v1.0/1.1/2.0/ SDHC (class 6)

Micro Secure Digital (MMC, MMC Plus) v. 4.1

### Connexion avec un adaptateur

MemoryStick Duo (MS Duo) v. 1.0

MemoryStick Pro Duo (MS Pro Duo) v. 1.0

ReSize MultiMediaCard (RS MMC) v. 3.31

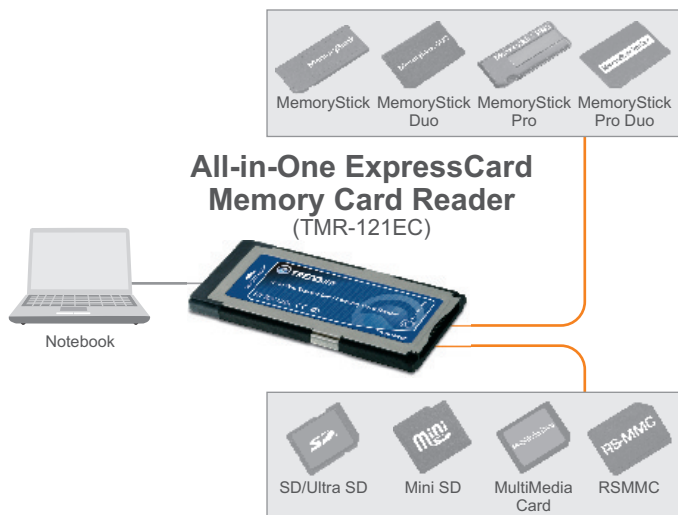
MultiMediaCard Mobile (MMC Mobile) v. 4.1.

MultiMediaCard Micro (MMC Micro) v. 4.1

Mini Secure Digital ( Mini DS) v.1.0/1.1

Micro Secure Digital (Micro SD, T-Flash) v. 1.0

## Application



## 2. Procéder à l'installation

**Remarque:** Pour les instructions d'installation pour Mac OS X (10.1~10.5), merci de vous référer à la question 1 qui se trouve dans la section Troubleshooting.

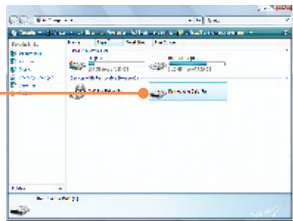
1. Allumez votre PC portable et attendez que le bureau apparaisse.

2. Insérez fermement la carte Express dans un logement pour carte Express du portable.



3. Les pilotes s'installeront automatiquement.

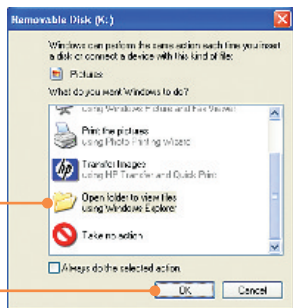
4. Double-cliquez sur Poste de travail ou Ordinateur (Windows Vista) et vérifiez que l'icône Disque amovible apparaisse.



5. Branchez votre carte mémoire au logement adéquat de votre lecteur de carte.

6. Cliquez sur **Open folder to view files using Windows Explorer** (Ouvrir le dossier pour voir les fichiers utilisant Windows Explorer).

7. Cliquez sur **OK** (Windows 2000/XP only).



### Enregistrez votre produit

Afin d'être sûr de recevoir le meilleur niveau de service clientèle et le meilleur support possibles, veuillez prendre le temps d'enregistrer votre produit en ligne sur:

[www.TRENDnet.com/register](http://www.TRENDnet.com/register)

Nous vous remercions d'avoir choisi Trendnet

**Q1: How do I install on my Macintosh?**

**A1:** First, verify that your Macintosh is running Mac OS X (10.1~10.5). Other versions of Mac OS are not supported. Second, turn on your notebook PC. Third, insert the TMR-121EC firmly into an available ExpressCard slot. Drivers will install automatically. Fourth, insert your memory card to the TMR-121EC. Fifth, the memory card will appear as a removable media device icon (the name and appearance of each icon depends on the type of memory card).

**Q2: Can I connect or disconnect the TMR-121EC while the computer is on?**

**A2:** Yes, you can connect or disconnect the TMR-121EC because it is Plug-and-Play and hot-pluggable.

**Q3: I am unable to insert my memory card into the TMR-121EC. What should I do?**

**A3:** First, make sure that you are using a supported memory card (see section 1). Second, insert XD-Picture cards with gold contacts facing up. Insert all other memory cards with the gold contacts facing down. Third, an adapter is required for the following memory cards: MS Duo, MS Pro Duo, RS MMC, MMC Mobile, MMC Micro, Mini DS, and Micro SD.

**Q4: After successful installation of the TMR-121EC, I inserted my memory card into the slot and it is not working? What should I do?**

**A4:** Make sure the memory card is properly inserted in the TMR-121EC.

If you have any questions regarding the TMR-121EC Memory Card Reader/Writer, please refer to the User's Guide included on the Utility & Driver CD-ROM or contact TRENDnet's Technical Support Department..

### Certifications

This equipment has been tested and found to comply with FCC and CE Rules.

Operation is subject to the following two conditions:

- (1) This device may not cause harmful interference.
- (2) This device must accept any interference received. Including interference that may cause undesired operation.



Waste electrical and electronic products must not be disposed of with household waste. Please recycle where facilities exist. Check with you Local Authority or Retailer for recycling advice.



**NOTE:** THE MANUFACTURER IS NOT RESPONSIBLE FOR ANY RADIO OR TV INTERFERENCE CAUSED BY UNAUTHORIZED MODIFICATIONS TO THIS EQUIPMENT. SUCH MODIFICATIONS COULD VOID THE USER'S AUTHORITY TO OPERATE THE EQUIPMENT.

### ADVERTENCIA

En todos nuestros equipos se mencionan claramente las características del adaptador de alimentación necesario para su funcionamiento. El uso de un adaptador distinto al mencionado puede producir daños físicos y/o daños al equipo conectado. El adaptador de alimentación debe operar con voltaje y frecuencia de la energía eléctrica domiciliar existente en el país o zona de instalación.





**TRENDnet**<sup>®</sup>

## Product Warranty Registration

Please take a moment to register your product online.  
Go to TRENDnet's website at <http://www.trendnet.com/register>

**TRENDnet**<sup>®</sup>

20675 Manhattan Place  
Torrance, CA 90501  
USA