


TRENDnet[®]



Quick Installation Guide  

TL2-E284
1.01

Table of Contents

English	1
1. Before You Start	1
2. Hardware Installation	2
3. LEDs	3
4. Configure the Switch	5
.....	
Troubleshooting	9



Package Contents

- TL2-E284
- Multi-Language Quick Installation Guide
- CD-ROM (User's Guide)
- RS-232 cable (3 m / 9.8 ft.)
- Power Cord (1.8 m / 5.9 ft.)
- Rack Mount Kit

Installation Requirements

- Web Browser: Internet Explorer (6.0 or higher)
- A computer with a network adapter properly installed
- CAT-5e or CAT-6 Network Cable
- The surface must support at least 2 Kg (4.4 lbs) for the Switch
- The power outlet should be within 1.8 meters (5.9 feet) of the Switch
- Make sure that there is proper heat dissipation from and adequate ventilation around the Switch
- Do not place heavy objects on the Switch

Optional Equipment

- EIA standard 19" rack
- Mini-GBIC module (e.g. TEG-MGBSX, TEG-MGBS10, TEG-MGBS40, TEG-MGBS80, TEG-MGBS10D35, TEG-MGBS40D35) for Mini-GBIC slots

2. Hardware Installation

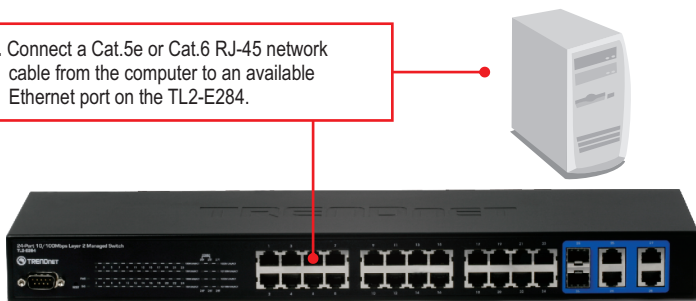
Note:

Note: The Mini-GBIC slots are shared with port 25 and 26 Gigabit Ethernet ports. When the Mini-GBIC slots are in use, port 25 and 26 Gigabit Ethernet ports are disabled.

1. Connect the **Power Cord** to the TL2-E284 and then to a power outlet.



2. Connect a Cat.5e or Cat.6 RJ-45 network cable from the computer to an available Ethernet port on the TL2-E284.



3. Verify that the following panel lights are on: **PWR(Power)**, **SYS(System)** and **10M LINK/ACT**, **100M LINK/ACT**, **10/100M LINK/ACT** or **1000 LINK/ACT**.



ENGLISH

FRANÇAIS

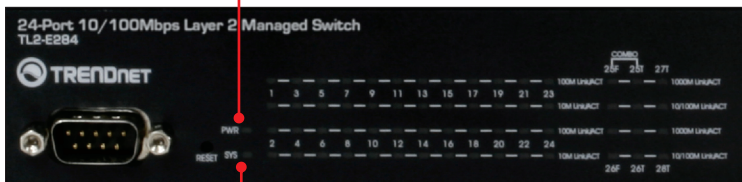
DEUTSCH

ESPAÑOL

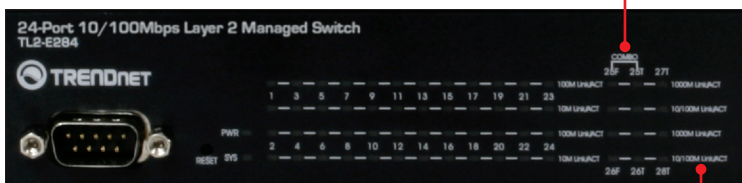
РУССКИЙ

3. LEDs

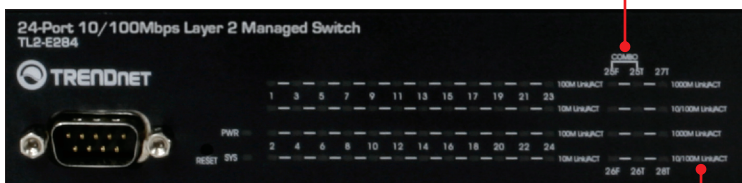
PWR (Power)



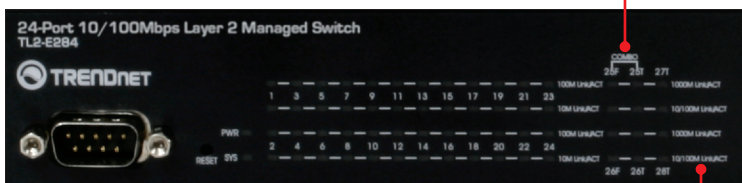
SYS (System)



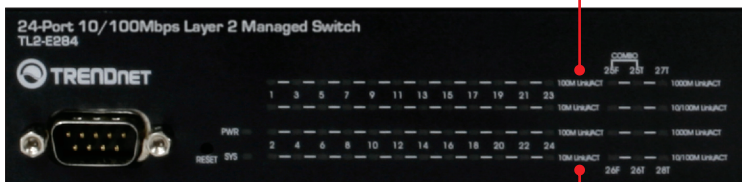
1000M LINK/ACT



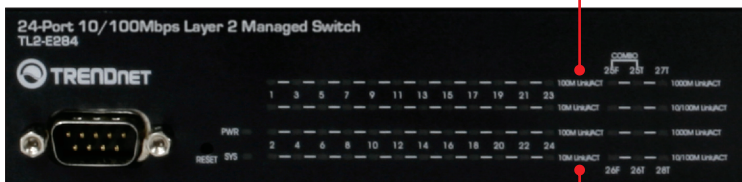
10/100M LINK/ACT



10/100M LINK/ACT



10M LINK/ACT



ENGLISH

FRANÇAIS

DEUTSCH

ESPAÑOL

РУССКИЙ

Device Status LED	Color	Sequence	Definition
PWR (Power)	Green	Solid	Device powered On
	N/A	Off	Device powered Off
SYS (System)	Green	Solid	Device is ready
	N/A	Off	Device is not ready
Ethernet LED (RJ-45)	Color	Sequence	Definition
100M Link/ACT	Green	Solid	100/200Mbps (Half/Full Duplex) Connected (per port)
		Blinking	100/200Mbps (Half/Full Duplex) Data Transmitting/Receiving (per port)
		Off	10/20Mbps (Half/Full) or no connection to the port
10M Link/ACT	Amber	Solid	10/20Mbps (Half/Full Duplex) Connected (per port)
		Blinking	10/20Mbps (Half/Full Duplex) Data Transmitting/Receiving (per port)
		Off	100/200Mbps (Half/Full), or no connection to the port
Combo Gigabit Ethernet (RJ-45) / Mini-GBIC LED	Color	Sequence	Definition
1000M Link/ACT	Green	Solid	2000Mbps (Full Duplex) Connected (per port)
		Blinking	2000Mbps (Full Duplex) Data Transmitting / Receiving (per port)
		Off	100/200Mbps (Half/Full), 10/20Mbps (Half/Full), or no connection to the port
10/100M Link/ACT	Amber	Solid	10/20Mbps (Half/Full Duplex) or 100/200Mbps (Half/Full Duplex) Connected (per port)
		Blinking	10/20Mbps (Half/Full Duplex) or 100/200Mbps (Half/Full Duplex) Data Transmitting/Receiving (per port)
		Off	2000Mbps (Full), or no connection to the port

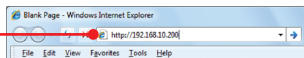
4. Configure the Switch

Note:

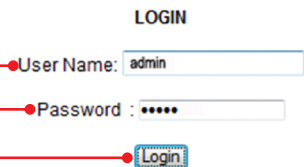
1. Before the Switch can be configured, a Static IP address must be assigned to your computer's network adapter in the subnet of 192.168.10.x. Since the Switch's default IP address is 192.168.10.200, make sure no other network devices are assigned an IP address of 192.168.10.200. (Refer to Troubleshooting section on how to configure TCP/IP settings on your PC.)
2. There are three methods of configuring the TL2-E284: Web Browser, Console Port and Telnet.

1. Using Web Browser

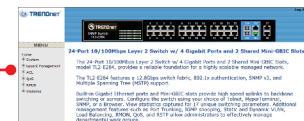
1. Open your web browser, type **http://192.168.10.200** in the Address bar, and then press **Enter**.



2. Enter the User name and Password, and then click **Login**. By default:
User Name: **admin**
Password: **admin**



3. Select the desired options for configuring the switch.



2. Using the Console Port

Note:

A terminal program such as HyperTerminal is required to configure the switch via the Console Port. The instructions shown below demonstrates how to configure the Switch on a Windows PC using HyperTerminal.

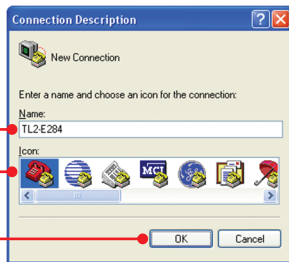
1. Connect the RS-232 cable from a serial port on your PC to the console port on the switch.



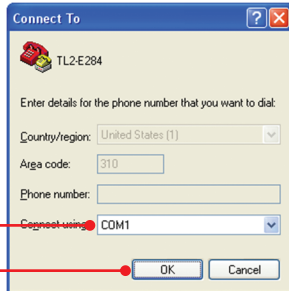
2. Go to Start → Programs → Accessories → Communications → HyperTerminal



3. Enter a name, choose an icon and then click **OK**.

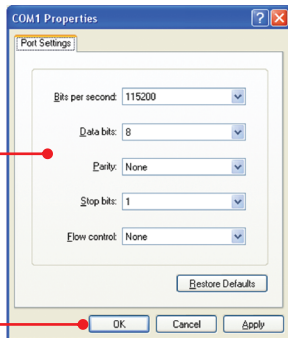


4. Select the correct COM port (e.g. COM1, COM2) and then click **OK**.



5. Enter the following, click **Apply** and then click **OK**.

Bits per second: 115200
 Data bits: 8
 Parity: None
 Stop bits: 1
 Flow control: None

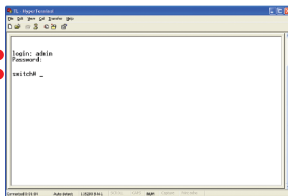


6. Press the Enter Key.

7. Enter the **User Name** for login. Then press the **Enter**. Then Enter the Password and then press **Enter**.

By default
 login: **admin**
 Password: **admin**

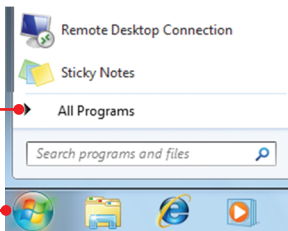
If you do not see the login prompt, please power cycle the switch by unplugging the power cord, wait 15 seconds and then plug it back in.



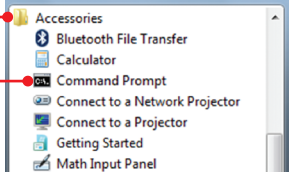
3. Using Telnet

The Telnet function may or may not be included with your computer's operating system. For instructions on how to enable Telnet in Windows 7/Vista, please refer to the Troubleshooting section.

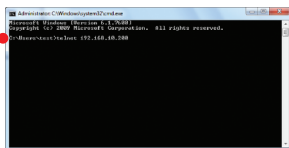
1. Click the Windows / Start icon on the bottom left hand corner and click **All Programs**.



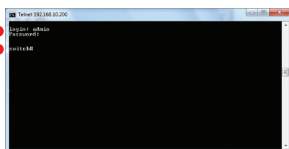
2. Click Accessories and then click Command Prompt.



3. Type in telnet 192.168.10.200. Then press the **Enter** key.



4. Enter the **User Name** for login. Then press the **Enter**. Then Enter the Password and then press **Enter**. By default
login : **admin**
Password: **admin**
If you do not see the login prompt, please power cycle the switch by unplugging the power cord, wait 15 seconds and then plug it back in.



Configuration is now complete

For detailed information regarding the **TL2-E284** configuration and advanced settings, please refer to User's Guide included on the Utility CD-ROM, or TRENDnet's website at <http://www.trendnet.com>.

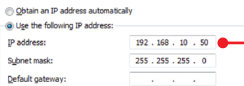
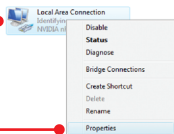
Register Your Product

To ensure the highest level of customer service and support, please take a moment to register your product Online at: www.trendnet.com/register
Thank you for choosing TRENDnet

1. How do I configure TCP/IP settings on my computer?

Windows 7

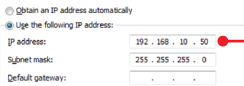
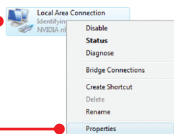
1. Go into the **Control Panel**, click **Network and Internet**, click **Network and Sharing Center**, click **Change Adapter Settings** and then right-click the **Local Area Connection** icon and then click **Properties**.



2. Click **Internet Protocol Version 4(TCP/IPv4)** and then click **Properties**. Then click on **Use the following IP address**, and make sure you assign your network adapter an IP address in the subnet of 192.168.10.x.

Windows Vista

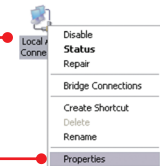
1. Go into the **Control Panel**, click **Network and Internet**, click **Network and Sharing Center**, click **Manage Network Connections** and then right-click the **Local Area Connection** icon and then click **Properties**.



2. Click **Internet Protocol Version 4(TCP/IPv4)** and then click **Properties**. Then click on **Use the following IP address**, and make sure you assign your network adapter an IP address in the subnet of 192.168.10.x.

Windows XP / 2000

1. Go into the **Control Panel**, double-click the **Network Connections** icon and then right-click the **Local Area Connection** icon and then click **Properties**.



2. Click **Internet Protocol Version (TCP/IP)** and then click **Properties**. Then click on **Use the following IP address**, and make sure you assign your network adapter an IP address in the subnet of 192.168.10.x.

2. I typed http://192.168.10.200 in my Internet Browser's Address Bar, but an error message says "The page cannot be displayed." How can I get into the TL2-E284's web configuration page?

1. Check your hardware settings again by following the instructions in section 2.
2. Make sure the PWR(Power), SYS(System) and Link/ACT lights are lit.
3. Make sure your network adapter's TCP/IP settings are configured properly (see Q1).
4. Since the Switch's default IP address is 192.168.10.200, make sure that no other network devices are assigned an IP address of 192.168.10.200.

3. If my switch's IP is different than the network's subnet, what should I do?

You should still configure the Switch first. After all the settings are applied, go to the Switch's configuration page, click on Administrator, click IP & Management Mode and change the IP address of the Switch to match your network's IP.

4. What are the default port settings for configuring the Switch through the console port using HyperTerminal?

Bits per Second: 115200; Data bits: 8; Parity: None; Stop bits: 1; Flow control: None.

5. I changed the IP address of the switch, but I forgot it. How do I reset my TL2-E284?

Follow the instructions below:

1. Take a pin or paper clip and press the reset button on the front of the switch
2. Wait 15 seconds then let go.

The default IP address of the switch is 192.168.10.200. The default user name and password is admin.

6. How do I enable Telnet on my Windows 7/Vista computer?

Follow the instructions below:

Windows 7

1. Go to Control panel and click Programs.
2. Click Turn Windows features on or off.
3. Check the box next to Telnet client and then click OK.
4. Please wait while Windows enables Telnet.

Windows Vista

1. Go to Control Panel and click on Classic View.
2. Click on Programs and Features.
3. Click Turn Windows features on or off.
4. Check the box next to Telnet Client and then click OK.
5. Please wait while Windows enables Telnet.

If you still encounter problems or have any questions regarding the **TL2-E284** please contact TRENDnet's Technical Support Department.

Declaration of Conformity

TRENDNET®

Company Information:

Company Name:

TRENDnet, Inc.

Company Address:

20675 Manhattan Place

Torrance, CA 90501

USA



Product Information:

Product Description:

24-Port 10/100Mbps Layer 2 Switch w/ 4 Gigabit Ports and 2 Shared Mini-GBIC Slots

Model Number:

TL2-E284

Brand name:

TRENDnet

Technical Standards:

EN 55022 : 2006 + A1 : 2007 Class A

EN 61000-3-2 : 2006 Class A

EN 61000-3-3 :1995 + A1 : 2001 + A2 : 2005

EN 55024 : 1998 + A1 : 2001 + A2 : 2003

AS/NZS CISPR 22 : 2006 Class A

Declaration:

The product is herewith confirmed to comply with the requirements of Directive 1999/5/EC of the Council (European Parliament) on the radio and telecommunications terminal equipment and Energy-related products Directive 2009/125/EC.

I hereby declare that the products and devices mentioned above are consistent with the standards and provisions of the guidelines.

Sonny Su

Full Name

September 23, 2010

Date

Director of Technology

Position / Title

A handwritten signature in black ink, appearing to read 'Sonny Su', written over a horizontal line.

Signature

GPL/LGPL General Information

This TRENDnet product includes free software written by third party developers. These codes are subject to the GNU General Public License ("GPL") or GNU Lesser General Public License ("LGPL"). These codes are distributed WITHOUT WARRANTY and are subject to the copyrights of the developers. TRENDnet does not provide technical support for these codes. The details of the GNU GPL and LGPL are included in the product CD-ROM.

Please also go to (<http://www.gnu.org/licenses/gpl.txt>) or (<http://www.gnu.org/licenses/lgpl.txt>) for specific terms of each license.

The source codes are available for download from TRENDnet's web site (http://trendnet.com/downloads/list_gpl.asp) for at least three years from the product shipping date.

You could also request the source codes by contacting TRENDnet.
20675 Manhattan Place, Torrance, CA 90501, USA. Tel: +1-310-961-5500 Fax: +1-310-961-5511

Informations générales GPL/LGPL

Ce produit TRENDnet comprend un logiciel libre écrit par des programmeurs tiers. Ces codes sont sujet à la GNU General Public License ("GPL" Licence publique générale GNU) ou à la GNU Lesser General Public License ("LGPL" Licence publique générale limitée GNU). Ces codes sont distribués SANS GARANTIE et sont sujets aux droits d'auteurs des programmeurs. TRENDnet ne fournit pas d'assistance technique pour ces codes. Les détails concernant les GPL et LGPL GNU sont repris sur le CD-ROM du produit.

Veuillez également vous rendre en (<http://www.gnu.org/licenses/gpl.txt>) ou en (<http://www.gnu.org/licenses/lgpl.txt>) pour les conditions spécifiques de chaque licence.

Les codes source sont disponibles au téléchargement sur le site Internet de TRENDnet web site (http://trendnet.com/downloads/list_gpl.asp) durant au moins 3 ans à partir de la date d'expédition du produit.

Vous pouvez également demander les codes source en contactant TRENDnet.
20675 Manhattan Place, Torrance, CA 90501, USA. Tel: +1-310-961-5500 Fax: +1-310-961-5511

Allgemeine Informationen zu GPL/LGPL

Dieses Produkt enthält die freie Software "netfilter/iptables" (© 2000-2004 netfilter project <http://www.netfilter.org>) und die freie Software „Linux „mtd“ (Memory Technology Devices) Implementation (© 2000 David Woodhouse), erstmals integriert in Linux Version 2.4.0-test 3 v. 10.07.2000 (<http://www.kernel.org/pub/linux/kernel/v2.4/old-test-kernels/linux-2.4.0-test3.tar.bz2>), sowie weitere freie Software. Sie haben durch den Erwerb dieses Produktes keinerlei Gewährleistungsansprüche gegen die Berechtigten an der oben genannten Software erworben; weil diese die Software kostenfrei lizenzieren gewähren sie keine Haftung gemäß unten abgedruckten Lizenzbedingungen. Die Software darf von jedermann im Quell- und Objektcode unter Beachtung der Lizenzbedingungen der GNU General Public License Version 2, und GNU Lesser General Public License (LGPL) vervielfältigt, verbreitet und verarbeitet werden.

Die Lizenz ist unten im englischsprachigen Originalwortlaut wiedergegeben. Eine nichtoffizielle Übersetzung in die deutsche Sprache finden Sie im Internet unter (<http://www.gnu.de/documents/gpl-2.0.de.html>). Eine allgemeine öffentliche GNU Lizenz befindet sich auch auf der mitgelieferten CD-ROM.

Sie können Quell- und Objektcode der Software für mindestens drei Jahre auf unserer Homepage www.trendnet.com im Downloadbereich (http://trendnet.com/langen/downloads/list_gpl.asp) downloadend. Sofern Sie nicht über die Möglichkeit des Downloads verfügen können Sie bei TRENDnet.

20675 Manhattan Place, Torrance, CA 90501 -U.S.A. -, Tel.: +1-310-961-5500, Fax: +1-310-961-5511 die Software anfordern.

Información general sobre la GPL/LGPL

Este producto de TRENDnet incluye un programa gratuito desarrollado por terceros. Estos códigos están sujetos a la Licencia pública general de GNU ("GPL") o la Licencia pública general limitada de GNU ("LGPL"). Estos códigos son distribuidos SIN GARANTÍA y están sujetos a las leyes de propiedad intelectual de sus desarrolladores. TRENDnet no ofrece servicio técnico para estos códigos. Los detalles sobre las licencias GPL y LGPL de GNU se incluyen en el CD-ROM del producto.

Consulte también el (<http://www.gnu.org/licenses/gpl.txt>) ó el (<http://www.gnu.org/licenses/lgpl.txt>) para ver las cláusulas específicas de cada licencia.

Los códigos fuentes están disponibles para ser descargados del sitio Web de TRENDnet (http://trendnet.com/downloads/list_gpl.asp) durante por lo menos tres años a partir de la fecha de envío del producto.

También puede solicitar el código fuente llamando a TRENDnet.
20675 Manhattan Place, Torrance, CA 90501, USA. Tel: +1-310-961-5500 Fax: +1-310-961-5511

Общая информация о лицензиях GPL/LGPL

В состав данного продукта TRENDnet входит бесплатное программное обеспечение, написанное сторонними разработчиками. Это ПО распространяется на условиях лицензий GNU General Public License ("GPL") или GNU Lesser General Public License ("LGPL"). Программы распространяются БЕЗ ГАРАНТИИ и охраняются авторскими правами разработчиков. TRENDnet не оказывает техническую поддержку этого программного обеспечения. Подробное описание лицензий GNU GPL и LGPL можно найти на компакт-диске, прилагаемом к продукту.

В пунктах (<http://www.gnu.org/licenses/gpl.txt>) и (<http://www.gnu.org/licenses/lgpl.txt>) изложены конкретные условия каждой из лицензий.

Исходный код программ доступен для загрузки с веб-сайта TRENDnet (http://trendnet.com/downloads/list_gpl.asp) в течение, как минимум, трех лет со дня поставки продукта.

Кроме того, исходный код можно запросить по адресу TRENDnet.
20675 Manhattan Place, Torrance, CA 90501, USA. Tel: +1-310-961-5500 Fax: +1-310-961-5511

GPL/LGPL informações Gerais

Este produto TRENDnet inclui software gratuito desenvolvido por terceiros. Estes códigos estão sujeitos ao GPL (GNU General Public License) ou ao LGPL (GNU Lesser General Public License). Estes códigos são distribuídos SEM GARANTIA e estão sujeitos aos direitos autorais dos desenvolvedores. TRENDnet não presta suporte técnico a estes códigos. Os detalhes do GNU GPL e do LGPL estão no CD-ROM do produto. Favor acessar <http://www.gnu.org/licenses/gpl.txt> ou <http://www.gnu.org/licenses/lgpl.txt> para os termos específicos de cada licença.

Os códigos fonte estão disponíveis para download no site da TRENDnet (http://trendnet.com/langen/downloads/list_gpl.asp) por pelo menos três anos da data de embarque do produto.

Você também pode solicitar os códigos fonte contactando TRENDnet, 20675 Manhattan Place, Torrance, CA 90501, USA. Tel: +1-310-961-5500, Fax: +1-310-961-5511.

GPL/LGPL üldinformatsioon

See TRENDneti toode sisaldab vaba tarkvara, mis on kirjutatud kolmanda osapoole poolt. Koodid on allutatud GNU (General Public License) Üldise Avaliku Litsentsi (GPL) või GNU (Lesser General Public License) ("LGPL") Vähem Üldine Avalik Litsentsiga. Koode vahendatakse ILMA GARANTIITA ja need on allutatud arendajate poolt. TRENDnet ei anna koodidele tehnilist tuge. Detailsemat infot GNU GPL ja LGPL kohta leiate toote CD-ROMil. Infot mõlema litsentsi spetsiifiliste terminite kohta leiate (<http://www.gnu.org/licenses/gpl.txt>) või (<http://www.gnu.org/licenses/lgpl.txt>).

Infot mõlema litsentsi spetsiifiliste terminite kohta leiate (<http://www.gnu.org/licenses/gpl.txt>) või (<http://www.gnu.org/licenses/lgpl.txt>). Lähtekoodi on võimalik alla laadida TRENDneti kodulehelt (http://trendnet.com/langen/downloads/list_gpl.asp) kolme aasta jooksul alates toote kättesaamise kuupäevast.

Samuti võite lähtekoodi paluda TRENDneti'lt, 20675 Manhattan Place, Torrance, CA 90501, USA. Tel: +1-310-961-5500, Fax: +1-310-961-5511.

Limited Warranty

TRENDnet warrants its products against defects in material and workmanship, under normal use and service. Specific warranty periods are listed on each of the respective product pages on the TRENDnet website.

Garantie Limitée

TRENDnet garantit ses produits contre les problèmes de matériel ou de fabrication, dans des conditions normales d'utilisation et de service. Les périodes de garanties précises sont mentionnées sur chacun des pages produits du site web de TRENDnet.

Eingeschränkte Garantie

TRENDnet gewährt eine Garantie für seine Produkte im Falle von Material- und Bearbeitungsdefekten, bei normaler Verwendung und Wartung. Spezielle Garantiezeiträume werden auf jeder Produktseite auf der Website von TRENDnet genannt.

Garantía limitada

TRENDnet garantiza que sus productos carecen de defectos en el material y la fabricación, en condiciones de uso y funcionamiento normales. Los periodos específicos de garantía figuran en cada una de las páginas de producto del sitio web de TRENDnet.

Ограниченная гарантия

Компания TRENDnet предоставляет гарантию на свои изделия от дефектов материалов и сборки при нормальном использовании и обслуживании. Конкретные гарантийные сроки указаны на странице каждого продукта на сайте компании TRENDnet.

Garantia Limitada

A TRENDnet garante seus produtos contra defeitos de material e mão de obra sob condições normais de uso e serviço. Os períodos de garantia específicos estão listados em cada uma das páginas dos respectivos produtos no site da TRENDnet.

Piiratud garantii

TRENDneti garantii hõlmab materjali- ja koostamisdefekte, mis ilmnevad toote tavapärasel kasutamisel. Garantiaaja täpne pikkus konkreitse toote puhul on leitav TRENDneti kodulehelt vastava toote infolehelt.

Garanzia limitata

TRENDnet garantisce i propri prodotti da difetti di materiali e manodopera, in condizioni di normale uso ed esercizio. I periodi di garanzia specifici sono elencati sulle rispettive pagine di prodotto sul sito TRENDnet.

Обмежена гарантія

TRENDnet надає гарантію на свою продукцію щодо відсутності дефектів матеріалів та роботи за умови її належного використання та обслуговування. Конкретні гарантійні періоди перелічені на сторінці кожного виробу на сайті компанії TRENDnet.

Certifications

This device can be expected to comply with Part 15 of the FCC Rules provided it is assembled in exact accordance with the instructions provided with this kit.

Operation is subject to the following conditions:

- (1) This device may not cause harmful interference
- (2) This device must accept any interference received including interference that may cause undesired operation.



Waste electrical and electronic products must not be disposed of with household waste. Please recycle where facilities exist. Check with your Local Authority or Retailer for recycling advice.

Applies to PoE Products Only: This product is to be connected only to PoE networks without routing to the outside plant.

Note

The Manufacturer is not responsible for any radio or TV interference caused by unauthorized modifications to this equipment. Such modifications could void the user's authority to operate the equipment.

Advertencia

En todos nuestros equipos se mencionan claramente las características del adaptador de alimentación necesario para su funcionamiento. El uso de un adaptador distinto al mencionado puede producir daños físicos y/o daños al equipo conectado. El adaptador de alimentación debe operar con voltaje y frecuencia de la energía eléctrica domiciliar existente en el país o zona de instalación.

Technical Support

If you have any questions regarding the product installation, please contact our Technical Support.

Toll free US/Canada: 1-866-845-3673

Regional phone numbers available
at www.trendnet.com/support

Product Warranty Registration

Please take a moment to register your product online. Go to TRENDnet's website at:
<http://www.trendnet.com/register>

Russian Technical Support: 7 (495) 276-22-90
Телефон технической поддержки: 7 (495) 276-22-90

TRENDnet
20675 Manhattan Place, Torrance, CA 90501, USA
Copyright © 2015. All Rights Reserved. TRENDnet.



Product Warranty Registration

Please take a moment to register your product online.
Go to TRENDnet's website at <http://www.trendnet.com/register>