



26-Port Industrial Gigabit L2 Managed PoE+ Rackmount Switch

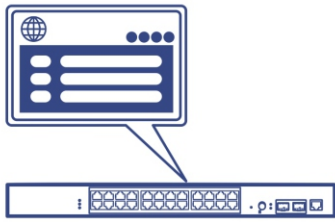
TI-RP262i ((v1.0R))

- 24 x Gigabit PoE+ ports
- 2 x SFP slots
- Supports 100/1000Base-FX fiber SFP modules
- 685W PoE power budget
- PoE alive check restarts unresponsive PoE powered devices
- 52Gbps switching capacity
- Hardened IP30 rated metal housing
- Operating temperature range of -40° – 70° C (-40° – 158° F)
- Supports LACP, STP/RSTP, VLAN, and IGMP Snooping
- IEEE 802.1p QoS with queue scheduling support
- CLI (Console / Telnet / SSH), Web (HTTP / HTTPS), SNMP v1 / 2c /management
- IGMP Snooping / MVR support
- 802.1p / DSCP / Queue Scheduling (SPQ / WRR) QoS support
- Bandwidth control per port
- Supports Ethernet Ring Protection Switching (ERPS)
- 19" rack mountable metal housing with included mounting kit
- Multiple inputs provide power with overload current protection
- Power supply sold separately (model: TI-RSP100048)

3

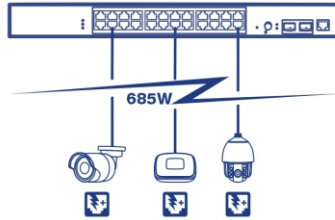
TRENDnet's Industrial Gigabit L2 Managed PoE+ Rackmount Switch Series offers advanced layer 2 managed features with enhanced traffic controls to meet the evolving demands of today's SMB networks. Each industrial layer 2 rackmount switch is equipped with an IP30 rated metal enclosure, designed to withstand a high degree of vibration and shock, while operating within a wide temperature range of -40° – 70° C (-40° – 158° F) for industrial environments. Our industrial layer 2 rackmount switch models feature copper gigabit ports for high-speed device connections, as well as SFP slots that support 100/1000Base-FX SFP modules for long distance fiber networking applications. These industrial layer 2 rackmount switches feature a fanless design that eliminates operating noise and lowers energy consumption.

These Industrial Gigabit L2 Managed PoE+ Rackmount Switch Series provides an intuitive web-based management interface. Each TRENDnet industrial layer 2 rackmount switch supports advanced traffic management controls, troubleshooting, and SNMP monitoring. Advanced managed switch features include LACP to group ports together and increase bandwidth between switches, VLANs for segmenting and isolating virtual LAN groups, QoS to prioritize traffic, port bandwidth controls, SNMP monitoring, and more, making each TRENDnet industrial layer 2 rackmount switch a powerful solution for SMB networks.



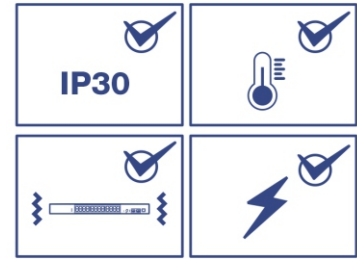
L2 Management

Provides an easy to use web management interface for traffic management controls such as VLAN, QoS, access controls, link aggregation, troubleshooting, SNMP monitoring, and per port MAC restriction.



PoE Power

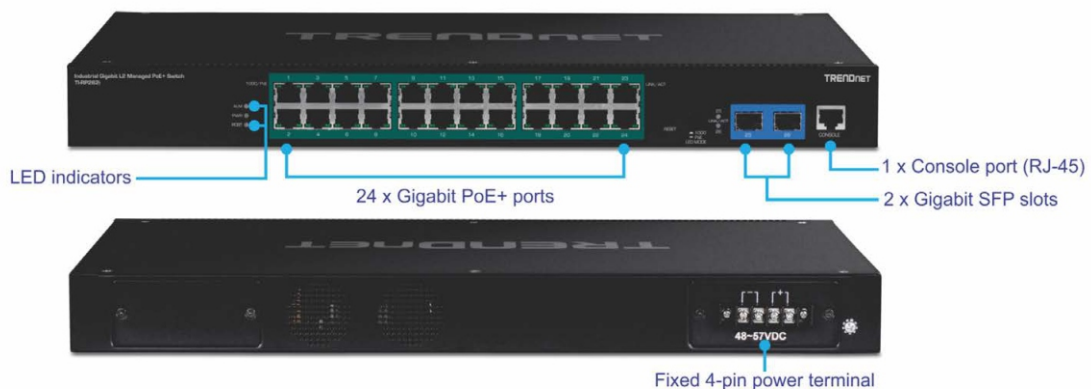
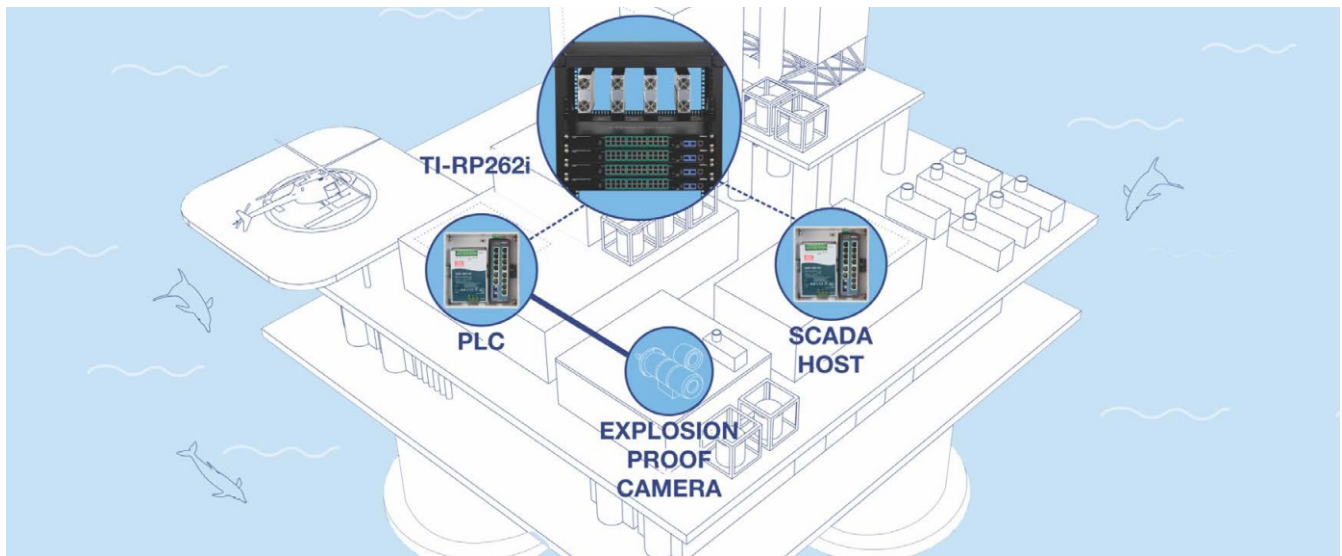
A 685W PoE power budget supplies up to 24 Power over Ethernet devices, and includes advanced PoE port controls, such as enabling / disabling PoE, power priority, PD alive check, and power scheduling.



Industrial Design

Equipped with an IP30 rated metal enclosure, designed to withstand a high degree of vibration and shock, while operating within a wide temperature range of -40° – 70° C (-40° – 158° F) for industrial environments.

NETWORKING SOLUTION



FEATURES



Network Ports

24 x Gigabit PoE+ ports and 2 x SFP slots allow for a 52Gbps switching capacity, and 1 x console port (RJ-45 to RS-232) for out-of-band management



PoE Power

Industrial layer 2 PoE+ rackmount switch supplies up to 30W of PoE+ power per port with a 685W total PoE power budget



Full PoE Control Per Port

Available PoE port controls on the industrial layer 2 PoE+ rackmount switch include enabling / disabling PoE, power priority, PD alive check, and power scheduling



Traffic Management

Managed features include 802.1Q, IGMP v1 / 2 / 3, IGMP Snooping, per port bandwidth control / 802.1p / DSCP / Queue Scheduling (SPQ / WRR), STP / RSTP, static and dynamic link aggregation, and ERPS for flexible network integration



Layer 2 Management

Offers IPv4 / IPv6 static or DHCPv4 / v6 assignment, DHCP server / relay / option 82, and DHCP server snooping / screening to filter out unauthorized DHCP servers



Access Control

Managed access control features include ACLs, IP-MAC-Port binding, ARP inspection, 802.1X RADIUS, MAC address learning, DHCP snooping, and IP Source Guard provides layered network access controls



System Monitoring

Monitoring features include SNMP v1 / v2c / 3, MIB support, SNMP trap, RMON Groups (1, 2, 3, 9), SMTP alert, syslog, port mirroring, and ModBus / TCP



19" Rackmount

Sturdy rack mountable metal housing with mounting kit included



Fanless Design

Industrial layer 2 rackmount switch with a fanless design to eliminate operating noise and lower energy consumption



Switching Capacity

52Gbps switching capacity



Power

Multiple power inputs are featured on the industrial layer 2 rackmount switch (power supply sold separately: TI-RSP100048)



Jumbo Frame

Sends larger packets, or Jumbo Frames (up to 10KB), for increased performance



Wide Temperature Range

A wide operating temperature range of -40° – 70° C (-40° – 158° F) allows the industrial layer 2 rackmount switch to be installed in extreme hot or cold environments



Shock and Vibration Resistant

Rated for shock (EN 60068-2-27), freefall (EN 60068-2-32), and vibration (EN 60068-2-6)



Grounding Point

Grounding point on the industrial layer 2 rackmount switch protects equipment from external electrical surges

SPECIFICATIONS

Standards

- IEEE 802.1d
- IEEE 802.1p
- IEEE 802.1Q
- IEEE 802.1w
- IEEE 802.1X
- IEEE 802.1ab
- IEEE 802.1ax
- IEEE 802.3u
- IEEE 802.3x
- IEEE 802.3ab
- IEEE 802.3az
- IEEE 802.3af
- IEEE 802.3at

Device Interface

- 24 x Gigabit PoE+ ports
- 2 x Gigabit SFP slots
- 1 x Console port (RJ-45)
- Fixed 4-pin power terminal
- LED indicators
- LED Display mode button (toggles LED indicators to display link/activity or PoE only port status)

Data Transfer Rate

- Ethernet: 10Mbps (half duplex), 20Mbps (full duplex)
- Fast Ethernet: 100Mbps (half duplex), 200Mbps (full duplex)
- Gigabit Ethernet: 2000Mbps (full duplex)
- SFP: 2000Mbps (full duplex)

Performance

- Switch fabric: 52Gbps
- Data RAM buffer: 512KB
- MAC address table: 8K entries
- Jumbo frames: 10KB
- Forwarding mode: store and forward
- Forwarding rate: 38.7Mpps (64-byte packet size)

Management

- HTTP / HTTPS web-based GUI
- CLI: Telnet / SSHv2
- SNMP v1, v2c, v3
- SNMP trap (up to 5 receivers)
- RMON groups 1/2/3/9
- Device configuration backup & restore, upgrade firmware, reboot, and reset to default
- Multiple administrative or read-only user accounts
- Enable or disable power saving mode per port
- Static MAC entries
- Static unicast entries
- LLDP (Link layer discovery protocol)
- Netlite device map
- ONVIF device discovery
- SNTp
- SMTP alert
- Syslog
- Port statistics/utilization
- Traffic monitor
- Port mirror: one to one, many to one
- Storm control: Broadcast, multicast, destination lookup failure (Min. limit: 1pps)
- Loopback detection
- DHCP relay/option 82
- Modbus/TCP
- ERPS (Ethernet Ring Protection Switching) G8032v2

MIB

- MIB II RFC 1213
- Bridge MIB RFC 1493
- RMON (Group 1,2,3,9) RFC 2819 RFC 1757

Spanning Tree

- IEEE 802.1d STP (spanning tree protocol)
- IEEE 802.1w RSTP (rapid spanning tree protocol)
- BPDU filter, guard, and root guard

Link Aggregation

- Static link aggregation and 802.1ax/802.3ad dynamic LACP (Up to 8 groups)

Quality of Service (QoS)

- 802.1p Class of service (CoS)
- DSCP (Differentiated Services Code Point)
- Bandwidth control per port
- Queue Scheduling: strict priority (SP), weighted round robin (WRR), weighted fair queuing (WFQ)

VLAN

- 802.1Q tagged VLAN
- MAC-based VLAN
- Port isolation
- Up to 256 VLAN groups, ID range 1-4094

Multicast

- IGMP snooping v1, v2, v3
- IGMP querier
- IGMP fast/immediate leave
- Up to 256 multicast groups
- Static multicast entries

Access Control

- 802.1X authentication (Local user database, RADIUS, guest VLAN assignment)
- DHCP snooping/screening
- Trusted host/IP access list for management access
- Port Security/MAC address learning restriction (Up to 100 entries per port)
- Static/dynamic ARP inspection

ACL

- Source/Destination MAC address
- Source/Destination IP address
- Source Interface
- VLAN ID
- EtherType
- TCP/UDP port 1-65535

Special Features

- Netlite device discovery and map display in GUI
- Port security: MAC address learning restriction per port
- DHCP relay/option 82 & DHCP server snooping/screening support
- Wide operating temperature range
- Surge and ESD protection

Power

- Power terminal input: 48 – 57V DC
- Compatible power supply: TI-RSP100048 (1000W) sold separately
- Max. Consumption: 20W (no PoE load); 705W (full PoE load)

PoE

- PoE budget: 685W @ 48V DC input
- 802.3at: Up to 30W per port
- PoE Mode A: Pins 1, 2, 3, and 6 for power
- PoE auto classification
- PoE port priority/power scheduling/PD alive check
- Over current/short circuit protection

Terminal Block

- Power input, 4 pin
- Wire range: 1.5 mm² to 2.5 mm²
- Solid wire (AWG): 12-18
- Stranded wire (AWG): 12-18
- Wire strip length: 10-11mm

Enclosure

- IP30 rated metal enclosure
- Fanless passive cooling
- Rack mountable 1U
- Grounding point
- ESD (Ethernet) Protection: 8KV DC (Air) 4KV (Contact)
- Surge (Power) Protection: 1KV DC

MTBF

- 475,352 hours @ 25° C
- 127,076 hours @ 70° C

Operating Temperature

- -40° – 70° C (-40° – 158° F)

Operating Humidity

- Max. 95% non-condensing

Dimensions

- 440 x 310 x 44mm (17.3 x 12.3 x 1.7 in.)

Weight

- 3.58kg (7.89 lbs.)

Certifications

- CE
- FCC
- Shock (IEC 60068-2-27)
- Freefall (IEC 60068-2-32)
- Vibration (IEC 60068-2-6)

Warranty

- Lifetime Warranty*

Package Contents

- TI-RP262i
- Quick Installation Guide
- Console cable (RJ-45 to RS-232)
- Rackmount Kit

TRENDnet offers a lifetime warranty for all of its metal-enclosed network switches that have been purchased in the United States/Canada on or after 1/1/2015. Cooling fan and internal power supply carry a one-year warranty.

All references to speed are for comparison purposes only. Product specifications, size, and shape are subject to change without notice, and actual product appearance may differ from that depicted herein.