



TRENDNET



Quick Installation Guide



TFM-560U

Table of Contents

Français	1
1. Avant de commencer	1
2. Procéder à l'installation	2
3. Vérification de l'installation	5
Troubleshooting	6

1. Avant de commencer



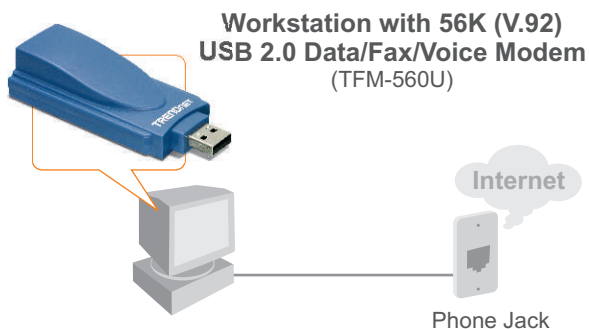
Contenu de l'emballage

- TFM-560U
- Pilote sur CD-ROM
- Guide d'installation rapide
- Câble téléphonique RJ-11

Configuration du système

- Lecteur de CD-ROM
- Microprocesseur : Intel Pentium 233 MHz ou supérieur
- Mémoire: 32 MB ou supérieur
- Espace sur le disque dur : 4 MB ou supérieur
- Port USB : 1.1 ou 2.0
- Windows 2003 Server/XP/2000/ME/98SE

Application



2. Procéder à l'installation

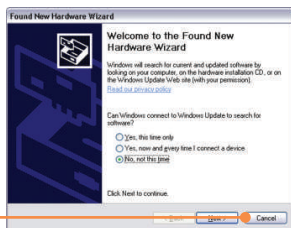
Remarque: Consultez le guide de l'utilisateur sur le CD-ROM pour les instructions d'installation sur Windows 98SE et Windows ME.

Windows 2003 Server/XP/2000

1. Enlevez le couvercle du TFM-560U USB et branchez le modem à un port USB 2.0 ou 1.1 disponible de l'ordinateur



2. Lorsque l'**Assistant nouveau matériel détecté** ou l'**Assistant ajout de nouveau matériel détecté** apparaît, cliquez sur **Supprimer**.

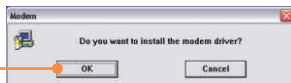


3. Insérez le **CD-ROM avec le pilote** dans votre lecteur de CD-ROM.

4. Cliquez sur **Démarrer -> Exécuter**, tapez **E:\Driver\Win2K&XP\setup.exe** et cliquez sur **OK**.

Remarque : E:\ représente la lettre assignée à votre lecteur de CD-ROM.

5. Cliquez sur **OK**.



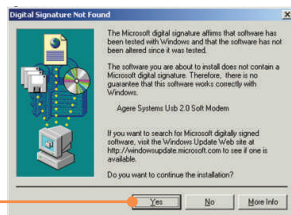
Windows 2003 Server/XP

6. Cliquez sur **Continuez malgré tout**.



Windows 2000

7. Cliquez sur **Yes (Oui)**.



8. Branchez un câble téléphonique entre le modem et la prise du téléphone.



L'installation est maintenant complète.

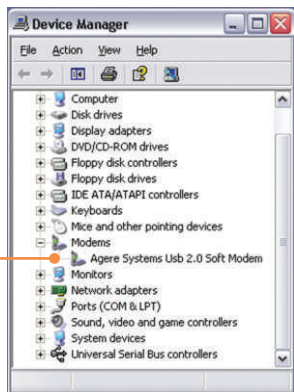
Si vous désirez des informations détaillées sur la configuration et les paramètres avancés du TFM-560U, veuillez consulter la rubrique Dépannage, le guide de l'utilisateur sur CD-ROM ou le site Internet de Trendnet sur <http://www.trendnet.com>.

3. Vérification de l'installation

Windows 2003 Server/XP/2000

1. Faites un clic droit sur **My Computer** (Poste de travail) et cliquez sur **Property** (Propriétés). Sous l'onglet **Matériel**, cliquez sur **Device Manager** (Gestionnaire de périphériques).

2. Développez la liste "Modems" pour vérifier que le **Agere Systems USB 2.0 Soft Modem** a été installé et qu'aucun point d'interrogation ou d'exclamation n'apparaisse.



Q1: I inserted the modem into my computer's USB port and my computer does not detect the modem? What should I do?

A1: Make sure the computer meets the minimum system requirements as shown at the beginning of this quick installation guide. Also verify that the modem is properly inserted in the computer's USB port. You may also try inserting the modem into a different USB port.

Q2: After successful installation of the TFM-560U, I tried to connect to the Internet but I do not get a dial tone. What should I do?

A2.1: Unplug the telephone cable from the computer, and check for a dial tone by connecting the telephone cable directly from the wall outlet to a telephone. If there is no dial tone, then the problem is in your telephone cable or telephone system. Call your telephone service provider for assistance. If there is a dial tone, reconnect cables to the modem and verify that the telephone cord is securely connected to the modem and phone jack.

A2.2: If a PBX or other phone system is installed, check modem performance with a direct line from your telephone company. Some PBXs may cause the telephone line condition change and effect modem performance.

Q3: How do I install the drivers on Windows 98SE or ME?

A3: Please refer to the User's Guide included on the Driver CD-ROM.

If you still encounter problems or have any questions regarding the TFM-560U, please refer to the User's Guide included on the Driver CD-ROM or contact Trendnet's Technical Support Department.

Certifications

This equipment has been tested and found to comply with FCC and CE Rules. Operation is subject to the following two conditions:

- (1) This device may not cause harmful interference.
- (2) This device must accept any interference received. Including interference that may cause undesired operation.



Waste electrical and electronic products must not be disposed of with household waste. Please recycle where facilities exist. Check with you Local Authority or Retailer for recycling advice.



NOTE: THE MANUFACTURER IS NOT RESPONSIBLE FOR ANY RADIO OR TV INTERFERENCE CAUSED BY UNAUTHORIZED MODIFICATIONS TO THIS EQUIPMENT. SUCH MODIFICATIONS COULD VOID THE USER'S AUTHORITY TO OPERATE THE EQUIPMENT.



TRENDnet

TRENDnet Technical Support

US • Canada

Toll Free Telephone: 1(866) 845-3673

24/7 Tech Support



Europe (Germany • France • Italy • Spain • Switzerland • UK)

Toll Free Telephone: +00800 60 76 76 67

English/Espanol - 24/7

Francais/Deutsch - 11am-8pm, Monday - Friday MET

Worldwide

Telephone: +(31) (0) 20 504 05 35

English/Espanol - 24/7

Francais/Deutsch - 11am-8pm, Monday - Friday MET

Product Warranty Registration

Please take a moment to register your product online.

Go to TRENDnet's website at <http://www.trendnet.com>

TRENDnet

3135 Kashiwa Street

Torrance, CA 90505

USA