



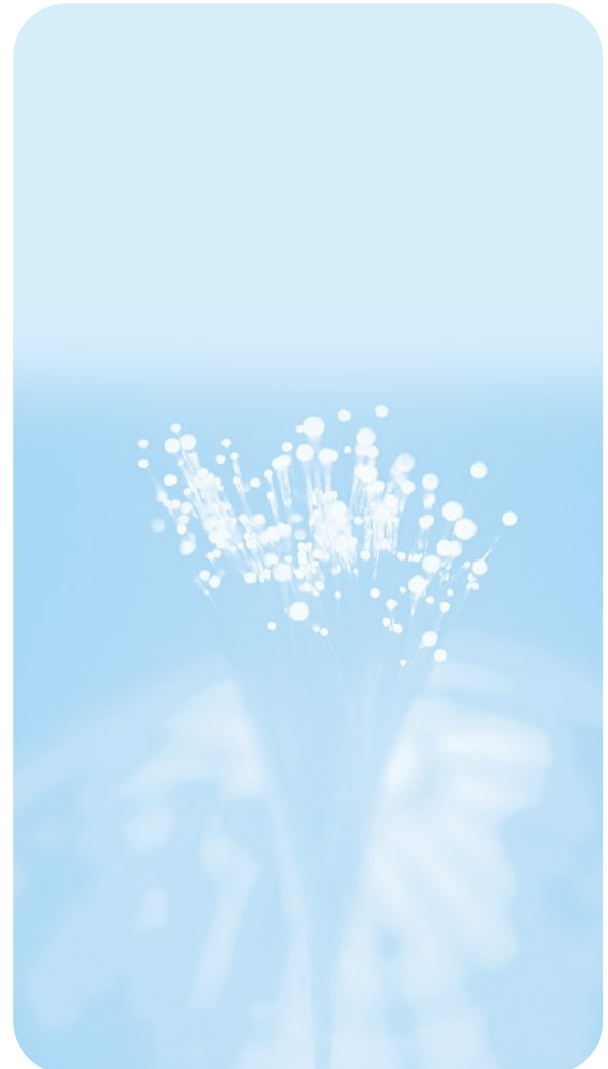
## TFC-110 SERIES Fiber Media Converter

TRENDnet's TFC-110 series Fiber Media Converter transforms 10/100Base-TX UTP/STP media to 100Base-FX media and vice versa. The 10/100Base-TX port auto-sense 10 or 100Mbps connection speed, auto-negotiates half-/full-duplex mode, and auto-selects MDI-X / MDI-II media type. The fiber connection can be multi-mode SC, MT-RJ, or single-mode SC Connector and it has a slide-switch for selecting half- or full-duplex mode. This converter will give your Switch/Hub the ability to interface with fiber connection over a distance up to 100km. With the optional 16-slot EIA-19" rack-mount chassis; the TFC series converters are the perfect solutions for various fiber media conversions for your network.



### FEATURES

- Compliant with IEEE 802.3 10Base-T and IEEE 802.3u 100Base-TX / 100Base-FX standards
- One 10/100Base-TX auto-negotiation RJ-45 port
- Auto-negotiation 10/100Mbps connection speed and half- / Full-duplex mode on TX port
- Auto MDI-X / MDI-II for 10/100Base-TX port
- One 100Mbps fiber port with Multi-mode SC, MT-RJ, or Single-mode SC connector
- Half- / Full-Duplex mode selector on Fiber port
- Status LED indicators for Power, Link/Activity, Full-Duplex, and Speed
- Wall-Mountable
- Optional 19" system chassis with redundant power supply, holds up to 16 TFC series Media Converters
- 5 Year Warranty



# TFC-110 SERIES Fiber Media Converter

## SPECIFICATIONS

### Standards:

- IEEE802.3 10Base-T, IEEE 802.3u 100Base-TX and 100Base-FX

### Supported Frame Size:

- Standard Ethernet up to 1522-Byte

### Network Media:

- 100Base-TX: CAT 5, EIA/TIA-568 100-ohm UTP/STP, up to 100 meters.
- 100Base-FX: 50/125 $\mu$ m or 62.5/125 $\mu$ m multi-mode fiber optic cable, up to 2 km. 9/125 $\mu$ m or 10/125 $\mu$ m single-mode fiber optic cable, up to 100km

### Protocol:

- CSMA/CD

### Ports:

- 1 x 10/100Base-TX and 1 x 100Base-FX

### Data Transfer Rate:

- 100Mbps (Half-Duplex), 200Mbps (Full-Duplex)

### Diagnostic LEDs:

- Power, Link/Activity, Full-Duplex, and Speed

### Power Adapter:

- 7.5VDC, 1.5A (7.2 watts max.)

### Dimensions:

- 120 x 88 x 25 mm (W x D x H)

### Weight:

- Approx. 354 g. (12.5 Oz.)

### Temperature:

- Operating: 0° ~ 40° C (32° ~ 104° F),
- Storage: -25° ~ 70° C (-13° ~ 158° F)

### Humidity: Operating:

- 10% ~ 90%, Storage: 5% ~ 90% (non-condensing)

### Certifications:

- FCC, CE, VCCI



## PRODUCT INFORMATION

- **TFC-1600:** 16-slot EIA-19" (2 Unit-Height) Chassis for TFC series Media Converters
- **TFC-110MSC:** 10/100Base-TX to 100Base-FX Multi-Mode Fiber with SC Connector
- **TFC-110MM:** 10/100Base-TX to 100Base-FX Multi-Mode Fiber with MT-RJ Connector
- **TFC-110MST:** 10/100Base-TX to 100Base-FX Single-Mode 15 km Fiber with SC Connector
- **TFC-110S15:** 10/100Base-TX to 100Base-FX Single-Mode 15 km Fiber with SC Connector
- **TFC-110S30:** 10/100Base-TX to 100Base-FX Single-Mode 30 km Fiber with SC Connector
- **TFC-110S60:** 10/100Base-TX to 100Base-FX Single-Mode 60 km Fiber with SC Connector
- **TFC-110S100:** 10/100Base-TX to 100Base-FX Single-Mode 100 km Fiber with SC Connector

## ORDERING INFORMATION



**TRENDware International, Inc.**  
3135 Kashiwa Street  
Torrance, CA. 90505. USA  
Tel: 310-891-1100  
Fax: 310-891-1111  
Web: [www.TRENDNET.com](http://www.TRENDNET.com)  
Email: [sales@trendware.com](mailto:sales@trendware.com)

**To Order Please Call:**  
**1-888-326-6061**