



## **TRENDnet 10GBASE-T to SFP+ Fiber Media Converter, TFC-10GSFP, 1 x 10G RJ-45 Port, 1 x 10Gbps SFP+ Slot, SFP+ to 10G RJ-45, Power Adapter Included**

TFC-10GSFP (v1.0R)

- **DEVICE INTERFACE:** 1 x 10G/5G/2.5G/1G Ethernet Port; 1 x 10G/5G/1G SFP+ Slot; LED Indicators
- **MULTI-GIG SLOT:** 1 x 10G RJ-45 Port that supports 10G, 5G, 2.5G and 1G speeds.
- **MULTI-GIG SFP:** 1 x 10Gbps SFP+ Slot that supports 10G, 5G, and 1G speeds.
- **POWER ADAPTER:** Included with this 10G SFP fiber media converter is a power adapter that allows for standalone use
- **COMPACT DESIGN:** The small and compact design of the SFP+ to 10G RJ-45 adapter allows for greater installation flexibility.
- **FIBER WAVELENGTH:** The SFP slot accommodates multimode or single-mode transmissions
- **COMPLIANCE:** The SFP converter is NDAA/ TAA Compliant (U.S. and Canada Only)
- NDAA / TAA compliant (U.S. and Canada only)

TRENDnet's compact 10GBASE-T to SFP Fiber Media Converter, model TEG-10GSFP, converts a 10GBASE-T (Copper 10Gbps) ethernet connection to 10G BASE-SX/LX (Fiber) SFP media connection , and vice versa. The 10GBASE-T RJ-45 port on the 10G SFP+ transceiver supports a full-duplex 10G connection at wire speed. The SFP slot supports both multimode (SX) or single-mode (LX) SFP modules.



## Multi-Gig Slot

The SFP and RJ-45 ports support 10G, 5G, and 1G speeds.



## Power Adapter

A power adapter is included with the 10G SFP+ transceiver for standalone use.



## Compact

Compact and lightweight metal housing design provides greater installation flexibility.

## FEATURES



### Multi-Gig Ethernet

1 x 10G/5G/2.5G/1G Ethernet port



### Multi-Gig SFP

1 x 10G/5G/1G SFP+ slot



### Fanless

Fanless design on the 10G SFP+ media converter lowers energy consumption and eliminates operating noise



### Compact Design

Small, compact, and lightweight metal housing of the 10GbE SFP+ transceiver provides greater installation flexibility



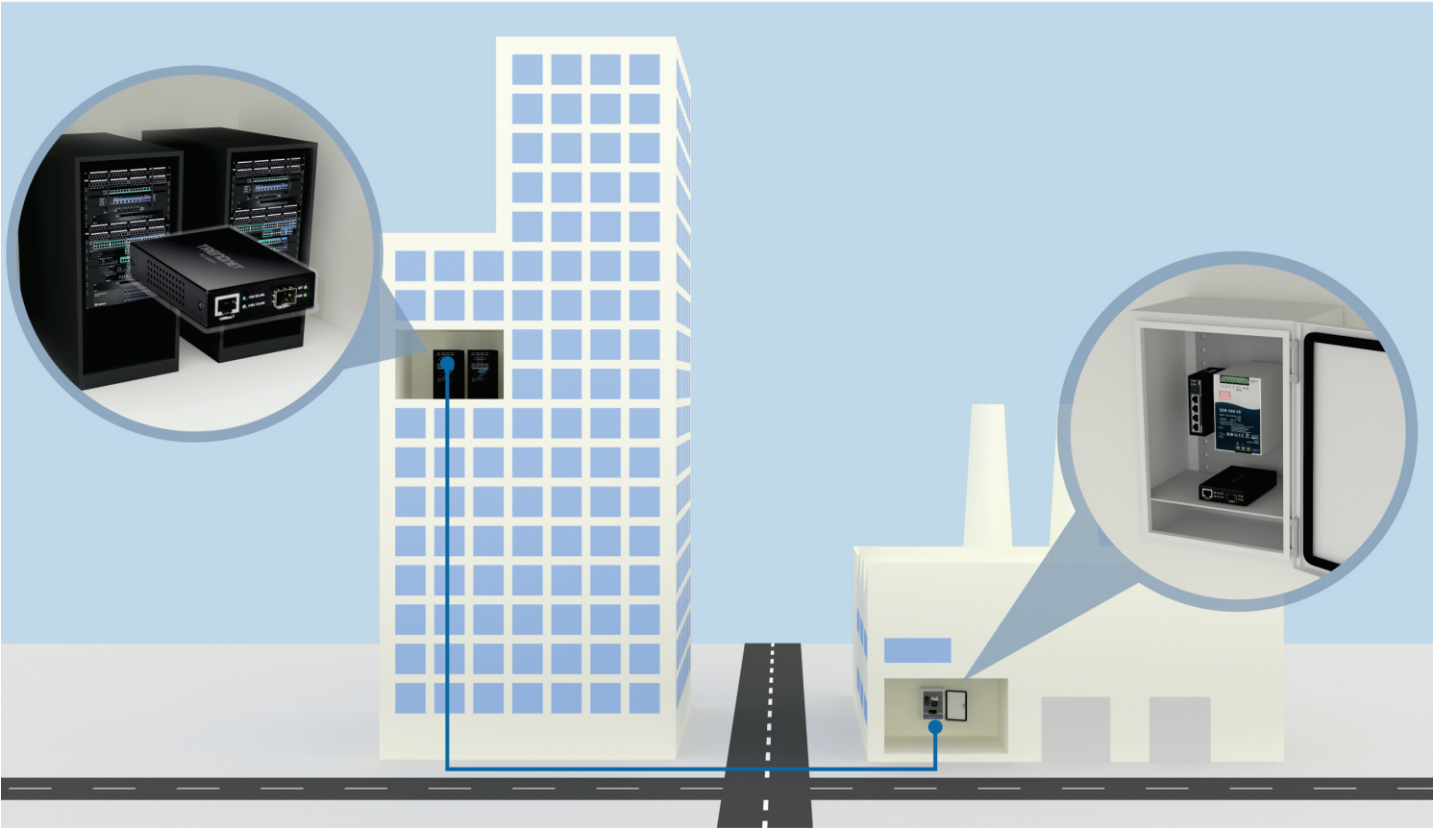
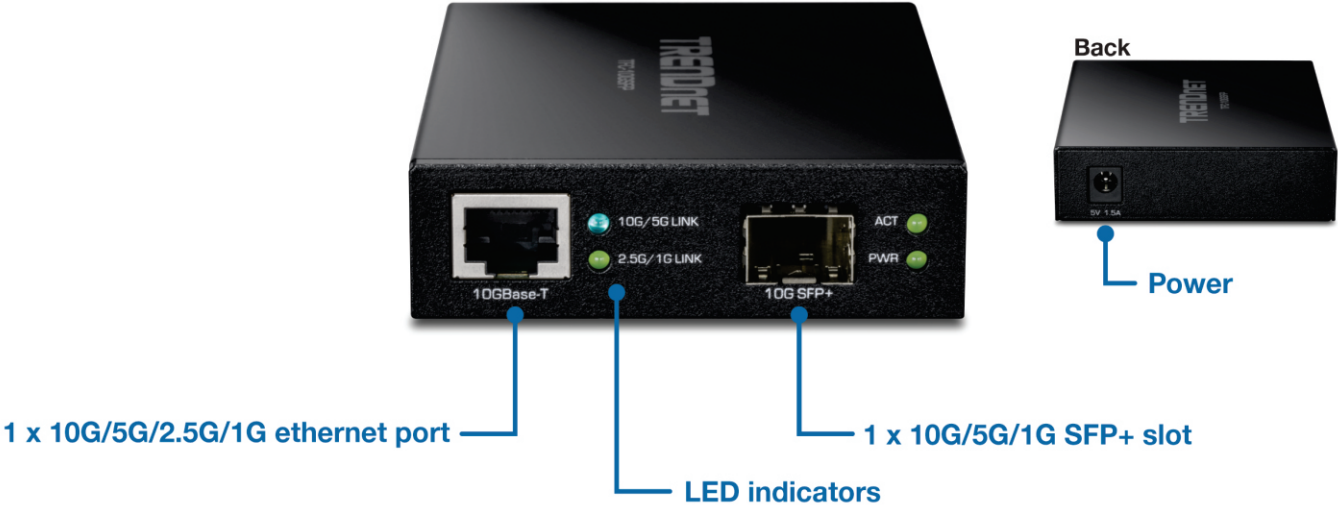
### LED Indicators

LED indicators convey port status



### Fiber Wavelength

The 10G SFP+ transceiver is compatible with multi-mode and single mode transmissions



## SPECIFICATIONS

### Standards

- IEEE 802.3
- IEEE 802.3u
- IEEE 802.3ab
- IEEE 802.3an
- IEEE 802.3bz
- IEEE 802.3z

### Device Interface

- 1 x 10G/1G ethernet port\*
- 1 x 10G/1G SFP+ slot
- LED indicators

### Data Transfer Rate

- Gigabit: 2000Mbps (full duplex)
- 10G: 20Gbps (full duplex)

### Special Features

- Supports Link Fault Pass-Through (LFPT)
- SFP slot supports Multimode and Single mode Modules

### Power

- Input: 110 – 240 V AC, 50/60 Hz 0.5A
- Output: 5V DC, 1.5A
- Max. consumption: 4W

### Operating Temperature

- 0° C – 50° C (32° F – 122° F)

### Operating Humidity

- Max. 90% non-condensing

### Dimensions

- 105 x 75 x 22 mm (4.13 x 2.95 x 0.86 in.)

### Weight

- 188 g (6.63 oz.)

### Certifications

- CE
- FCC

### Warranty

- 3 year

### Package Contents

- TFC-10GSFP
- Quick Installation Guide
- Power Adapter (5V DC, 1.5A)

\* Ethernet and SFP speeds must match to achieve a link.

All references to speed are for comparison purposes only. Product specifications, size, and shape are subject to change without notice, and actual product appearance may differ from that depicted herein.